

National Oceanic and Atmospheric Administration

ERRATA NOTICE

One or more conditions of the original document may affect the quality of the image, such as:

Discolored pages
Faded or light ink
Binding intrudes into the text

This has been a co-operative project between the NOAA Central Library and the Climate Database Modernization Program, National Climate Data Center (NCDC). To view the original document, please contact the NOAA Central Library in Silver Spring, MD at (301) 713-2607 x124 or www.reference@nodc.noaa.gov.

LASON
Imaging Contractor
12200 Kiln Court
Beltsville, MD 20704-1387
March 21, 2005

Date of publication: 4 October 1901

(For dates of publication, see Evermann, B.W.
(1902) Summary of the scientific results of the
Fish Commission expedition to Porto Rico.
Bulletin of the United States Fish Commission
20 [for 1900](1): XI–XV.)

SCIENTIFIC INQUIRY.

U. S. Bureau of Commercial Fisheries:
Fishing Bulletin.

BULLETIN

Randall
SH
11
A25
V. 20
pt. 2

OF THE

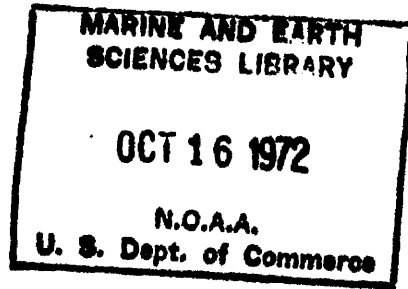
UNITED STATES FISH COMMISSION.

VOL. XX,

FOR

1900.

SECOND PART.



GEORGE M. BOWERS, Commissioner.

WASHINGTON:
GOVERNMENT PRINTING OFFICE.
1902.

INVESTIGATIONS

OF THE

AQUATIC RESOURCES AND FISHERIES OF PORTO RICO

BY

THE UNITED STATES FISH COMMISSION STEAMER FISH HAWK

IN

1 8 9 9 .

TABLE OF CONTENTS.

FIRST PART.

	Page.
Preface, by the Commissioner	IX-X
Summary of the Scientific Results of the Fish Commission Expedition to Porto Rico, by Barton Warren Evermann	XI-XV
General Report on the Investigations, by Barton Warren Evermann	1-26
The Fisheries and Fish Trade of Porto Rico, by William A. Wilcox	27-48
The Fishes of Porto Rico, by Barton Warren Evermann and Millard Caleb Marsh	49-350
The Mollusca of Porto Rico, by William Healey Dall and Charles Torrey Simpson	351-524

SECOND PART.

The Brachyura and Macrura of Porto Rico, by Mary J. Rathbun	1-127
The Anomuran Collections, by James E. Benedict	129-148
The Stomatopoda of Porto Rico, by Robert Payne Bigelow	149-160
The Porto Rican Isopoda, by H. F. Moore	161-176
The Cirripedia collected near Porto Rico, by Maurice A. Bigelow	177-180
The Polychaetous Annelids of Porto Rico, by A. L. Treadwell	181-210
Description of two new Leeches from Porto Rico, by J. Percy Moore	211-222
The Nemerteans of Porto Rico, by Wesley R. Coe	223-229
The Echinoderms of Porto Rico, by Hubert Lyman Clark	231-263
The Alcyonaria of Porto Rico, by Charles W. Hargitt and Charles G. Rogers	265-287
The Stony Corals of the Porto Rican Waters, by T. Wayland Vaughan	289-320
The Actinians of Porto Rico, by J. E. Duerden	321-374
The Sponges collected in Porto Rico in 1899, by H. V. Wilson	375-411
The Foraminifera of Porto Rico, by James M. Flint	413-416

LIST OF ILLUSTRATIONS IN SECOND PART.

	Page.		Page.
Brachyura and Macrura of Porto Rico:		Alcyonaria of Porto Rico—Continued.	
Plate 1. <i>Ucides cordatus</i> , female, natural size.		Plate III. <i>Eunica rousseauil</i> , <i>Gorgonia acerosa</i> ,	
<i>Goniopsis cruentata</i> , male, natural size	3	<i>G. flabellum</i> , <i>G. bipinnata</i>	298
2. <i>Parapeneus americanus</i> , female, natural size. <i>Calappa flammea</i> , male, natural size	84	IV. <i>Plexaura crassa</i> , <i>P. flexuosa</i>	288
Anomuran collections:		Stony corals of the Porto Rican waters:	
Plate 3. <i>Petrolisthes marginata</i> , <i>P. tridentatus</i> ,		Plate I. <i>Paracyathus</i> , <i>Deltocyathus</i> , <i>Axhelia</i> ,	
<i>P. amoenus</i> , <i>P. quadratus</i> , <i>Pisosoma glabra</i> ,		<i>Oculina</i> , <i>Astrangia</i> , "Diaseris"	320
<i>P. angustifrons</i> , <i>P. serrata</i> , <i>Megalobrachium poeyi</i> , <i>Pachycheles rugimanus</i> ,		II. <i>Cyathoceras</i> , <i>Astrangia</i> , <i>Cladocora</i> ,	
<i>Porcellana sayana</i> , <i>P. pillosa</i> , <i>Euceramus prelongus</i>	148	<i>Porites</i>	320
4. <i>Paguristes tenuirostris</i> , <i>P. sayi</i> , <i>P. moorei</i> ,		III. <i>Meandrina meandrites</i>	320
<i>P. puncticeps</i> , <i>P. depressus</i> , <i>P. spinipes</i> ,		IV. <i>Meandrina meandrites</i> , <i>Manicina areolata</i>	320
<i>P. rectifrons</i> , <i>P. lymani</i> , <i>P. triangulatus</i>	148	V. <i>Meandrina danu</i>	320
5. <i>Paguristes grayi</i> , <i>P. puncticeps</i> , <i>Calchnus sulcatus</i> ,		VI. <i>Orbicella acropora</i>	320
<i>Munida evermanni</i>	148	VII. <i>Orbicella acropora</i>	320
6. <i>Chibanarius antillensis</i> , <i>C. tricolor</i>	148	VIII. <i>Favia fragum</i>	320
Report on Porto Rican Isopoda:		IX. <i>Platygyra viridis</i>	320
7. <i>Apsuedes espinosus</i> , <i>Leptocheilia incerta</i> .	176	X. <i>Platygyra viridis</i>	320
8. <i>Cirolana mayana</i> , <i>C. parva</i> , <i>C. obtruncata</i> ,		XI. <i>Platygyra viridis</i>	320
<i>Branchuropus littoralis</i>	176	XII. <i>Platygyra viridis</i>	320
9. <i>Branchuropus littoralis</i> , <i>Corallana tricornis</i> ,		XIII. <i>Platygyra viridis</i>	320
<i>Alcirona hirsuta</i> , <i>Nalcora rapax</i>	176	XIV. <i>Siderastrea siderea</i>	320
10. <i>Aega ecarinata</i> , <i>Rocinela signata</i> , <i>Anilocra laticauda</i> ,		XV. <i>Siderastrea radians</i>	320
<i>Cilicea cordata</i> , <i>Dynamene perforata</i>	176	XVI. <i>Siderastrea siderea</i> , <i>S. radians</i>	320
11. <i>Cleantis planicauda</i> , <i>Ligia gracilis</i> , <i>Philoscia culebrae</i>	176	XVII. <i>Agaricia elephantotus</i> , <i>Axhelia asperula</i>	320
Descriptions of two new leeches from Porto Rico:		XVIII. <i>Agaricia</i> sp	320
Plate 12. <i>Hirudinaria blanchardi</i>	222	XIX. <i>Agaricia</i> sp	320
13. <i>Diplobdella antillarum</i>	222	XX. <i>Agaricia cailleti</i>	320
Echinoderms of Porto Rico:		XXI. <i>Isopora muricata</i>	320
Plate 14. <i>Ophiactis longibrachia</i> , <i>Amphfura bihamula</i>		XXII. <i>Isopora muricata</i>	320
<i>Ophionereis olivacea</i> , <i>Ophiocolex serratus</i>	264	XXIII. <i>Isopora muricata</i> forma prolifera	320
15. <i>Ophiactea glabra</i> , <i>Ophiacantha ophiactoides</i> ,		XXIV. <i>Isopora muricata</i> forma prolifera	320
<i>Ophioplinthaca spinissima</i>	264	XXV. <i>Isopora muricata</i> forma prolifera	320
16. <i>Echinocucumis asperima</i>	264	XXVI. <i>Isopora muricata</i> forma palmata	320
17. <i>Holothuria densipedes</i>	264	XXVII. <i>Isopora muricata</i> forma palmata	320
Alcyonaria of Porto Rico:		XXVIII. <i>Porites porites</i>	320
Plate I. <i>Chrysogorgia desbonni</i> , <i>Acanthogorgia aspera</i>	288	XXIX. <i>Porites porites</i> forma clavaria	320
II. <i>Eunica crassa</i> , <i>E. lugubris</i>	288	XXX. <i>Porites porites</i> forma furcata	320
		XXXI. <i>Porites porites</i> forma furcata, <i>Porites porites</i> forma clavaria	320
		XXXII. <i>Porites astreoides</i>	320
		XXXIII. <i>Porites astreoides</i>	320
		XXXIV. <i>Porites astreoides</i>	320
		XXXV. <i>Millepora alaicornis</i>	320
		XXXVI. <i>Millepora alaicornis</i>	320
		XXXVII. <i>Millepora alaicornis</i>	320
		XXXVIII. <i>Millepora alaicornis</i>	320

Actinians of Porto Rico:	Page.	Actinians of Porto Rico—Continued.	Page.
Plate A. (1) Diagrammatic representation of a stage in the development of a Hexactinian polyp. (2) Diagrammatic representation of mesenteries in a brachygenic Zoanthid. (3) Diagrammatic arrangement of mesenteries in Cerianthus. (4) Diagrammatic arrangement of mesenteries in a polyp of the coral Porites	324	Plate III. Bunodosoma spherulata, Aiptasia annulata, Calliactis tricolor, Phymanthus crucifer	374
I. Stoichactis helianthus	374	IV. Zoanthus pulchellus, Z. sociatus	374
II. Zoanthus pulchellus, Z. sociatus, Isaurus duchassaingii, Protopalpythoa variabilis, Palythoa caribæa, Asteractis expansa, Bunodosoma granulifera ..	374	V. Zoanthus sociatus	374
		VI. Isaurus duchassaingii	374
		VII. Isaurus duchassaingii, Protopalpythoa variabilis	374
		VIII. Palythoa caribæa, Asteractis expansa ..	374
		IX. Asteractis expansa, Bunodosoma granulifera	374
		X. Bunodosoma granulifera, B. spherulata ..	374
		XI. Bunodosoma spherulata, Aiptasia annulata	374
		XII. Aiptasia annulata, Calliactis tricolor ..	374

TEXT CUTS.

Chasmocarcinus cylindricus	10	Nereis arroyensis	193
Specocarcinus carolinensis	11	Amphinome microcarunculata	195
Pinnixa minuta, male	21	Eunice auriculata	197
Dissodactylus encopei, male	22	Eunice culebra	197
Hexapanopeus quinquedentatus, female	31	Lumbriconereis parva-pedata	198
Pilumnus nudimanus, female	40	Lumbriconereis floridana	198
Pilumnus marshi, male	41	Lumbriconereis maculata	199
Thoe aspera, male	64	Lumbriconereis bilabiata	199
Teleophrys ornatus, female	65	Lysidice sulcata	200
Leiolambrus nitidus, male	80	Glycera abranchiata	200
Heterocrypta lapidea, female	83	Goniada oculata	201
Clythrocerus perpuillus, female	90	Ariclia cirrata	202
Callianassa marginata	92	Ariclidea alata	202
Callianassa minima	93	Anthostoma latacapitata	203
Axius defensus, female	95	Cirratulus nigromaculata	204
Axius inæqualis	97	Cirratulus elongatus	204
Homoriscus portoricensis, female	99	Phyllochetopterus claperedii	204
Alpheus armatus, female	108	Thelepus crassibranchiatus	206
Joussseaumea trigona, female	111	Dasybranchus rectus	207
Automate evermanni	112	Stylaroides glabra	208
Hippolysmata moorei	115	Dasychone ponce	209
Pandalus longicauda	117	Eupomatus parvus	210
Pontonia grayi	122	Hermella varians	210
Coralliocaris atlantica	122	Telesto riisei	218
Pagurus marshi	140	Spongodes portoricensis	279
Gonodactylus ørstedii	152, 153	Solanderia nodulifera	280
Pseudosquilla cillata	153, 155	Primnoa pourtalesii	281
Lysiosquilla plumata	157	Paramuricea hirta	282
Lysiosquilla malaguensis	158, 159	Muricea flexuosa	283
Syllis complanata	183	Eunice laxispina	284
Castalia longicirrata	185	Plexaura homomalla	285
Castalia mutilata	185	Leptogorgia virgulata	286
Polynoe branchiata	186	Anatriane, Chlaster, Chela, Desma	379
Polynoe nodosa	187	Dichotriane, Orthotriane	379
Sthenelais grubei	188	Orthotriane, Oxca, Raphide	380
Panthalis oculus	189	Oxyhexaster, Pentact, Protriane, Oxyaster ..	380
Eulepis splendida	190	Sanidaster, Sigma, Sigmaspire, Sphaerohexaster, Spherule, Toxa	381
Eulepis fimbriata	190	Trichodragmata, Spiraster	381
Phyllococe magna-oculata	191	Tornote, Strongyle, Style, Tylostylus, Tylole ..	381
Eulalia quinquelineata	192		

THE STOMATOPODA OF PORTO RICO.

BY

ROBERT PAYNE BIGELOW, Ph. D.,

Of the Massachusetts Institute of Technology.

THE STOMATOPODA OF PORTO RICO.

BY ROBERT PAYNE BIGELOW,
Of the Massachusetts Institute of Technology.

The report herewith presented relates to the Crustacea of the order Stomatopoda collected by the *Fish Hawk* in the waters of Porto Rico during the investigations of the U. S. Fish Commission in the winter of 1898-99. Collections were made at 19 dredging stations in the harbors and off the coast of Porto Rico, and many specimens were picked up by collecting parties in shallow water upon the coral reefs and shoals. The collection consists chiefly of two common species, *Gonodactylus cerstedii* Hansen and *Pseudosquilla ciliata* Miers. The three other species represented are *Squilla intermedia* Bigelow and two new species, *Lysiosquilla plumata* and *L. mariaguessensis*.

The Stomatopoda may be distinguished from the other malacostracous crustacea by the fact that the stalked eyes and first pair of antennæ are borne upon distinct movable segments. The carapace is small, leaving four thoracic segments exposed behind it, and the rostrum is separated from it by a mobile joint. The second pair of thoracic limbs are very characteristic of the group, being developed into the large raptorial claws, in which the terminal segment (dactylus) closes upon the penultimate one (manus) like the blade of a penknife. The next three pairs of limbs, although smaller, are of the same pattern, and it is only the last three pairs of thoracic limbs that are used for walking. The abdominal appendages bear tufted gills, except the last pair (uropods), which are armed with a strong prolongation of the basal segment ending in one or two spines, and act with the telson as a powerful tail fin.

For definitions of the technical terms used and for synopses of genera and species not represented in the present collection the reader is referred to the report on the *Albatross* collections (Bigelow '94) and to the more recent memoirs listed on p. 160.

I wish to take this opportunity to express my obligations to Prof. H. C. Bumpus for his kindness in granting me every facility for the study of this collection at the marine laboratory of the United States Fish Commission at Woods Hole.

Figs. 2, 3, 4 were drawn by Miss McKnew; the other figures by the author.

Genus GONODACTYLUS Latreille.

Diagnosis.—Species of this genus are distinguished by the possession of a flexible joint between the sixth abdominal segment and the telson; a strongly built and highly convex hind-body; the dactylus of the raptorial claw being dilated at the base, without lateral teeth, and with a sharp inner edge that fits into a groove on the manus.

Larval form.—A *Gonerichthus* Brooks, recognizable by the following characters: Eyes stalked; appendages I-VII and XIV-XVII present in the earliest stages; telson usually quadrate or hexagonal in general outline, slightly wider than long, longer than outer spine of uropod and notched on the median line, and with never more than four intermediate denticles; body elongated, carapace narrow, shallow, not infolded, without prominent ventro-lateral angles, posterior lateral spines close to dorsal median line and at least half as long as carapace; never any trace of lateral teeth upon the raptorial dactylus.

Gonodactylus cœstedii Hansen. (Figs. 1 and 2.)

Gonodactylus chiragra, Smith, S. I., Brazilian Crustacea, Trans. Conn. Acad., II, p. 41, 1869. Milne-Edwards, A., Nouv. Arch. Mus. Hist. Nat., vol. IV, p. 65, 1868. Martens, E. v., Cubanische Crust. Arch. f. Naturg. Jahrg. 33, Bd. II, p. 147, 1872. Brooks, Voyage of H. M. S. *Challenger*, XVI, II, p. 56, 1886. Brooks, Mem. Nat. Acad. Sci. v, p. 353, pls. I and III, 1892. Bigelow, Stomatopoda collected by the steamer *Albatross*, Proc. U. S. Nat. Mus., vol. XVII, p. 495, 1894.

Gonodactylus orstedii, Hansen, H. J., Isopoden, Cumaceen, und Stomatopoden, Ergebnisse der Plankton-Expedition der Humboldt-Stiftung, Bd. II, G. c., footnote p. 65, 1895. Rankin, Crustacea from the Bahamas, Ann. N. Y. Acad. Sci., XI, p. 253, 1898. Borradaile, Crustaceans from the South Pacific, Proc. Zool. Soc. Lond., 1898, p. 35, pl. v, fig. 3.

Diagnosis.—A *Gonodactylus* having cylindrical eyes; the rostrum transverse, with an acute median spine as long as half the width of the rostrum and elevated somewhat above the rounded lateral angles; a smooth carapace, nearly oblong, the posterior margin being very slightly concave and the rounded anterior lateral angles projecting forward; hind-body strongly convex; the lateral margins of the first exposed thoracic segment not produced, the margins of the next three segments rounded; the first five abdominal segments smooth above, with marginal carinæ and rounded posterior lateral angles; sixth abdominal segment with 6 longitudinal dorsal carinæ, the submedian and intermediate pair being well rounded prominences more or less elliptical in outline and often possessing a minute posterior spine, which may, however, be obsolete or absent, the lateral pair narrow, ending in the

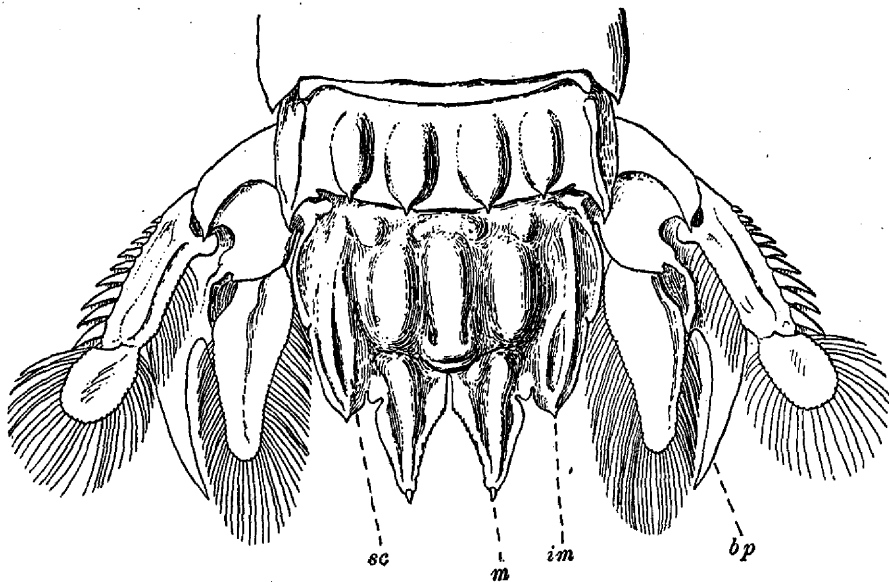


FIG. 1. Telson and adjacent parts of *Gonodactylus cœstedii*. Female, $\times 5$; *sc*, supplementary carina; *im*, intermediate spine; *m*, mobile tip of submedian spine; *bp*, basal prolongation of uropod.

strong posterior lateral angles, and with a transverse carina extending between the ends of the lateral carinæ and, when the abdomen is fully extended, hidden under the posterior margin of the fifth segment; 3 high rounded longitudinal dorsal prominences on the telson, submedian spines large, with minute mobile tips and finely serrated on the inner edge, intermediate spines prominent, and lateral pair obsolete; 6 marginal carinæ, each intermediate one having on its inner side a shorter supplementary carina; the surface of these sculpturings being smooth and polished, except that the supplementary carinæ are sometimes slightly serrated and the intermediate central prominences sometimes show faint indications of a posterior spine; and the basal prolongations of the uropod ending in 2 flattened curved spines, of which the outer one is the longer.

General description.—This form is so very similar to *G. chiragra* Fabr. that most authors have identified it with that species. S. I. Smith ('69) stated that he found a slight difference between the American species and the true *G. chiragra*, but Hansen ('95) is the first to describe this as a distinct species and to point out the character by which it can be recognized. This distinguishing characteristic is the small supplementary carina (*sc*, fig. 1) on the inner side of each intermediate marginal

carina on the telson. This is so small a character by which to separate two species, otherwise apparently identical, that one would be inclined to suspect that this might be a case of individual variation. But through the courtesy of Dr. Walter Faxon I have been able to examine the material in the Museum of Comparative Zoology at Harvard College and to compare specimens of *G. arstedii* identified by Dr. Hansen with specimens from 18 localities on the Atlantic, besides those of the present collection, and with specimens of *G. chiragra* from 16 localities in the Pacific and Indian oceans. I found that the difference pointed out by Hansen is perfectly constant. In every specimen of *G. chiragra* from the Indo-Pacific region the valley between the intermediate marginal carina and the central prominences

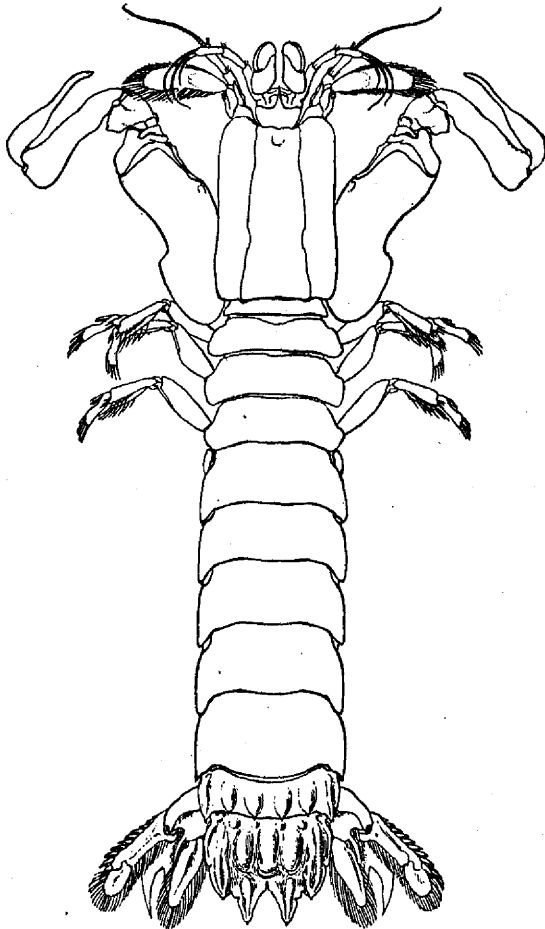


FIG. 2. *Gonodactylus arstedii*, Hansen, $\times 2$; not accurately to scale.

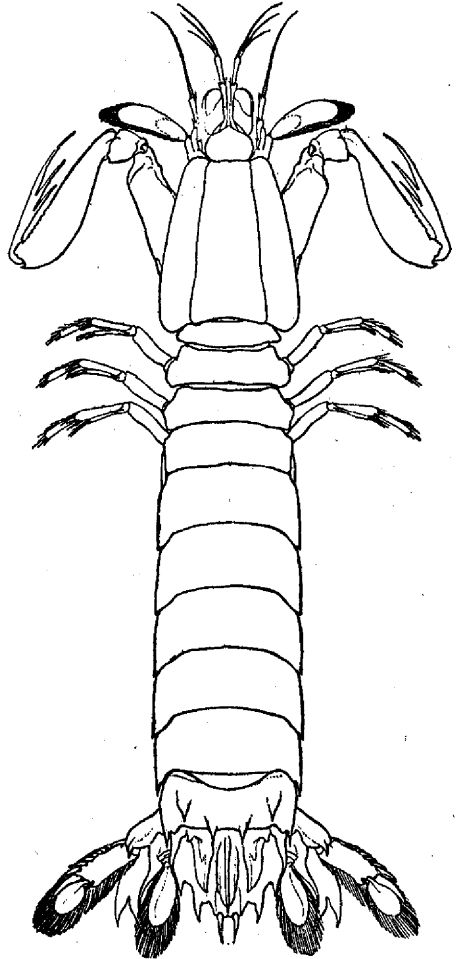


FIG. 3. *Pseudosquilla ciliata*, Miers, male, $\times 2$; not accurately to scale.

of the telson presented a smooth, even slope, without trace of additional carina. On the other hand, every specimen from the Atlantic region possessed the supplementary carina, somewhat variable in length and elevation, but always distinctly present. It may be well to note here that in order to see this feature, as well as the other sculpturings of the telson, distinctly, the surface must be dry. In a specimen freshly lifted from a bottle of alcohol and covered with the liquid it is not easily visible.

G. arstedii is readily distinguished from *G. spinosus* Bigelow and *G. spinosissimus* Pfeffer by the absence of prickles on the dorsal surface; and it is separated from *G. glabrous* Brooks and *G. graphurus* Miers by the possession of only three central longitudinal carinae on the telson. There are small

additional elevations on the telson at the bases of the intermediate denticles, in front and a little on one side of the submedian central prominences, behind the median prominence, and along the margins of the submedian and intermediate spines, fig. 1. In front of the median prominence are two small pits on very slight elevations of the surface and there are two grooves on the sides of the central prominence near its posterior end. The first antennæ are fairly long, the second joints extending beyond the eyes. The second pair extend nearly as far forward as first. The antennary scale slightly exceeds half the length of the carapace; the carapace is about one-fourth the length of the body. The appendages to the walking legs are linear. The basal prolongation of the uropod is broad and flat, and the two spines are curved inward. There is no tooth on the margin of either spine. The distal segment of the exopodite is about half the length of the proximal one, which bears 11 movable spines besides a small immovable terminal one.

Color.—The coloring is very variable, both in shade and pattern, and is distinctly protective; varying from a mottled green and white to a nearly pure olive green.

Size.—Length of full-grown specimens, about 5 cm.

Geographical distribution.—This species is common in the tropical Atlantic from the West Indies to Brazil, and is the only form of *Gonodactylus* reported from this region. In the waters of Porto Rico the *Fish Hawk* collected a large number of specimens from various stations on the eastern, southern, and western coasts in depths varying from 21 fathoms, at station 6089, west of the island of Vieques, to a few feet of water on coral reefs. The most numerous collections were made with tangle at station 6092, north of Vieques, depth 16 fathoms, coral bottom, and by shore collecting in Ensenada Honda, island of Culebra.

Life history.—The early larval stages of this species have been fully described and illustrated by Brooks ('92). The eggs are deposited in burrows excavated by the females in pieces of coral rock lying upon the sand flats. The larva hatches in an *Erichthus* form with very short eye-stalks and the sutures between the fifth and sixth and between the sixth and seventh abdominal somites undeveloped. The abdomen bears five pairs of appendages. The first molt occurs about sixty hours after hatching, and the second about a week later, when the larva passes into the typical form of the *Gonerichthus*. Before the second molt Brooks's larvæ remained near the bottom of the aquarium and fed upon the eggs of an unknown species of Nudibranch; but after the second molt they refused this food and swam at the surface. Suitable food for this stage not having been discovered, it was impossible to rear the larvæ further. Later stages were obtained, however, by collecting with the skimming net, and they are described in the memoir.

Genus PSEUDOSQUILLA (Guérin) Dana.

Diagnosis.—Stomatopoda with the sixth abdominal segment not fused to the telson; the hind body smooth, very convex, and narrow; the dactylus of the raptorial claw not dilated at the base and provided with not more than three lateral teeth; the submedian spines of the telson long and with movable tips; and not more than four intermediate denticles, usually one.

Larval form.—We are indebted to Claus for the determination of the larval form of this genus, to which Brooks ('86) has given the name *Pseuderichthus*. It may be recognized by the following characters: Eyes stalked, appendages I-VII and XIV-XVII present in the earliest stages, hind body very long; telson longer than wide, sometimes ovate in general outline; carapace narrow, at least twice as long as wide, short, without prominent ventro-lateral angles, short rostrum, and posterior lateral spines short, usually only one-fourth or one-third as long as the carapace, and placed near the dorsal median line.

Pseudosquilla ciliata Miers. (Figs. 3 and 4.)

? *Squilla ciliata*, Fabricius, Ent. Syst., II, p. 512, 1793.

Squilla stylifera, Lamarck, Hist. Anim. sans Vert., v, p. 189, 1818. Latreille, Encycl. Meth., x, p. 472, 1825.

Pseudosquilla stylifera, Dana, U. S. Expl. Exp., XIII, Crustacea, I, p. 622, 1852. ? Von Martens, Arch. f. Naturg., xxxviii, p. 146, 1872.

Pseudosquilla ciliata, Miers, Squillidæ, Ann. and Mag. Nat. Hist., (5), v, p. 108, 1880. Brooks, Voyage of *Challenger*, xvi, p. 53, 1886. Bigelow, Stomatopoda collected by the steamer *Albatross*, Proc. U. S. Nat. Mus., xvii, p. 499, 1894. Hansen, Isopoden, Cumaceen, und Stomatopoden, Engb. Plank. Exp., II, G. c., p. 86, 1895. Rankin, Crustacea from the Bahamas, Ann. N. Y. Acad. Sci., xii, p. 253, 1898.

Diagnosis.—A *Pseudosquilla* with cylindrical eyes; the dactylus of the raptorial claw slender with three teeth, including the terminal one; a smooth rostrum without spines or acute angles, wider than long; lateral margins of the exposed thoracic segments slightly produced, the first acute, the others more or less rounded, the second obliquely truncated, and the fourth notched; the first five abdominal

segments smooth and without carinæ or spines, except posterior-lateral spines on the fourth and fifth segments; sixth segment with 6 strong spines, the intermediate pair arising farther forward than the others, about half way between the anterior and posterior margins; a high, narrow crest ending in a spine and 6 other carinæ on the telson, one pair on the lateral margins, and two pairs grouped near the crest, the pair nearest the crest being the smaller; 6 marginal spines, the submedian pair long and mobile; 2 simple spines on the basal prolongation of the uropod, of which the inner one is the longer; 8 to 10 mobile spines on the exopodite.

General description.—The specimens in the collection from Porto Rico differ from Miers's description in that the posterior margin of the carapace is not straight, but distinctly concave, and in having minute posterior lateral spines on the fourth as well as the fifth abdominal somite. In his figure the basal prolongation of the uropod is represented as extending as far as the tip of the exopodite, and the endopodite appears to equal the proximal segment of the exopodite in length. In our specimens the basal prolongation extends only so far as the tip of the endopodite, which, however, is considerably longer than the proximal segment of the exopodite. (In fig. 4 the basal prolongation is represented as a little too long, and the spines should be more slender and less sinuous on their inner margins.) The distal segment of the exopodite is less than two-thirds the length of the proximal one. Brooks found these segments to be equal in specimens from the Pacific, but the distal one shorter in specimens from St. Thomas. He found also that the posterior lateral angles of the fourth abdominal segment were rounded and without spines in specimens from the Pacific. His

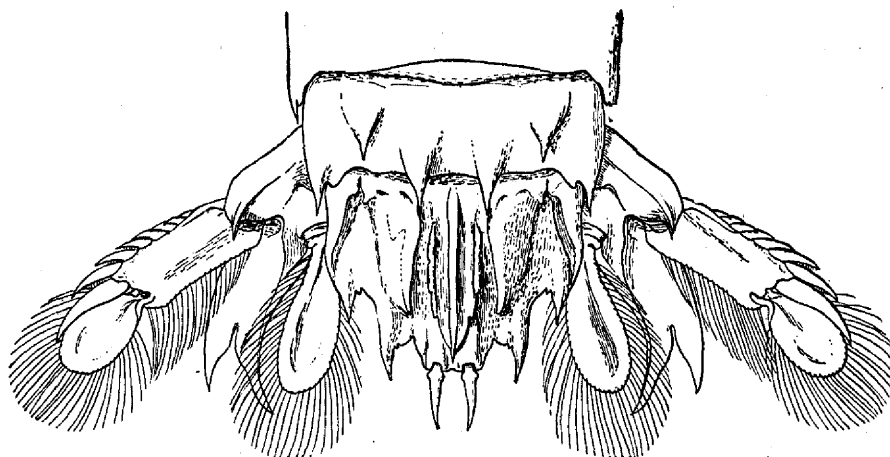


FIG. 4. Telson and adjacent parts of *Pseudosquilla ciliata*. Same specimen as Fig. 3, $\times 4$.

specimens from St. Thomas differed from those from Honolulu in having the spines of the basal prolongation of the uropod equal in length. But our specimens from Porto Rico agree with those from the Pacific in having the inner spine the longer. As Brooks has pointed out, this species probably varies to a considerable extent, and the slight differences observed do not furnish sufficient ground for dividing it. *P. ciliata* is distinguished from *P. ornata* Miers by its cylindrical eyes, the eyes of *P. ornata* being flattened and club-shaped. It is separated by the number of carinæ on the telson from all other species having a similar basal prolongation to the uropod.

Color.—Living specimens observed at Bimini (Bigelow, '94) showed great variation in coloring, which closely resembled that of *Gonodactylus arstedii*.

Size.—The largest specimen in the present collection measures 8 cm. in length.

Geographical distribution.—This is perhaps the most widely distributed of all the Stomatopods. It is common in the West Indies, living on shoals of coral sand associated with *Gonodactylus arstedii*, and is found also at the Cape Verde Islands. In the Indo-Pacific region it has been taken from the Red Sea, Mauritius, Ceylon, Japan, and from various localities in the Malay Archipelago, South Sea Islands, and Hawaii. On the Porto Rico expedition the *Fish Hawk* obtained specimens in San Juan Harbor, Ensenada Honda in Culebra, Mayaguez Harbor, Boqueron Bay, Fajardo, Playa de Ponce, and

at several stations in the shallow sound between St. Thomas, Culebra, and Porto Rico by dragging the tangle over the coral bottom. The greatest depth was 20 to 23 fathoms, at station 6079, off St. Thomas.

Life history.—Hansen ('95) identifies the larval form of this species under the name *Pseuderichthys communis*. In the earlier stages it can not be distinguished from the very similar larva of *Pseudosquilla oculata* Brulle (*Pseuderichthys distinguendus* Hansen). But when fully developed it may be recognized by its smaller size, 21 to 24 mm., and the possession of 8 distinct spines on the uropod (Hansen, l. c., pl. VIII, fig. 5). *P. distinguendus* of this size does not have the upper spines of the uropod distinct. When fully developed this species is longer than *P. communis*—over 24 mm.—and has 10 to 11 of these spines.

Between this stage and the adult form there is an intermediate stage (Claus, '71, figs. 26 and 27c). We might call it the *monodactyla* stage, for, according to Hansen, *Pseudosquilla monodactyla* of Milne-Edwards is this stage of *P. oculata*. The carapace has lost the larval spines and the whole appearance of the animal is very much like the adult *Pseudosquilla*; but on the dactylus of the raptorial claw only the rudiments of the two lateral teeth may be seen beneath the integument, and the telson has only the median carina, the others not being developed. In our specimens, however, there are slight elevations on the telson representing the lateral marginal and external pair of central carinae. Hansen has two specimens of this stage of *P. ciliata* that measure from the tip of the rostrum 17.5 and 21.3 mm. In the present collection there are five specimens in this stage from three localities. They were taken in Ensenada Honda in Culebra, San Juan Harbor a quarter of a mile from Morro Castle with the dredge at a depth of 4 to 7½ fathoms, and at station 6092 between Culebra and Vieques with the tangle at a depth of 16 fathoms. These specimens have the following lengths, 16, 17.5, 17.5, 19, 19 mm. Three of them have 9 mobile spines on the uropod and two have 8.

It is probable that at the next molt these would pass into the adult form, and that the growth at that time results in a thickening of the body rather than in increase in length. In fact, there seems to be a slight shortening of the body, for in the collection there are five small specimens of the adult form measuring 16, 17, 17, 17.5, and 17.5 mm., respectively, but their bodies are much thicker and more strongly built than the larvæ in the *monodactyla* stage. One of these has 8 mobile spines on the uropod; the others have 9.

Genus *LYSIOSQUILLA* Dana.

Diagnosis.—"Stomatopoda having the sixth abdominal segment separated from the telson by a mobile joint; the hind-body depressed, loosely articulated, and wide; the dactylus of the raptorial claw without a basal enlargement and with not less than five marginal teeth; no more than 4 denticles, often only 1, between the intermediate and submedian marginal spines of the telson, which is usually wider than long."

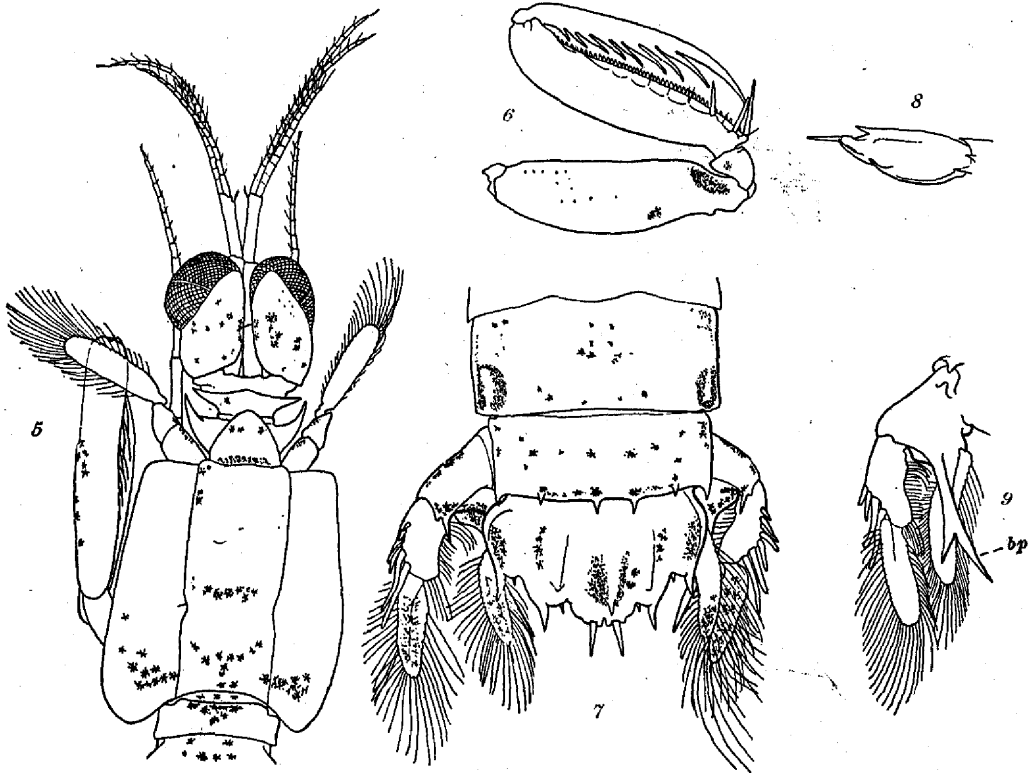
Larval form.—A *Lysioerichthys*, Brooks, having stalked eyes, appendages I-VII and XIV-XVII present in earliest stages; telson wider than long, with never more than four intermediate denticles; body short; carapace large and wide, infolded on the ventral side, with prominent ventral angles, and posterior lateral angles widely separated from the median line; hind-body wide and flat.

Lysiosquilla plumata, sp. nov. (Figs. 5 to 9.)

Provisional diagnosis.—A *Lysiosquilla* having the corneal portion of the eye nearly globular and set obliquely upon the strong, nearly cylindrical eye-stalk; the dactyli of the raptorial claws with nine marginal teeth, including the terminal one; antennary scale small, less than half the length of the carapace; appendages to the walking legs linear; the rostrum shorter than wide, triangular, with rounded apex, hardly overlapping the ophthalmic segment; the carapace smooth, nearly quadrate, without acute angles, posterior lateral lobes slightly produced backward; the hind-body smooth; 6 marginal spines on the sixth abdominal segment, the intermediate pair arising slightly in front of the margin; the telson wider than long, convex above with 3 dorsal carinae, of which only the middle one ends in a posterior spine, narrow lateral marginal carinae, 6 marginal spines, submedian pair long and mobile, the other pairs shorter and curved slightly upward, no submedian denticles, 1 intermediate and 1 lateral one on each side, arising from the ventral surface of the telson and partially covered above by a broad lobe of the margin; uropods with a very narrow basal prolongation, angled on the ventral side, without serrations, and terminating in 2 stout spines, of which the inner one is the longer; and 7 mobile spines on the uropod, the distal one not much more than half the length of the paddle.

Remarks.—It is not possible to give more than a provisional description of this species at present, because the only material available is one very small male specimen. It is very probable that full-grown individuals will be found to differ from this specimen in important details. This is especially probable in regard to the female, for sexual dimorphism is not uncommon in other species of the genus. Nevertheless, the form here described differs so clearly from any previously described species of *Lysiosquilla* that it seems worth while to place it upon record. The most nearly related species are *Lysiosquilla spinosa* Wood-Mason and *L. maiaguesensis* n. sp. It differs from the former in the absence of spines on the submedian dorsal carinae of the telson; in having the mobile spines of the telson longer than the others, and in having no submedian and only one intermediate denticle. (Fig. 7.) The differences from the latter will be discussed when we come to that species.

L. plumata is not identical with *L. tricarinata* (Gray), White ('47), for according to Miers ('80) that species has about a dozen minute intermediate denticles.



FIGS. 5-9, *Lysiosquilla plumata*. Male, camera drawings, $\times 11\frac{1}{2}$. Fig. 5, head and carapace. Fig. 6, right raptorial claw. Fig. 7, last three abdominal segments. Fig. 8, side view of telson. Fig. 9, right uropod viewed from ventral side; bp, basal prolongation.

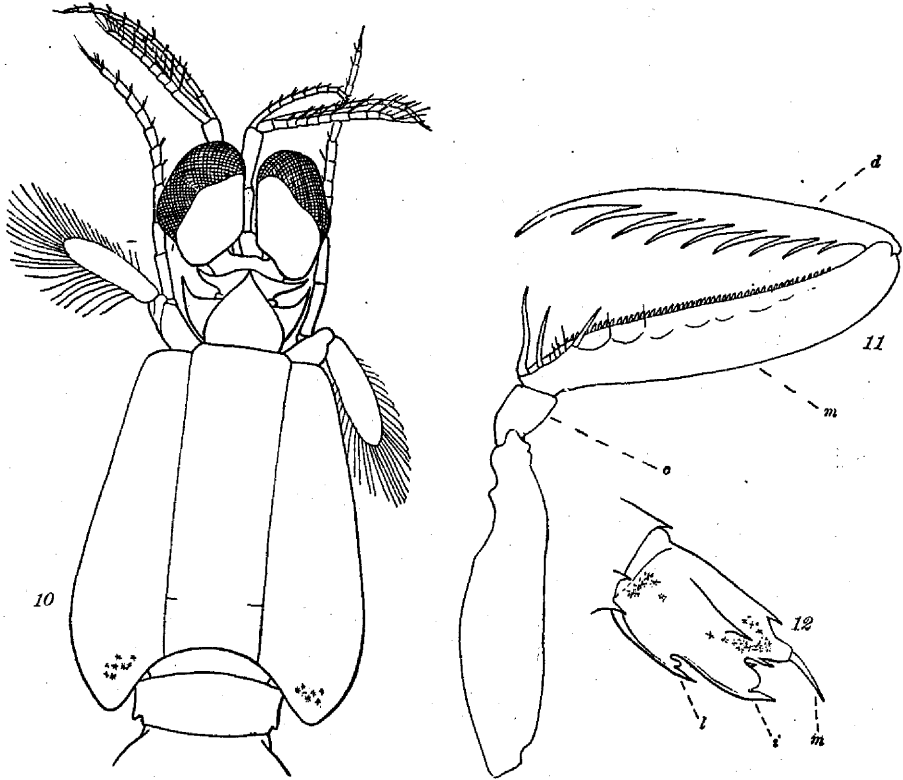
Color.—The color pattern is indicated in the alcoholic specimen by the presence of dark branching pigment cells. There is an eye-spot at each posterior lateral angle of the fifth thoracic segment, a dark spot on the two sides of the central carina of the telson, and accumulations of pigment on the sides of the telson, the terminal segments of the uropod, the posterior lobes of the carapace, and at the base of the rostrum. More scattered pigment cells indicate a symmetrically mottled pattern covering the whole dorsal surface. (Figs. 5 and 7.)

Size.—The specimen in hand has the following dimensions: Total length, 15.0 mm.; length of carapace on mid-line, 2.8 mm.; width of carapace, 2.6 mm.; width of fifth abdominal segment, 3.0 mm.; length of telson, 1.4 mm.; length of antennary scale, 1.2 mm.

Locality.—One male specimen was taken by the *Fish Hawk* at station 6062 in Mayaguez Harbor, Porto Rico, using the dredge on a bottom of sand, mud, and shells, at a depth of 25 to 30 fathoms.

Lysiosquilla maiaguesensis, sp. nov. (Figs. 10 to 13.)

Provisional diagnosis.—A *Lysiosquilla* having triangular eyes, the corneal axis oblique and shorter than the peduncular one; raptorial claws with a slender dactylus bearing 8 to 10, usually 9, marginal teeth; small antennary scales, less than half the length of the carapace; appendages to the walking legs linear; the apex of the broadly ovate rostrum acute; a smooth carapace slightly narrowed in front, with rounded angles, the posterior lateral angles being produced backward as broad lobes; the hind-body depressed and smooth, except for very narrow lateral marginal carinae on the first five abdominal segments, and six spines on the posterior margin of the sixth abdominal segment, the intermediate pair being continuous with low carinae; the telson wider than long, convex, with 3 dorsal carinae ending posteriorly in spines, narrow lateral marginal carinae, 6 marginal spines, of which the submedian pair are long and mobile, the intermediate ones large, extended downward below the ventral surface



FIGS. 10-12, *Lysiosquilla maiaguesensis*. Male, camera drawings, $\times 11$. Fig. 10, head and carapace. Fig. 11, left raptorial claw; c, carpus; d, dactylus; m, manus. Fig. 12, side view of the telson, $\times 11$; m, submedian spine; i, intermediate spine; l, lateral spine.

of the telson, and with a large rounded lobe on the dorsal side, lateral pair smaller, similarly curved and lobed; no submedian denticles, 2 intermediate and 1 lateral one on each side arising from the margin; about 12 fine sharp serrations on the inner margin of the broad basal prolongation of the uropod, of which the inner tooth is much the longer; and 6 mobile spines on the exopodite, the distal one extending to or beyond the tip of the paddle.

Remarks.—Unfortunately, the material is too scanty to allow more than a provisional description of this species, 2 small males being all that is afforded by the collection. It is closely related to the preceding, but differs from it in a number of striking peculiarities. The first pair of antennae are shorter, the eyes are larger, the rostrum is as long as it is broad, and acute. (Compare figs. 5 and 10.) But the most remarkable differences are to be found in the telson and the uropods. (Compare figs. 12 and 13 with figs. 7, 8, and 9.) The telson differs not only in being longer and having three dorsal spines, but to a greater degree in the form of the marginal spines and the mode of origin of ctenites.

In the uropods the basal prolongation has an entirely different form, and the segments of the limb show marked dissimilarities of shape and proportion. It will be noted that in the form of the telson this species closely approaches the genus *Pseudosquilla*.

Color.—In the alcoholic specimens there is a well-marked band of pigment on each side extending the whole length of the hind-body. These bands are connected by fine transverse lines at the posterior margin of each segment. The lobes of the carapace and the posterior part and sides of the telson are also pigmented.

Size.—The two male specimens have the following dimensions in millimeters:

	No. 1.	No. 2.
Total length.....	18.5	22.5
Length of carapace on mid-line.....	3.5	4.0
Length of telson.....	2.0	2.1
Width of carapace.....	3.4	4.2
Width of fifth abdominal segment.....	3.5	4.5

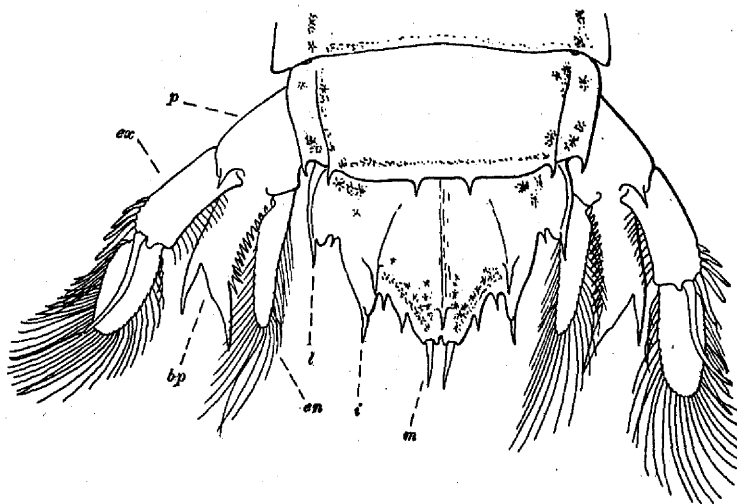


FIG. 13. Telson and adjacent structures of *Lysiosquilla mayaguezensis*. Male, camera drawing, $\times 11$; bp, basal prolongation of the uropod; en, endopodite; ex, exopodite; p, protopodite; m, submedian spine of the telson; i, intermediate spine; l, lateral spine.

Locality.—The *Fish Hawk* took three small specimens (one mutilated) at station 6066 in Mayaguez Harbor, with the beam trawl, on a sand and mud bottom, at a depth of 161 to 172 fathoms.

Life history.—Unknown.

Genus *Squilla* Fabricius.

Diagnosis.—"Stomatopoda having the telson attached to the sixth abdominal segment by a mobile joint; the hind-body depressed and wide; the dactylus of the raptorial claw with usually not more than 6 teeth; as a rule more than 4 intermediate denticles on the telson, which is usually longer than wide; and the inner basal spine of the uropod the longer of the two."

Larval form.—An *Alima*, Leach, having stalked eyes; appendages I to VII and XIV to XVII present in earliest stages; a telson generally octagonal in general outline with numerous intermediate denticles; the inner basal spine of the uropod longer than the outer; the body greatly elongated; carapace flattened, elongated, and narrow (width usually about one-fourth the length); usually several thoracic segments exposed.

Squilla intermedia Bigelow.

Squilla intermedia Bigelow, Johns Hopkins Univ. Circ. 88, 1891; Proc. U. S. Nat. Mus., XVII, p. 530, fig. 19.

Diagnosis.—A *Squilla* having very large, nearly T-shaped eyes; very large and strong raptorial claws, with 6 teeth upon the dactylus; the rostrum narrowed in front and provided with well-marked median and lateral carinae; 5 strong carinae on the carapace, the median one bifurcated in front and

behind, and the lateral one ending in spines at the anterior lateral angles; posterior lateral margin angled; the lateral margin of the fifth thoracic segment produced into a strongly sickle-shaped acute spine; of the sixth and seventh obliquely truncated and very acute; 8 prominent carinæ on the abdominal segments, all ending in spines except the submedian of the first 4 segments; a low crest on the telson, ending in a small spine, a post-anal keel without a spine, the dorsal and ventral surfaces of the telson marked by numerous curved lines of very fine pits, 6 marginal spines, and 4 to 6 submedian denticles, 10 to 13 intermediate, and 1 lateral one; the crest and dorsal margin of the telson very much thickened in the male; the marginal thickening being continuous between the intermediate spines.

Remarks.—This species stands in an intermediate position between two Pacific forms, *S. panamensis* Bigelow and *S. biformis* Bigelow, from both of which it may be distinguished most easily by the character of the thickening of the telson in the males. This feature, as well as the number of denticles, serves also to distinguish full-grown specimens from the nearest Atlantic form, *S. empusa* Say. The latter has 3 to 5 submedian denticles, 6 to 10 intermediate, and 1 lateral one; and never has any thickening of the carinæ on the abdomen or of the margin of the telson, either in males or females.

In the Porto Rico collection there are 4 young males, the largest 5.55 cm. and the shortest 2.25 cm. in length, which seem to be *S. intermedia*, although they differ from the type specimens in some particulars. The antennary scales are only one-half instead of three-quarters the length of the carapace; the margins of the sixth and seventh thoracic segments (the second and third exposed ones) are not acute, but rounded at the apex, and bear an anterior lobe well marked in the sixth and minute in the seventh; in 3 of the specimens the marginal carinæ of the first and second abdominal segments are the only ones on those segments that bear spines; the denticles on the telson are 3-4, 8-9, 1; and the exopodite of the uropod bears 9 mobile spines. In the largest one of these specimens there are, however, thickenings of the margin of the telson that suggest the beginnings of the structure characteristic of the type. When we remember that this species was described from only two specimens, a male and a female, and that the specimens under consideration are evidently immature, it would seem better to regard them as all of one species, pending further study of the fully adult form and the younger stages.

Size.—The largest of the type specimens was 10.5 cm. in length.

Locality.—Gulf of Mexico and tropical Atlantic. The specimens collected by the *Fish Hawk* were all taken in Mayaguez Harbor with the beam trawl, at 7½ to 18 fathoms, on a mud bottom.

Life history.—Unknown.

THE MORE IMPORTANT LITERATURE ON STOMATOPODA.

- BIGELOW, R. P., '94. Report upon the crustacea of the order Stomatopoda collected by the steamer *Albatross* between 1885 and 1891, and on other specimens in the U. S. National Museum. Proc. U. S. Nat. Mus., xvii, pp. 489-550. 1894.
- BORRADALE, '98. On some crustaceans from the South Pacific. Part 1. Stomatopoda. Proc. Zool. Soc. Lond. 1898, pt. 1, pp. 32-38, pl. v-vi.
- BROOKS, W. K., '79. The larval stages of *Squilla empusa*. Johns Hopkins Univ. Studies Biol. Lab., 1, No. 3, p. 143. 1879.
- BROOKS, W. K., '86. Report on the Stomatopoda. Voyage of H. M. S. *Challenger*. Zool. xvi, ii. 1886.
- BROOKS, W. K., '92. The habits and metamorphosis of *Gonodactylus chiragra*. (In Brooks and Herrick, The Embryology and Metamorphosis of the Macrura. Mem. Nat. Acad. Sci., v, No. 4, pp. 352-360. 1892.)
- CLAUS, C., '71. Die Metamorphose der Squilliden. Abhandl. d. Gesel. Wiss. Gottingen. xvi, p. 1. 1871.
- FAXON, W., '82. Crustacea (Selections from embryological monographs) Bull. Mus. Comp. Zool. ix, No. 1. 1882.
- GERSTAECKER, A., '89. Arthropoda. Bronn's Klassen und Ordnungen des Thier-Reichs, Bd. v, Abth. ii, pp. 686-751, pl. 64-68. 1889.
- HANSEN, H. J., '95. Isopoden, Cumaceen und Stomatopoden der Plankton-Expedition. Erg. d. Plankton-Exped. d. Humboldt-Stiftung. Bd. ii, G. c. 1895.
- MIERS, E. J., '80. On the Squillidæ. Ann. and Mag. Nat. Hist. ser. 5, vol. v, pp. 2-30 and 108-127. 1880.
- POCOCK, R. I., '93. Report upon the stomatopod crustaceans obtained by P. W. Basset-Smith, Esq., surgeon R. N., during the cruise in the Australian and China seas of H. M. S. *Penguin*, Ann. and Mag. Nat. Hist. (6), vol. ii, 1893, pp. 473-479, pl. xx b.

INDEX.

- aaptos*, *Ancorina* 388.
 Suberites 388.
 Tubercella 388.
abbreviatus, *Eurypanopeus* 30.
 Panopeus 30.
abdita, *Heliastraea* 302.
abranchiata, *Glycera* 200.
Acabaria 273.
Acampogorgia 275.
Acanella 274.
acantha, *Actæa* 33, 34.
acanthochirus, *Glypturus* 93, 94.
Acanthogorgia 275.
 aspera 281.
Acanthoisis 274.
Acanthonyx 52, 60.
 debilis 60.
 emarginatus 60.
 petiverii 60.
Acanthopus 19.
acanthurus, *Bithynis* 123.
 Palaemon 123.
acanthus, *Cancer* 34.
acerosa, *Gorgonia* 287.
 Pterogorgia 287.
Achelous depressifrons 44, 45.
 ordwayi 44, 46.
 ruber 51.
 sebae 44, 46.
 spinicarpus 44, 47.
 spinimanus 44, 45.
 tumidulus 51.
Acis 275.
 solitaria 285.
ackleanus, *Pachycheles* 135.
ackloyi, *Zoroaster* 237.
acropora, *Heliastraea* 301.
 Madrepora 301.
 Orbicella 201, 301, 302.
Actæa 24, 33.
 acantha 33, 34.
 bifrons 33, 34.
 nodosa 33.
 rufopunctata 33.
 rufopunctata nodosa 33.
 setigera 33.
 spinifera 34.
Actinactis flosculifera 346.
Actina 379.
Actinia anemone 366.
 annulata 355.
 bicolor 359, 363.
 crucifera 363.
 egletes 363.
 flosculifera 346.
 granulifera 347, 348, 368.
 heliathanus 365, 366.
 scutellifera 368, 370.
 sociata 333.
 sol 363.
 solifera 355.
 tricolor 359, 363.
 ultramarina 368.
Actinia 326, 352, 392.
Actinaria 323, 324, 325, 326, 327, 329,
 330, 342.
Actinaria 326, 327, 329, 342, 363, 364.
Actinodendridæ 364.
Actinometra meridionalis 235.
 rubiginosa 235.
Actinoporus 328, 364.
Actinoporus elegans 364.
Actinotryx 328, 363, 364.
 sancti-thomæ 363.
Actinozoa 324.
aculeata, *Hyas* 77.
 Othonia 77.
 Pitho 77, 78.
aculeatus, *Cancer* 66.
 Mithrax 66, 67.
acuta, *Hirentia* 404.
 Polytheres 404.
acuticornis, *Mithrax* 65, 66.
 Nemausa 66.
acutidens, *Callinectes* *sapidus* 47.
adactyla, *Hippa* 138.
Adamsia 358, 359, 361.
 egeletes 359.
 polyptus 359.
 sol 359.
 tricolor 359.
adunca, *Orbiculina* 416.
Æga ecarinata 171.
Ægeon 347.
Ægidæ 164, 171.
Æpinus 52, 54.
 septemspinus 54.
æquinoctialis, *Scyllarides* 97.
 Scyllarus 97.
affinis, *Munida* 147.
 Palaemon 125.
africanus, *Palaemon* 123.
Agaricia 291, 310.
 agaricites 326.
 calleii 291, 311.
 elephantulus 291, 310.
 Agaricidæ 309.
 agaricites, *Agaricia* 326.
 agaricus, *Porites* 317.
 agassizii, *Eucratodes* 35, 36.
 Mülleria 259.
Agelas schmidtii 398.
agilis, *Podarke* 185.
agonus, *Lambrus* 79.
Aiptasia 354, 357.
 annulata 329, 355, 357, 358, 372, 374.
 solifera 355, 357, 358.
 tagetes 355.
Aiptasia 329, 354.
alata, *Arctidea* 202.
albicans, *Cycopoda* 6.
 Cycopoda 6.
alboinfectus, *Lineus* 225, 228.
albonasus, *Lineus* 227.
Albunea gibbesii 139.
 oxyophthalma 139.
 symnista 139.
alcicornis, *Millepora* 291, 318.
Alcirona hirsuta 169, 170.
Alcironidæ 164, 169.
Aleyonacea 269.
Aleyonaria 268, 269, 324, 330.
Aleyonidæ 269, 270.
Aleyonium 270.
Alemo seychellensis 388.
Alcididæ 328, 351.
Alphéens 104.
Alpheidæ 4, 91, 101.
Alpheine 104.
Alpheus 104, 105.
 armatus 105, 108.
 bermudensis 107.
Alpheus candei 105.
 crustifrons 105, 106.
 dentipes 105.
 floridanus 105, 107.
 formosus 105, 106.
 heterochelis 105, 107.
 intrinsecus 109.
 macrocheles 105, 106.
 megacheles 105.
 minus 107, 109.
 neptunus 110.
 obeso-manus 106.
 packardii 105, 107.
 poeyi 106.
 præcox 109.
 rostratipes 105, 108.
 sauleyi 109.
 var. brevicarpus 109.
 longicarpus 110.
 streptochirus 106.
 transverso-dactylus 105.
 tridentulatus 109.
alternata, *Luidia* 236.
alternatus, *Paliurus* 12.
amaranthus, *Pachychalina* 391.
 Phorbis 391.
Amathia hystrix 62.
americana, *Anchistia* 121.
 Ethusa 89.
 Ethusa mascarone 89.
 Phyllangia 299.
 Renilla 279.
americanum, *Gnathophyllum* 126.
americanus, *Arctus* 97.
 Cerianthus 329, 330.
 Chlorodius 27.
 Eupanopeus 28, 29.
 Leptodius 27.
 Panopeus 29.
 Parapenæus 101, 102.
 Perichimenes 121.
 Scyllarus 97.
Ammodiscus incertus 416.
Ammothoa 271.
Ammotrypane fimbriata 207.
amœna, *Porcellana* 135.
amœnus, *Petrolisthes* 135.
Ampharetidæ 206.
Ampheteles nasuta 206.
Amphitetidæ 206.
Amphiphaps 275.
Amphimedon arborescens 392.
Amphiodia planispina 241, 247.
 pulchella 241, 248.
 trisel 241, 248.
Amphinome microcarunculata 194.
Amphinomidæ 194.
Amphipolus stearnsii 241, 248.
Amphipholis goessii 241, 247.
 gracillima 251.
 limba 241, 247.
 subtilis 241, 247.
Amphipsila fulva 245.
 maculata 245.
Amphistegina lessonii 416.
Amphura bihamula 241, 247.
 hexupsa 241, 247.
 stimpsoni 241, 247.
Anamathia hystrix 62.
ananas, *Explanaria* 303.
 Fava 303.

- ananas, Madrepora 303.
 Parastreia 303.
 Anasimus 52, 58.
 fugax 59.
 Anatriene 379.
 Anchistia americana 121.
 Ancorina aptos 388.
 fibrosa 385.
 anemone, Actinia 366, 367.
 Discosoma 365, 366.
 Homostichanthus 365, 366, 367.
 anguiculus, Gorgonia 284.
 angularis, Miliolina 416.
 angulata, Ophiothrix 240, 244, 268.
 angustifrons, Pisosoma 135.
 Anilocra laticauda 172.
 anisodon, Othonia 77.
 Pitho 77, 78.
 annularis, Astrea 301.
 Heliastraea 301.
 Madrepora 301.
 Orbicella 301.
 annulata, Actinia 355.
 Aiptasia 329, 356, 357, 358, 372, 374.
 Astroporpa 241, 251.
 Dysactis 355.
 Vermilia 210.
 annulifilis, Terebella 205.
 anomala, Aplysina 377, 407.
 anomala, Madrepora 312.
 anomalini, Brachyura 131.
 Maerura 131.
 Anomalina ariminensis 416.
 Anomura 131.
 Antedon hagenii 235.
 antellarum, Diplobdella 219.
 Anthelia 270.
 Anthemiphyllia patera 311.
 Antheopsis 364.
 Anthias 141.
 Anthogorgia 275.
 Anthomastus 270.
 Anthomuricea 275.
 Anthostoma laticapitata 203.
 ramosum 203.
 Anthomastus 270.
 Anthopodium 270.
 Anthoptilidae 271.
 Anthothela 273.
 Anthozoa 292, 325.
 Anthropleura 347.
 granulifera 348, 350.
 antillensis, Astropecten 236.
 Cerebratulus 225, 227.
 Clibanarius 142.
 Dromidia 132.
 Eupolia 226.
 Ophioblenna 251.
 antillensis, Bunodeopsis 351.
 Antimedia duchassaingii 336.
 tuberculata 336.
 Antipatharia 324, 325.
 Antipathes tristis 287.
 Anuroplidae 168.
 Anuropus branchiatus 168.
 Aplysina 406.
 crassa 409.
 fenestrata 408.
 flagelliformis 406.
 flagelliformis var. anomala 377, 407.
 fragilis 408.
 hirsuta 409.
 Aplysiniidae 406.
 Apocremnus septemspinus 54.
 appressa, Ophiura 240, 242.
 Apsendes spinosus 164.
 Apsendidae 163, 164.
 Arabella opalina 199.
 Araña del mar 53.
 Aratus 15, 17.
 pisonii 17.
 arborecens, Amphimedon 392.
 arbuscula, Caryophyllia 298.
 Cladocora 296, 298, 354.
 Arcus americanus 97.
 gundlachi 97.
 arcuata, Hypoconcha 133.
 Arcuatus 44, 50.
 eribrarius 50.
 arenaria, Ocyropode 6.
 areola, Maandra 305.
 areolata, Madrepora 305.
 Maandrina 305.
 Manicina 291, 295, 296, 297, 305.
 Pachyhalina 392.
 areolatus, Panopeus 29.
 argus, Palinurus 98.
 Panulirus 98.
 Aricia cirrata 201.
 Aricidea alata 202.
 Ariciidae 201.
 ariminensis, Anomalina 416.
 armata, Porcellana 133.
 armatus, Alpheus 105, 108.
 Axius 96.
 Petrolisthes 133.
 Arrow Crab 53.
 arroyensis, Nereis 193.
 articularia, Eunice 196.
 articulata, Eunice 196.
 articulatus, Astropecten 238.
 aspera, Acanthogorgia 281.
 Thoe 63.
 usperrima, Echinocucumis 256, 257.
 asperula, Axhelia 291, 294.
 Madracis 294.
 Aspidochirotae 259.
 Astacus jamaicensis 123.
 Aster 379.
 Asteractis 342, 343, 344, 346.
 bradleyi 346.
 conquilega 346.
 expansa 329, 343, 345, 346, 366, 370,
 372, 373.
 foscullifera 346.
 formosa 346.
 Asterias 141.
 tenuispina 238.
 Asterina 238.
 foliata 237.
 minuta 238.
 Asteroides 236, 260, 261, 262.
 Asthenosoma hystrix 252, 253.
 Astrea astroites 309.
 barbadensis 301.
 radians 309.
 siderea 309.
 tricophylla 309.
 astreoides, Madrepora 317.
 Porites 317.
 Astrangia 298.
 astreiformis 291, 299, 300.
 danae 299.
 expansa 299.
 granulata 298, 299.
 harrisi 299.
 lineata 299.
 ludoviciana 299.
 marylandica 299.
 michelini 299.
 neglecta 298, 299.
 phyllangoides 299.
 rathbuni 299.
 solitaria 291, 298, 299.
 wilcoxensis 299.
 Astrangiidae 298, 300.
 Astrea annularis 301.
 galuxea 309.
 siderea 309.
 astreiformis, Astrangia 291, 299, 300.
 astreoides, Porites 291.
 Astrogorgia 275.
 astroides, Porites 317.
 astroites, Astrea 309.
 Madrepora 309.
 Astropecten antillensis 236.
 articulatus 238.
 duplicatus 236.
 Astrophyton 251.
 Astroporpa annulata 241, 251.
 Astroschema oligactes 241, 251.
 atlantica, Coralliocaris 122.
 atropos, Moira 255.
 Atya 118, 119, 120.
 bisulcata 120.
 scabra 119.
 Atyidae 91, 118, 120.
 Atyoida 119, 120.
 bisulcata 120.
 potimirim 120.
 Atys scaber 119.
 augustata, Calappa 86.
- Aulactinia 347.
 granulifera 348.
 stelloides 347, 352.
 aurantiaca, Cladochalina 393.
 Pachyhalina 393.
 Aureliania 364.
 Aurelianiidae 364, 365.
 auricoma, Pectinaria 206.
 auricula, Mammillifera 332.
 Zoanthus 332.
 auriculata, Eunice 196.
 Automate 104, 112.
 dolichognatha 112.
 evermanni 112.
 Axhelia 294.
 asperula 291, 294.
 decactis 295.
 mirabilis 291, 295.
 myriaster 294.
 Axilidae 91, 95.
 Axinella reticulata 400.
 Axinellidae 399.
 Axius 95.
 armatus 96.
 defensus 95, 96.
 inæqualis 95, 96.
 Axohelia mirabilis 295.
 myriaster 295.
 schrammi 295.
 bahamensis, Cancer 140.
 Petrochirus 140, 359.
 bairdii, Cycloes 85.
 Nereis 193.
 Balanidae 179, 180.
 Balanus 180.
 Barathrobius 271.
 barbadensis, Astrea 301.
 Remipes 138.
 barbata, Frevillea 9.
 Bartholomea 354.
 solifera 355, 358.
 Bathyactis symmetrica 311.
 Bathygorgia 274.
 Batrachonotus 52, 56, 57.
 brasiliensis 57.
 fragosus 57.
 Bebyrce 275.
 belgica, Pectinaria 206.
 bella, Conangia 299.
 Bellonella 270.
 bermudensis, Alpheus 107.
 Eupanopeus 28, 29.
 Nika 104.
 Panopeus 29.
 bernhardus, Pagurus 138.
 berteriana, Caryophyllia 291, 292.
 Bhawania goodii 195.
 bicarinata, Lissa 64.
 bicolor, Actinia 359, 363.
 Calliactis 359.
 bicornis, Miliolina 416.
 bicornuta, Pisa 72.
 bicornutus, Microphrys 71, 72.
 bidentata, Ophiacantha 240, 249.
 bifrons, Squilla 160.
 bifrons, Actea 33, 34.
 bilamula, Amphiura 241, 247.
 bilabiata, Lumbriconeres 199.
 bilobata, Lysidice 200.
 Biloculina bulloides 416.
 levis 416.
 bipinnata, Gorgonia 287.
 Pterogorgia 287.
 bisulcata, Atya 120.
 Atyoida 120.
 bispinosus, Cronius 51.
 Bithynia 123.
 acanthurus 123.
 jamaicensis 123.
 olfersii 123, 124.
 savignyi 123, 124.
 bituberculatus, Epiplatys 60.
 blakiana, Eucinetops 55.
 blanchardi, Hirudinaria 213, 214, 220.
 bocourti, Callinectes 47, 49.
 Boseia sinuatifrons 23.
 Brachycarpus savignyi 124.
 Brachycneminae 329, 330, 331.
 Brachyura 3, 5, 131.
 anomalia 131.
 bradleyi, Asteractis 346.

- branchiata, Polynoe 186.
 branchiatus, Anuropus 168.
 Branchiropus 166, 167.
 littoralis 166, 168.
 branneri, Glypturus 93.
 Porites 317.
 brasiliensis, Batrachonotus 57.
 Meandrina 297.
 Peneus 100.
 Pilumnus 88, 40, 41.
 brevicarpus, Alpheus sauleyi 109.
 brevicauda, Ophiura 240.
 brevis, Nididion 200.
 brevisetosa, Polynoe 186.
 brevispina, Ophiura 240, 242.
 Briareidae 272, 273.
 Briareinae 272.
 Briareum 278.
 Brissopsis 255.
 lyrifera 252, 254, 255.
 Brissus unicolor 255.
 Brittle-stars 239.
 brucei, Tedania 395.
 bucculenta, Millolina 416.
 bulloides, Biloculina 416.
 Globigerina 416.
 Bunodactidae 329, 344, 347-351, 352.
 Bunodactis 347, 351.
 Bunodella 347.
 Bunodeopsis 328.
 antillensis 351.
 Bunodes 347.
 gemmacea 347.
 teniatus 348, 350.
 thallia 349, 350.
 verrucosus 347, 354.
 Bunodidae 347.
 Bunodosoma 328, 348.
 granulifera 329, 344, 348, 350, 352,
 372, 373.
 sphaerulata 323, 329, 344, 350, 366, 372,
 373, 374.
 Buragina 23.
 burmudensis, Cymodocea 178.
 Buruquina 23.
 celata, Pericera 73.
 Pericera cornuta 73.
 Cacospongia spongeliiformis 408.
 Celoria 306.
 caespitosa, Cladocora 298.
 caletti, Agaricia 291, 311.
 Mycedium 311.
 Calappa 84.
 augustata 86.
 flammea 84.
 galloides 85.
 gallus 84, 85.
 marmorata 84.
 sulcata 84, 85.
 Calappidae 5, 84.
 Calcareia 382.
 Calcinus sulcatus 141.
 Calligorina 275.
 Callinectis 358, 359, 361, 363.
 bicolor 359.
 decorata 359.
 egeletes 359.
 miriam 361.
 polypus 359, 361.
 tricolor 329, 358, 359, 361, 372, 374.
 Callinassa 91, 92.
 grandimana 94.
 longiventris 92.
 marginata 92.
 minima 92.
 Callianassidae 91.
 Callinassida 91, 94.
 mucronata 94.
 typa 94.
 Callianassa 94.
 Callinectes 44, 47.
 bocourti 47, 49.
 danne 47, 48.
 exasperatus 47, 49.
 larvatus 48.
 marginatus 47, 48.
 ornatus 47, 48.
 sapidus acutidens 47.
 tumidus 49.
 Callipodium 270.
 Callisea 94.
 Callisys 274.
 Callistopbanus 277.
 Callozostrinae 272.
 Callozostron 275.
 Calypterinus 275.
 Calyptrophora 275.
 Calyptrophorinae 272.
 Caminus sphaeroconia 386.
 canaliculata, Processa, 104.
 Cancer acanthus 34.
 aculeatus 66.
 bahamensis 140.
 corallinus 25.
 cordatus 14.
 cornudo 73.
 coronatus 71.
 coryphe 71.
 depressa 19.
 erythropus 182.
 flammea 84.
 forceps 50.
 furcatus 73.
 gallus 85.
 gonagra 42.
 grapsus 16.
 heros 61.
 hispidus 67.
 jamaicensis 123.
 limosa 41.
 lobata 26.
 marinus chelis rubris 182.
 mirabilis 78.
 parvulus 27.
 planissimus 19.
 princeps 86.
 punctata 87.
 rumphii 87.
 sabulosa 133.
 sagittarius 63.
 scopetarius 142.
 spectabilis 23.
 Caneroidea 23.
 canel, Alpheus 105.
 Capitellidae 197, 206.
 captiva, Holothuria 256, 257.
 Cardisoma 14.
 gambum 15.
 caribaea, Palythoa 329, 331, 341, 372, 373.
 caribaeorum, Palythoa 341.
 caribaea, Micropanope 31.
 caribbaeus, Eurypanopeus 31.
 Hexapanopeus 30, 31.
 caribaea, Pectinia 296.
 cariboum, Siphonostomum 208.
 Caridea 91, 104.
 Caridina 120.
 carinata, Leptocheila 127.
 Carnosa 386.
 carolinense, Tozeuma 114.
 carolinensis, Othonia 78.
 Speocarcinus 11.
 carolinus, Palamonetes 126.
 Carpius 24.
 corallinus 25.
 carteri, Periclarus 382.
 carunculata, Hermodice 194.
 Caryophyllia 292.
 arbuscula 298.
 berteriana 291, 292.
 formosa 292.
 solitaria 298.
 Caryophyllidae 292.
 Cassis 359.
 Castalia longicirrata 185.
 mutillata 185.
 Catometopa 5, 32.
 caudata, Cilicea 172.
 cavernosa, Orbicella 300.
 cavernosus, Favites 300.
 Cavernularidae 272.
 Cenobita diogenes 139.
 Ceratosidina 272.
 Ceratosis 274.
 Cerebratulus 225, 229.
 antillensis 225, 227.
 crassus 225.
 cerebriformis, Diploria 306.
 Cereus cruekeri 368.
 lessoni 348.
 sol 350.
 Ceriantharia 324, 325, 329, 330.
 Cerianthera 323, 324.
 Cerianthidae 329.
 Cerianthus 323, 329, 331.
 americanus 329, 330.
 Ceriantipatharia 325.
 Chaetopteridae 205.
 Chalina rubens 392.
 Chalininae 390.
 Chalinopsilla pilosa 401.
 Charybdcella 44, 51.
 rubra 51.
 tumidula 51.
 Chasmodon 6, 9.
 Chasmodon 6, 9.
 cylindricus 10.
 Chela 379.
 Chelifera 163, 164.
 Chiaster 379.
 chiragra, Gonodactylus 152, 153, 160.
 Chiridota rotifera 259.
 Chironophthya 271.
 Chlacia euglochis 194.
 Chloromidae 208.
 Chlorodiella 24, 36.
 longimana 36.
 Chlorodius 36.
 americanus 27.
 dispar 25.
 floridanus 27.
 longimanus 36.
 Choanosomal 379.
 Choanosome 379.
 Chondactininae 354.
 Chondrilla nucula 386.
 Chondrosidae 386.
 Chord 379.
 Chorinus 52, 61.
 heros 61.
 Choristida 383.
 Chrotella minuta 383.
 Chrysochoria 274.
 desbonni 281.
 Chrysochorinae 272.
 Chrysopteridae 195.
 Chrysotribuloides 252.
 ciliata, Pseudosquilla 151, 153, 154, 155.
 Squilla 154.
 Cilicea caudata 172.
 cincta, Hoplophoria 342.
 cinctimanus, Mithrax 65, 70.
 cinerea, Ophiura 240, 242.
 Sesarma 18.
 cingulata, Clymene 207.
 circularis, Millolina 416.
 Cirolana mayana 166.
 obtruncata 166, 167.
 parva 166, 167.
 Cirolanidae 164, 166, 168.
 cirrata, Aricia 201.
 Clymene 207.
 Cirratulidae 204.
 Cirratulus 204.
 elongatus 204.
 melacanthus 204.
 nigromaculata 204.
 Cirripedia 179.
 Clistenides gouldii 206.
 Cladochalina aurantiaca 393.
 Cladocora 298.
 arbuscula 291, 298, 354.
 caespitosa 298.
 debilis 291, 298.
 parvistella 298.
 tripedalis 298.
 Cladome 379.
 Cladus 379.
 claperedii, Phyllocheilopterus 205.
 Clathraria 278.
 clathrata, Clathria 397.
 Hircinia 402.
 Luidia 237.
 Clathria 397.
 clathrata 397.
 jugosa 397.
 clavaria, Porites 314.
 Clavularia 270.
 riisei 278.
 Clavulina eocena 416.
 parisiensis 416.
 Cleantis planicauda 174.
 Clematissa 275.
 Clibanarius antillensis 142.

- Clibanarius formosus 142.
 sclopetarius 142.
 tricolor 142.
 clivosa, Platygrya 306.
 Clymene cingulata 207.
 cirrata 207.
 torquatus 207.
 Clymenella torquata 207.
 Clypeaster subdepressus 255.
 Clythrocerus 89, 90.
 nitida 90.
 perpusillus 90.
 Cnidaria 325.
 coarctata, Favia 303.
 celata, Pericera 73.
 Stenocionops furcata 73.
 Cœlogorgia 270.
 coeloptychioides, Margaritella 382.
 Cœloria 305.
 forskuellana 305
 labyrinthiformis 305.
 Cenangia bella 299.
 collegniana, Porites 317.
 Collenchyma 379.
 Collodes 52, 55, 56, 57.
 inermis 56.
 levis 56.
 Comatulæ 235.
 communis, Pseuderichthys 156.
 Pseudosquilla 156.
 complanata, Eurythoe 194.
 Syllis 183.
 concava, Cryptopodia 82.
 concavum, Macrocoeloma 73, 75.
 Conchodytes 122.
 conferta, Favia 304.
 confertus, Paracalythos 292.
 conglomeratus, Porites 317.
 Conocyathus 312.
 conquilega, Astartis 346.
 constrictus, Parapenæus 101.
 Penæus 101.
 Conulus 379.
 Coppatis solidissima 387.
 Coppatidæ 387.
 Corallana tricornis 169.
 Corallanidæ 164, 169.
 Corallidæ 272, 274.
 coralligenes, Hoplophoria 342.
 Lebrunia 325.
 corallinus, Cancer 25.
 Carpillus 25.
 Coralliocharis 120, 122.
 atlantica 122.
 Corallium 274.
 poris stellatis 314.
 cordatus, Cancer 14.
 Ucides 14.
 cornudo, Cancer 73.
 Pericera 73.
 Cornularia 270.
 Cornulariæ 269.
 Cornulariella 270.
 Cornulariæ 270.
 cornuta, Pericera 73, 360, 363.
 coronatus, Cancer 71.
 Mithrax 71.
 Mithrax 71.
 Cortex 379.
 Corynactis 328.
 coryphe, Cancer 71.
 Mithrax 65, 71.
 Cosmoporites laevigata 317.
 costata, Cyphastrea 301, 302.
 couchii, Nika 104.
 Crabs 5.
 Arrow 53.
 Fiddler 6.
 Fresh-water 23.
 Ghost 6.
 Land 13, 16.
 Mangrove 15, 17.
 Mud 28.
 Oyster 20.
 Sand 6.
 True 3.
 Cradactis 342.
 crassa, Aplysina 409.
 Dendrospongia 409.
 Eunicea 283.
 crassa, Gorgonia 285.
 Meandrina 306.
 Plexaura 285.
 crassibranchiatus, Thelepus 206.
 crassicornis, Urticina 358.
 crassispina, Echinaster 238.
 crassus, Cerebratulus 225.
 Drepanophorus 225.
 crenulata, Siderastrea 309.
 cribrarius, Arenæus 50.
 Portunus 50.
 Cribrina 347.
 crinita, Notopygos 194.
 Crinoidea 235.
 crispa, "Diaseris" 291.
 crispata, Manicina 305.
 Cristellaria cultrata 416.
 gibba 416.
 crutulifrons, Alpheus 105, 106.
 cristulipes, Hemus 63.
 Cronius bispinosus 51.
 ruber 51.
 crucifer, Cereus 368.
 Phymanthus 329, 368, 370, 372.
 crucifera, Actinia 368.
 Epicystis 368, 370.
 crumentate, Goniopsis 15.
 crumentatus, Grapsus 15.
 crustata, Solanderia 280.
 Cryptopodia 79, 82.
 concava 82.
 granulata 83.
 Cryptosoma 85.
 Crystallophanes 270.
 Ctenocella 277.
 Ctenophyllia 295.
 meandrites 296.
 profunda 296, 297.
 quadrata 296.
 cubensis, Epilobocera 23
 Hippra 138.
 Pagurus 142.
 Remipes 138.
 cucullata, Mycedia 310.
 Madrepora 310.
 cucullatum, Mycedium 310.
 Cucumaria 260.
 punctata 259.
 culebra, Eunice 197.
 culebra, Philoscia 176.
 cultrata, Cristellaria 416.
 curaçoense, Sesarma 18.
 curtum, Tæniosoma 226.
 cuspidata, Hirenia 377.
 Cyathoceras portoricensis 291, 293.
 Cyathopodium 270.
 Cyclodorippe granulata 90.
 nitida 90.
 plana 90.
 Cycloë 84, 85.
 bairdii 85.
 Cyclograpsus 15, 18.
 integer 18.
 Cyclois bairdii 85.
 Cyclometopa 5, 23.
 Cyclorhynchus 113.
 Cycloxanthops 24, 27.
 denticulatus 27.
 Cycloxanthus 27.
 cylindricus, Chasmocarcinus 10.
 cylindrus, Dendrogyra 306.
 Cymodocea burmudensis 173.
 Cymopollia 12.
 sica 13.
 Cymothoidæ 164, 172.
 Cyphastrea costata 301, 302.
 oblita 301.
 Cystiactis eugenia 350, 351.
 tuberculosa 351.
 danae, Astrangia 299.
 Callinectes 47, 48.
 Pectinia 297.
 danei, Manicina 305.
 Danielsenia 277.
 Dasybranchus lunulatus 206.
 rectus 207.
 umbrinus 206.
 Dasychone ponce 209.
 Dasygorgia 274.
 Dasygorgidæ 272, 274.
 dasypodus, Pilumnus 38, 40.
 debilis, Acanthonyx 60.
 Cladocora 291, 298.
 decaetis, Axhelia 295.
 deceemspinus, Solenolambrus 81, 82.
 decora, Macrobdella 214.
 decorata, Calliactis 359.
 decorus, Pentacrinus 235.
 dedalea, Meandrina 306.
 defensus, Axius 95, 96.
 de filippii, Paracalythos 291, 292.
 delineata, Eupollia 226.
 Pollia 226.
 Tæniosoma 226.
 delineatum, Tæniosoma 225, 226.
 Deltocalythos italicus 291, 293.
 Demospongia 383.
 Dendrochirotæ 259.
 Dendrogyra cylindrus 306.
 Dendromellidæ 342.
 Dendrospongia crassa 409.
 densipedes, Holothuria 256, 257.
 denticulata, Eunice 196.
 denticulatus, Cycloxanthops 27.
 Xantho 27.
 dentipes, Alpheus 105.
 depressa, Cancer 19.
 Panoplax 12.
 Plagusia 19.
 depressifrons, Achelous 44, 45.
 Portunus, 44, 45.
 depressus, Mithrax 65, 68.
 Paguristes 132, 143, 144.
 Dermal membrane 379.
 desbonni, Chrysogorgia 281.
 Desma 379.
 Desmacidonidæ 396.
 Dentocladus 379.
 diacantha, Lupa 48, 49.
 Pericera 74.
 diacanthum, Macrocoeloma 73, 74.
 Diactinal 379.
 Diadema setosum 252, 253.
 "Diaseris" crispa 291.
 Dichococenia 301.
 porcata 303.
 stokesi 303.
 dichotoma, Gorgonia 285.
 Plexaurella 285.
 Dichotriane 379.
 diffusa, Ocellina 291, 294.
 digitata, Reniera 395.
 diguetti, Paguristes 145.
 dilatus, Epialtus 60.
 diogenes, Cenobita 139.
 Pagurus 139.
 Diopatra 198.
 diplacantha, Pericera 74.
 diplacanthum, Macrocoeloma 73, 74.
 Diplactis 342.
 Diplodella antellarum 219.
 Diploria 306.
 cerebriformis 306.
 labyrinthiformis 295.
 dipsacea, Isophyllia 326.
 Diptychus unciifer 148.
 discolor, Tæniosoma 225, 226.
 Discosoma 364.
 an mone 365, 366.
 heliathanus 365, 366.
 nummiforme 364.
 Discosomidæ 364.
 dispar, Chlorodius 25.
 Leptodius 25.
 Liomeria 25.
 Ophiactis 246.
 Dissodactylus 20, 21, 22.
 encopel 22.
 mellitæ 22.
 nitidus 22.
 disticha, Pectinia 297.
 distinguendus, Pseuderichthys 156.
 dolleognatha, Automate 112.
 Domecia 24, 43.
 hispidia 43.
 domestica, Pontonia 122.
 Dorippidæ 5, 89.
 Dorocidaris papillata 252.
 dorsalis, Lithotrya 179.
 Sicyonia 103.

- Drepanophorus crassus 225.
 Drifa 271.
 Drino 126.
 Dromia 132, 133.
 cylthrops 132.
 lator 132.
 Dromias 131.
 Dromidia antillensis 132.
 dubia, Globigerina 416.
 Ophionereis 240, 248.
 duchassaingii, Antimedia 336.
 Isaurus 329, 336, 372, 373.
 duerdeni, Homostichanthus 365, 367.
 duplex, Orbitolites 416.
 duplicatus, Astropecten 236.
 Duva 271.
 Dynamene nodulosa 173.
 perforata 173.
 Dysactis annulata 355.
 Ebala 86, 87.
 stimpsonii 87.
 eburneum elegans, Ophiomusium 240.
 Ecactine 379.
 ecarinata, Aega 171.
 Echinanthus rosaceus 252, 254.
 Echinaster crassispina 238.
 spinosa 238.
 echinata, Ophiocoma 240, 245, 263.
 Echinocucumis asperrima 256, 257.
 Echinogorgia 275.
 Echinoldea 252, 260, 261, 262, 263.
 Echinometra subangularis 252, 253, 263.
 viridis 252, 253.
 Echinomuricea 275.
 Echinoneus semilunaris 255.
 Echinophilus 21, 22.
 mellitae 22.
 Echinopora franki 301, 302.
 Ectosome 379.
 Ectyonina 396.
 edulis, Nika 104.
 Edwardsiae 324.
 egletes, Adamsia 359.
 Calliactis 359.
 Elasmogorgia 275.
 elegans, Actinoporus 364.
 Ophiolopsis 240, 242.
 Ophiomusium eburneum 243.
 Pectina 269, 297.
 Protulides 209.
 elephantotus, Agaricia 291, 310.
 Madrepora 310.
 Mycedium 310.
 elevatus, Spelaeophorus 88.
 Ellisella 277.
 elongata, Hippolyte 118.
 Xiphocaris 118.
 elongatus, Cirratulus 204.
 emarginata, Encope 22, 255.
 emarginatus, Acanthonyx 60.
 Emerita 138, 139.
 talpoida 138.
 emerita, Hippa 138.
 empusa, Squilla 160.
 Encope emarginata 22, 255.
 michelini 255.
 encopei, Dissodactylus 22.
 Engydomaria 76.
 ensiferus, Hippolyte 114.
 Latreutes 114.
 Epialtus 52, 59.
 bituberculatus 60.
 dilatus 60.
 longirostris 60.
 minimus 60.
 sulcirostris 60.
 Epiactis crucifera 368, 370.
 osculifera 368.
 Epigonactis 347.
 Epilobocera cubensis 23.
 sinuatifrons 23.
 Epizoanthus 331.
 Eriochthys 154.
 Eriphia 24, 42.
 gonagra 42.
 Erythropodium 270.
 erythropus, Cancer 132.
 Dromia 132.
 Esactine 379.
 esculenta, Hippocod 252, 254.
 espinosus, Apsodes 164.
 Ethusa americana 88.
 masearoni americana 89.
 Euaster 379.
 Eucerninus praelongus 138.
 Euchalinopsis rubens 392.
 Eucinetops 62, 55.
 blakiana 55.
 Eucratodes 24, 35.
 agassizii 35, 36.
 Eucratoplax spinidentata 11.
 Eucratopsis 6, 11.
 spinidentata 11.
 eugenia, Cystiactis 350, 351.
 euglochis, Chlocea 194.
 Eugorgia 277.
 Eulalia quinquelineata 192.
 Eulepis 189.
 fimbriata 190.
 haemifera 189.
 splendida 189, 190.
 Eumadrepora 312.
 Eumuricea 275.
 Eunephrops 98.
 Eunephthya 271.
 Eunice 195, 198.
 articulata 196.
 articulata 196.
 auriculata 196.
 culebra 197.
 denticulata 196.
 fucata 196.
 ornata 195.
 rubra 197.
 siciliensis 196.
 violacea-maculata 196.
 Eunicea 276, 287.
 crassa 283.
 furcata 284.
 laxispina 283.
 lugubris 283.
 mammosa 283.
 multicauda 285.
 rousseaui 283.
 turgida 283.
 Eunicella 276.
 Eunicidae 195.
 Eupanopeus 24, 28, 30, 41.
 americanus 28, 29.
 bermudensis 28, 29.
 hartii 28, 29.
 herbstii 28, 29.
 occidentalis 28, 29.
 Euphrosyne triloba 194.
 Euplexaura 276.
 Eupolia antillensis 226.
 delineata 226.
 Eupomatus parvus 210.
 uncinatus 210.
 Euprognatha 52, 57, 58.
 gracllipes 58.
 rastellifera 58.
 rastellifera spinosa 58.
 Eurydice 167, 168.
 Eurypanopeus 24, 30, 35, 41.
 abbreviatus 30.
 carribbaeus 31.
 parvulus 30.
 Euryplax 6, 8.
 nitida 8.
 Eurythoe complanata 194.
 Eurytium 24, 41.
 limosum 41.
 Eusmilidae 295, 300.
 Euspongia officinalis 402.
 eutheca, Macrocoloma 75.
 Evactis 347.
 evermanni, Automate 112.
 Munida 146.
 exasperata, Lupen 49.
 exasperatus, Callinectes 47, 49.
 exotica, Ligia 175.
 expansa, Asteractis 329, 343, 345, 346,
 366, 370, 372, 373.
 Astrangia 299.
 Explanaria ananus 303.
 Fallacia proctochona 184.
 fasciatus, Hepatus 86.
 fasciculata, Oulactis 346.
 fasciolaria tulipa 359.
 fasciolatum, Gnathophyllum 126.
 austinus, Palamon 124.
 faveolata, Madrepora 301.
 Favia 301, 302, 303.
 ananas 303.
 concolorata 303.
 conferta 304.
 fragum 291, 303, 326.
 gravida 304.
 incerta 303.
 leptophylla 304.
 uva 303.
 Favia 300.
 Favites 301, 302.
 cavernosus 300.
 favites, Madrepora 300.
 favosa, Madrepora 301.
 fenestrata, Aplysina 408.
 Spongia 408.
 fibrosa, Ancorina 385.
 Pilochrota 377, 385.
 Fiddler Crab 6.
 Filament 379.
 filigrana, Meandrina 306.
 fimbriata, Aminotrypane 207.
 Eulepis 190.
 fissurus, Parapeneus 102.
 Flabellifera 164, 166.
 flabellum, Gorgonia 287.
 Rhipidogorgia 287.
 flaccida, Ophiomyxa 241, 251.
 flagelliformis, Aplysina 377, 406, 407.
 Hircinia 406.
 flammae, Calappa 84.
 Cancer 84.
 flexuosa, Amphipura 241, 247.
 Lissogorgia 283.
 Muricea 283.
 Plexaura 284.
 florida, Ricordea 363.
 floridana, Leptogorgia 286.
 Lumbriconereis 198.
 Phyllangia 299.
 floridanus, Alpheus 105, 107.
 Chlorodius 27.
 Leptodius 27.
 Pillumnus 38, 40.
 Thor 116.
 flosculifera, Actinactis 346.
 Actinia 346.
 Asteractis 346.
 Oulactis 346.
 flos-marinus, Zoanthus 332, 333.
 foetida, Hircinia 377, 406.
 foetidus, Sarcotrogus 406.
 foliolina peltata 390.
 foliosa, Oulactis 346.
 folium, Asterina 237.
 forceps, Cancer 60.
 Lupa 50.
 Lupella 50.
 Mithraculus 70.
 Mithrax 65, 70.
 Palemone 123.
 formosa, Asteractis 346.
 Caryophyllia 292.
 formosus, Alpheus 105, 106.
 Clibanarius 142.
 forskelana, Coeloria 305.
 fragilis, Aplysina 408.
 Leptoria 306, 308.
 Mycedia 310.
 Spongia 410.
 fragosus, Batrachonotus 57.
 fragum, Favia 291, 303, 326.
 Madrepora 303.
 Parastreia 303.
 franki, Echinopora 301, 302.
 Fresh-water Crabs 23.
 Frevillea barbata 9.
 quadridentata 9.
 fugax, Anasimus 59.
 fulgens, Zoroaster 237.
 Fulla 271.
 fulva, Amphipsila 245.
 Ophiopsila 241, 245.
 Fungia symmetrica 311.
 Funiculinidae 271.
 furcata, Eunicea 284.
 Eunice 196.
 Stenoclonops 73.
 furcatus, Cancer 73.
 fusca, Gemmaria 339.

- galaxea, *Astrea* 309.
Siderastrea 309.
Siderina 309.
galloides, *Calappa* 85.
gallus, *Calappa* 84, 85.
Cancer 85.
Gecarcinidae 5, 13, 14.
Gecarcinus lateralis 14.
Gelasimus 6.
mordax 7.
rapax 7.
vocator 6.
gemmacea, *Bunodes* 347.
Gemmaria 331, 338.
fusca 339.
swiftii 331.
variabilis 331, 338.
gemmatus, *Pilumnus* 38, 39.
Geodiidae 386.
Geograpsus 15, 16.
lividus 16.
Gersemia 271.
Gersemopsis 271.
gibba, *Cristellaria* 416.
gibbesii, *Albunea* 139.
gigas, *Strombus* 140.
Ghost Crab 6.
glaberima, *Holothuria* 256, 258.
glabra, *Ophialcea* 241, 249.
Pisosoma 135.
Stylaroides 208.
glabrous, *Gonodactylus* 153.
Globigerina bulloides 416.
dubia 416.
sacculifera 416.
Globigerinidae 416.
globosa, *Siderastrea* 309.
globulariformis, *Pilecarota* 377, 385.
globulifera, *Viatix* 351.
Glycera abrauchiata 200.
tesselata 201.
Glyceridae 200.
Glyptoplax 24, 32.
pusilla 33.
Glypturus 91, 93.
acanthochirus 93, 94.
branneri 93.
grandimanus 94.
Gnathophyllidae 91, 126.
Gnathophyllinae 126.
Gnathophyllum americanum 126.
fasciolatum 126.
pallidum 126.
zebra 126.
goesii, *Amphipholis* 241, 247.
Ophiothyreus 240, 243.
gonagra, Cancer 42.
Eriphia 42.
Gonerichthys 151.
Goniada gracilis 201.
oculata 201.
Goniastrea 301, 302.
Goniopsis ercentata 15.
Gonodactylus 151.
chiragra 152, 153, 160.
glabrous 153.
cøstedtii 151, 152, 153, 155.
spinosissimus 153.
spinosa 153.
goodii, *Bhawanla* 195.
Gorgonacea 272.
Gorgonella 277.
Gorgonellidae 273, 277.
Gorgonia 277, 287.
acerosa 287.
anguiculus 284.
bipinnata 287.
crassa 285.
dichotoma 285.
flabellum 287.
heteropora 285.
homomalla 285.
laxispica 283.
multicauda 285.
papillosa 283.
porosa 285.
Gorgonidae 273, 277.
Gorgonocephalus 251.
gouldii, *Cistenides* 206.
Pectinaria 206.
gracilipes, *Euprognatha* 58.
gracilis, *Goniada* 201.
Ligia 175.
Metopograpsus 17.
Nereis 193.
Pachygrapsus 17.
gracillima, *Amphipholis* 251.
gramen, *Textularia* 416.
grandimana, *Callianassa* 94.
grandimanus, *Glypturus* 94.
grandis, *Siderastrea* 309.
granulata, *Astrangia* 298, 299.
Cryptopodia 83.
Cyclodorippe 90.
Heterocrypta 83.
granulatus, *Pagurus* 140.
Petrochirus, 140.
granulifera, *Actinia* 347, 348, 368.
Anthropocura 348, 350.
Aulactinia 348.
Bunodes 348.
Bunodosoma 329, 344, 348, 350, 351.
352, 372, 373.
Oulactis 348.
granuliferum, *Megalobrachium* 136.
granulosa, *Hirudo* 213.
Grapsidae 5, 15.
Grapsoida 5.
grapsus, Cancer 16.
Grapsus cruentatus 15, 16.
lividus 16.
transversus 17.
grata, *Spiroculina* 416.
gravida, *Favia* 304.
grayi, *Paguristes* 146.
Pontonia 122.
greeleyi, *Pisosoma* 135.
grisea, *Holothuria* 256, 258.
greenlandica, *Pectinaria* 206.
grubei, *Sthenelais* 187.
guadalupensis, *Porites* 317.
guanhumii, *Cardisoma* 15.
guerini, *Pinnateres* 20.
Pinnotheres 20.
guldinii, *Linckia* 237.
Ophidiaster 237.
gundlachi, *Aretus* 97.
Seyllarus 97.
gundlachii, *Porcellana* 133.
guttata, *Ophiura* 251.
Gynosarca 270.
gyrosa, *Matrepora* 295.
Hadromerina 387.
Hæmea 270.
hæmifera, *Eulepis* 189.
Hæmopsis 220, 313.
hagenii, *Antedon* 235.
Halmeldæ 269, 270.
Halcampæe 324.
Hallechondrina 389.
hallichondrioides, *Petrosia* 389.
Harmothoe polytricha 136.
harrisi, *Astrangia* 299.
Hartea 270.
hartii, *Eupanopeus* 28, 29.
Panopeus 29.
Xiphopenus 102.
hebes, *Leptogorgia* 286.
Helianthopsis 364.
helianthus, *Actinia* 365, 366.
Discosoma 365, 366.
Stoichactis 329, 365, 366, 367, 368, 370.
Heliastræa 300.
acropora 301.
abdita 302.
annularis 301.
lamareki 301.
rotulosa 302.
Heliopora 271.
Helioporidae 269, 271.
hemphilli, *Mithrax* 65, 69.
hemphilli, *Hexapanopeus* 30, 31.
Panopeus 31.
Hemus 52, 62.
cristulipes 63.
henshawi, *Ortmannia* 120.
Hepatus fasciatus 86.
princeps 86.
herbstii, *Eupanopeus* 28, 29.
Panopeus 28.
Hermella varians 210.
Hermellidae 210.
Hermodice carunculata 194.
Herophila 274.
heros, Cancer 61.
Chorinus 61.
Hesione pratexta 184.
protochona 184.
vittigera 184.
Hesionidae 184.
Heteractis lucida 355, 357.
Heteranthidae 364.
heterochælis, *Aipheus* 105, 107.
Heterococlea 382.
Heterocrypta 79, 83.
granulata 83.
lapidea 83.
Heterodactylinae 329, 363, 364, 368.
Heterogorgia 275.
heterogyra, *Meandritia* 306.
Heteropora 312.
Gorgonia 285.
Plexaura 285.
Heterorrhaphidae 395.
Hexactinaria 325.
Hexactinellida 382.
Hexactininae 323, 324, 325, 363.
Hexapanopeus 24, 30.
caribbeanus 30, 31.
hemphilli 30, 31.
quinquedentatus 30, 31.
hieroglyphica, *Leptoria* 306.
Hiliana 277.
Hippa 138, 139.
Hippidae 139.
Hippolite elongata 118.
ensiferus 114.
macrocheles 105.
Hippolysmata 113, 115.
intermedia 115, 116.
moorei 115.
Hippolytidae 91, 113.
Hipponoe esculenta 252, 254.
Hippospongia intestinalis 402.
Hircinia 378, 404.
acuta 404.
clathrata 402.
flagelliformis 406.
fetida 406.
fetida var. *cuspidata* 377.
variabilis 405.
Hirudo granulosa 213.
javanica 213.
medicinalis 220.
hirsuta, *Aleirona* 169, 170.
Aplysia 409.
Ophiopristis 240, 250.
Verongia 409.
hirsutipes, *Mithraculus* 70.
hirta, *Paramuricea* 281, 282.
Hirudinaria blanchardi 213, 214, 220.
javanica 213, 214, 215.
Hirudinidae 219, 221.
hispida, *Domecia* 43.
Manicina 305.
hispidus, Cancer 67.
Mithrax 65, 67, 68.
Palæmon 99.
Stenopus 99.
Holaxonia 272.
holderi, *Mithrax* 65, 69.
Holometopus ricordi 18.
Holopus 235.
holosericus, *Pilumnus* 38, 39.
Holothuria captiva 256, 257.
densipedes 256, 257.
glaberrima 256, 258.
grisea 256, 258.
impatiens 256, 258.
mexicana 256, 258.
rathbuni 256, 259.
surinamensis 256, 259.
Holothurians 256.
Holothuroidea 256, 261, 263.
Homaridae 91, 98.
Homarus 98.
Homodactylinae 329, 363, 364.
homomalla, *Gorgonia* 285.
homomalla, *Plexaura* 285.
homoraphis, *Pericharax* 382.
Homoriscus portoricensis 28.
Homorrhaphidae 389.
Homostichanthidae 365.

Homostichanthus 364.
 anemone 365, 366, 367.
 dnerdeni 365, 366, 367.
 Hoplophoria cincta 342.
 coralligena 342.
 hyades, Orbicella 302.
 Solenastrea 302.
 Hyas aculeata 77.
 Hydrocorallinae 318.
 Hydrozoa 318, 325.
 Hymenogorgia 277.
 Hypnogorgia 275.
 Hypoconcha arcuata 133.
 sabulosa 133.
 hystrix, Amathia 62.
 Anamathia 62.
 Asthenosoma 252, 253.
 Palaopneustes 252, 254.
 Seyramathia 62.
 Ictlogorgia 273.
 Idoteidae 164, 174.
 impatiens, Holothuria 256, 258.
 impressa, Ophiozona 240, 243.
 Inachoides 52, 59.
 intermedius 59.
 inaequalis, Axius 95, 96.
 incerta, Favia 303.
 Leptocheila 165.
 Porites 317.
 incertus, Ammodiscus 416.
 inermis, Collodes 56.
 insignis, Pagurias 141.
 Vertebrulina 416.
 integer, Cyclograpsus 18.
 intermedia, Hippolymanata 115, 116.
 Squilla 151, 159, 160.
 intermedius, Inachoides 59.
 intestinalis, Hippospongia 402.
 Spongia 402.
 intrinsecus, Alpheus 109.
 investigatoris, Parapeneus 102.
 Iridogorgia 274.
 irregularis, Spongia 410.
 isacanthum, Ophiostigma 240, 249.
 Isaurus 331, 336.
 Quichassaingi 329, 336, 372, 373.
 Isea 94.
 Isida 274.
 Isidella 274.
 Isidina 272.
 Isis 274.
 Isoactinote 379.
 Isocheila 380.
 Isophyllia dipsacea 326.
 Isophyllia 302.
 Isopora muricata 291, 312, 313.
 Isoporidae 312.
 italiens, Deltoceyathus 291, 293.
 jamaicensis, Astacus 123.
 Bithynis 123.
 Cancer 123.
 Palemon 123.
 javanica, Hirudinaria 213, 214, 215.
 Hirudo 213.
 Jousseaumea 104, 111.
 trigona 111.
 jugosa, Clathria 397.
 Jugosus, Petrolisthes 134.
 Juncella 277.
 Keratosa 401.
 Keroides 273.
 Kophobolemon 281.
 Kophobolemonidae 271.
 kroyeri, Penaeus 102.
 Xiphonopsis 102.
 labrosa, Madrepora 312.
 labyrinthica, Madrepora 296, 306.
 Meandrina 306.
 Meandrina 308.
 labyrinthiformis, Celeria 305.
 Diploia 285.
 Meandrina 296.
 Meandrina 306, 308.
 lacteus, Ptilanus 40.
 lactuca, Madrepora 295.
 laevigata, Cosmoporites 317.
 Sicyonia 103.
 laevimanus, longicarpus, Synalpheus 109, 110.
 Mithrax 65, 67.
 parvif, Synalpheus 109.

lavis, Biloculina 416.
 Lagenidae 416.
 Lagostoma reticulata 37.
 lamareki, Heliastrea 301.
 Lambrus 79, 82.
 agonus 79.
 serratus 80.
 lamellosa, Madrepora 296.
 Land crabs 13, 16.
 Lanocina 169.
 lapidea, Heterocrypta 83.
 lappa, Synapta 256, 259.
 larvatus, Callinectes 48.
 latcapitata, Anthostoma 208.
 lateralis, Geacarcinus 14.
 Ocyropa 14.
 latecauda, Anilocra 172.
 later, Dromia 132.
 Latreutes 113, 114.
 ensiferus 114.
 laxispica, Gorgonia 283.
 laxispina, Eunicea 283.
 Leander paulensis 125.
 Lebrunia 342.
 coralligena 326.
 Leiolumbrus 79, 80.
 nitidus 80.
 punctatissimus 81.
 Leiolophus planissimus 19.
 Lepadidae 179.
 Lepidisis 274.
 Lepidocyathus 312.
 Lepidogorgia 274.
 Leptocheila carinata 127.
 serratorifolia 113, 127.
 Leptocheila incerta 165.
 savignii 106.
 leptodaetyla, Uca 6, 7.
 Leptodius 24, 26.
 americanus 27.
 dispar 25.
 floridanus 27.
 Leptogorgia 277, 286.
 floridana 286.
 hebes 286.
 solitaria 285.
 virgulata 287.
 leptophylla, Favia 304.
 Leptopisa 52, 75.
 scitrostris 75.
 Leptopodia sagittaria 53.
 Leptoria 302, 306.
 fragilis 306, 308.
 hieroglyphica 306.
 phrygia 306.
 lessoni, Cereus 348.
 Urticina 348, 350.
 lessoni, Amphistegina 416.
 Leucoella 279.
 Leuconidae (Leucones) 382.
 leucopsis, Micrura 225, 227.
 Leucosidae 5, 86.
 Leucosoides 84.
 levis, Collodes 56.
 herminieri, Othonia 77, 78.
 Pitho 77, 78.
 Ligia exotica 175.
 gracilis 175.
 olfersii 175.
 Ligidae 164, 175.
 limbata, Amphipholia 241, 247.
 Phyllocenia 301, 302.
 Limnatis nilotica 213.
 limosa, Cancer 41.
 limosum, Eurytium 41.
 limosus, Panopeus 41.
 Linckia 238.
 guiltingii, 237.
 lineata, Astrangia 299.
 Lincus 225, 229.
 albocinctus 225, 228.
 albonasus 227.
 linneana, Miliothia 416.
 Liomera 24, 25.
 dispar 25.
 longimana 25.
 Lissa 52, 64.
 bicarinata 64.
 Lissogorgia flexuosa 283.
 Lissula 64.
 Lithadia 86, 88.

Lithadia pontifera 88.
 Lithodidae 131.
 Lithophyllia 302.
 Lithotrya dorsalis 179.
 littoralis, Branchiopus 166, 168.
 Neoporites 317.
 Lituariidae 272.
 Lituoliidae 416.
 lividus, Geograpsus 16.
 Grapsus 16.
 Livona pica 139.
 Jungmani, Ophioglypha 240, 243.
 lobata, Cancer 26.
 Lophactea 26.
 Phakellia 399.
 lobifrons, Micropanope 32.
 Lobophytum 270.
 Lobularia 270.
 loligo, Phymanthus 368.
 longibrachia, Ophiactis 240, 246.
 longicarpus, Synalpheus laevimanus 109, 110.
 (var.), Alpheus sauleyi 110.
 longicauda, Pandalus 117.
 longicaudata, Urocaris 126.
 longicirrata, Castalia 185.
 longimana, Chlorodiella 36.
 Liomera 25.
 longimanus, Chloridius 36.
 longipes, Munida 147.
 longirostris, Epiplatys 50.
 longiventris, Callinassa 92.
 Lophactea lobata 26.
 Lophogorgia 277.
 Lophophyllum proliferum 331.
 Loricata 91, 97.
 loricata, Ophiactis 240, 246.
 lucida, Heteractis 355, 357.
 ludoviciana, Astrangia 299.
 Luffaria nuciformis 407.
 lugubris, Eunicea 283.
 Luidia alternata 286.
 clathrata 237.
 senegulensis 237.
 Lumbriconereis 198.
 lufabata 199.
 floridana 198.
 maculata 198, 199.
 opalina 199.
 parva-pedata 198.
 splendida 199.
 lunulatus, Dasybranchus 206.
 Lupa 44, 49.
 diacantha 48, 49.
 forceps 50.
 nia 44.
 Lupea exasperata 49.
 seba 46.
 Lupella 44, 49.
 forceps 50.
 luxuriosa, Sthenelais 188.
 lymani, Paguristes 145.
 lycurium, Tetliya 383.
 lyriera, Brissopsis 252, 254, 255.
 Lysidice bilobata 200.
 notata 200.
 sulcata 200.
 Lysioerichthys 156.
 Lysioquilla 156.
 malinacensis 151, 157, 158, 159.
 plumata 151, 156, 157.
 tricarinata 157.
 Lysmatidae 91, 104.
 Macrobdella decora 214.
 macrobrachion, Palemon 123.
 macrocheles, Alpheus 105, 106.
 Hippolyte 105.
 Polyonyx 138.
 Porcellana 138.
 Macrocnemina 330.
 Macrocnema 52, 73.
 concavum 73, 75.
 Macrocnema diacanthum 73, 74.
 diplacanthum 73, 74.
 cutacea 75.
 subparallelum 73, 74.
 tenuirostris 75.
 trispinosum 73, 74.
 macrodera, Padochele 53.
 Macrura 3, 91, 131.
 anomalia 131.

- maculata*, *Amphipsila* 245.
Lumbriconereis 198, 199.
Madracis asperula 294.
Madrepora acropora 301.
ananas 303.
annularis 301.
areolata 305.
astroides 317.
astroites 309.
cucullata 310.
elephantotus 310.
luciolata 301.
lavites 300.
favosa 301.
fragum 303.
labrosa 312.
labyrinthica 296, 306.
lactuca 295.
meandrites 295, 296, 305, 306, 307.
porites 314.
radians 309.
securis 312.
siderca 309.
sinuosa 307.
undata 310.
Madrepora anomala 312.
Madreporaria 325, 327.
Madreporidae 312.
Meandrina 295, 305.
areola 305.
labyrinthica 306.
labyrinthiformis 296.
Meandrina areolata 305.
filograna 306.
labyrinthica 308.
labyrinthiformis 306, 308.
sinuosissima 308.
strigosa 308.
superficialis 308.
Meandrinidae 302.
meandrites, *Madrepora* 295, 296, 305, 306, 307.
Pectinia 291, 297.
Meandrina 291, 297.
Pectinia 296.
Meandrospongiae 382.
magna-oculata, *Phyllococe* 191.
Maia sculpta 71.
spinosissima 66.
malingsensis, *Lysiosquilla* 151, 157, 158, 159.
Malidae 5, 52.
Main or primary fiber 380.
Maioides 52.
Maldanidae 207.
Mammillifera auricula 332.
nymphaea 332.
pulehella 332.
mammillosa, *Polythoa* 331, 341.
mammosa, *Eumicea* 283.
Mangrove crab 15, 17.
manica, *Manicina* 305.
Mantella 302, 305.
areolata 291, 295, 296, 297, 305.
crispata 305.
danae 305.
hispidia 305.
manica 305.
pachyphylla 296.
plicocnica 305.
praerupta 305.
valenciennesi 305.
Margaritella ecleptychioides 382.
marginalis, *Orbitolites* 416.
marginata, *Callianassa* 92.
marginatus, *Callinectes* 47, 48.
Neptunus 48.
Petrolisthes 134.
marina, *Thalassia* 351.
marinus chelis rubris, *Cancer* 132.
marmorata, *Calappa* 84.
marshi, *Pagurus* 139.
Pilumnus 83, 41.
marylandica, *Astrangia* 299.
mascaroni americana, *Ethusa* 89.
Matopora meandrites 295.
Matutidae 5, 86.
mayana, *Cirolana* 166.
Cirolanidae 166.
Meandrina 295, 302, 305.
brasilienis 297.
crassa 306.
Meandrina dedalea 306.
heterogyra 306.
labyrinthica 306.
lamellosa 296.
meandrites 291, 297.
pectinata 295, 296.
serrata 306.
sinuosa 306.
sinuosissima 306.
strigosa 306.
meandrites, *Ctenophyllia* 296.
medicinalis, *Hirudo* 220.
megachelcs, *Alpheus* 105.
Megalobrachium granuliferum 136.
poeysi 136.
megalops, *Parapenaeus* 101, 102.
Megascclere 380.
megaspina, *Muricea* 282.
melacanthus, *Cirratalus* 204.
melanostigma, *Sabella* 208.
Melitodes 273.
Melitodidae 272, 273.
Mellita sexforis 252, 254.
testudinata 252, 254.
mellite, *Dissodactylus* 22.
Echinophilus 22.
meionena, *Pyrula* 359.
Melybia 21, 42.
thalamita 43.
Menacella 275.
menardi, *Pulvinulina* 416.
Menella 275.
Menippe 24, 36.
nodifrons 37.
rumphii 37.
Meoma ventricosa 255.
meridionalis, *Actinometra* 235.
Metalia pectoralis 255.
Metopogapsus gracilis 17.
Metopora gyrosa 295.
Metricridae 329, 354, 358, 359.
Metricridium 358.
mexicana, *Holothuria* 256, 258.
Pontonia 122.
micellini, *Astrangia* 299.
Encope 255.
Porites 317.
microcarunculata, *Amphinome* 194.
Microciona spinosa 396.
Micropanope 24, 32.
caribbaea 31.
lobifrons 32.
pusilla 33.
xanthiformis 32.
Microphrys 52, 71.
bicornutus 71, 72.
platysoma 71, 72.
Microrynchus 76.
Microscclere 380.
Mierura leucopsis 227.
Microxen 380.
Mierura 225, 229.
leucopsis 225.
Milfolidae 416.
Milfolia angularis 416.
bicornis 416.
bucculenta 416.
circularis 416.
linnaeana 416.
reticulata 416.
seminulum 416.
tricarinata 416.
venusta 416.
Millepora 312, 318, 340.
alcicornis 291, 318.
muricata 312.
Millepora 318.
Milnia platysoma 72.
minima, *Callianassa* 92.
minimus, *Epialtus* 60.
minus, *Alpheus* 107, 109.
Synalpheus 109, 110.
minuta, *Asterina* 238.
Pinnixa 21.
mirabilis, *Axheia* 291, 295.
Cancer 78.
Nereis 193.
Pitho 77, 78.
Stylophora 295.
miriam, *Callinectes* 361.
Mitactis 358.
Mithraculus 65.
coronatus 71.
forceps 70.
hirsutipes 70.
nudus 69.
ruber 69.
Mithrax 52, 64, 65.
aculeatus 66, 67.
acuticornis 65, 66.
cinctimanus 65, 70.
coronatus 71.
coryphe 65, 71.
depressus 65, 68.
forceps 65, 70.
hemphilli 65, 69.
hispidus 65, 67, 68.
holderi 65, 69.
levimanus 65, 67.
nudus 69.
pliosus 65, 66.
pleuracanthus 65, 68.
plumosus 65, 67.
ruber 65, 69.
sculptus 65, 70, 71.
spinosissimus 65, 66.
verrucosus 67.
mobii, *Stichopus* 256, 257, 268.
Moema 255.
Moira atropos 255.
mollis, *Pachychalina* 390.
Monactinal 380.
Monaxonida 387.
monodactyla, *Pseudosquilla* 156.
Monoxenia 270.
moorei, *Hippolysmata* 115.
Paguristes 144.
Mopsea 274.
Mopseina 272.
Mopsella 273.
mordax, *Gelasimus* 7.
Uca 6, 7.
mueronata, *Callianidea* 94.
Mud Crab 28.
Mulleria 259.
agnassizii 259.
multicauda, *Eumicea* 285.
Gorgonia 285.
Munida 146.
affinis 147.
evermanni 146.
longipes 147.
stimpsoni 146, 147.
Munidopsis 148.
muricata, *Isopora* 291, 312, 313.
Millepora 312.
Muricea 275.
flexuosa 283.
Muriceides 275.
Muriceidae 275.
Muricea 275.
megaspina 282.
Mussa 302.
mutica, *Pelia* 62.
Pisa 62.
mutilata, *Castalia* 185.
Mycedia cucullata 310.
fragilis 310.
Mycedium 310.
calletti 311.
cucullatum 310.
cephantotus 310.
myriaster, *Axheia* 294.
Axheia 295.
Nalioora rapax 169.
Nannodendron 270.
nasuta, *Amphictelis* 206.
neglecta, *Astrangia* 298, 299.
Nemausa acuticornis 66.
rostrata 66.
Neoporites littoralis 317.
Nephrops 98.
Nephropsis 98.
Nephthidae 194, 269, 271.
Nephtya 271.
Nephtys squamosa 194.
Neptunus 44.
marginalis 48.
ordwayi 46.
sebae 46.
spincarpus 47.
sulcatus 45.

- Neptunus tumidulus* 51.
 ventralis 44.
neptunus, *Alpheus* 110.
Synalpheus 109, 110.
Nereidæ 193.
Nereis arroyensis 193.
 bairdii 193.
 gracilis 193.
 mirabilis 193.
nia, *Lupa* 44.
Nicella 277.
Nicidion brevis 200.
Nidalla 270.
nigrescens, *Tedania* 395.
nigromaculata, *Cirratulus* 204.
Nika bermudensis 104.
 couchii 104.
 edulis 104.
Nikida 104.
niotica, *Euryplax* 8.
 limnatis 213.
nitida, *Clythrocerus* 90.
nitidus, *Dissodactylus* 22.
Leiolambrus 80.
nivea compta, *Ophiozona* 240, 243.
nodifrons, *Menippe* 37.
nodosa, *Actæa* 33.
 Actæa rufopunctata 33.
 Polynæ 187.
nodosus, *Oreophorus* 89.
Petrollithes 134.
Spelæophorus 68, 89.
nodulifera, *Solanderia* 279, 280.
nodulosa, *Dynamene* 173.
notata, *Lysidice* 200.
Nothocaris 117.
Notopygos crinita 194. •
 nuciformis, *Luffaria* 407.
 nucula, *Chondrilla* 386.
nudimanus, *Pilumnus* 38, 39.
nudus, *Mithraculus* 69.
 Mithrax 69.
nuttingi, *Xanthias* 85.
nummiforme, *Discosoma* 304.
Nummulinidæ 416.
nymphæa, *Mammillifera* 332.
Zoanthus 332.
Nynanthæ 327, 328.
obeso-manus, *Alpheus* 106.
oblita, *Cyprastrea* 301.
obtruncata, *Cirolana* 166, 167.
occidentalis, *Eupanopeus* 28, 29.
 Panopeus 29.
Oceanapia oleracea 395.
ocellata, *Porcellana* 137.
Octactinaria 325.
oculata, *Goniada* 201.
 Phylodoce 191.
 Pseudosquilla 156.
oculea, *Panthalis* 188.
Oculina diffusa 291, 294.
Oculinidæ 294.
Ocypoda albicans 6.
 lateralis 14.
Ocypode albicans 6.
 arenarie 6.
 arenarie 6.
 rhombea 6.
Ocypodidæ 5, 6.
Odontocyathus 312.
ocæna, *Clavulina* 416.
Edipleura 14.
Odipus 122.
cerstedii, *Gonodactylus* 151, 152, 153, 155.
 Ophiotrix 240, 244.
 officinalis, *Euspongia* 402.
 oleracea, *Oceanapia* 395.
 Rhizochalina 395.
olfersi, *Palmemon* 124.
olfersii, *Bithynis* 123, 124.
 Ligia 175.
 Palmemon 124.
oligactes, *Astroscema* 241, 251.
Oligosilicina 386.
olivacea, *Ophionereis* 240, 248.
Oniscidæ 164, 176.
Oniscoidea 164, 175.
opalina, *Arabella* 199.
 Lumbriconereis 199.
Opheliidæ, 207.
Ophiacanthidæ 245.
- Ophiacantha bidentata* 240, 249.
 dispar 246.
 longibrachia 240, 246.
 loricata 240, 246.
 ophiactoides 240, 249.
Ophiactis 251.
 krebsii 240, 246.
ophiactoides, *Ophiacantha* 240, 249.
Ophiacæa glabra 241, 249.
Ophiaster guildingii 237.
Ophioblenna antillensis 251.
Ophiocoma echinata 240, 245, 263.
 pumila 240, 245.
 risei 240, 245.
Ophioglypha ljungmani 240, 243.
 robusta 240, 243.
Ophioplepis 251.
 elegans 240, 242.
 pauispina 251.
Ophiomitra 250.
Ophiomusium eburneum elegans 240, 243.
 sculptum 240, 244.
 validum 240, 244.
Ophiomyxa flaccida 241, 251.
Ophionereis dubia 240, 248.
 olivacea 240, 248.
 reticulata 240, 249.
Ophioplithaca spinissima 240, 250.
Ophiopristis hirsuta 240, 250.
Ophiopsila fulva 241, 245.
 risei 241, 245, 246.
Ophioscolex serratus 241, 250.
Ophiostigma isacanthum 240, 249.
Ophiotrix angulata 240, 244, 263.
 cerstedii 240, 244.
 suensonii 240, 244.
Ophiothyreus gressii 240, 243.
Ophiozona impressa 240, 243.
 nivea compta 240, 243.
 tessellata 240, 243.
Ophiura appressa 240, 242.
 brevicauda 240, 242.
 brevispina 240, 242.
 cinerca 240, 242.
 guttata 251.
 rubicunda 240, 242.
Ophiuroidea 239, 260, 261, 262, 263.
Orbiceila 300.
 acropora 291, 301, 302.
 annularis 301.
 cavernosa 300.
 hyades 302.
 radiata 300.
Orbiceilidæ 300.
Orbiculina adunca 416.
Orbitolites duplex 416.
 marginalis 416.
Orbulina univversa 416.
ordwayi, *Achelous* 44, 46.
 Neptunus 46.
 Portunus 44, 46.
Oreophorus nodosus 89.
Organidæ 269, 270.
Organidus 270.
Ornia 304.
ornata, *Eunice* 195.
 Pseudosquilla 155.
ornatus, *Callinectes* 47, 48.
 Teleophrys 65.
Orophorhynchus platirostris 148.
Orthodiene 380.
Orthotriene 380.
Ortmannia 118, 120.
 henshawi 120.
 potimirim 120.
Oscillaria spongellæ 410.
osculifera, *Actinia* 368, 370.
 Epicystis 368.
ostrearius, *Pinnotheres* 20.
ostreum, *Pinnotheres* 20.
Othonia 76.
 aculeata 77.
 anisodon 77.
 carolinensis 78.
 herminieri 77, 78.
 rotunda 78.
Oulactis 342, 350.
 fasciculata 346.
 foliulifera 346.
 foliosa 346.
- Oulactis granulifera* 348.
Oxæa 380.
Oxyaster 380.
Oxyhexaster 380.
Oxyophthalma, *Albunea* 139.
Oxyrhyncha 5, 52.
Oxystomata 5, 84.
Oyster crab 20.
Ozium 24, 37.
 reticulatus 37.
Pachychalina amaranthus 391.
 areolata 392.
 aurantiaca 393.
 inollis 390.
 rubens 392.
Pachycheles aokleianus 136.
 ruginimanus 136.
Pachygrapsus 15, 17.
 gracilis 17.
 transversus 17.
pachyphylla, *Manicina* 296.
packardii, *Alpheus* 105, 107.
Pagurias insignis 141.
Paguridæ 140.
Paguristes 132, 143.
 depressus 132, 143, 144.
 digueti 145.
 grayi 146.
 lymani 145.
 moorei 144.
 puncticeps 143, 144.
 rectifrons 143, 145.
 sayi 144.
 sericeus 145.
 spinipes 145.
 tentirostris 143.
 triangulatus 146.
 visor 145.
Pagurus 139.
 bernhardus 138.
 cubensis 142.
 diogenes 139.
 granulatus 140.
 marshi 139.
 sulcatus 141.
 tricolor 142.
 tuberculosus 142.
Palmemon 123, 125.
 acanthurus 123.
 afinis 125.
 affricanus 123.
 faustinus 124.
 hispidus 99.
 olfersi 124.
 pauensis 125.
 spinimanus 124.
 squilla 125.
Palmemonidæ 91, 123.
Palmemonetes carolinus 126.
Palmemonestes hystrix 252, 254.
Palmemon affinis 125.
 forceps 123.
 jamalcensis 123.
 macrobrachion 123.
 spinimanus 124.
Palmidæ 12.
Palmicus alternatus 12.
 sica 12, 13.
Palmirellus 98.
Palmuridæ 91, 98.
Palmurini 98.
Palmurus argus 98.
pallescens, *Spongella* 410.
pallidum, *Gnathophyllum* 126.
Palmate 380.
Palythoa 323, 331, 338, 340, 352.
 caribæa 329, 331, 341, 372, 373.
 caribæorum 341.
 mammillosa 331, 341.
panamensis, *Squilla* 160.
Pandalidæ 91, 117.
Pandalinæ 117.
Pandalopsis 117.
Pandalus longicauda 117.
panmosus, *Pilumnus* 38, 39.
Panopeus 28.
 abbreviatus 30.
 americanus 29.
 areolatus 29.
 bermudensis 29.
 hartii 29.

- Panopeus hemphilli* 31.
herbstii 28.
limosus 41.
occidentalis 29.
parvulus 30.
politus 30.
wurdemanni 29.
xanthiformis 32.
Panoplax 6, 12.
depressa 12.
Panthalis oculca 188.
Pantomus 117.
parvulus 118.
Pantulirus argus 98.
papillata, *Doroceidaris* 252.
papillosa, *Gorgonia* 283.
papyracea, *Siphonochalina* 395.
paractis solifera 355.
Paracynthus confertus 292.
de filippii 291, 292.
Paralecyonium 270.
Paramuricea 275.
hirta 281, 282.
Paranephthya 271.
Parapenæus 100, 101.
americanus 101, 102.
constrictus 101.
fissurus 102.
investigatoris 102.
megalops 101, 102.
similis 101.
Parastreia ananas 303.
fragum 303.
Parazoanthus 331.
Parenchyma 380.
parfaiti, *Synalpheus lavimanus* 109.
parisiensis, *Clavulina* 416.
Parisis 273.
Parogorgia 273.
Parthenopida 5, 79.
parva, *Cirolana* 167.
Cirolanida 166.
parva-pedata, *Lumbriconereis* 198.
parvistella, *Cladocora* 298.
parvulus, *Cancer* 27.
Eurypanopeus 30.
Panopeus 30.
Pantomus 118.
Xantho 30.
Xanthodius 27.
parvus, *Eupomatus* 210.
Pasiphacidae 91, 127.
patera, *Anthemiphyllia* 311.
Patuloscopia procumbens 393.
patuliscopia, *Ophioplepis* 251.
paulensis, *Leander* 125.
Palæmon 125.
Pavonia siderea 309.
Pectina elegans 297.
quadrata 297.
Pectinia 295.
cutibea 296.
dane 297.
disticha 296.
elegans 297.
mæandrites 296.
pectinata 296.
quadrata 296.
sebæ 297.
Pectinaria 206.
auricoma 206.
belgica 206.
gouldii 206.
greenlandica 206.
pectinata, *Meandrina* 295.
Pectinia 296.
pectoralis, *Metalia* 255.
pedunculatum, *Scalpellum* 179.
Pella 52, 62.
mutica 62.
pellata, *Foliolina* 390.
Penæide 91, 100.
Penæiden 100.
Penæus 100.
brasiliensis 100.
constrictus 101.
kroyeri 102.
Penæus 100.
Peneroplis pertusus 416.
Pennatula reniformis 279.
Pennatulacea 271.
Pennatulea 271.
Pennatulidæ 271.
Pentaceros reticulatus 237, 263.
Pentacrinus decorus 235.
Pentact 380.
Pentalophora 294.
Perenon 15, 19.
planissimum 19.
perforata, *Dynamene* 173.
Pericera 72.
caelata 73.
cornudo 73.
cornuta 360, 363.
cornuta caelata 73.
diacantha 74.
diacantha 74.
diplacantha 74.
subparallela 74.
trispinosa 74.
Pericharax 382.
carteri var. *homoraphis* 382.
Periclinenes 120, 121.
americanus 121.
perpusillus, *Clythrocerus* 90.
Persephona 86.
punctata 87.
pertusus, *Peneroplis* 416.
petiverii, *Acunthonyx* 60.
Petrochirus 140, 360.
bahamensis 140, 359.
granulatus 140.
Petrolisthes 133.
amœnus 135.
armatus 133.
jugosus 134.
marginatus 134.
nodosus 134.
quadratus 134.
tridentatus 134.
sexspinosus 133, 135.
Petrosia halichondrioides 389.
Phakella lobata 399.
Phellina 354.
Phenacia robusta 205.
Phenilia 277.
Philoscia eulebra 176.
Phoberus 98.
Phorbas amaranthus 391.
phrygia, *Leptoria* 306.
Phycogorgia 277.
Phylactidæ 329, 342, 343, 346.
Phyllactis 342.
Phyllangia americana 299.
floridana 299.
phyllangoides, *Astrangia* 299.
Phyllocenia limbata 301, 302.
Phyllochætopertus claperedii 205.
Phyllocœnia sculpta 301, 302.
Phyllodoce magna-oculata 191.
oculata 191.
Phyllodocidæ 191.
Phymanthidæ 329, 364, 368.
Phymanthus 328, 368.
crucifer 329, 368, 370, 372.
loligo 368.
pica, *Livona* 139.
Picroceroides 52, 76.
tubularis 76.
Pilochrota fibrosa 385.
fibrosa var. *globulariformis* 377, 385.
variabilis 384.
Pilorus 76.
pilosa, *Chalinopsilla* 401.
Porcellana 137.
pilosus, *Mithrax* 65, 66.
Pilumnidæ 5, 23, 24.
Pilumnus 24, 38.
brasiliensis 38, 40, 41.
dasypodus 38, 40.
floridanus 38, 40.
gemmatus 38, 39.
holosericus 38, 39.
lacteus 40.
marshi 38, 41.
nudimanus 38, 39.
pannosus 38, 39.
reticulatus 38.
tessellatus 38.
vinaceus 40.
Pinnateres guerinii 20.
Plunixa minuta 21.
Pinnotheres guerinii 20.
ostrearius 20.
ostreum 20.
Pinnotheridæ 5, 20.
Pisa bicornuta 72.
mutica 62.
trispinosa 74.
Plisidia sayana 137.
socia 137.
pisonii, *Aratus* 17.
Sesorma 17.
Pisosoma angustifrons 135.
glabra 135.
greeleyi 135.
serrata 135.
Pitho 52, 76.
aculeata 77, 78.
anisodon 77, 78.
herminieri 77, 78.
mirabilis 77, 78.
Placogorgia 275.
Plagiotriæne 380.
Plagusia 15, 19.
depressa 19.
plana, *Cyclodorippe* 90.
planicauda, *Cleantis* 174.
planispina, *Amphiodia* 241, 247.
planissimum, *Perenon* 19.
planissimus, *Cancer* 19.
Lefolophus 19.
platirostris, *Orophorhynchus* 148.
Platybema rugosum 113.
Platycaulus 277.
Platygorgia 276.
Platygyra 302, 305.
clivosa 306.
viridis 291, 306.
Platylambrus 79.
serratus 80.
Platypes 63.
Platypodia 24, 26.
spectabilis 26.
platysoma, *Microphrys* 71, 72.
Milnia 72.
Plesiastrea ramea 301, 302.
Plesionika 117.
pleuracanthus, *Mithrax* 65, 68.
Pleurocorallium 274.
Plexaura 276, 287.
crussa 285.
flexuosa 284.
heteropora 285.
homomalla 285.
porosa 285.
rhypidalis 284.
salicornoides 284.
turgida 283.
Plexaurella 276.
dichotoma 285.
Plexauridæ 273, 276.
Plexauroides 276.
pliocœnia, *Manicina* 305.
Plumarella 275.
plumata, *Lysiosquilla* 151, 156, 157.
plumosus, *Mithrax* 65, 67.
Podarke agilis 185.
Podochela 52, 53.
macrodera 53.
riisei 53, 54.
Pocillobella 213.
pocyi, *Alpheus* 106.
Megalobrachium 136.
Porcellana 136.
Polla delineata 226.
politus, *Panopeus* 80.
Polynce branchiata 186.
brevisetosa 186.
nodosa 187.
polytricha 186.
Polynoidæ 186, 189.
Polyonyx 136, 138.
macrocheles 138.
Polystomella striatopunctata 416.
Polytheres acuta 404.
polytricha, *Harmothoe* 186.
polypus, *Adamsia* 359.
Calliactis 359, 361.
Polyserial 380.
Polystachys 312.
polytricha, *Polynce* 186.
Pomatostegus stellatus 210.

- ponce, *Dasychone* 209.
pontifera, *Lithadia* 88.
Pontonia 120, 121.
 domestica 122.
 grayi 122.
 mexicana 122.
Pontonidae 91, 120.
Pontoninae 120.
porcata, *Dichocentria* 303.
Porcellana amana 135.
 armata 133.
 gundlachi 133.
 macrocheles 138.
 ocellata 137.
 pilosa 137.
 pocyi 136.
 sagrai 137.
 sayana 137.
 sexspinosa 133.
 sigbeeiana 137.
 sociata 137.
 soriata 137.
 stimpsoni 137.
Porcellanidae 131.
poris stellatis, *Corallium* 314.
Porites 314, 325, 331.
 agaricus 317.
 astreoides 317.
 astreoides 291, 317.
 branneri 317.
 clavaria 314.
 collegniana 317.
 conglomeratus 317.
 guadalupensis 317.
 incarta 317.
 michellini 317.
 porites 291, 314, 316.
 solida 317.
 subtilis 317.
 superficialis 317.
 verrilli 317.
porites, *Madrepora* 314.
 Porites 291, 314.
Poritidae 314.
porosa, *Gorgonia* 285.
 Plexaura 285.
 Tetracella 180.
portoricensis, *Cynthoceras* 291, 293.
 Homoriscus 98.
 Spongodes 279.
Portunidae 5, 44.
Portunus cribrarius 50.
 depressifrons 44, 45.
 ordwayi 44, 46.
 ruber 51.
 sebae 44, 46.
 spinicarpus 44, 47.
 spinimanus 44, 45.
 sulcatus 44, 45.
 ventralis 45.
Potamonidae 5, 23.
potimirim, *Atyoida* 120.
 Ortmannia 120.
 pourtalesii, *Primnoa* 281.
 praecincta, *Truncatulina* 416.
 praecox, *Alpheus* 109.
 praelongus, *Euceramus* 138.
 praerupta, *Manicina* 305.
 praetexta, *Hesione* 184.
 Primary fiber 380.
 Primnoa 275.
 pourtalesii 281.
 Primnoella 275.
 Primnoide 275.
 Primnooides 275.
 Primnoidiinae 272.
 Primnoinae 272.
 Primnois 274.
 princeps, *Cancer* 86.
 Hepatus 86.
 Prionastrea 301, 302.
 Processa canaliculata 104.
 proctochona, *Fallacia* 184.
 Hesione 184.
procumbens, *Patuloseula* 393.
 Siphonochalina 393.
profunda, *Ctenophyllia* 296, 297.
proliferum, *Lophophyllum* 331.
Protractidae 324, 326.
Protanthea 327.
Protanthea 326, 327, 328.
- Protanthea gundlachi* 97.
proteus, *Zoanthus* 332.
Protocaulidae 271.
Protocladus 380.
Protopolythoa variabilis 329, 338, 372, 373.
Prototilidae 271.
Protostichodactylinae 326.
Protrisene 380.
Protulides elegans 209.
Psammogorgia 276.
Psammolyce rigida 188.
Pseuderichthus 154.
 communis 156.
 distinguendus 156.
Pseudocarcinus rumphii 37.
Pseudogorgia 270.
Pseudoplexaura 276.
Pseudosquilla 154.
 ciliata 151, 153, 154, 155.
 communis 156.
 monodactyla 156.
 oculata 156.
 ornata 155.
 stylifera 154.
Pseudothelphusa sinuatifrons 23.
Psilacabaria 273.
Pterocididae 271.
Pterogorgia acerosa 287.
 bipinnata 287.
 puella, *Thoe* 63.
 pugilis, *Strombus* 145.
 pugnax rapax, *Uca* 6, 7.
 pulchella, *Amphiodia* 241, 248.
 Mamillifera 332.
 pulehellus, *Zoanthus* 329, 332, 372.
 Pulvulinina menardii 416.
 tumida 416.
pumila, *Ophiocoma* 240, 245.
punctata, *Cancer* 87.
 Cucumaria 259.
 Persephona 87.
punctatissimus, *Leiolambrus* 81.
puncticeps, *Paguristes* 143, 144.
pusilla, *Glyptoplax* 83.
 Micropanope 33.
pygmaea, *Truncatulina* 416.
Pyrula melongena 359.
Pytho 76.
 quadrata, *Ctenophyllia* 296.
 Pectina 296, 297.
 quadratus, *Petrolisthes* 134.
 quadridentata, *Frevillea* 9.
 Tetraplax 9.
 quinquedentatus, *Hexapanopeus* 30, 31.
 quinqueluneata, *Eulalia* 192.
 radians, *Astraea* 309.
 Madrepora 309.
 Siderastrea 291, 309, 354, 358.
Radianthus 364.
radiata, *Orbicella* 300.
ramea, *Plexiastrea* 301, 302.
ramosum, *Anthostoma* 203.
rapax, *Gelasimus* 7.
 Nalioora 169.
 Uca pugnax 6, 7.
rastellifera, *Euprognatha* 58.
Rhabdus 380.
Rhaphide 380.
rhipidalis, *Plexaura* 284.
Rhipidogorgia flabellum 287.
Rhizochalina oleracea 395.
Rhizoxenia 270.
Rhodactis 364.
 sancti-thomae 326.
 rhombea, *Ocyrope* 6.
 Rhynchoecyclus 113.
 Ricordea 363, 364.
 florida 363.
ricordi, *Holometopus* 18.
 Sesarma 18.
rigida, *Psammolyce* 188.
riisci, *Amphiodia* 241, 248.
 Clavularia 278.
 Ophiocoma 240, 245.
 Ophiopsila 241, 245, 246.
 Podocheila 53, 54.
 Telesto 278.
robusta, *Ophioglypha* 240, 243.
 Phenacia 205.
Rocinela signata 171.
rosaceus, *Echinanthus* 252, 254.
- rose*, *Truncatulina* 416.
rostrata, *Nemausa* 66.
rostratipes, *Alpheus* 105, 108.
Rotalidae 416.
rotifera, *Chiridota* 259.
rotulosa, *Hellastraea* 302.
rotunda, *Otkonia* 78.
rousseaui, *Eunicea* 283.
rubens, *Chalina* 392.
 Euchalinopsis 392.
 Pachychalina 392.
ruber, *Achelous* 51.
 Cronius 51.
 Mithraculus 69.
 Mithrax 65, 69.
 Portunus 51.
rubicunda, *Ophiura* 240, 242.
rubiginosa, *Actinometra* 235.
rubra, *Charybdeella* 51.
 Eunice 197.
rufopunctata nodosa, *Actea* 33.
ruginantus, *Pachycheles* 136.
Rugosa 325.
 Rugosum, *Platybema* 113.
rumphii, *Cancer* 37.
 Menippe 37.
 Pseudocarcinus 37.
sabra, *Pectinia* 297.
Sabella melanostigma 208.
 spectabilis 208.
Sabellidae 208.
sabulosa, *Cancer* 133.
 Hypococheila 133.
sacculifera, *Globigerina* 416.
Sagartidae 329, 352, 354, 358, 361.
 Sugartinae 354.
 Sagitta 380.
 sagittaria, *Leptopodia* 53.
 sagittarius, *Cancer* 53.
 Stenorynchus 53.
sagrai, *Porcellana* 137.
salicornoides, *Plexaura* 281.
sancti-thomae, *Actinotryx* 363.
 Rhodactis 326.
Sand crab 6.
 dollars 252.
 stars 239.
Sanidaster 380.
sapidus acutidens, *Callinectes* 47.
Saracka 270.
Sarcodictyon 270.
Sarcophyium 270.
Sarcotrogus foetidus 406.
saulcyi, *Alpheus* 109.
 var. brevicarpus, *Alpheus* 109.
 var. longicarpus, *Alpheus* 110.
savignii, *Leptochelia* 166.
savignyi, *Bithynis* 123, 124.
 Brachycarpus 124.
 sayana, *Plisidia* 137.
 Porcellana 137.
 sayi, *Paguristes* 144.
scaber, *Atys* 119.
 Atya 119.
Scalopidia 9.
Scalpellum pedunculatum 179.
 velutinum 179.
schmidtii, *Agelas* 398.
 Tribrachium 385.
schrammi, *Axochelia* 295.
Scirpearia 277.
Scirpearia 277.
Scleractinia 292.
Scleranthelia 270.
Scleraxonia 272.
Sclere 380.
Sclerisis 274.
Sclerogorgidae 272, 273.
Scleronephthya 271.
sclopeterius, *Cancer* 14.
 Clibanarius 142.
Scolymia 302.
sculpta, *Maia* 71.
 Phylloconia 301, 302.
sculptum, *Ophiomusium* 240, 244.
sculptus, *Mithrax* 65, 70, 71.
scutellata, *Hippa* 138.
scutellatus, *Rempes* 138.
Scyllaridae 91, 97.
Scyllarides equinoctialis 97.
Scyllarus equinoctialis 97.

- Seyllarus americanus* 97.
Seyphactinaria 325.
Seyphomedusa 325.
Seyphozoa 325.
Seyramathia 52, 61.
hystrix 62.
 Sea cucumbers 256.
 eggs 252.
 lilies 235.
 moons 252.
 squirts 256.
 urchins 252.
 sebae, *Achelous* 44, 46.
 Lupea 46.
 Neptunus 46.
 Portunus 44, 46.
 Secondary fiber 380.
securis, *Madrepora* 312.
semilunaris, *Echinoneus* 255.
seminulum, *Miliolina* 416.
Semperina 273.
senegalensis, *Luidia* 237.
Septastrea sexradiata 299.
septemspinus, *Apinus* 54.
 Apocremnus 54.
sericeus, *Paguristes* 145.
 Serpent stars 239.
serrata, *Meandrina* 306.
 Pisosoma 135.
serratorbita, *Leptocheila* 113, 127.
serratus, *Lambrus* 80.
 Ophiocolex 241, 250.
 Platylambrus 80.
 Serpulidae 210.
Sesarma 15, 18.
 cinerea 18.
 curacaoense 18.
 pisolii 17.
 ricordi 13.
setacea, *Xiphogorgia* 285.
seticornis, *Stenorynchus* 53.
setiger, *Xantho* 84.
setigera, *Actea* 33, 34.
setirostris, *Leptopisa* 75.
setosum, *Diadema* 252, 253.
sexforis, *Mollita* 252, 254.
sexradiata, *Septastrea* 299.
sexspinosa, *Porcellana* 133.
sexspinus, *Petrolisthes* 133, 135.
scythellensis, *Alemo* 388.
 Tethya 388.
Shrimps 3, 91.
sic, *Cymoploia* 13.
 Paleus 12, 13.
siciliensis, *Eunic* 196.
Sicyonia 100, 103.
 dorsalis 103.
 hevigata 103.
Siderastrea crenulata 309.
 galaxea 309.
 grandis 309.
 radians 354, 358.
 siderca 309.
 stellata 309.
Siderastrea 300, 309.
 globosa 309.
 radians 291, 309.
 siderca 291, 309.
sideria, *Astrea* 309.
 Madrepora 309.
 Pavonia 309.
 Siderastrea 291, 309.
Siderina galaxea 309.
 Sigma 380.
 Sigmaspire 380.
 signata, *Rocinela* 171.
 sigueliana, *Porcellana* 137.
 similis, *Parapenaeus* 101.
 simplex, *sthenelais* 187.
 sinuatifrons, *Boschia* 23.
 Eplilobocera 23.
 Pseudothelphusa 23.
sinuosa, *Madrepora* 307.
 Meandrina 306.
sinuosissima, *Meandrina* 306, 308.
Siphonochalina 393.
 papyracea 393.
 procumbens 393.
 spiculosa 394.
Siphonochalinops 398.
Siphonogorgia 271.
 Siphonogorgina 271.
 Siphonostomum cariboum 208.
 socia, *Pisidia* 137.
 sociata, *Actinia* 333.
 Porcellana 137.
 sociatus, *Zoanthus* 329, 331, 332, 333, 372.
 sol, *Actinia* 363.
 Adamsia 359.
 Cercus 359.
Solanderia 273.
 crustata 280.
 nodulifera 279, 280.
Solenastrea 301, 302.
 byades 302.
Solenocaulon 273.
Solenolambrus 79, 81.
 decemspinus 81, 82.
 typicus 81.
 solida, *Porites* 317.
 solidissima, *Copatias* 387.
 solifera, *Actinia* 355.
 Aiptasia 355, 357, 358.
 Bartholomea 355, 358.
 Paraetis 355.
 solitaria, *Acis* 285.
 Astrangia 291, 298, 299.
 Caryophyllia 298.
 Leptogorgia 285.
Somal 380.
 soriata, *Porcellana* 137.
 sororia, *Spinosella* 395.
 Tuba 395.
spectabilis, *Cancer* 26.
 Platypodia 26.
 Sabella 203.
Spelaeophorus 86, 88.
 clavatus 88.
 nodosus 88, 89.
 triangulus 88.
Speocarcinus 6, 10.
 carolinensis 11.
 sphaeroconia, *Caminus* 386.
Sphaerohexaster 380.
Sphaeromidae 164, 172.
Sphenopus 331.
Spheraster 380.
spherulata, *Bunodosoma* 323, 329, 334, 350, 366, 372, 373, 374.
Spherule 380.
Spicula 271.
Spiculo-fiber 381.
spiculosa, *Siphonochalina* 394.
spiniacarpus, *Achelous* 44, 47.
 Neptunus 47.
 Portunus 44, 47.
spinidentata, *Eucratoplax* 11.
 Eucratopsis 11.
spinifera, *Actea* 34.
spinimanus, *Achelous* 44, 45.
 Palaemon 124.
 Palaemon 124.
 Portunus 44, 45.
spinipes, *Paguristes* 145.
spinissima, *Ophioplithaca* 240, 250.
spinosa, *Euprognaetha rastellifera* 58.
 Microciona 395.
 Thrinacophora 400.
Spinosella 394.
 sororia 395.
 spinosissima, *Mia* 66.
spinosissimus, *Gonodactylus* 153.
 Mithrax 65, 66.
spinus, *Echinaster* 238.
 Gonodactylus 153.
Spiraster 381.
Spiroculina grata 416.
splendida, *Eulepis* 189, 190.
 Lumbriconereis 199.
Spongelia 410.
 fragilis var. *irregularis* 410.
 pallidescens 410.
 velata 402.
spongella, *Oscillaria* 410.
Spongella 410.
Spongia fenestrata 408.
 intestinalis 402.
Spongia 401.
Spongia 381.
Spongioderma 273, 279.
Spongiodermin 272.
spongiphila, *Syllis* 133.
Spongodes 271.
 portoricensis 279.
 squamosa, *Nephtys* 194.
 Squilla biformis 160.
 ciliata 154.
 empusa 160.
 intermedia 151/159, 160.
 panamensis 160.
 stylifera 154.
Stachyodes 275.
Stachyptilidae 271.
Starfishes 236.
stearnsii, *Amphioplus* 241, 248.
Stegmister wesseli 238.
Stellangia reptans 299.
stellata, *Siderastrea* 309.
stellatus, *Pomatostegus* 210.
 Torebella 210.
Stelleidae 384.
stelloides, *Aulactinia* 347, 352.
Stelospinosus 401.
Stenella 275.
Stenocionops 52, 72.
 furcata 73.
 furcata cœlata 73.
Stenogorgia 277.
Stenopidea 91, 99.
Stenopidea 99.
Stenopus hispidus 99.
Stenorynchus 52, 53.
 sagittarius 53.
 seticornis 53.
Sterraster 381.
Stenelais grubei 187.
 luxuriosa 188.
 simplex 187.
Stiboria 302.
Stichodactylina 323, 326, 327, 328, 329, 342, 363, 364, 368, 369.
Stichopus mobii 256, 257, 263.
strigosa, *Meandrina* 306.
stimpsoni, *Amphura* 241, 247.
 Munda 146, 147.
 Porcellana 137.
stimpsonii, *Elbala* 87.
Stoichactide 329, 361, 365.
Stoichactis 328, 361, 365.
 helianthus 329, 365, 366, 367, 368, 370.
 stokesi, *Dichocenia* 305.
Stomatopoda 151.
Streptaster 381.
Streptelasma 330.
streptochirus, *Alpheus* 106.
striatopunctata, *Polystomella* 416.
strigosa, *Meandrina* 308.
Strombus gigas 140.
 pugilis 146.
Strongyle 381.
Strongyloxea 381.
Strophogorgia 274.
Strophogorgia 272.
Stylaroides glabra 208.
Stylatulide 271.
Style or stylus 381.
stylifera, *Pseudosquilla* 154.
 Squilla 154.
Stylophora mirabilis 295.
Stylophoridae 294.
subangularis, *Echinometra* 252, 253, 263.
subdepressus, *Clypeaster* 255.
subdermal cavity 381.
Suberia 273, 280.
Suberites aptos 388.
Suberogorgia 273.
 subparallel, *Pericera* 74.
 subparallelum, *Macrocoloma* 73, 74.
 subtilis, *Amphipholis* 241, 247.
 Porites 317.
Subtylostylus 381.
subsonii, *Ophiothrix* 240, 244.
sulcata, *Calappa* 84, 85.
 Lysidice 200.
sulcatus, *Calcinus* 141.
 Neptunus 46.
 Pagurus 141.
 Portunus 44, 45.
 sulcirostris, *Epialtus* 60.
 superficialis, *Meandrina* 308.
 Porites 317.
surinamensis, *Holothuria* 256, 259.
Swiftia 277.

- swiftii, Gemmaria 331.
 Syllidæ 183.
 Syllis complanata 183.
 spongiphila 183.
 symmetrica, Bathyaectis 311.
 Fungia 311.
 symnista, Albunea 139.
 Sympodium 270.
 Synalpheus 104, 109.
 ævimanus longicarpus 109, 110.
 ævimanus parvifili 109.
 minus 109, 110.
 noptunus 109, 110.
 Synapta lappa 256, 259.
 vivipara 259, 260.
 Synaptidæ 260.
 laniatus, Bunodes 348, 350.
 Tæniosoma curtum 226.
 delineata 226.
 delineatum 225, 226.
 discolor 225, 226.
 taquetes, Alptasia 355.
 talpoida, Emerita 138.
 Hippa 138.
 Tanaidæ 163, 165.
 Tealia 347.
 Tedania Brucei 395.
 digitata 395.
 nigrescens 395.
 Teleophrys 52, 64.
 ornatus 65.
 Telesto 270.
 riisci 278.
 tenuirostra, Macrocoeloma 75.
 tenuirostris, Paguristes 143.
 tenuispina, Asterias 238.
 Terebella annulifilis 205.
 stellatus 210.
 turgidula 205.
 variegata 205.
 Terebellidæ 205.
 tessellata, Glycera 201.
 Ophiözona 240, 243.
 tessellatus, Pilumnus 38.
 testudinarius, Remipes 138.
 testudinata, Mellita 252, 254.
 Tethya scyhellensis 388.
 Tethydæ 388.
 Tethys lynceium 388.
 Tetillidæ 388.
 Tetracita porosa 180.
 Tetractinellida 383.
 Tetraplax 6, 9.
 quadridentata 9.
 Tetraxon 881.
 Textularia gramen 416.
 Textularidæ 416.
 thalamita, Melybia 43.
 Thalassia marina 351.
 Thalassianthidæ 364.
 Thalassinidæ 91.
 thallia, Bunodes 349, 350.
 Thaumactis 328.
 thayeri, Uca 6, 7.
 Thelepus crassibranchiatus 206.
 Thoe 52, 63.
 aspera 63.
 puella 63.
 Thor 113, 116.
 floridanus 116.
 Thouarella 275.
 Thrinacophora spinosa 400.
 Thesea 275.
 Thyone 259.
 Titanideum 273.
 Titanidium 273.
 torquatus, Clymene 207.
 torquata, Clymenella 207.
 Tornote 381.
 Toxa 381.
 Toxopneustes variegatus 252, 253, 263.
 Tozeuma 113, 114.
 carolinense 114.
 Trachonites 65.
 transverso-dactylus, Alpheus 105.
 transversus, Grapsus 17.
 Pachygrapsus 17.
 Triane 381.
 triangulus, Spelæophorus 88.
 triangulatus, Paguristes 146.
 Triaxonia 382.
 Tribraichium schmidti 385.
 tribuloides, Cidaris 252.
 tricarinata, Lysiosquilla 157.
 Miliolina 416.
 Trichodagmata 381.
 tricolor, Actinia 359, 363.
 Adamsia 359.
 Calliactis 329, 358, 359, 361, 372, 374.
 Clibanarius 142.
 Pagurus 142.
 tricophylla, Astræa 309.
 tricornis, Corallina 169.
 tridentatus, Petrolisthes 134.
 tridentulatus, Alpheus 109.
 trigona, Jousseaumea 111.
 triloba, Euphrosyne 194.
 trispinosa, Macrocolona 74.
 Pericera 74.
 trispinosum, Macrocoeloma 73, 74.
 tristis, Antipathes 287.
 True crabs 3.
 Truncatulina præincta 416.
 pygmaea 416.
 rosea 416.
 Tuba sororia 395.
 Tubastræ 301.
 tuberculata, Antinedia 336.
 tuberculatus, Zoanthus 336.
 tuberculosa, Cystiactis 351.
 tuberculosus, Pagurus 142.
 Tubercella naptos 388.
 Tubipora 270.
 Tubiporidæ 269, 270.
 tubularis, Pteroceroidea 76.
 tulipa, Fasciolaria 359.
 tumida, Pulvinulina 416.
 tumidula, Charybdella 51.
 tumidulus, Achelous 51.
 Neptunus 51.
 tumidus, Callinectes 49.
 Turbo versicolor 358.
 turgida, Eunnicea 283.
 Plexaura 283.
 turgidula, Terebella 205.
 tupa, Callianidea 94.
 typicus, Solenolambrus 81.
 Tylopora 312.
 Tylostylus 381.
 Tylote 381.
 Uca 6, 14.
 leptodactyla 6, 7.
 mordax 6, 7.
 pugnax 7.
 pugnax rapax 6, 7.
 thayeri 6, 7.
 Ucidés cordatus 14.
 ultramarina, Actinia 368.
 Umbellulidæ 271.
 umbrinus, Dasybranchus 206.
 unclifer, Diptychus 148.
 Uroptychus 148.
 uncinatus, Eupomatus 210.
 Undaria 310.
 andata, Madrepora 310.
 Uniaxial 381.
 unicolor, Brissus 255.
 unipedalis, Cladocora 298.
 Uniserial 381.
 universa, Orbulina 416.
 Urocaris 123, 126.
 longicaudata 126.
 Uroptychus unclifer 148.
 Urticina 347.
 crassicornis 358.
 lessoni 348, 350.
 Uva, Favia 303.
 Uvigerina pygmaea 416.
 valencienncsi, Murexina 305.
 validum, Ophiomastum 240, 244.
 Valvifera 164, 174.
 variabilis, Gemmaria 331, 338.
 Hircinia 405.
 Pliochrota 384.
 Protopolythoa 329, 338, 372, 373.
 varians, Hernella 210.
 variegata, Terobella 205.
 variegatus, Toxopneustes 252, 253, 263.
 velata, Spongelia 492.
 velutinum, Scalpellum 179.
 ventralis, Neptunus 44.
 Portunus 45.
 ventricosa, Meoma 255.
 venusta, Miliolina 416.
 Verostilla 272.
 Vermilia annulata 210.
 Verongia hirsuta 409.
 verrilli, Porites 317.
 verrucosa, Bunodes 347, 354.
 verrucosus, Mithrax 67.
 versicolor, Turbo 358.
 Vertebralina insignis 416.
 Verucella 277.
 Viatrix globulifera 351.
 Villogorgia 275.
 vinaceus, Pilumnus 40.
 violacea-maculata, Eunice 196.
 Virgulariidæ 271.
 virgulata, Leptogorgia 287.
 viridis, Echinometra 252, 253.
 Platygyra 291, 306.
 visor, Paguristes 145.
 vittigera, Hestione 184.
 vivipara, Synapta 259, 260.
 vocator, Gelasimus 6.
 Voeringia 271.
 wesseli, Stegnaster 238.
 wilcockensis, Astrangia 290.
 Wrightella 273.
 wurdemannii, Panopeus 29.
 Xanthias 24, 34.
 nuttingii 35.
 Xanthidæ 23.
 xanthiformis, Micropanope 32.
 Panopeus 32.
 Xantho denticulatus 27.
 parvulus 30.
 setiger 34.
 Xanthodes 34.
 Xanthodius 24, 27.
 parvulus 27.
 Xenia 270.
 Xenidæ 269.
 Xenidæ 270.
 Xiphias 141.
 Xiphigorgia 277.
 setacea 285.
 Xiphocaris elongata 118.
 Xiphopenaeus hartii 102.
 kroyeri 102.
 Xylopagurus rectus 143.
 Zaphrentidæ 330.
 zebra, Gnathophyllum 126.
 Zoanthactiniaria 325.
 Zoantharia 324, 327, 329, 330.
 Zoanthoe 323, 324, 325, 330, 338, 340.
 Zoanthidæ 329, 330, 331, 336, 340, 352.
 Zoanthiniaria 325, 330.
 Zoanthus auricula 332.
 flos-marinus 332, 333.
 nymphæa 332.
 proteus 332.
 pulchellus 329, 332, 372.
 sociatus 329, 331, 332, 333, 372.
 tuberculatus 336.
 Zoroaster ackleyi 237.
 fulgens 237.