



Abb. 469—471: *Potamocarcinus (Potamocarcinus) armatus* MILNE EDWARDS. — Abb. 472—474: *Potamocarcinus (Raddaus) bocourti* grallator (RATHBUN). — Abb. 475, 476: *Potamocarcinus (Raddaus) bisuturalis* (RATHBUN), Holotypus. — Abb. 477—479: *Ptychophallus (Ptychophallus) tumimanus* (RATHBUN), Holotypus.

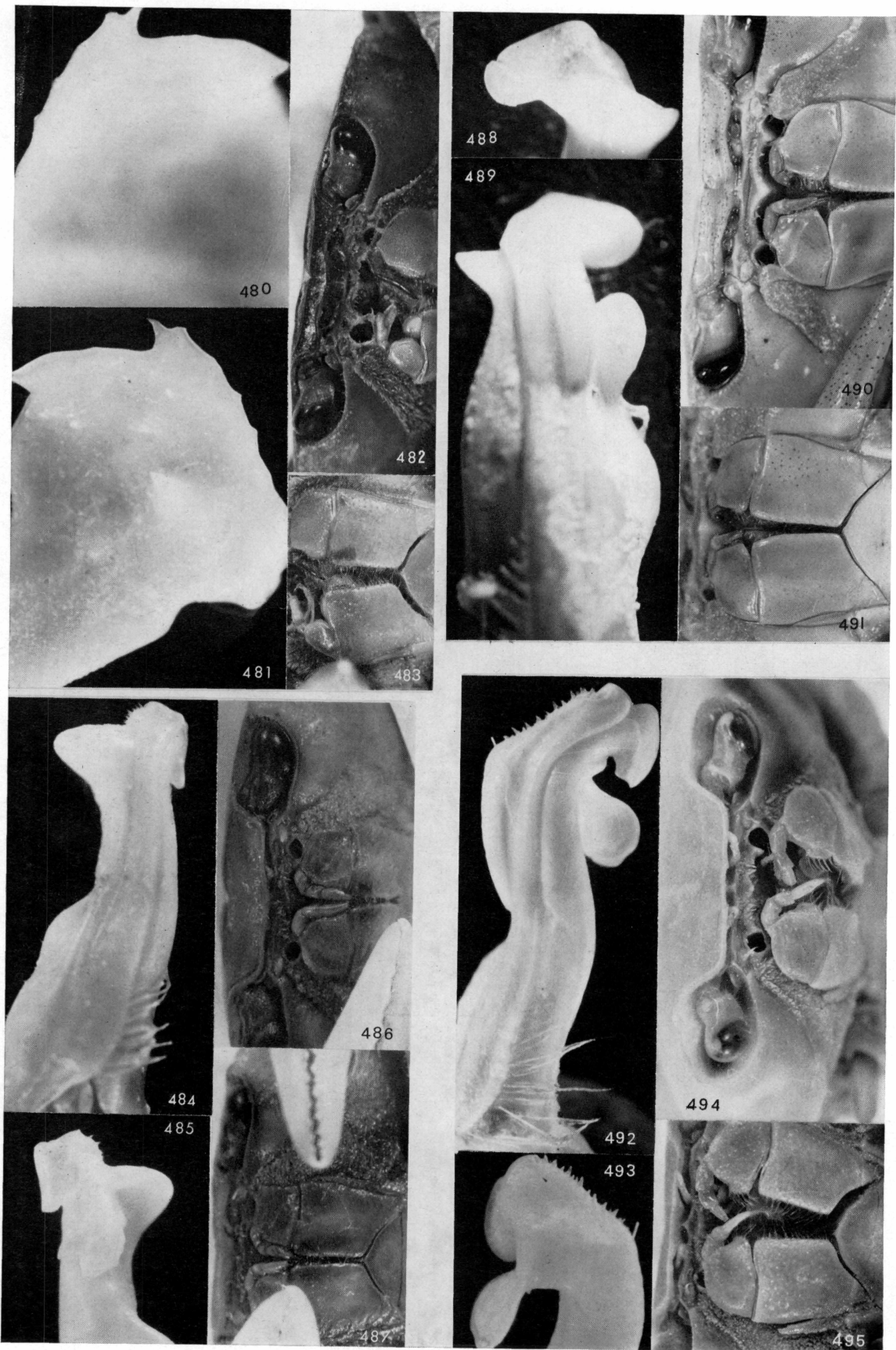


Abb. 480—483: *Potamocarcinus (Raddaus) mertensi* (BOTT), Holotypus. — Abb. 484—487: *Elsalvadoria arcuata* (BOTT), Holotypus. — Abb. 488—491: *Ptychophallus (Semiptychophallus) colombianus paraxanthusi* (BOTT). — Abb. 492—495: *Elsalvadoria tombaasi* BOTT, Holotypus.



Abb. 496—498: *Ptychophallus* (*Ptychophallus*) *tristani* (RATHBUN), Holotypus. — Abb. 499—501: *Ptychophallus* (*Ptychophallus*) *tumimanus* (RATHBUN), Holotypus. — Abb. 502—504: *Ptychophallus montanus convexus* (RATHBUN), Holotypus. — Abb. 505—507: *Ptychophallus* (*Ptychophallus*) *cocleensis* nov. spec., Holotypus.

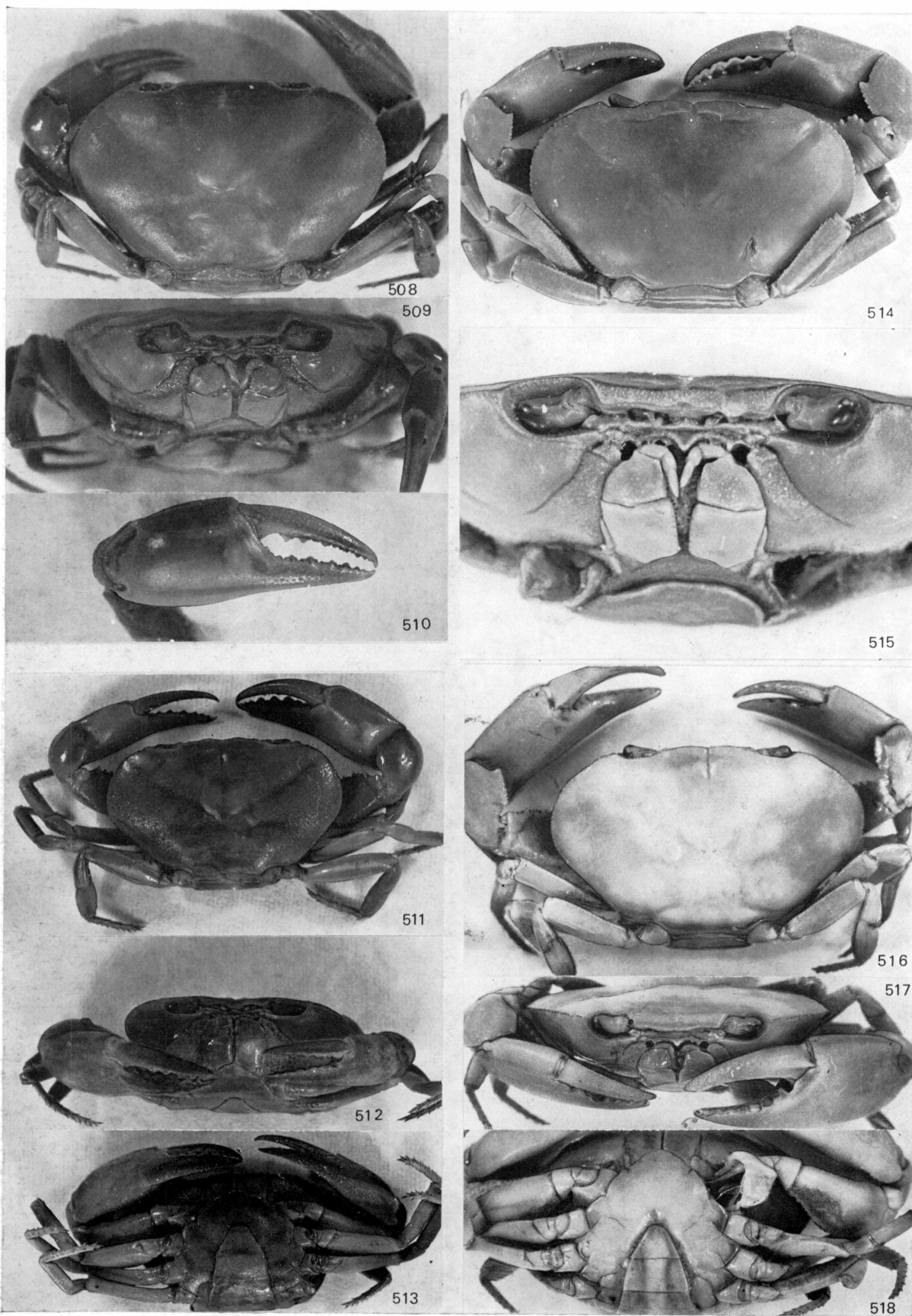


Abb. 508—510: *Ptychophallus (Ptychophallus) exilipes* (RATHBUN), Holotypus. — Abb. 511—513: *Ptychophallus (Ptychophallus) montanus montanus* (RATHBUN), Holotypus. — Abb. 514, 515: *Ptychophallus (Semiptychophallus) colombianus* (RATHBUN), Holotypus. — Abb. 516—518: *Ptychophallus (Semiptychophallus) colombianus paraxanthusi* (BOTT).

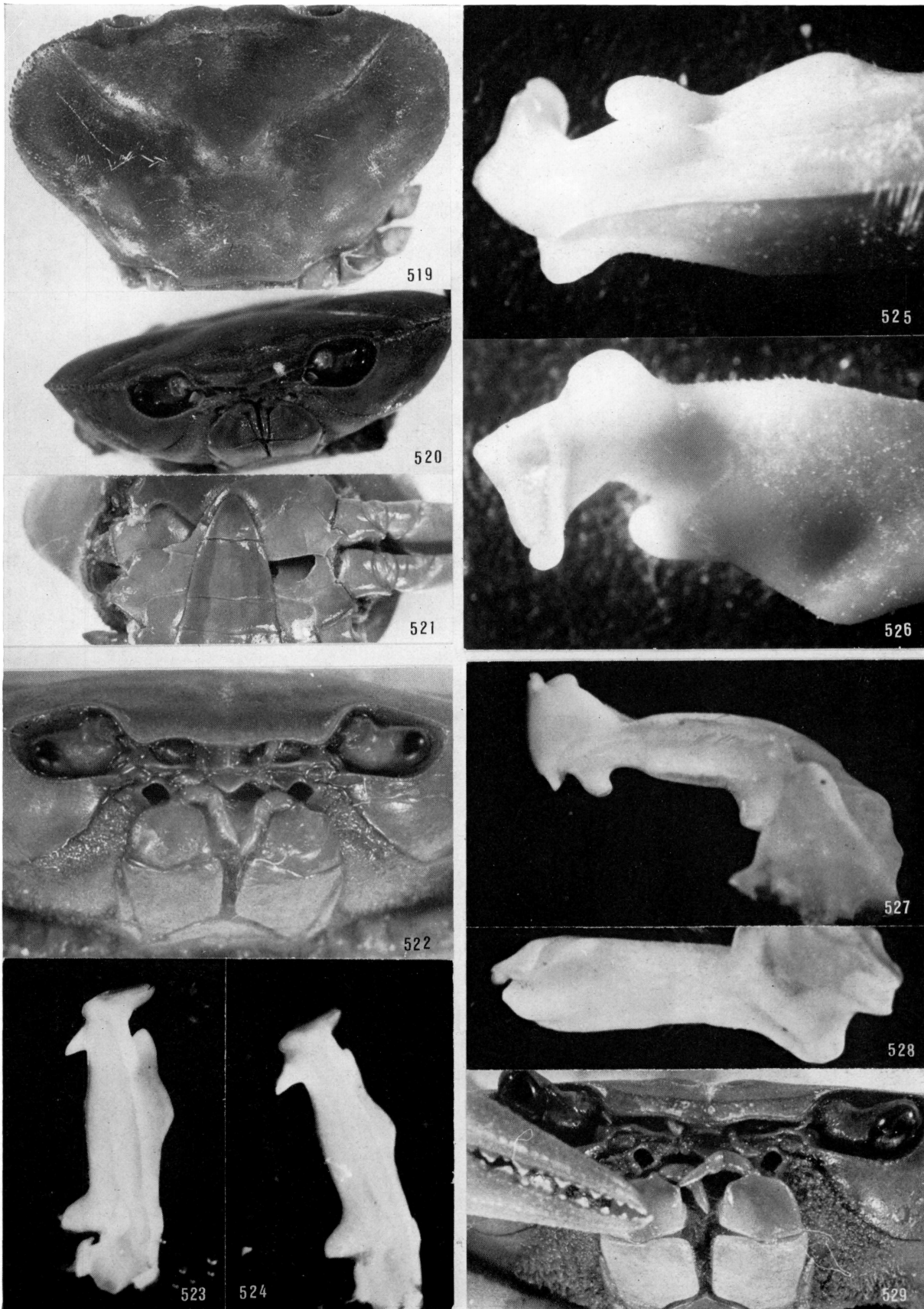


Abb. 519—521: *Potamocarcinus (Raddaus) tuberculatus* (RATHBUN), Lectotypus. — Abb. 522—524: *Ptychophallus (Ptychophallus) exilipes* (RATHBUN), Holotypus. — Abb. 525, 526: *Ptychophallus (Semiptychophallus) columbianus columbianus* (RATHBUN). — Abb. 527—529: *Ptychophallus (Microptychophallus) goldmanni* nov. spec., Holotypus.

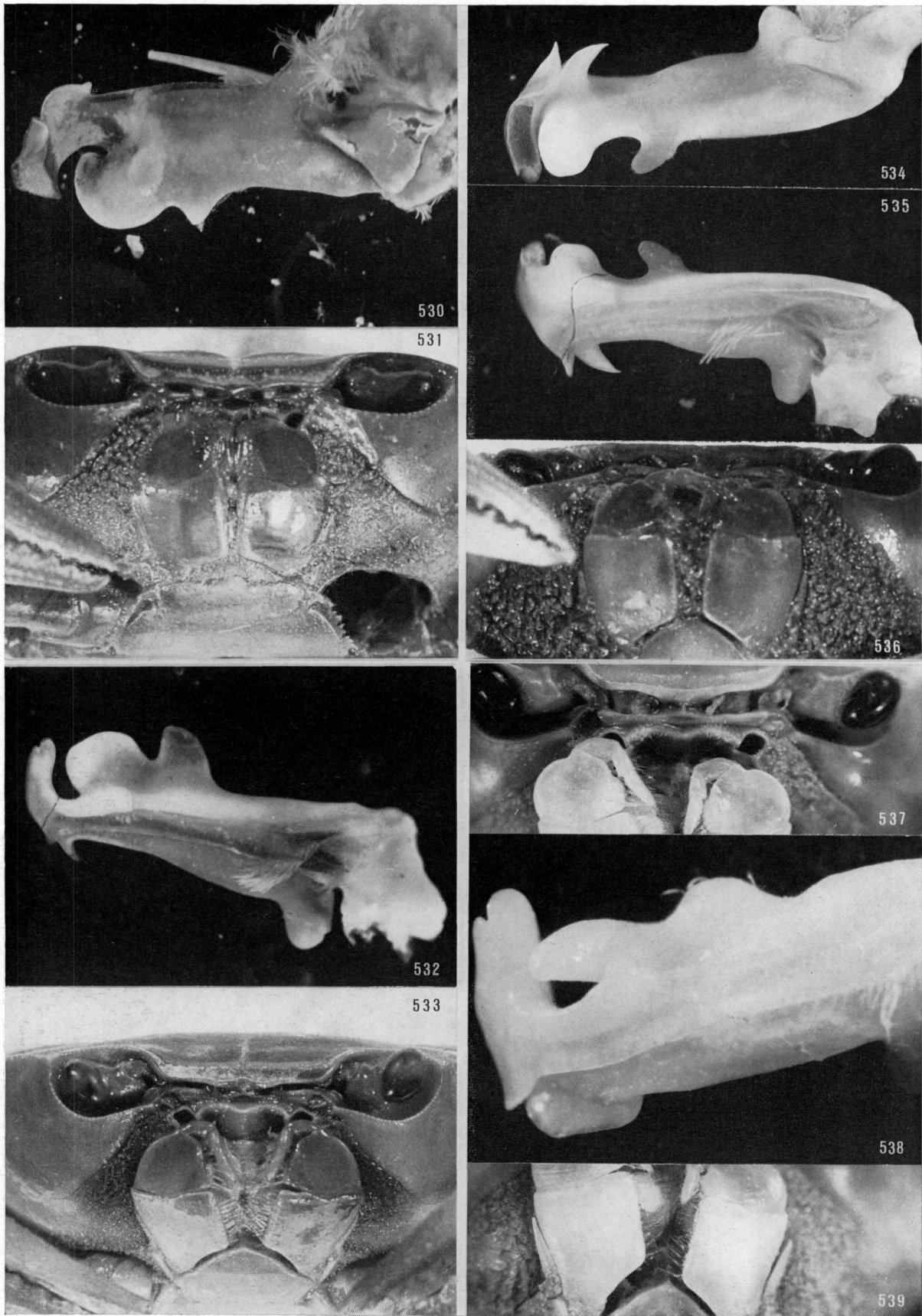


Abb. 530, 531: *Ptychophallus (Ptychophallus) tristani* (RATHBUN), Holotypus. — Abb. 532, 533: *Ptychophallus (Ptychophallus) montanus convexus* (RATHBUN), Holotypus. — Abb. 534—536: *Ptychophallus (Ptychophallus) cocleensis*, nov. spec., Holotypus. — Abb. 537—539: *Ptychophallus (Ptychophallus) campylos*, nov. spec., Holotypus.

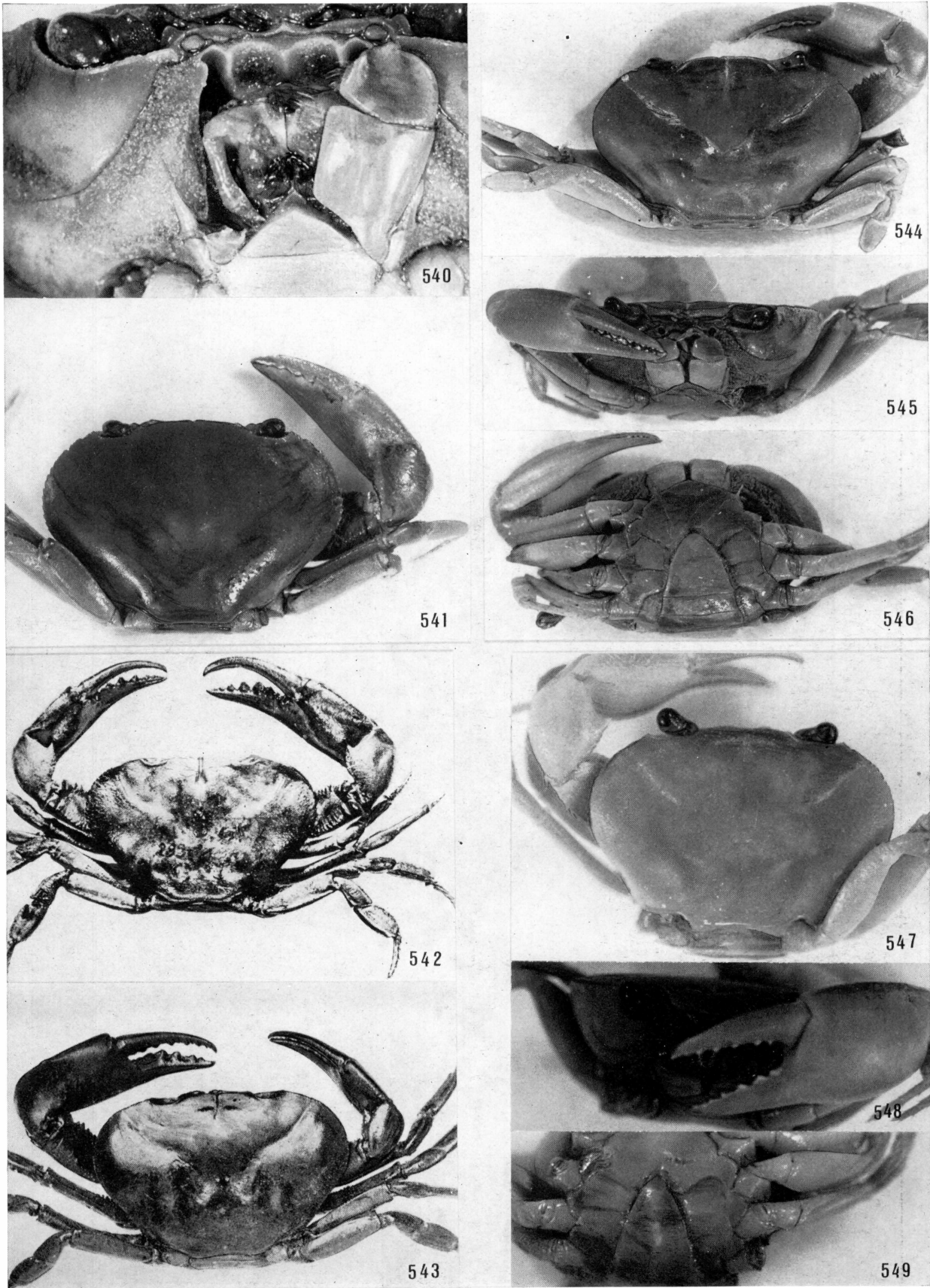


Abb. 540, 541: *Potamocarcinus (Megathelphusa) masimbari* (RATHBUN), Holotypus. — Abb. 542: *Potamocarcinus (Raddaus) bocourti complanatus* (RATHBUN), Holotypus (Aus M. RATHBUN 1905, Les Crabes d'Eau Douce). — Abb. 543: *Potamocarcinus (Raddaus) bocourti bocourti* (RATHBUN), Holotypus (Aus M. RATHBUN 1905, Les Crabes d'Eau Douce). — Abb. 544—546: *Ptychophallus (Microptychophallus) goldmanni* nov. spec., Holotypus. — Abb. 547—549: *Ptychophallus (Camptophallus) botti* SMALLEY, Paratypus.

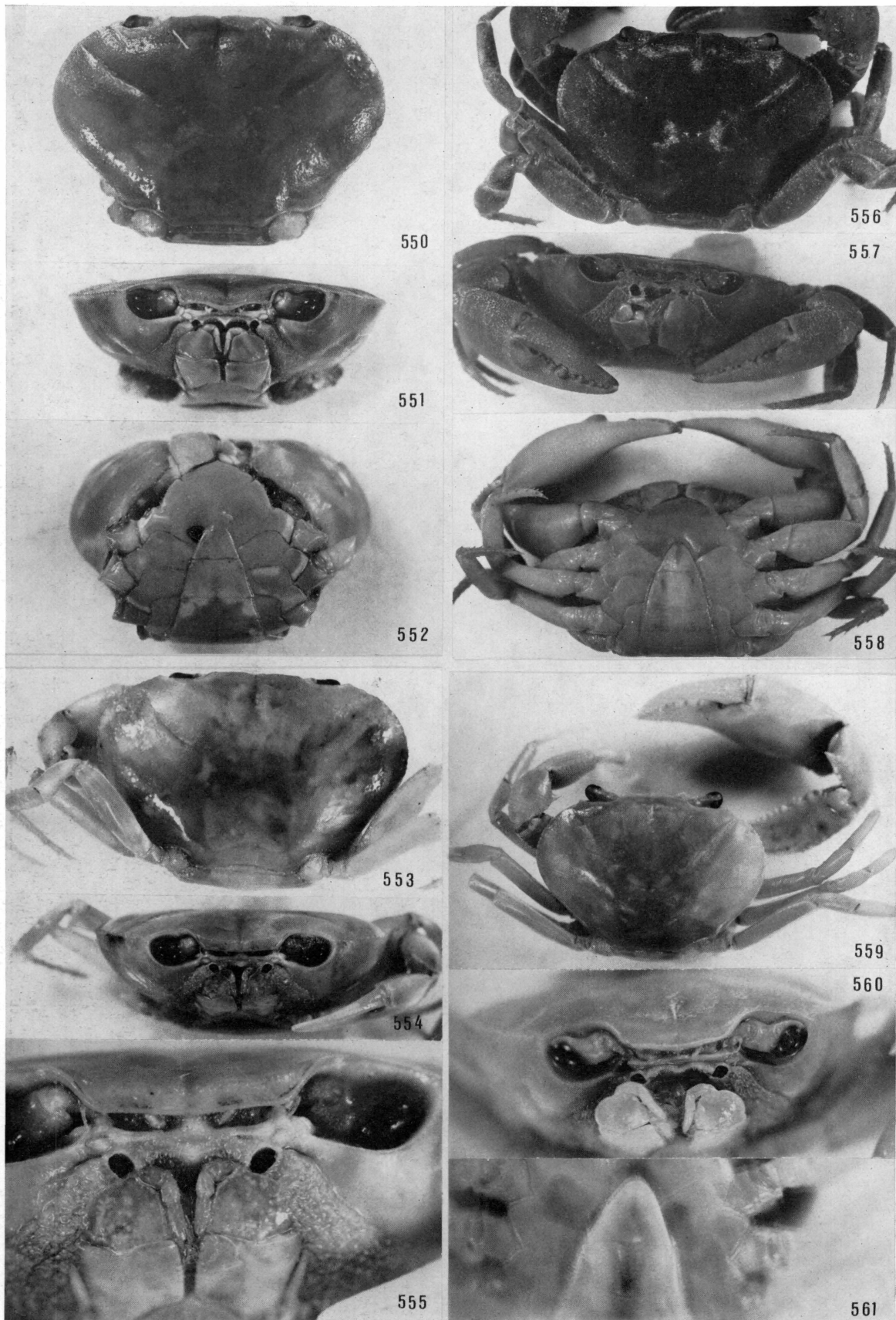


Abb. 550—552: *Ptychophallus (Ptychophallus) orestrius* SMALLEY. — Abb. 553—555: *Ptychophallus (Raddaus) bisuturalis* (RATHBUN), Holotypus. — Abb. 556—558: *Potamocarcinus (Raddaus) mertensi* (БОТТ), Holotypus. — Abb. 559—561: *Ptychophallus (Ptychophallus) campylos* nov. spec., Holotypus.



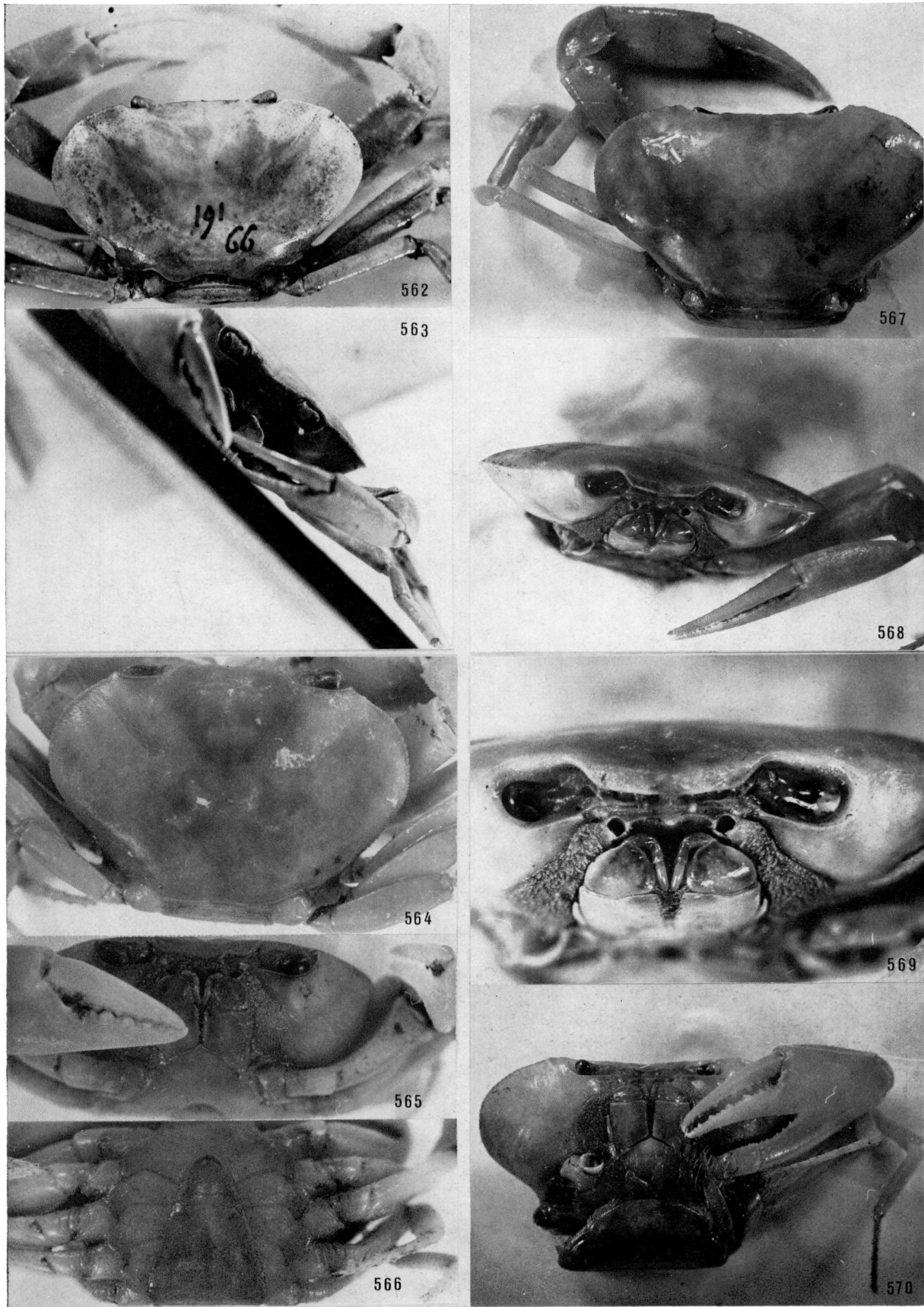


Abb. 562, 563: *Isabellagordonia (Isabellagordonia) gracilipes* (RATHBUN), Holotypus. — Abb. 564—566: *Elsalvadoria arcuata* BOTT, Holotypus. — Abb. 567—570: *Isabellagordonia (Isabellagordonia) longipes* nov. spec., Holotypus.

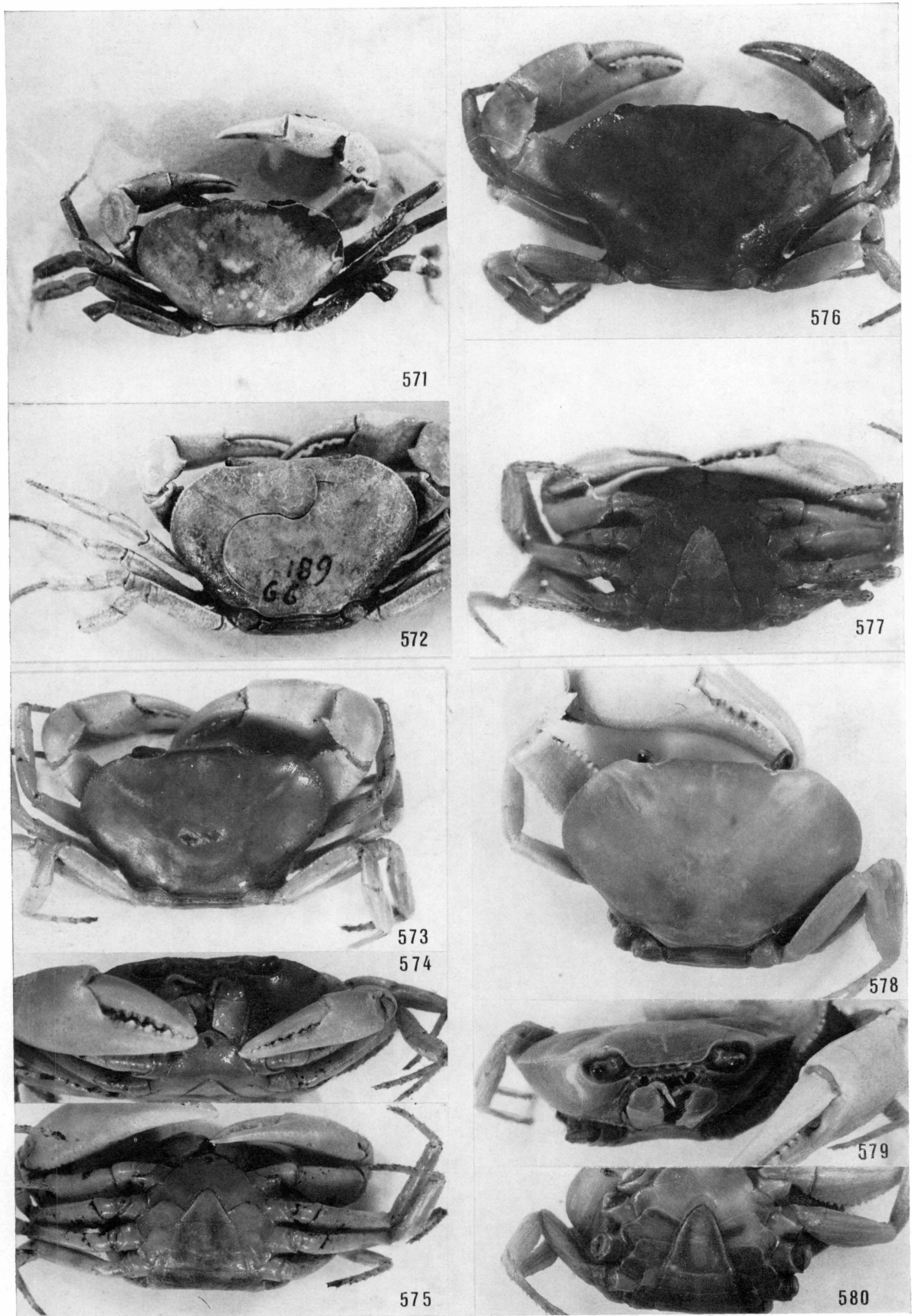


Abb. 571: *Isabellagordonia* (*Pseudospirothelphusa*) *proxima* (RATHBUN), Holotypus. — Abb. 572: *Isabellagordonia* (*Pseudospirothelphusa*) *propinqua* (RATHBUN), Holotypus. — Abb. 573—575: *Isabellagordonia* (*Pseudospirothelphusa*) *strengerae*, nov. spec., Holotypus. — Abb. 576, 577: *Elsalvadoria zurstrasseni zurstrasseni* (BOTT). — Abb. 578—580: *Elsalvadoria tomhaasi* BOTT, Holotypus.

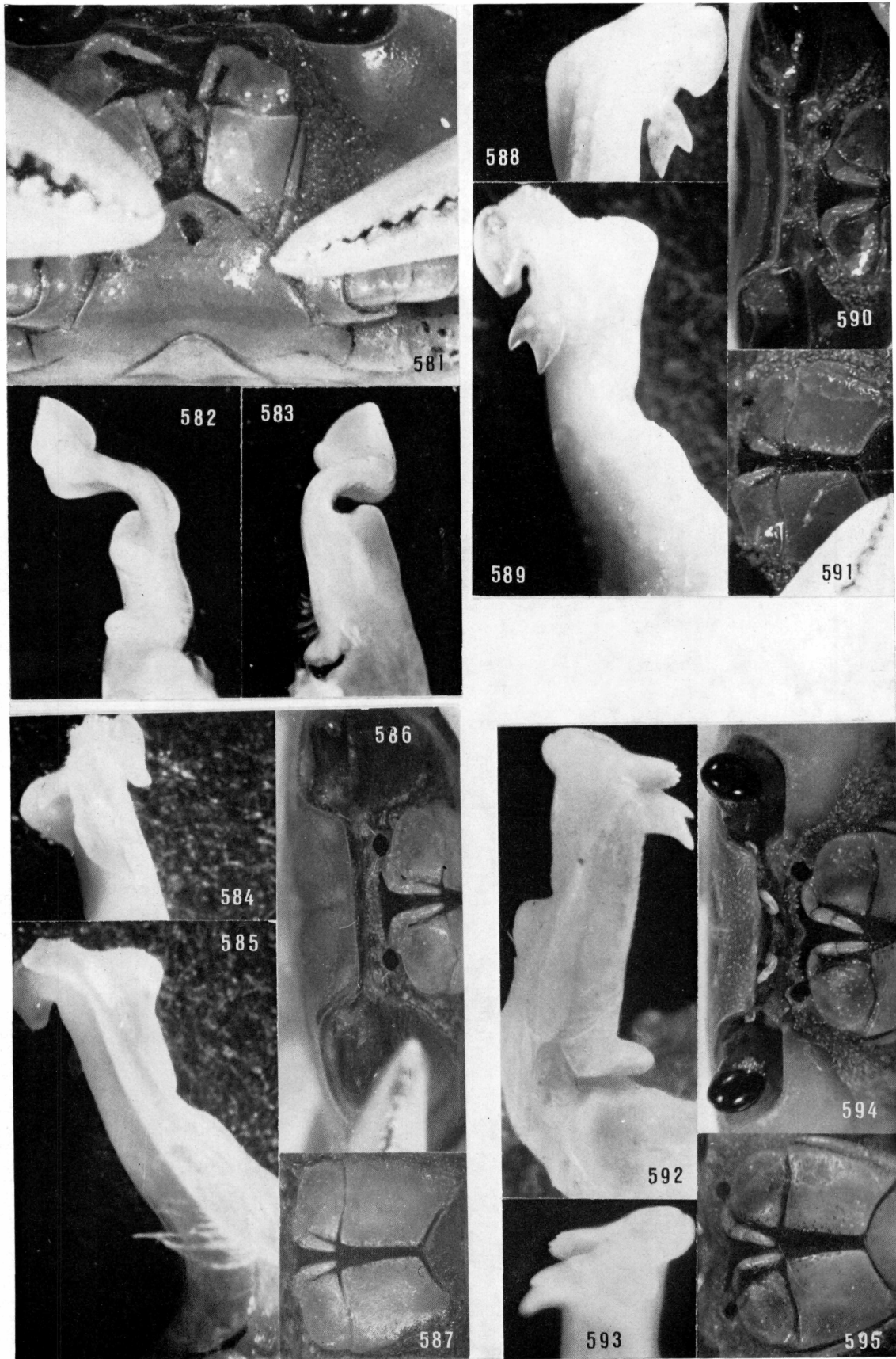


Abb. 581—583: *Isabellagordonia* (*Pseudospirothelphusa*) *strengerae* nov. spec., Holotypus. — Abb. 584—587: *Elsalvadoria zurstrasseni zurstrasseni* (BOTT). — Abb. 588—591: *Elsalvadoria zurstrasseni tridentata* (BOTT). — Abb. 592—595: *Ptychophallus* (*Camptophallus*) *botti* SMALLEY, Paratypus.

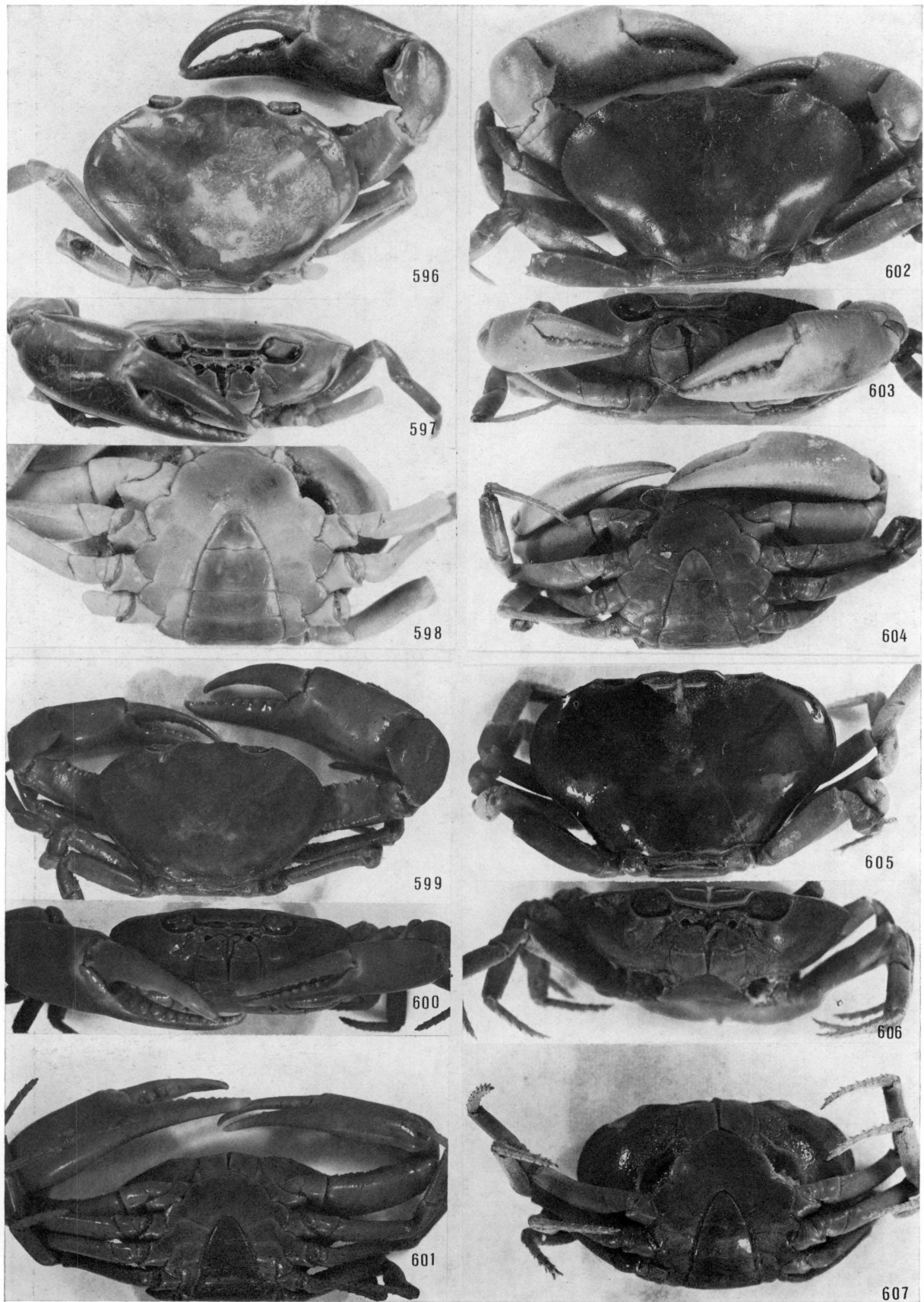


Abb. 596—598: *Pseudothelphusa (Pseudothelphusa) americana americana* SAUSSURE. — Abb. 599—601: *Pseudothelphusa (Pseudothelphusa) americana jowyi* RATHBUN, Holotypus. — Abb. 602—604: *Pseudothelphusa (Pseudothelphusa) nelsoni* RATHBUN, Holotypus. — Abb. 605—607: *Pseudothelphusa (Pseudothelphusa) terrestris* RATHBUN, Holotypus.