

Abb. 328—330: *Chaceus pearsei*, Holotypus. — Abb. 331—333: *Strengeriana fuhrmanni*, Paratypus. — Abb. 334—336: *Chaceus clausus*, Holotypus. — Abb. 337—339: *Chaceus martensii*, Holotypus.

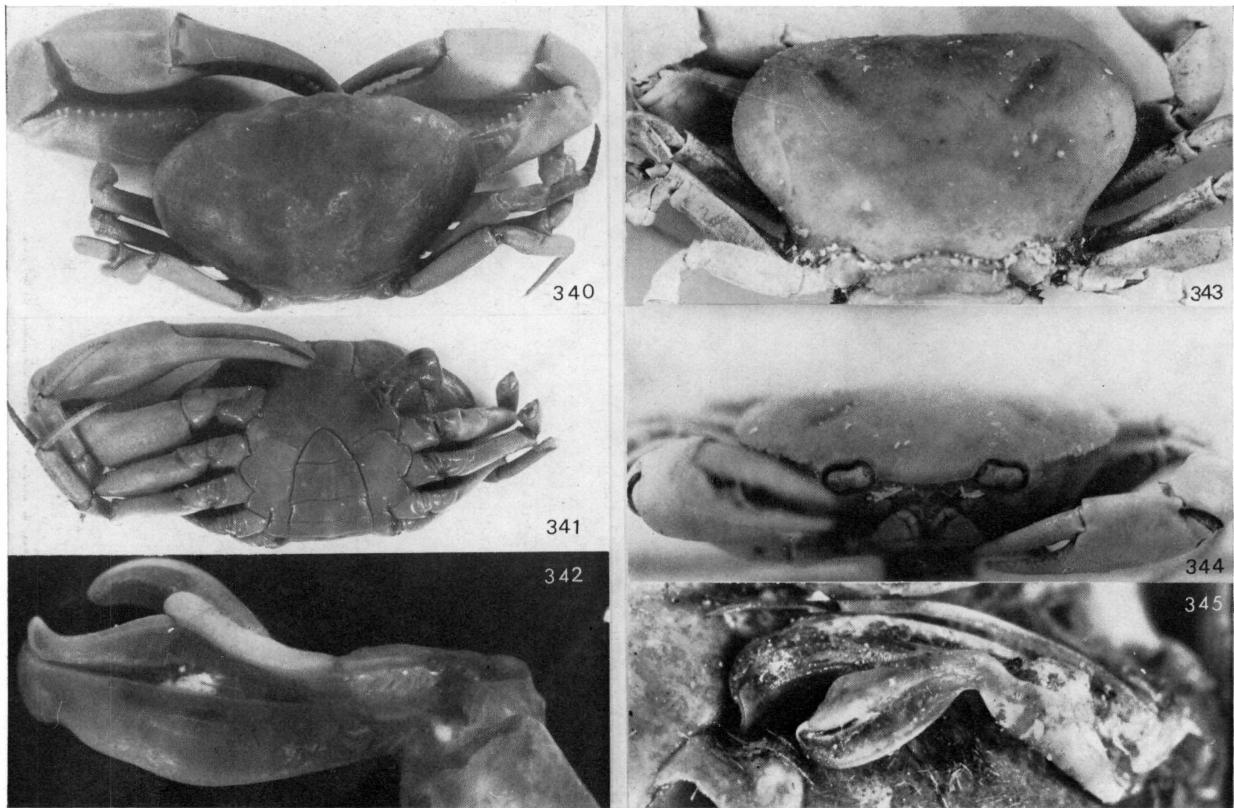


Abb. 340—342: *Hypolobocera (Neostrengeria) macropa*. — Abb. 343—345: *Hypolobocera (Neostrengeria) lindigiana lindigiana*, Holotypus und Paratypus, r.G.

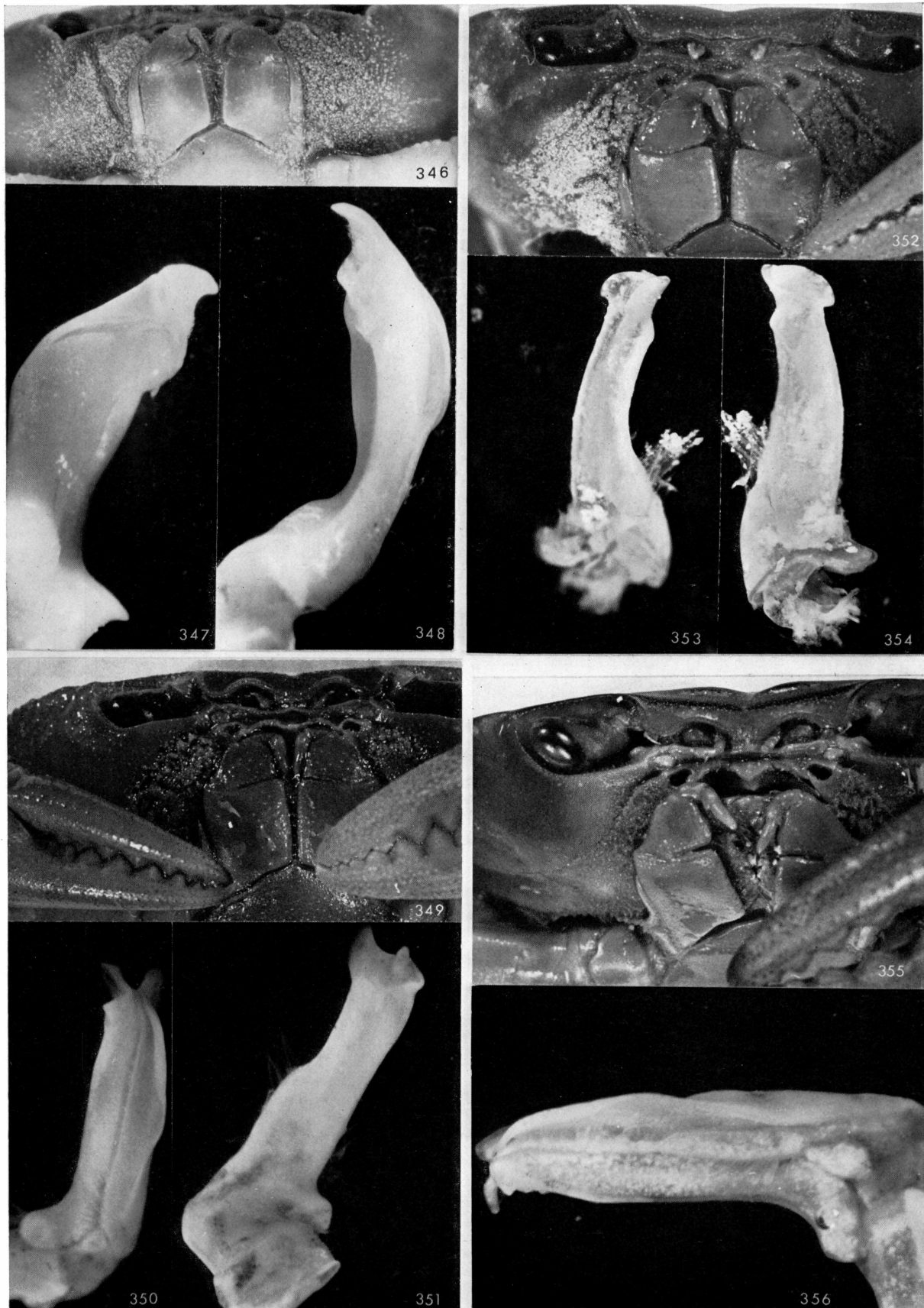


Abb. 346—348: *Strengeriana fuhrmanni*, Paratypus. — Abb. 349—351: *Chaceus pearsei*, Holotypus. — Abb. 352, 354: *Chaceus clausus*, Holotypus. — Abb. 355, 356: *Chaceus martensis*.

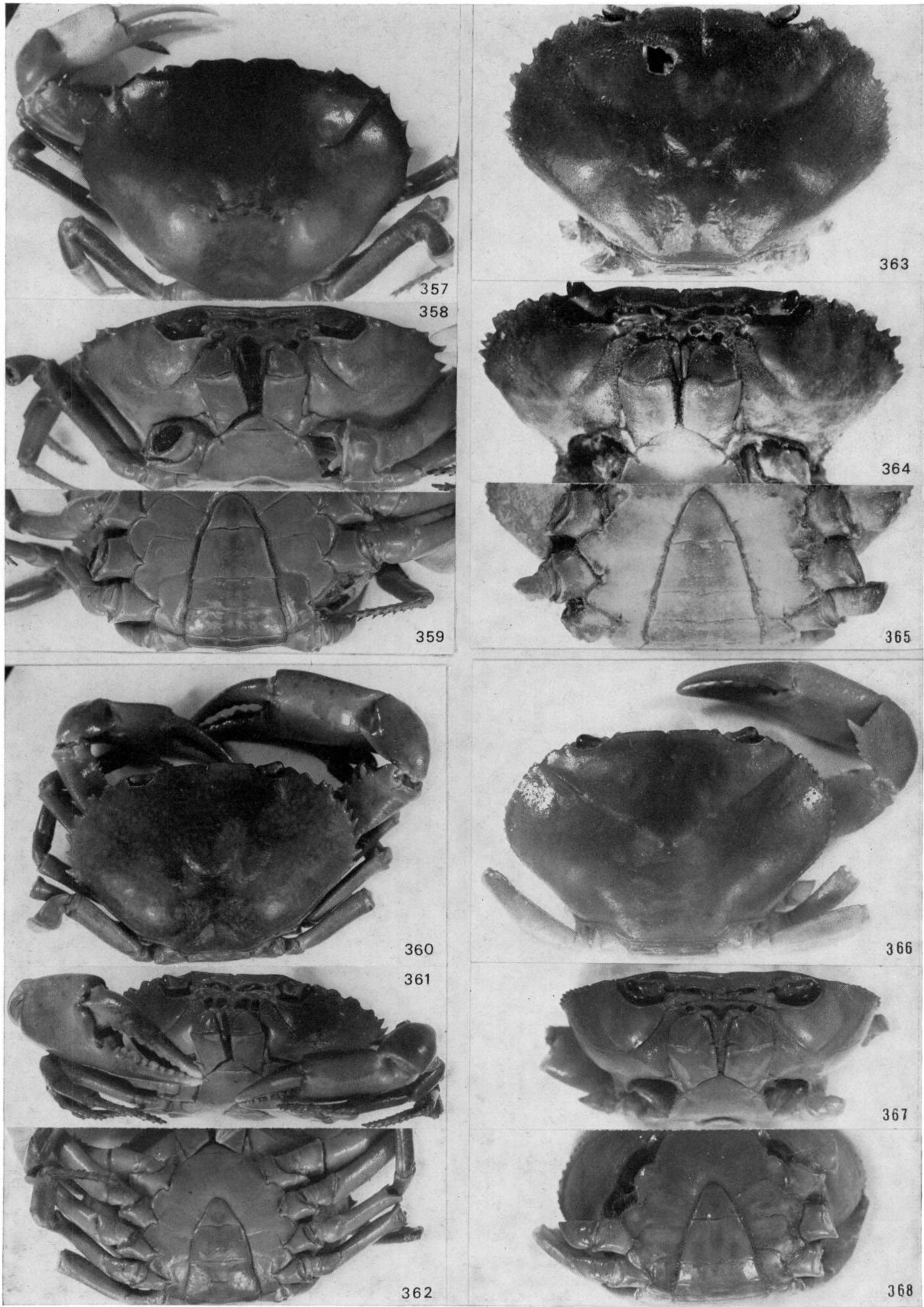


Abb. 357—359: *Potamocarcinus (Potamocarcinus) armatus* MILNE EDWARDS. — Abb. 360—362: *Potamocarcinus (Megathelphusa) nicaraguensis nicaraguensis* RATHBUN. — Abb. 363—365: *Potamocarcinus (Spirocarcinus) garthi*, nov. spec., Holotypus. — Abb. 366—368: *Potamocarcinus (Megathelphusa) richmondi* (RATHBUN), Holotypus.

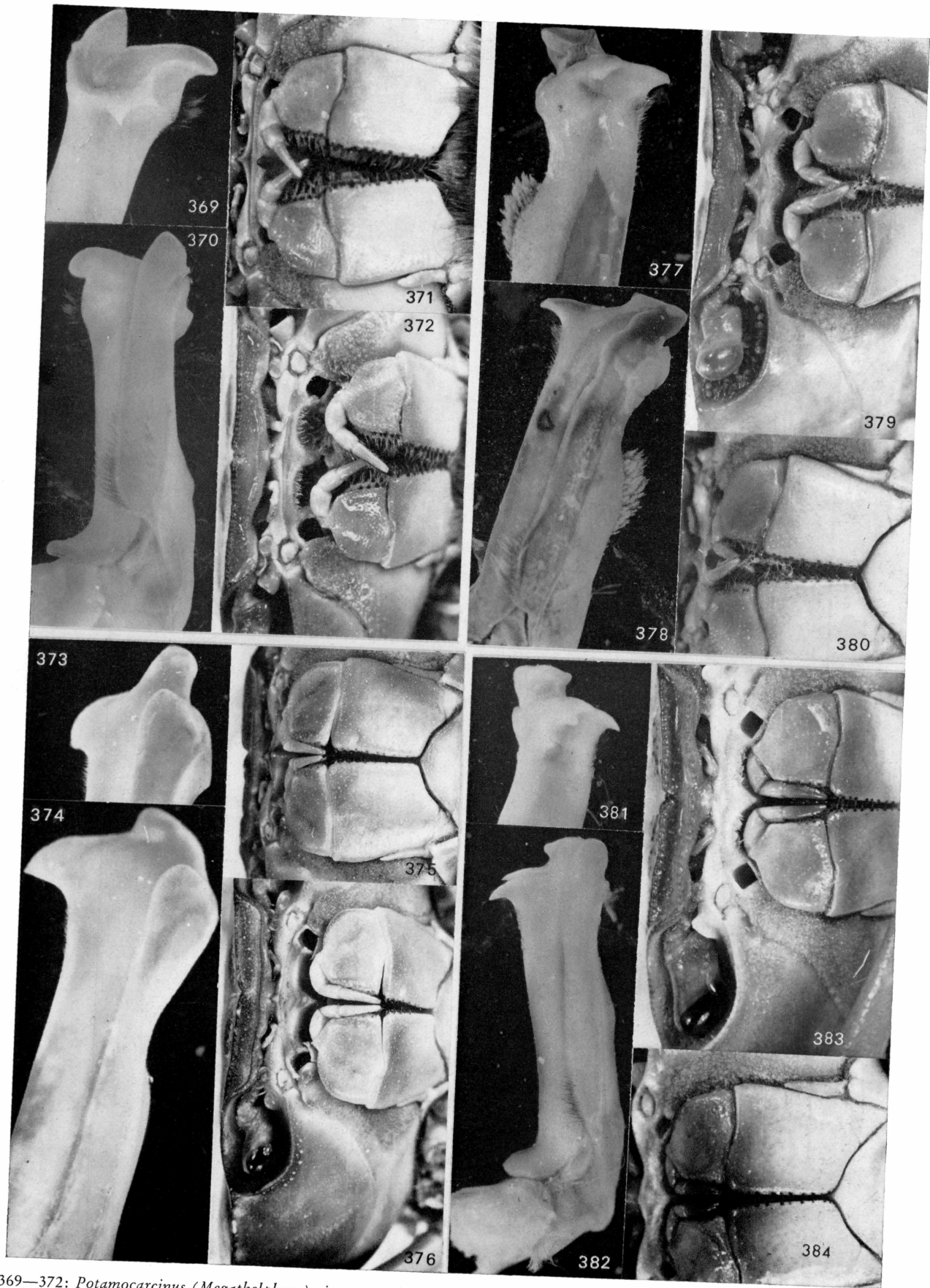


Abb. 369—372: *Potamocarcinus (Megathelphusa) nicaraguensis nicaraguensis* RATHBUN. — Abb. 373—376: *Potamocarcinus (Megathelphusa) richmondi* (RATHBUN), Holotypus. — Abb. 377—380: *Potamocarcinus (Megathelphusa) magnus magnus* (RATHBUN). — Abb. 381—384: *Potamocarcinus (Megathelphusa) magnus guatemalensis* RATHBUN.

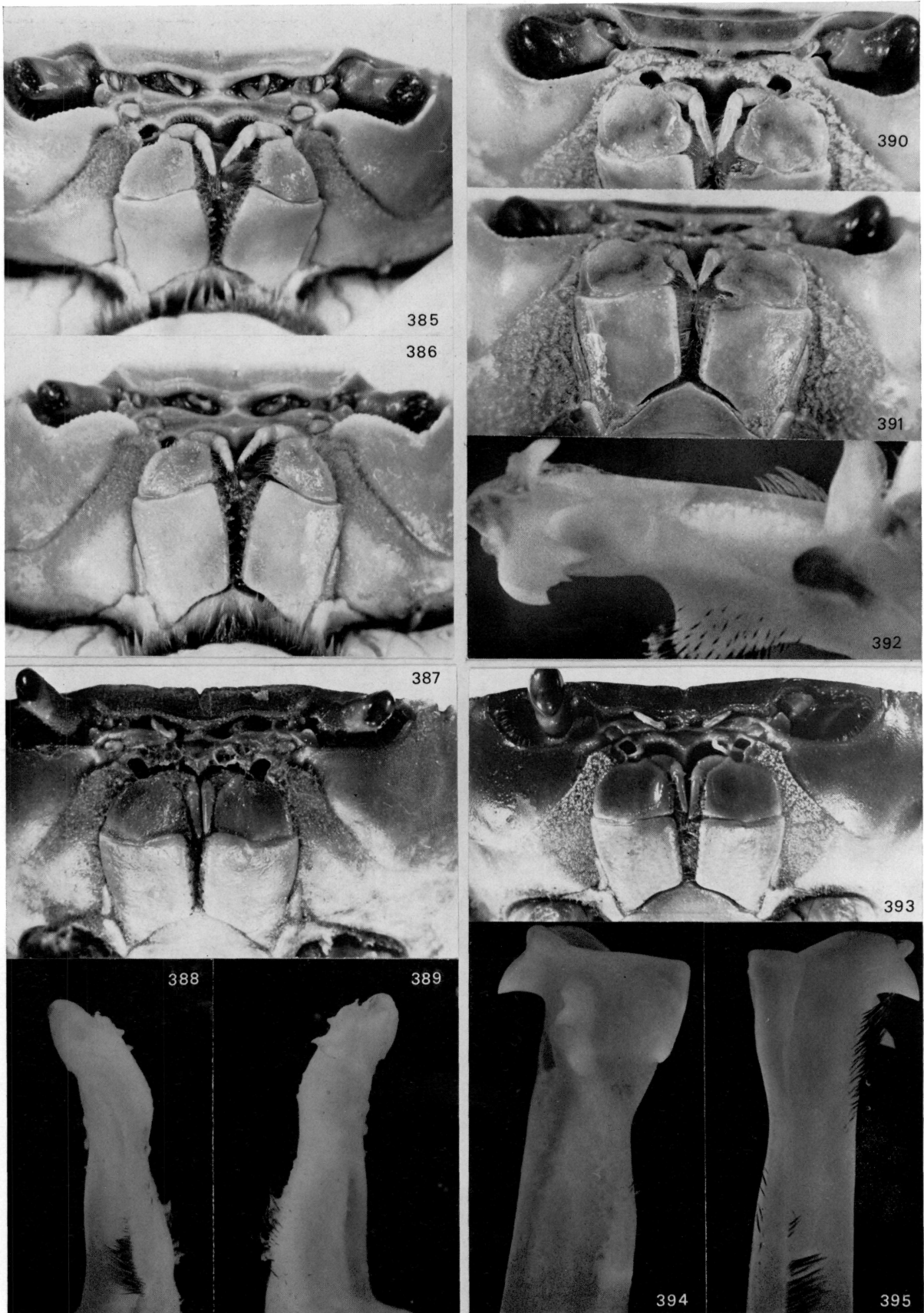


Abb. 385, 386: *Potamocarcinus (Megathelphusa) nicaraguensis aequispinosus* nov. spec., Holotypus. — Abb. 387—389: *Potamocarcinus (Spirocarcinus) garthi*, nov. spec., Holotypus. — Abb. 390—392: *Potamocarcinus (Megathelphusa) chacei* nov. spec., Holotypus. — Abb. 393—395: *Potamocarcinus (Megathelphusa) moritschi* nov. spec., Holotypus.

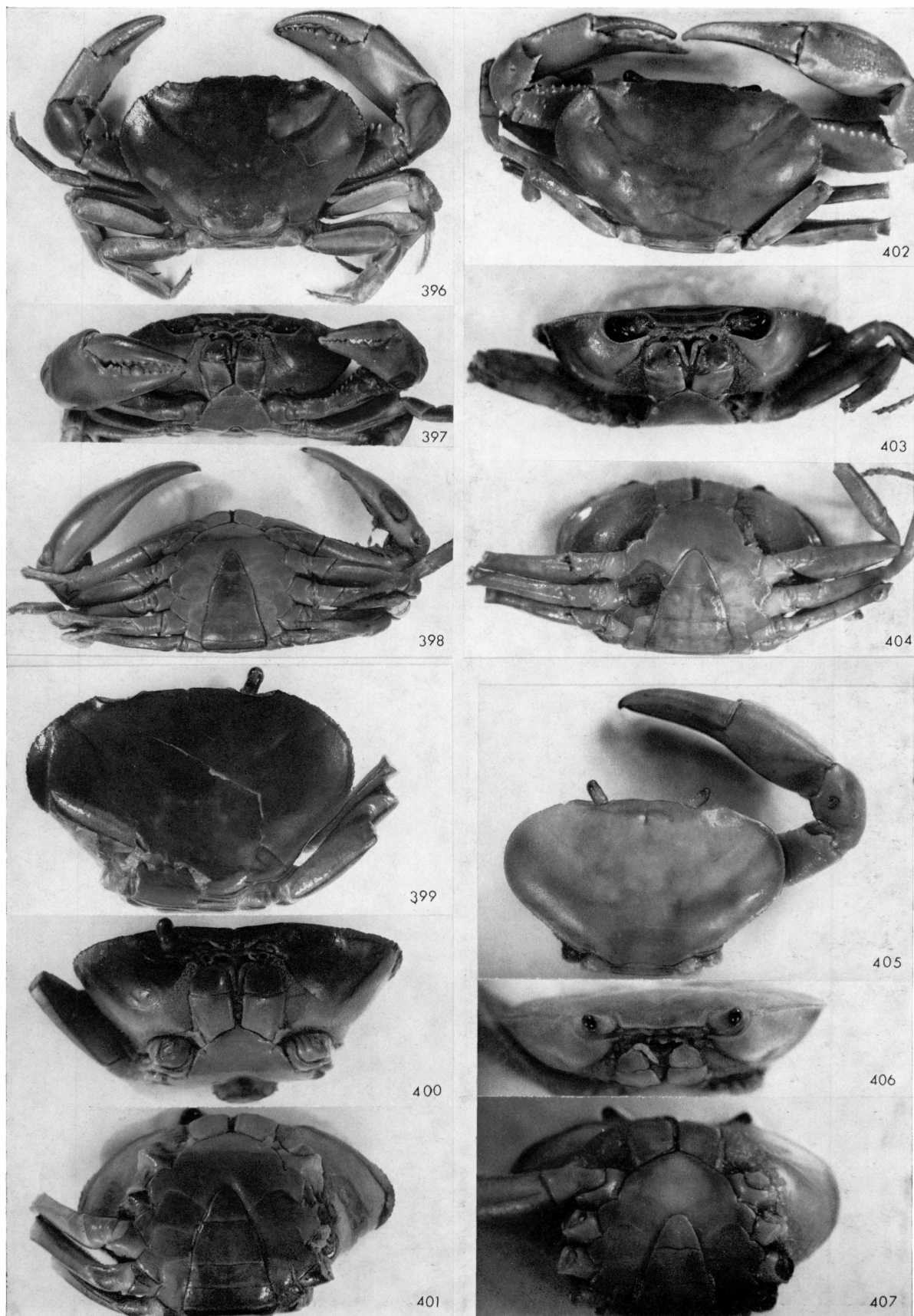


Abb. 396—398: *Potamocarcinus (Megathelphusa) magnus guatemalensis* RATHBUN, Holotypus. — Abb. 399—401: *Potamocarcinus (Megathelphusa) moritschi* nov. spec., Holotypus. — Abb. 402—404: *Potamocarcinus (Megathelphusa) chacei* nov. spec., Holotypus. — Abb. 405—407: *Potamocarcinus (Zilchia) aspoekorum* nov. spec., Holotypus.

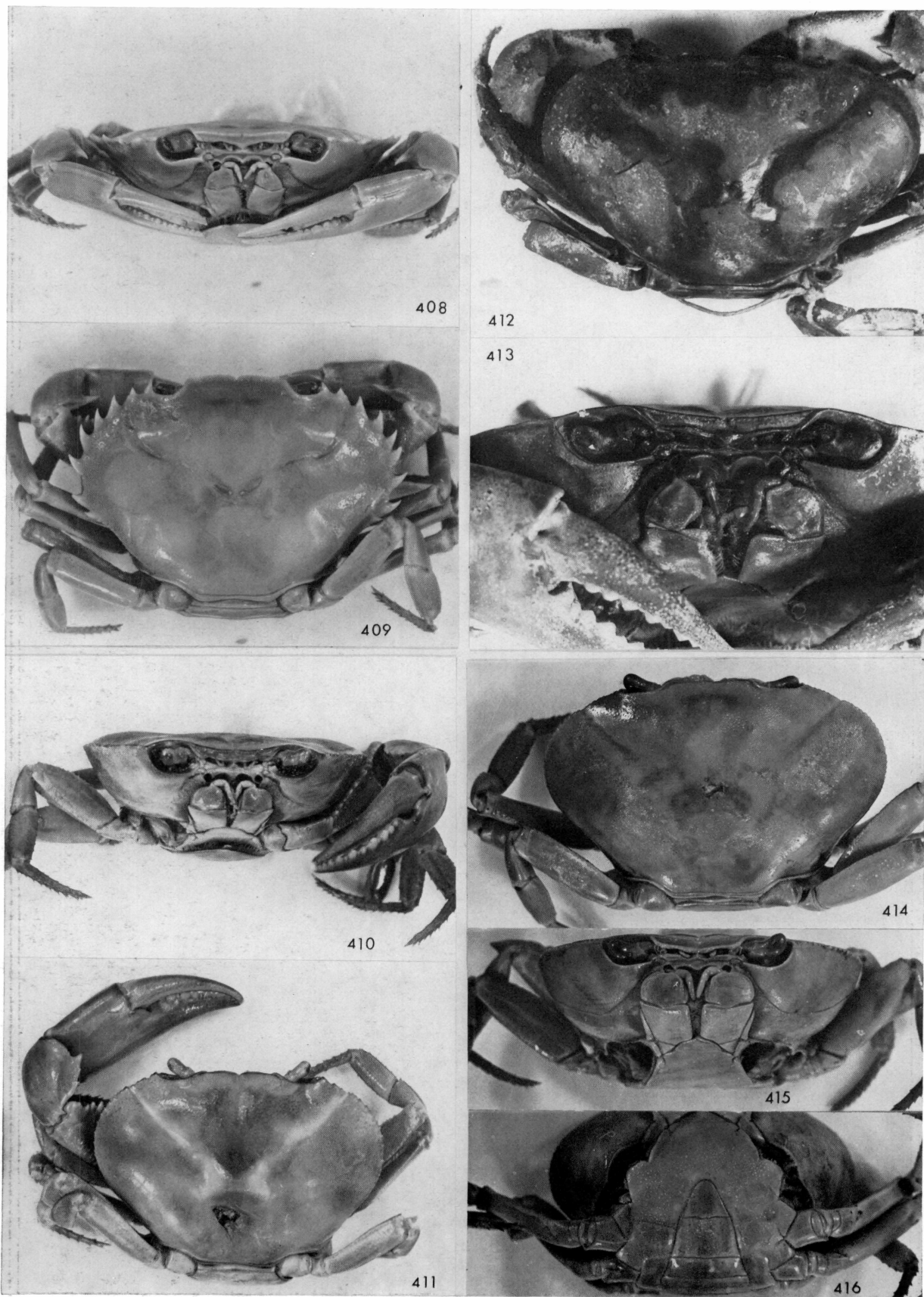


Abb. 408, 409: *Potamocarcinus (Megathelphusa) nicaraguensis aequispinosus* nov. spec., Holotypus. — Abb. 410—411: *Potamocarcinus (Megathelphusa) magnus magnus* RATHBUN. — Abb. 412, 413: *Potamocarcinus (Megathelphusa) festae* (NOBILI), Holotypus. — Abb. 414—416: *Potamocarcinus (Zilchia) maxillipes* (RATHBUN), Holotypus.





Abb. 417—420: *Potamocarcinus (Zilchia) aspoekorum* nov. spec., Holotypus. — Abb. 421—424: *Potamocarcinus (Zilchia) zilchi* (BOTT). — Abb. 425—428: *Potamocarcinus (Zilchia) maxillipes* (RATHBUN), Holotypus. — Abb. 429—432: *Achlidon (Achlidon) agrestis* (RATHBUN), Holotypus.

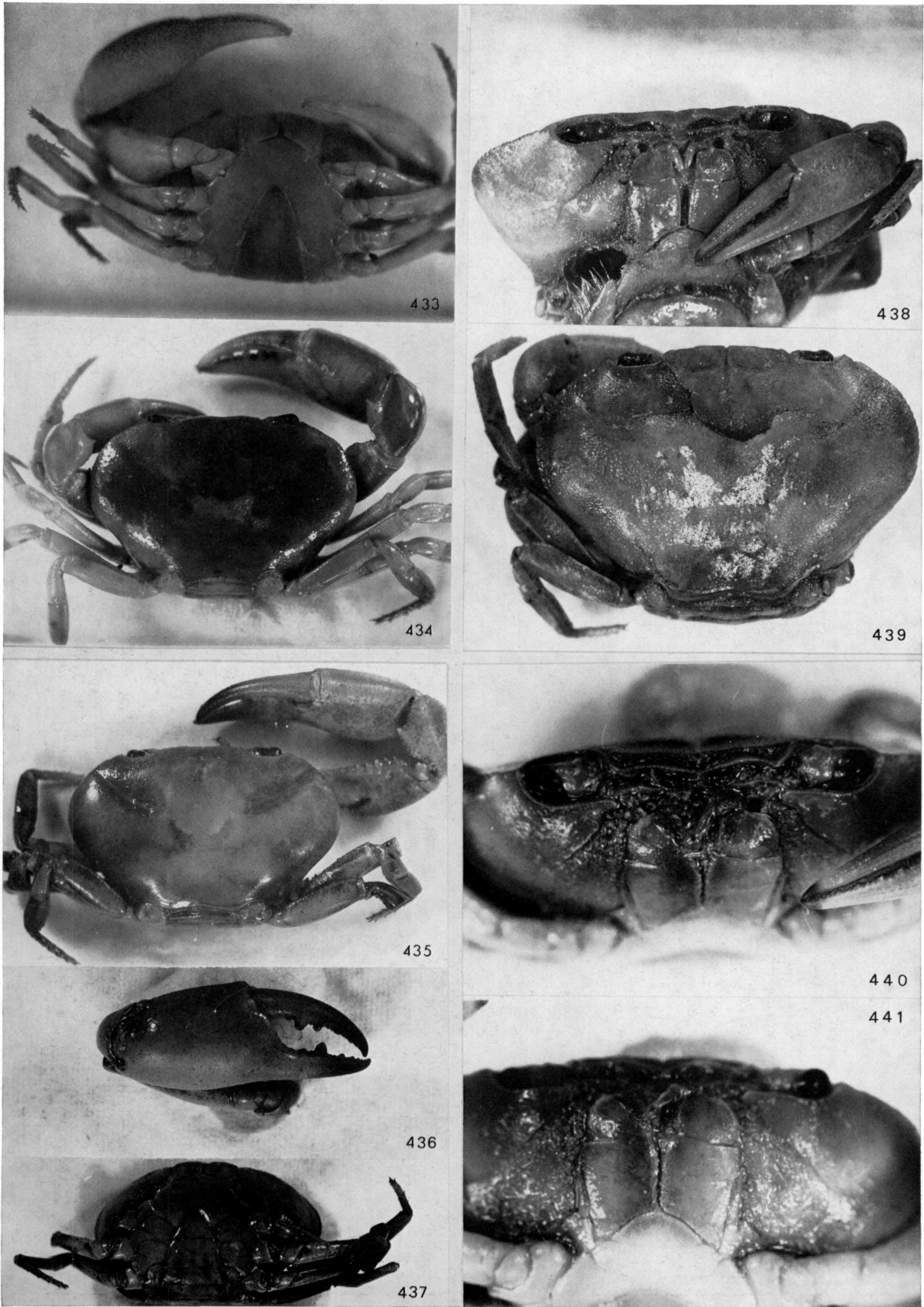


Abb. 433, 434: *Potamocarcinus (Zilchia) zilchi* (BOTT). — Abb. 435—437: *Achlidon (Achlidon) agrestis* (RATHBUN), Holotypus. — Abb. 438—441: *Achlidon (Allacanthos) pittieri* (RATHBUN), Holotypus.

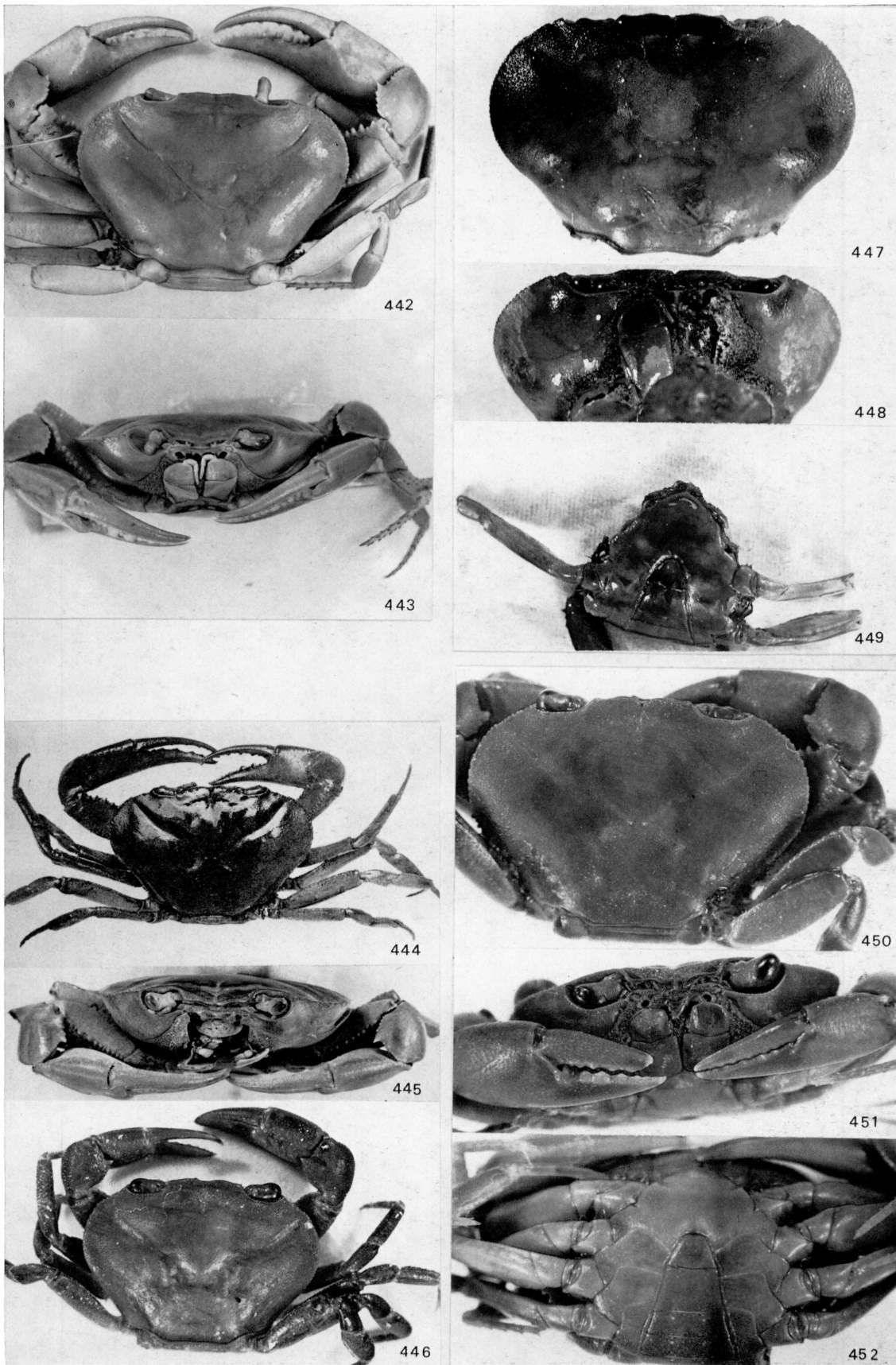


Abb. 442—443: *Potamocarcinus (Raddaus) bocourti bocourti* (RATHBUN). — Abb. 444: *Potamocarcinus (Raddaus) bocourti grillator* (RATHBUN), Holotypus (Aus: RATHBUN 1905, Les Crabes d'Eau Douce). — Abb. 445, 446: *Potamocarcinus (Raddaus) bocourti grillator* (RATHBUN). — 447—449: *Potamocarcinus (Raddaus) bocourti similis* (RATHBUN), Holotypus. — Abb. 450—452: *Potamocarcinus (Raddaus) parasilbi* BOTT, Holotypus.

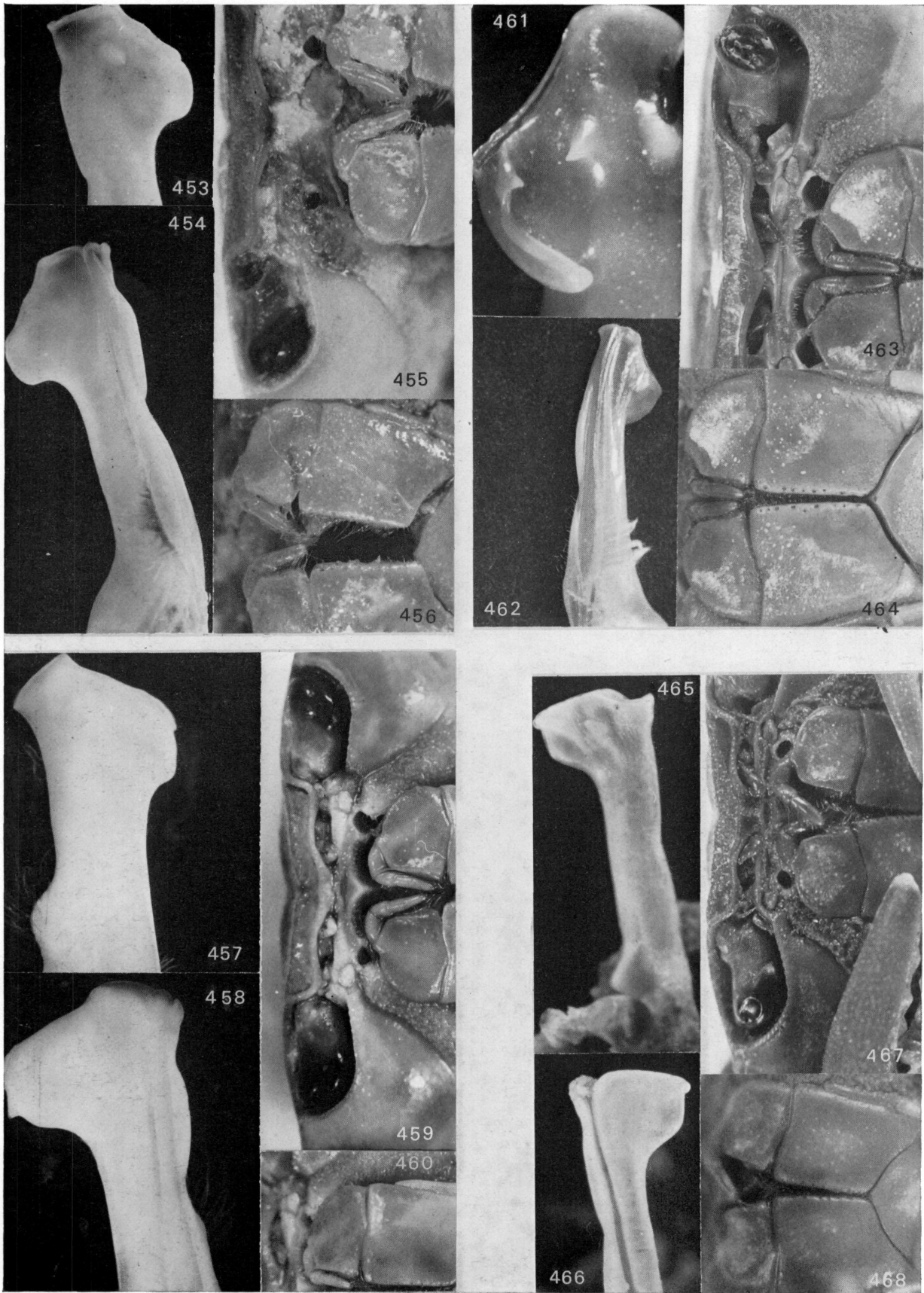


Abb. 453—456: *Potamocarcinus (Raddaus) bocourti similis* (RATHBUN), Holotypus. — Abb. 457—460: *Potamocarcinus (Raddaus) orestrius* (SMALLEY). — Abb. 461—464: *Potamocarcinus (Raddaus) tuberculatus* (RATHBUN). — Abb. 465—468: *Potamocarcinus (Raddaus) parazilchi* BOTT, Holotypus.