

Abb. 204, 205: *Hypolobocera (Hypolobocera) monticola steindachneri*, Holotypus. — Abb. 206, 207: *Hypolobocera (Hypolobocera) monticola* s.str., Holotypus. — Abb. 208—210: *Hypolobocera (Hypolobocera) bowvieri angulata* Holotypus. — Abb. 211—213: *Hypolobocera (Hypolobocera) canaensis*, Holotypus.

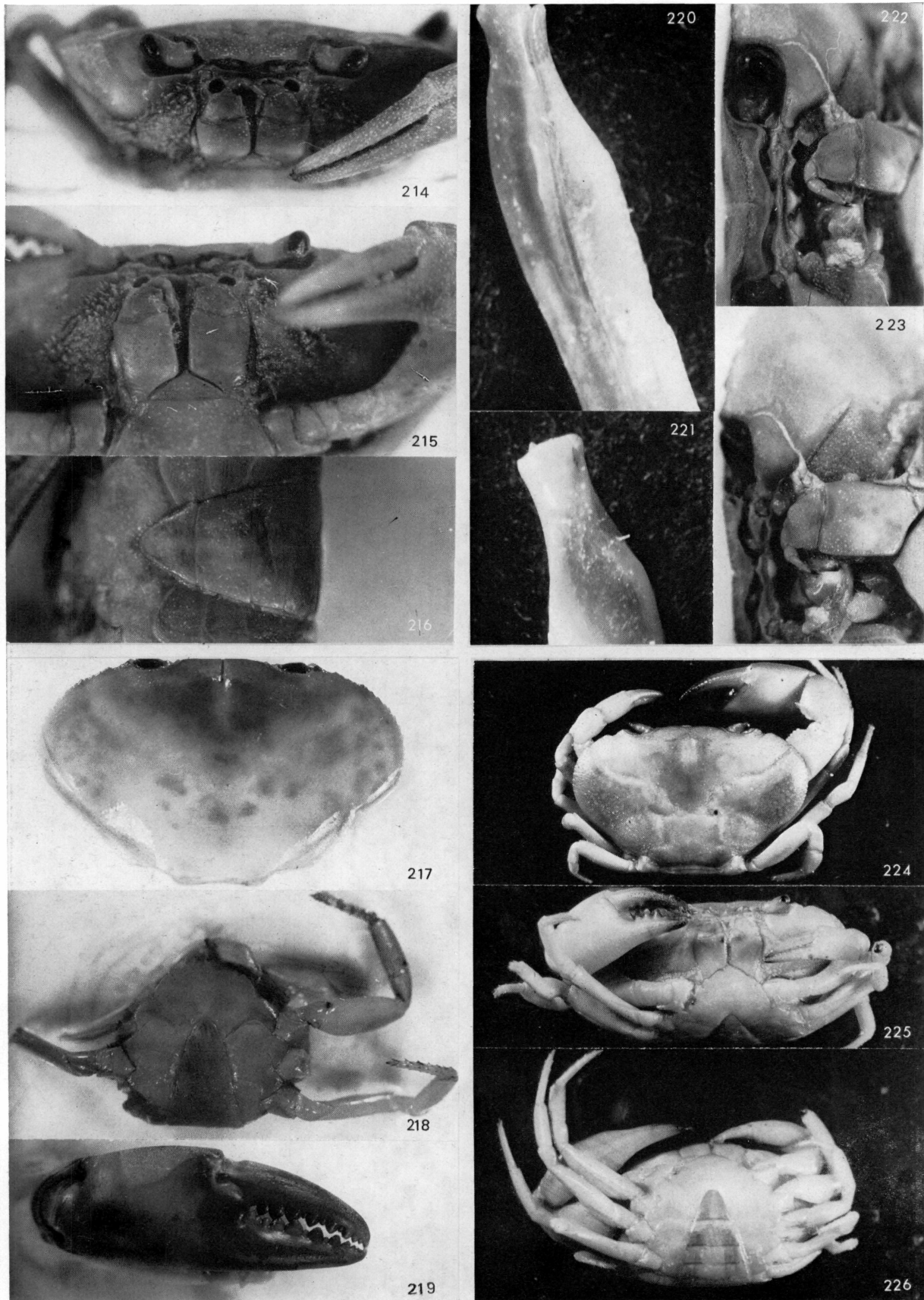


Abb. 214—216: *Hypolobocera (Hypolobocera) plana orientalis*, Holotypus. — Abb. 217—223: *Hypolobocera (Hypolobocera) gibberimana*, Holotypus. — Abb. 224—226: *Hypolobocera (Hypolobocera) dubia* (vom Rio Tamana).

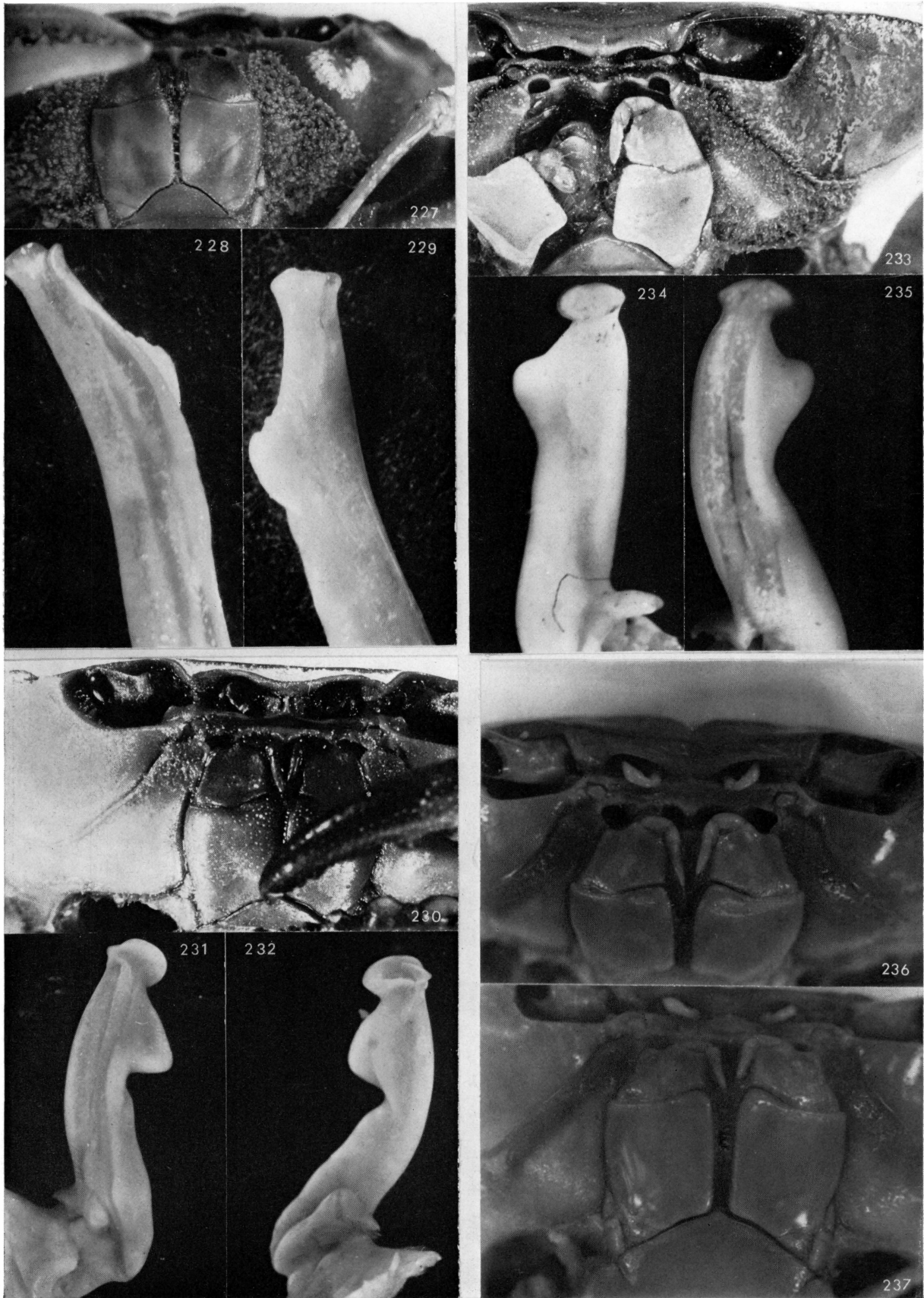


Abb. 227—229: *Hypolobocera (Hypolobocera) monticola steindachneri* Holotypus. — Abb. 230—232: *Hypolobocera (Hypolobocera) dubia*. — Abb. 233—235: *Hypolobocera (Hypolobocera) smalleyi*, Holotypus. — Abb. 236, 237: *Hypolobocera (Hypolobocera) dubia* (von Condoto).



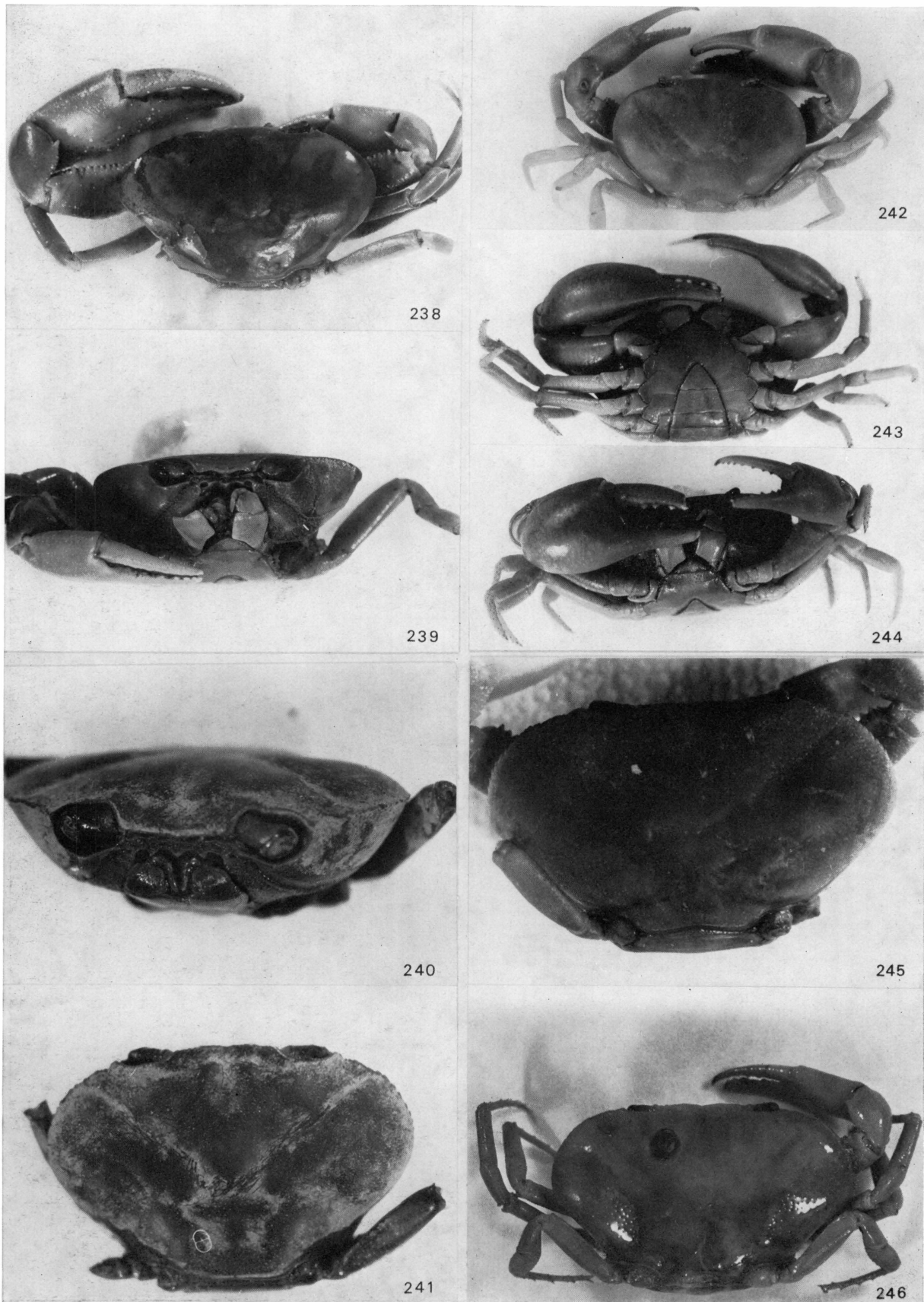


Abb. 238, 239: *Hypolobocera (Hypolobocera) smalleyi*, Holotypus. — Abb. 240, 241: *Hypolobocera (Hypolobocera) buenaventurensis*, Holotypus. — Abb. 242—244: *Hypolobocera (Hypolobocera) martelathami*, Holotypus. — Abb. 245, 246: *Hypolobocera (Hypolobocera) nobilii*, Holotypus.



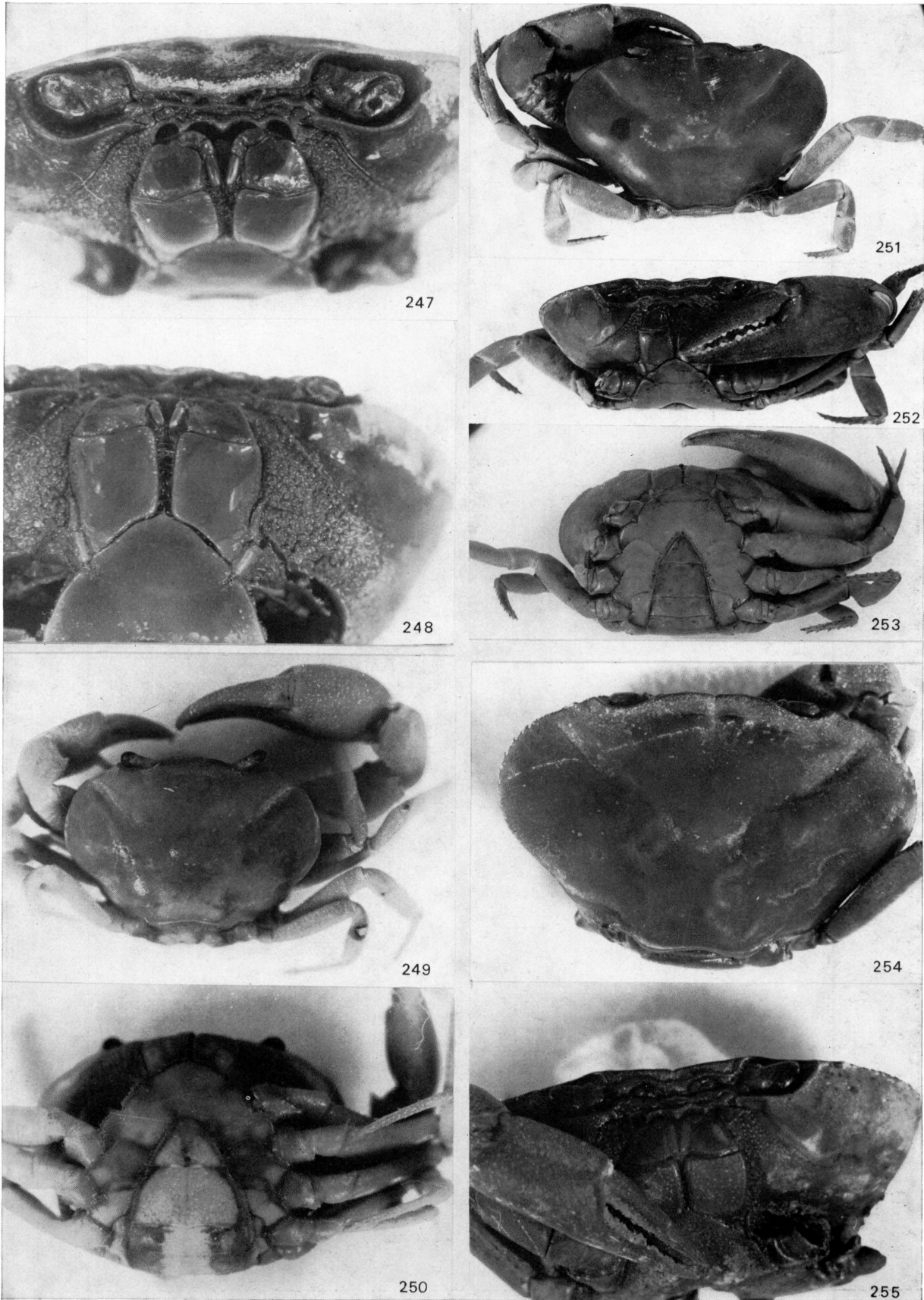


Abb. 247, 248: *Hypolobocera (Hypolobocera) buenaventurensis*, Holotypus. — Abb. 249, 250: *Hypolobocera (Moritschus) ecuadorensis* ♂. — Abb. 251—253: *Hypolobocera (Hypolobocera) caputii eigenmanni*, Holotypus. — Abb. 254, 255: *Hypolobocera (Hypolobocera) caputii caputii*, Holotypus.

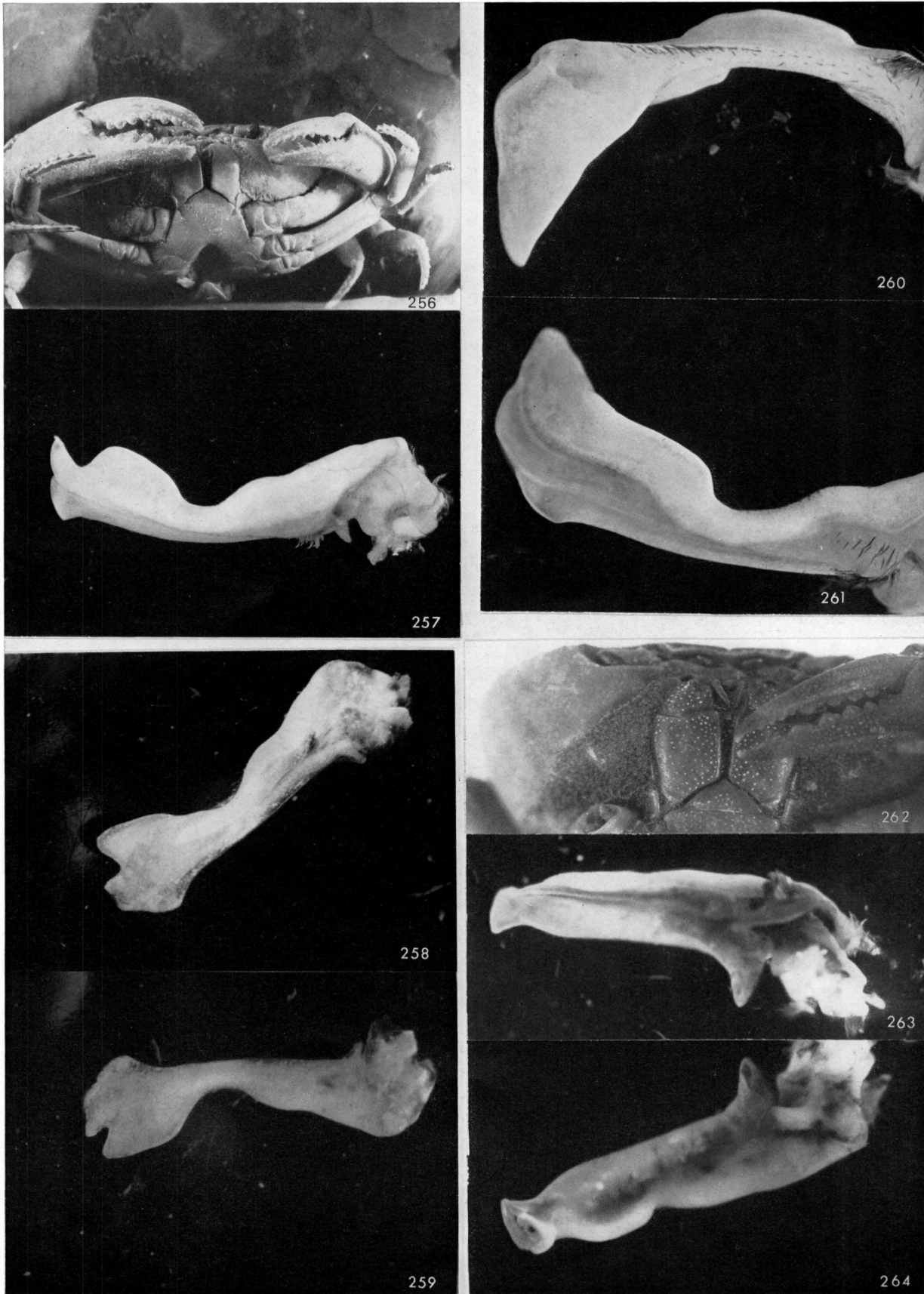


Abb. 256, 257: *Hypolobocera (Hypolobocera) capitii gracilignatha*, Holotypus. — Abb. 258, 259: *Hypolobocera (Hypolobocera) henrici przewiana*, Holotypus. — Abb. 260, 261: *Hypolobocera (Hypolobocera) henrici henrici*. — Abb. 262—264: *Hypolobocera (Hypolobocera) aequatorialis nigra*, Holotypus.

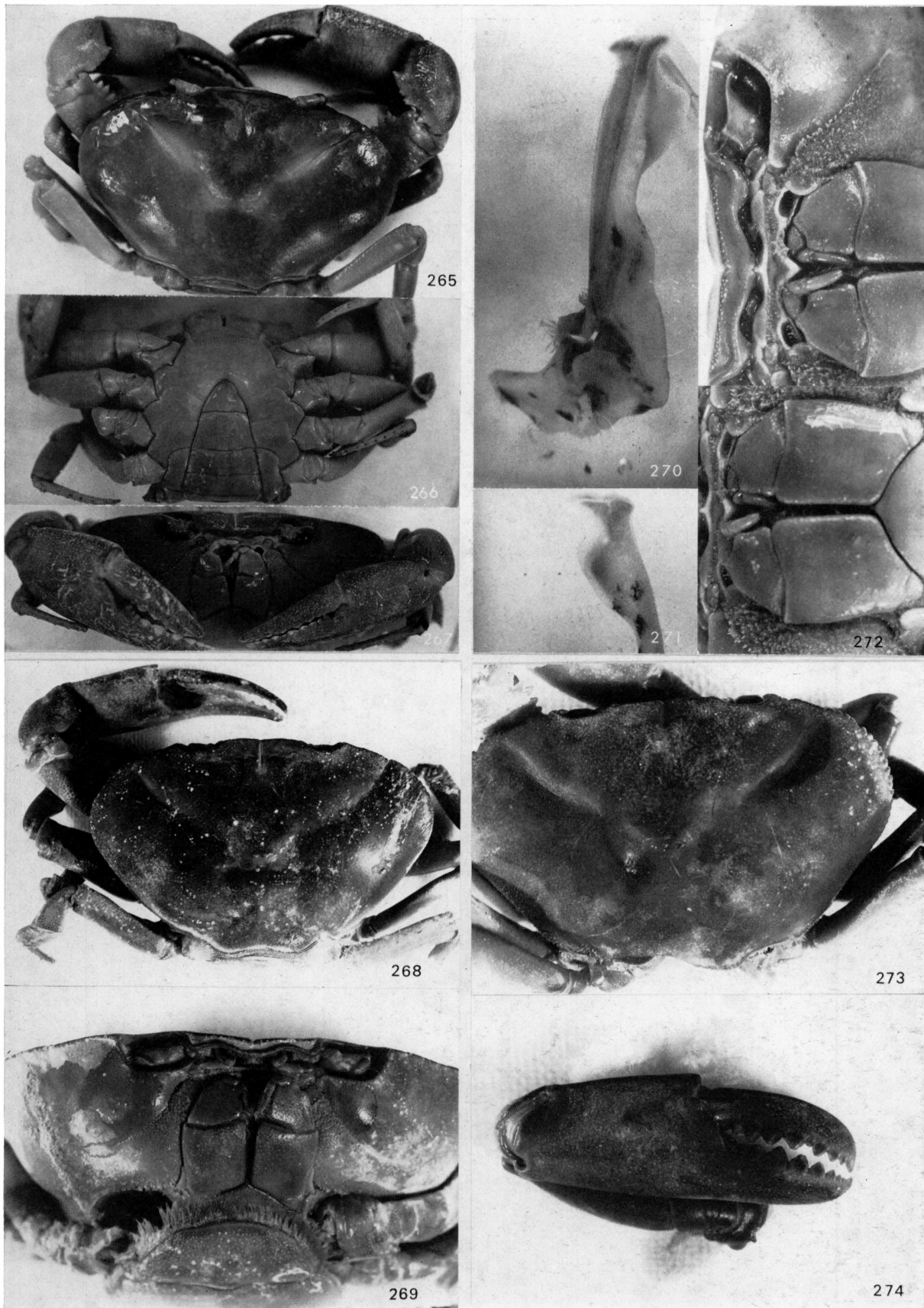


Abb. 265—267: *Hypolobocera (Hypolobocera) aequatorialis aequatorialis*, Holotypus. — Abb. 268, 269: *Hypolobocera (Hypolobocera) henrici henrici*, Holotypus. — Abb. 270—272: *Hypolobocera (Hypolobocera) capitii capitii* (von Cuteroo). — Abb. 273, 274: *Hypolobocera (Hypolobocera) conradi conradi*, Holotypus.



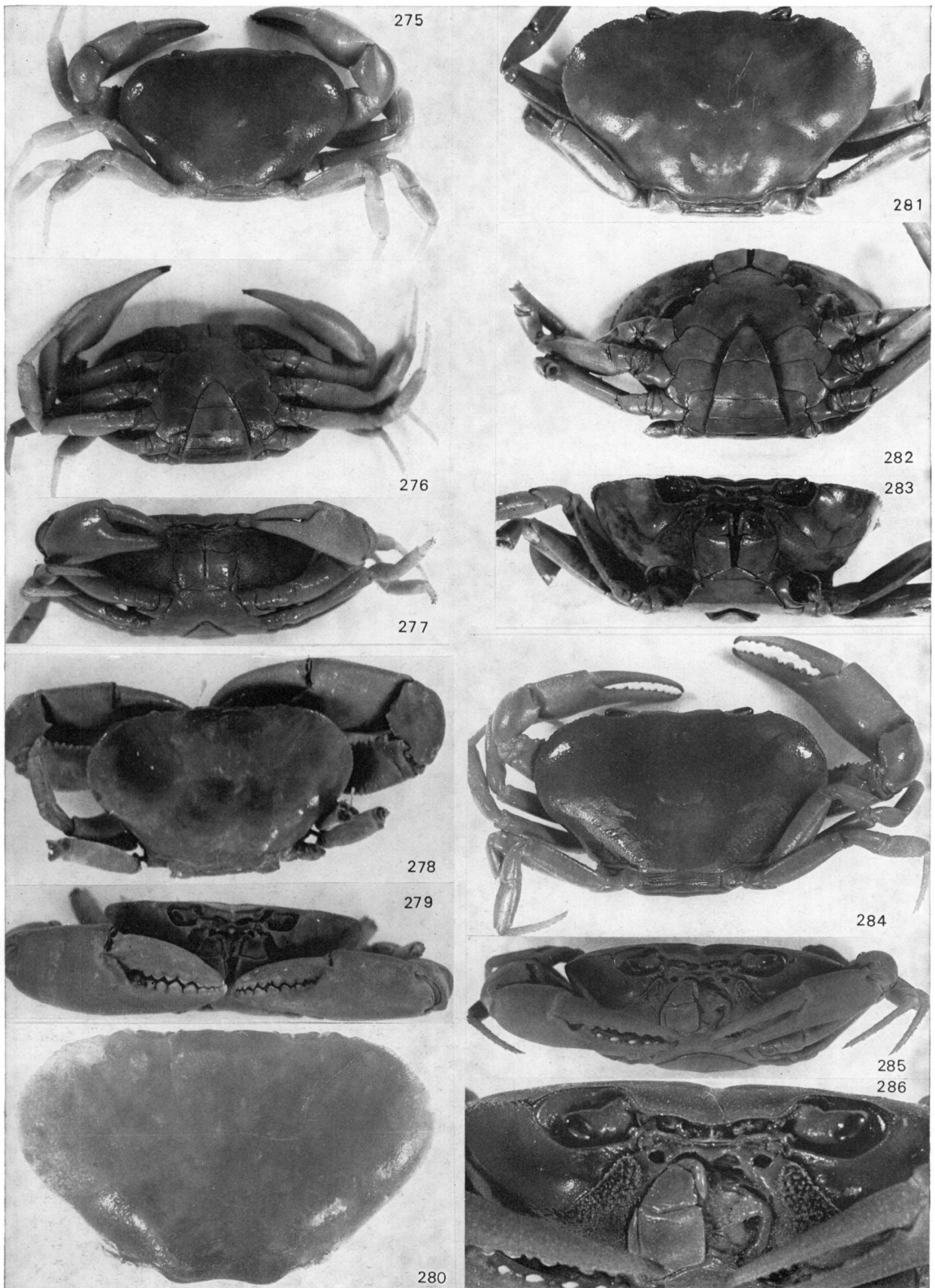


Abb. 275—277: *Hypolobocera (Hypolobocera) plana plana*. — Abb. 278—280: *Hypolobocera (Hypolobocera) bowvieri bowvieri*, Holotypus. — Abb. 281—283: *Hypolobocera (Hypolobocera) conradi latipenis*, Holotypus. — Abb. 284—286: *Chaceus ruthveni*, Holotypus.

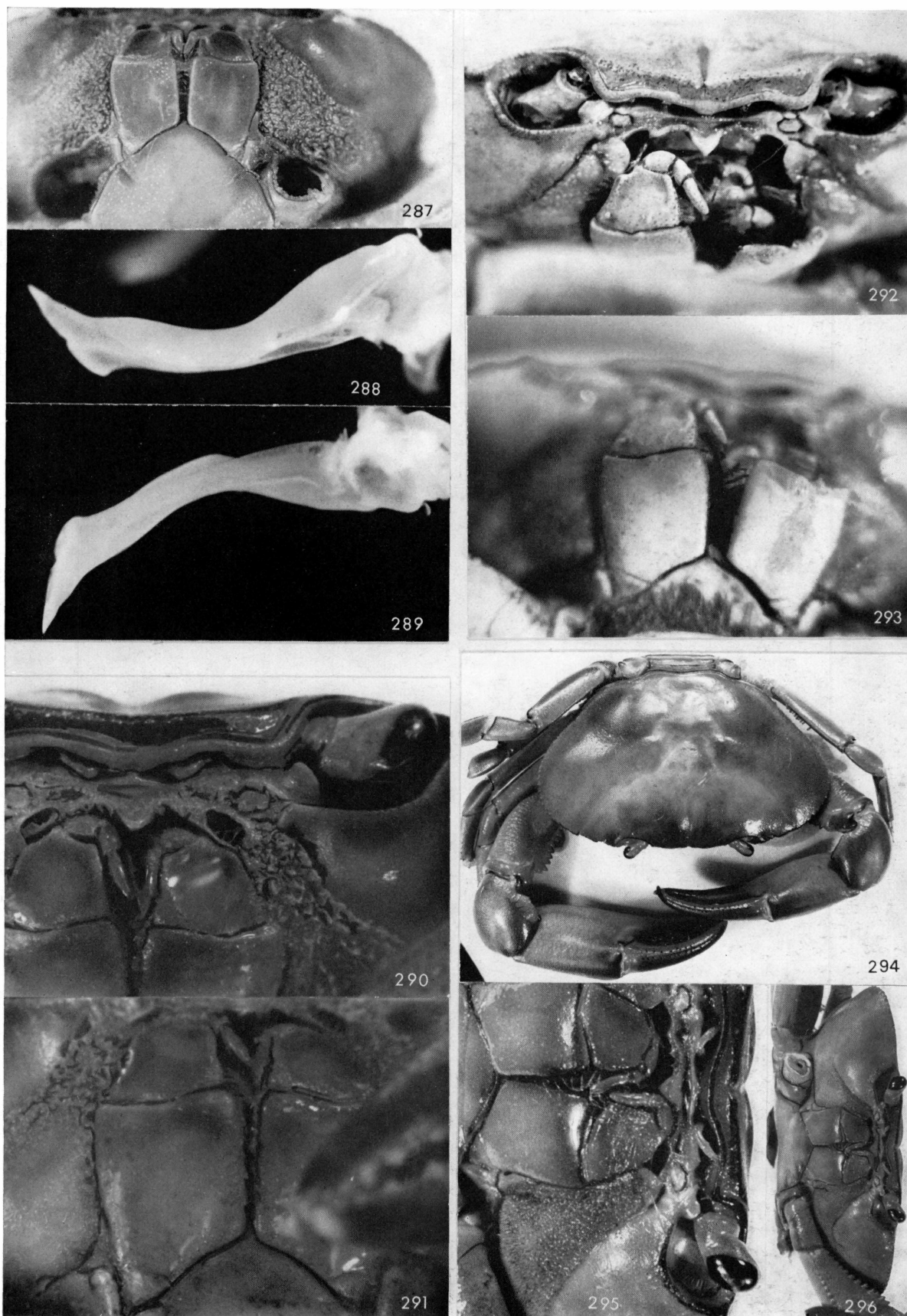


Abb. 287—289.: *Hypolobocera* (*Hypolobocera*) *guayaquilensis rathbuni*, Holotypus. — Abb. 290, 291: *Hypolobocera* (*Hypolobocera*) *caputii eigenmanni*, Holotypus. — Abb. 292, 293: *Hypolobocera* (*Hypolobocera*) *chilensis*, Allotypus. — Abb. 294—296: *Hypolobocera* (*Hypolobocera*) *henrici henrici* (von Conception).

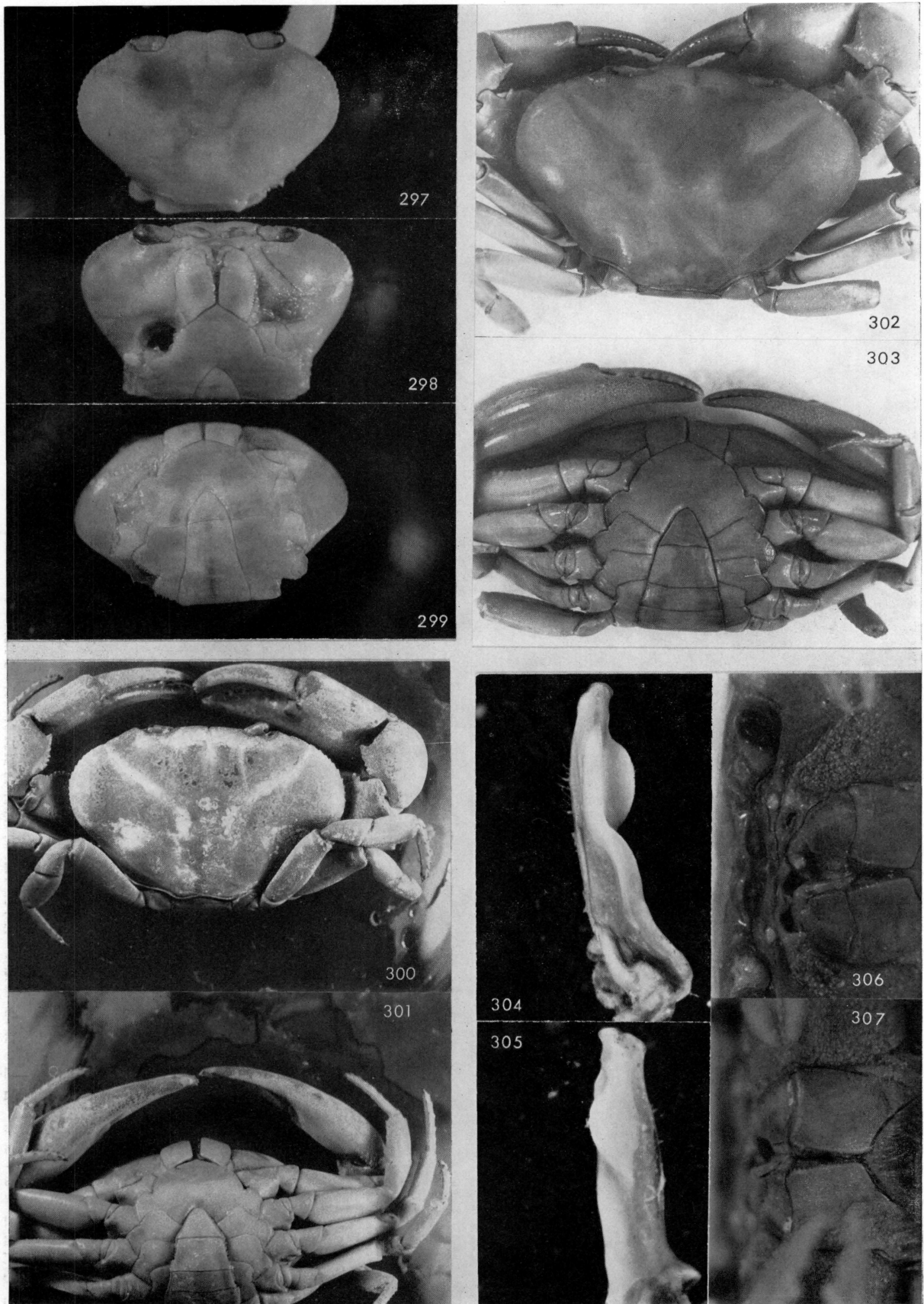


Abb. 297—299: *Hypolobocera (Hypolobocera) henrici peruviana*, Holotypus. — Abb. 300, 301: *Hypolobocera caputii gracilignatha*, Holotypus. — Abb. 302, 303: *Hypolobocera caputii caputii* von Cuteroo. — Abb. 304—307: *Hypolobocera (Hypolobocera) plana plana*.



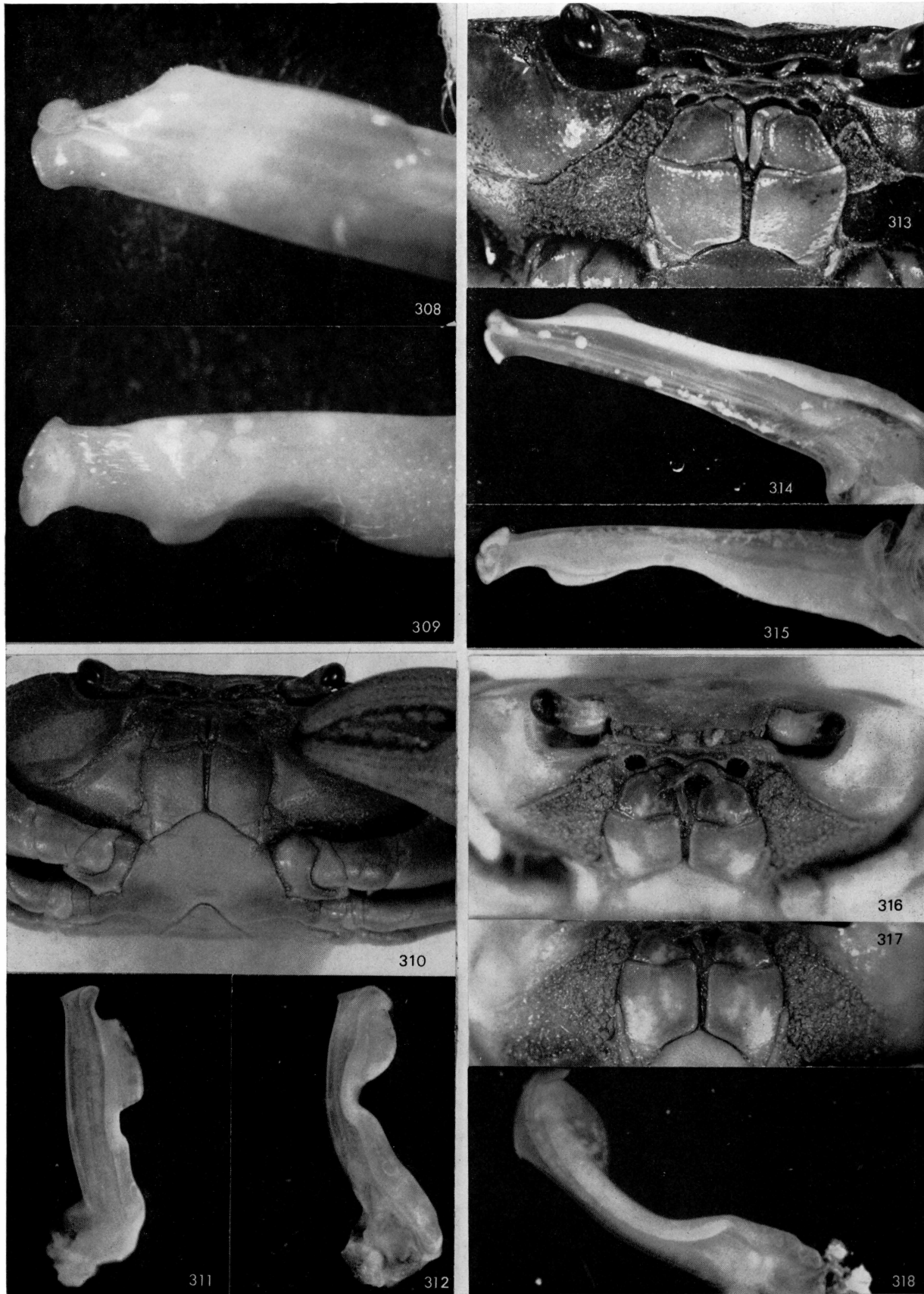


Abb. 308, 309: *Hypolobocera (Hypolobocera) bouvieri beieri*, Holotypus. — Abb. 310—312: *Hypolobocera (Hypolobocera) andagoensis*, Holotypus. — Abb. 313—315: *Hypolobocera (Hypolobocera) canaensis*, Holotypus. — Abb. 316—318: *Hypolobocera (Moritschus) ecuadorensis*.

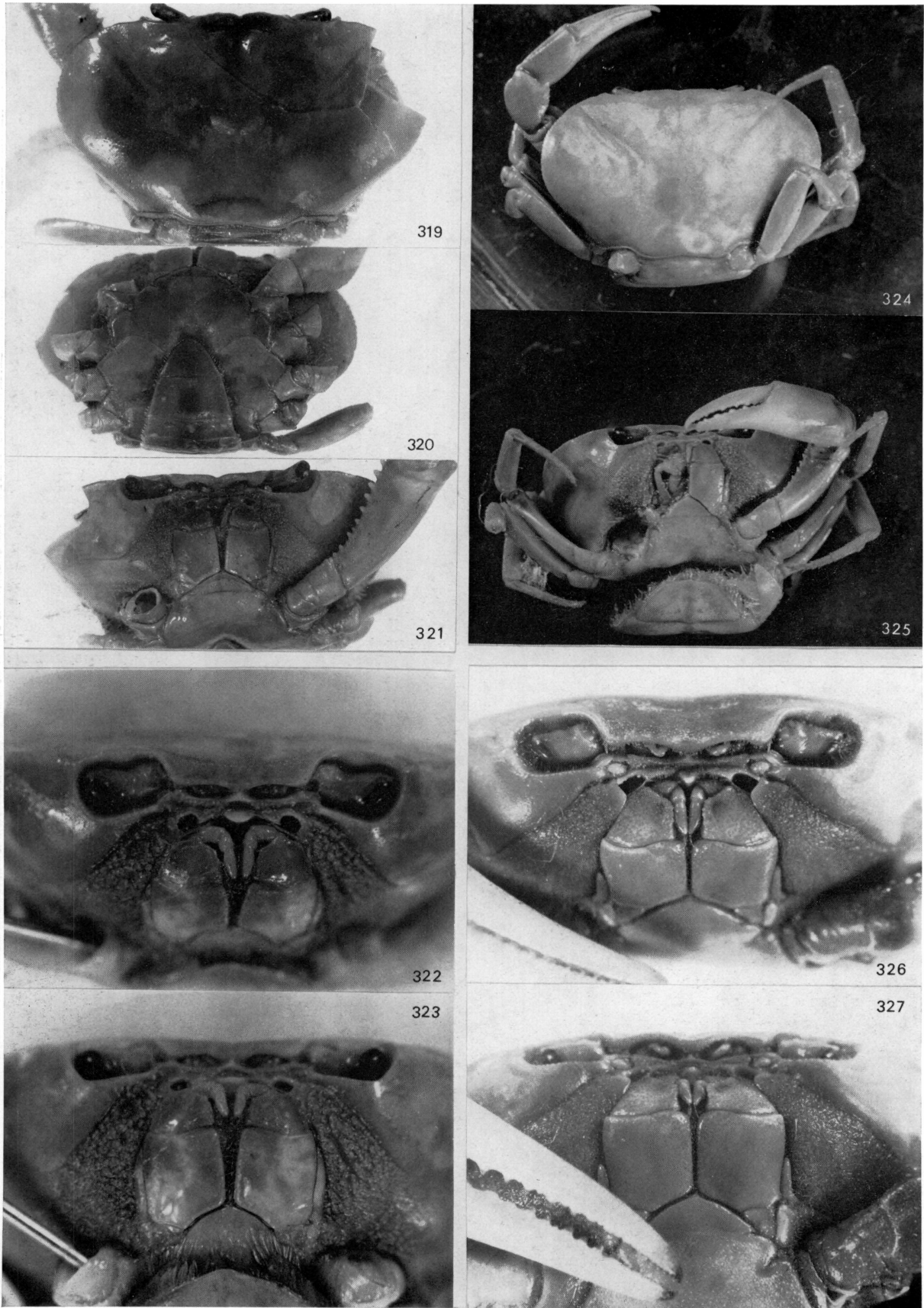


Abb. 319—321: *Hypobocera* (*Neostrengeria*) *guenteri*, Holotypus. — Abb. 322—325: *Hypobocera* (*Neostrengeria*) *lindigiana* *dispar*, Paratypus. — Abb. 326, 327: *Hypobocera* (*Neostrengeria*) *macropa*.