

Abb. 57—60: *Eudaniela (Microthelphusa) rodriguezi*, Holotypus. — Abb. 61—64: *Eudaniela (Neopseudothelphusa) wymanni*. —  
 Abb. 65—68: *Eudaniela (Kunziana) irengis*, Holotypus. — Abb. 69—72: *Eudaniela (Neopseudothelphusa) forcarti*, Holotypus.

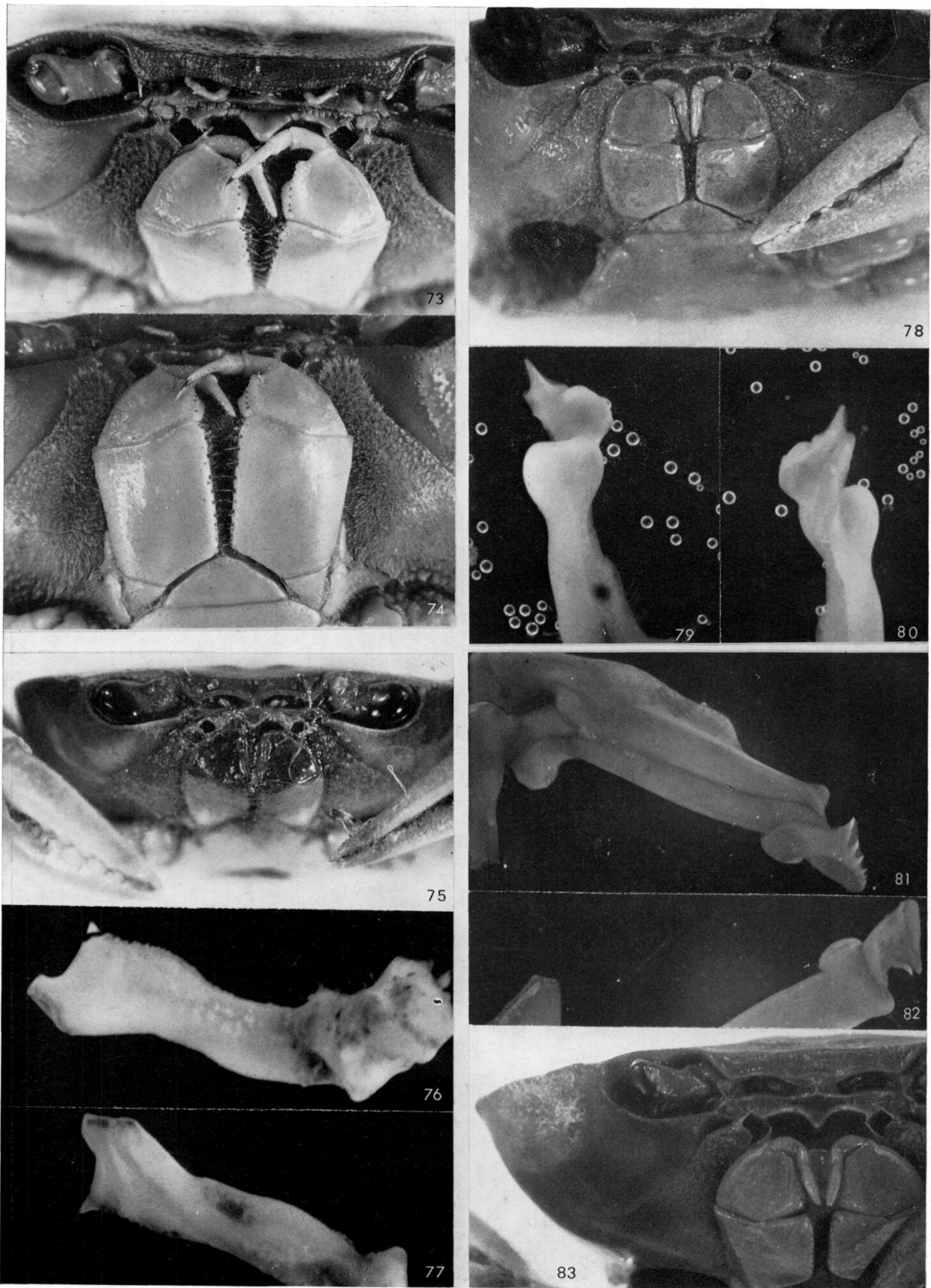


Abb. 73, 74: *Eudaniela (Aspoeckia) beccarii contorta*. — Abb. 75—77: *Eudaniela (Microthelphusa) roberti*. — Abb. 78—80: *Eudaniela (Neopseudothelphusa) fossor fossor*, Holotypus. — Abb. 81—83: *Eudaniela (Fredius) denticulata geayi*, Holotypus.

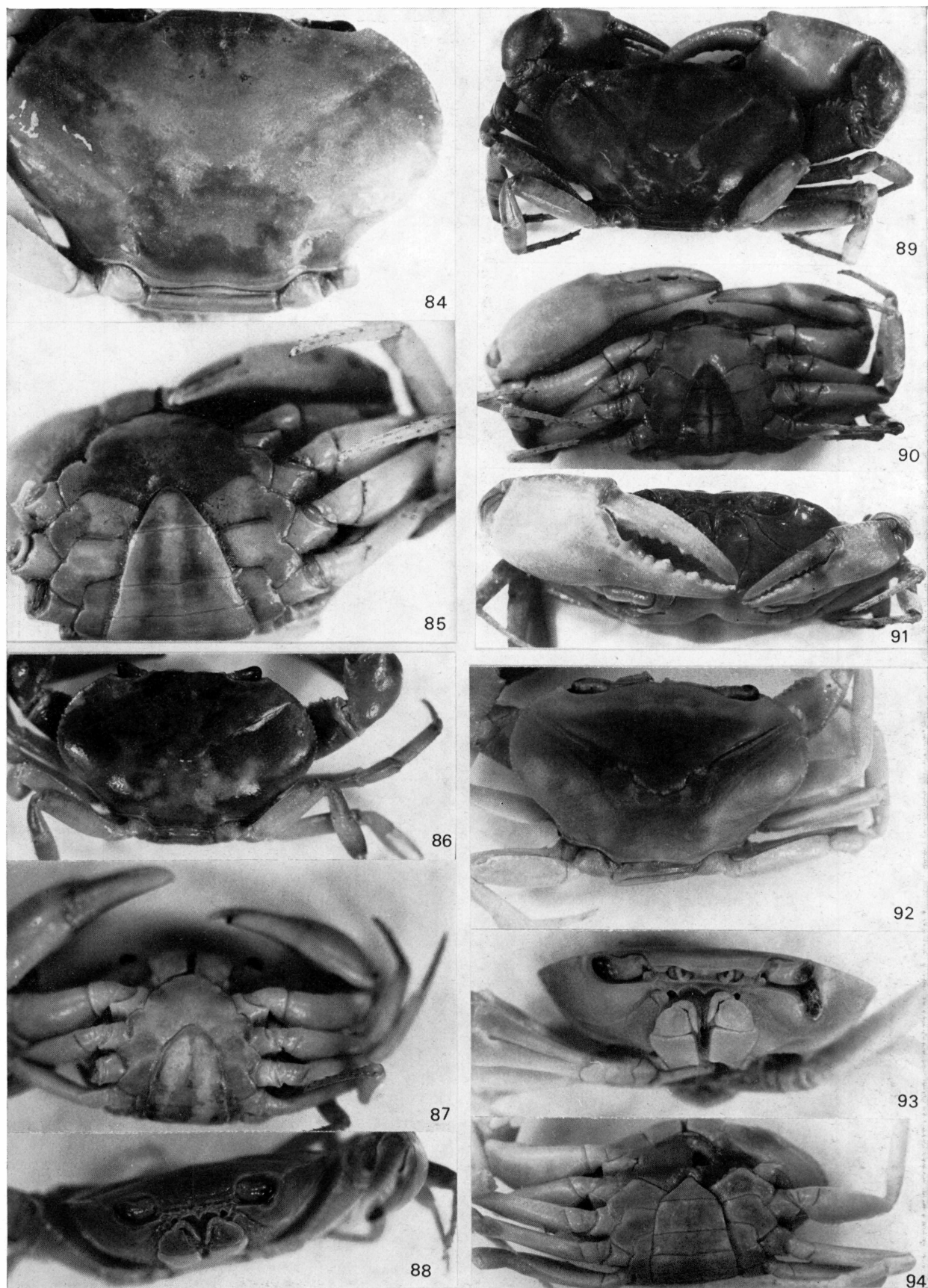


Abb. 84, 85: *Eudaniela (Neopseudothelphusa) fossor fossor*, Holotypus. — Abb. 86—88: *Eudaniela (Neopseudothelphusa) forcarti*, Holotypus. — Abb. 89—91: *Eudaniela (Neopseudothelphusa) wymanni*. — Abb. 92—94: *Eudaniela (Kunziana) irengis*, Holotypus.



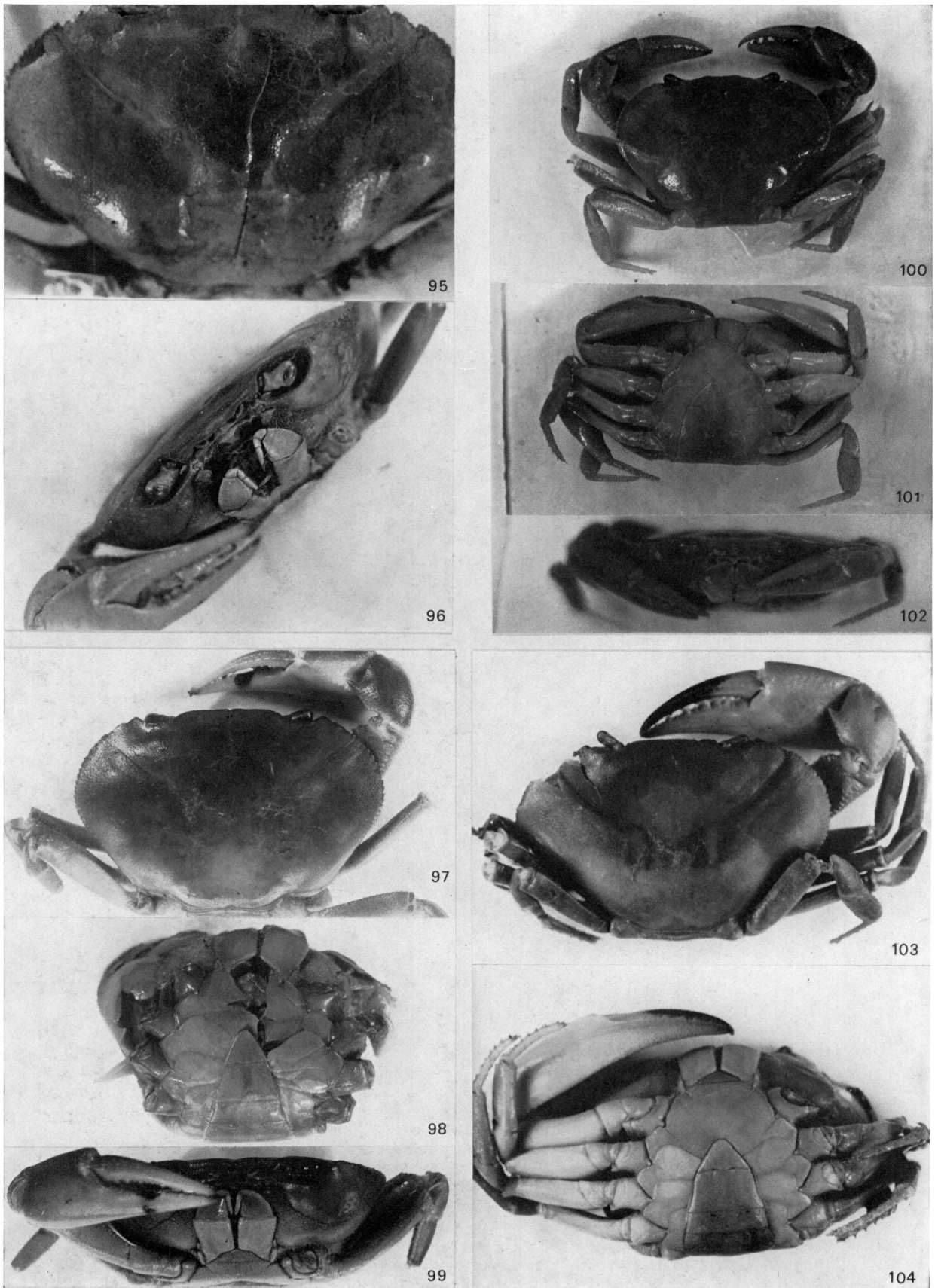


Abb. 95—96: *Eudaniela (Aspoeckia) chaffanjonii*, Holotypus. — Abb. 97—99: *Eudaniela (Aspoeckia) chaffanjonii*, Allotypus. — Abb. 100—102: *Eudaniela (Aspoeckia) siolii*. — Abb. 103—104: *Eudaniela (Aspoeckia) beccarii beccarii*.



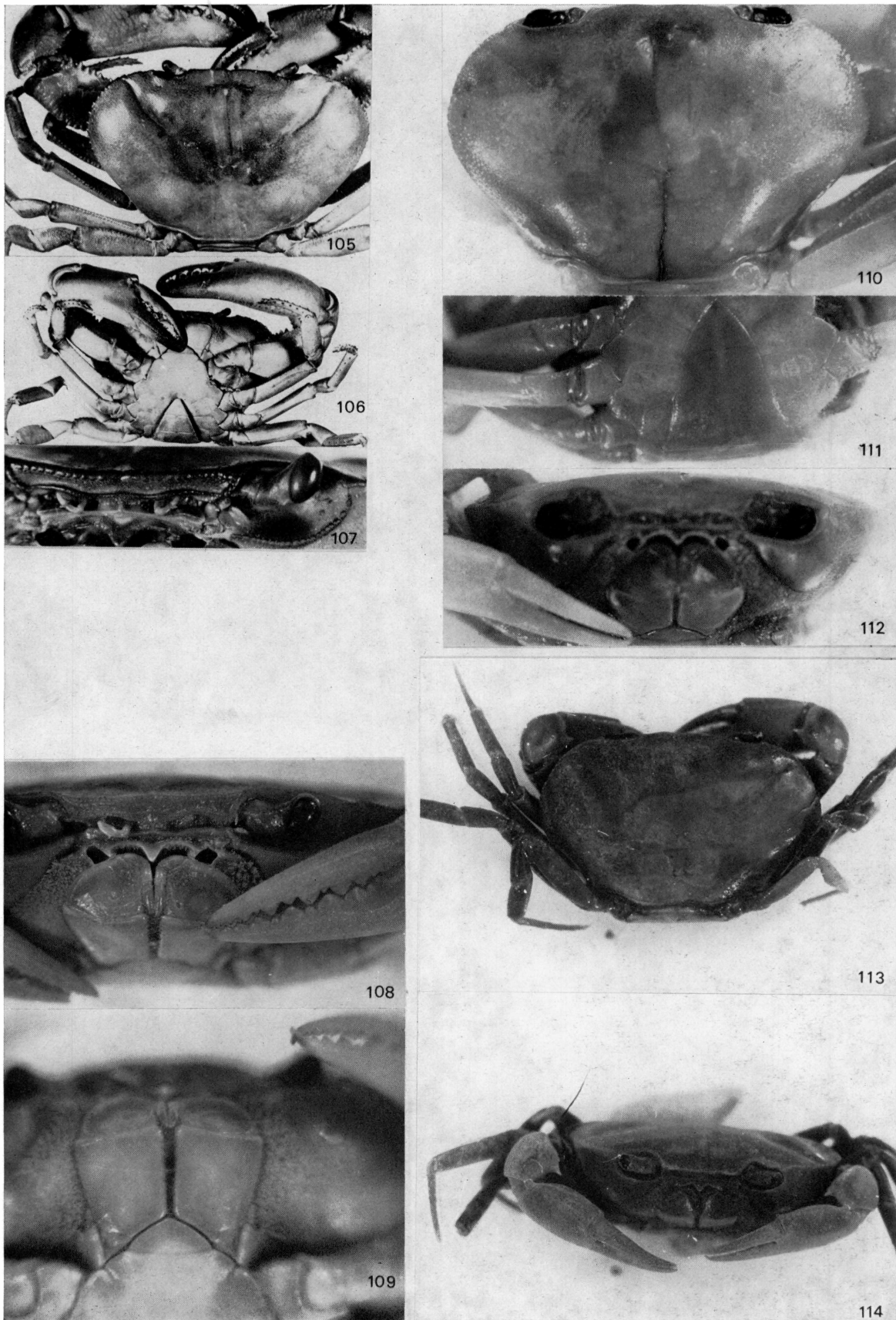


Abb. 105—107: *Eudaniela (Aspoeckia) estevisi* (Repr. aus RODRIGUEZ 1966). — Abb. 108—109: *Eudaniela (Aspoeckia) siolii*. — Abb. 110—112: *Eudaniela (Microthelphusa) rodriguezi*, Holotypus. — Abb. 113, 114: *Eudaniela (Microthelphusa) venezuelensis*, Holotypus.

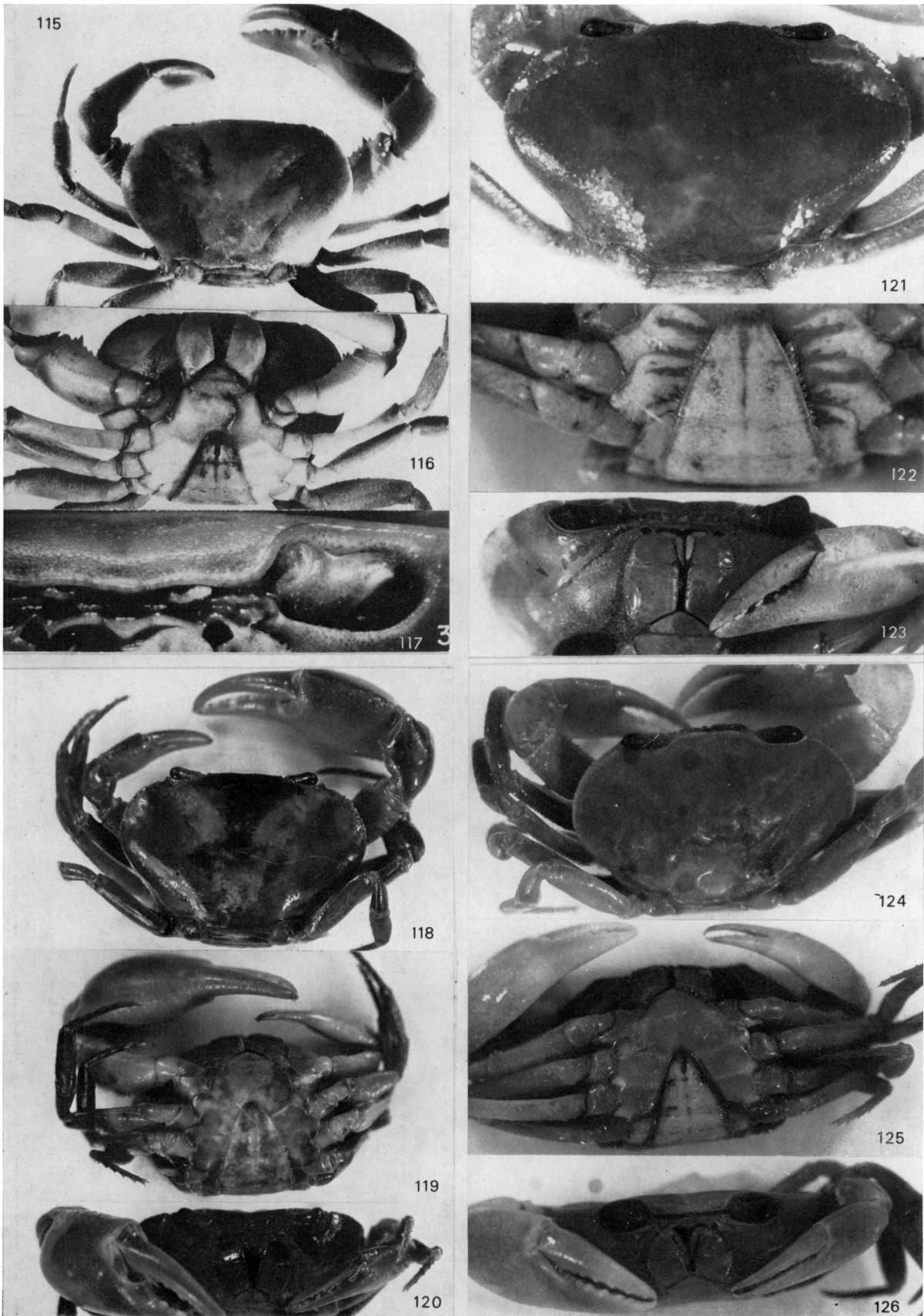


Abb. 115—117: *Eudaniela (Microhelphusa) venezuelensis* (nach RODRIGUEZ 1966). — Abb. 118—120: *Eudaniela (Microhelphusa) somanni*. — Abb. 121—123: *Eudaniela (Microhelphusa) roberti*. — Abb. 124—126: *Eudaniela (Microhelphusa) simoni simoni*, Holotypus.

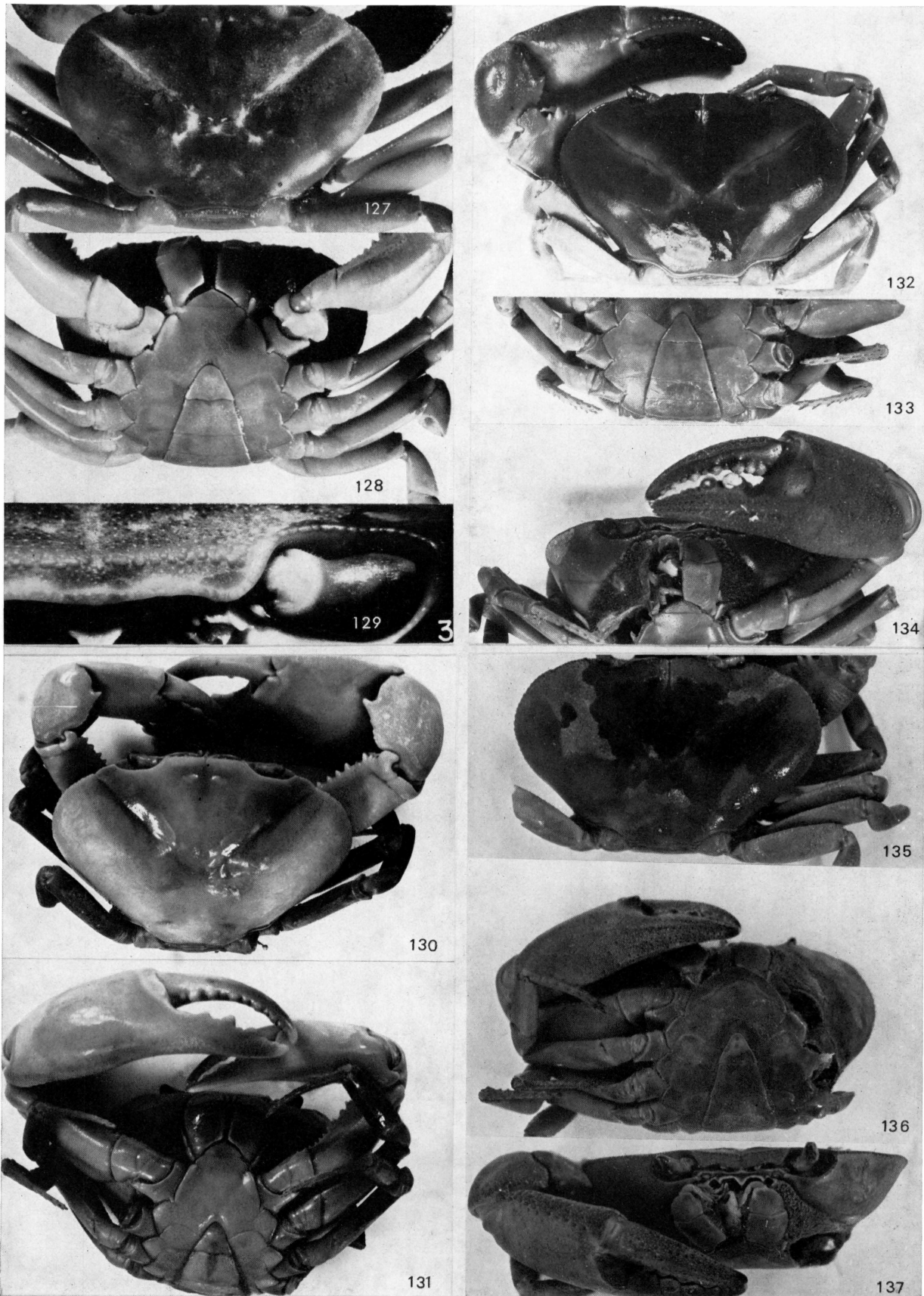


Abb. 127—129: *Eudaniela (Microthelphusa) racenisi*, Holotypus (Repr. aus RODRIGUEZ 1966). — Abb. 130—131: *Eudaniela (Eudaniela) pestai*, Holotypus. — Abb. 132—134: *Eudaniela (Eudaniela) iturbei iturbei*, Holotypus. — Abb. 135—137: *Eudaniela (Eudaniela) garmani garmani*, Holotypus.



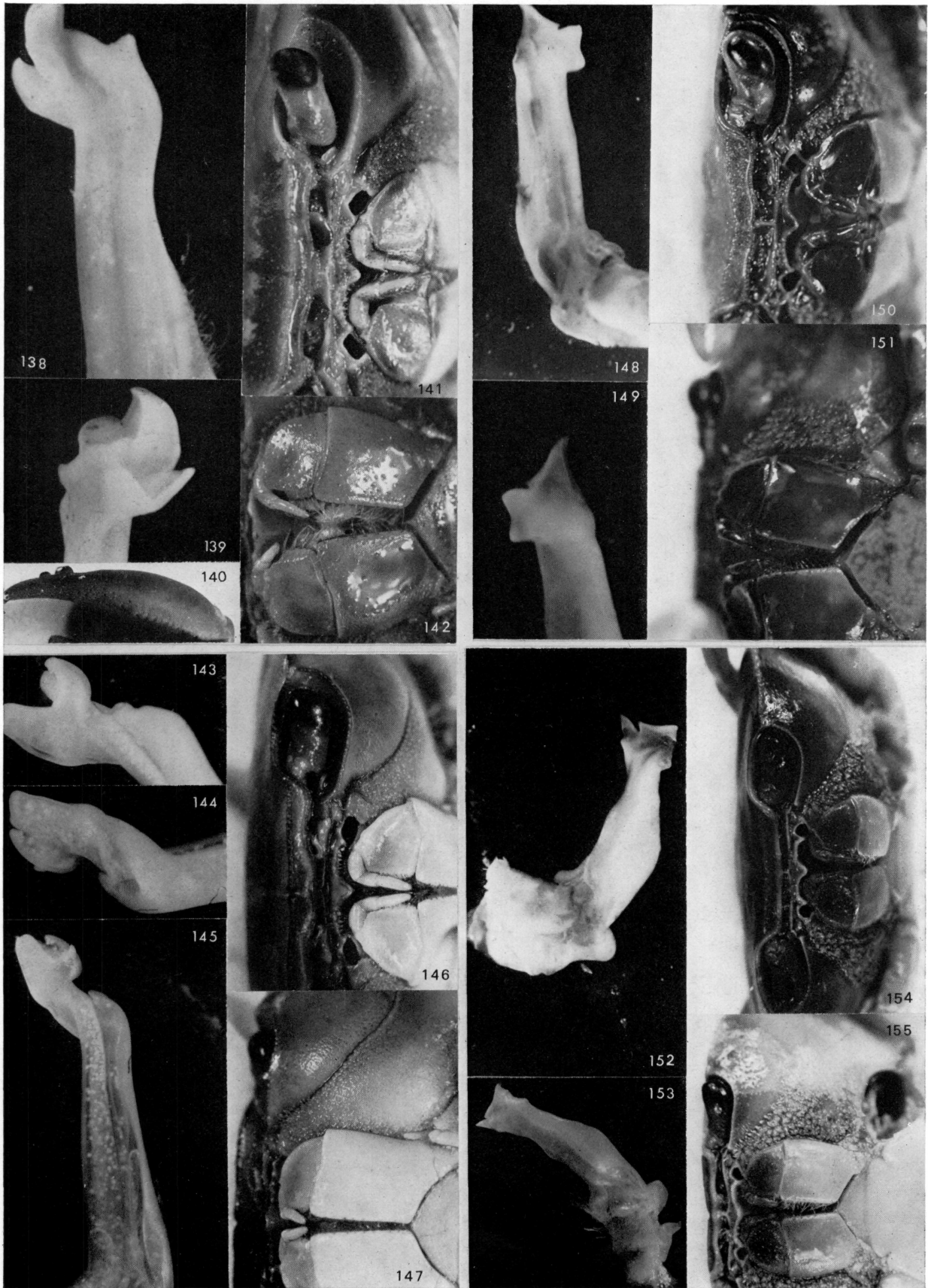


Abb. 138—142: *Eudaniela (Eudaniela) iturbei iturbei* (Holotypus; r.G.). — Abb. 143—147: *Eudaniela (Aspoeckia) chaffanjeni*, Allotypus. — Abb. 148—151: *Eudaniela (Microthelphusa) somanni* (r.G.). — Abb. 152—155: *Eudaniela (Microthelphusa) simoni chacei*, Holotypus (r.G.).

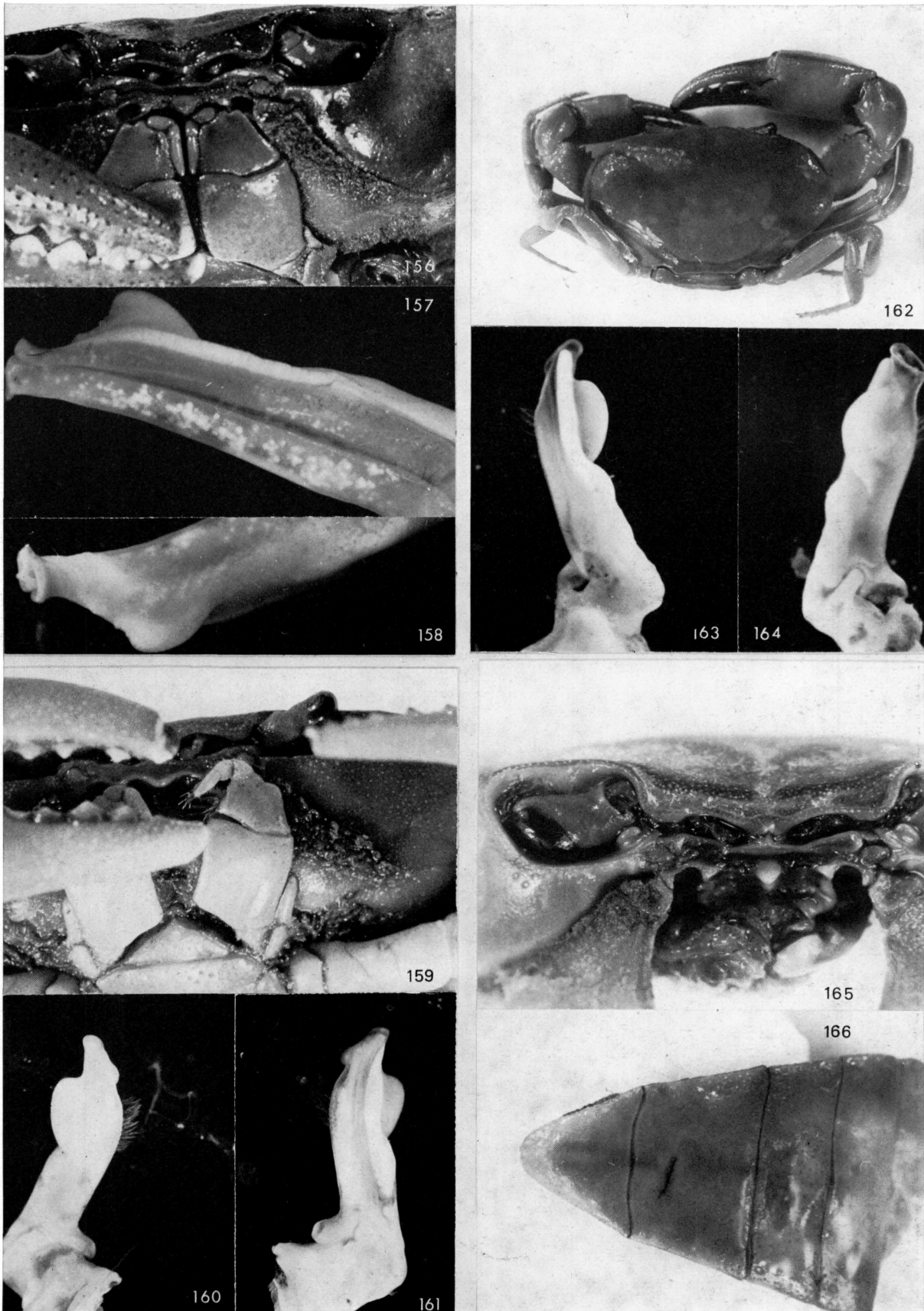


Abb. 156—158: *Hypolobocera (Hypolobocera) bouvieri angulata*, Holotypus. — Abb. 159—161: *Hypolobocera (Hypolobocera) martelathami*, Holotypus. — Abb. 162—164: *Hypolobocera (Hypolobocera) plana orientalis*, Holotypus. — Abb. 165, 166: *Hypolobocera (Hypolobocera) bouvieri bouvieri*, Holotypus.

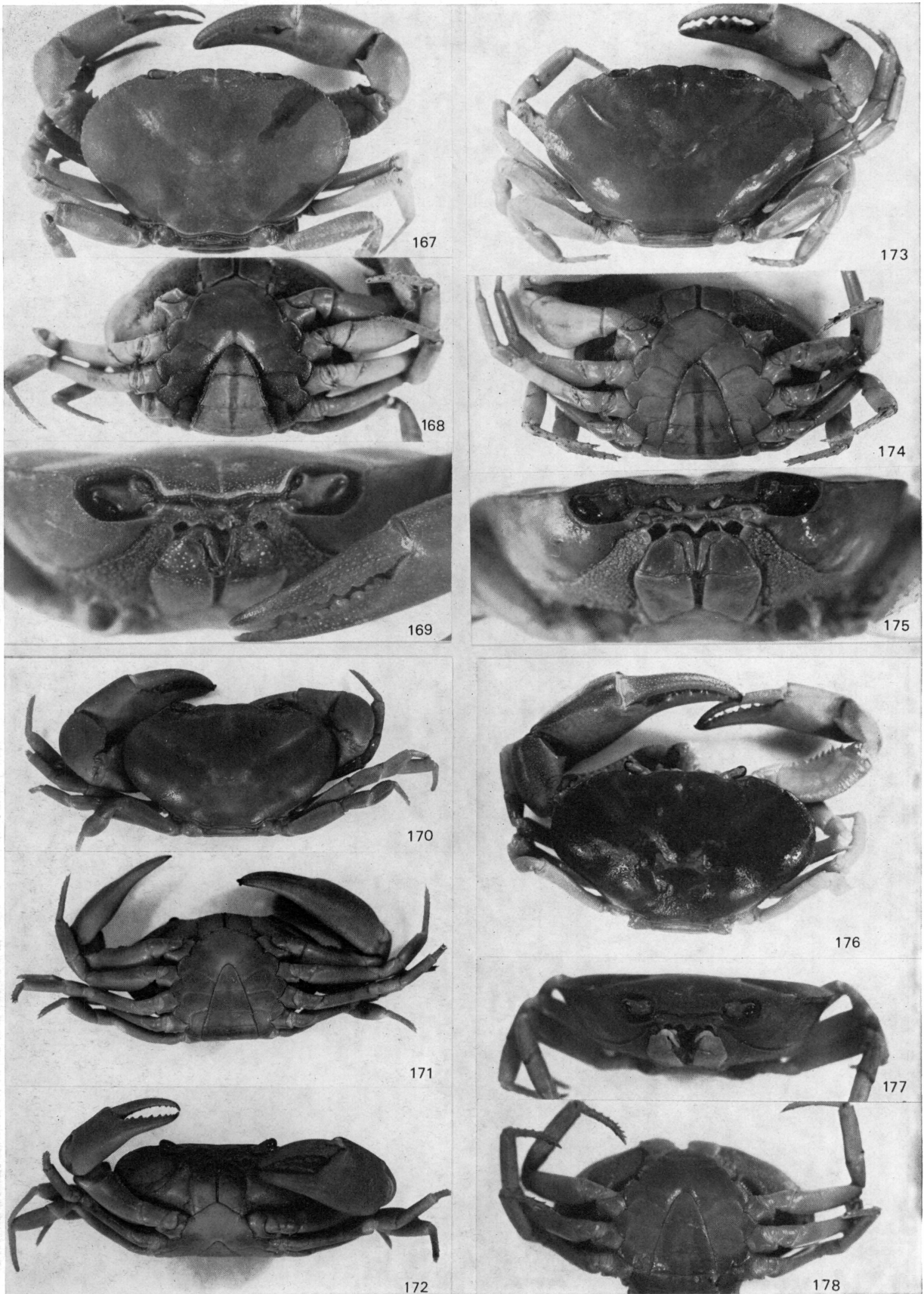


Abb. 167—169: *Hypolobocera (Hypolobocera) aequatorialis nigra*, Holotypus. — Abb. 170—172: *Hypolobocera (Hypolobocera) andagoensis*, Holotypus. — Abb. 173—175: *Hypolobocera (Hypolobocera) guayaquilensis* s.str., Holotypus. — Abb. 176—178: *Hypolobocera bouvieri beieri*, Holotypus.



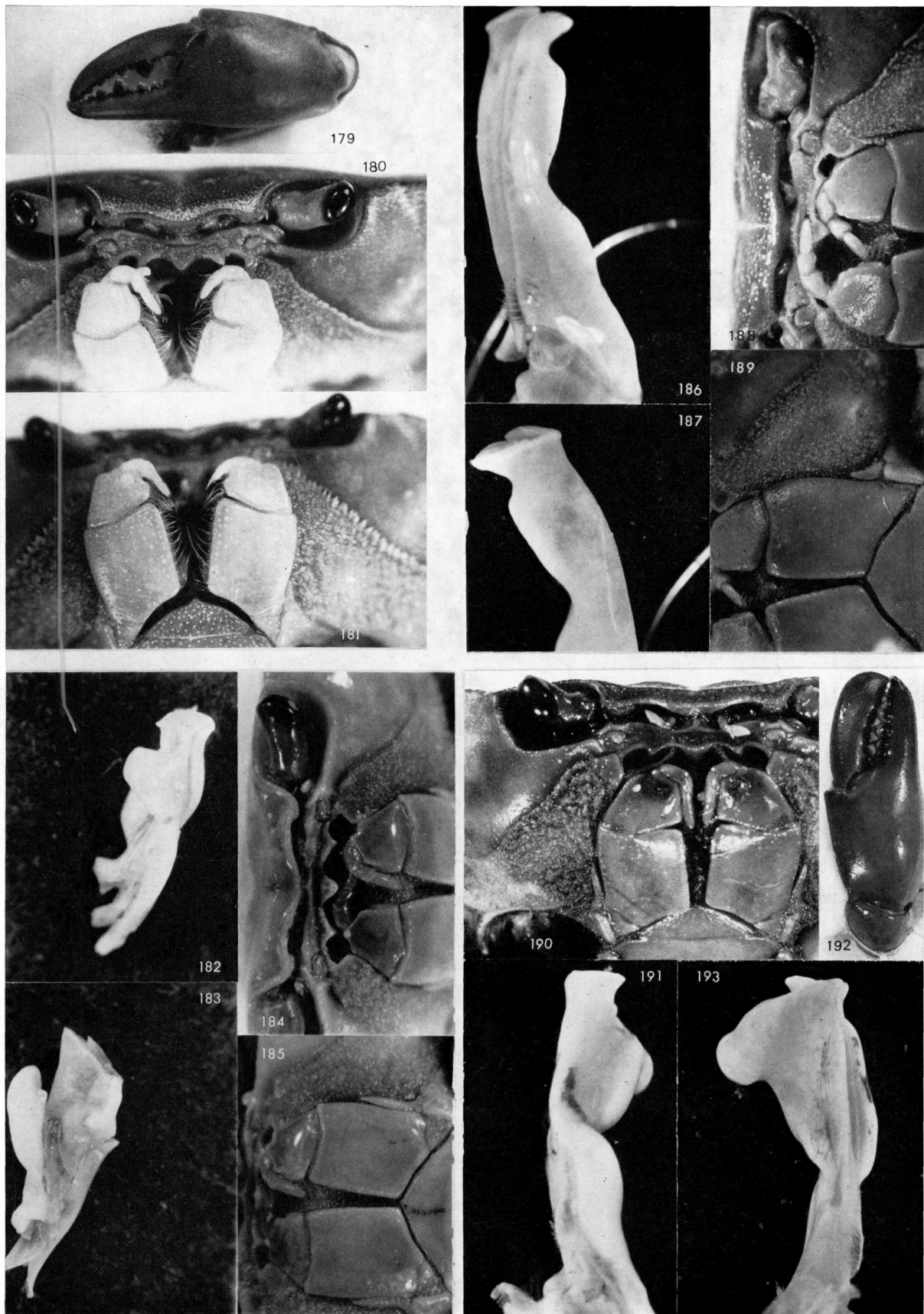


Abb. 179—181: *Hypolobocera (Hypolobocera) bowvieri beieri*, Holotypus. — Abb. 182—185: *Hypolobocera (Neostrengeria) guenteri*, Holotypus. — Abb. 186—189: *Hypolobocera (Hypolobocera) aequatorialis* s.str., Holotypus. — Abb. 190—193: *Hypolobocera conradi latipenis*, Holotypus.

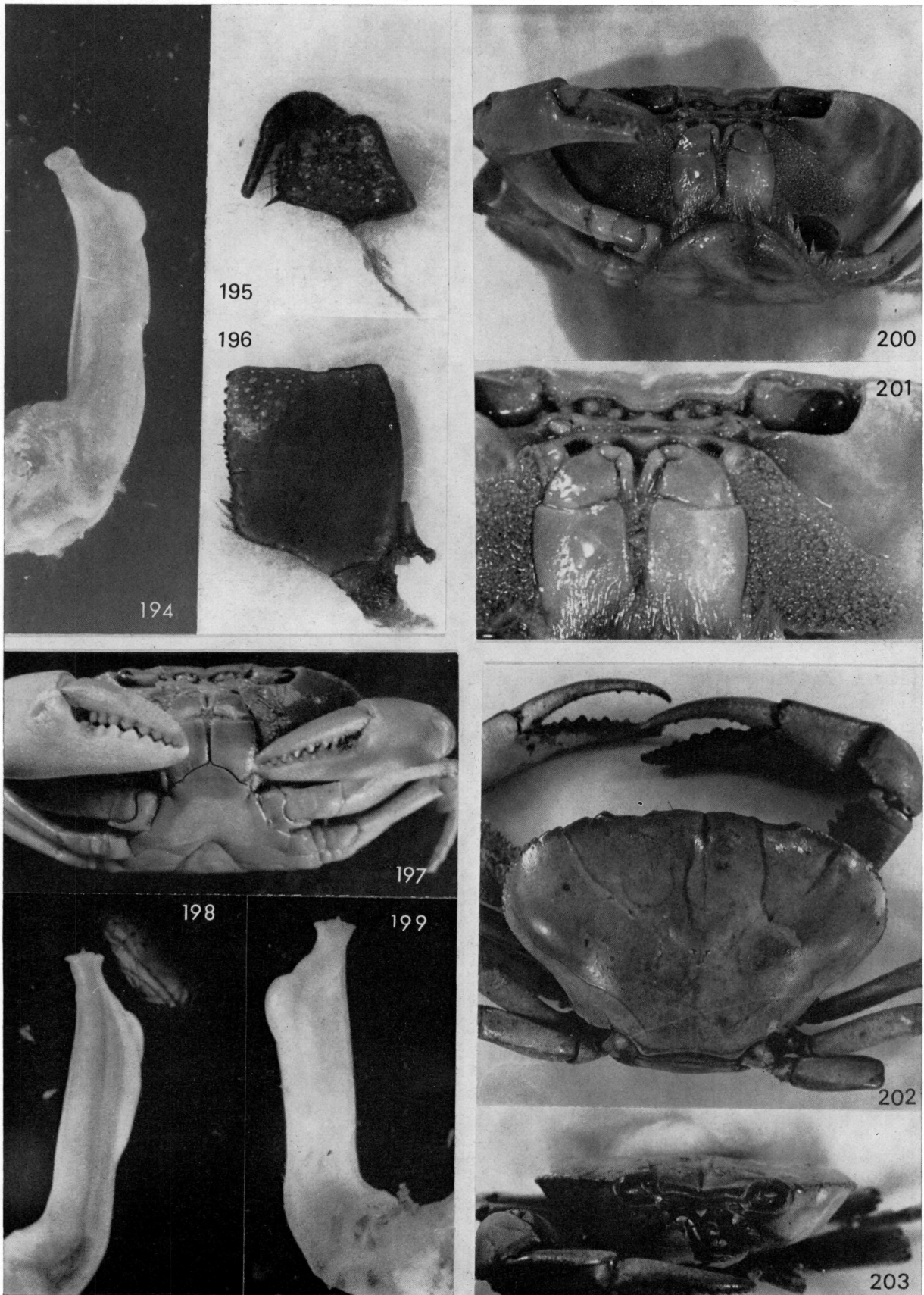


Abb. 194—196: *Hypolobocera (Hypolobocera) bouvieri bouvieri*, Holotypus. — Abb. 197—199: *Hypolobocera (Hypolobocera) monticola* s.str., Holotypus. — Abb. 200, 201: *Hypolobocera (Hypolobocera) nobilii*, Paratypus. — Abb. 202, 203: *Hypolobocera (Hypolobocera) chilensis*, Allotypus.