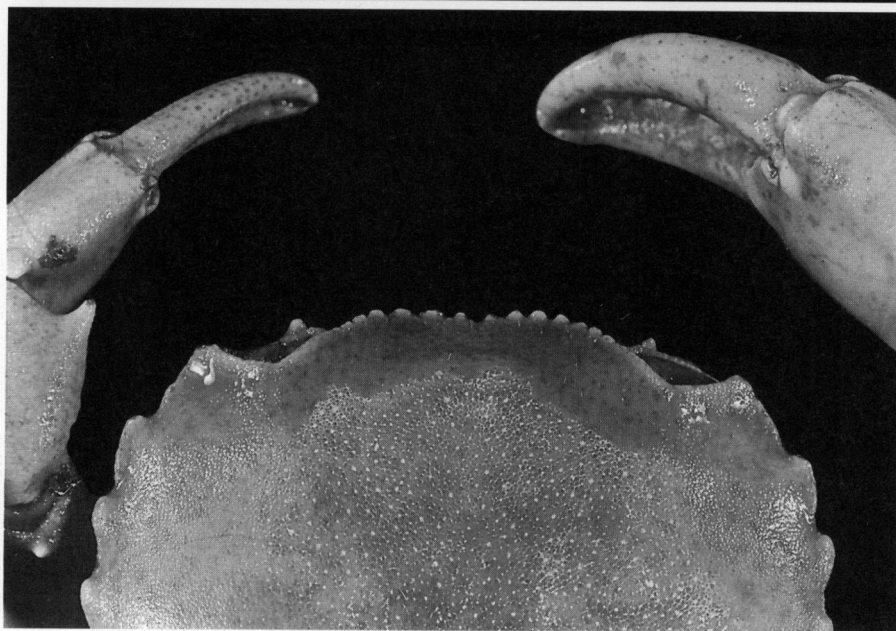
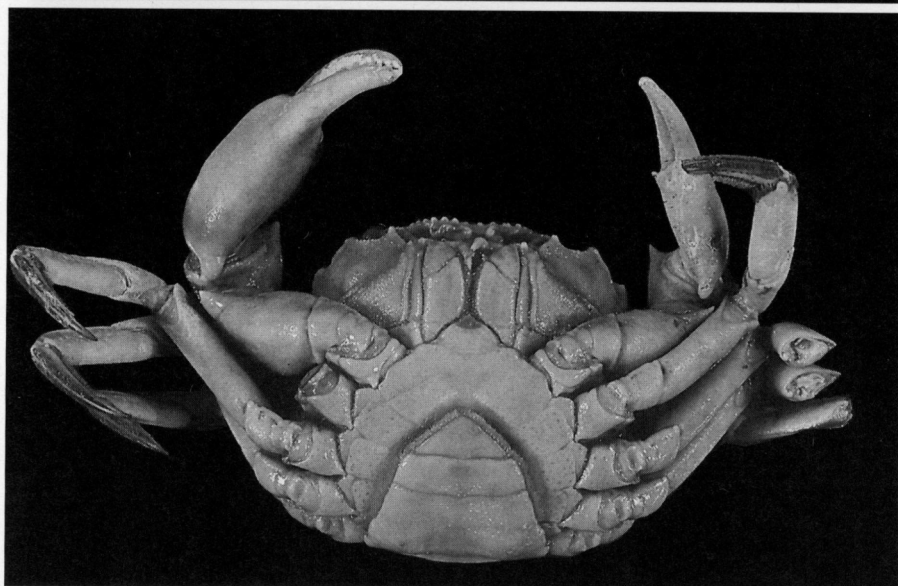
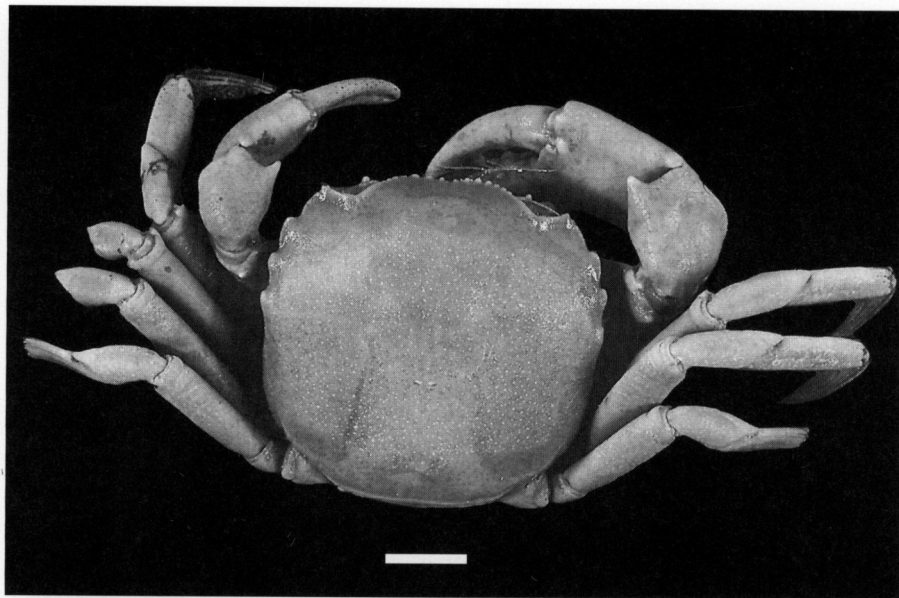
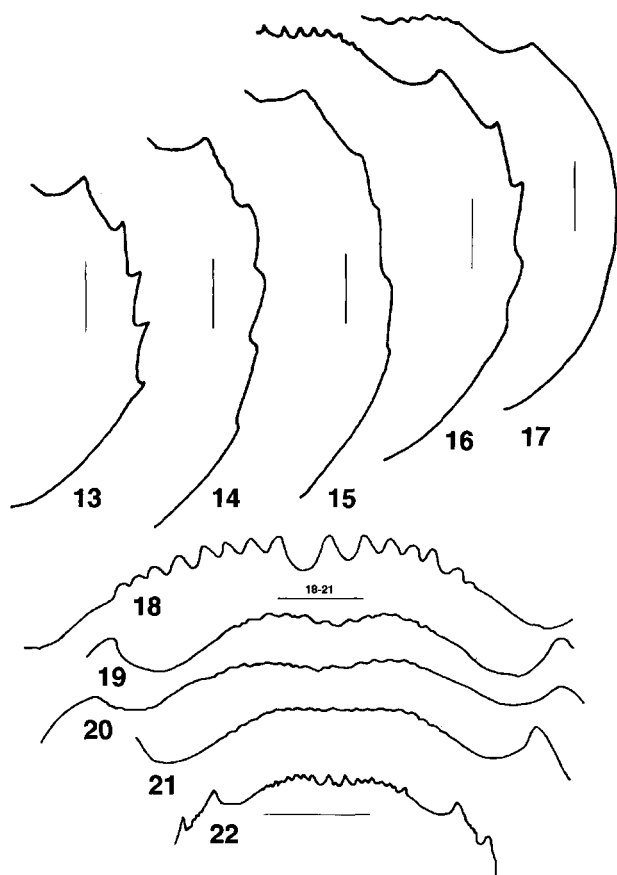


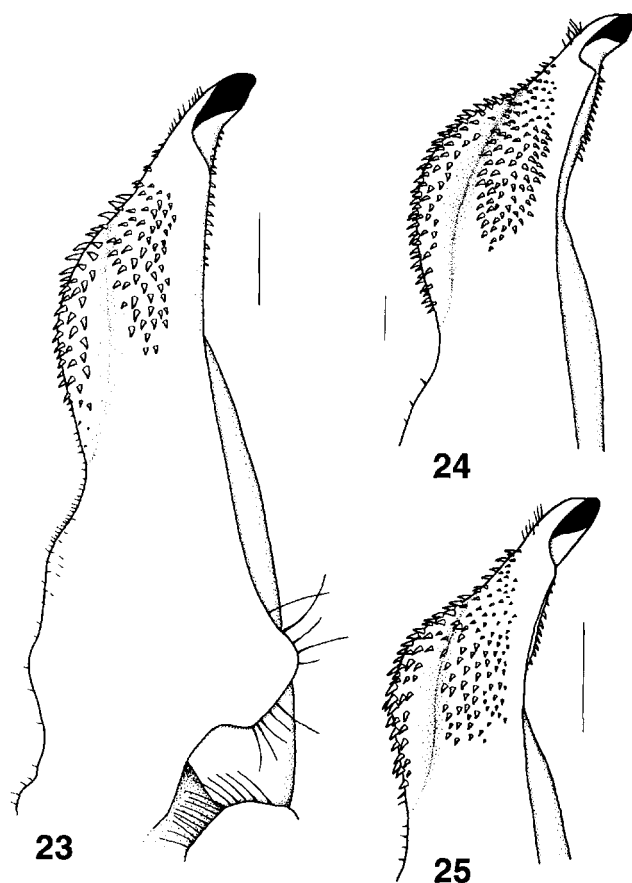


Fig. 11. *Sylviocarcinus devillei* (holotype of *Trichodactylus (Valdivia) peruvianus* A. MILNE-EDWARDS 1869 MNHN 4048), dorsal and ventral aspect, detail of front (Photo J. REBIÈRE).





Figs. 13-22. *Sylviocarcinus devillei*, variability of carapace contours (13-17) and frontal borders (18-22). — 13) INPA-Cr 527; 14) MZUSP 2409; 15) MZUSP 6336; 16-17) Paratypes of *Sylviocarcinus gigas* SMALLEY & RODRIGUEZ 1972, USNM 139121. — Scales 13-17, 22: 1 mm, 18-21: 5 mm.



Figs. 23-25. *Sylviocarcinus devillei*, right male plp 1. — 23) SMF 12705; 24) holotype of *Sylviocarcinus gigas* SMALLEY & RODRIGUEZ 1972, USNM 139120; 25) holotype of *Dilocarcinus margaritifrons* ORTMANN 1893, MZVS. — Scales 1 mm.

2 ♂ (USNM 231583), idem, leg. A. SUAMAT; 1 ♀ (USNM 231791), 1 ♀ (USNM 231789), 1 ♂ 1 ♀ (USNM 231588), idem; 31.I.1980, leg. R. MC DIORMID; 1 ♀, broken (USNM 231589), idem, 1.II.1980, leg. R. MC DIORMID; 4 ♂ 6 ♀ (USNM 228882), idem, 15.II.1980, leg. R. MC DIORMID; 1 ♂ 2 ♀ (USNM 231849), Rio Cenepa, San Antonio, 25.VIII.1977, leg. R. MC DIORMID; 1 ♀ (USNM 231596), idem, 10.VII.1977, leg. R. MC DIORMID; 1 ♀ (USNM 228883), idem, 21.VIII.1977, leg. R. MC DIORMID; 2 ♀ (USNM 231810), Rio Cenepa, near Huampami, 21.VII.1977, leg. R. MC DIORMID; 1 ♂ 1 ♀ (USNM 231573), Rio Cenepa, 10.VII.1977, leg. R. MC DIORMID. — Depto Loreto: 1 ♂ [42.9:40.5], holotype of *Dilocarcinus margaritifrons* ORTMANN (MZVS), Rio Ucayalli, 1874, REISS; 2 ♂ 3 ♀ (USU 415), Rio Napo, VI. 1993, leg. PANTOJA. — Depto San Martin: 1 ♂, dry (NNHM), Puerto Huicte, near Uchiza, Rio Huallaga, VIII.1948, leg. J. O. DE LA PUENTE. — Depto Junín: 1 ♀ (USNM 184267), Pacific Ocean, Otica/Tambo [= Rio Otica/Rio Tambo, upper Rio Ucayalli], 27.X.1977, leg. G. WEISS. — Depto Madre de Dios: 1 ♂ (NHMW

4183), Puerto Maldonado, Laguna Valencia, 7.XI.1972, leg. E. M. DEL SOLAR.

Without precise locality: 1 spec., dry, holotype of *Dilocarcinus spinifrons* KINGSLEY (ANSP 3096), upper Amazon, ? Brasil.

Diagnosis: Frontal margin distinctly pearly or spined, sometimes indistinct in large specimens. Antero-lateral borders with four or less teeth behind the external orbital tooth, these being usually triangular but acute, at times fading away in large specimens. Abdominal segments III-V fused. Male plp 1 with a strong subdistal lobe, subterminal spine field well developed and separated into three longitudinal patches at its basal two thirds, confluent towards tip. Displacement of the suture towards the dorsal side quite distinct.

Measurements: 37.2 : 32 : 17.5 : 12 (holotype ♀)