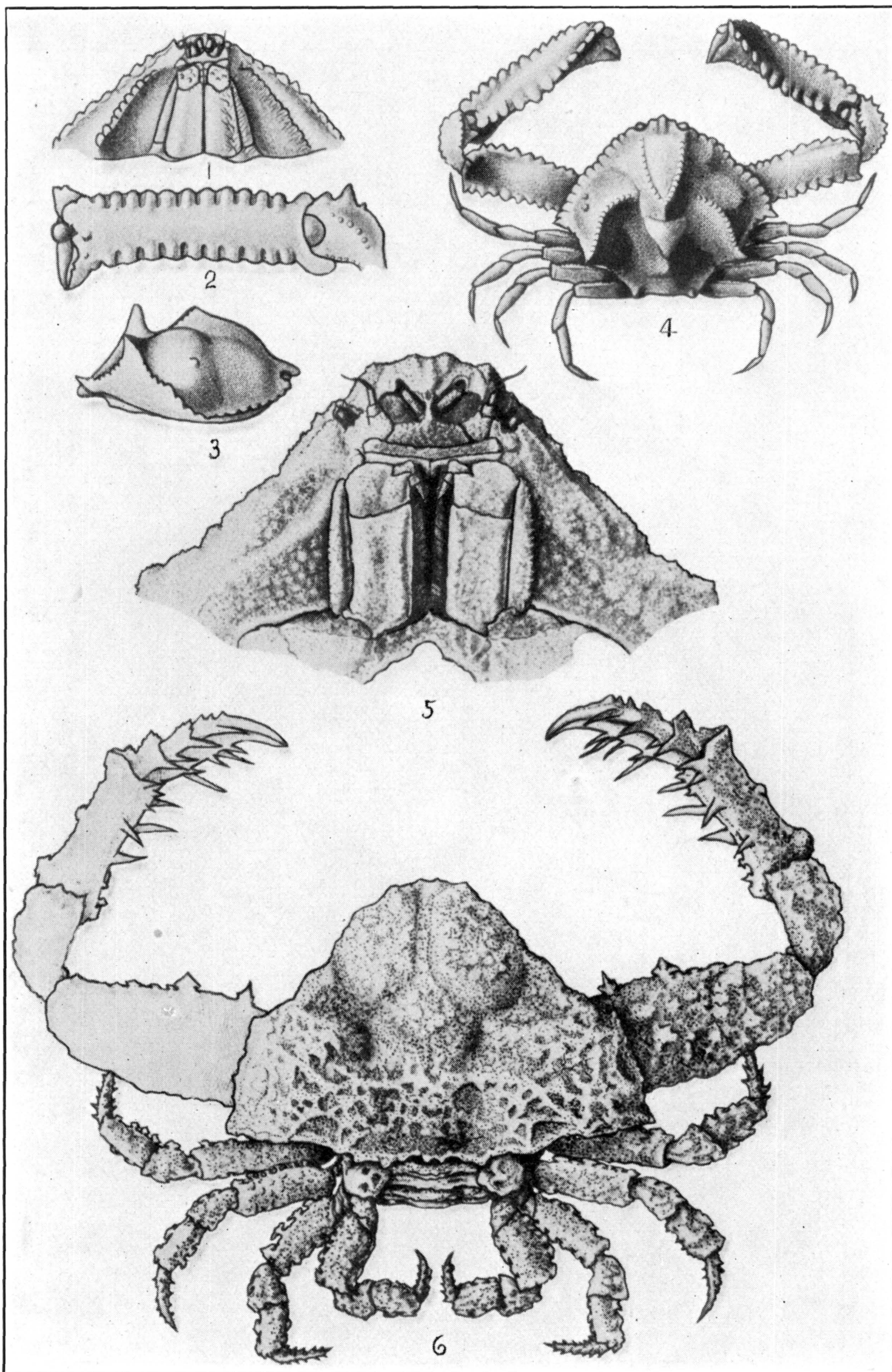
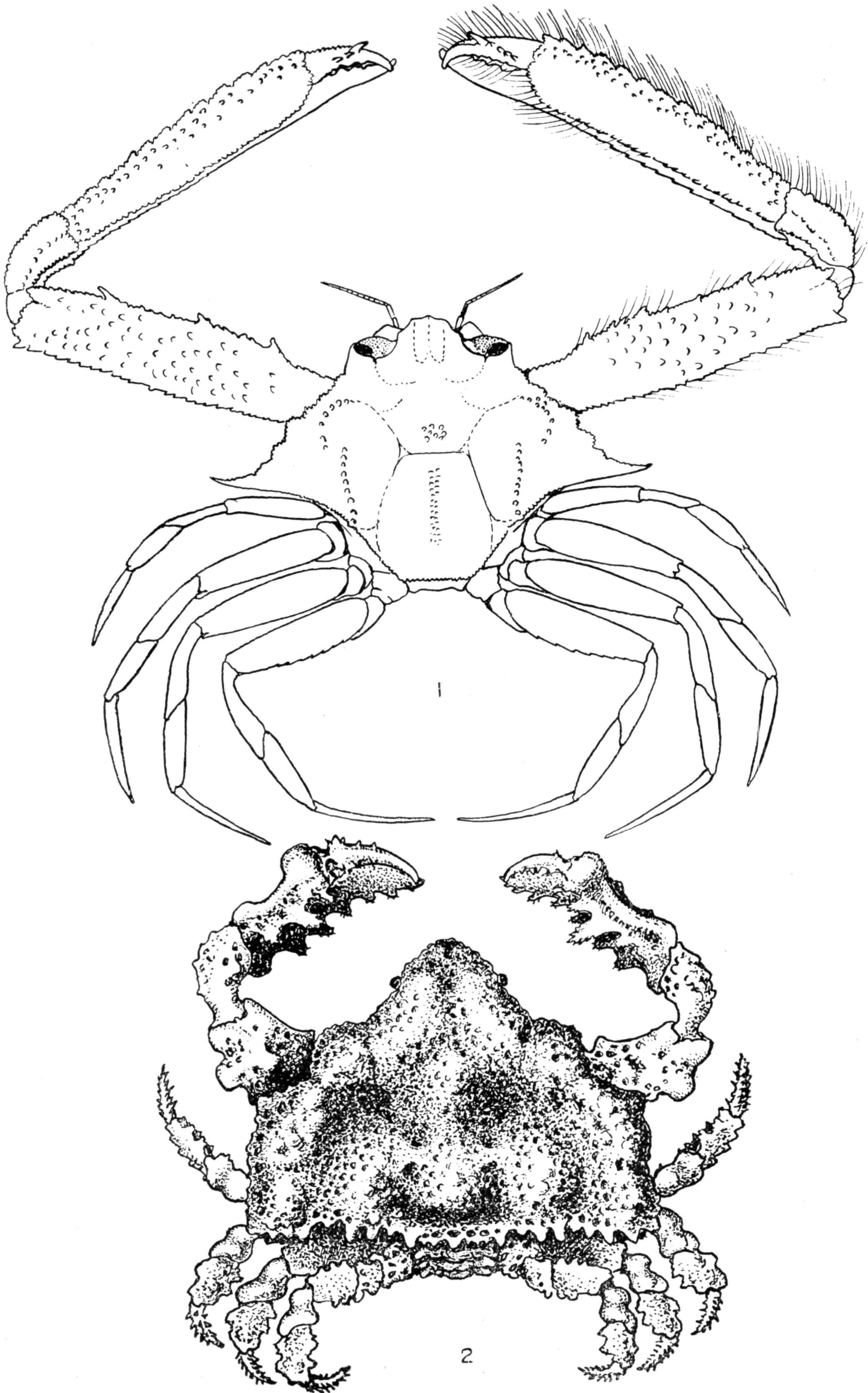


1-4. SOLENOLAMBRUS TYPICUS. (PAGE 537.) 5-9. S. TENELLUS. (PAGE 541)

FOR EXPLANATION OF PLATE SEE PAGE 597

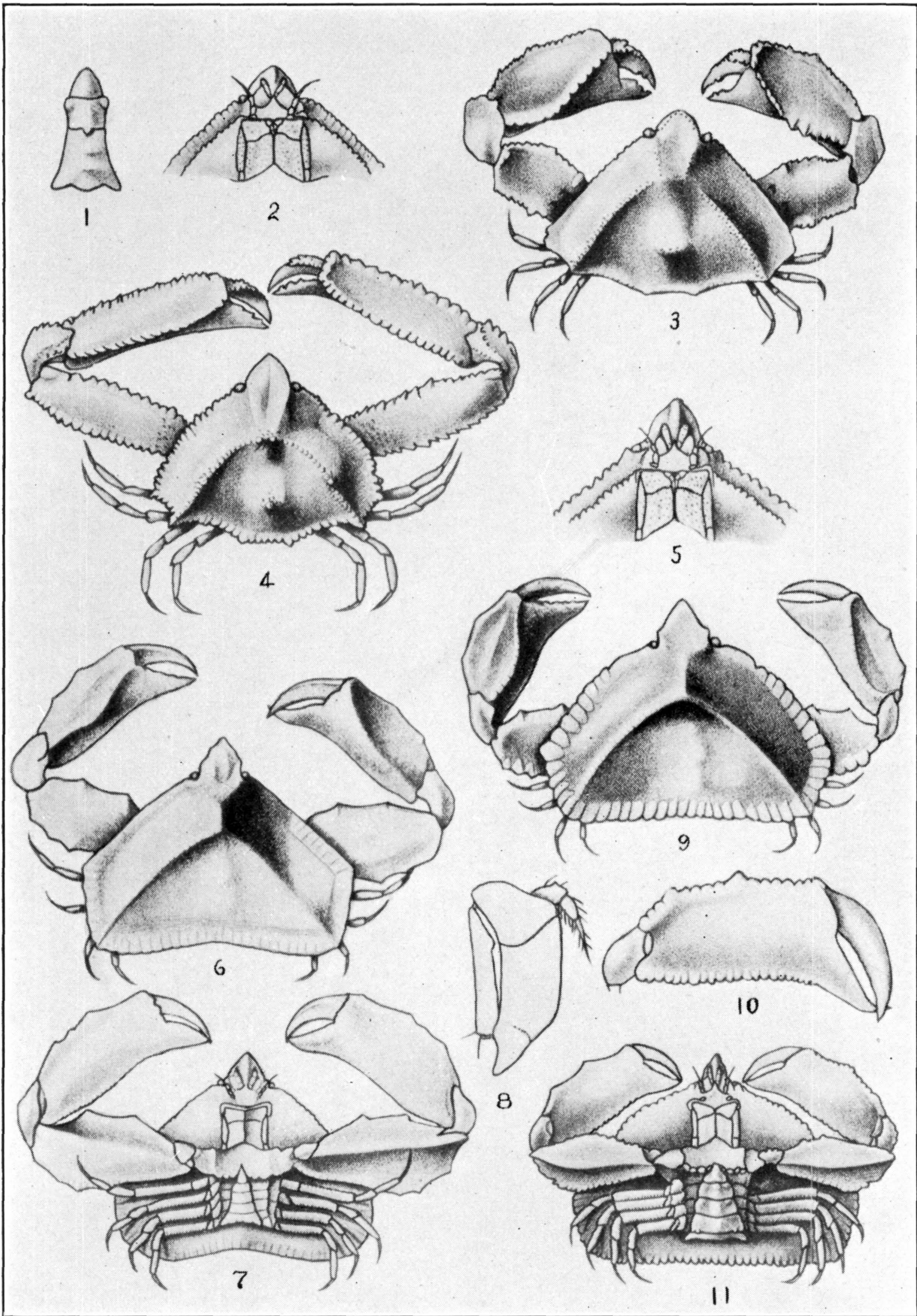


1-4. MESORHOEA BELLII. (PAGE 548.) 5, 6. THYROLAMBRUS ASTROIDES.
(PAGE 532)



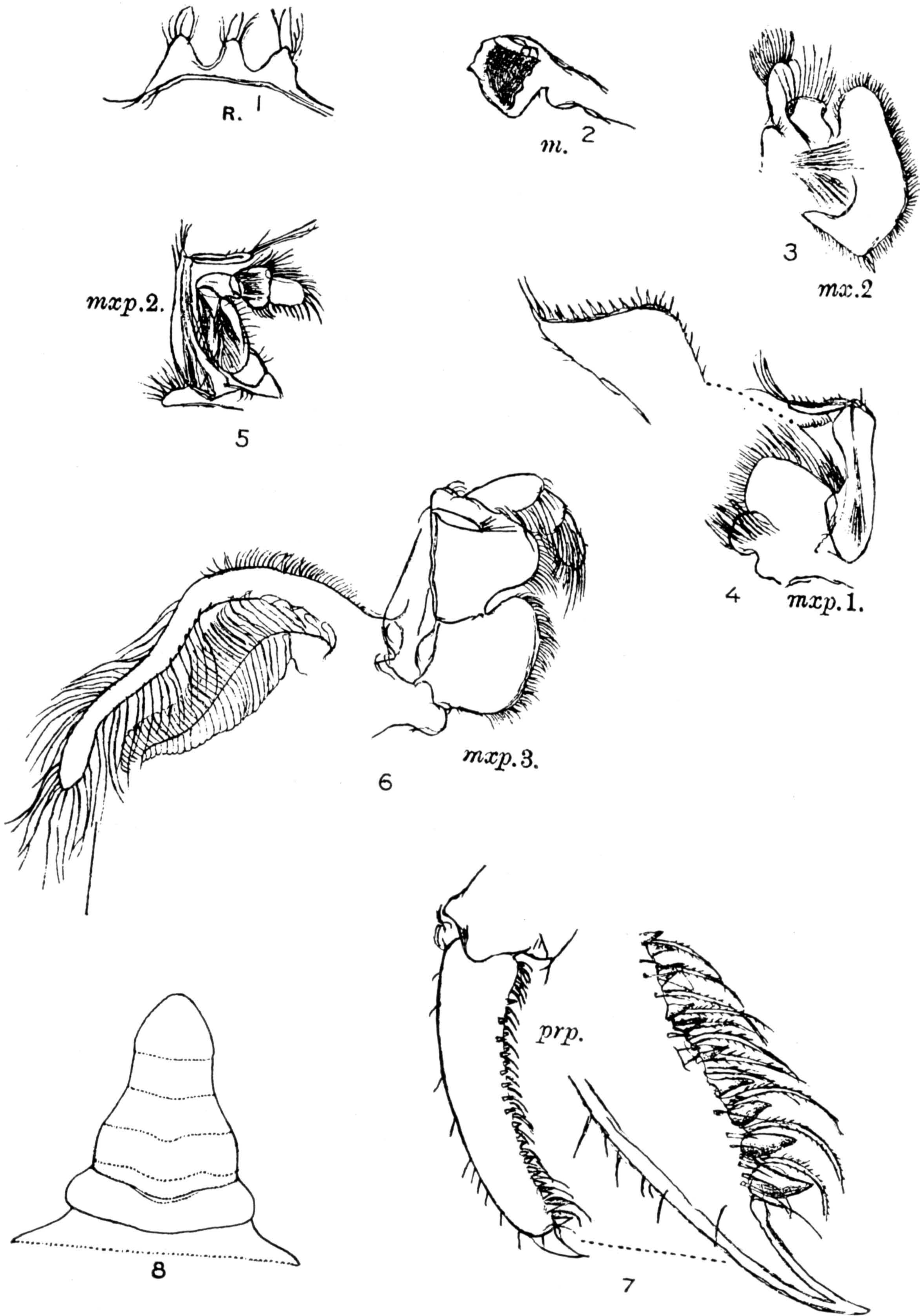
1. LEIOLAMBRUS NITIDUS. (PAGE 545.) 2. THYROLAMBRUS EROSUS.
(PAGE 533)

FOR EXPLANATION OF PLATE SEE PAGE 598



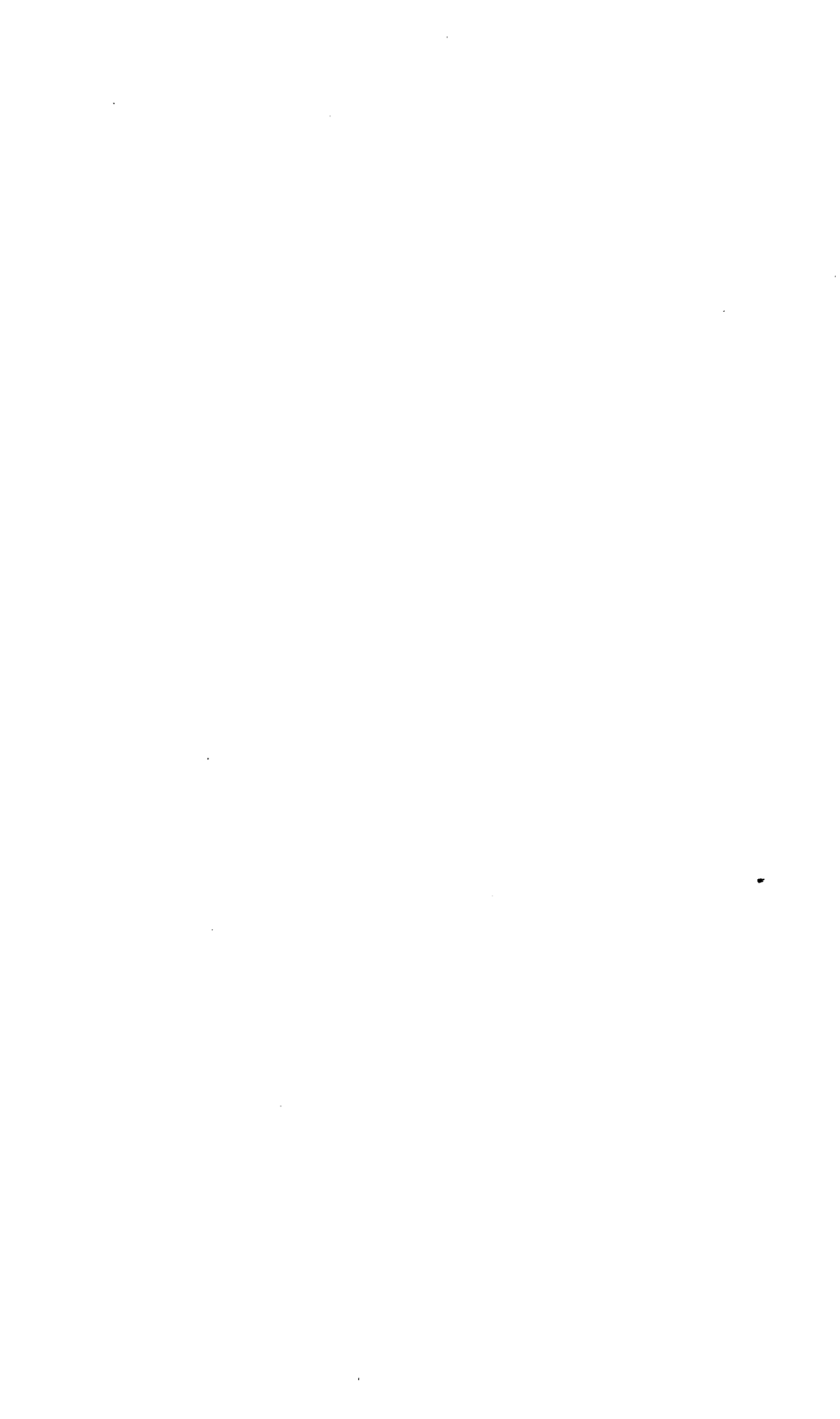
1-3. HETEROCRYPTA GRANULATA. (PAGE 555.) 4, 5. H. MACROBRACHIA. (PAGE 558.) 6-11. CRYPTOPODIA CONCAVA. (PAGE 553)

FOR EXPLANATION OF PLATE SEE PAGE 598



HALICARCINUS PLANATUS. (PAGE 563)

FOR EXPLANATION OF PLATE SEE PAGE 598



SMITHSONIAN INSTITUTION LIBRARIES



3 9088 01421 2088