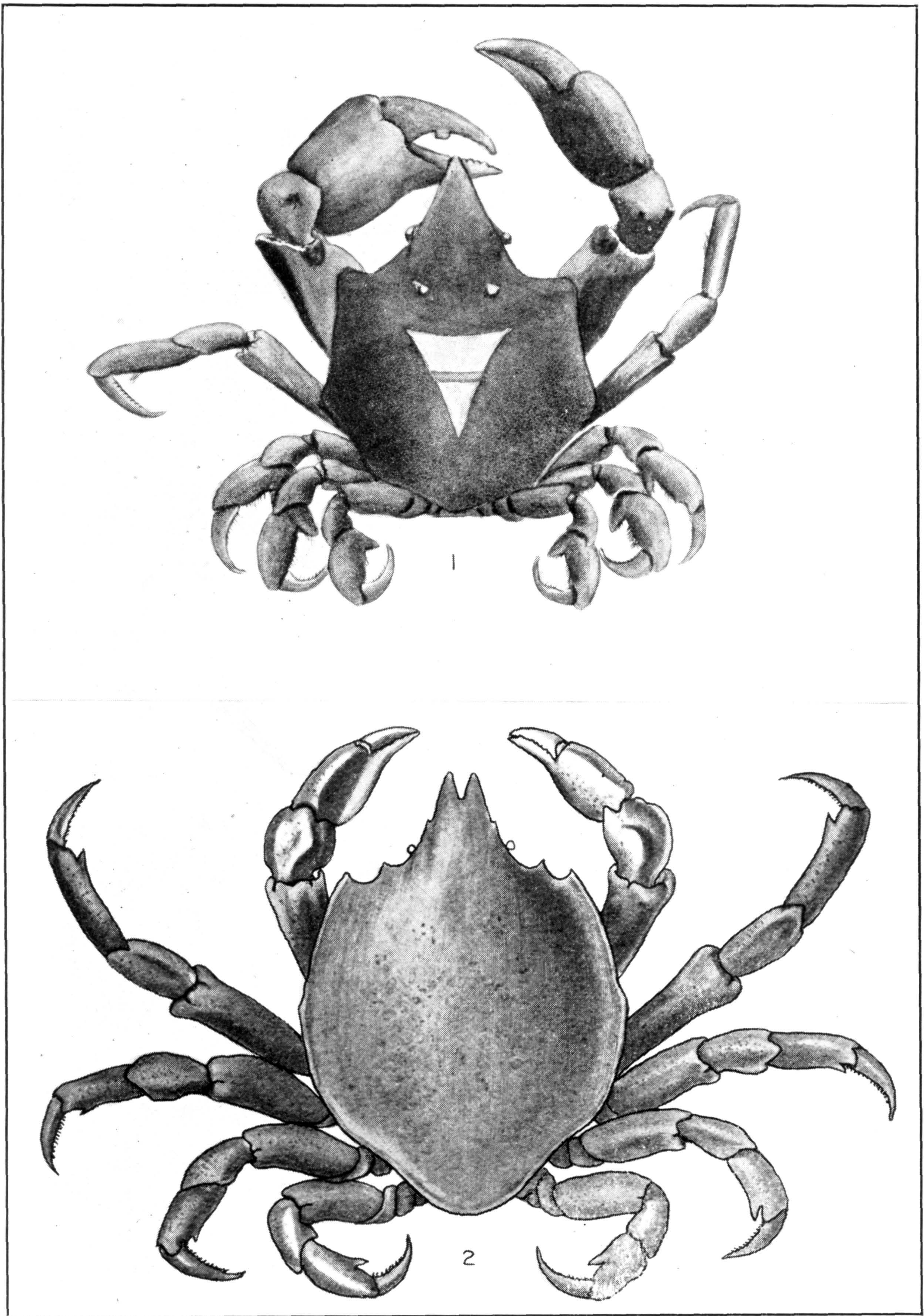


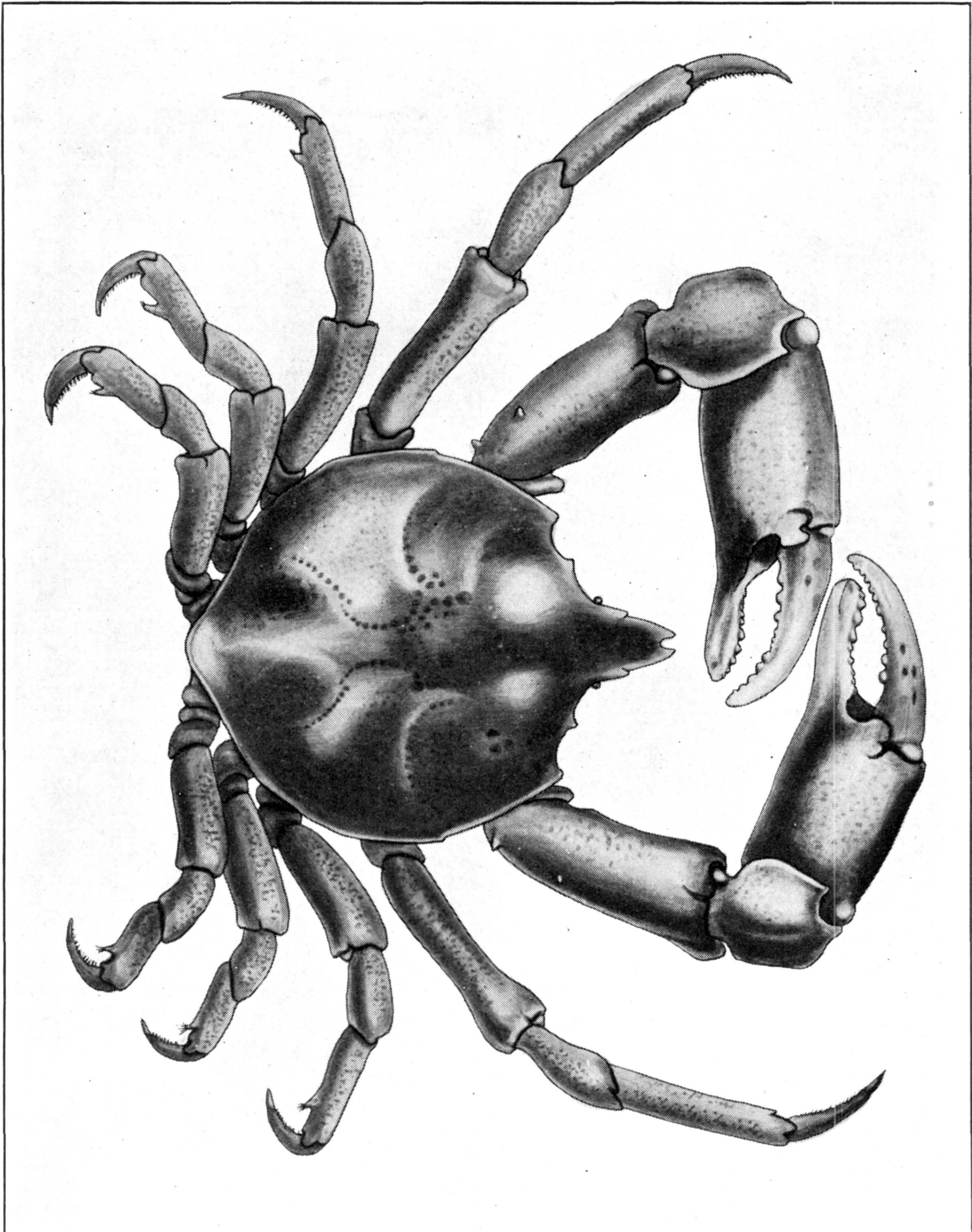
1-3. *AEPINUS SEPTEMSPINOSUS*. (PAGE 92.) 4, 5. *ARACHNOPSIS FILIPES*. (PAGE 89.) 6. *EUCINETOPS RUBELLULA*. (PAGE 86)

FOR EXPLANATION OF PLATE SEE PAGE 587



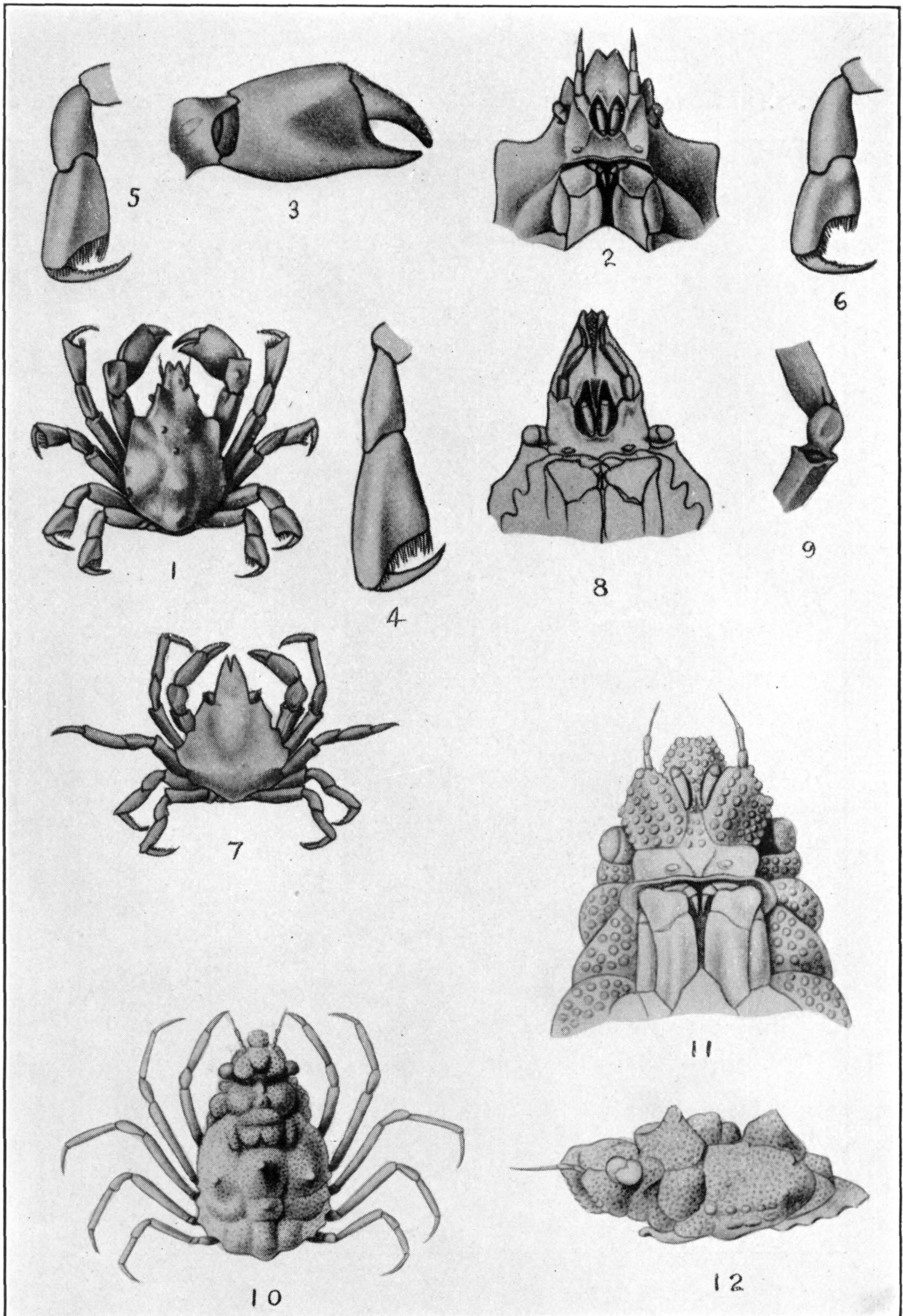
1. *EPIALTUS BRASILIENSIS*. (PAGE 149.) 2. *TALIEPUS MARGINATUS*. (PAGE 164)

FOR EXPLANATION OF PLATE SEE PAGE 587



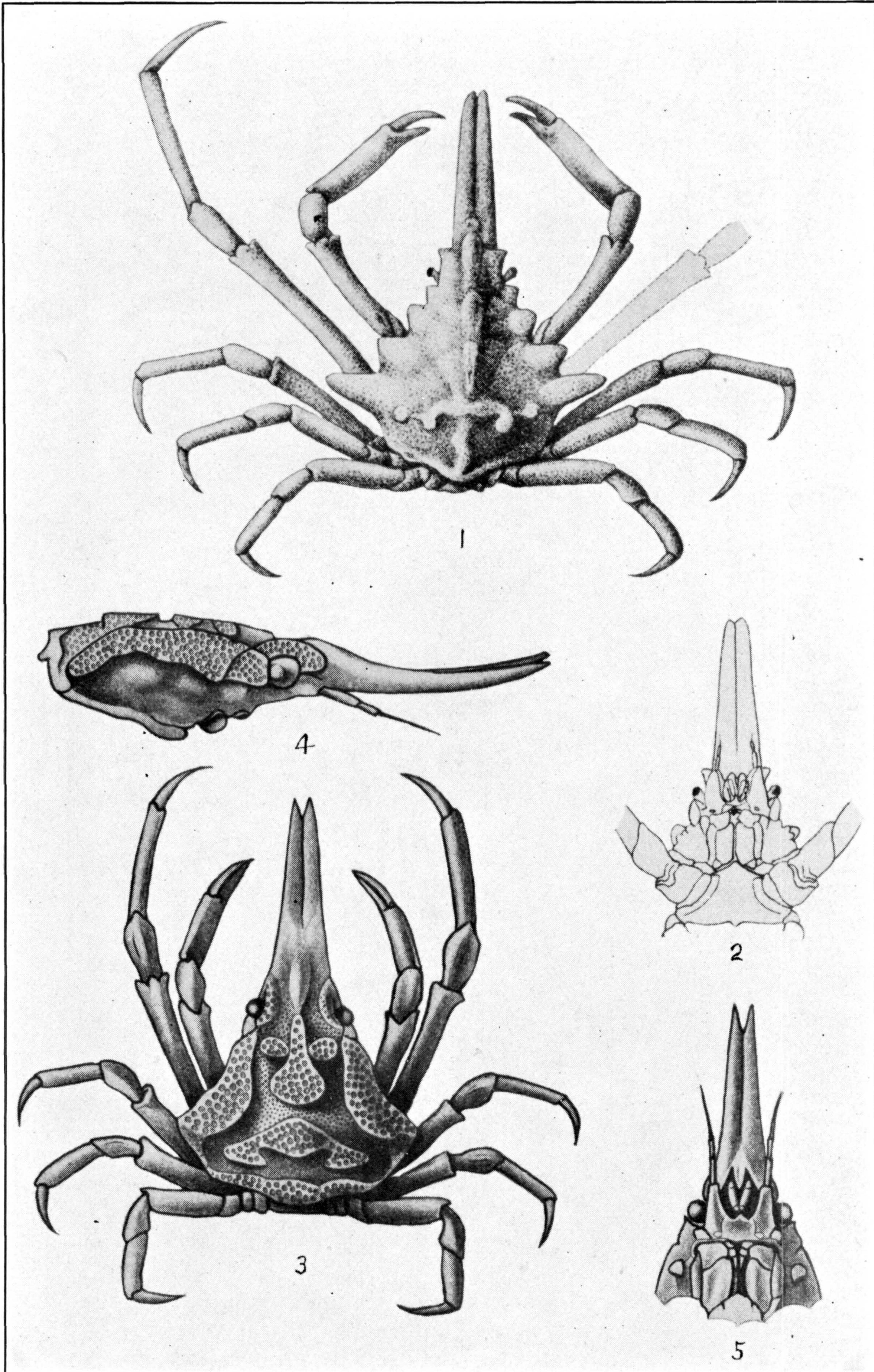
TALIEPUS MARGINATUS. (PAGE 164)

FOR EXPLANATION OF PLATE SEE PAGE 587

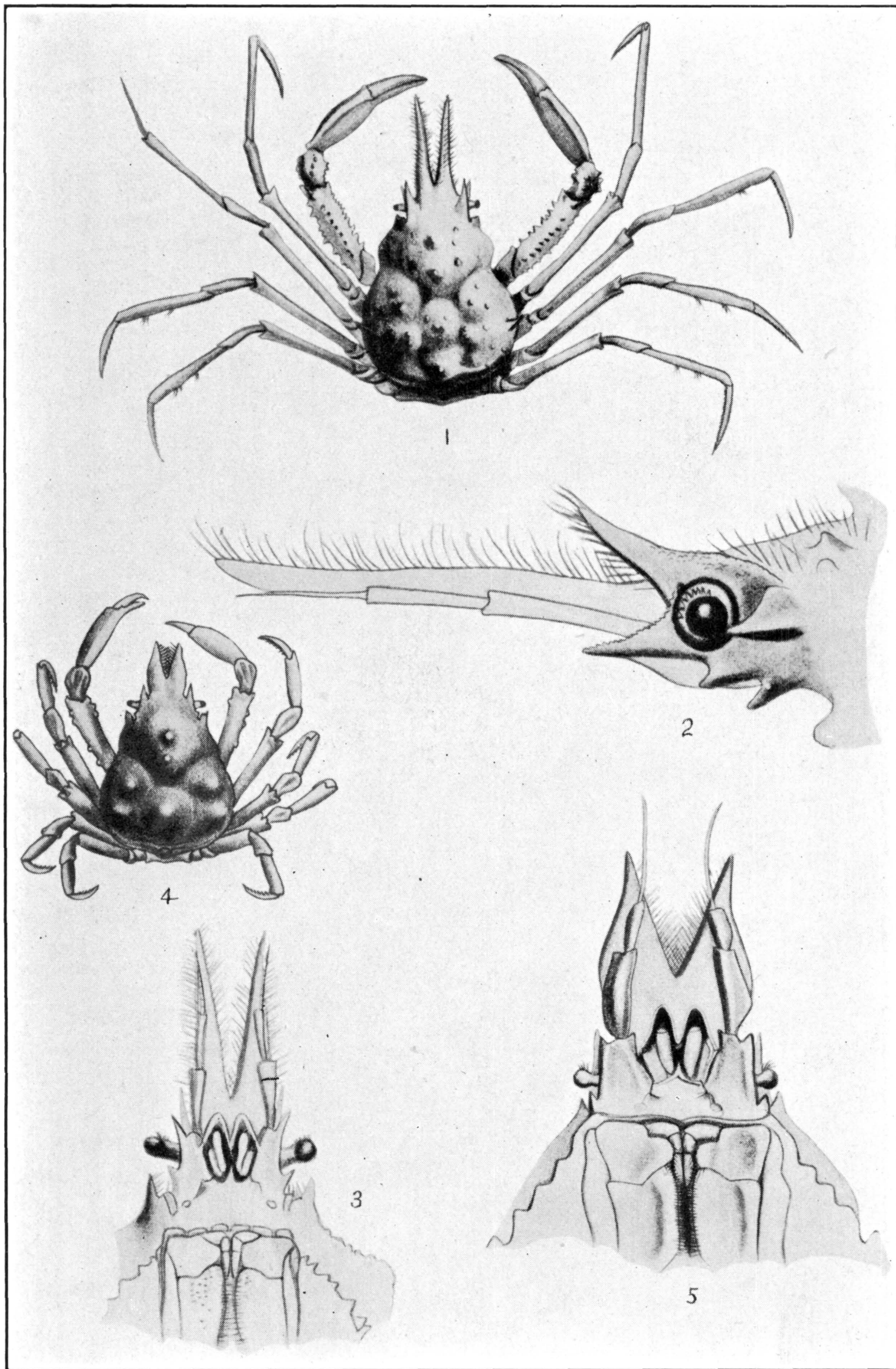


1-6. ACANTHONYX PETIVERII. (PAGE 142.) 7-9. LEUCIPPA PENTAGONA.  
(PAGE 184.) 10-12. ESOPUS CRASSUS. (PAGE 192)

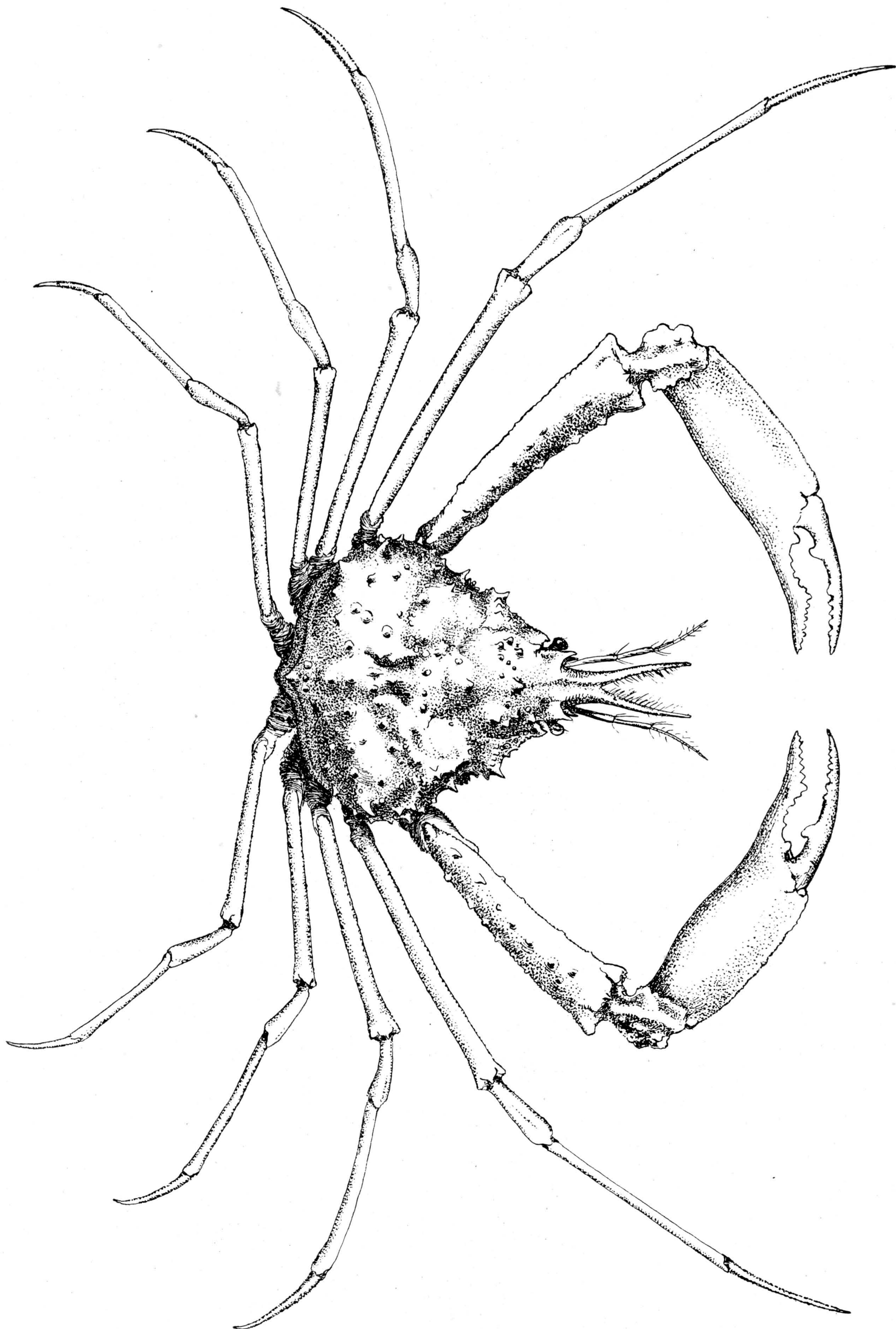
FOR EXPLANATION OF PLATE SEE PAGE 587



1, 2. SPHENOCARCINUS AGASSIZI. (PAGE 188.) 3-5. S. CORROSUS.  
(PAGE 187)

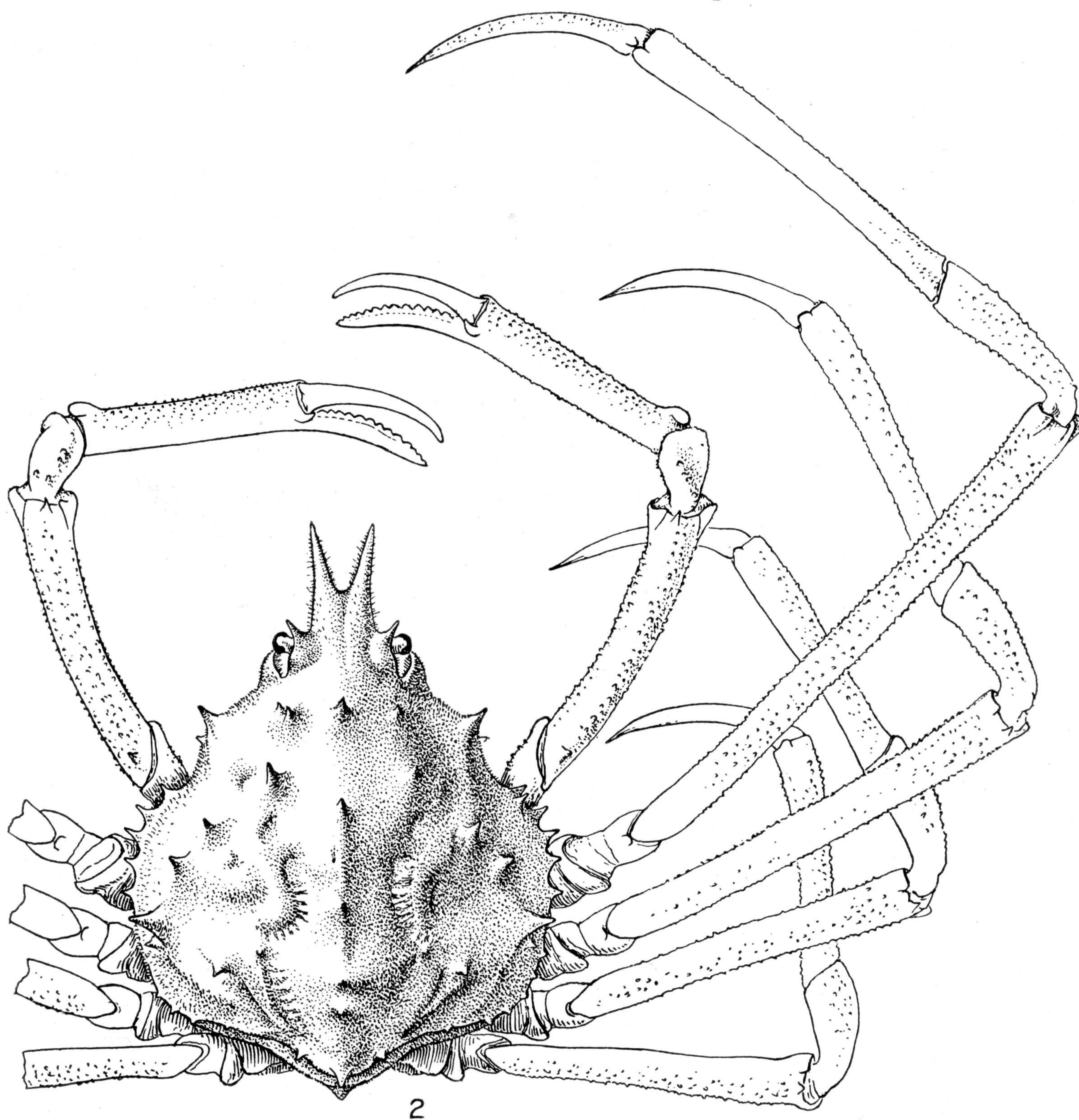
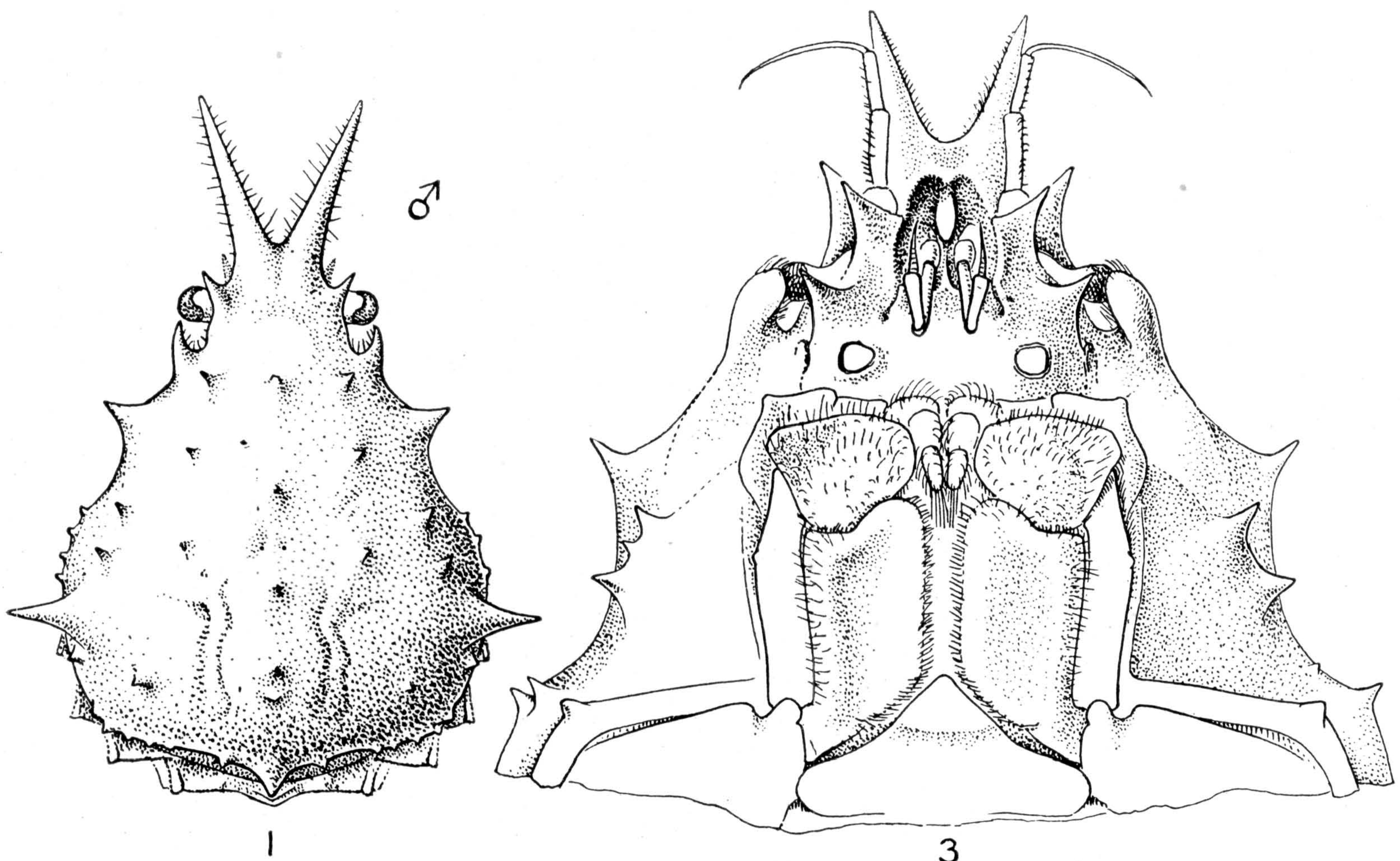


1-3. CHORILIA LONGIPES. (PAGE 203.) 4, 5. SCYRA ACUTIFRONS.  
(PAGE 195)



CHORILIA LONGIPES TURGIDA. (PAGE 203)

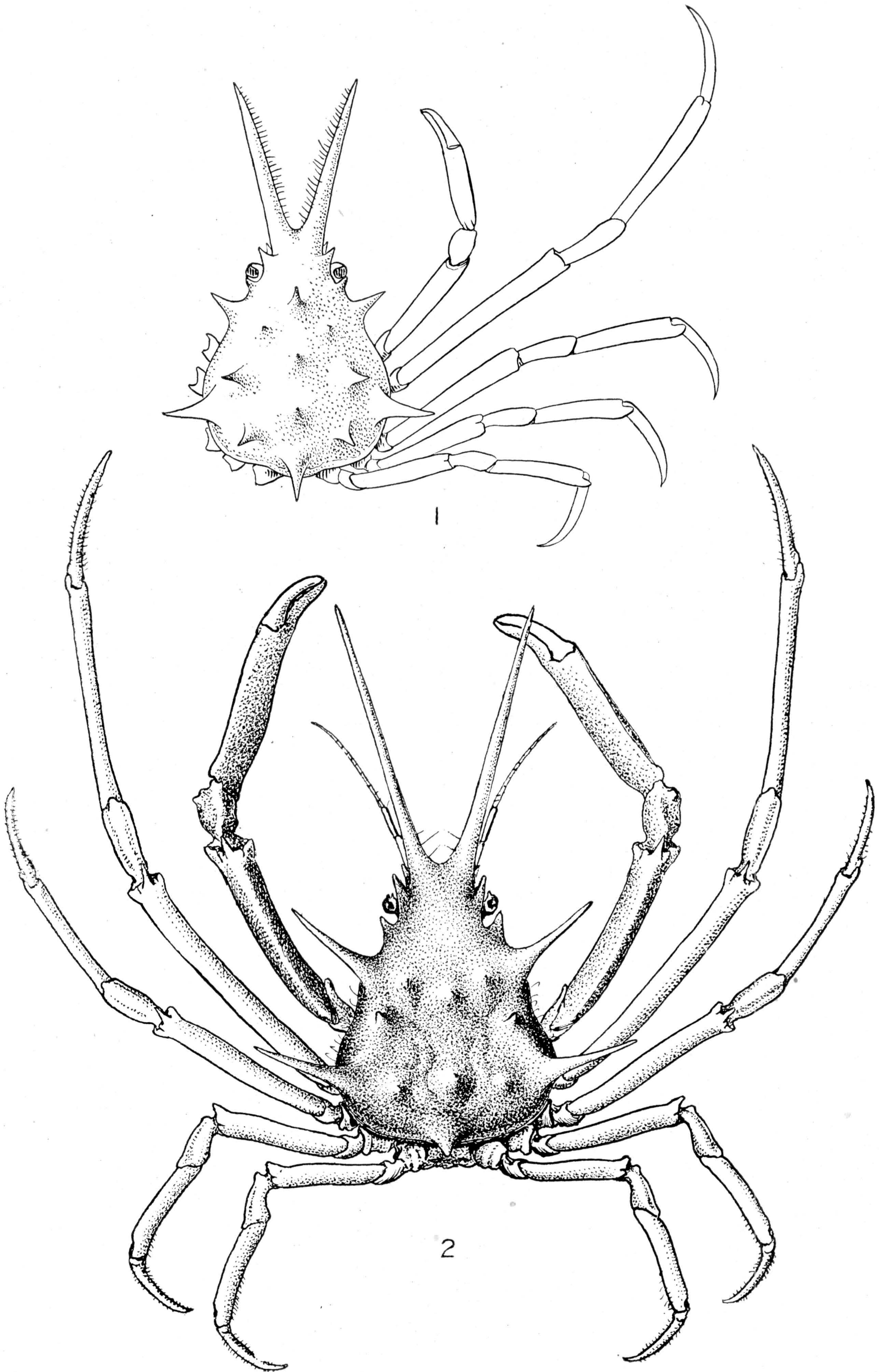
FOR EXPLANATION OF PLATE SEE PAGE 588



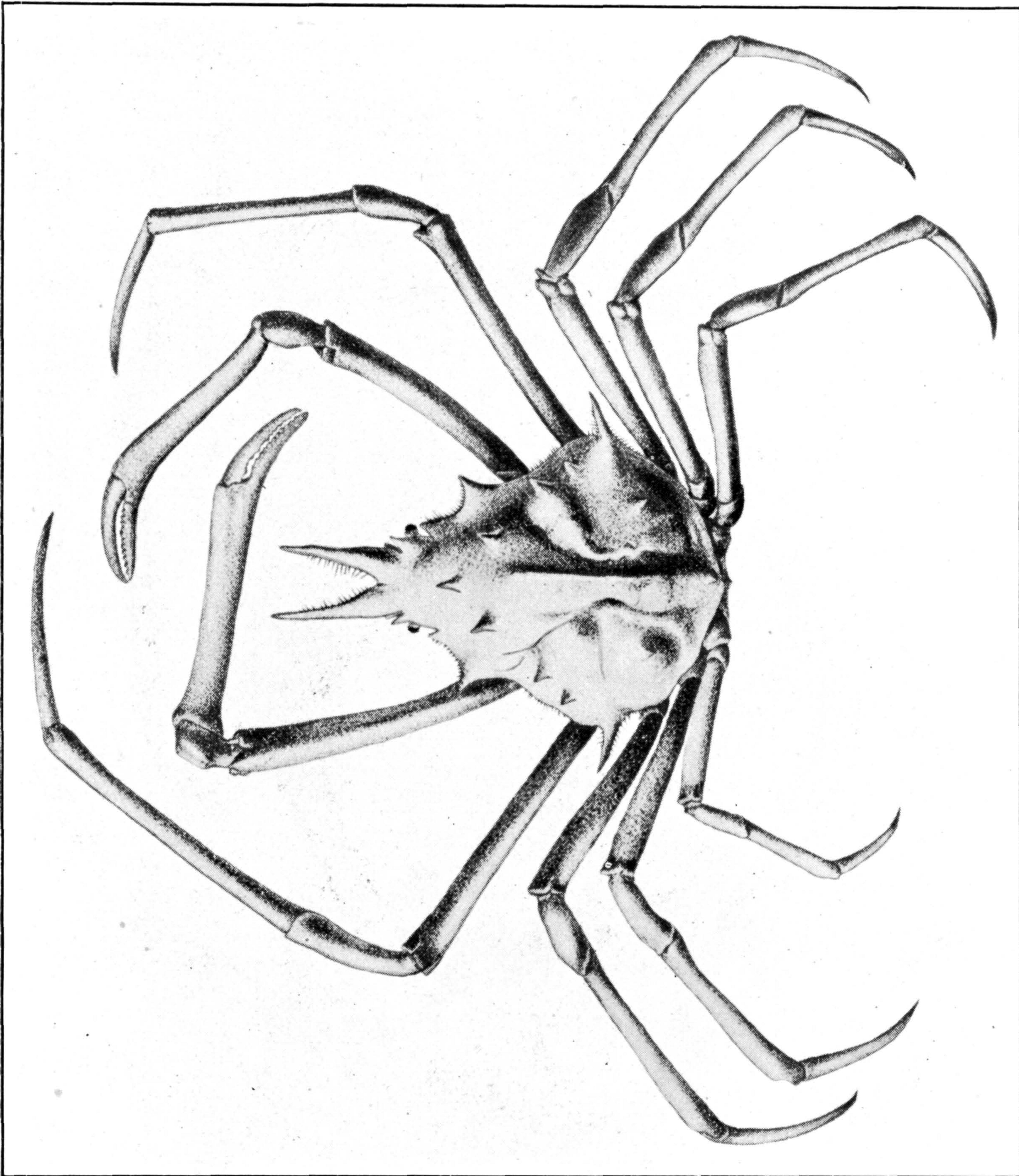
ROCHINIA CRASSA. (PAGE 210)

FOR EXPLANATION OF PLATE SEE PAGE 588



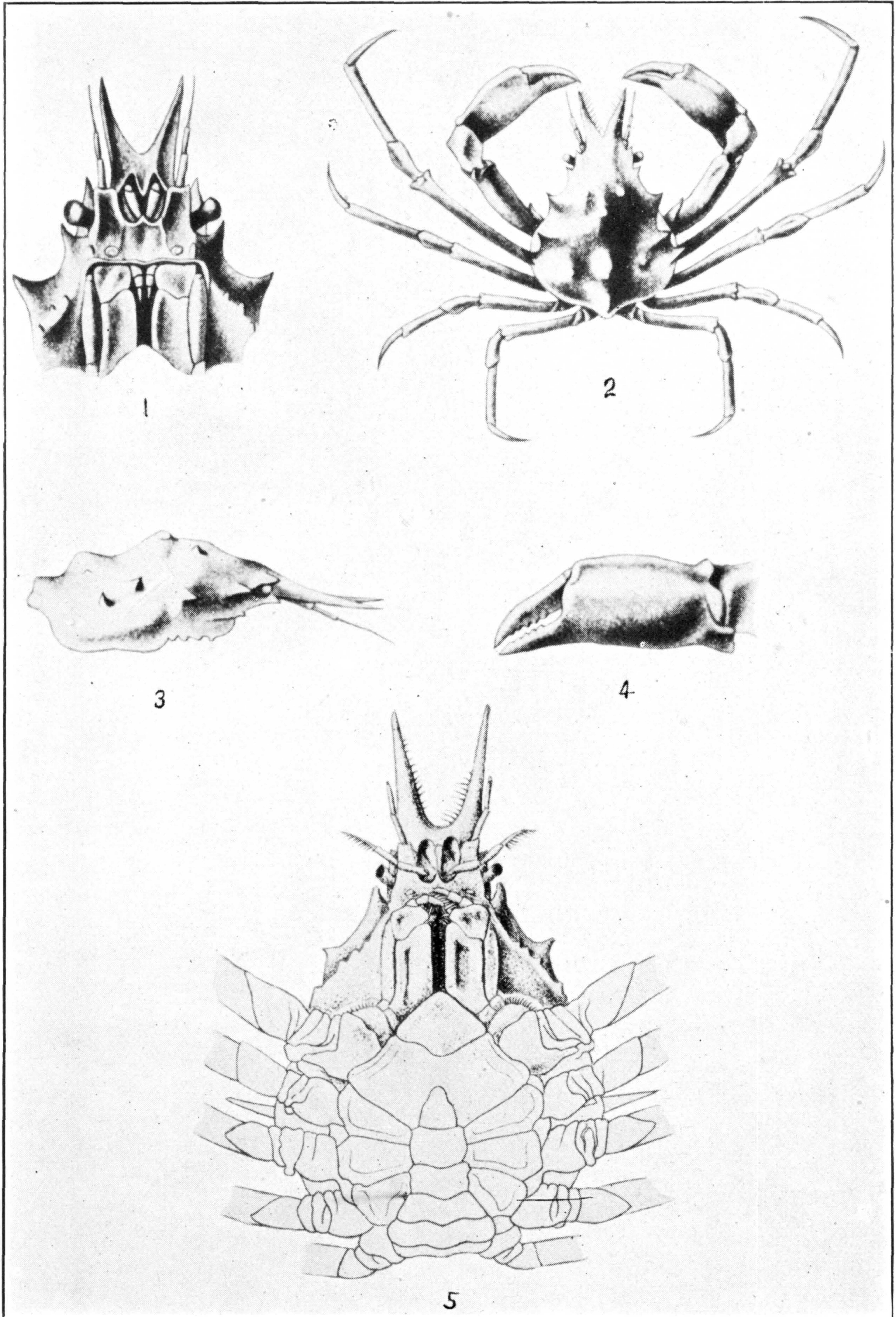


1. *ROCHINIA TANNERI*. (PAGE 216.) 2. *R. CORNUTA*. (PAGE 217)

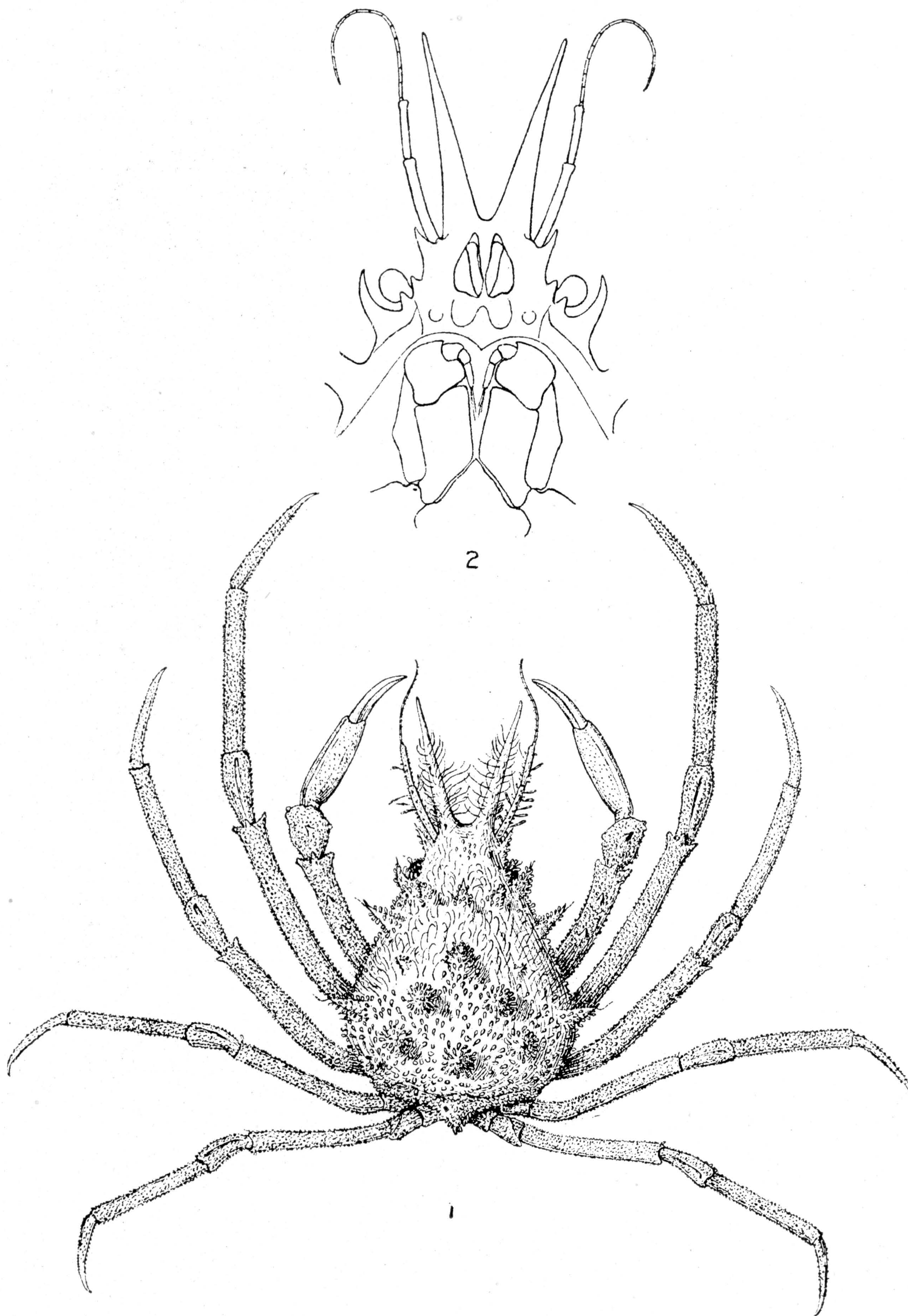


ROCHINIA OCCIDENTALIS. (PAGE 220)

FOR EXPLANATION OF PLATE SEE PAGE 588

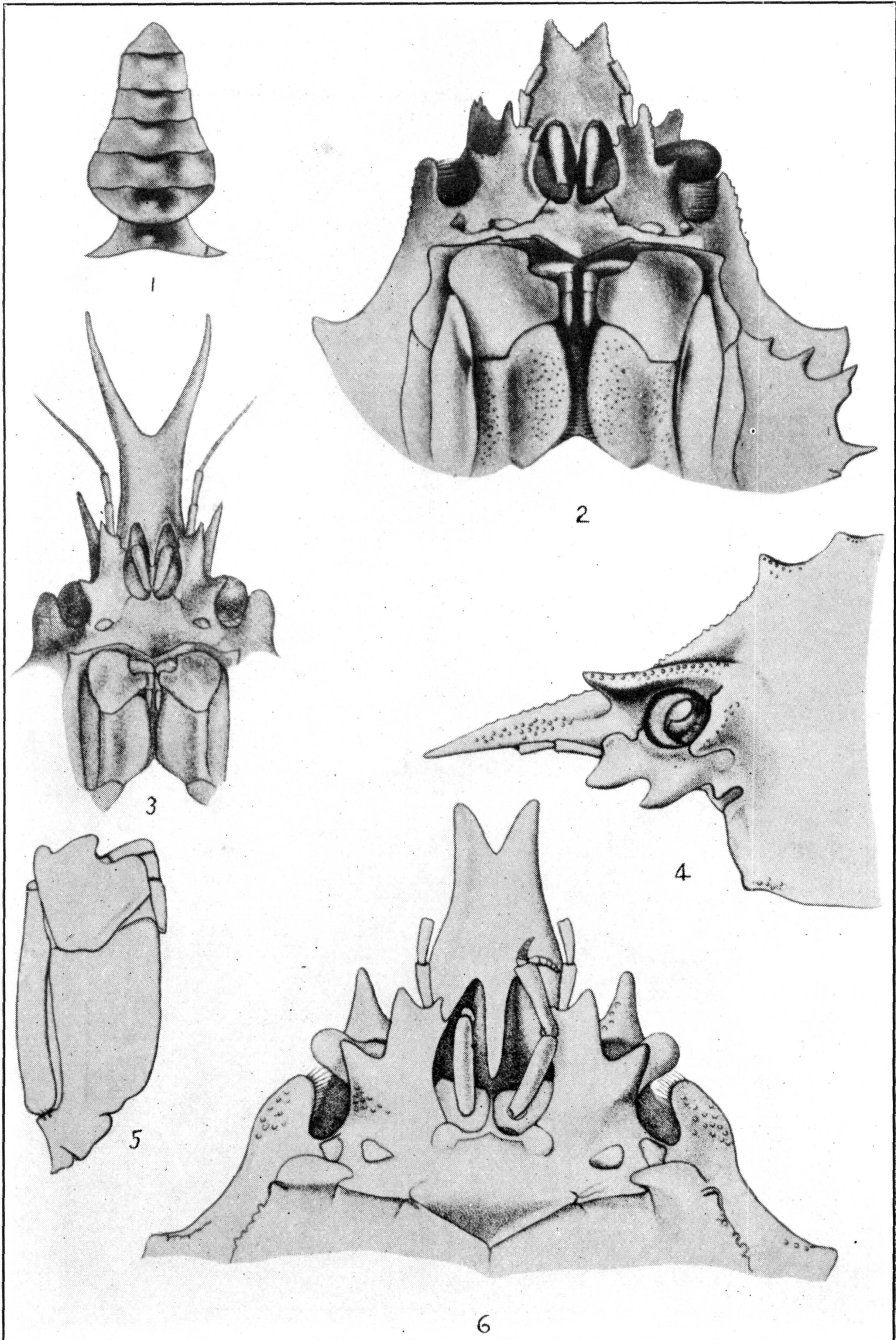


1-4. *ROCHINIA GRACILIPES*. (PAGE 218.) 5. *R. OCCIDENTALIS*. (PAGE 220)



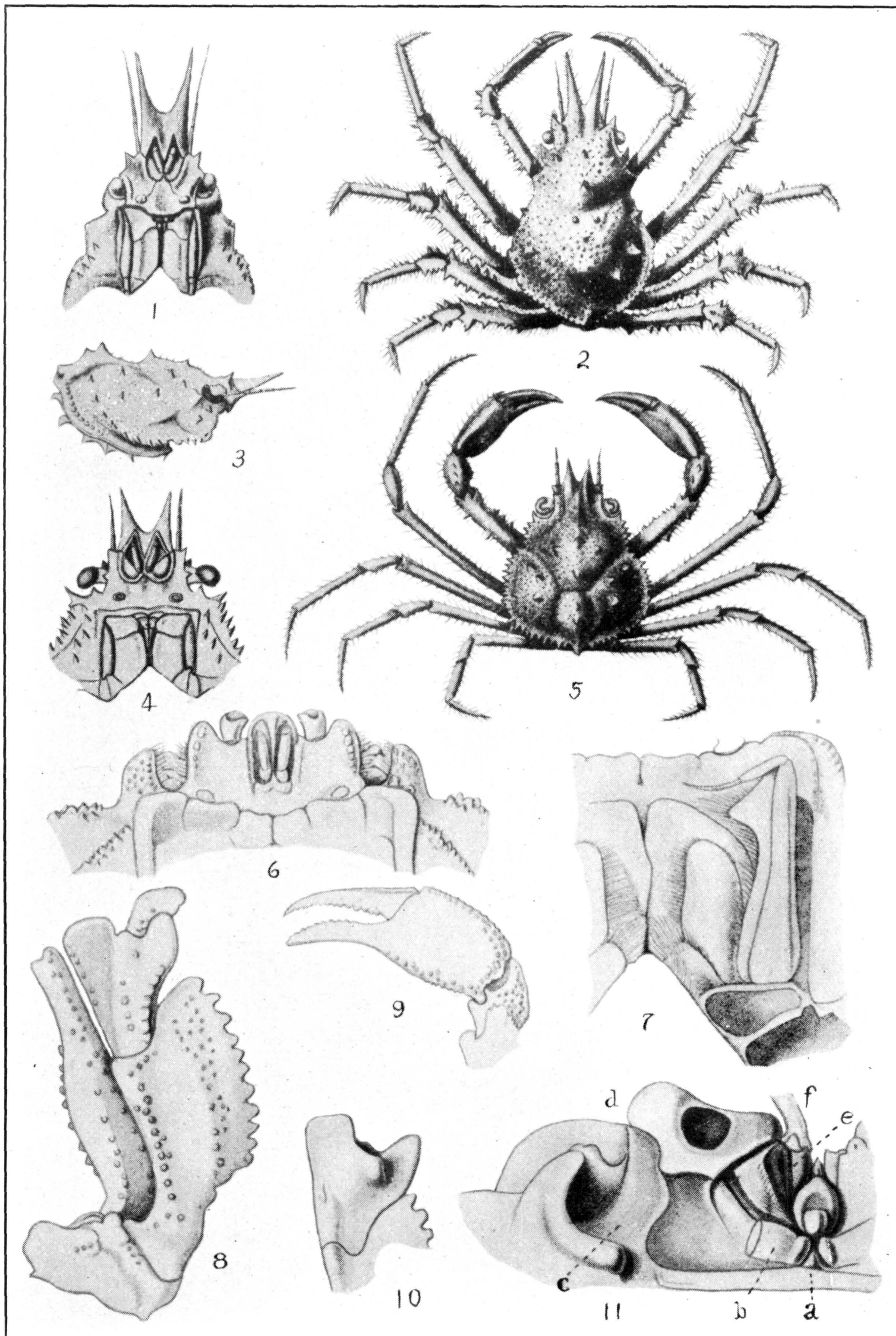
ROCHINIA VESICULARIS. (PAGE 221)

FOR EXPLANATION OF PLATE SEE PAGE 588



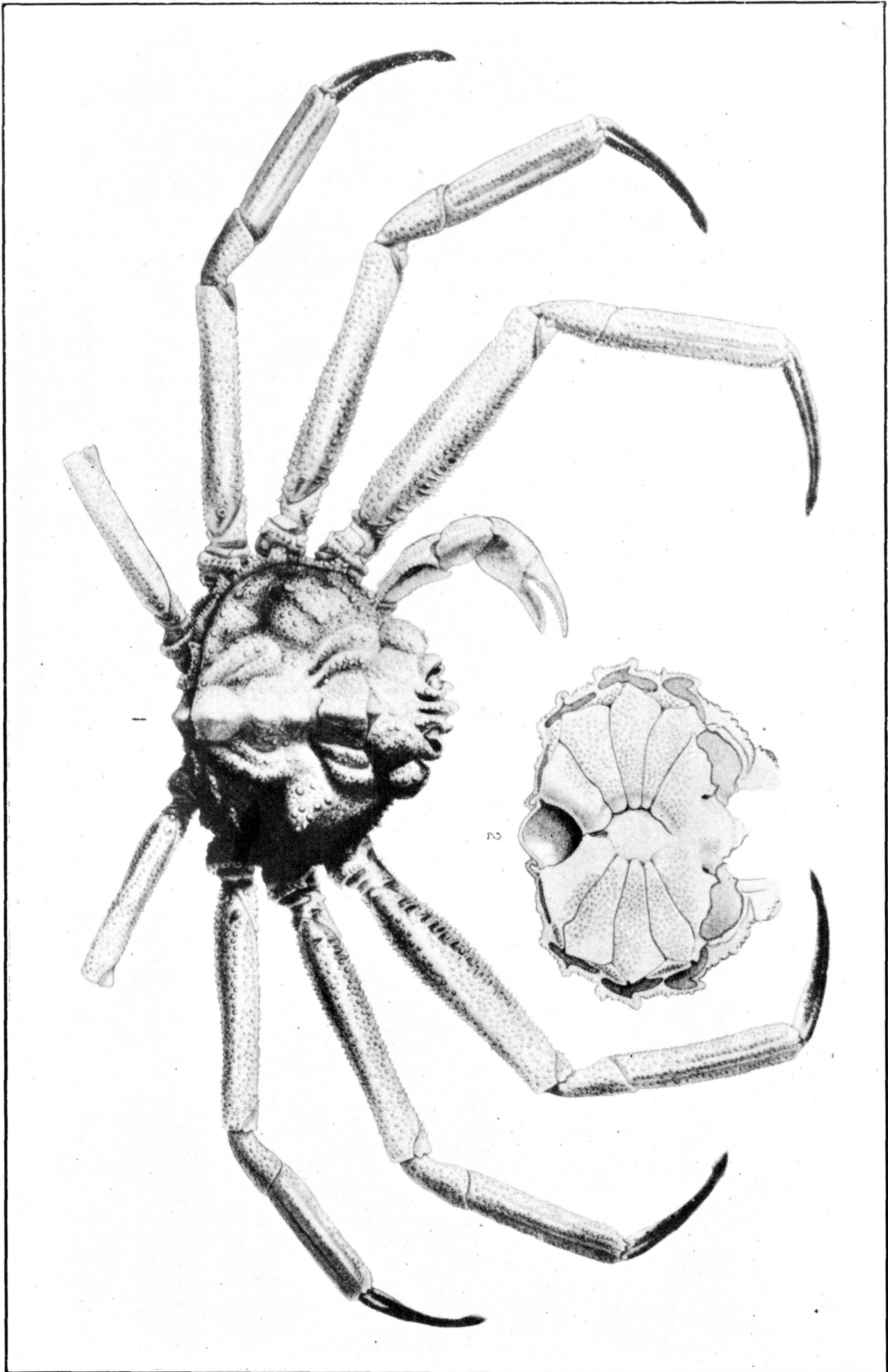
1, 2, 4-6. LIBIDOCLAEA GRANARIA. (PAGE 224.) 3. L. SMITHII. (PAGE 226)

FOR EXPLANATION OF PLATE SEE PAGES 588 AND 559



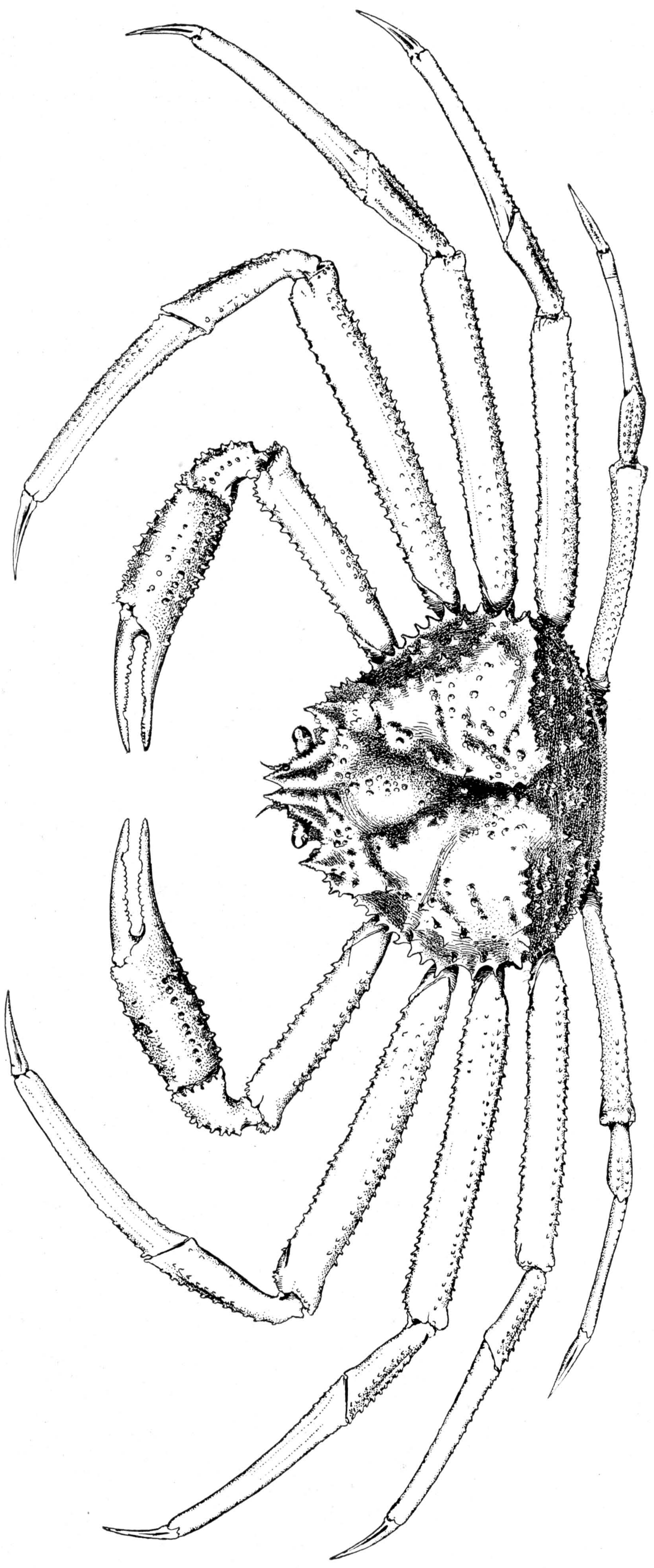
1, 2. *OPLOPISA SPINIPES*. (PAGE 228.) 3-5. *TRACHYMAIA CORNUTA*. (PAGE 229.) 6-11. *LEUROCYCLUS TUBERCULOSUS*. (PAGE 230)

FOR EXPLANATION OF PLATE SEE PAGE 589



LEUROCYCLUS TUBERCULATUS. (PAGE 230)

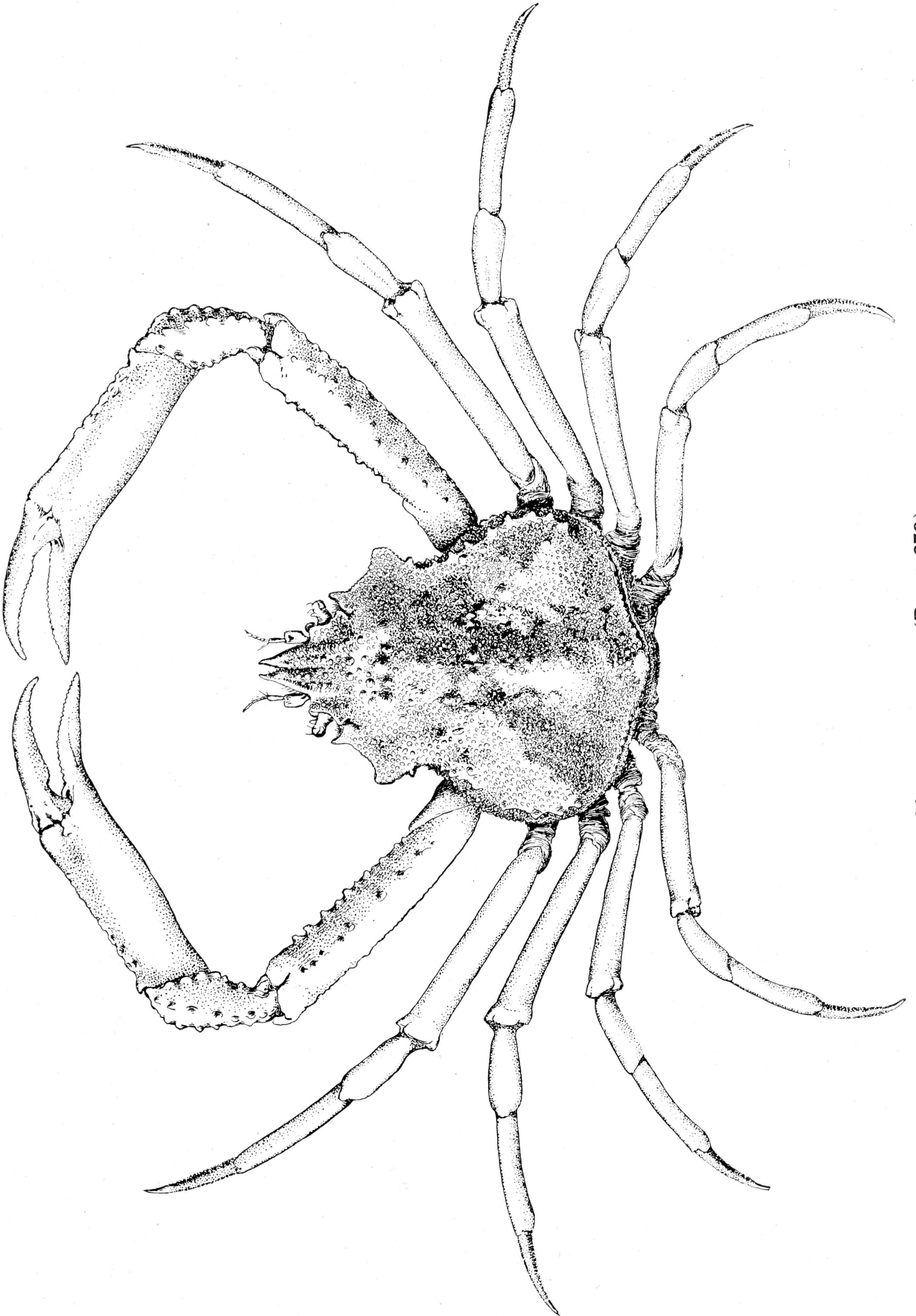
FOR EXPLANATION OF PLATE SEE PAGE 589



CHIONOECETES TANNERI. (PAGE 243)

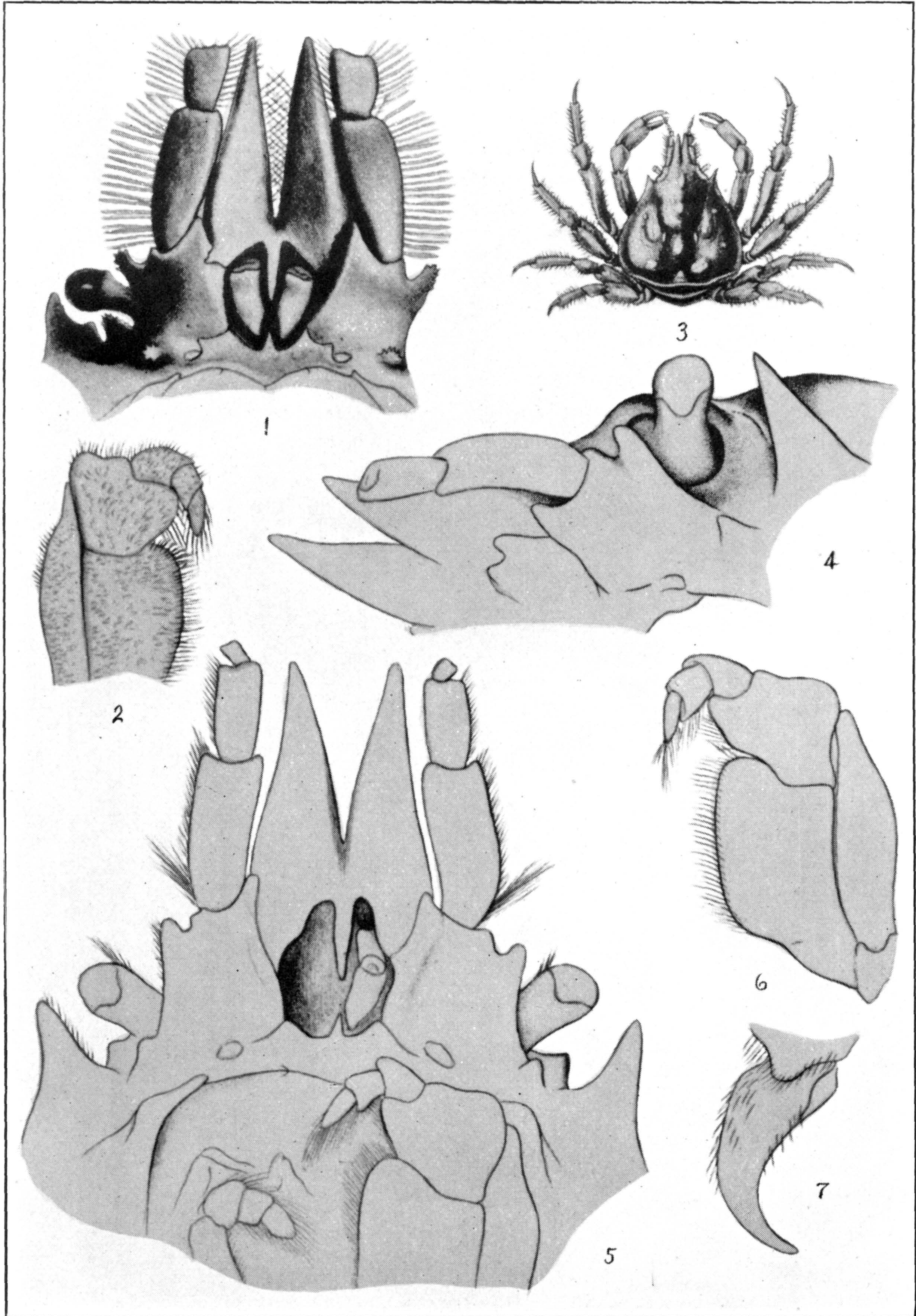
FOR EXPLANATION OF PLATE SEE PAGE 589





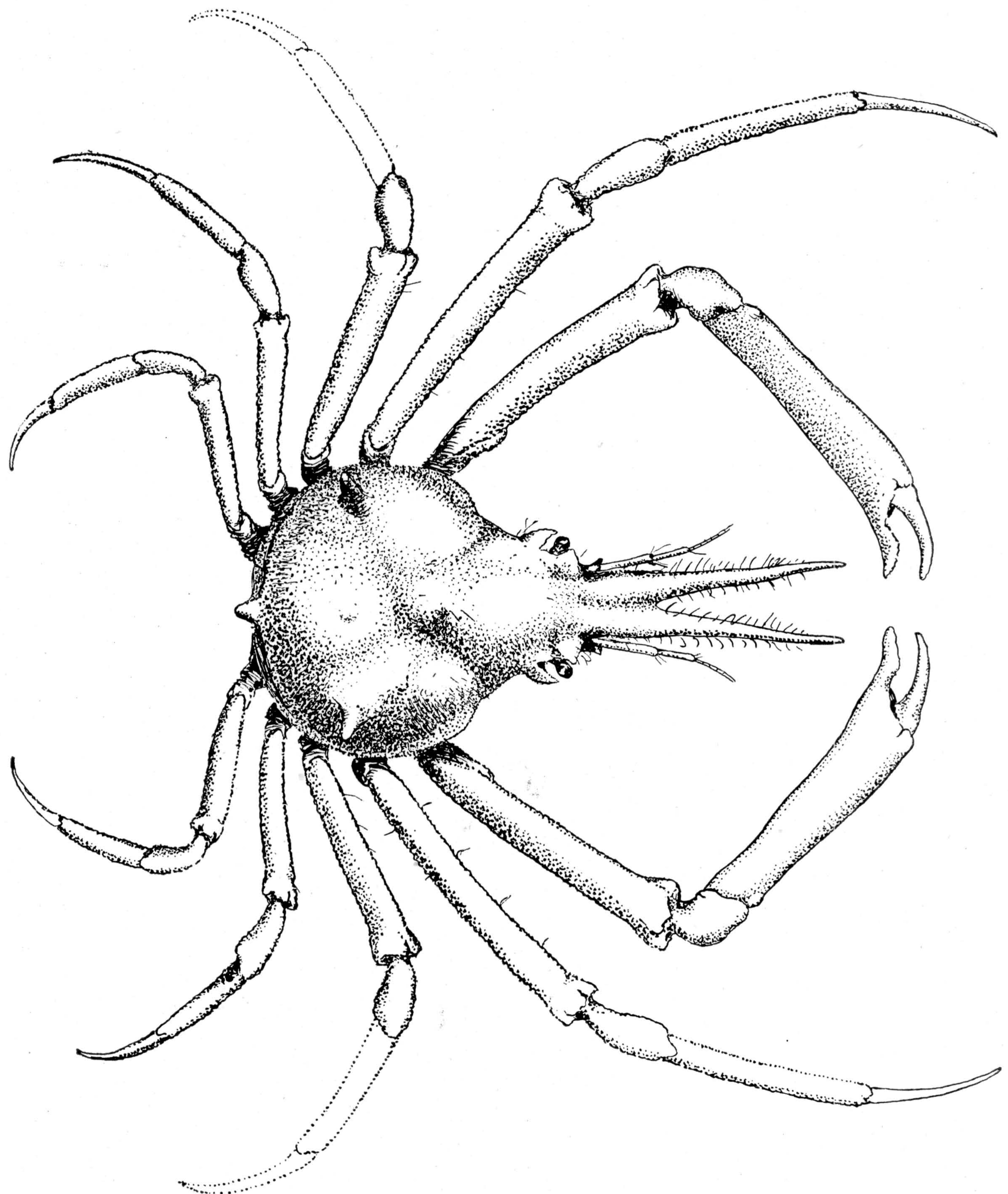
HYAS LYRATUS. (PAGE 270)

FOR EXPLANATION OF PLATE SEE PAGE 589



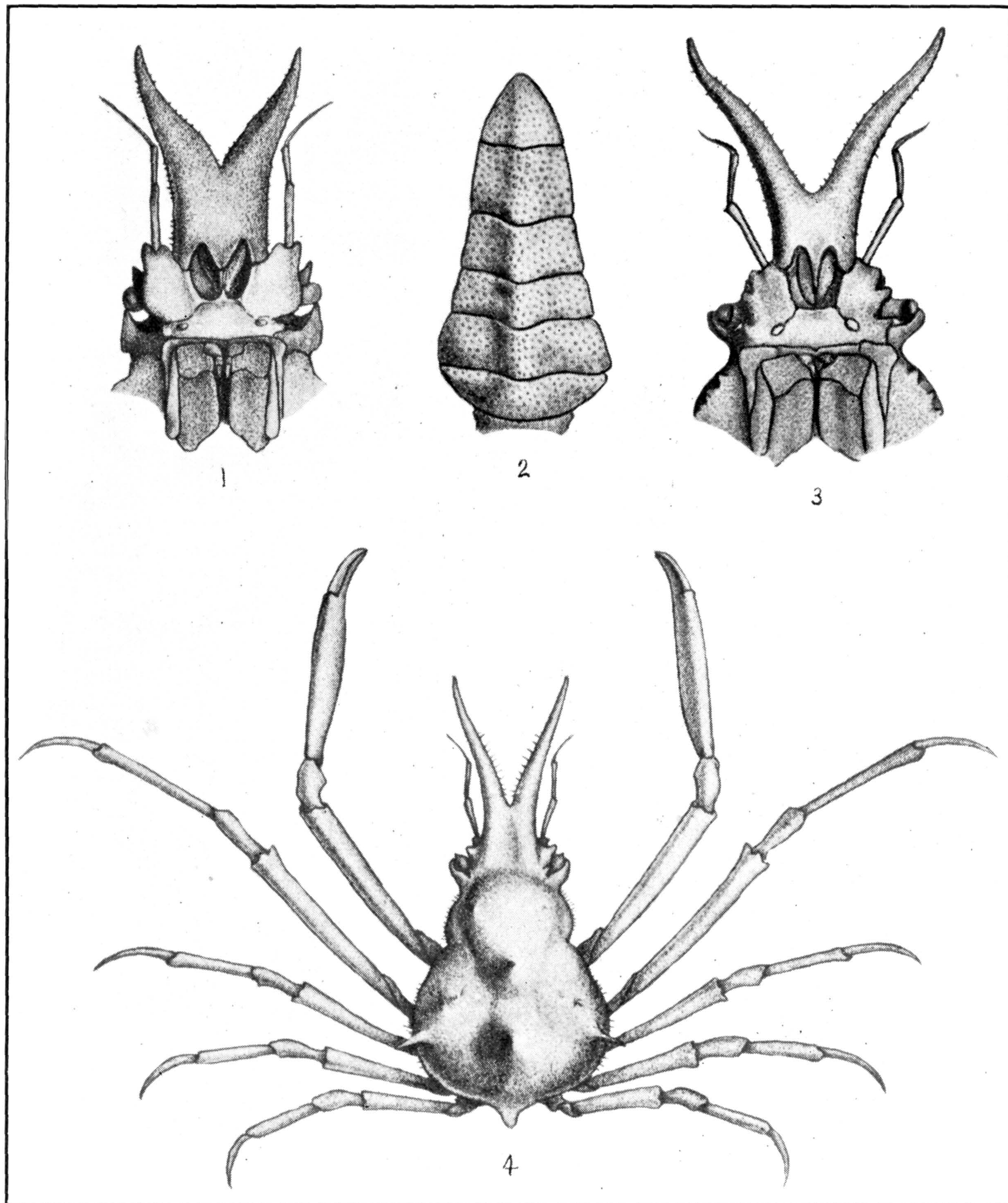
PISOIDES EDWARDSII. (PAGE 285)

FOR EXPLANATION OF PLATE SEE PAGE 589



*NOTOLOPAS BRASILIENSIS.* (PAGE 288)

FOR EXPLANATION OF PLATE SEE PAGE 590



1. *NOTOLOPAS LAMELLATUS*. (PAGE 287.) 2-4. *N. BRASILIENSIS*.  
(PAGE 288)

FOR EXPLANATION OF PLATE SEE PAGE 590