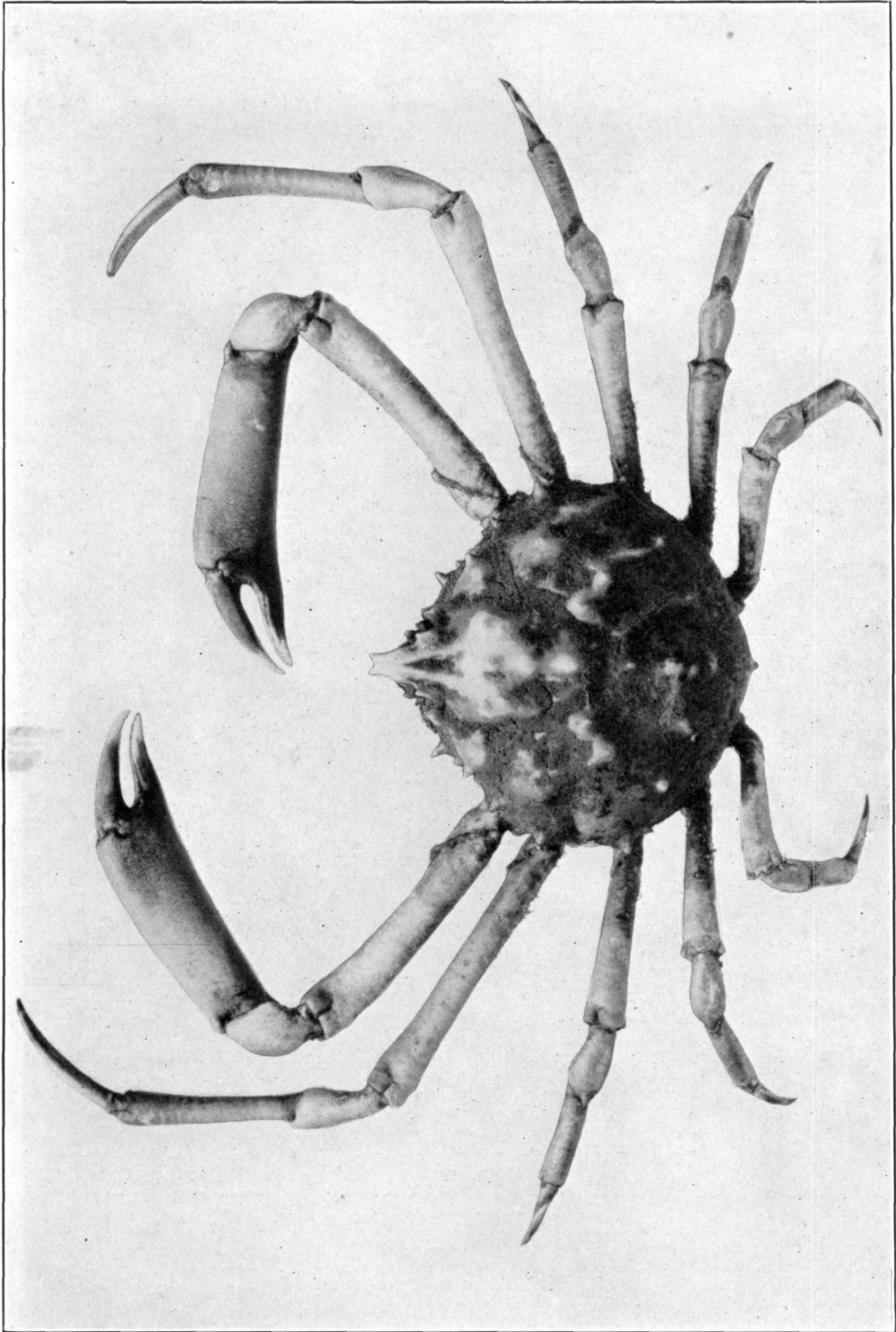




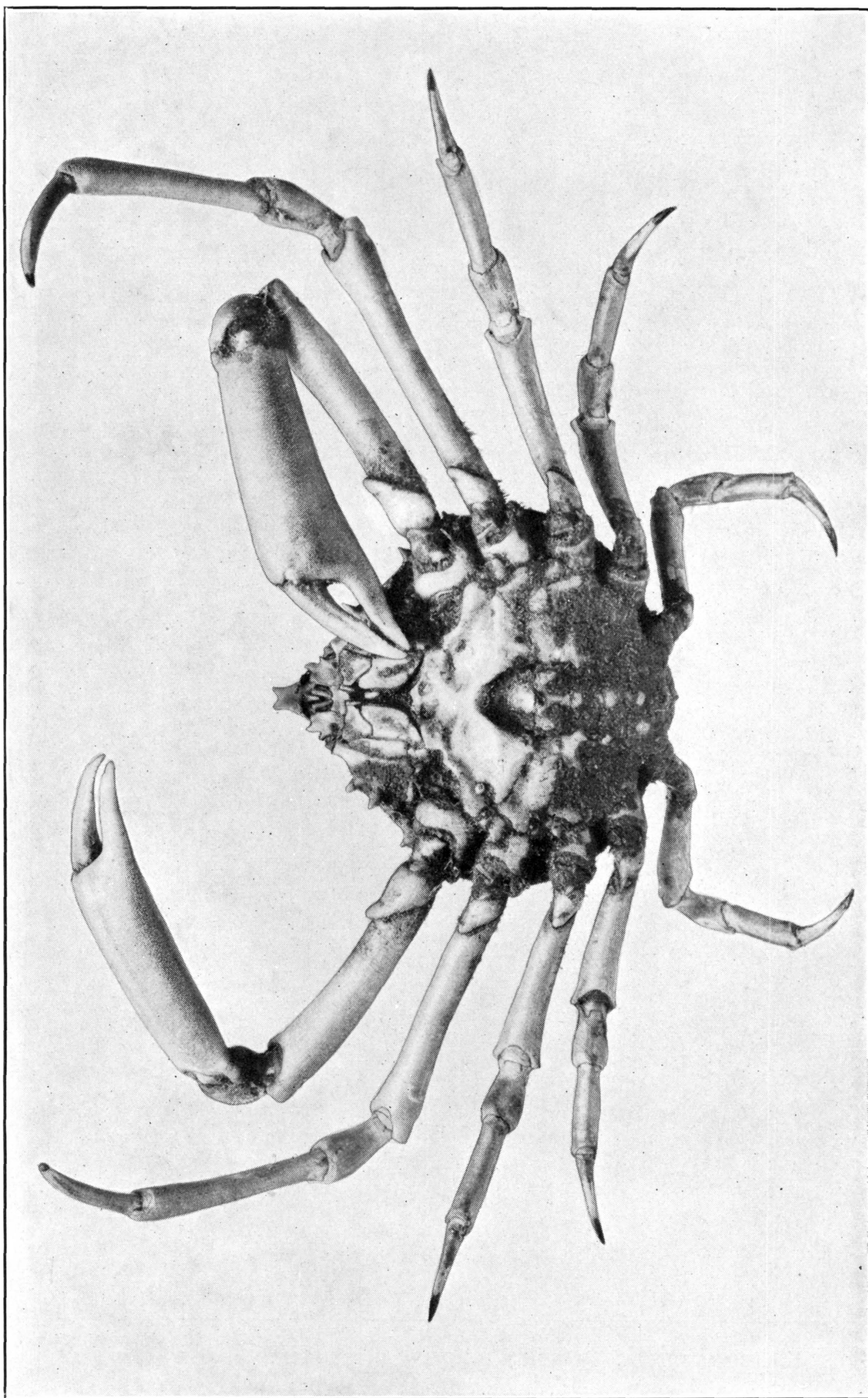
LIBINIA FERREIRAE. (PAGE 324)

FOR EXPLANATION OF PLATE SEE PAGE 576



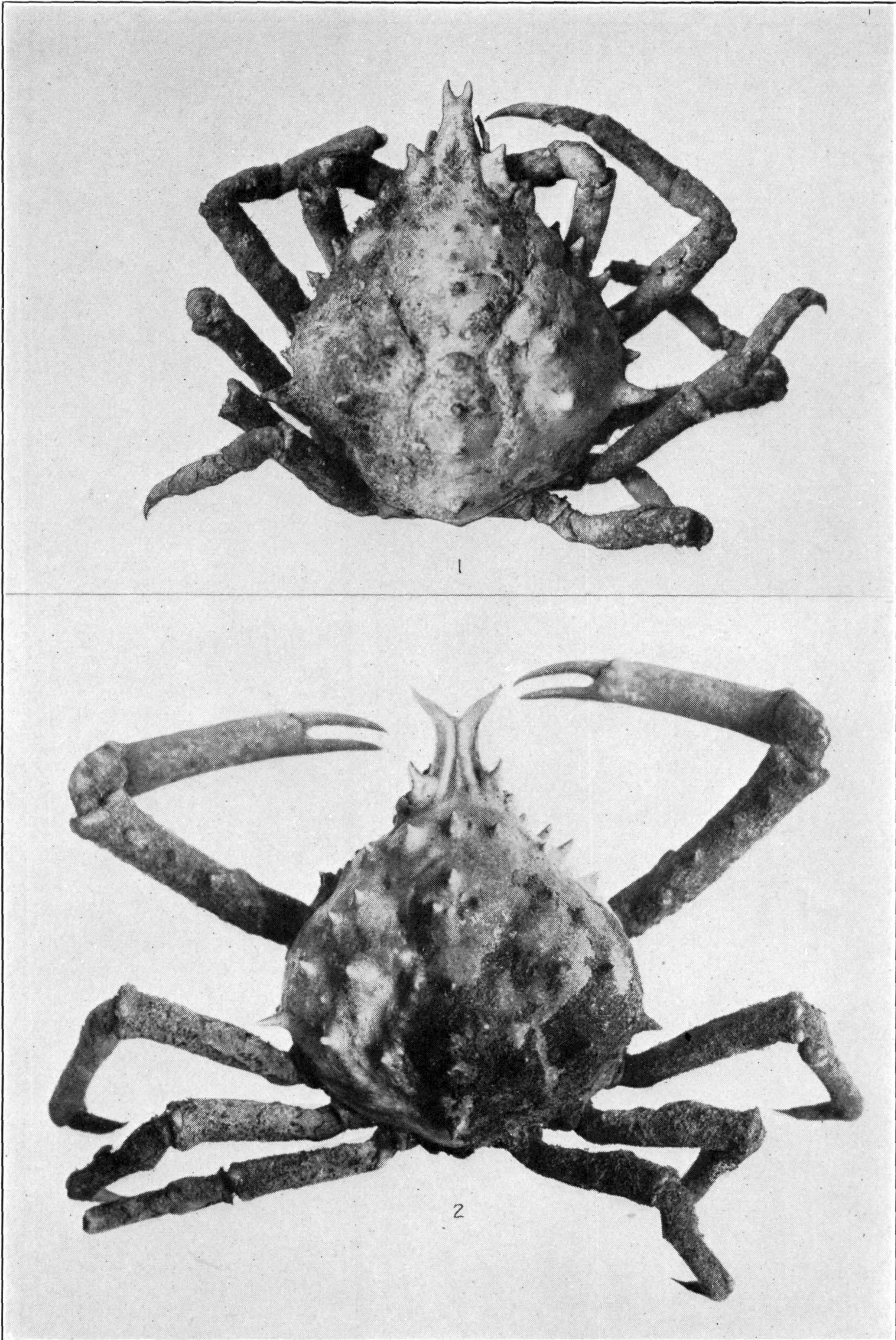
LIBINIAS PINOSA. (PAGE 325)

FOR EXPLANATION OF PLATE SEE PAGE 576



LIBINIA SPINOSA. (PAGE 325)

FOR EXPLANATION OF PLATE SEE PAGE 576



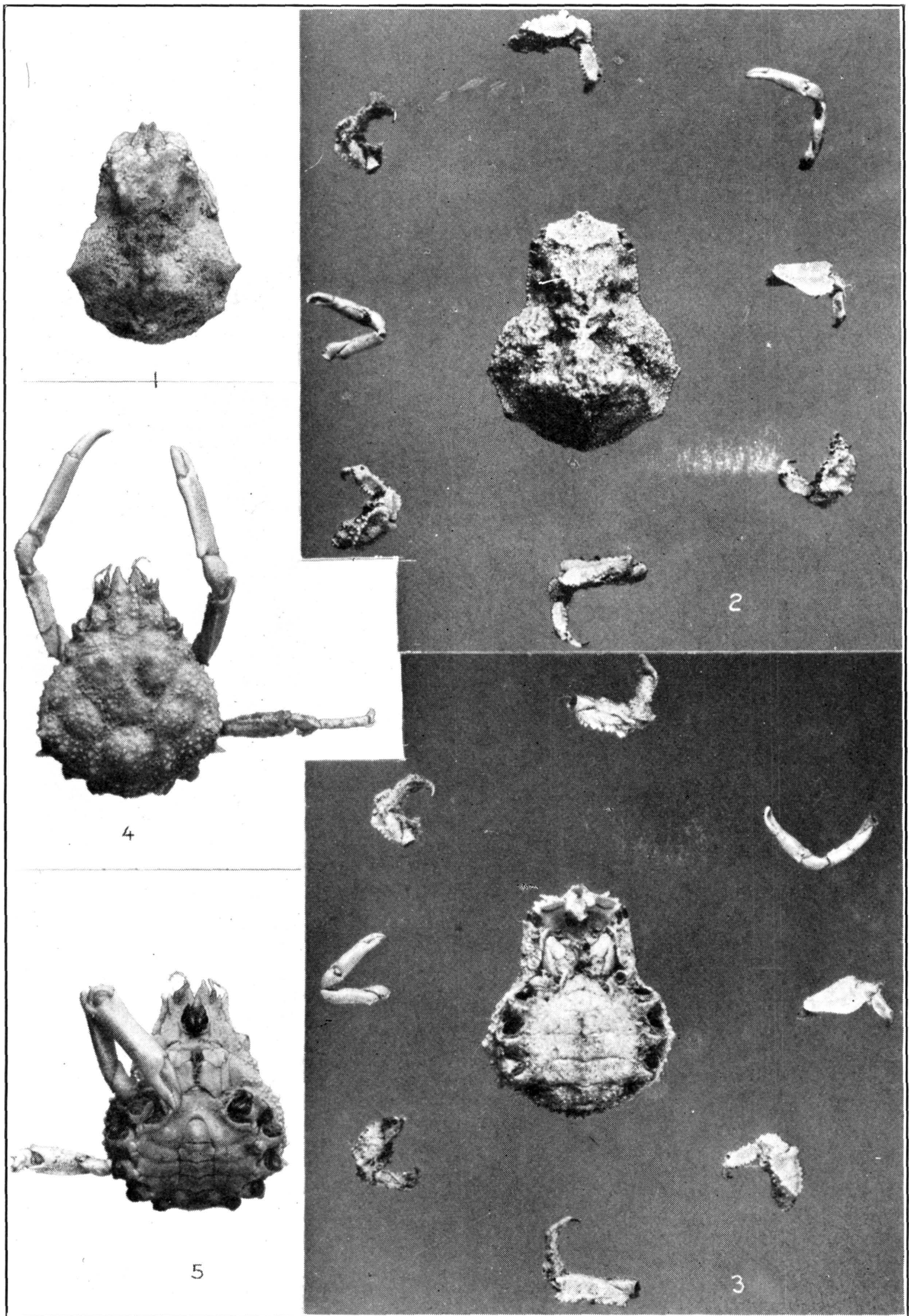
1. *LIBINIA DUBIA*. (PAGE 313.) 2. *L. ROSTRATA*. (PAGE 329)

FOR EXPLANATION OF PLATE SEE PAGE 576



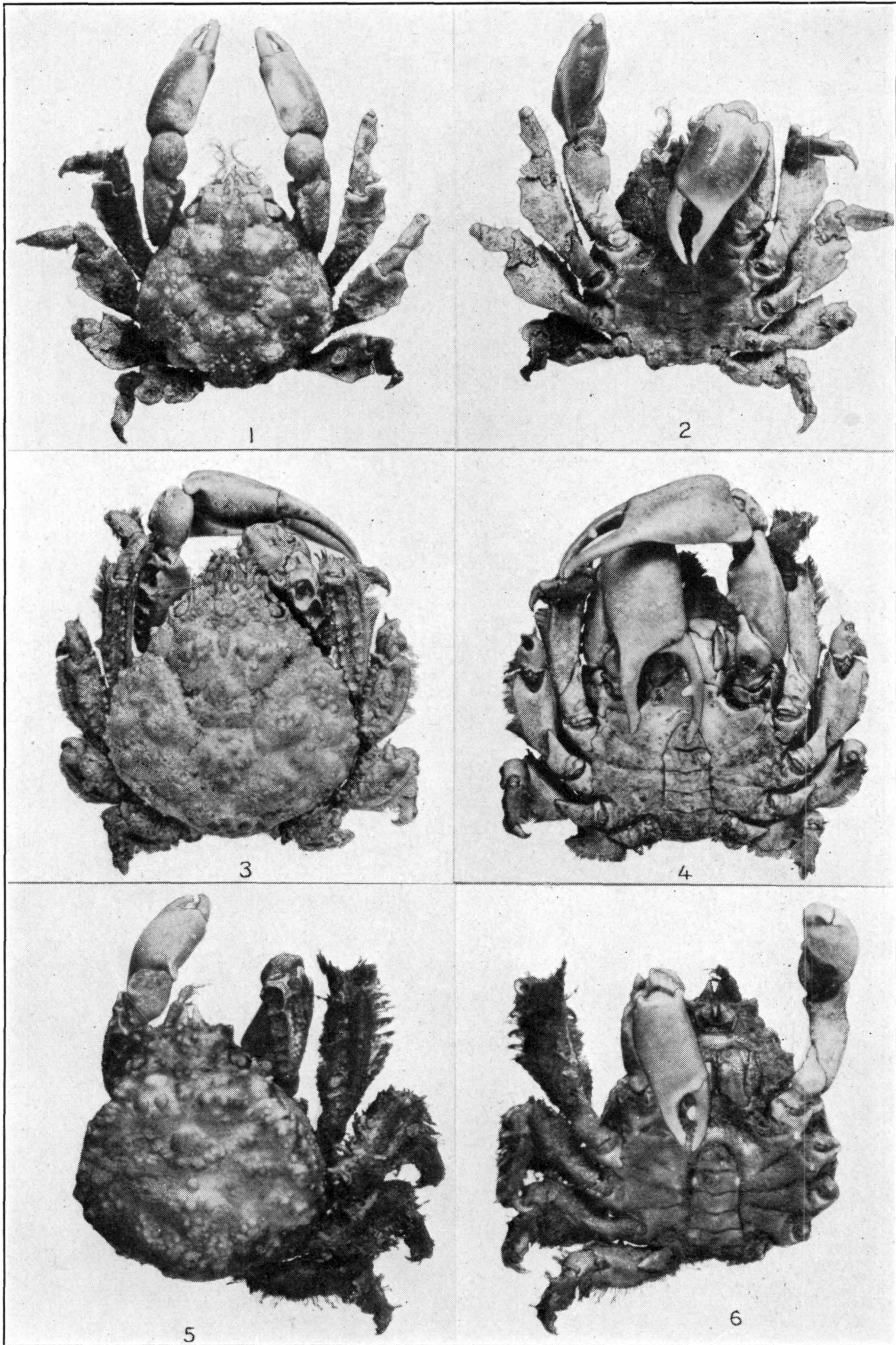
PARAMITHRAX BÄCKSTRÖMI. (PAGE 339)

FOR EXPLANATION OF PLATE SEE PAGE 576



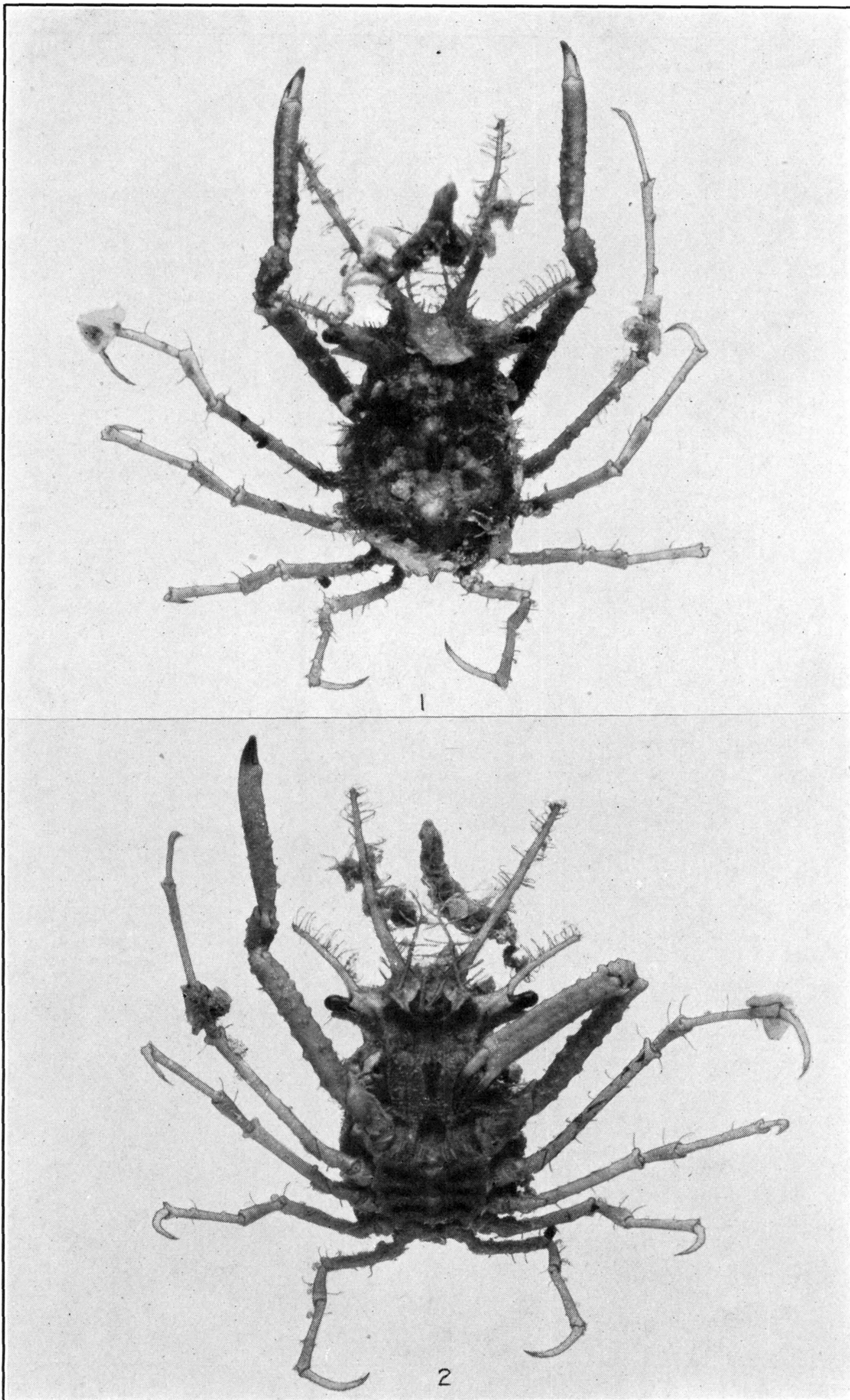
1. HEMUS CRISTULIPES. (PAGE 345.) 2, 3. H. ANALOGUS. (PAGE 347.)
4, 5. THOE ASPERA. (PAGE 352)

FOR EXPLANATION OF PLATE SEE PAGE 576



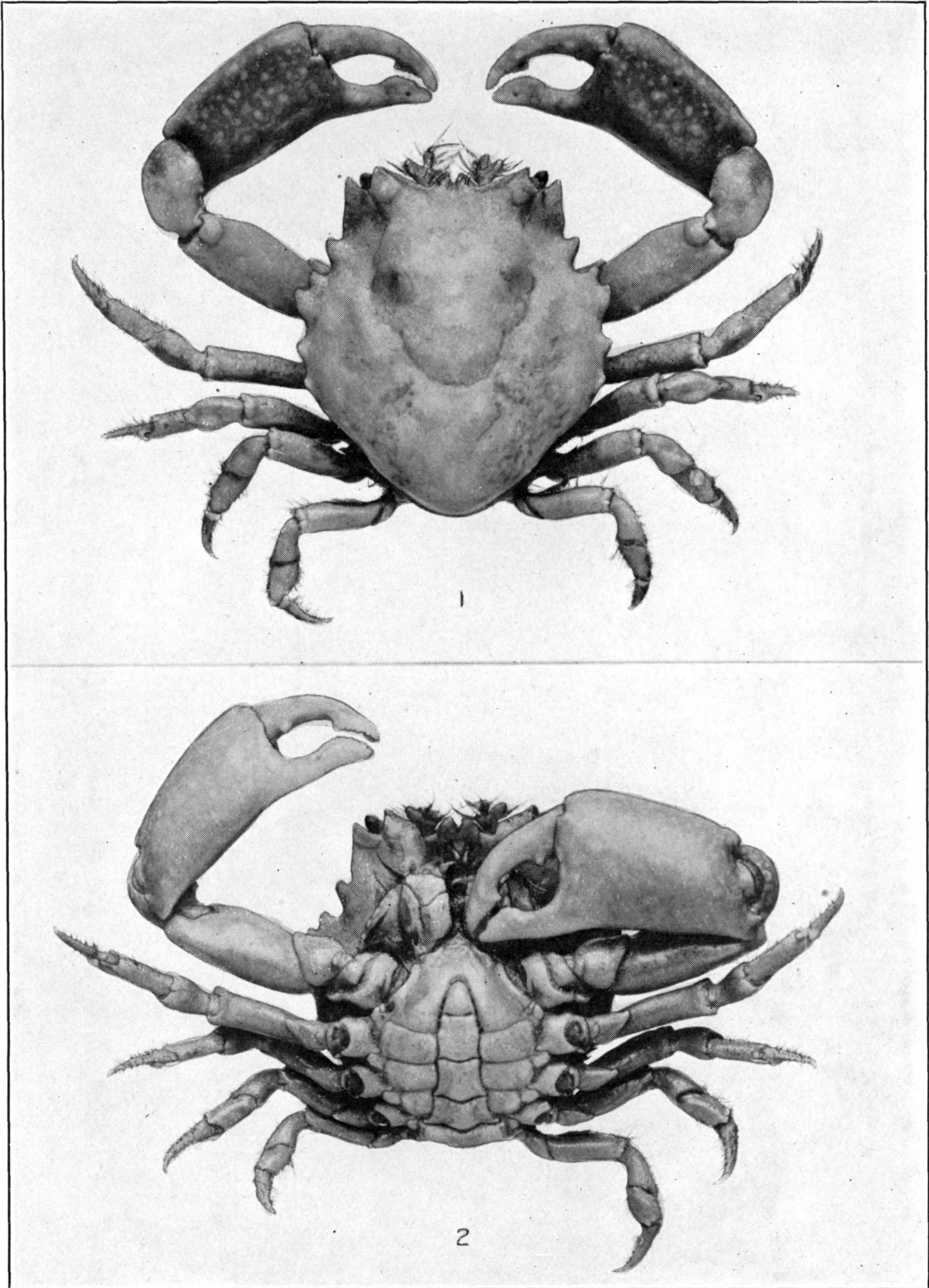
1, 2. *THOE PUELLA*. (PAGE 348.) 3, 4. *T. SULCATA*. (PAGE 349.) 5, 6. *T. PANAMENSIS*. (PAGE 351)

FOR EXPLANATION OF PLATE SEE PAGE 576



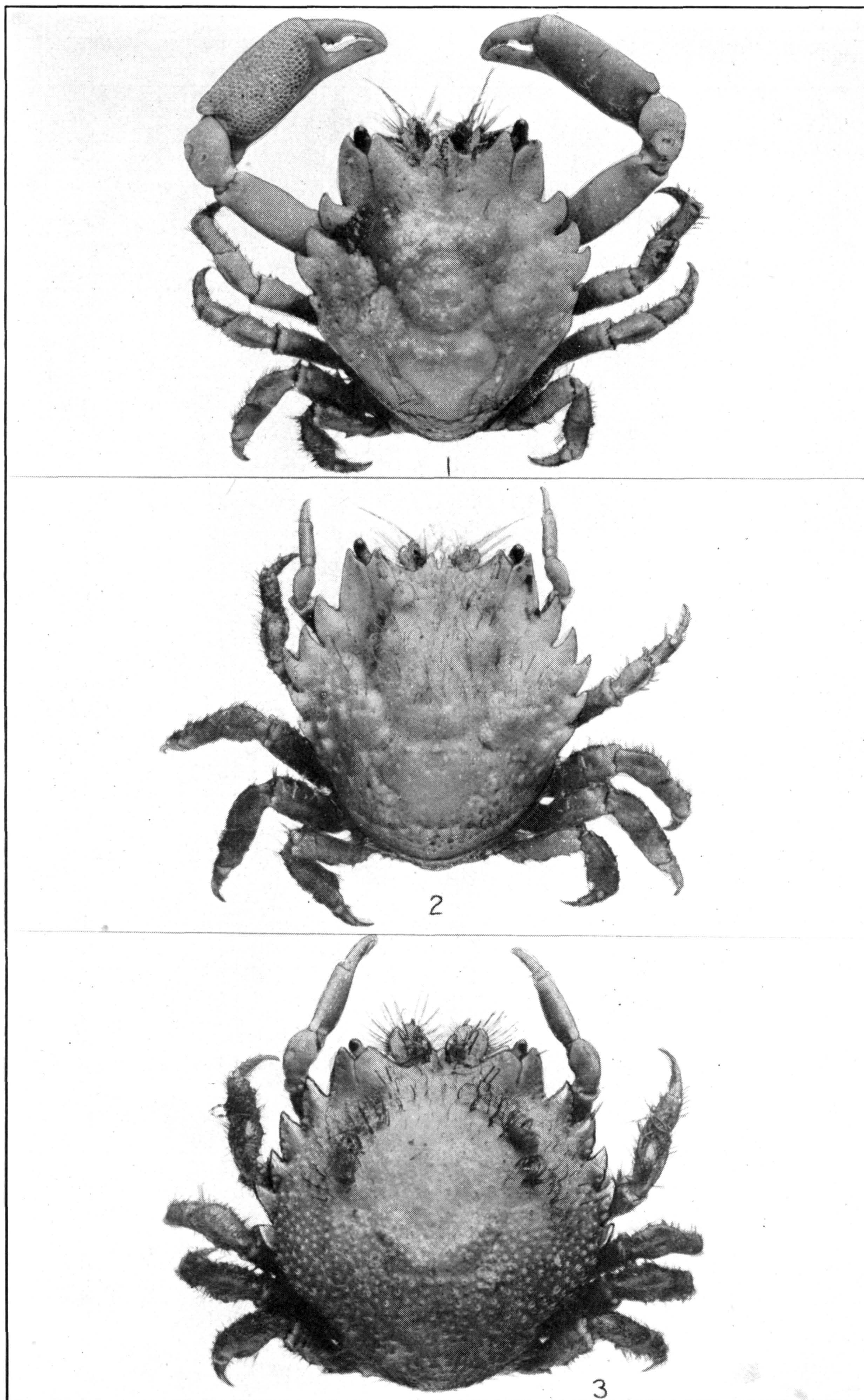
PICROCEROIDES TUBULARIS. (PAGE 354)

FOR EXPLANATION OF PLATE SEE PAGE 576

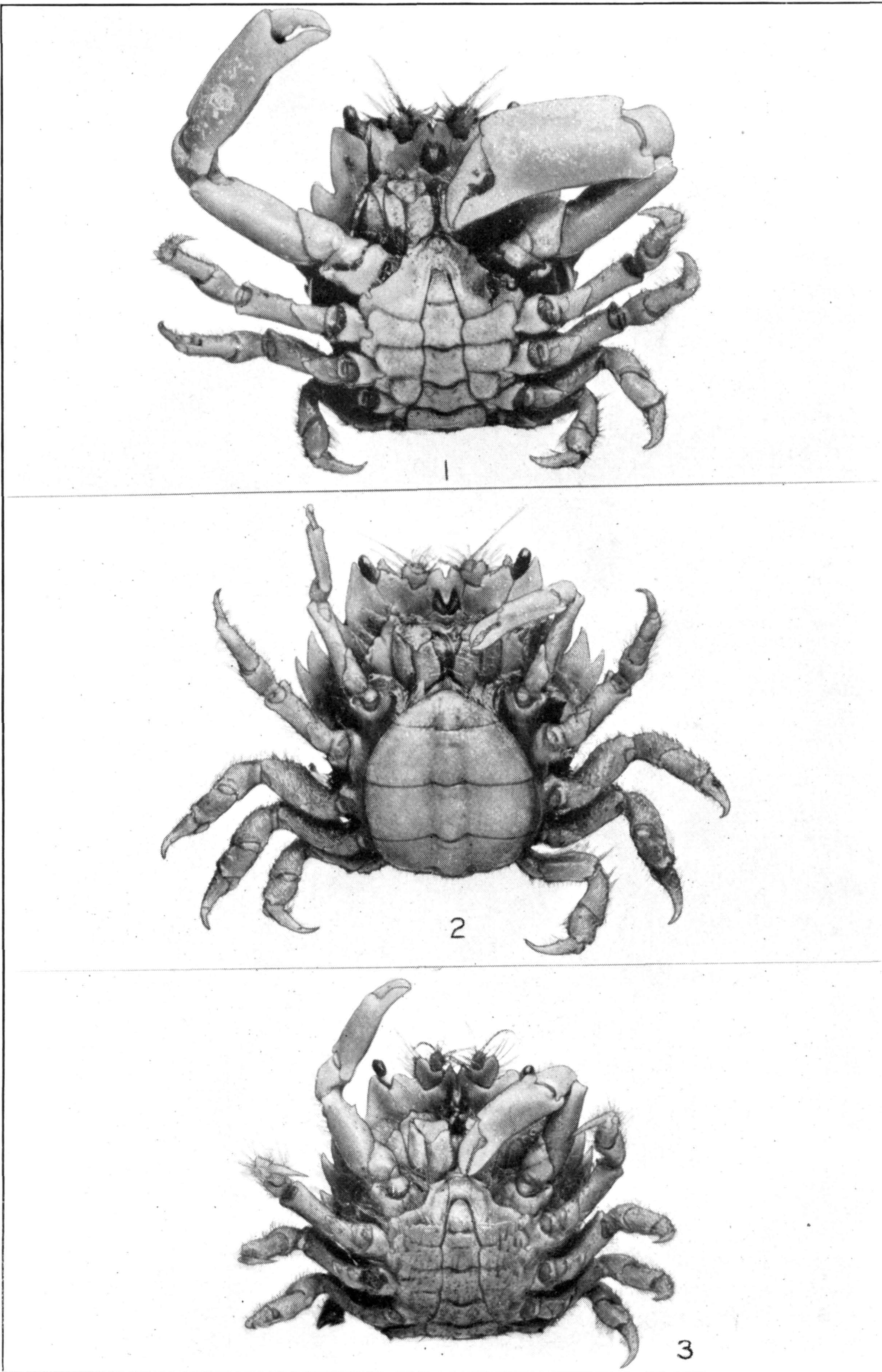


PITHO ACULEATA. (PAGE 357)

FOR EXPLANATION OF PLATE SEE PAGE 576

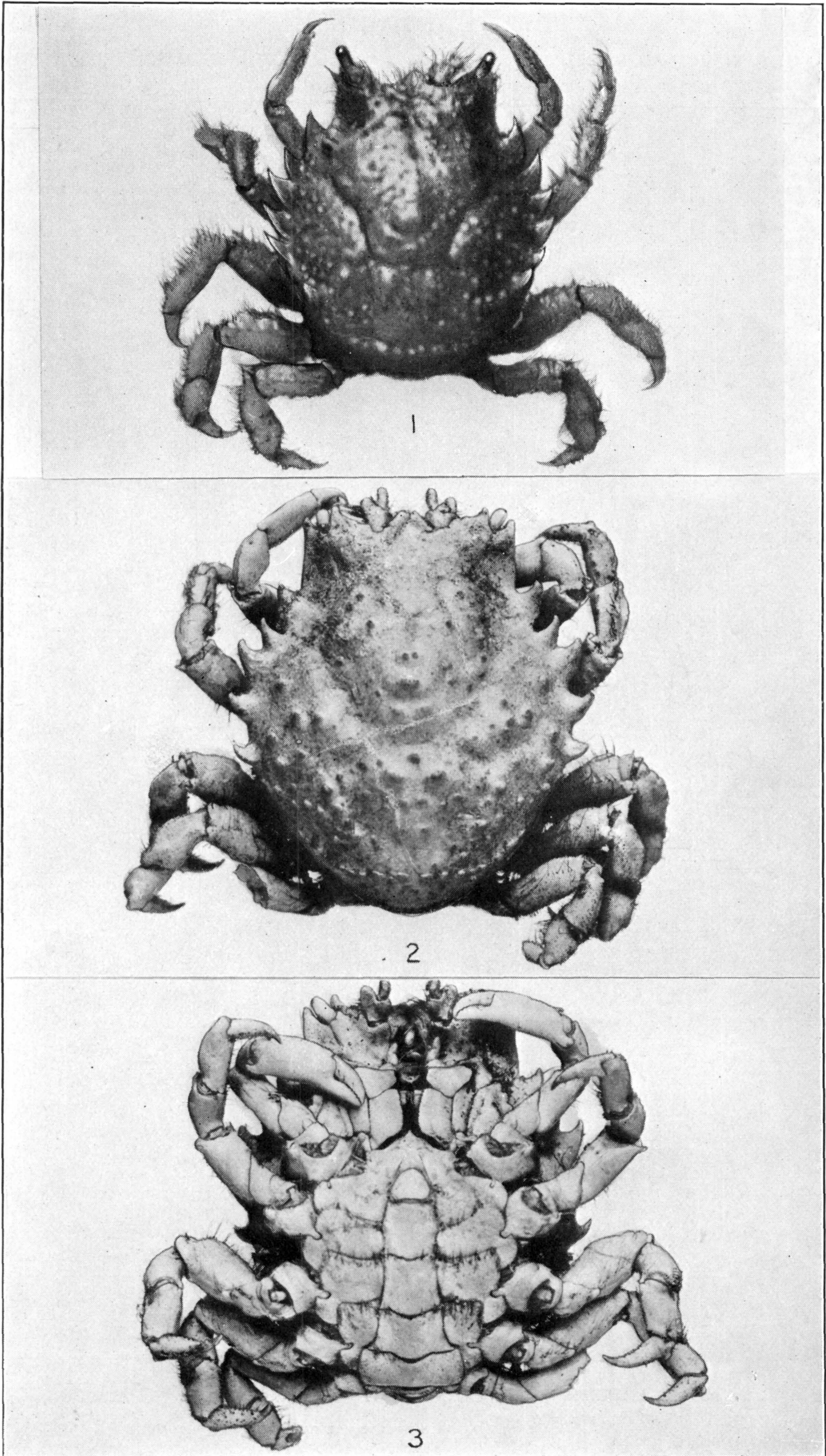


1, 2. PITHO LHERMINIERI. (PAGE 362.) 3. P. MIRABILIS. (PAGE 366)

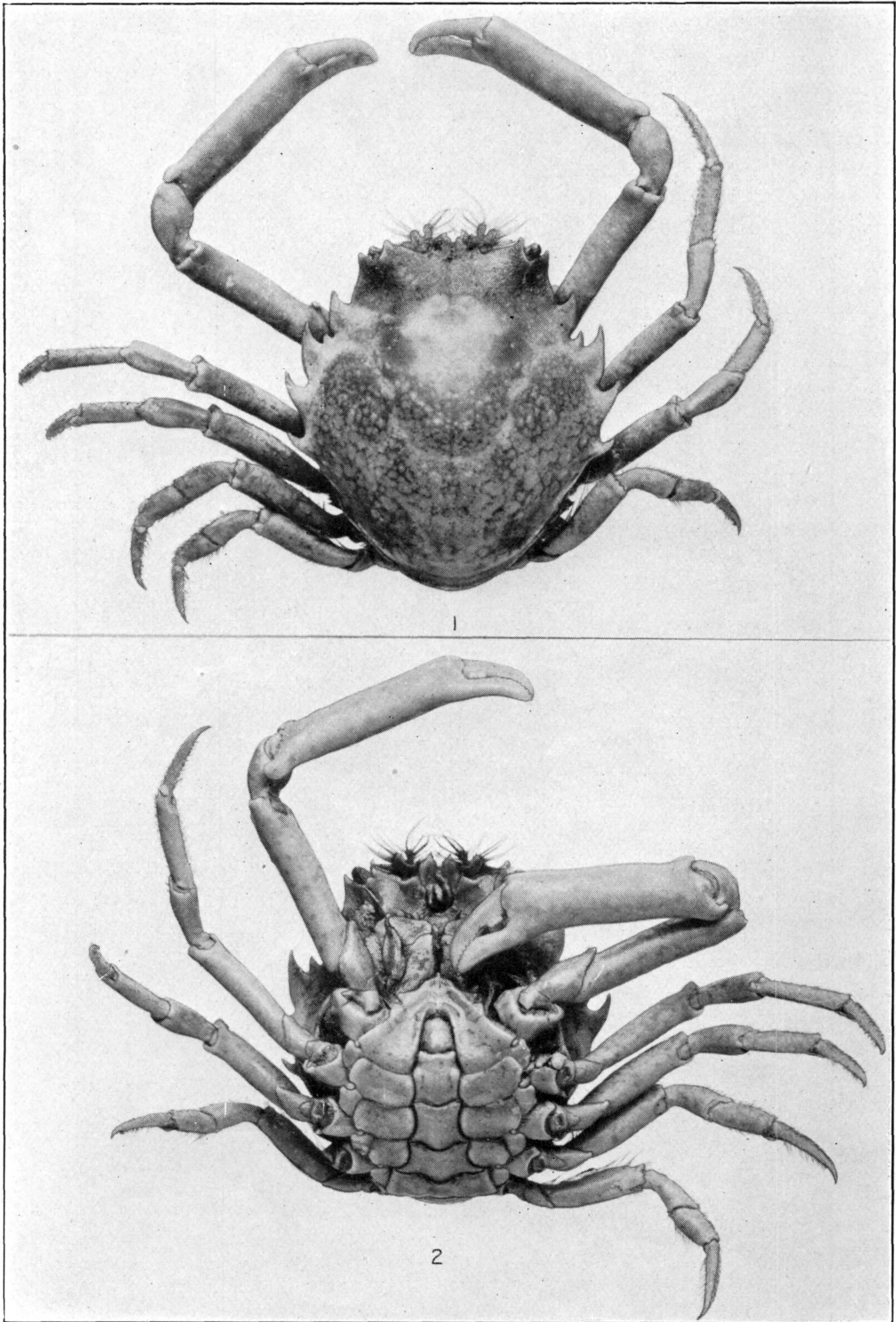


1, 2, *PITHO LHERMINIERI*. (PAGE 362.) 3. *P. MIRABILIS*. (PAGE 366)

FOR EXPLANATION OF PLATE SEE PAGE 577

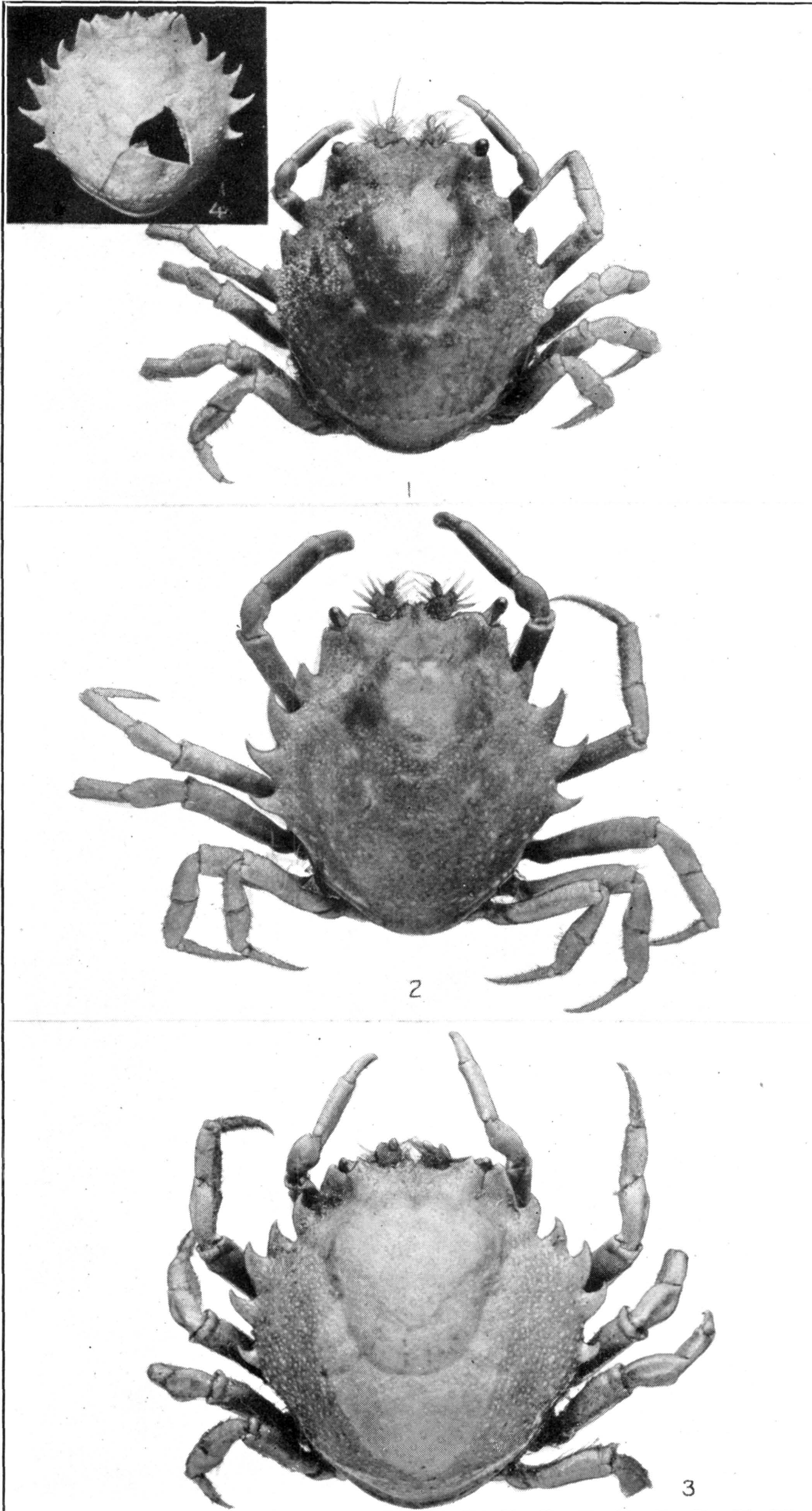


1. *PITHO SEXDENTATA*. (PAGE 367.) 2, 3. *P. PICTETI*. (PAGE 359)



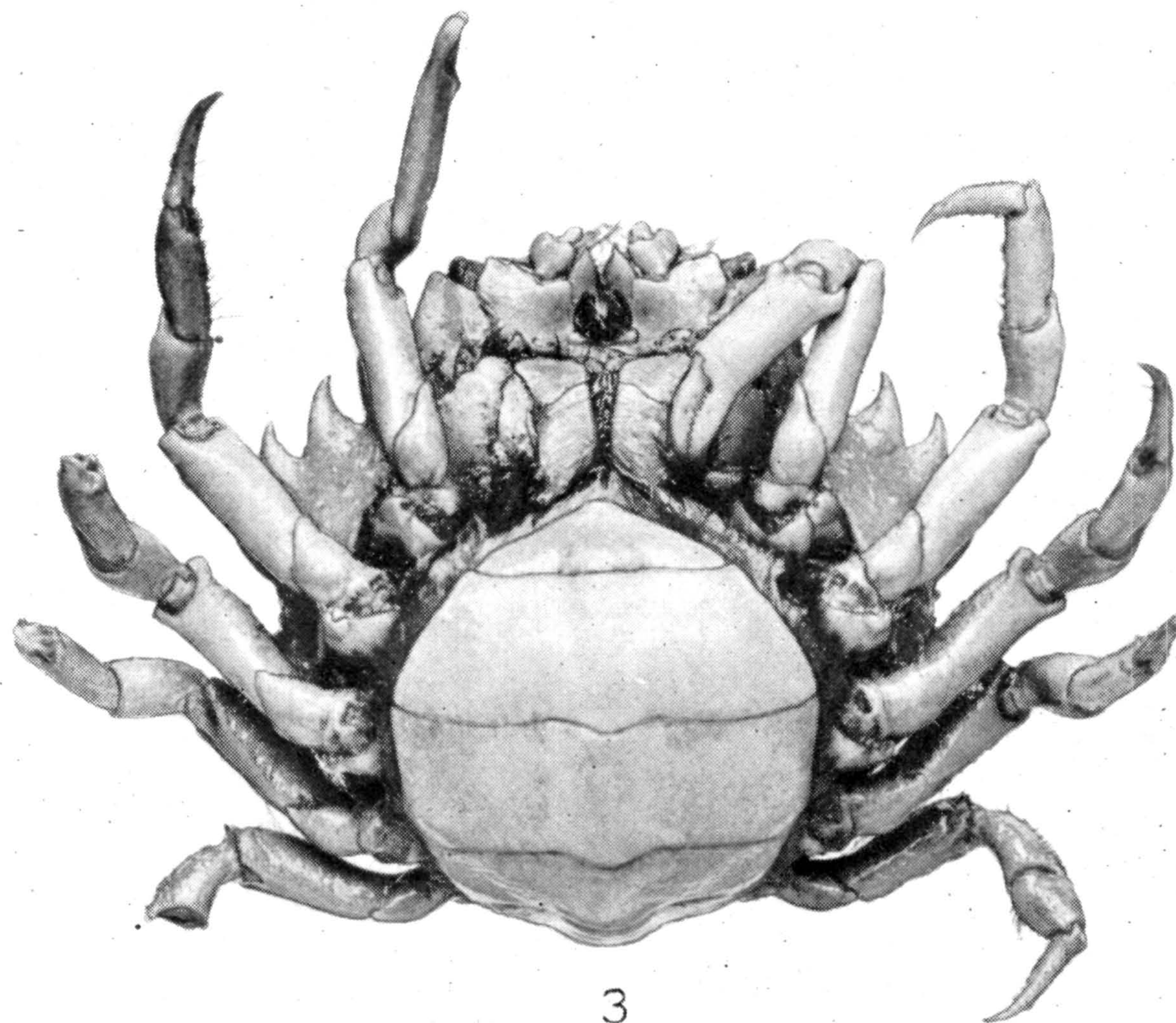
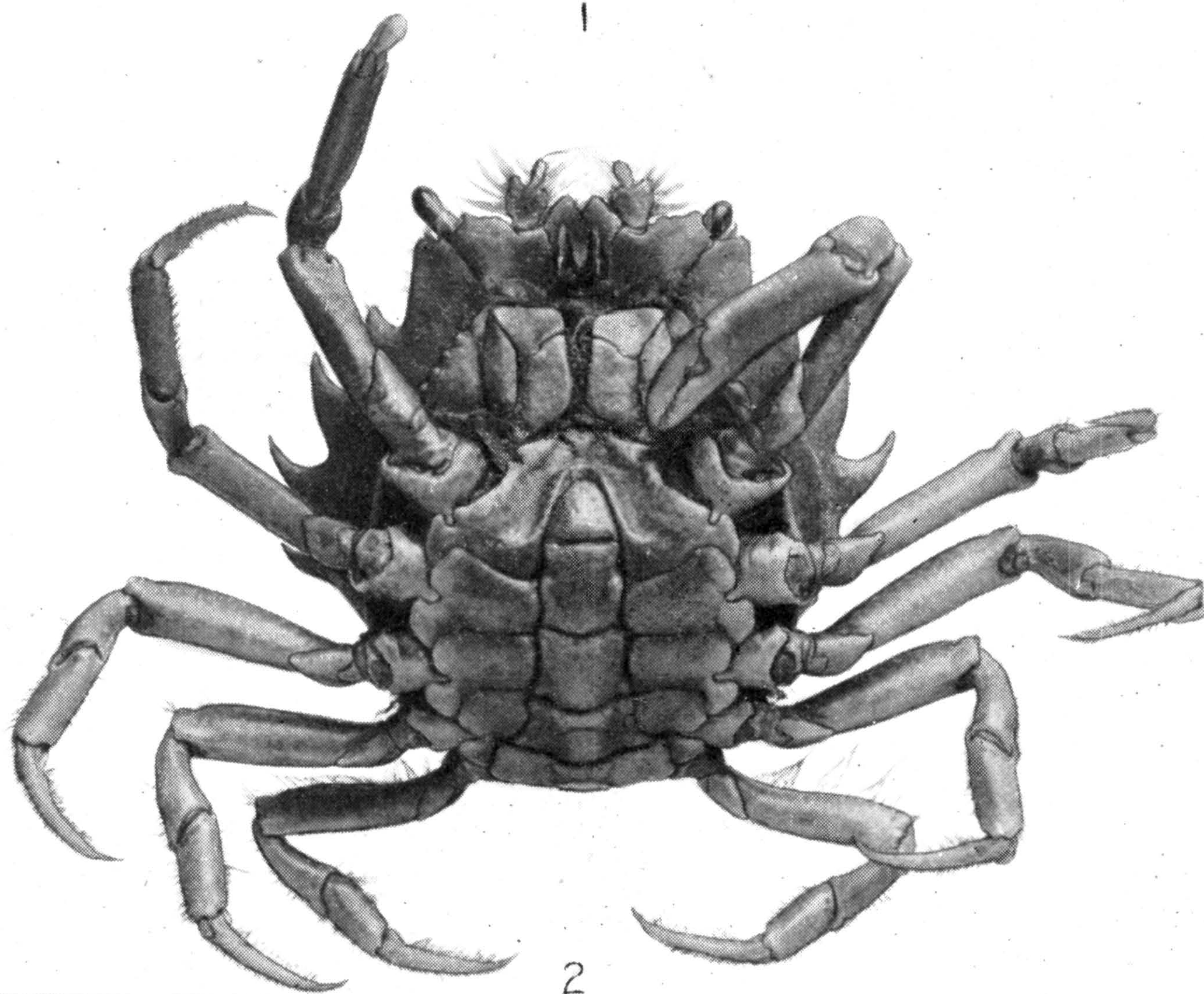
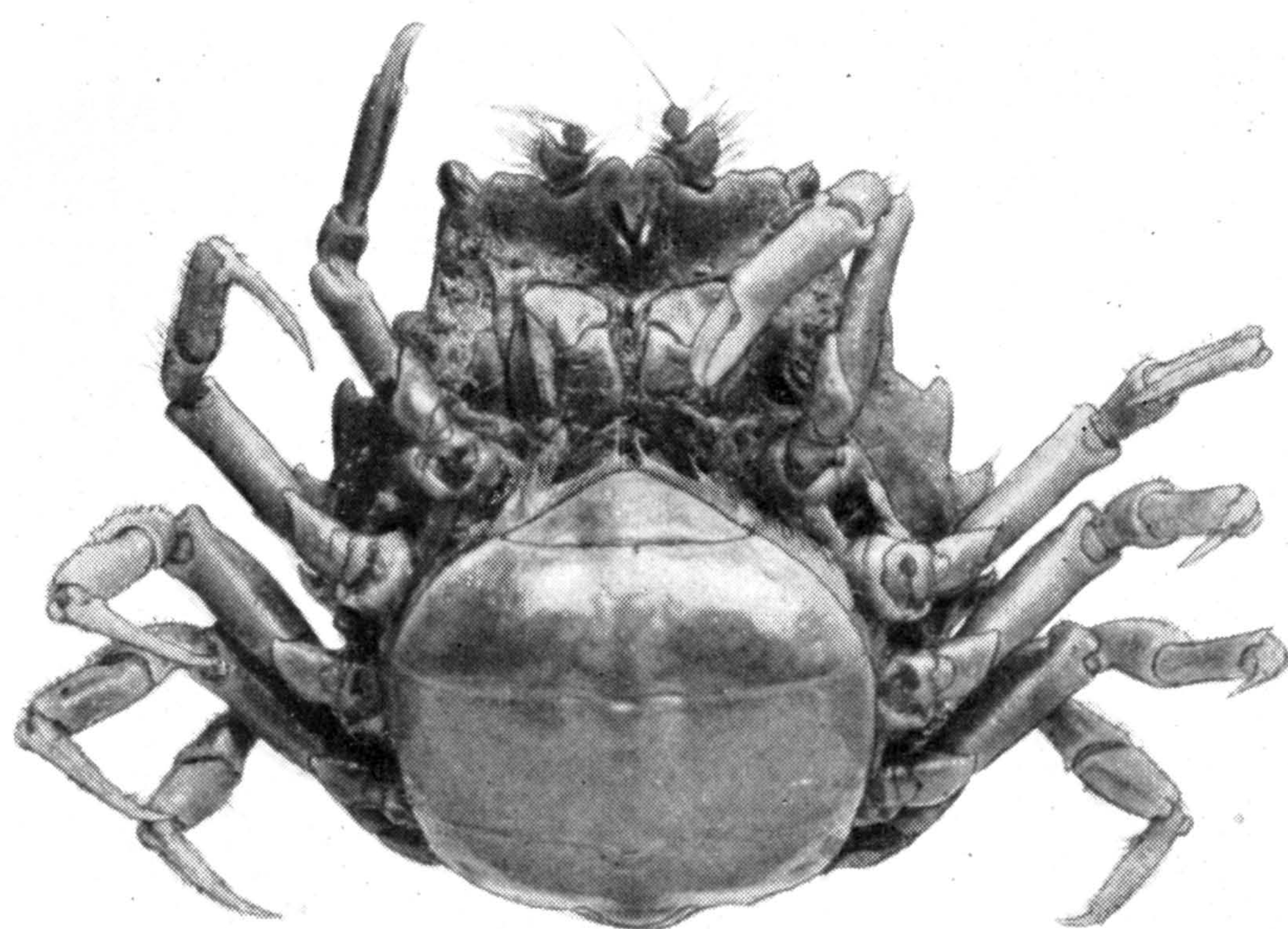
PITHO ANISODON. (PAGE 368)

FOR EXPLANATION OF PLATE SEE PAGE 577

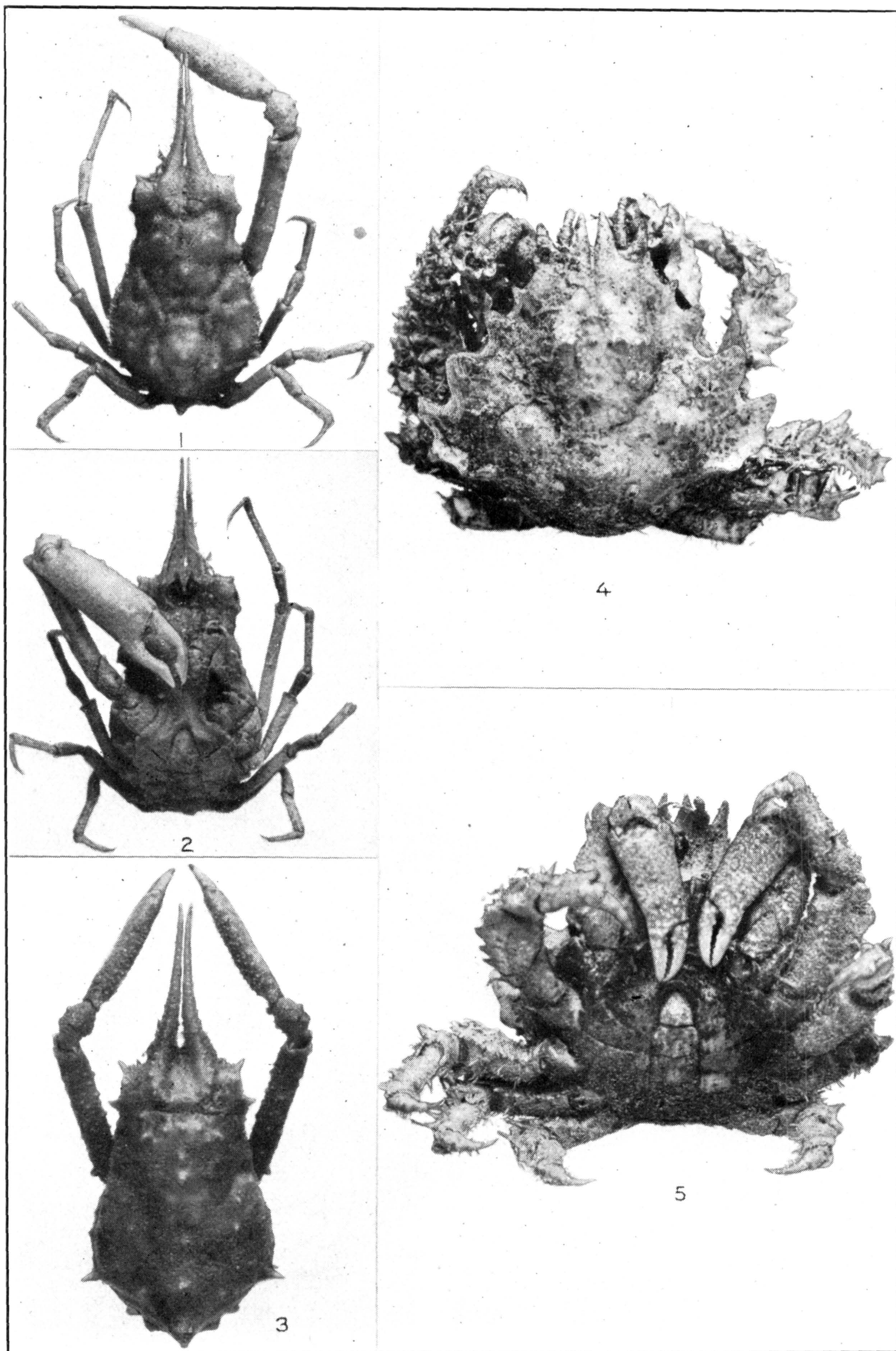


1. *PITHO DISPAR*. (PAGE 374.) 2. *P. QUADRIDENTATA*. (PAGE 369.) 3, 4. *P. LAEVIGATA*. (PAGE 372)

FOR EXPLANATION OF PLATE SEE PAGE 577

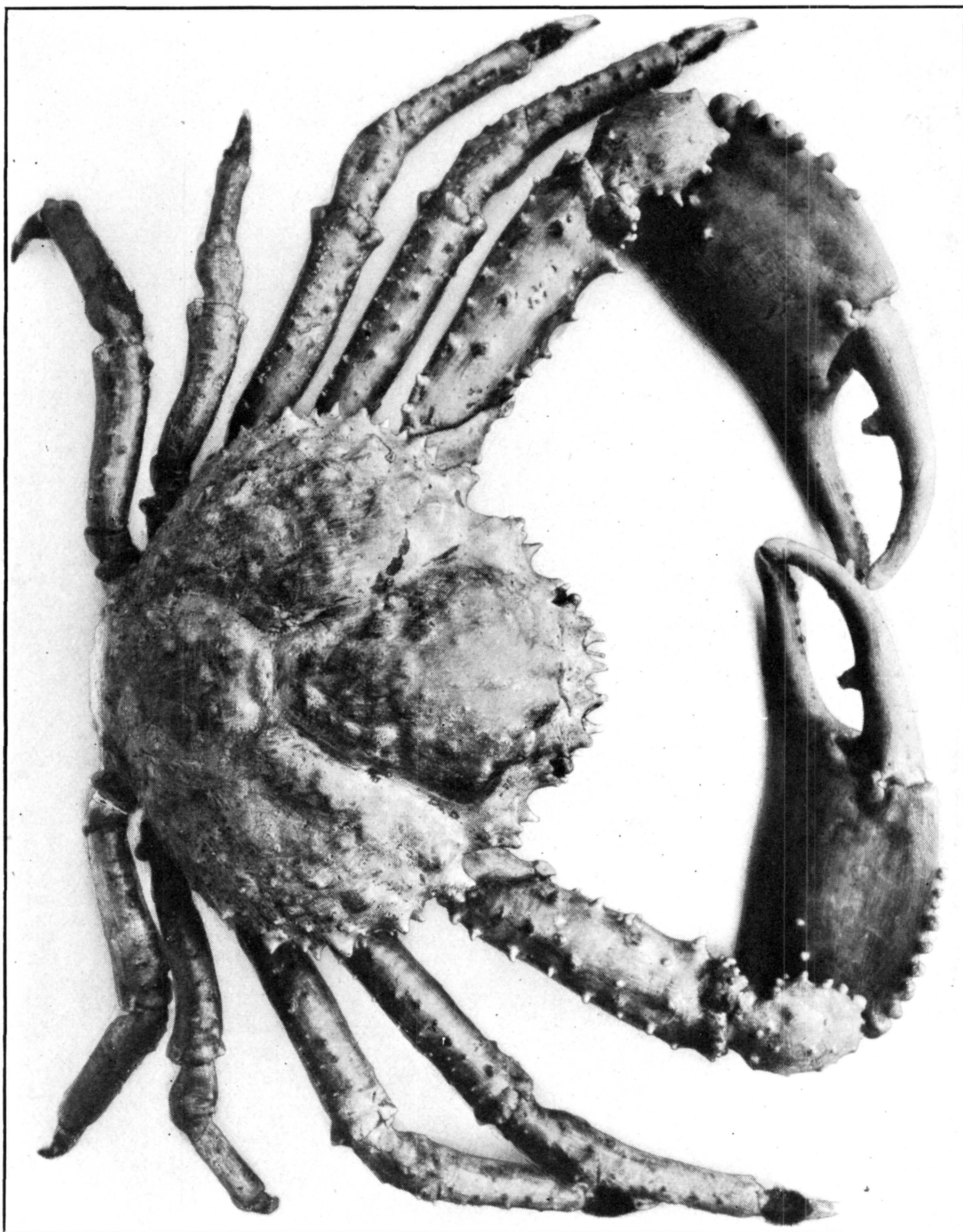


1. PITHO DISPAR. (PAGE 374.) 2. P. QUADRIDENTATA. (PAGE 369.)
3. P. LAEVIGATA. (PAGE 372)



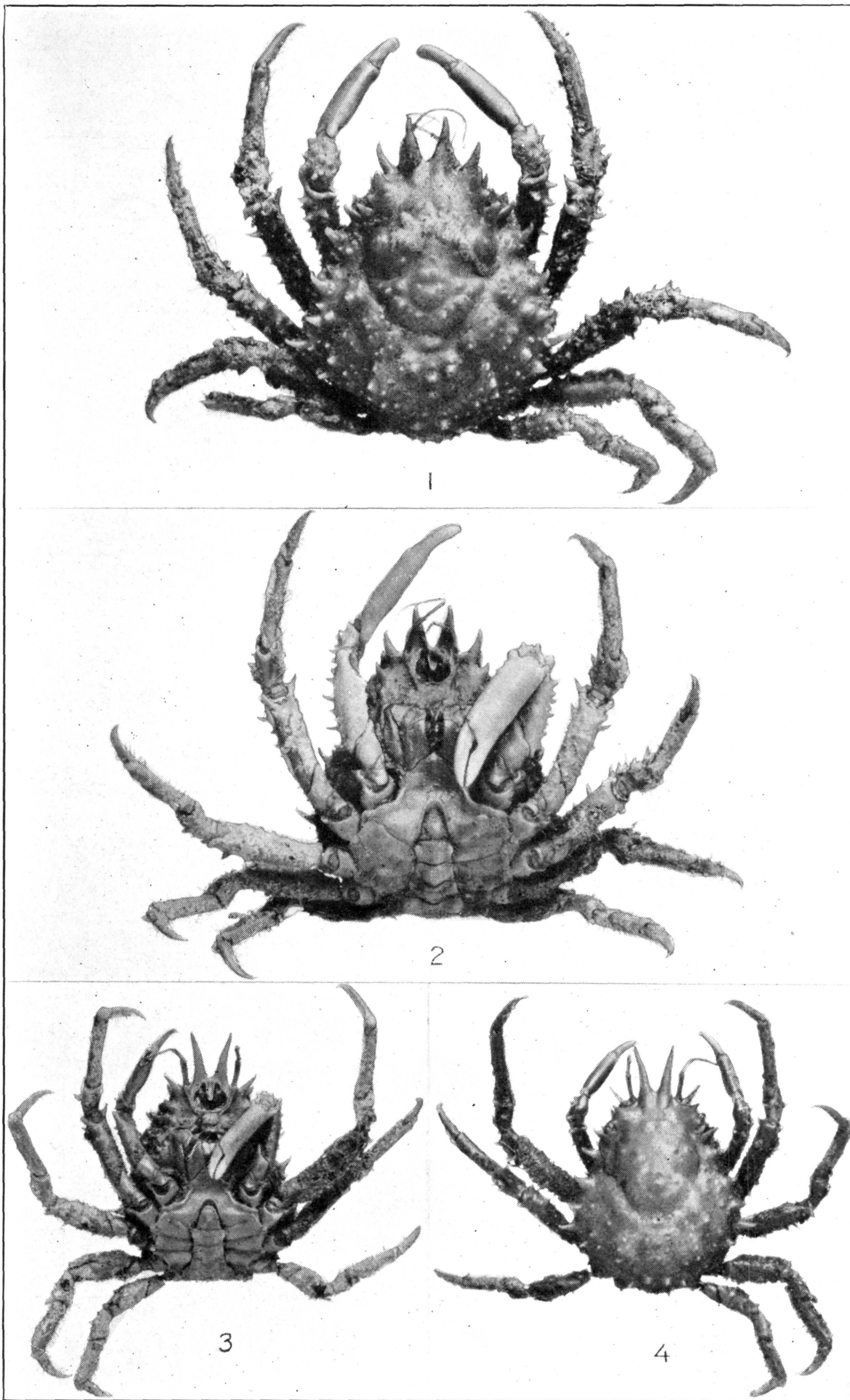
1-3. *LEPTOPISA SETIROSTRIS*. (PAGE 375.) 4, 5. *ANAPTYCHUS CORNUTUS*. (PAGE 378)

FOR EXPLANATION OF PLATE SEE PAGE 577



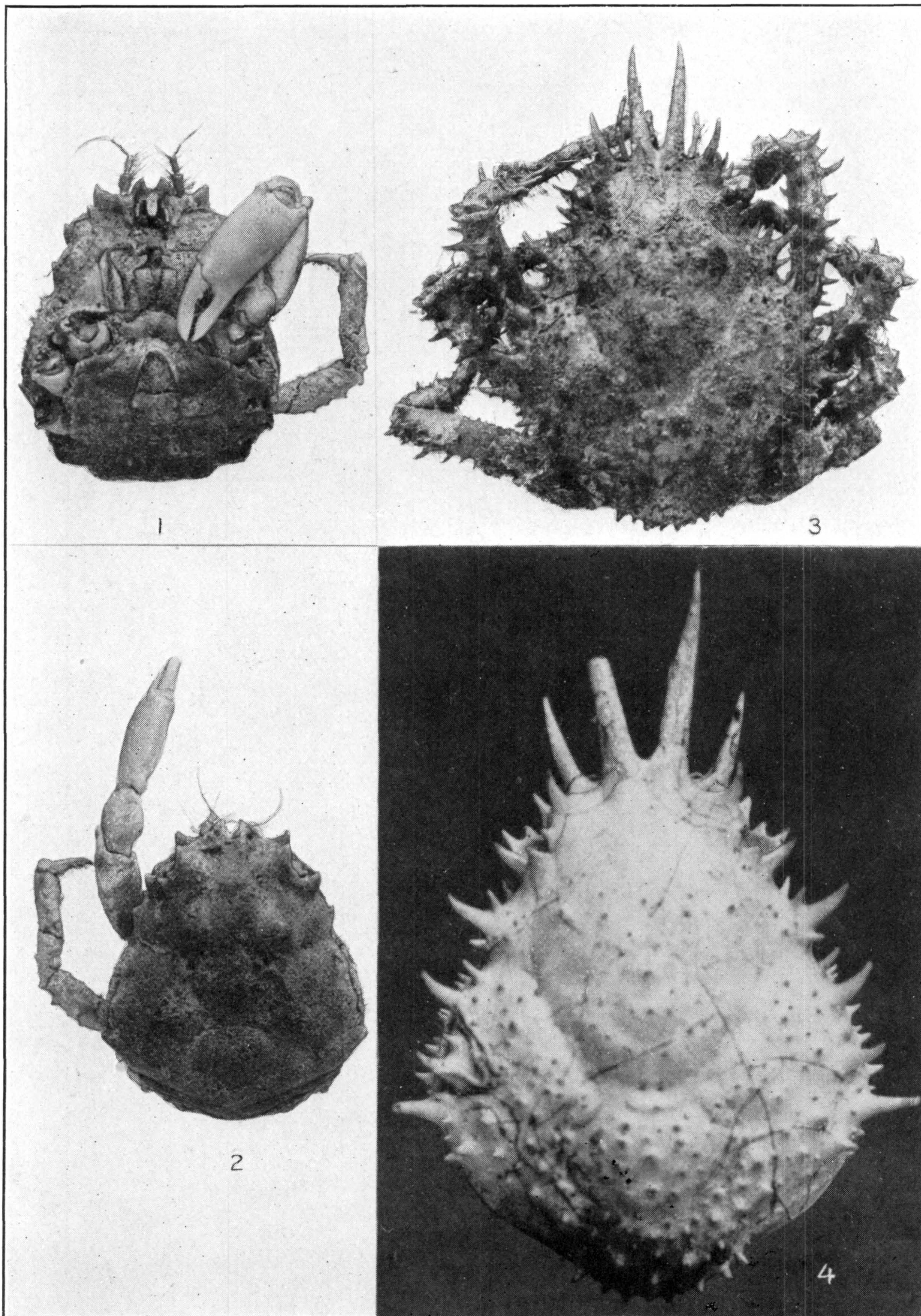
MITHRAX SPINOSISSIMUS. (PAGE 383)

FOR EXPLANATION OF PLATE SEE PAGE 577



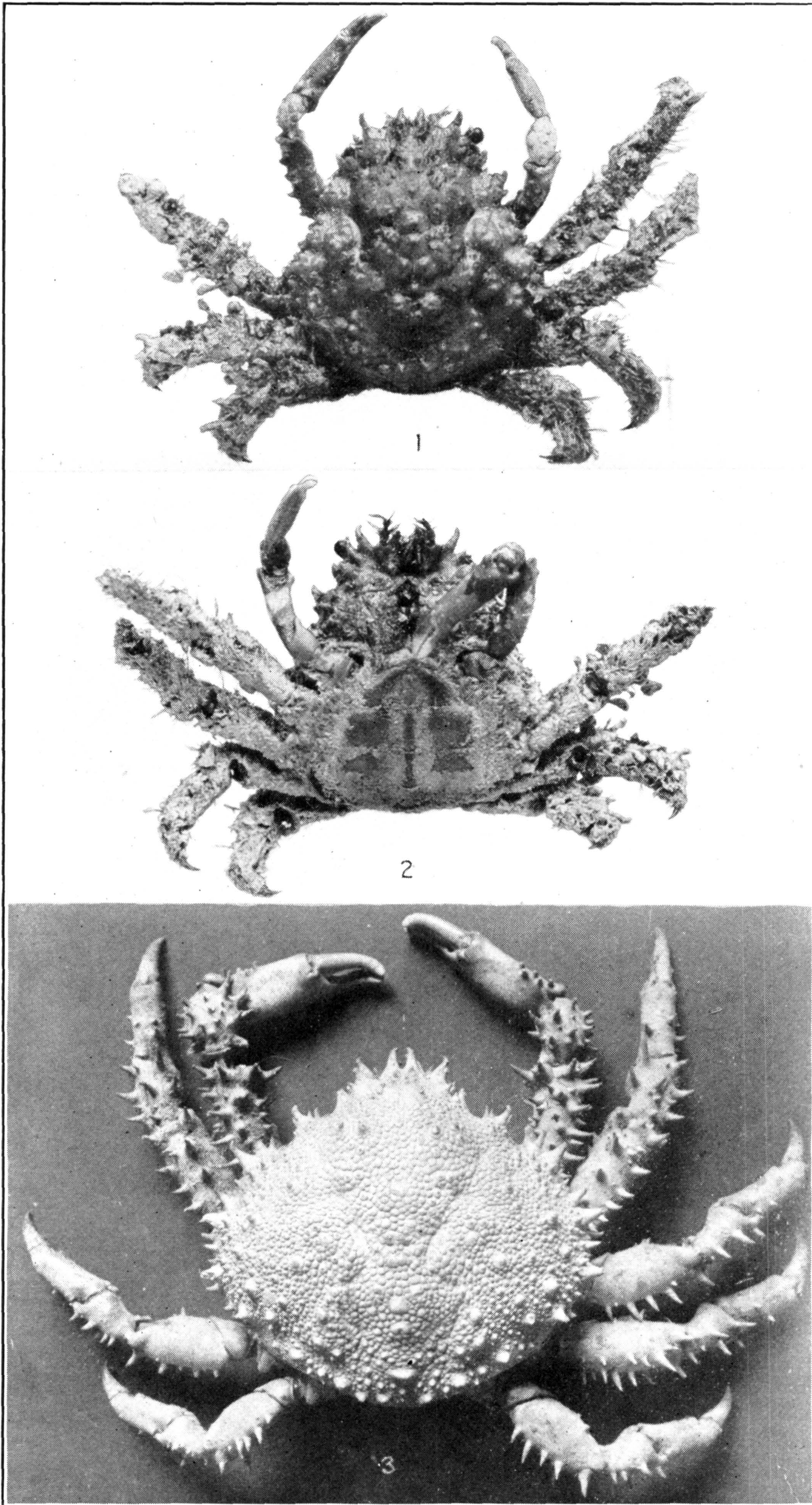
1, 2. MITHRAX ACUTICORNIS. (PAGE 388.) 3, 4. M. SPINIPES. (PAGE 391)

FOR EXPLANATION OF PLATE SEE PAGE 577



1, 2. MITHRAX BAHAMENSIS. (PAGE 393.) 3, 4. M. CORNUTUS. (PAGE 386)

FOR EXPLANATION OF PLATE SEE PAGES 577 AND 578



1, 2. MITHRAX HOLDERI. (PAGE 392.) 3. M. PILOSUS.
(PAGE 394)

FOR EXPLANATION OF PLATE SEE PAGE 578