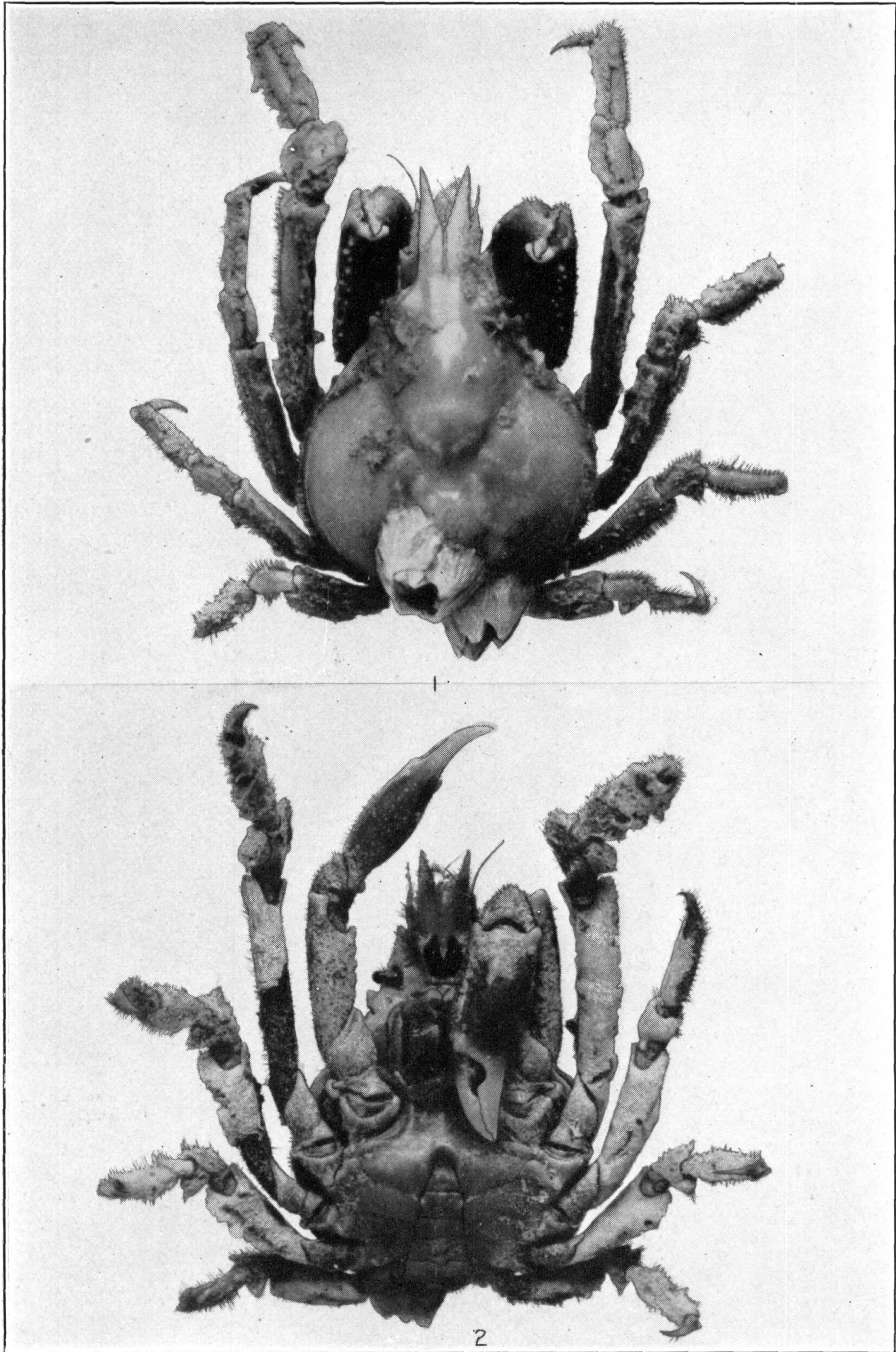


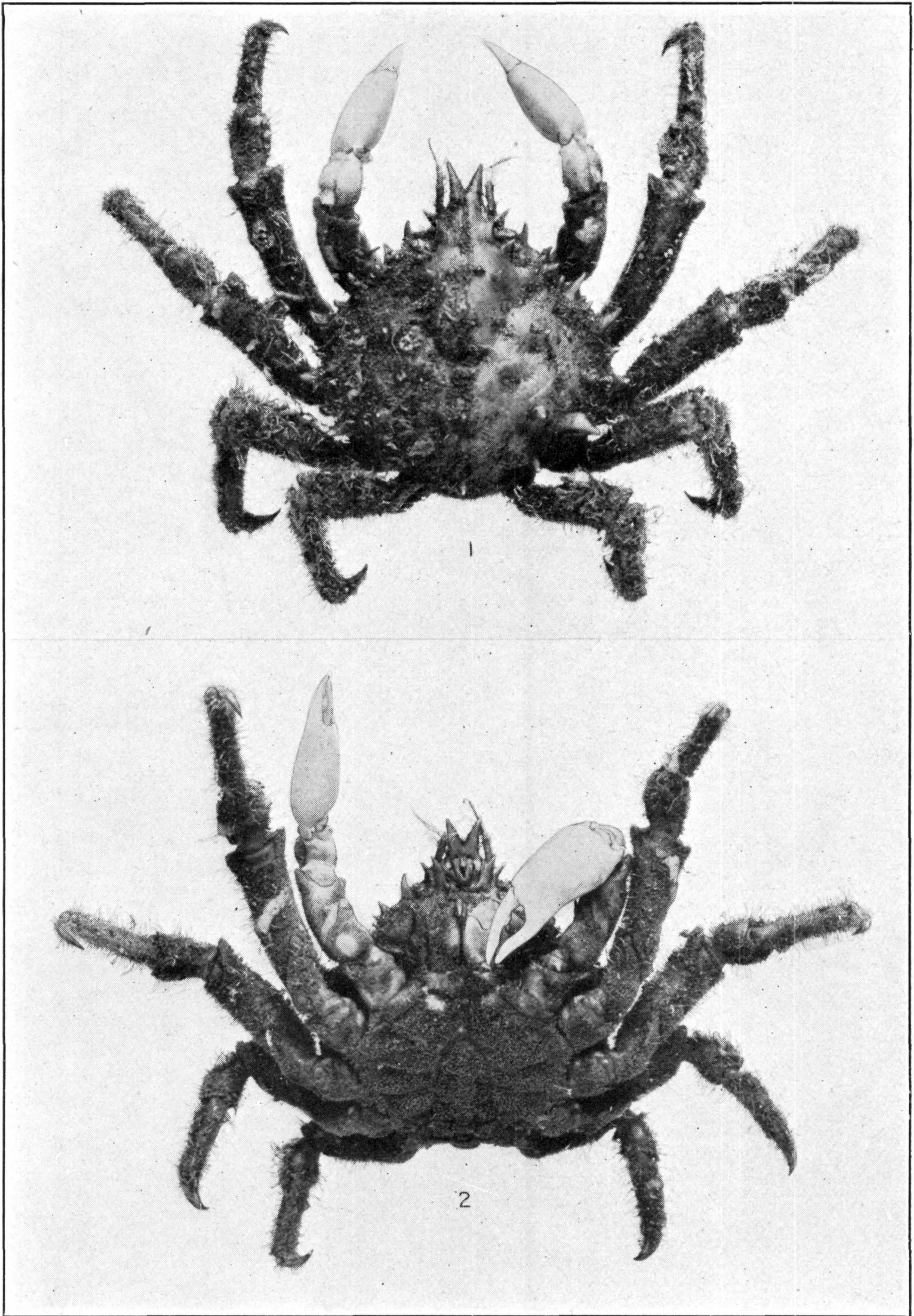
1. *PELIA PACIFICA*. (PAGE 283.) 2, 3. *P. TUMIDA*. (PAGE 281)

FOR EXPLANATION OF PLATE SEE PAGE 574



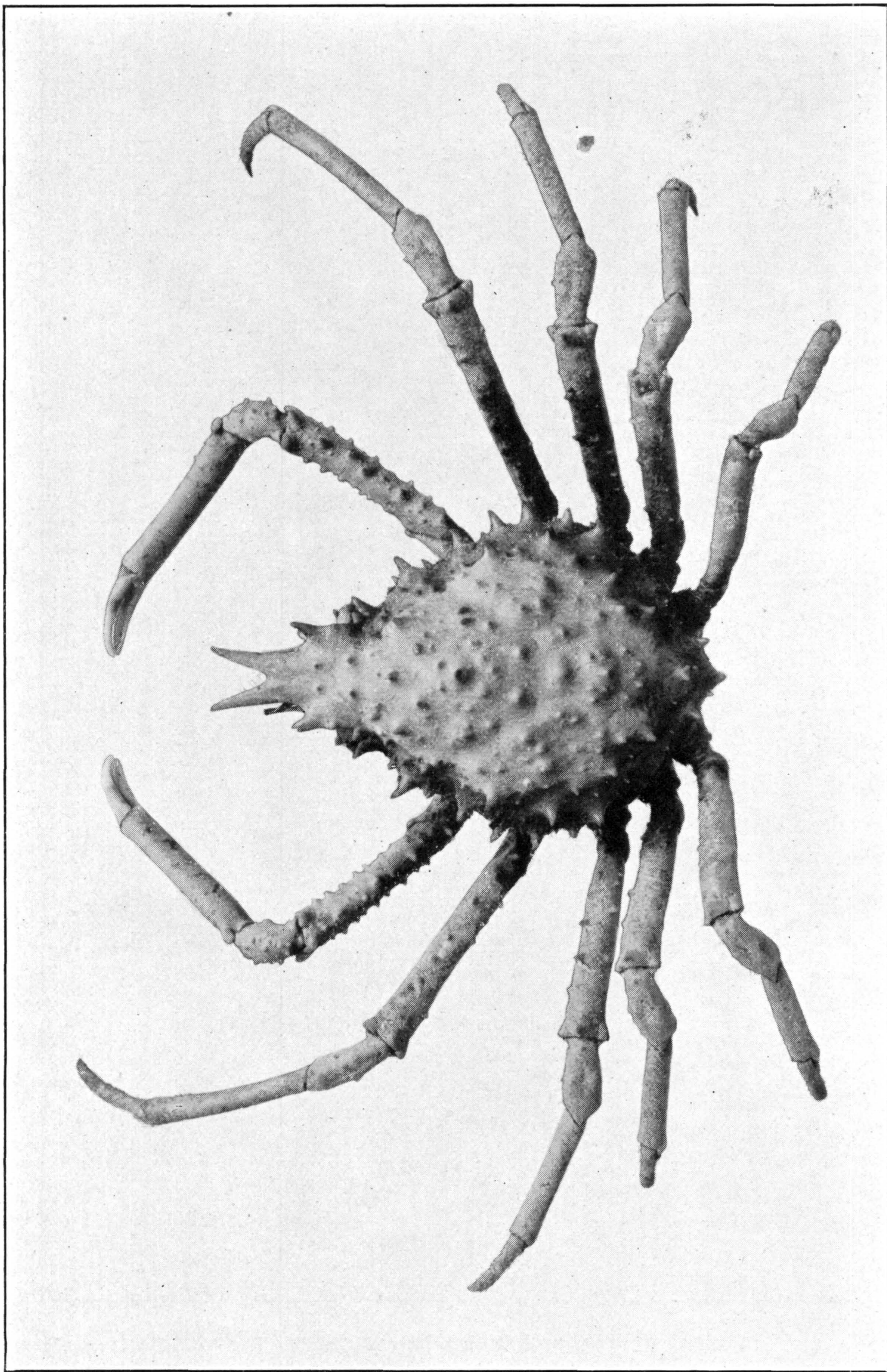
PELIA ROTUNDA. (PAGE 279)

FOR EXPLANATION OF PLATE SEE PAGE 574



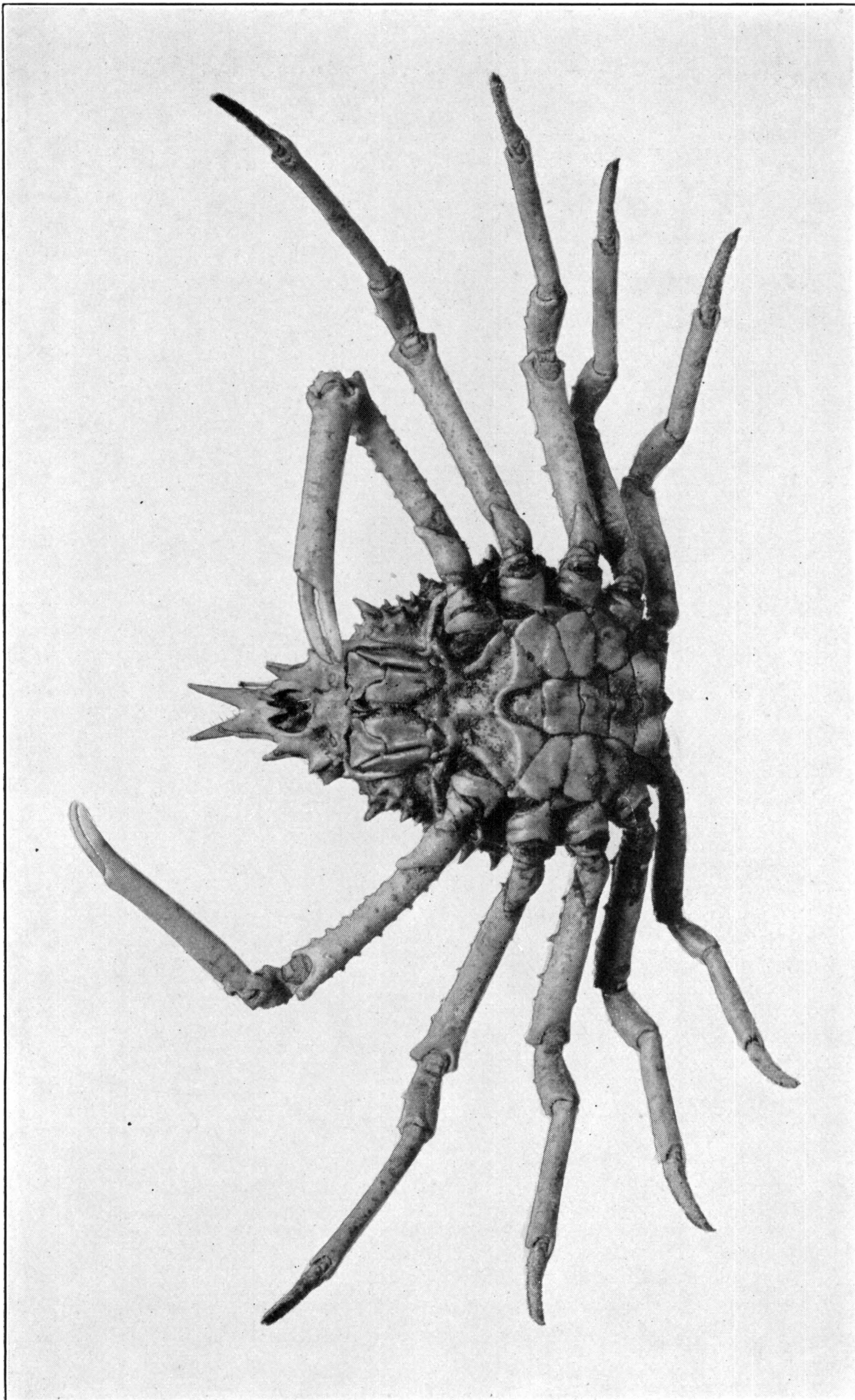
MICROPISA VIOLACEA. (PAGE 303)

FOR EXPLANATION OF PLATE SEE PAGE 574



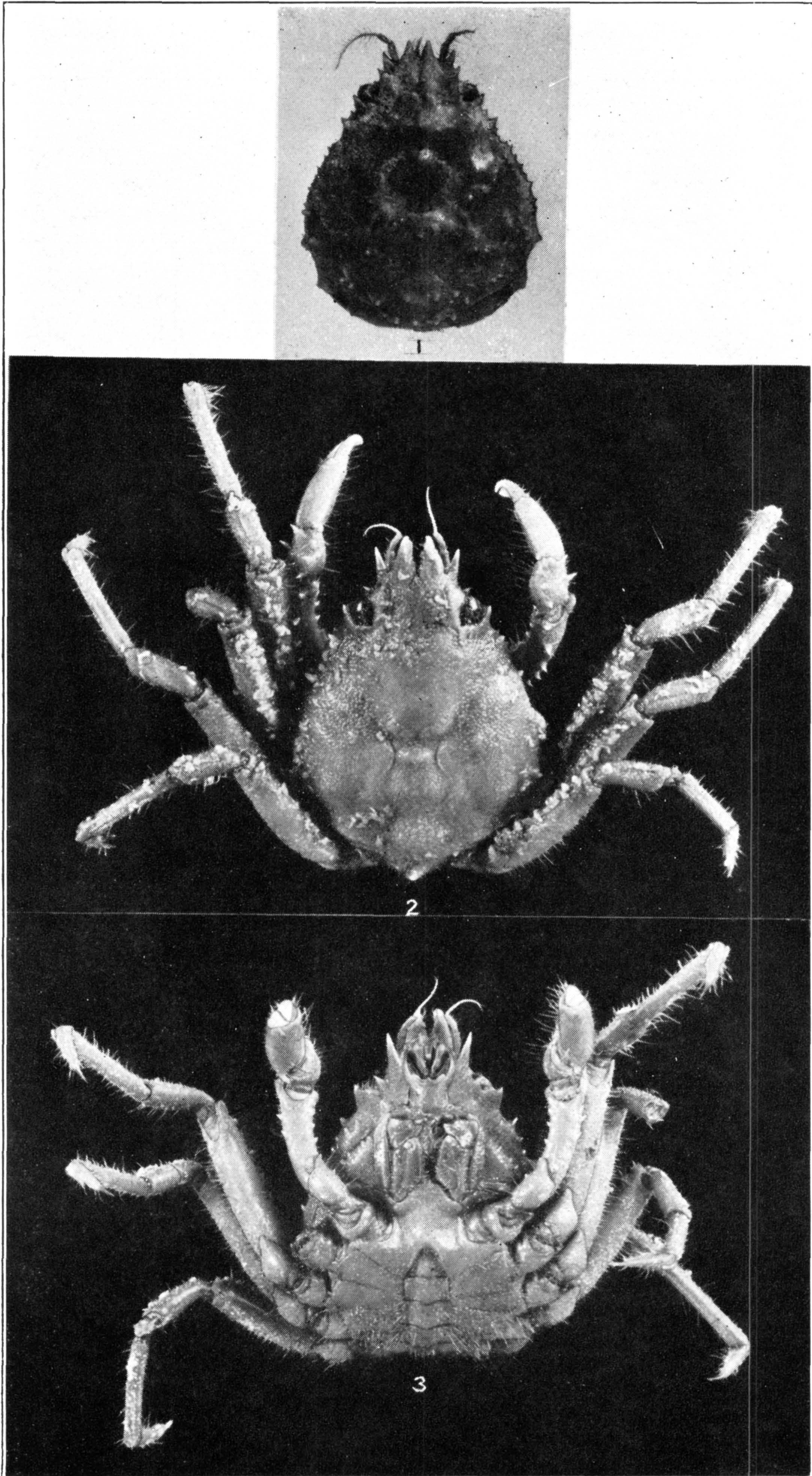
NIBILIA ANTILOCAPRA. (PAGE 290)

FOR EXPLANATION OF PLATE SEE PAGE 574



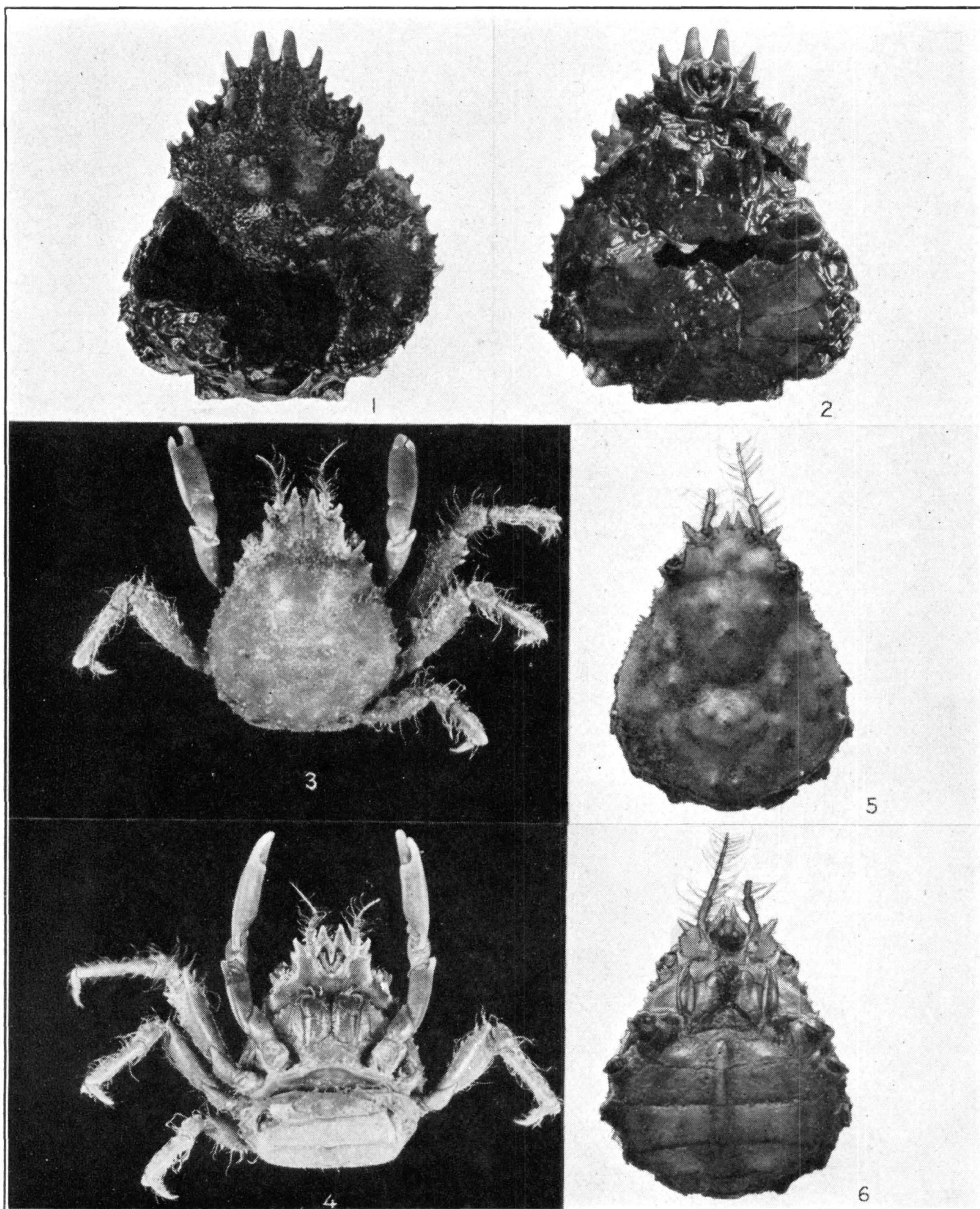
NIBILIA ANTILOCAPRA. (PAGE 290)

FOR EXPLANATION OF PLATE SEE PAGE 574



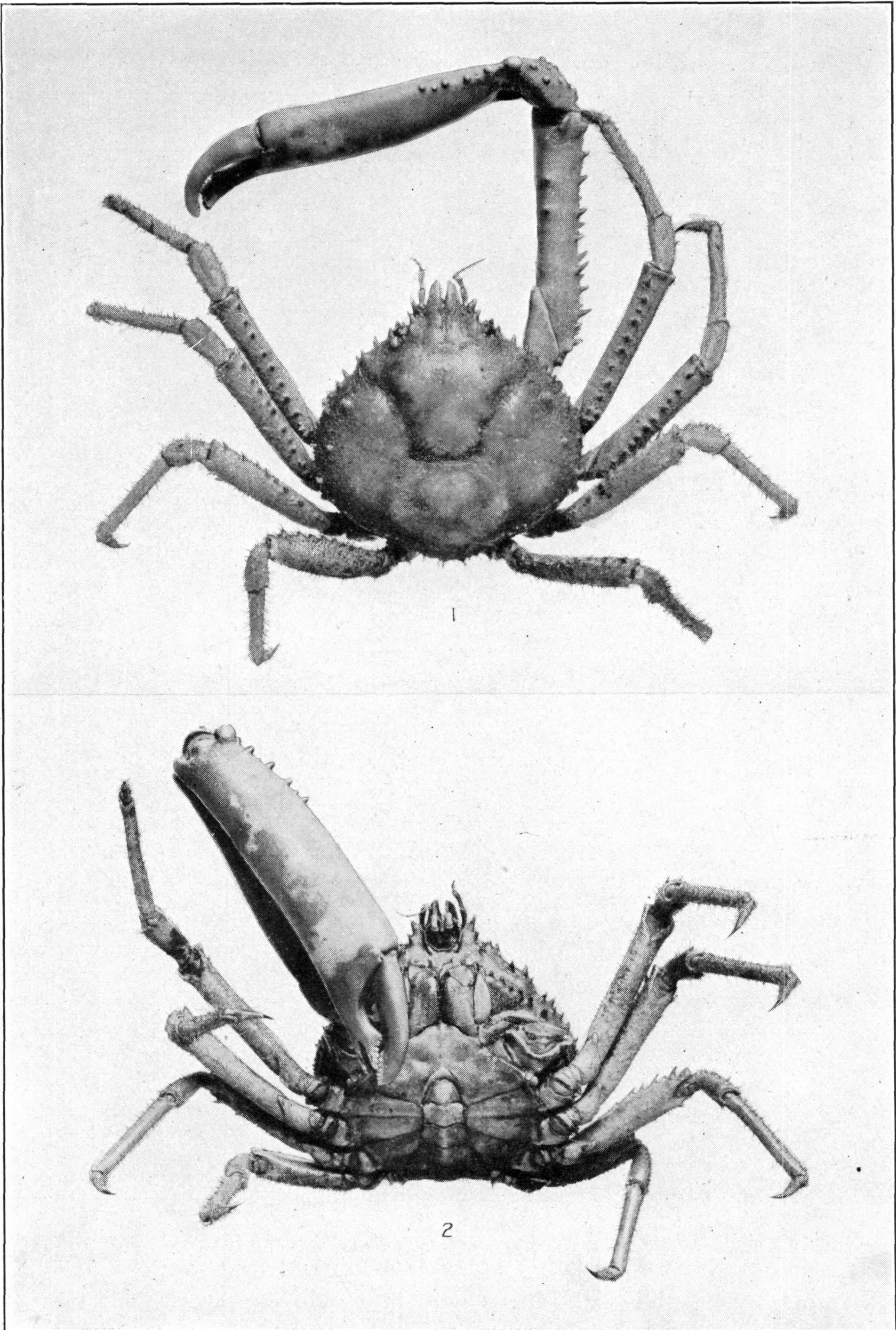
1. *HERBSTIA DEPRESSA*. (PAGE 298.) 2, 3. *H. PYRIFORMIS*.
(PAGE 301)

FOR EXPLANATION OF PLATE SEE PAGE 574



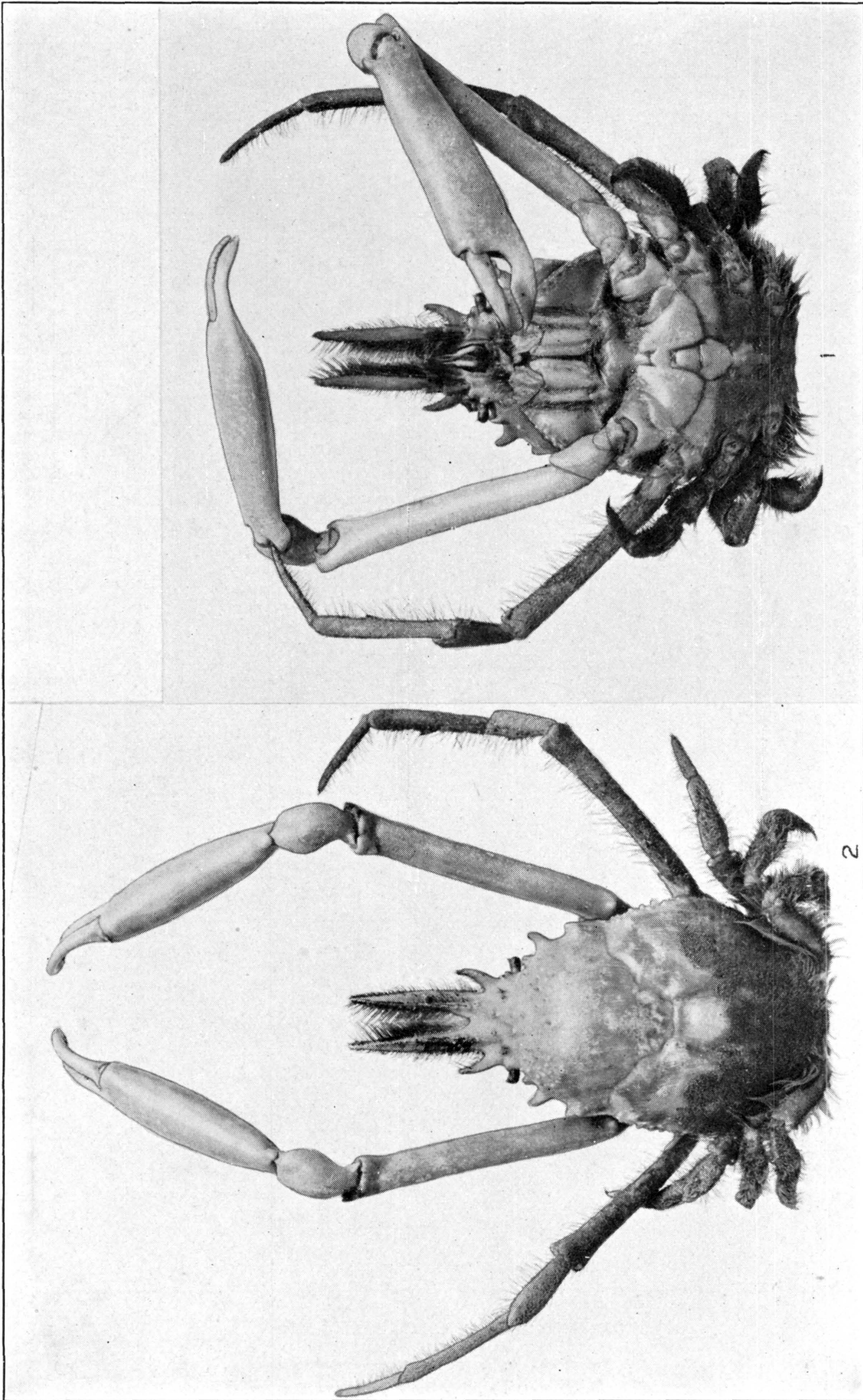
1, 2. *HERBSTIA CAMPTACANTHA*. (PAGE 294.) 3, 4. *H. EDWARDSII*. (PAGE 300.) 5, 6. *H. TUMIDA*. (PAGE 299)

FOR EXPLANATION OF PLATE SEE PAGES 574 AND 575



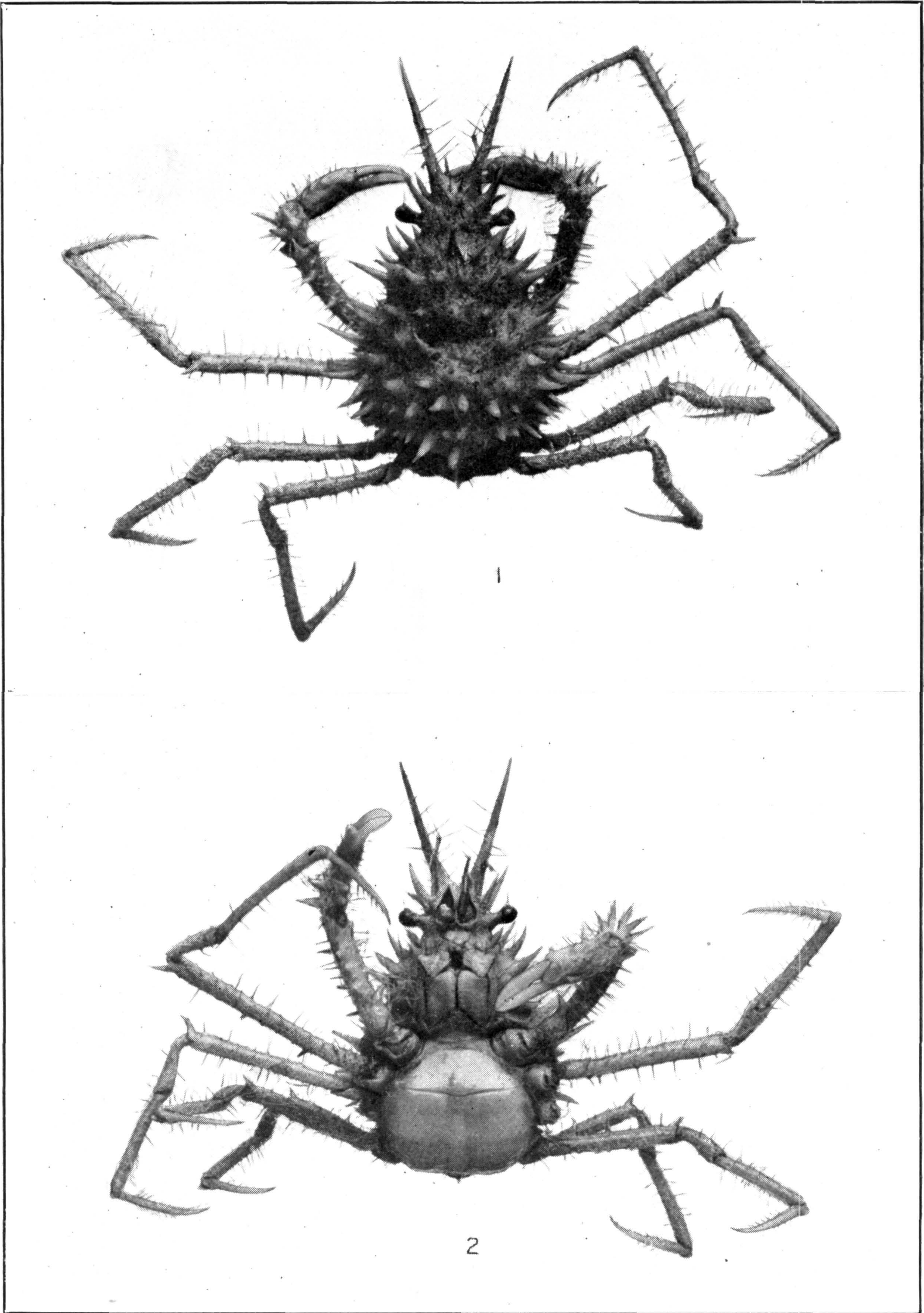
HERBSTIA PARVIFRONS. (PAGE 296)

FOR EXPLANATION OF PLATE SEE PAGE 575



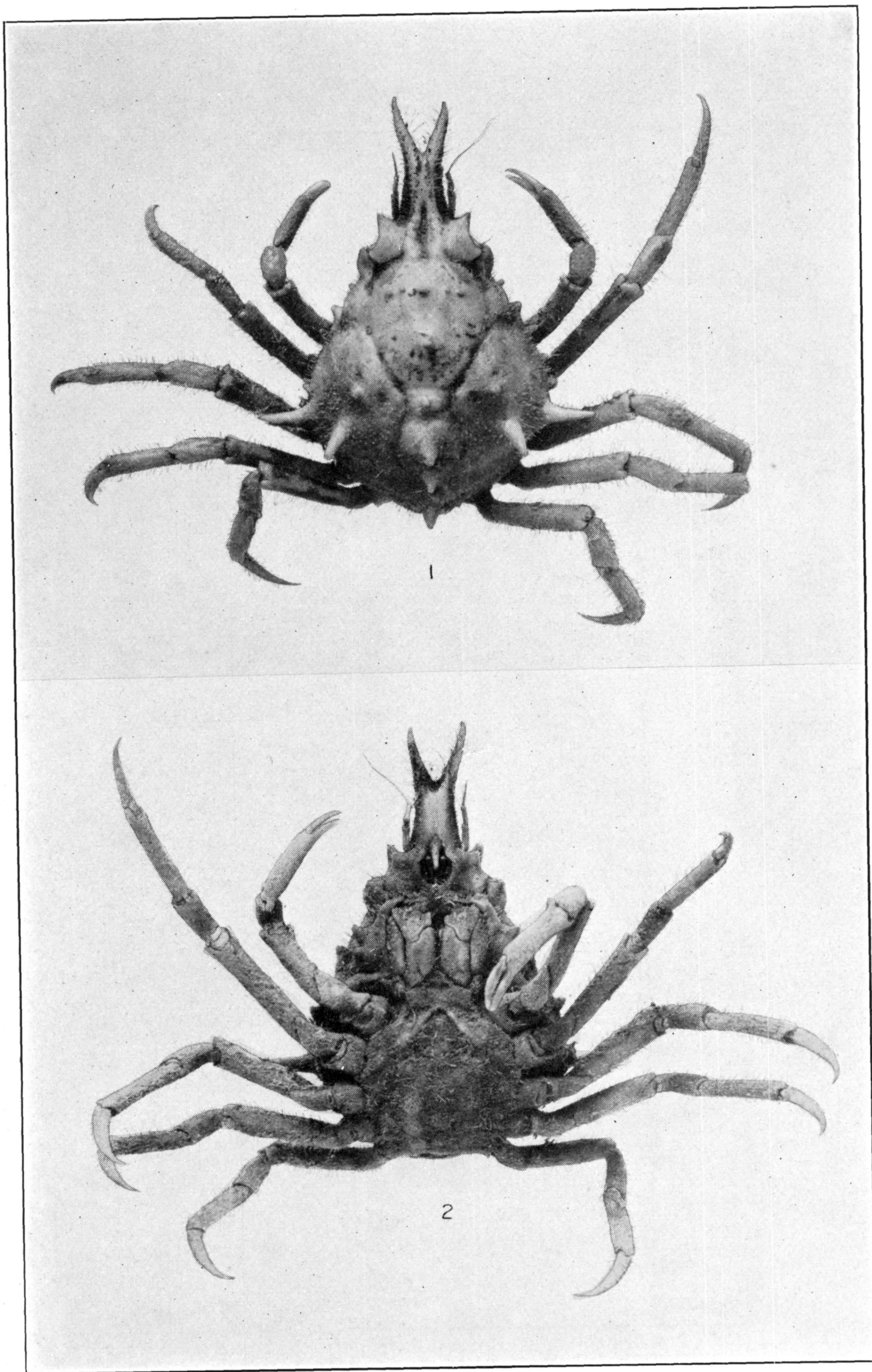
CHORINUS HEROS. (PAGE 305)

FOR EXPLANATION OF PLATE SEE PAGE 575



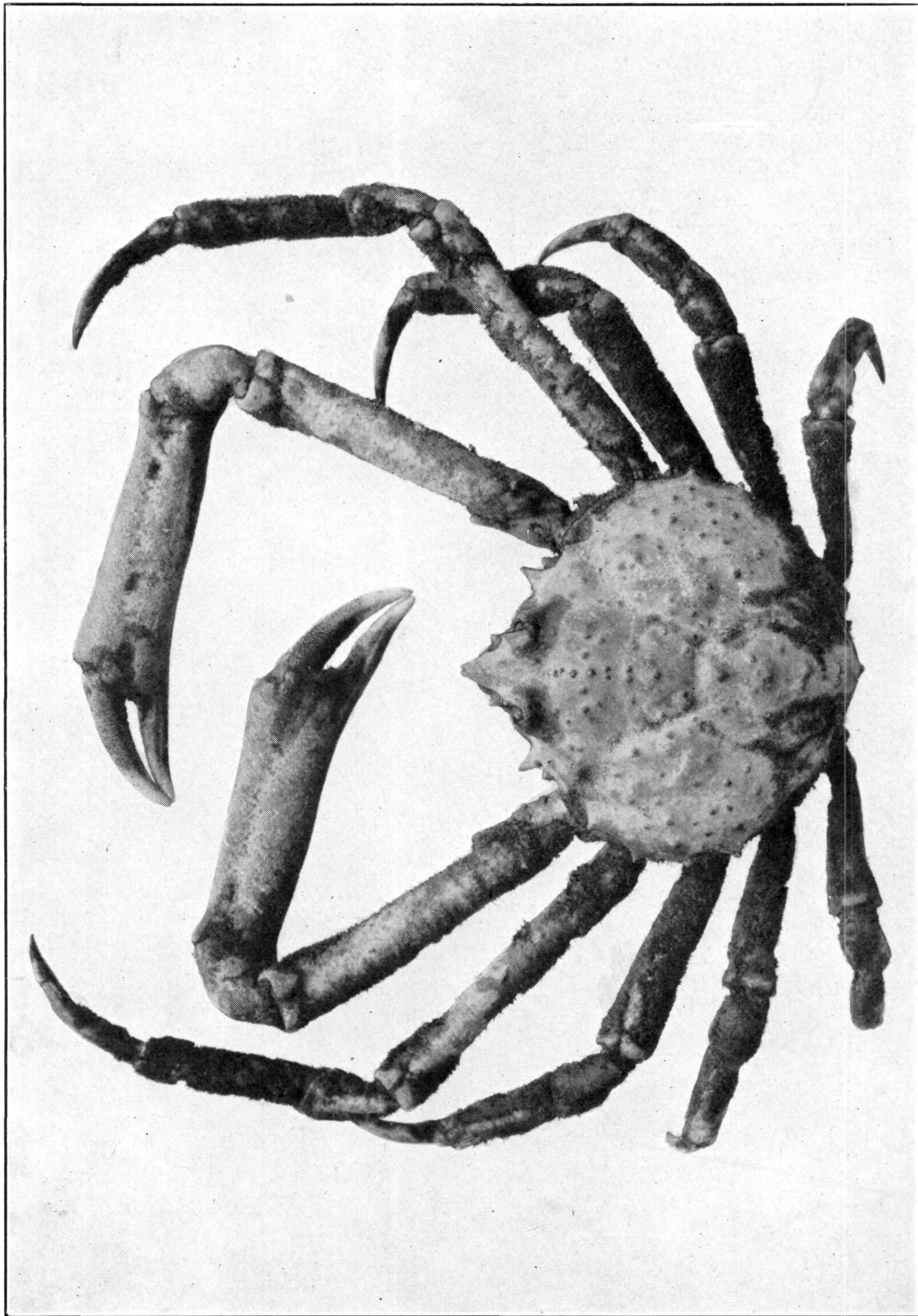
HOLOPLITES ARMATA. (PAGE 307)

FOR EXPLANATION OF PLATE SEE PAGE 575



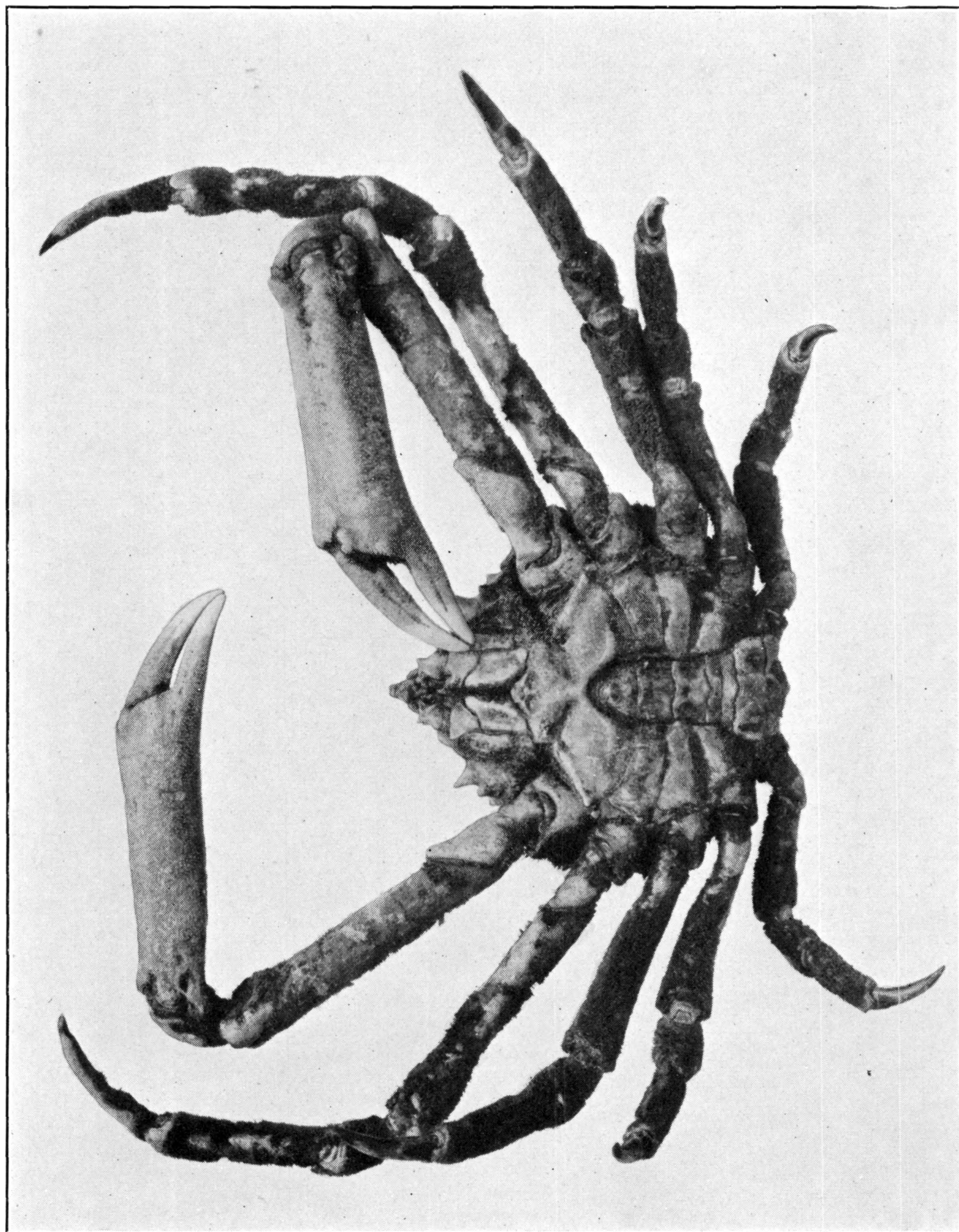
LIBINIA ERINACEA. (PAGE 321)

FOR EXPLANATION OF PLATE SEE PAGE 575



LIBINIA EMARGINATA. (PAGE 311)

FOR EXPLANATION OF PLATE SEE PAGE 575



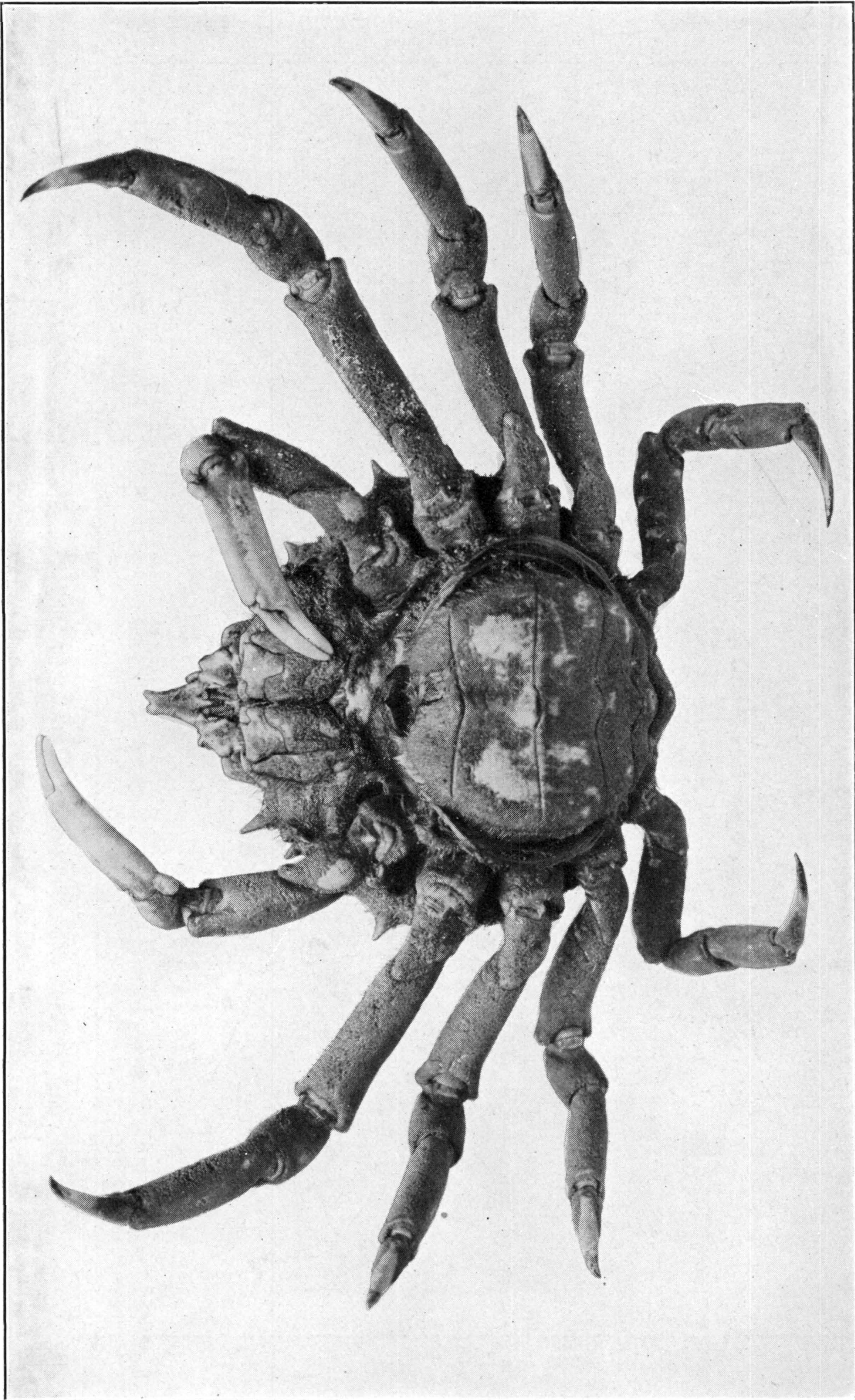
LIBINIA EMARGINATA. (PAGE 311)

FOR EXPLANATION OF PLATE SEE PAGE 575



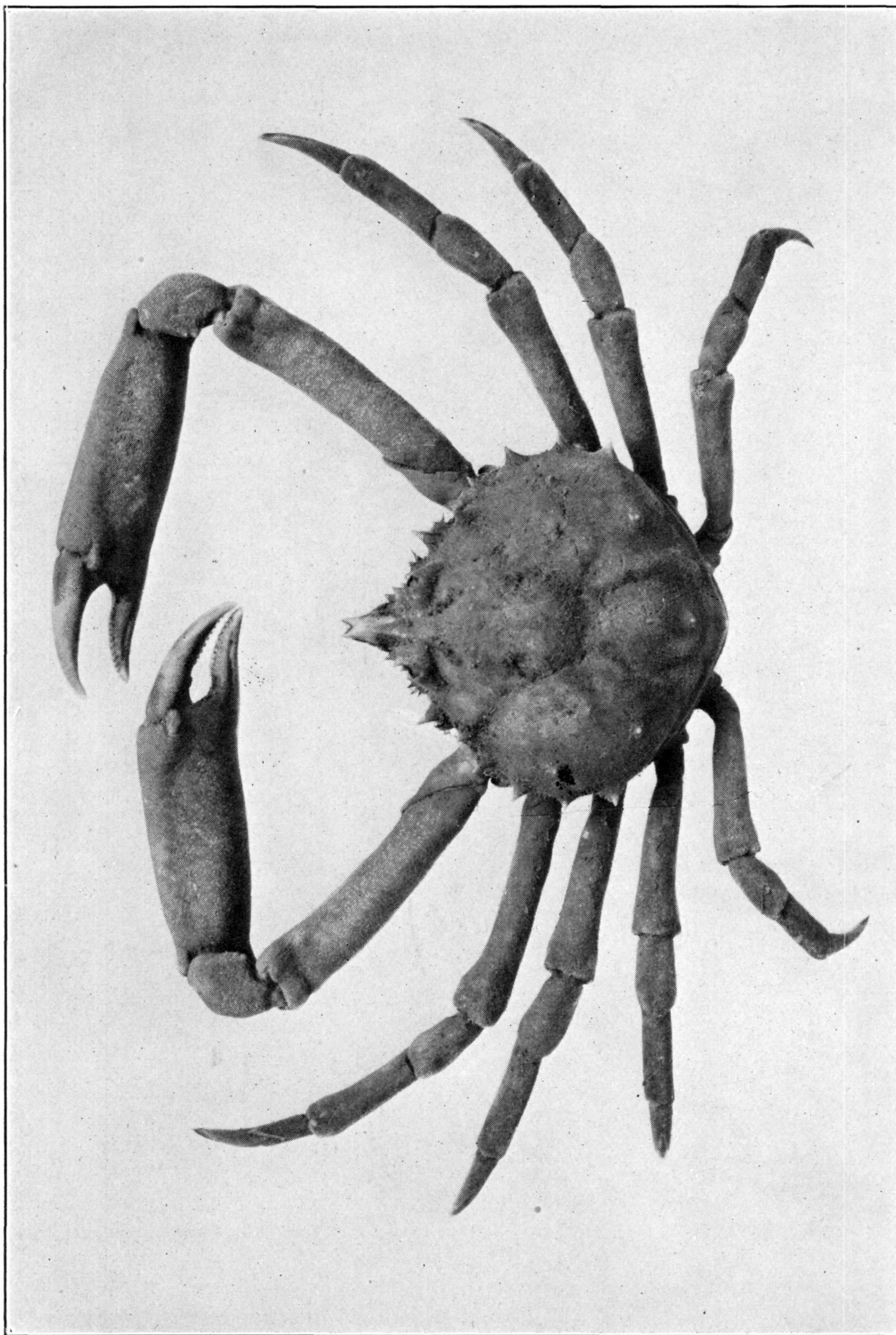
LIBINIA EMARGINATA, VARIETY. (PAGE 312)

FOR EXPLANATION OF PLATE SEE PAGE 575



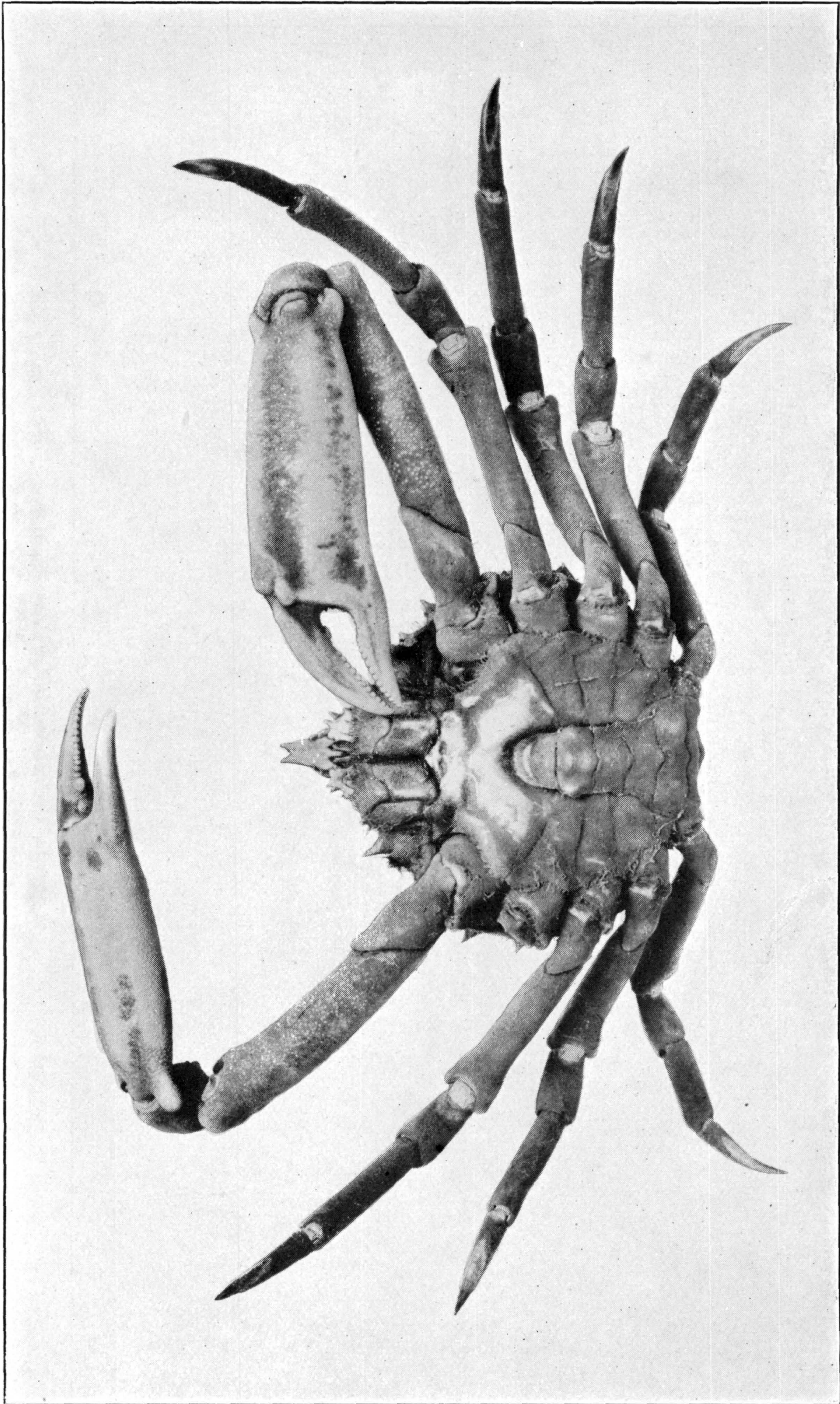
LIBINIA EMARGINATA, VARIETY. (PAGE 312)

FOR EXPLANATION OF PLATE SEE PAGE 575



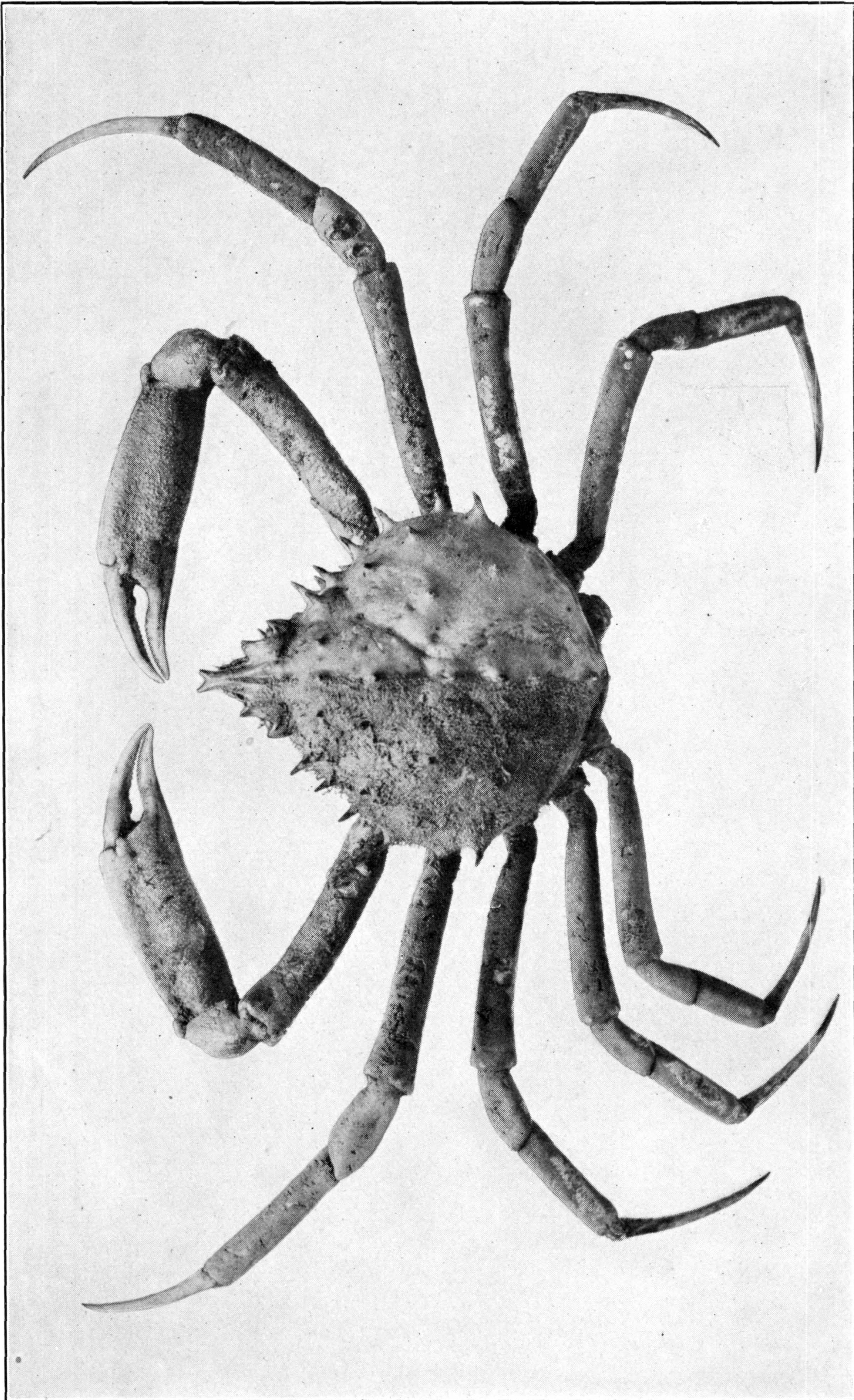
LIBINIA DUBIA. (PAGE 313)

FOR EXPLANATION OF PLATE SEE PAGE 575



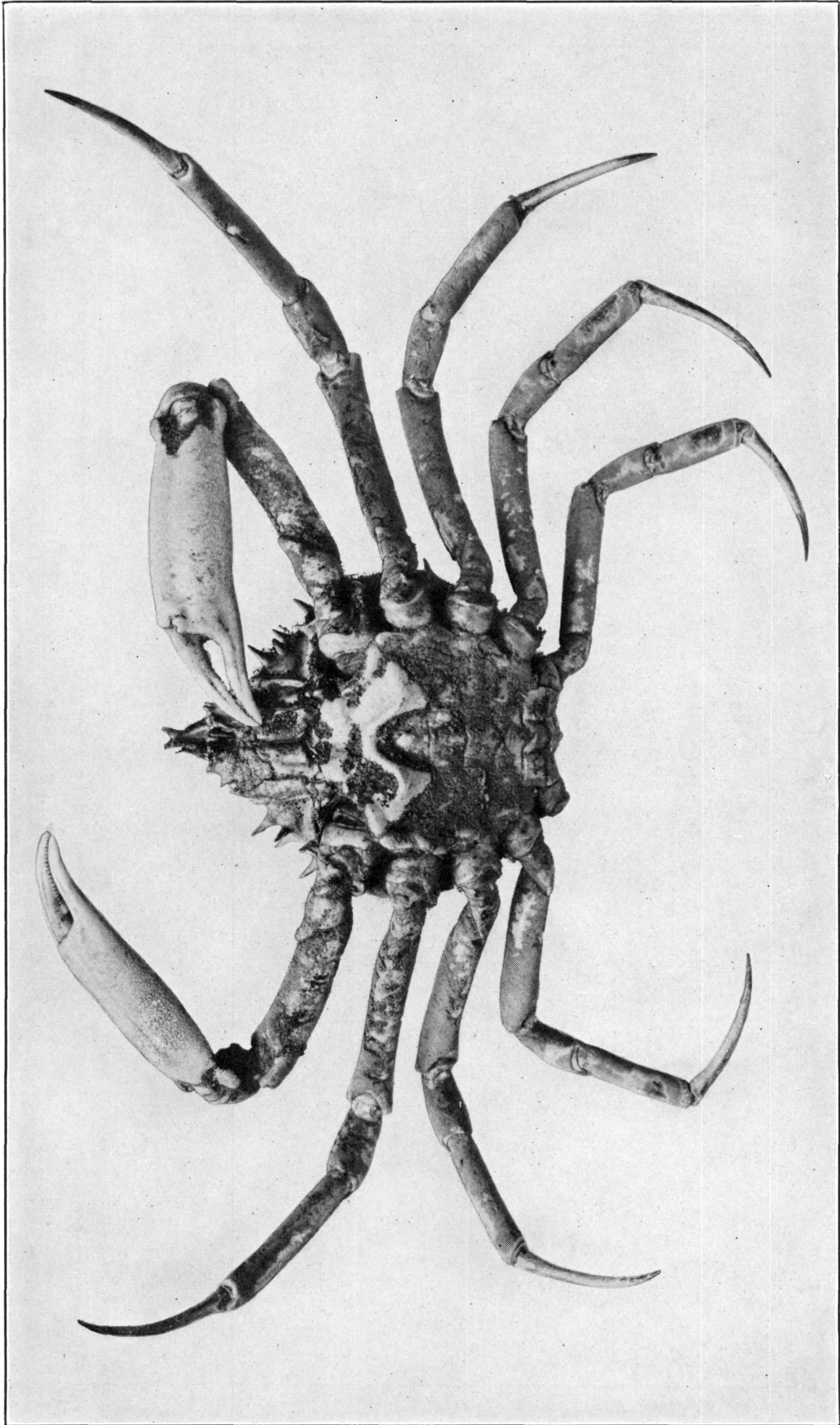
LIBINIA DUBIA. (PAGE 313)

FOR EXPLANATION OF PLATE SEE PAGE 575



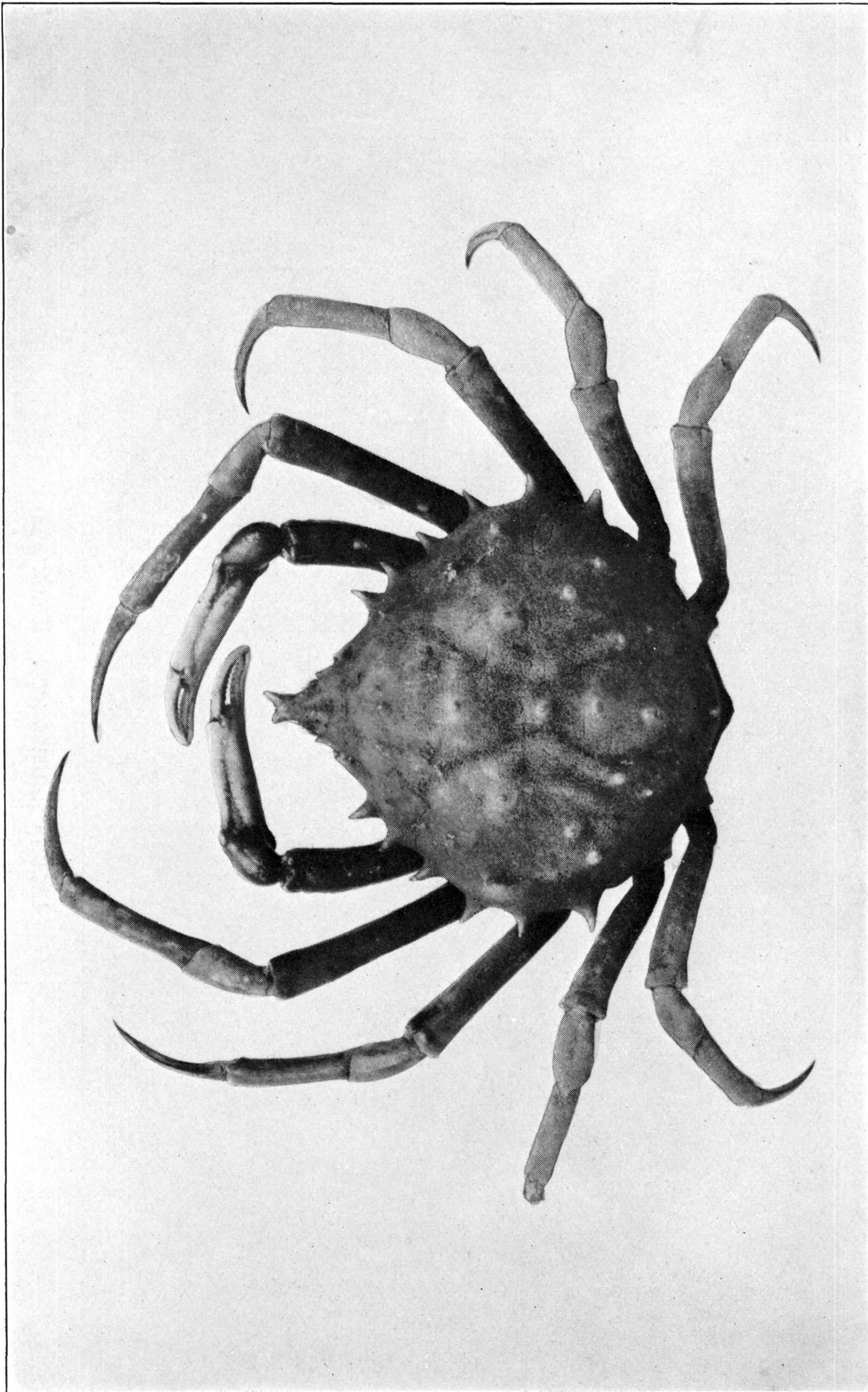
LIBINIA RHOMBOIDEA. (PAGE 323)

FOR EXPLANATION OF PLATE SEE PAGE 575



LIBINIA RHOMBOIDEA. (PAGE 323)

FOR EXPLANATION OF PLATE SEE PAGE 575



LIBINIA FERREIRAE. (PAGE 324)

FOR EXPLANATION OF PLATE SEE PAGE 575