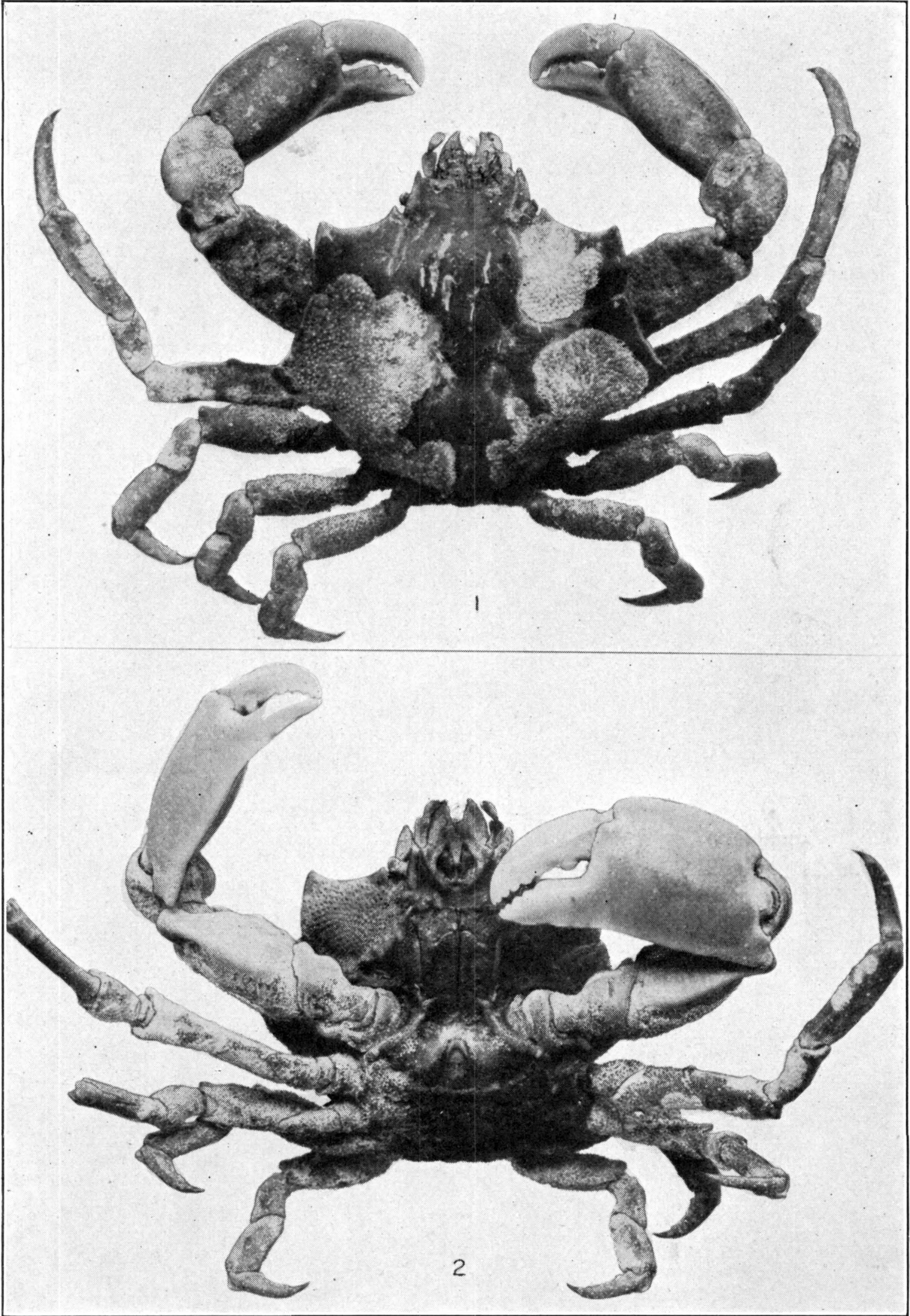


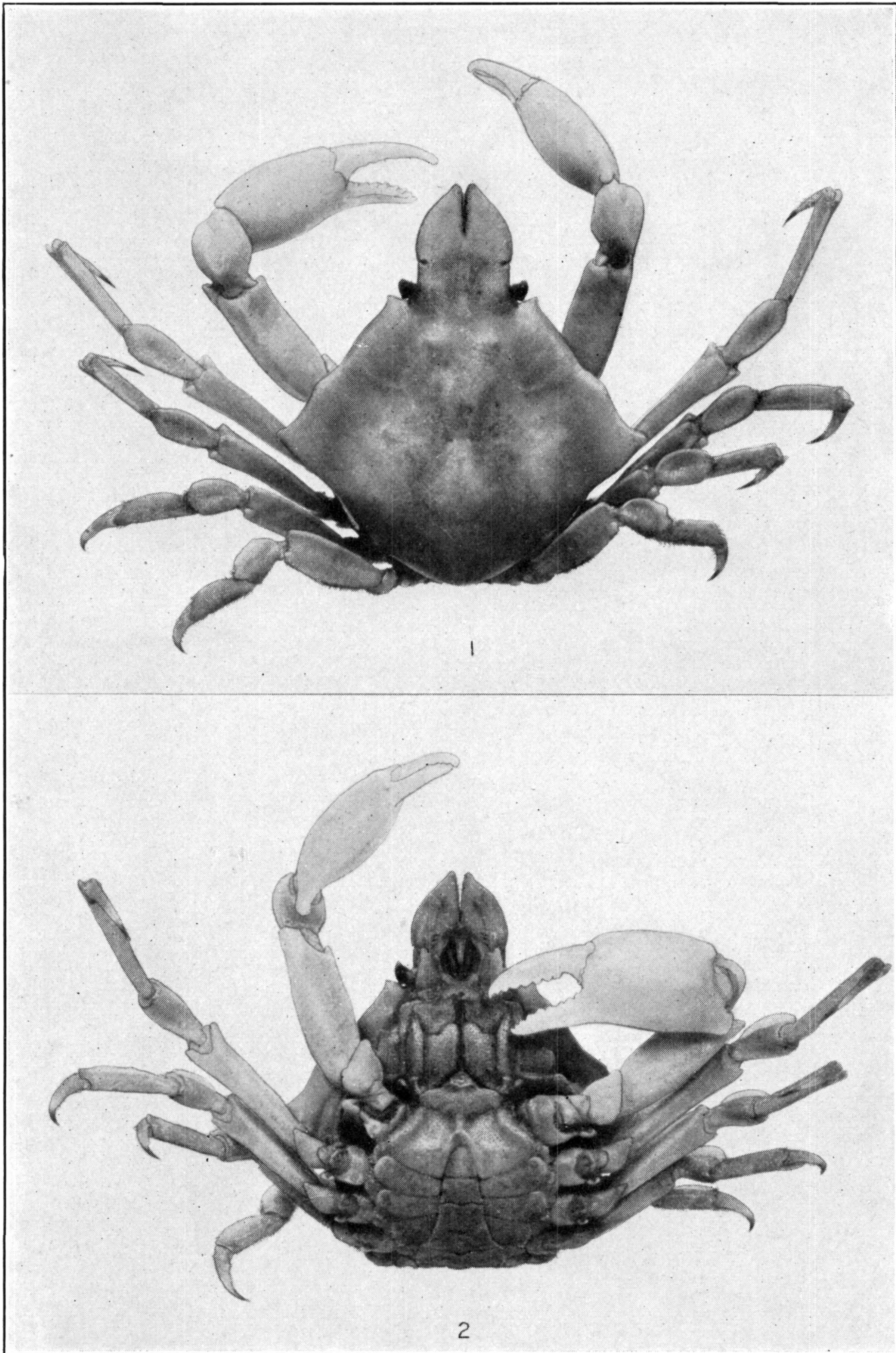
1-4. PUGETTIA DALLI. (PAGE 178.) 5-7. P. VENETIAE. (PAGE 180)

FOR EXPLANATION OF PLATE SEE PAGE 571



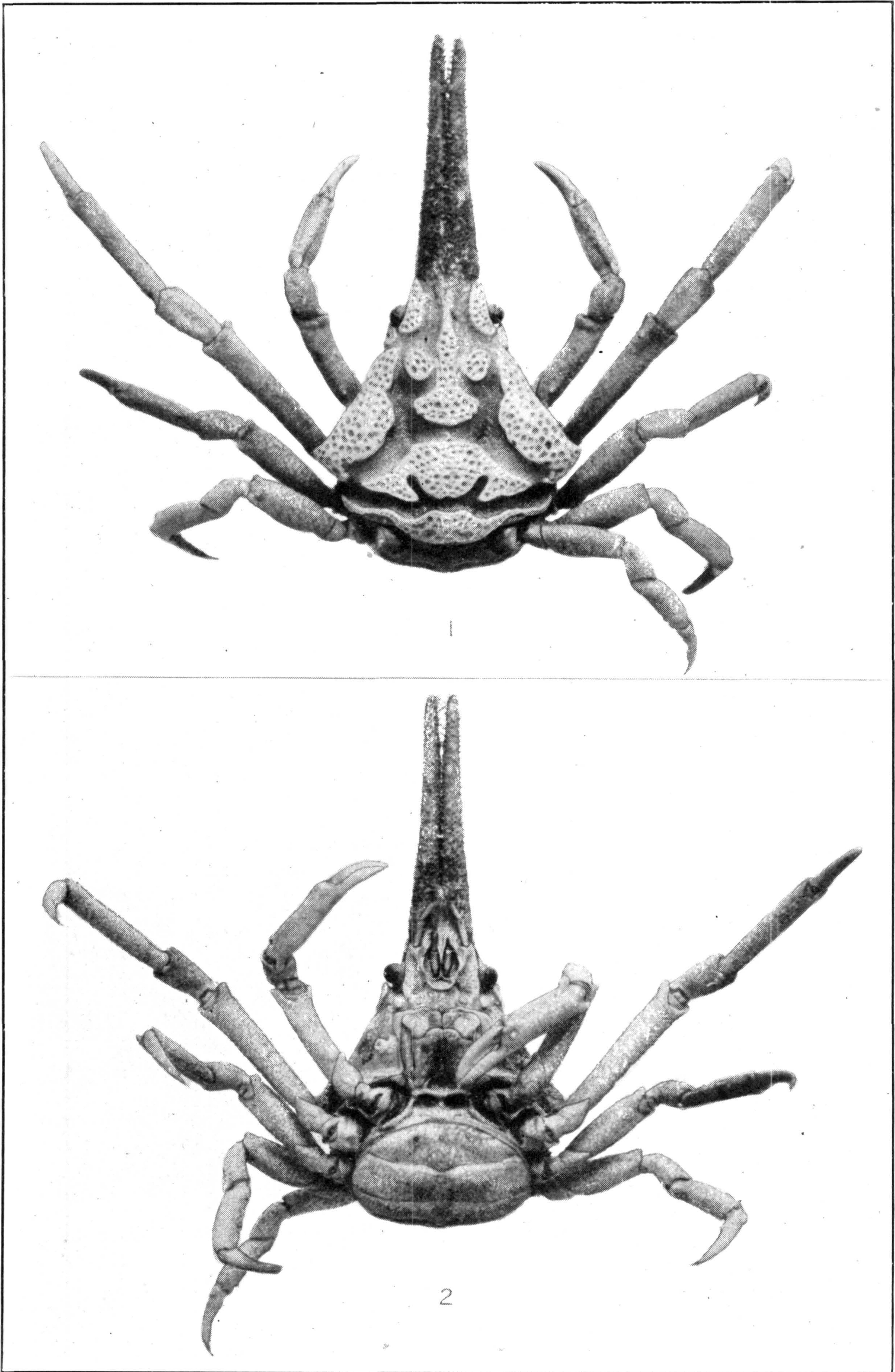
MIMULUS FOLIATUS. (PAGE 182)

FOR EXPLANATION OF PLATE SEE PAGE 571



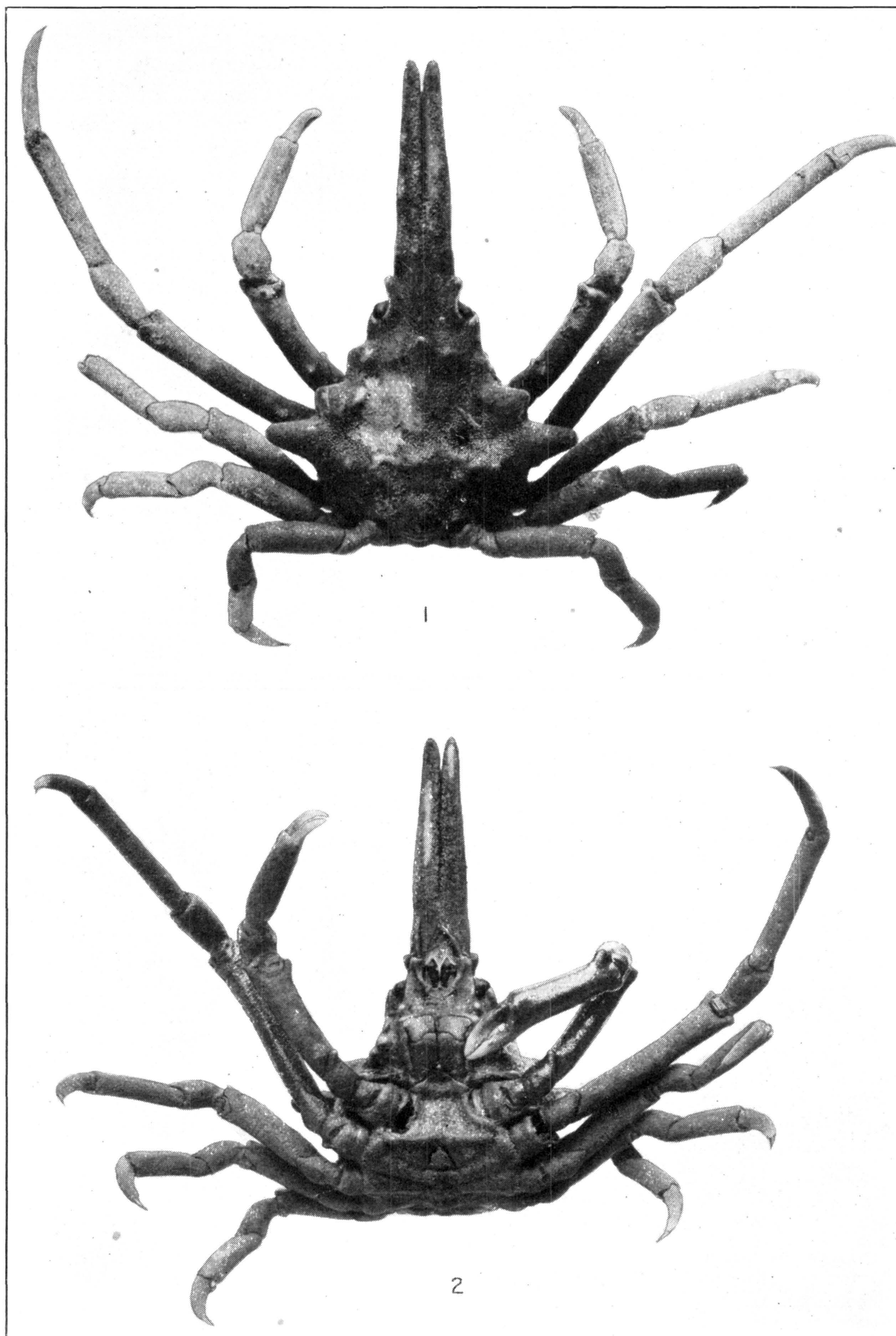
LEUCIPPA PENTAGONA. (PAGE 184)

FOR EXPLANATION OF PLATE SEE PAGE 571



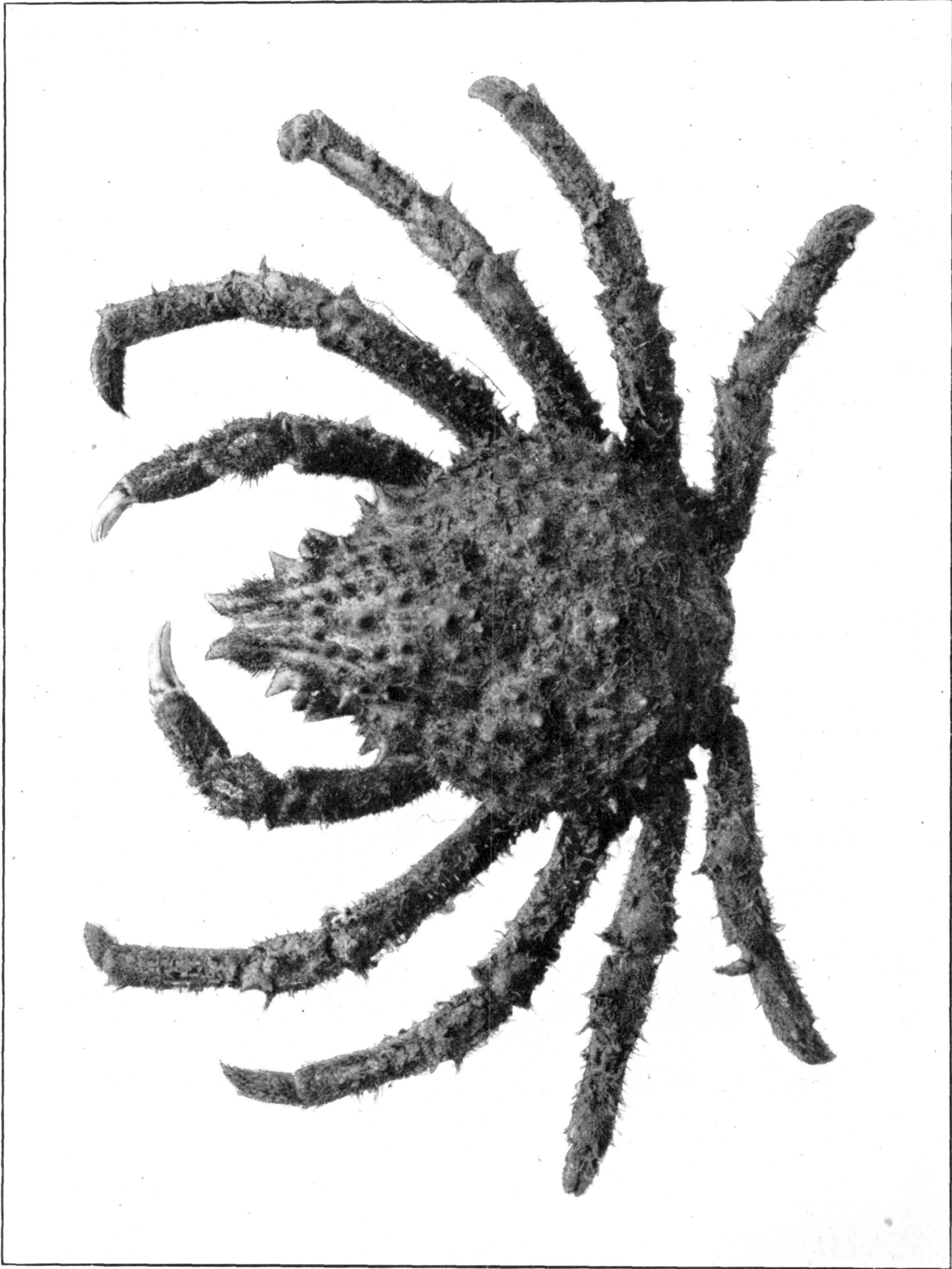
SPHENOCARCINUS CORROSUS. (PAGE 187)

FOR EXPLANATION OF PLATE SEE PAGE 571



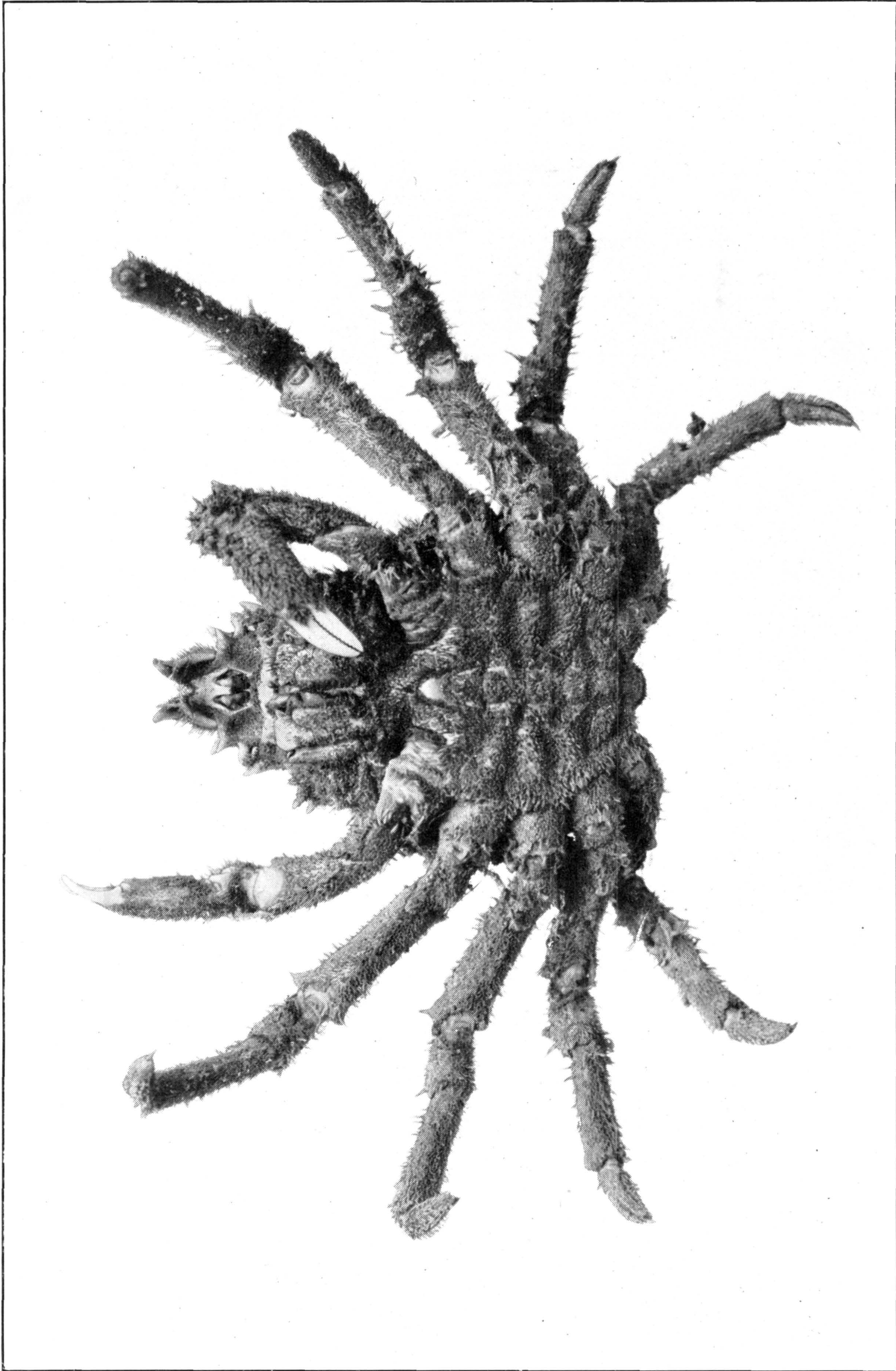
SPHENOCARCINUS AGASSIZI. (PAGE 188)

FOR EXPLANATION OF PLATE SEE PAGE 571



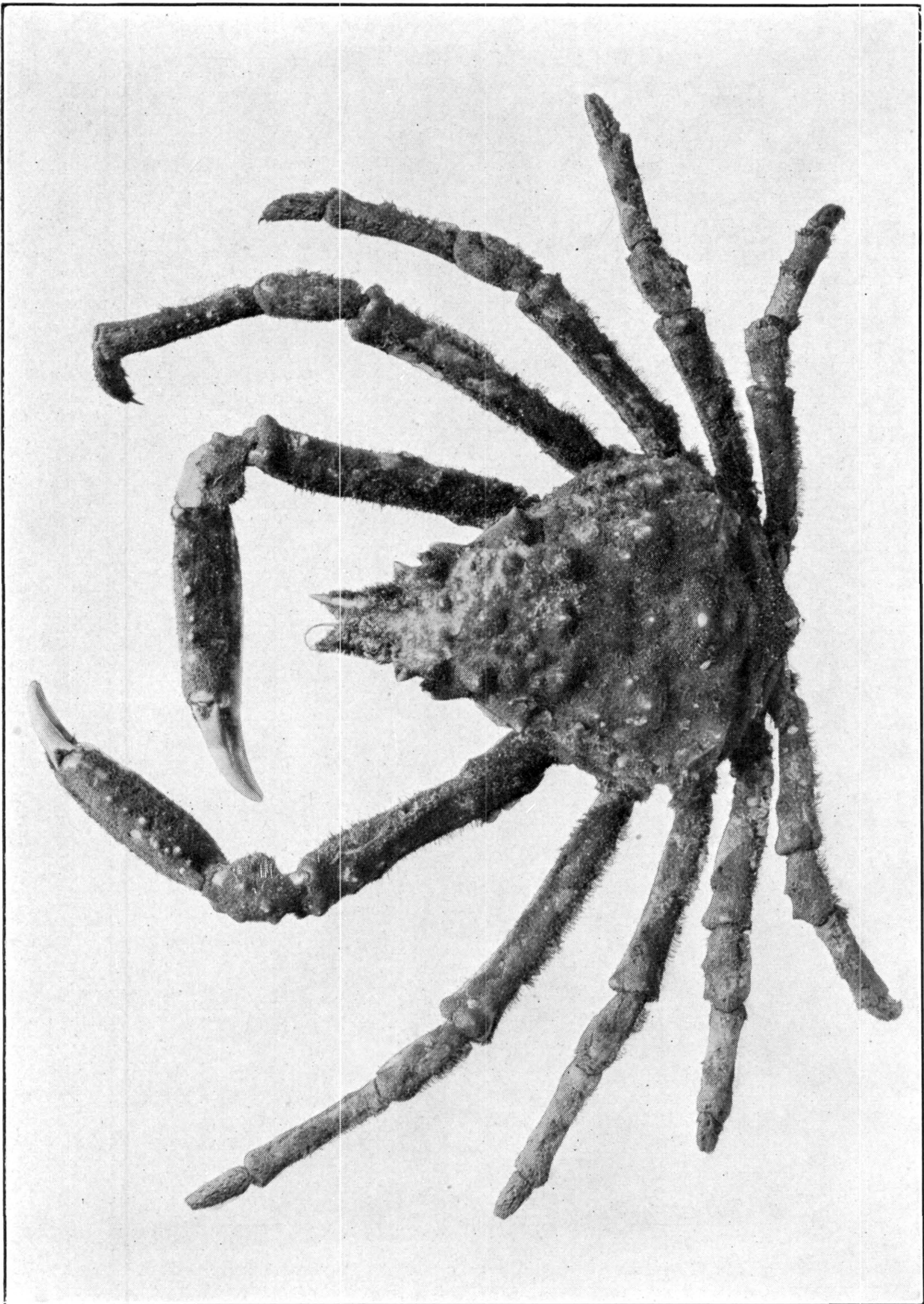
LOXORHYNCHUS GRANDIS. (PAGE 198)

FOR EXPLANATION OF PLATE SEE PAGE 571



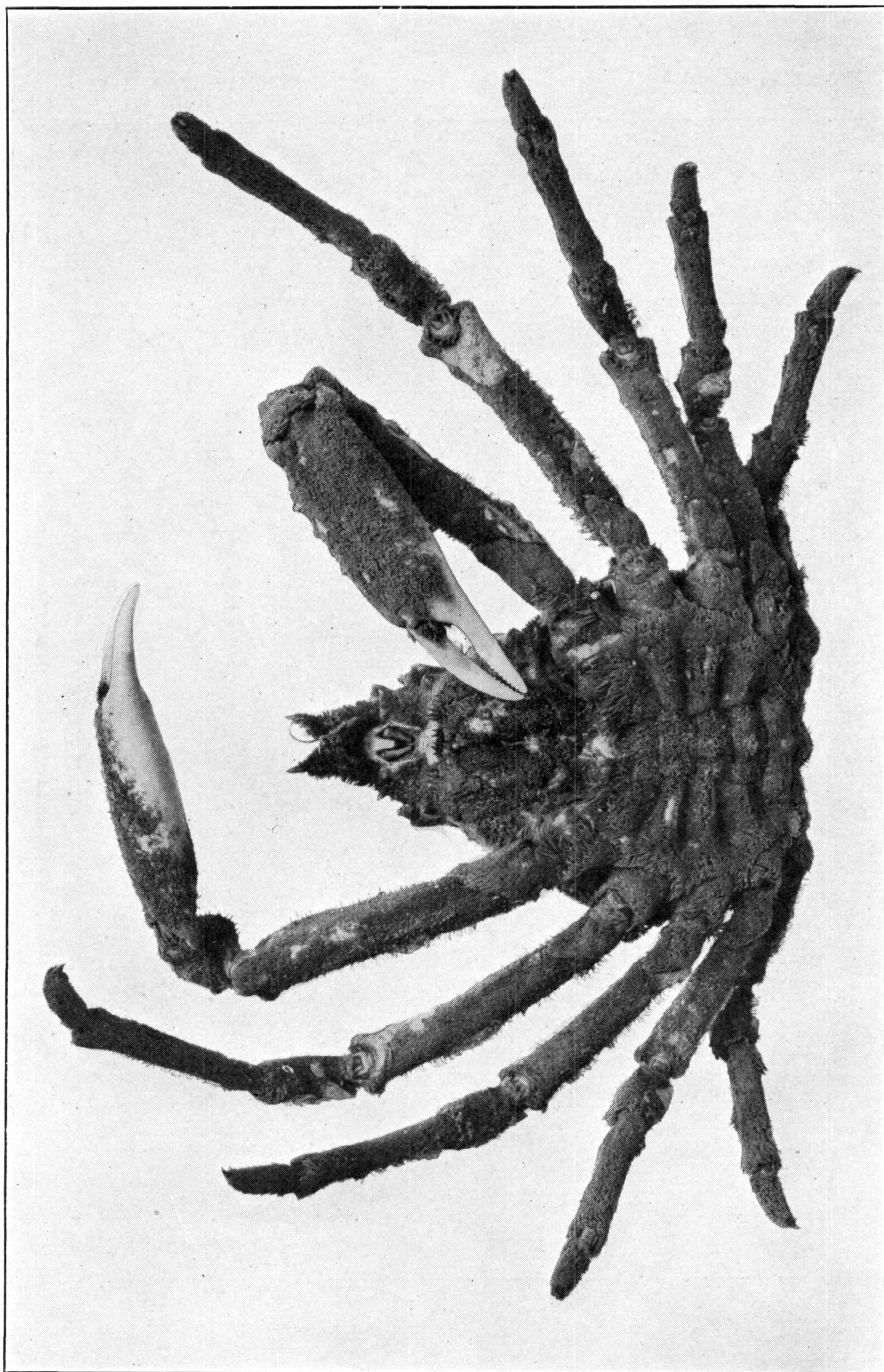
LOXORHYNCHUS GRANDIS. (PAGE 198)

FOR EXPLANATION OF PLATE SEE PAGE 571



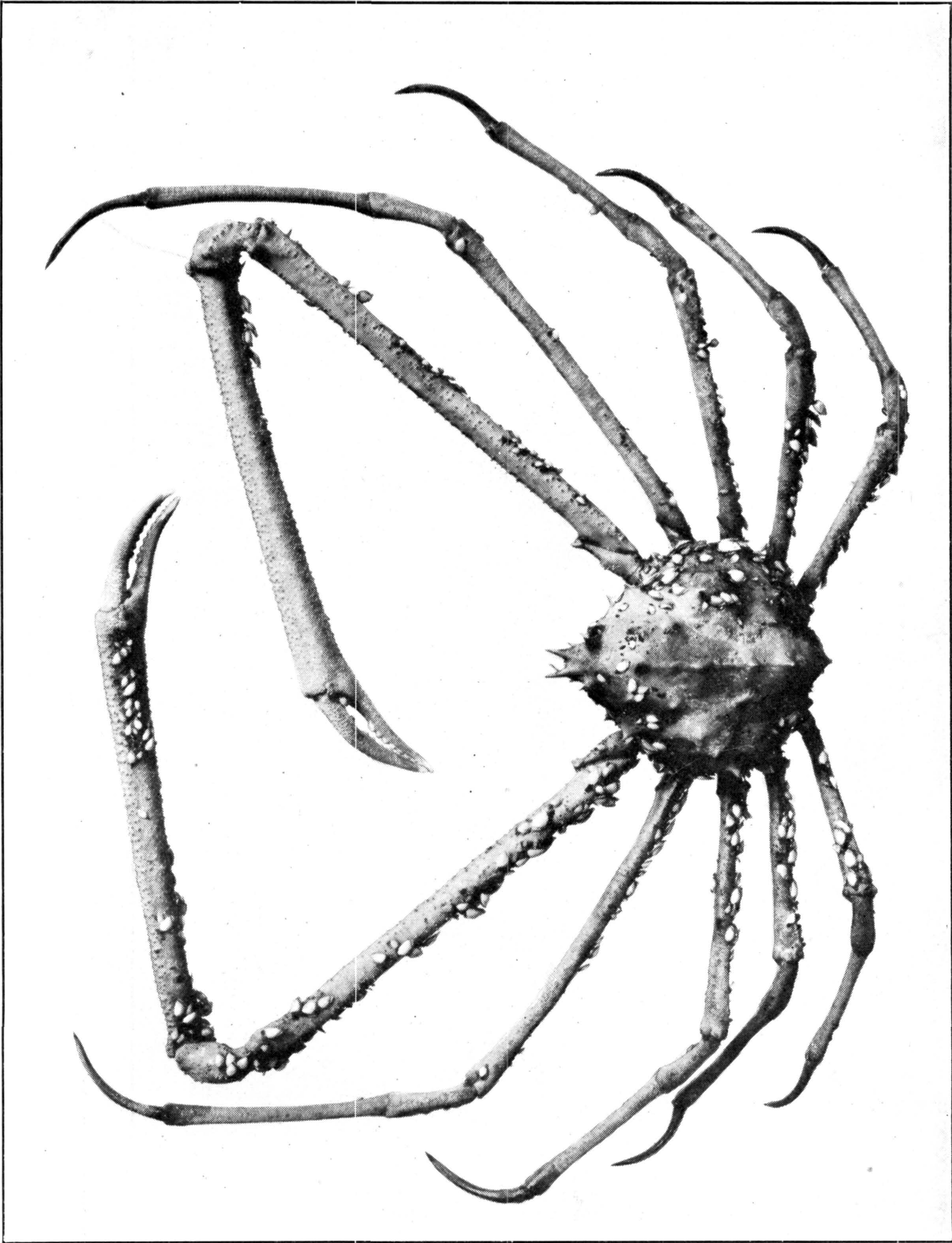
LOXORHYNCHUS CRISPATUS. (PAGE 200)

FOR EXPLANATION OF PLATE SEE PAGE 571



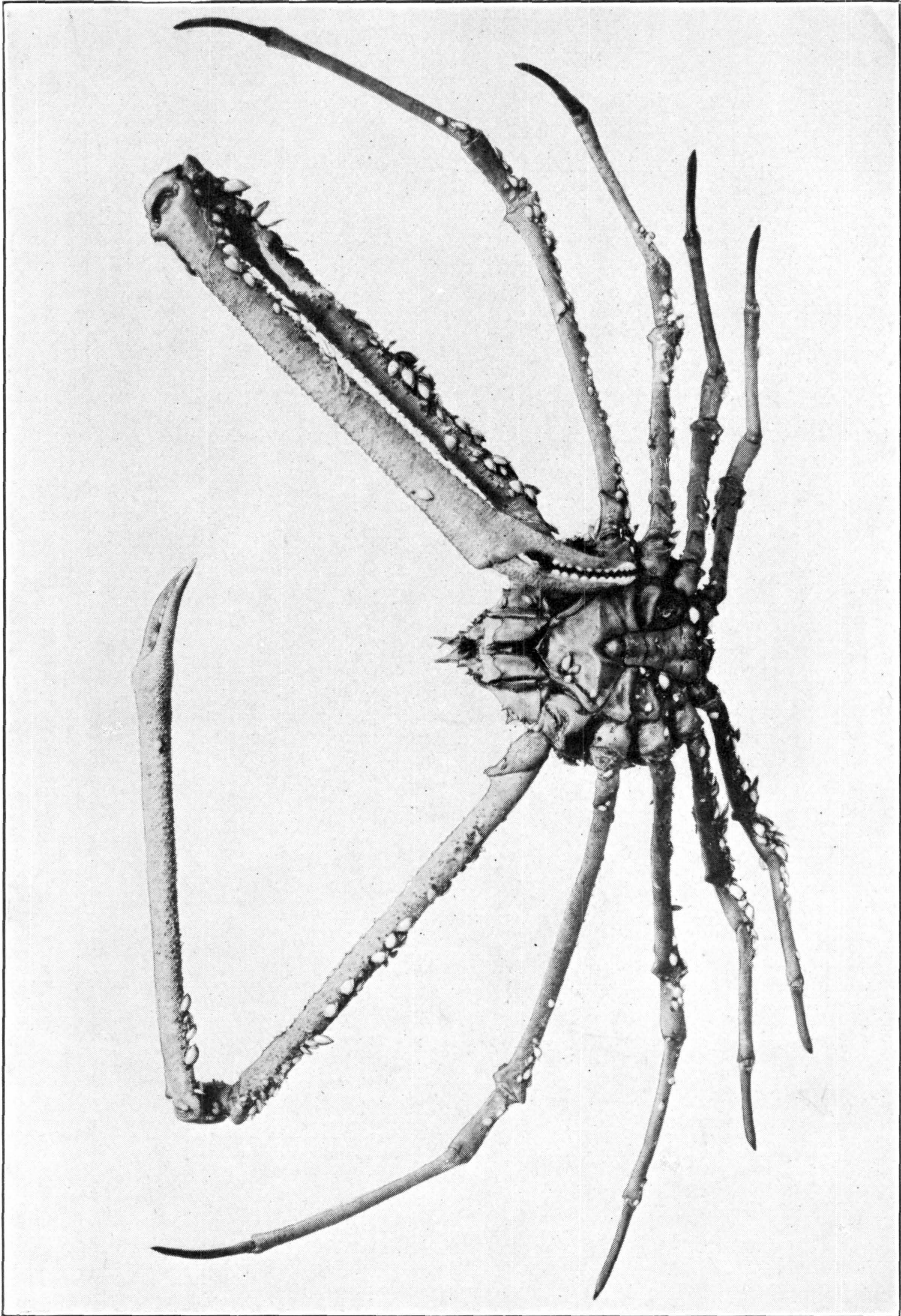
LOXORHYNCHUS CRISPATUS. (PAGE 200)

FOR EXPLANATION OF PLATE SEE PAGE 572



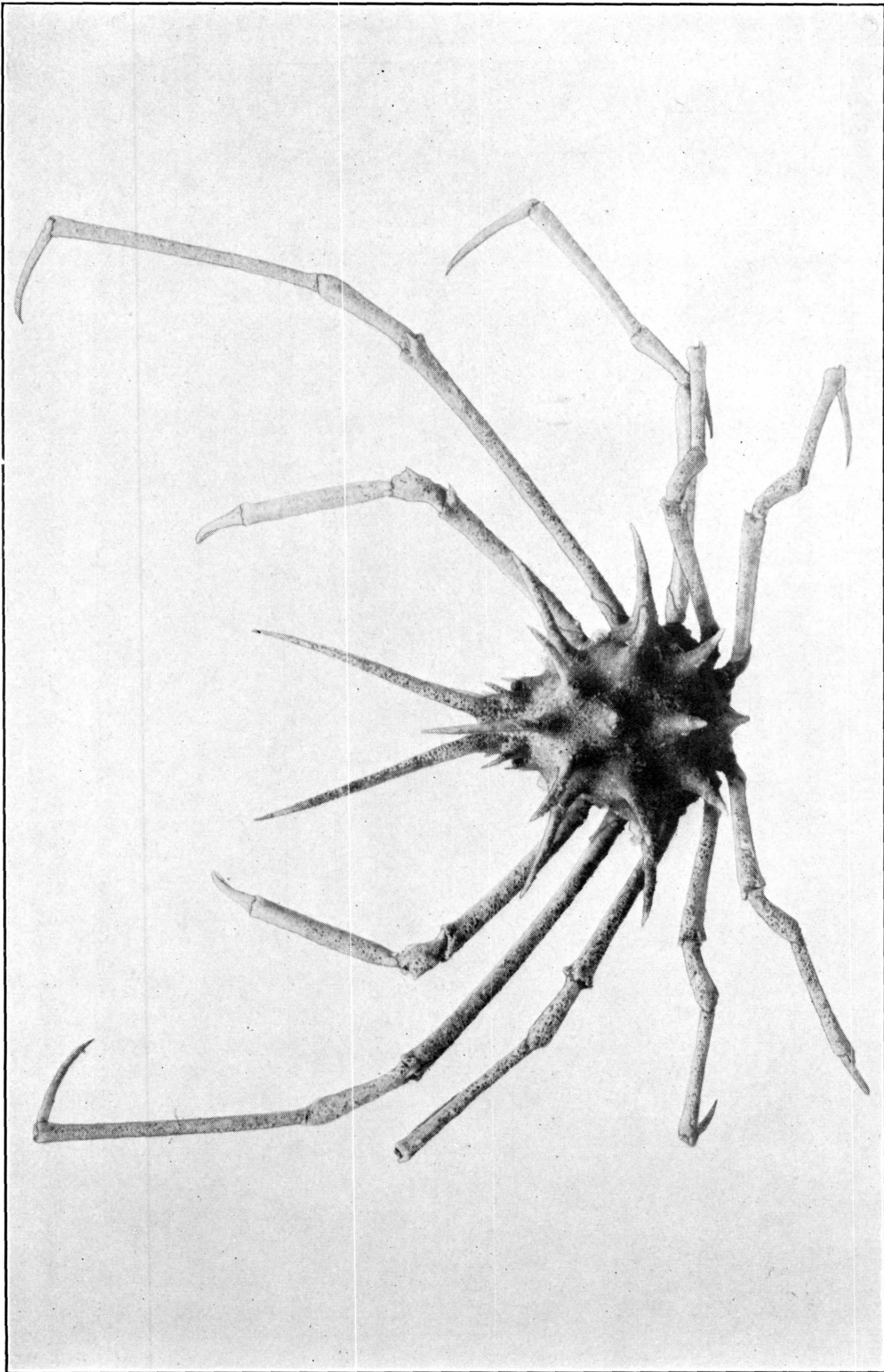
ROCHINIA CRASSA. (PAGE 210)

FOR EXPLANATION OF PLATE SEE PAGE 572



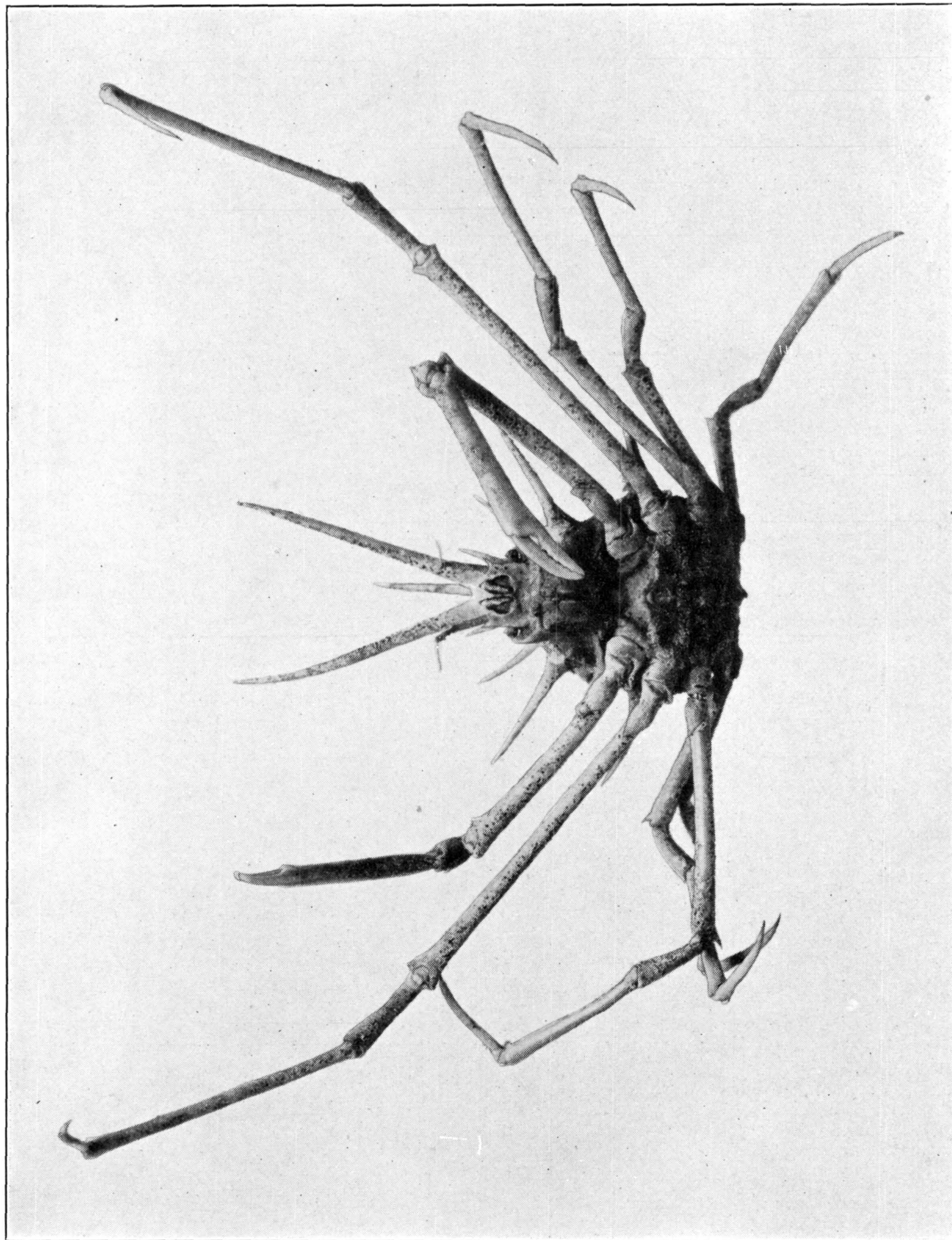
ROCHINIA CRASSA. (PAGE 210)

FOR EXPLANATION OF PLATE SEE PAGE 572



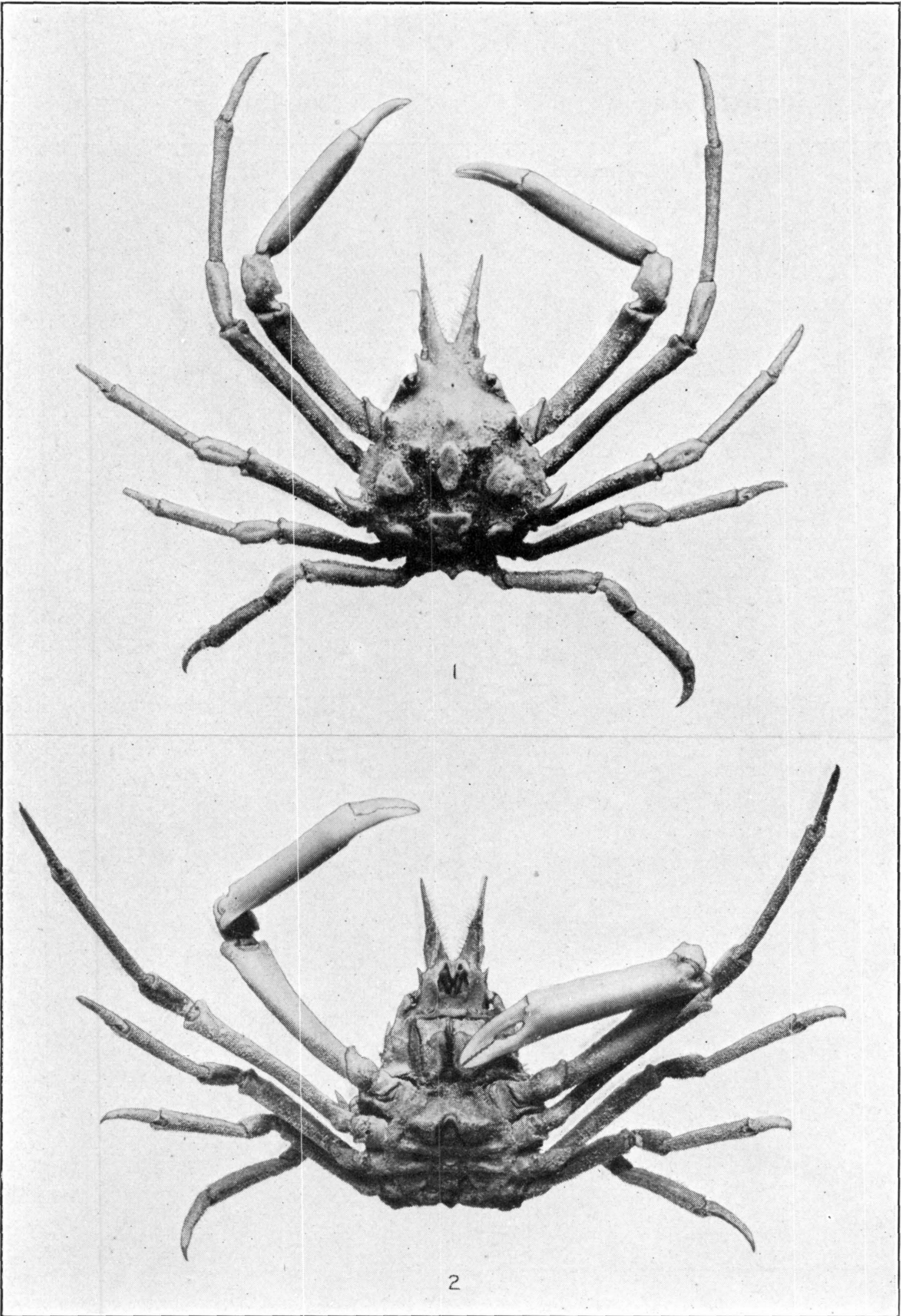
ROCHINIA HYSTRIX. (PAGE 214)

FOR EXPLANATION OF PLATE SEE PAGE 572



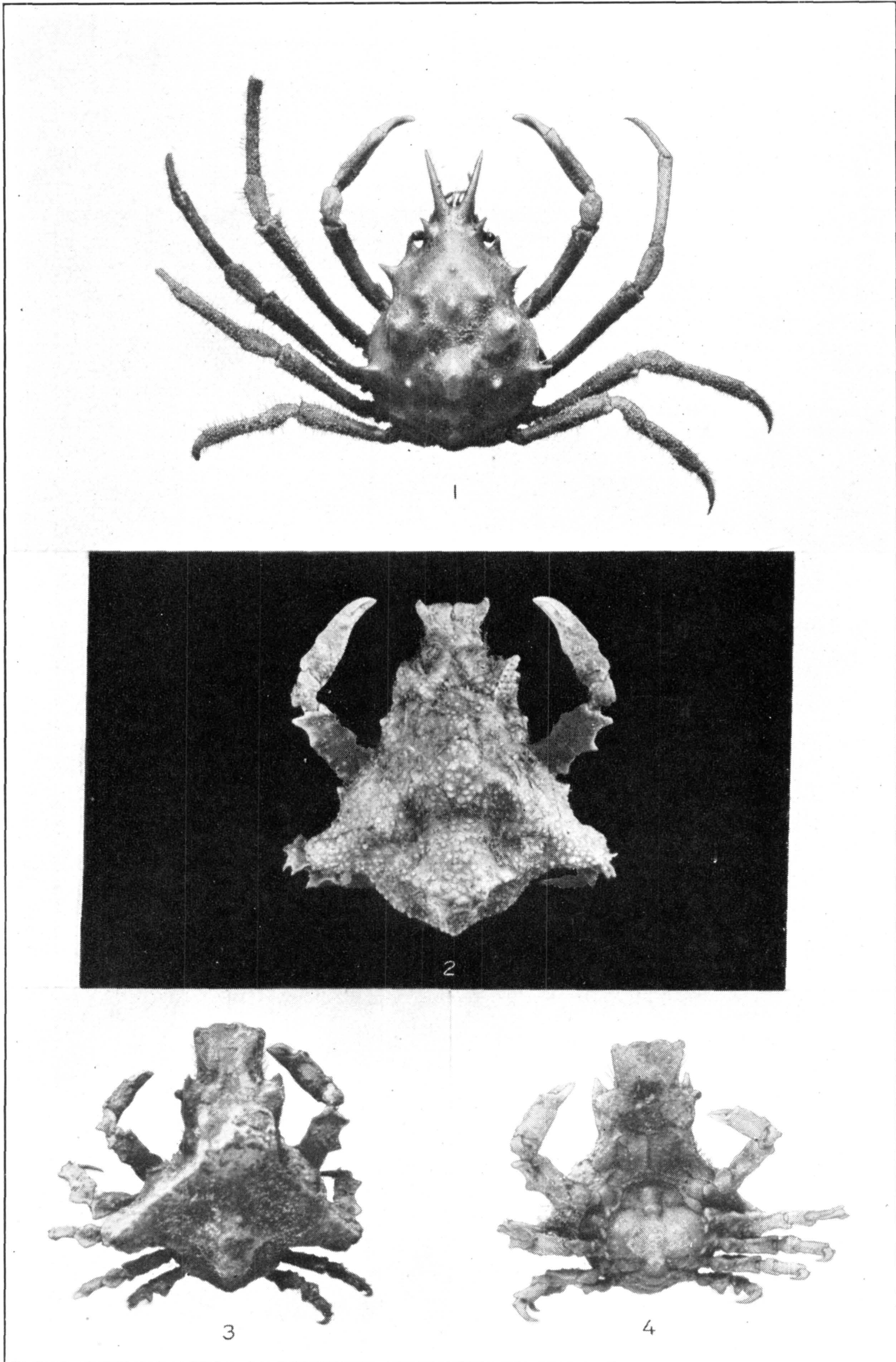
ROCHINIA HYSTRIX. (PAGE 214)

FOR EXPLANATION OF PLATE SEE PAGE 572



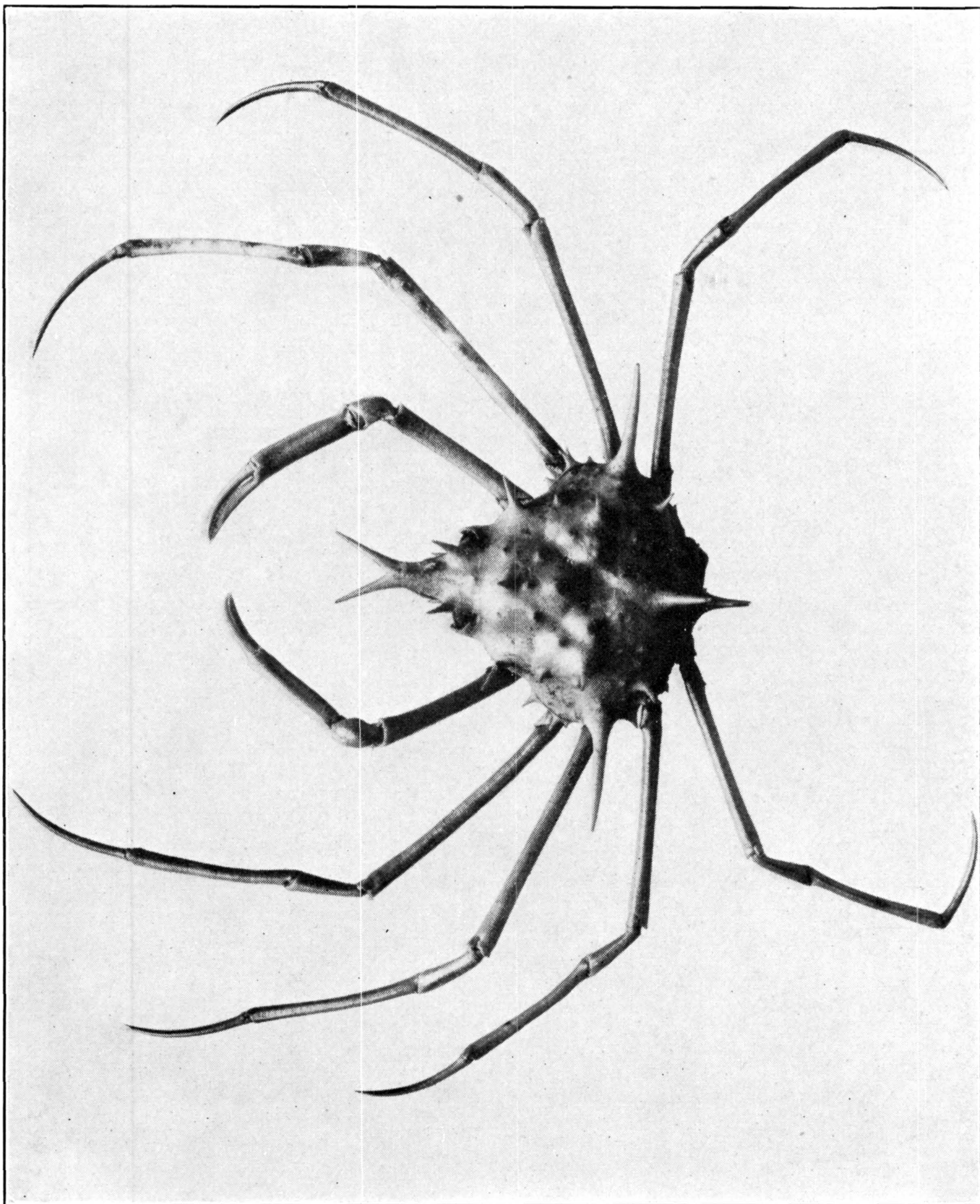
ROCHINIA UMBONATA. (PAGE 222)

FOR EXPLANATION OF PLATE SEE PAGE 572



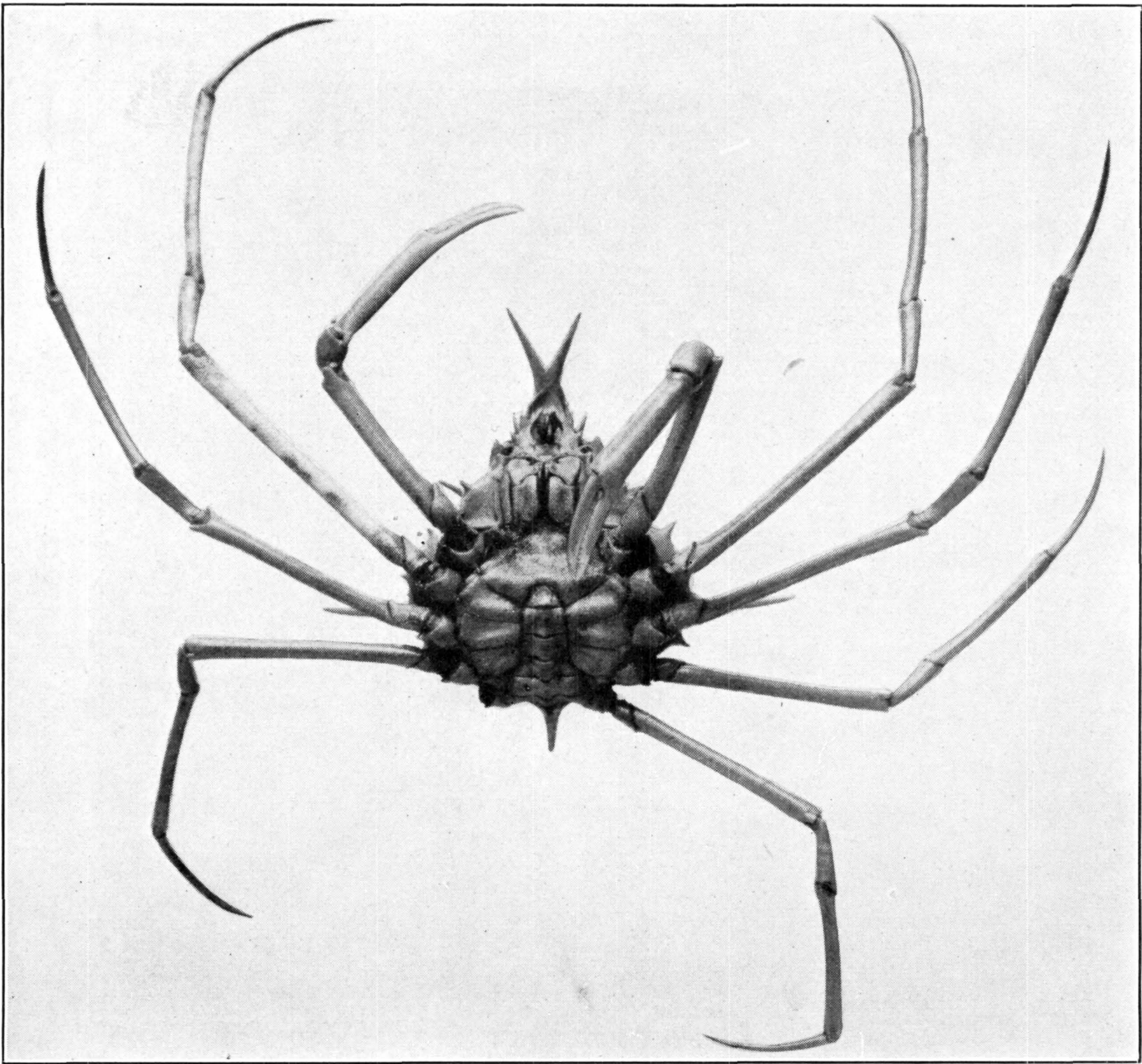
1. *ROCHINIA UMBONATA*. (PAGE 222.) 2. *LISSA BRASILIENSIS*. (PAGE 335.)
3, 4. *L. BICARINATA*. (PAGE 332)

FOR EXPLANATION OF PLATE SEE PAGE 572



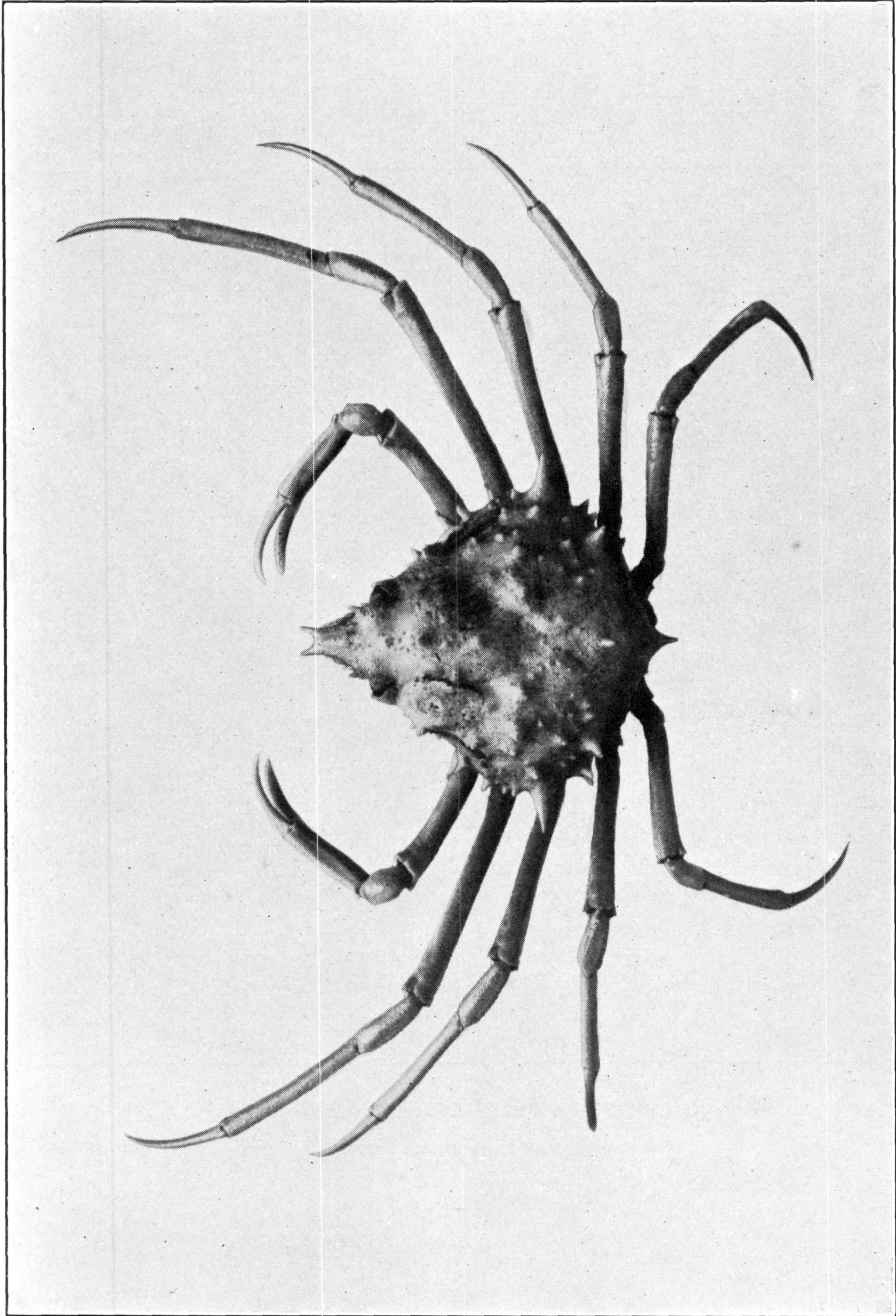
LIBIDOCLAEA SMITHII. (PAGE 226)

FOR EXPLANATION OF PLATE SEE PAGE 572



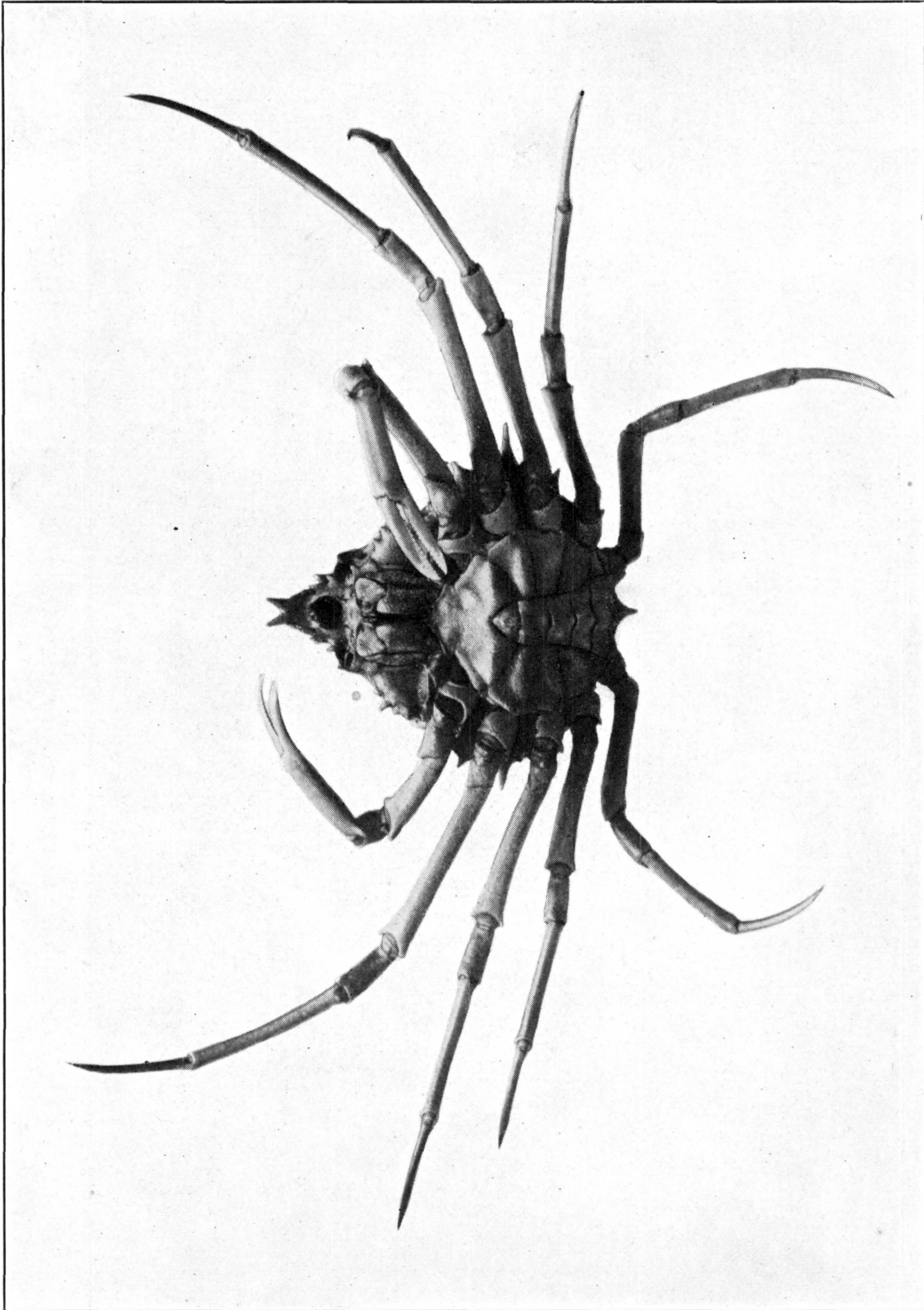
LIBIDOCLAEA SMITHII. (PAGE 226)

FOR EXPLANATION OF PLATE SEE PAGE 572



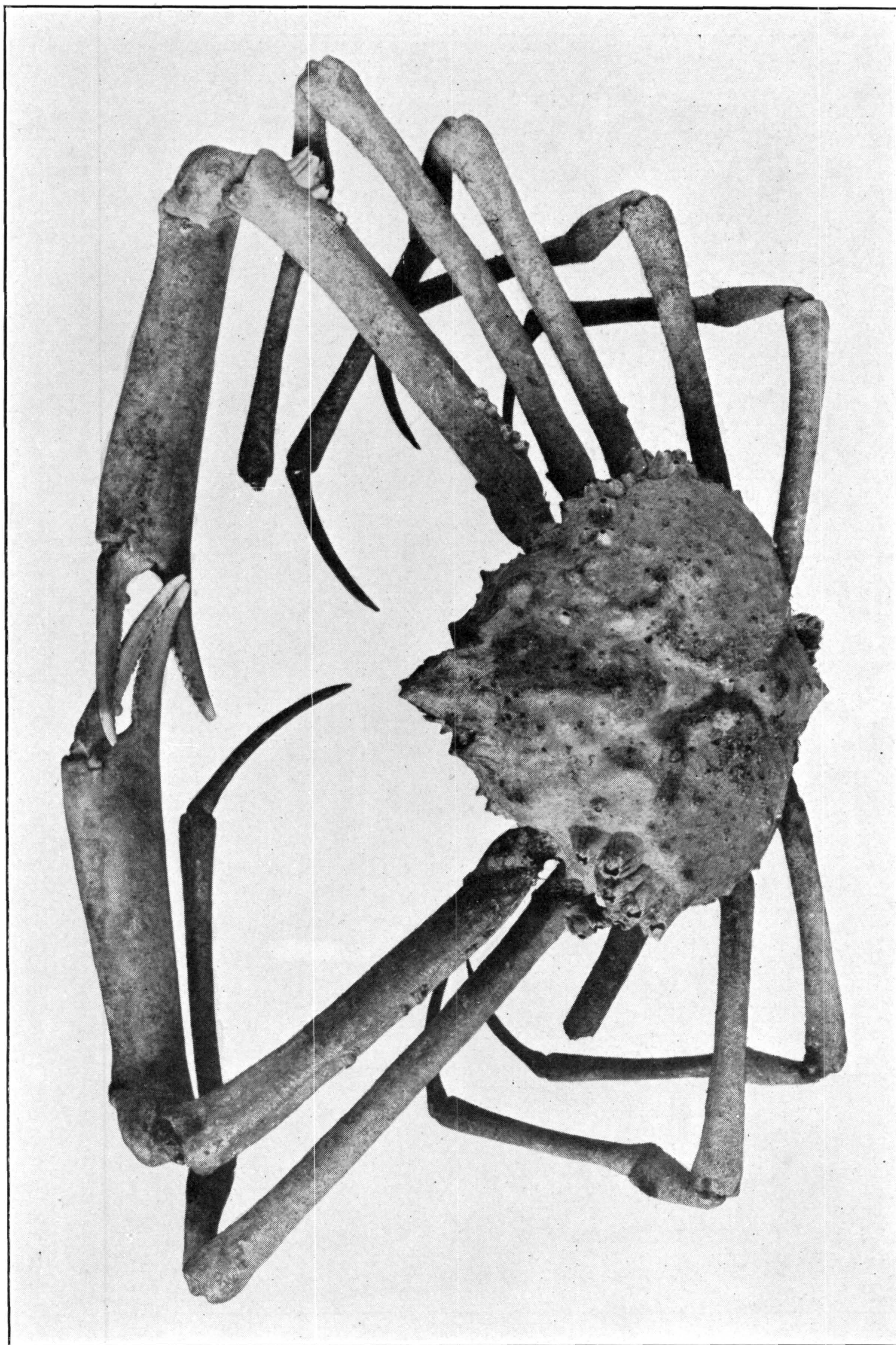
LIBIDOCLAEA GRANARIA. (PAGE 224)

FOR EXPLANATION OF PLATE SEE PAGE 572



LIBIDOCLAEA GRANARIA. (PAGE 224)

FOR EXPLANATION OF PLATE SEE PAGE 572



LIBIDOCLAEA GRANARIA. (PAGE 224)

FOR EXPLANATION OF PLATE SEE PAGE 572