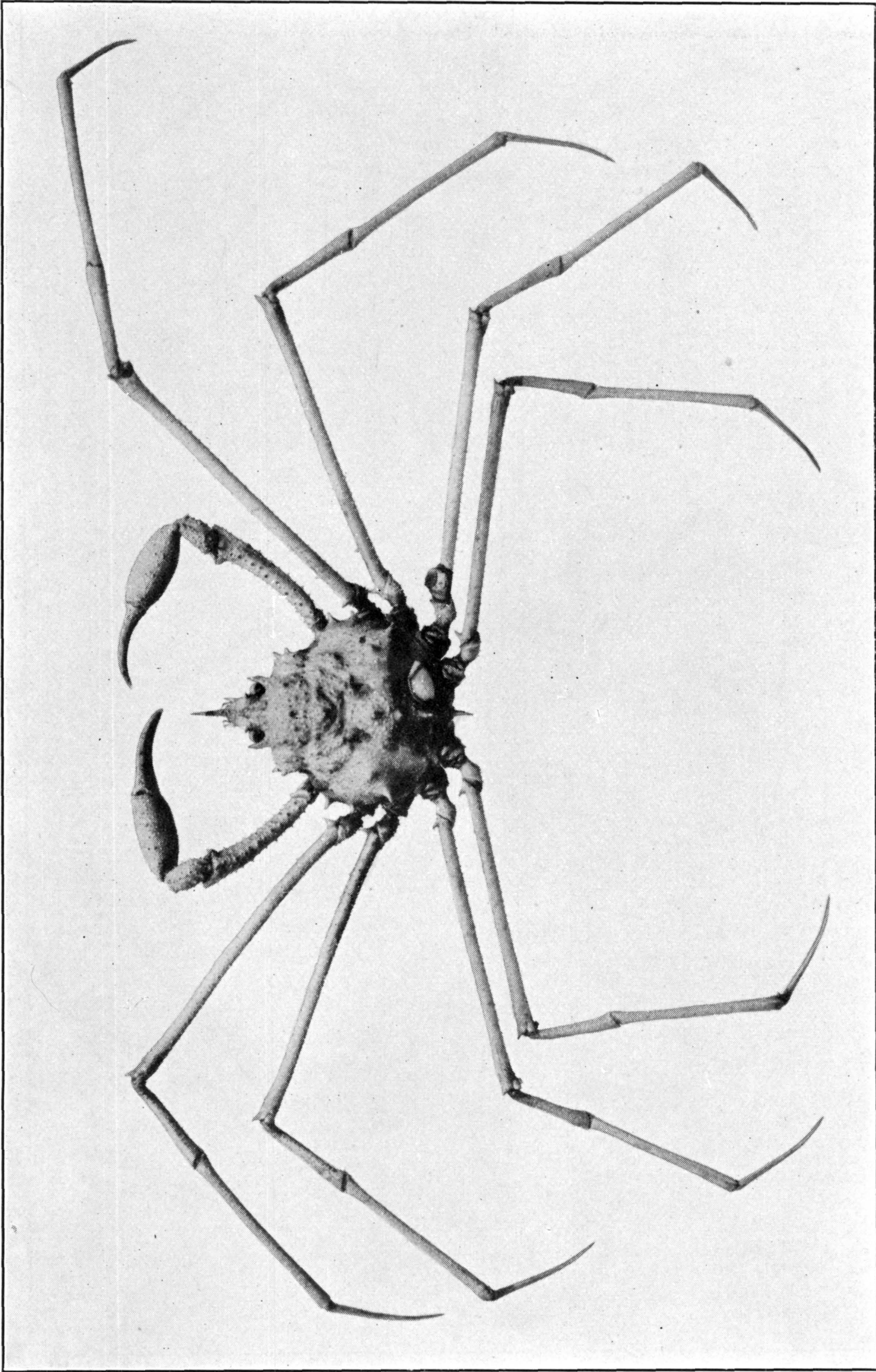


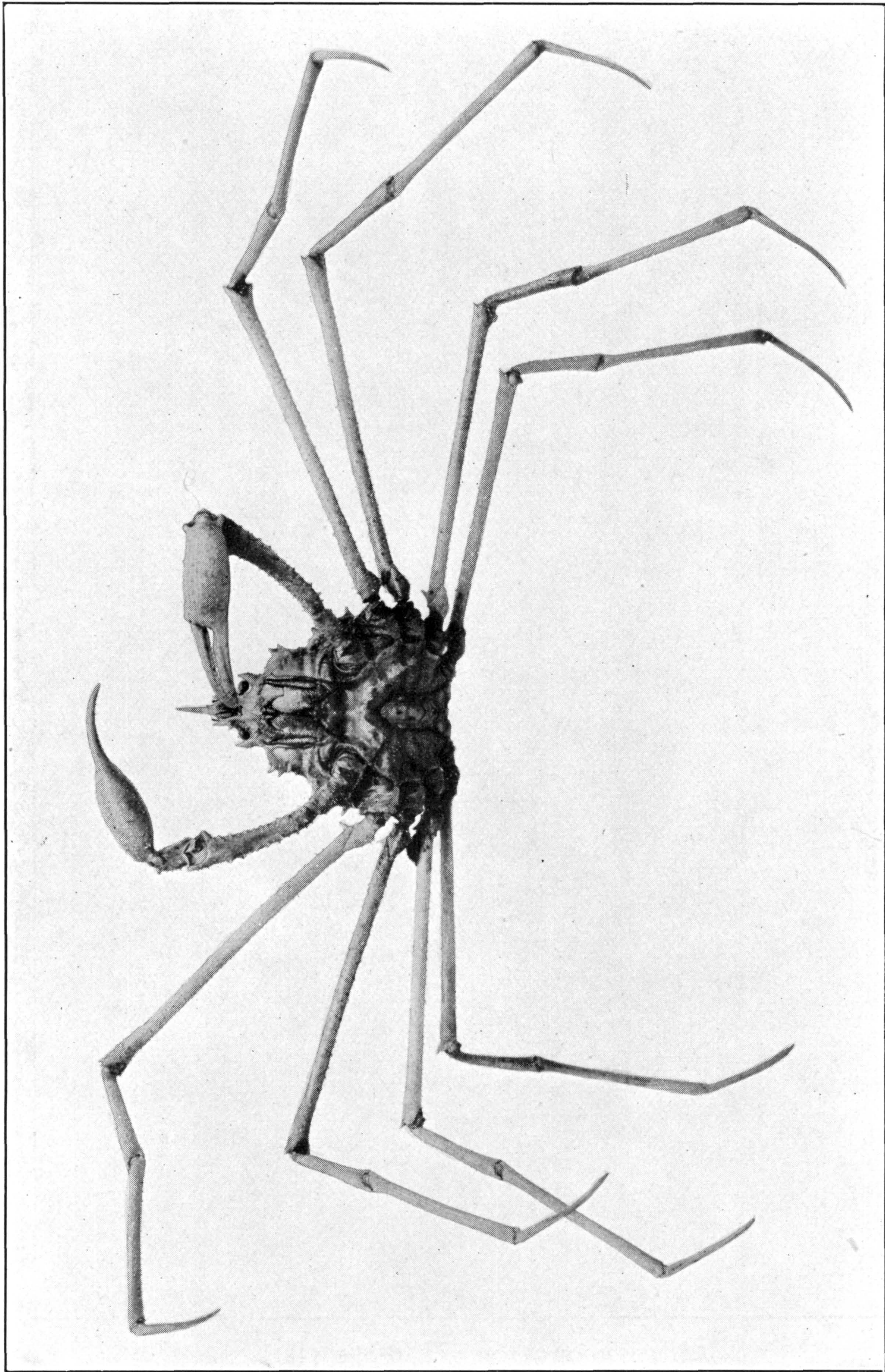
PYROMAIA CUSPIDATA. (PAGE 129)

FOR EXPLANATION OF PLATE SEE PAGE 569



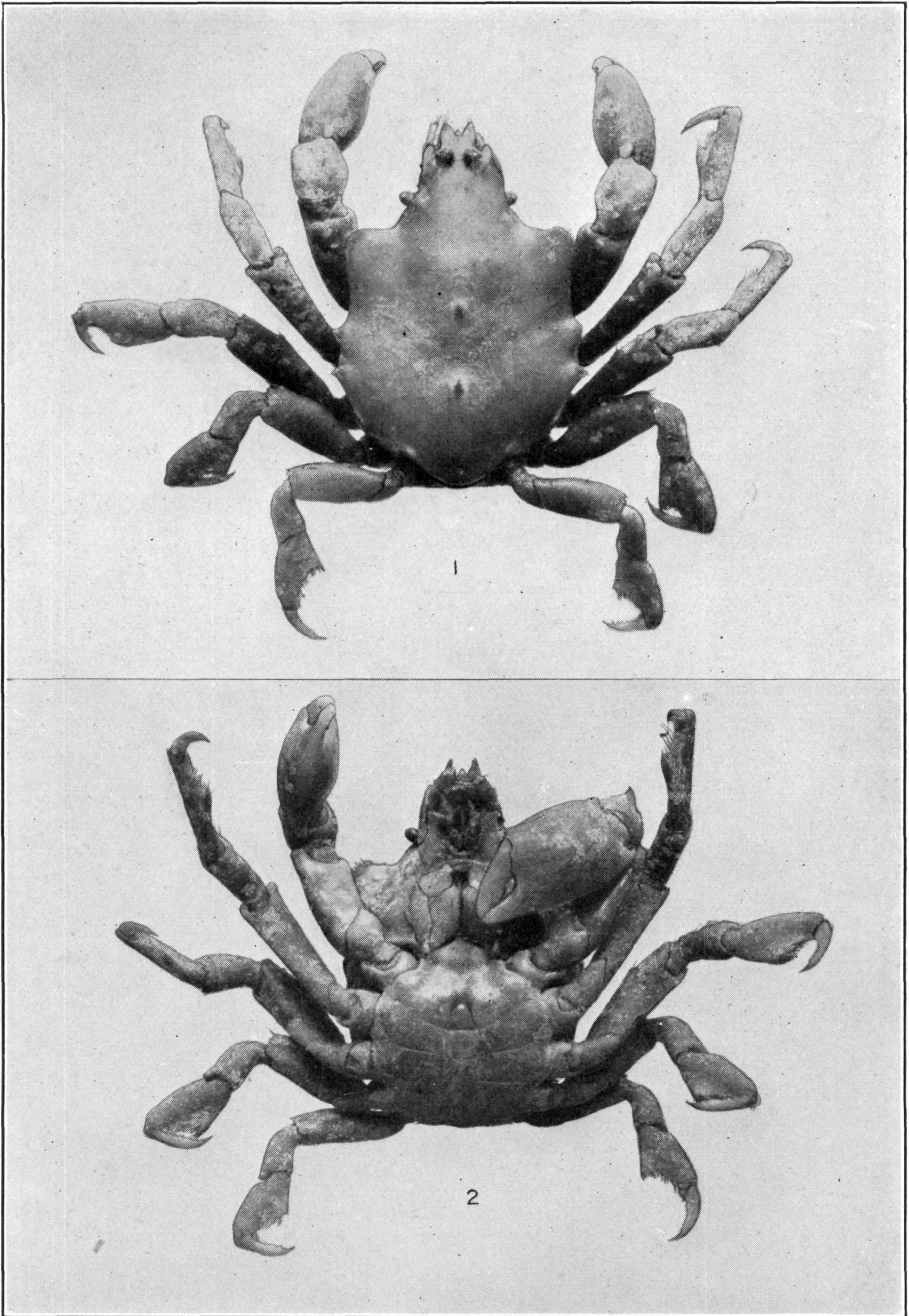
PYROMAIA ARACHNA. (PAGE 131)

FOR EXPLANATION OF PLATE SEE PAGE 569



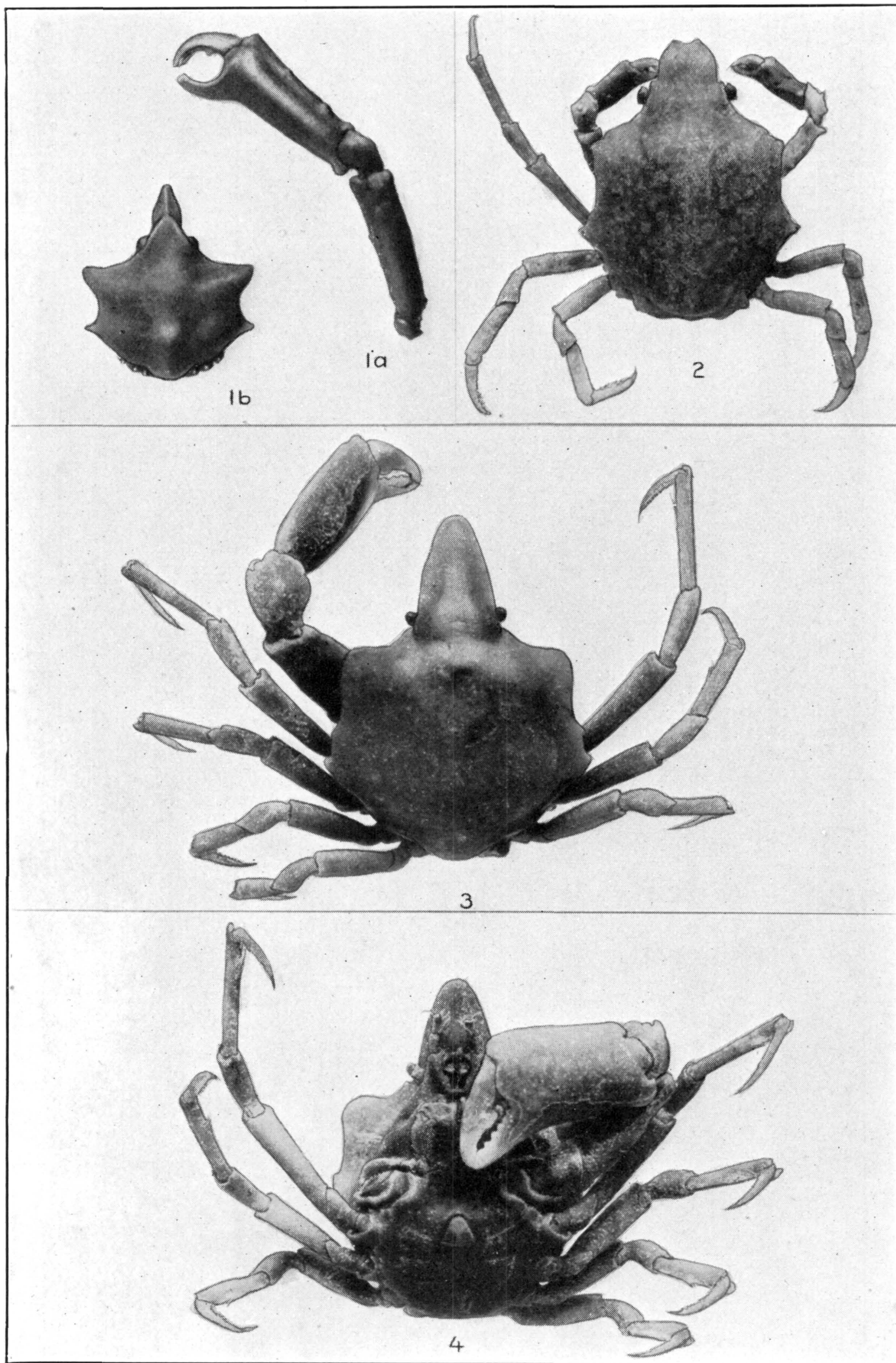
PYROMAIA ARACHNA. (PAGE 131)

FOR EXPLANATION OF PLATE SEE PAGE 569

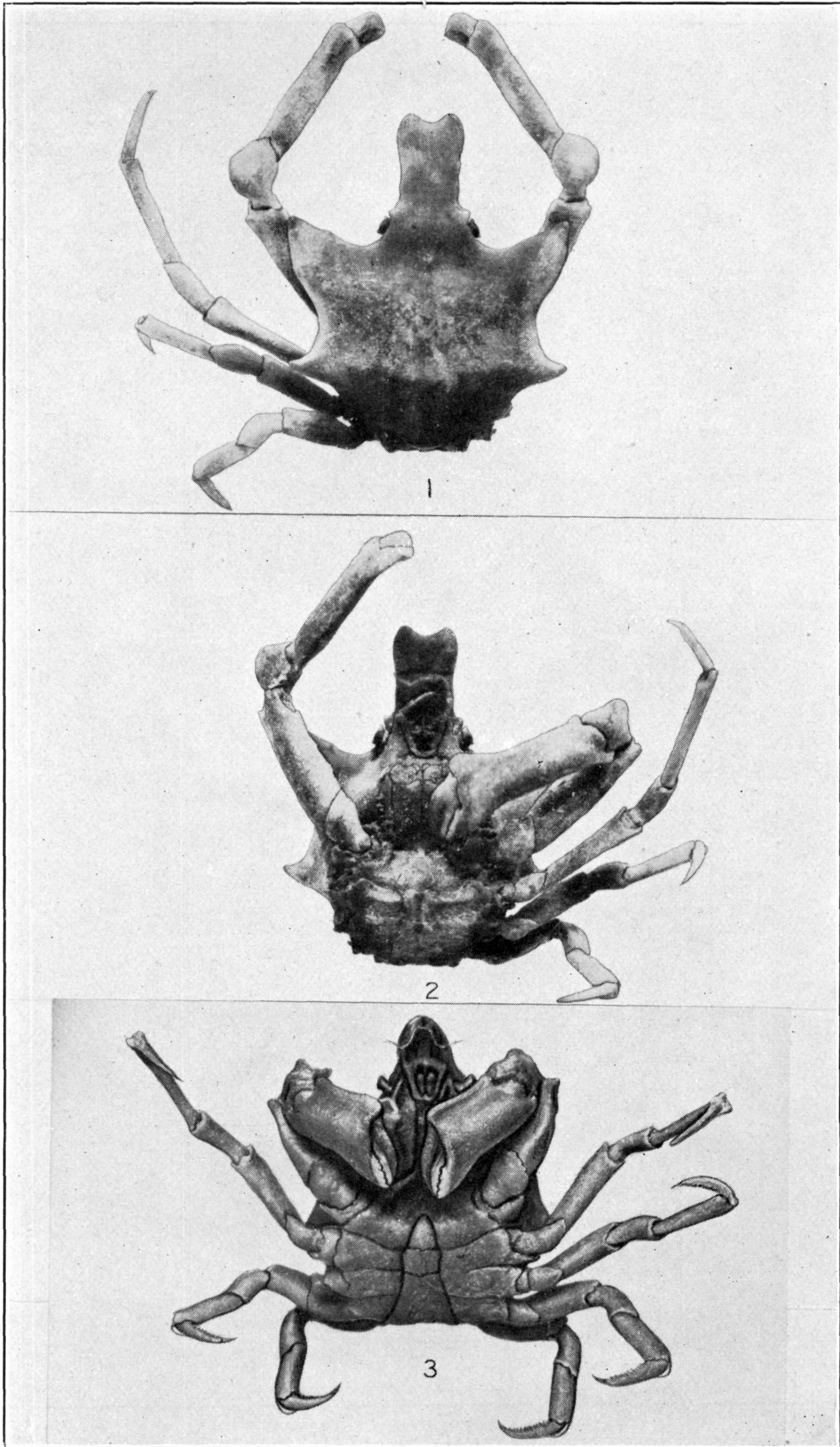


ACANTHONYX PETIVERII. (PAGE 142)

FOR EXPLANATION OF PLATE SEE PAGE 569

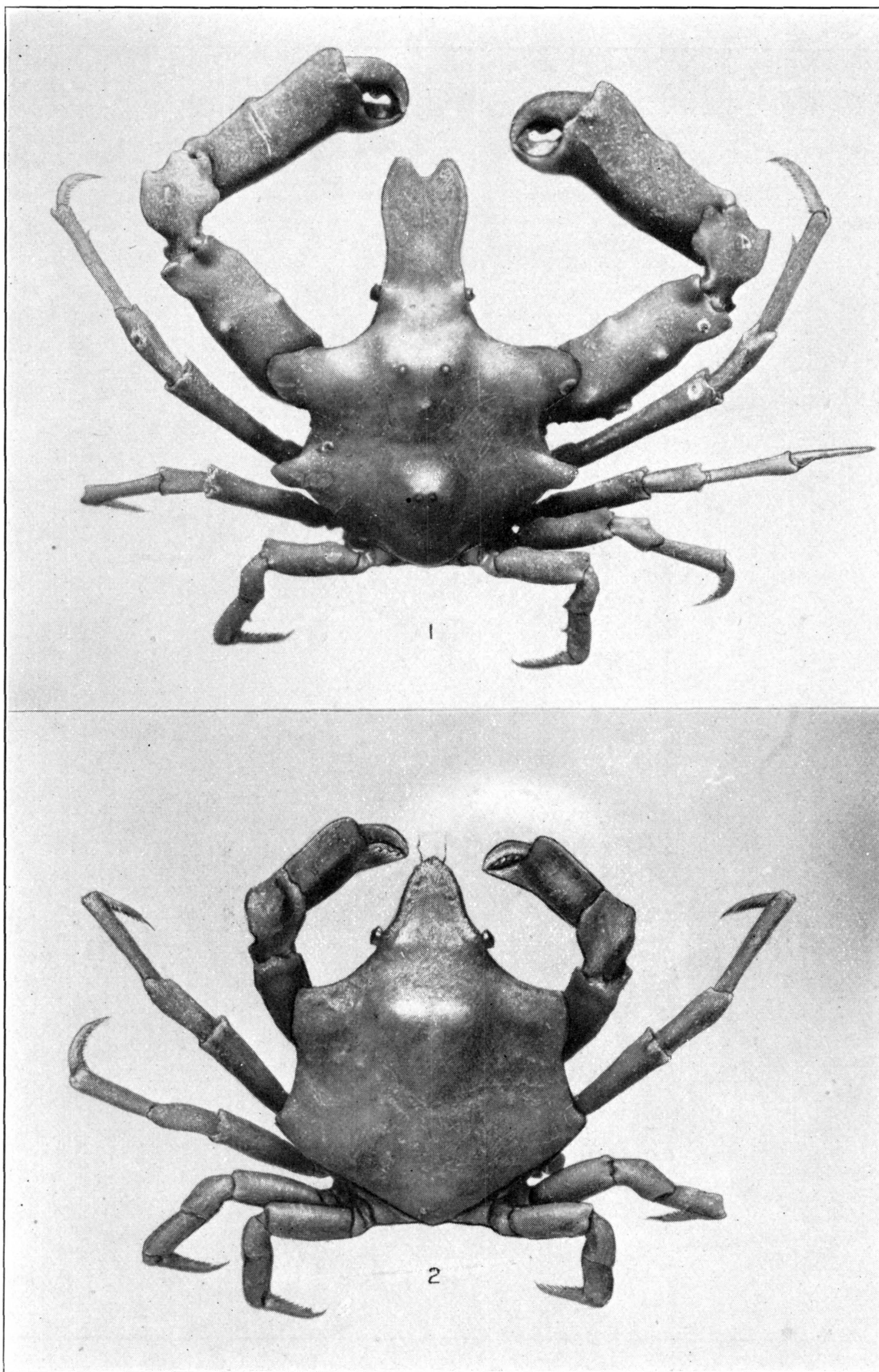


1. *EPIALTUS KINGSLEYI*. (PAGE 152.) 2. *E. DILATATUS*. (PAGE 153.)
3, 4. *E. BITUBERCULATUS*. (PAGE 148)



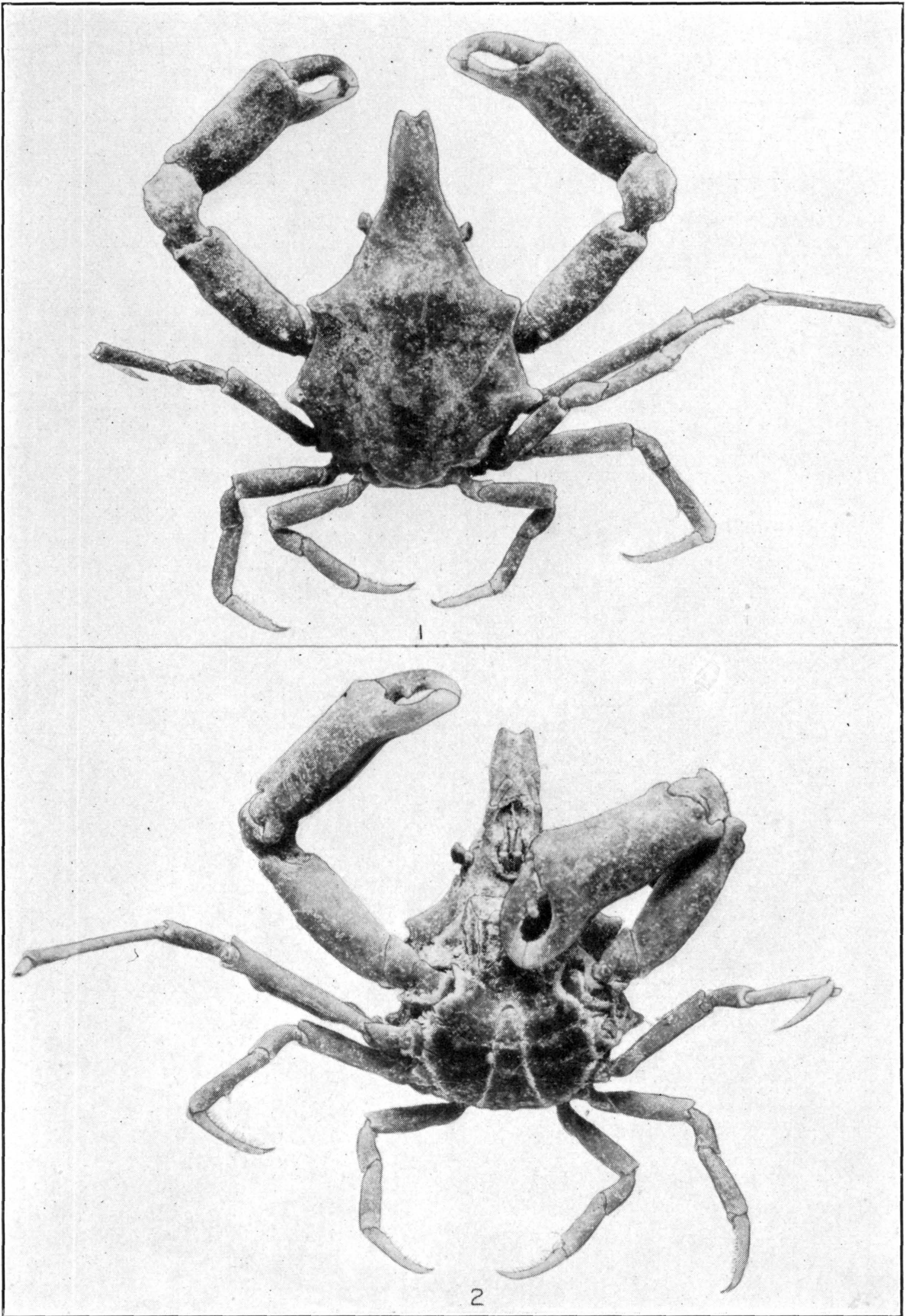
1, 2. *EPIPLATUS HILTONI*. (PAGE 156.) 3. *E. SULCIROSTRIS*. (PAGE 150)

FOR EXPLANATION OF PLATE SEE PAGE 570



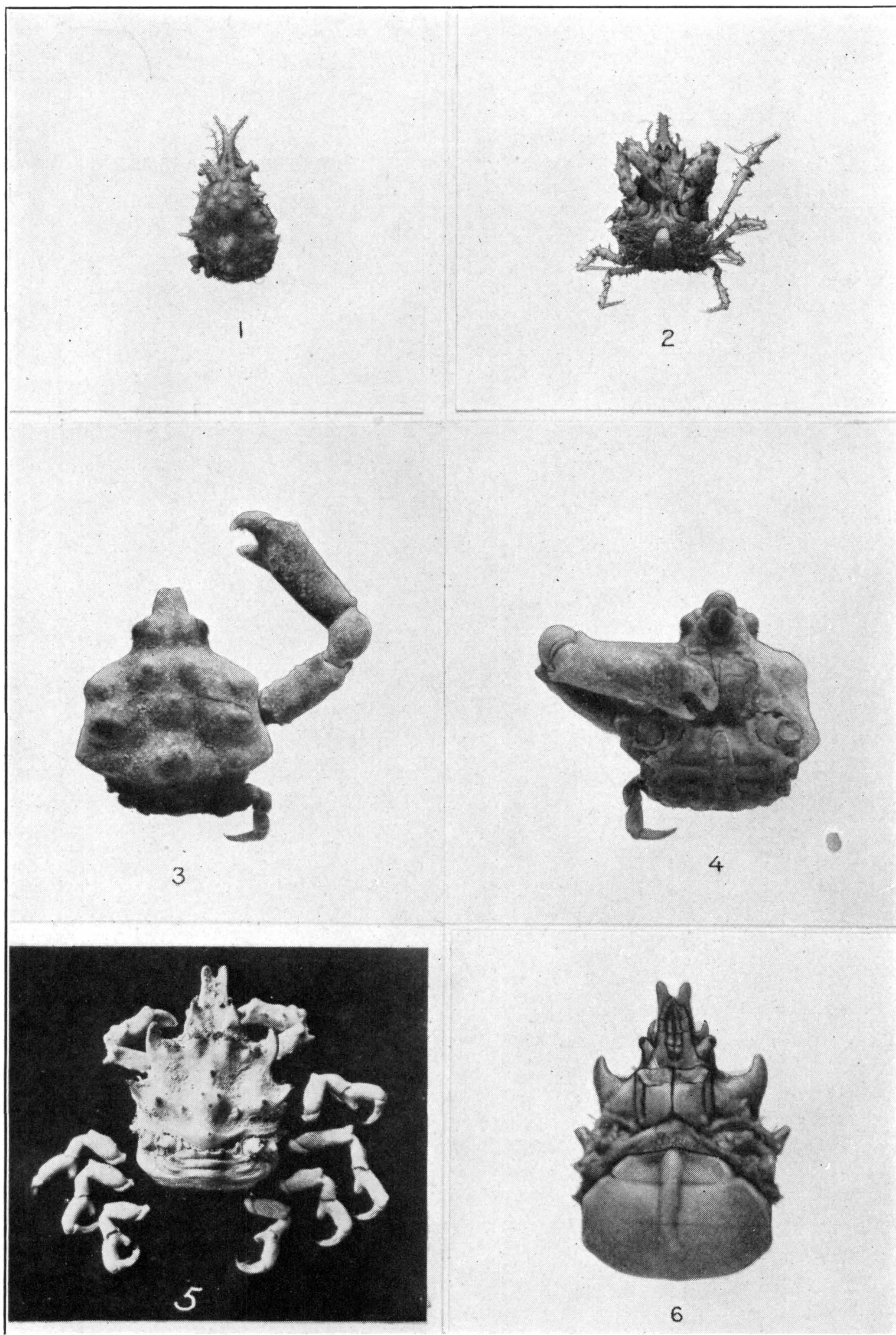
1. *EPIALTUS MINIMUS*. (PAGE 155.) 2. *E. SULCIROSTRIS*. (PAGE 150)

FOR EXPLANATION OF PLATE SEE PAGE 570



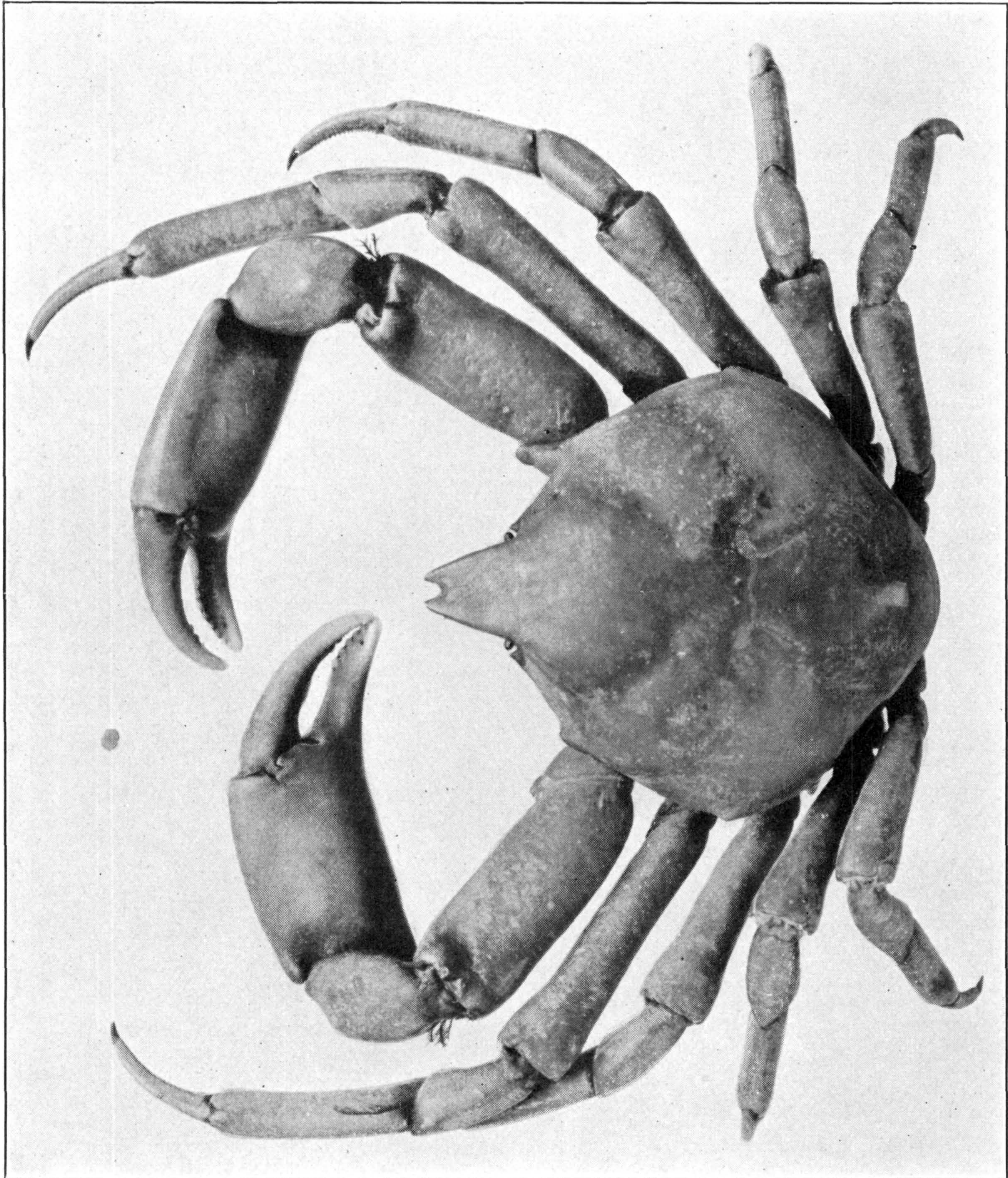
EPIALTUS DILATATUS FORMA *ELONGATA*. (PAGE 154)

FOR EXPLANATION OF PLATE SEE PAGE 570



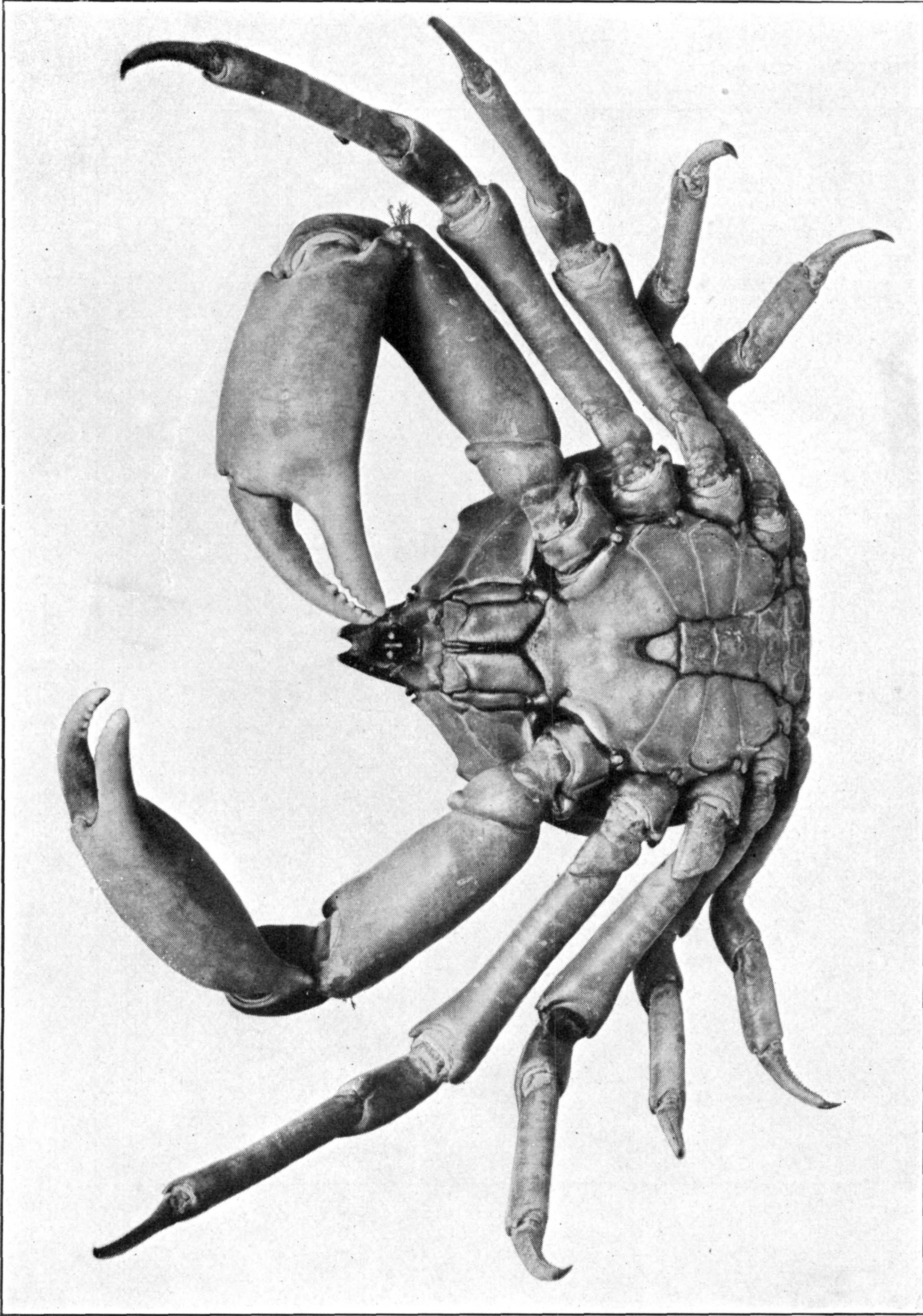
1, 2. *MENAETHIOPS PORTORICENSIS*. (PAGE 190.) 3, 4. *MOCOSOA CREBRIPUNCTATA*. (PAGE 159.) 5, 6. *EUPLEURODON PERUVIANUS*. (PAGE 161)

FOR EXPLANATION OF PLATE SEE PAGE 573



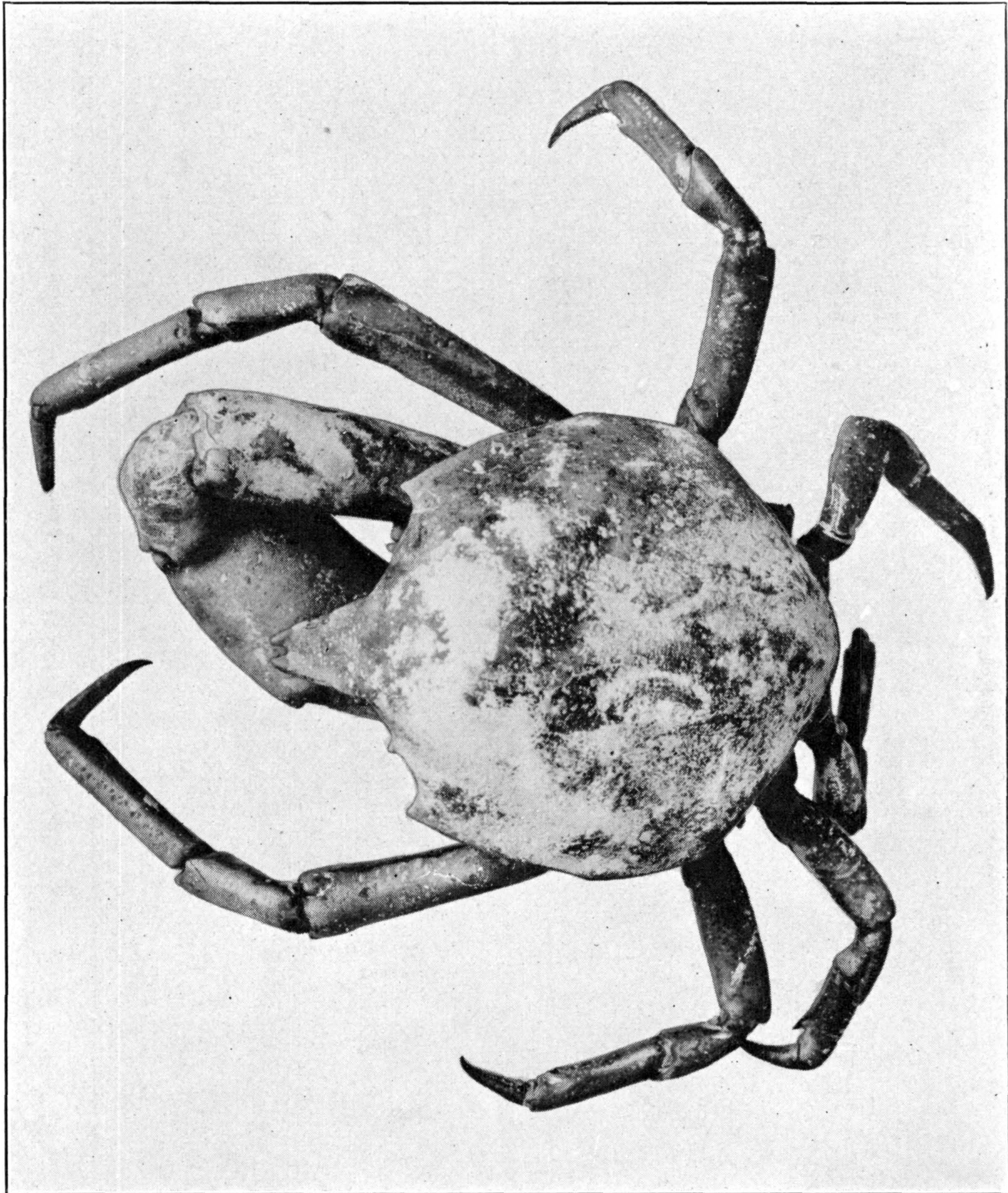
TALIEPUS NUTTALLII. (PAGE 162)

FOR EXPLANATION OF PLATE SEE PAGE 570



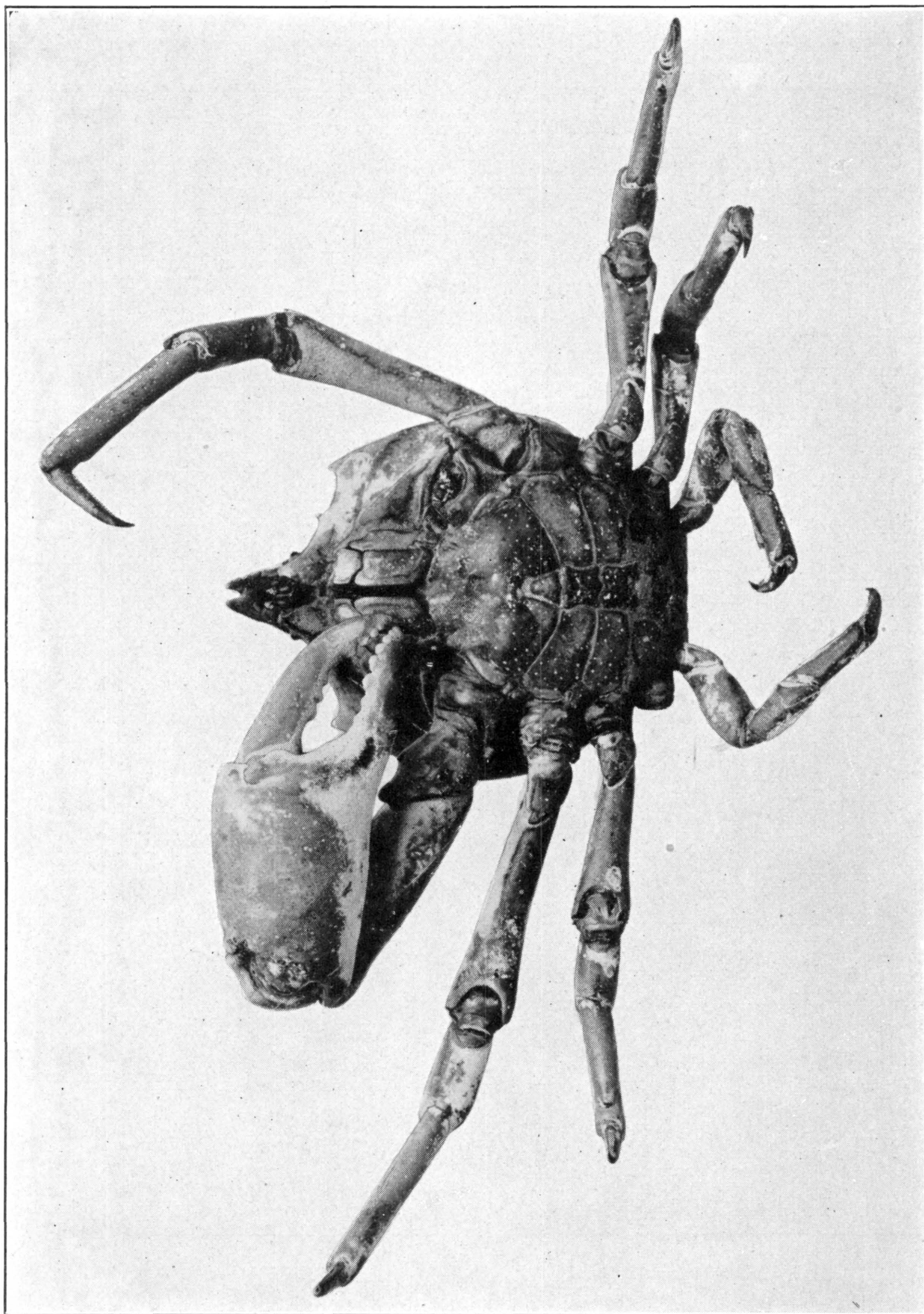
TALIEPUS NUTTALLII. (PAGE 162)

FOR EXPLANATION OF PLATE SEE PAGE 570



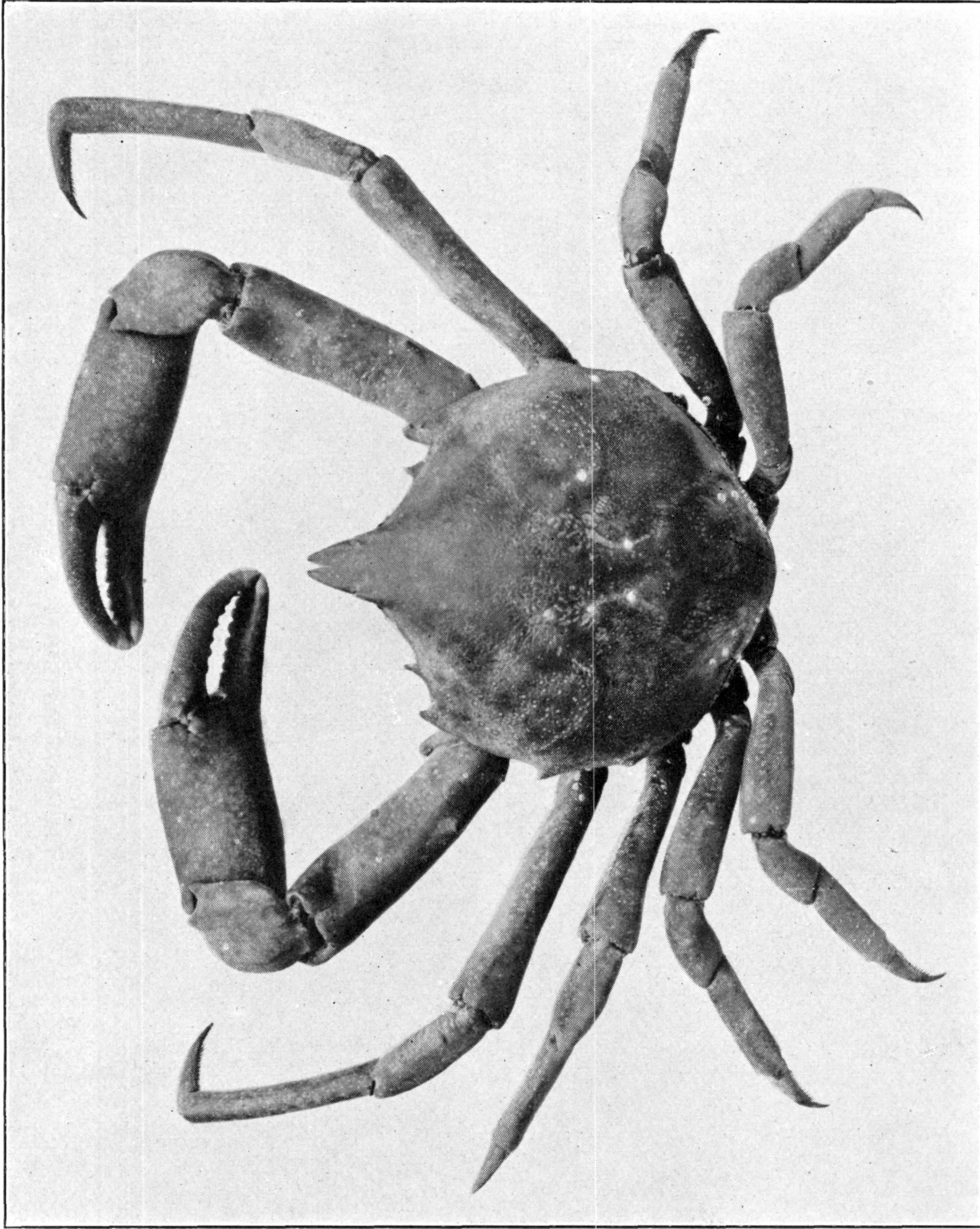
TALIEPUS MARGINATUS. (PAGE 164)

FOR EXPLANATION OF PLATE SEE PAGE 570



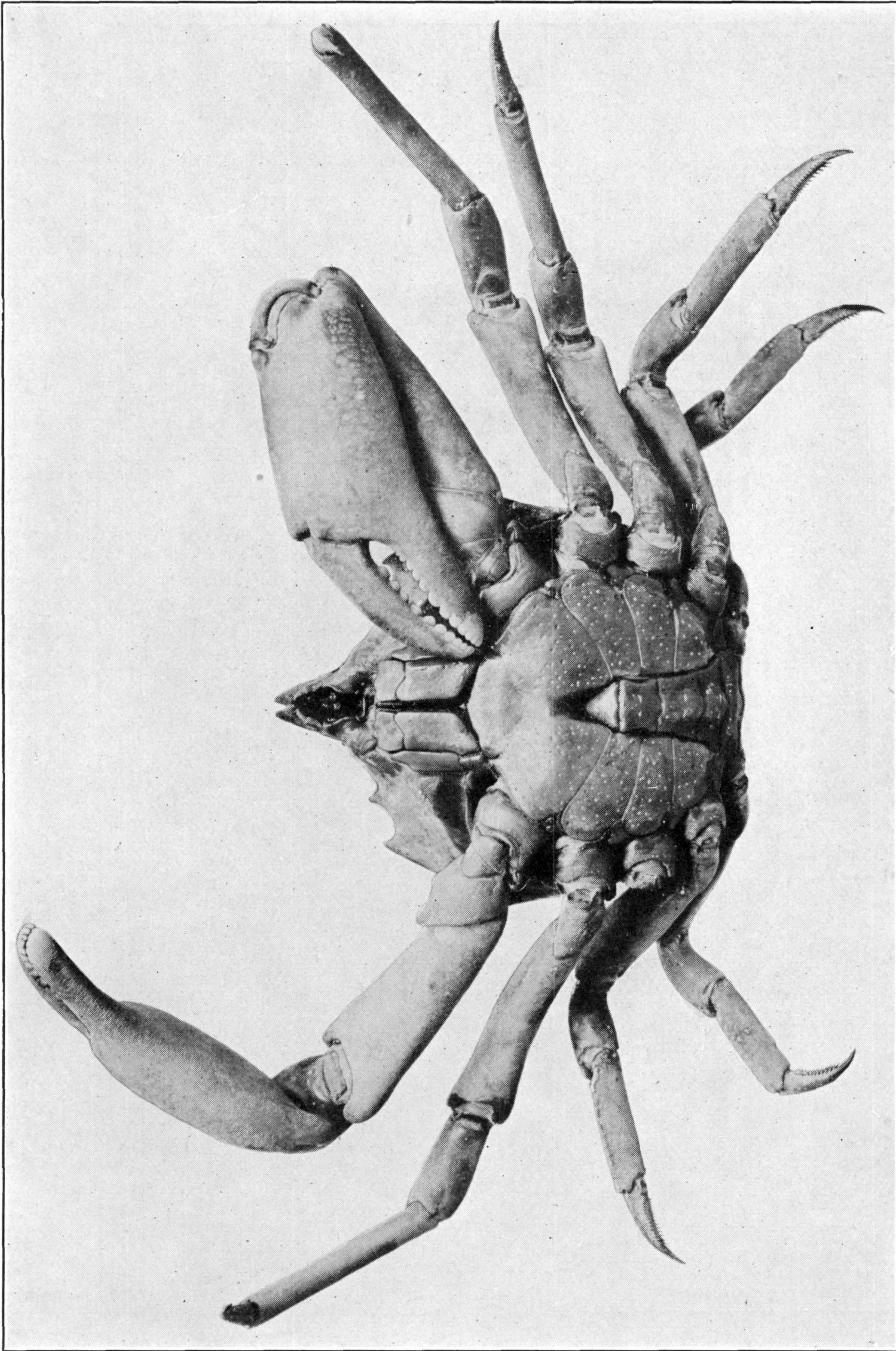
TALIEPUS MARGINATUS. (PAGE 164)

FOR EXPLANATION OF PLATE SEE PAGE 570



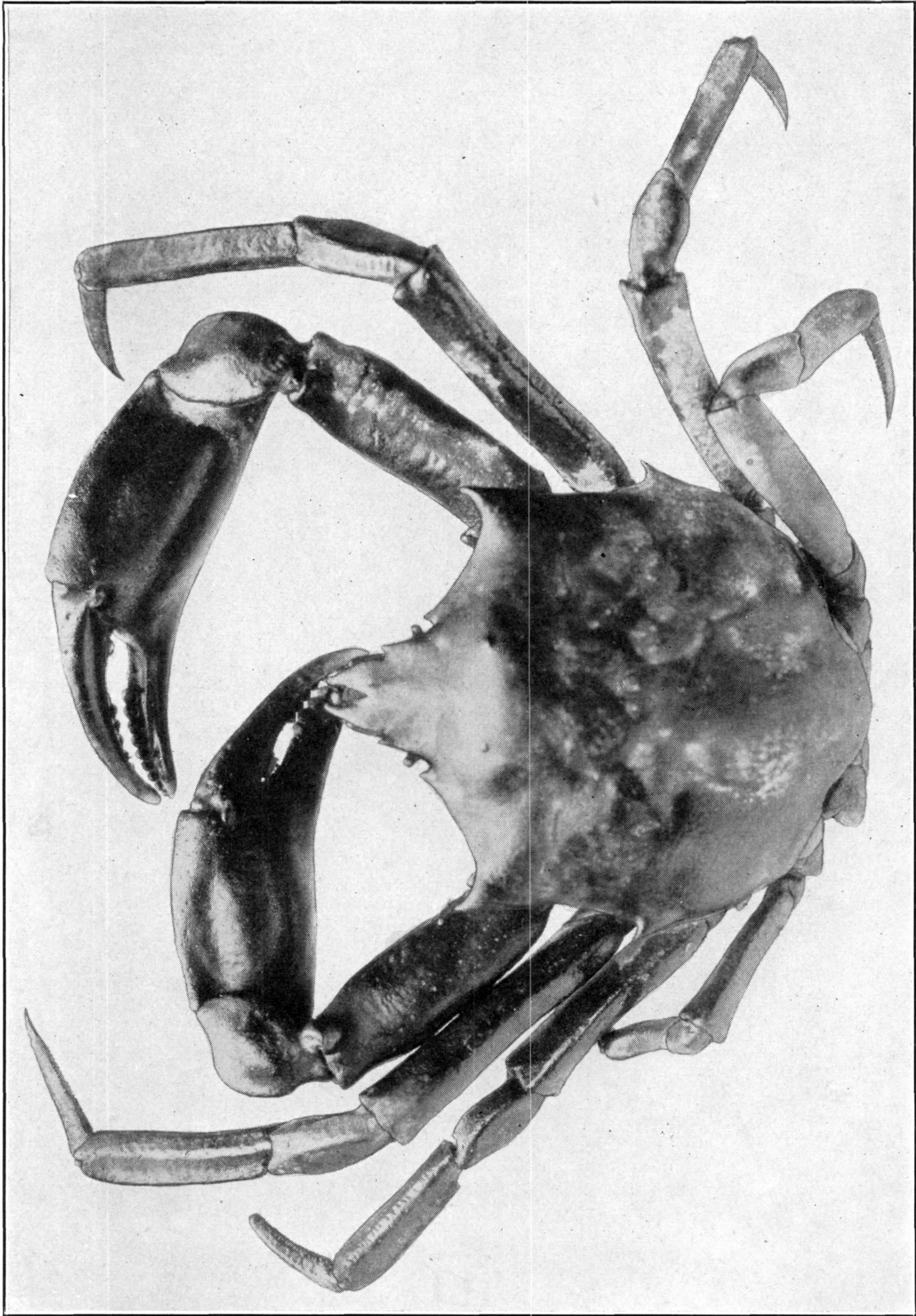
TALIEPUS DENTATUS. (PAGE 165)

FOR EXPLANATION OF PLATE SEE PAGE 570



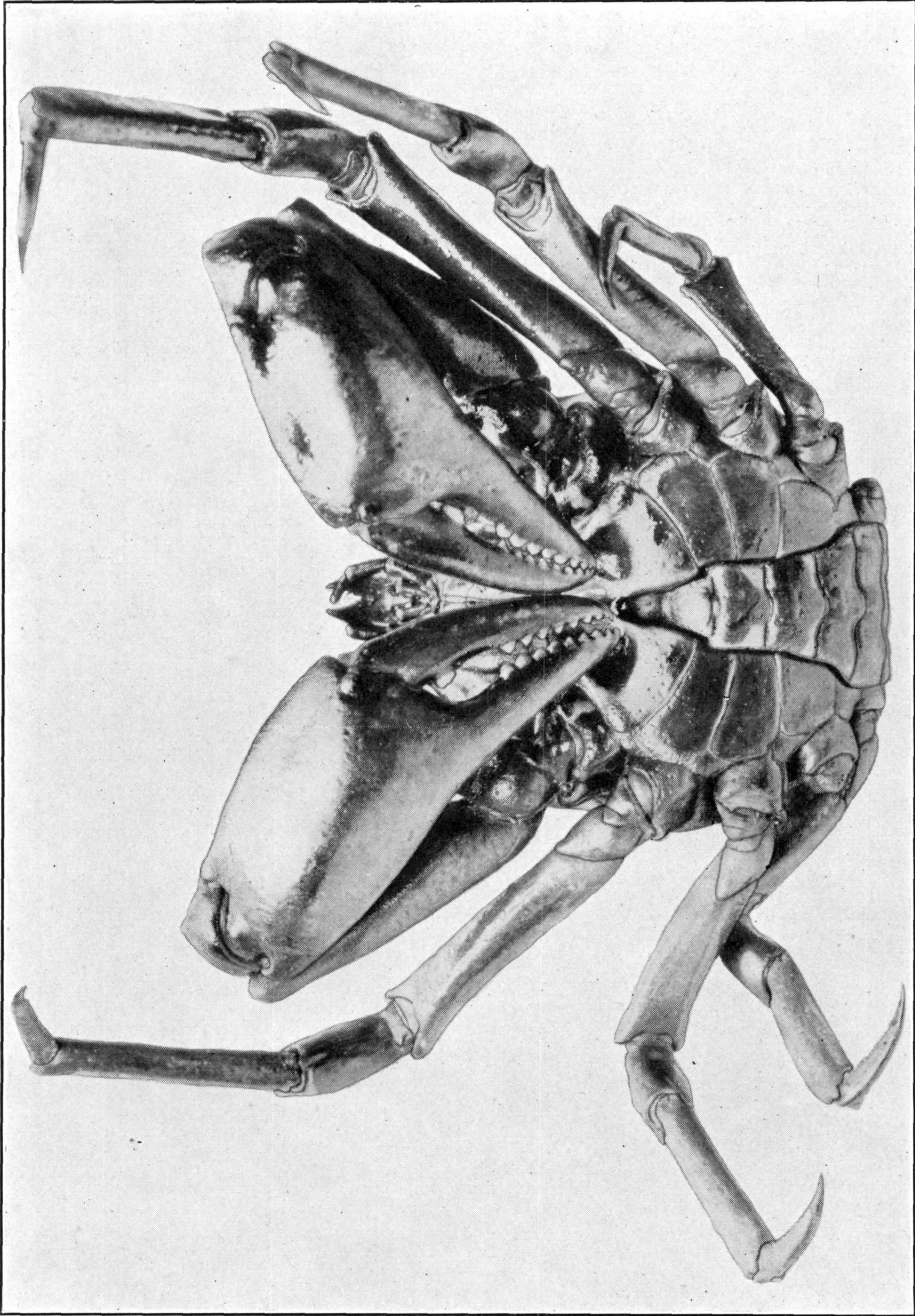
TALIEPUS DENTATUS. (PAGE 165)

FOR EXPLANATION OF PLATE SEE PAGE 570



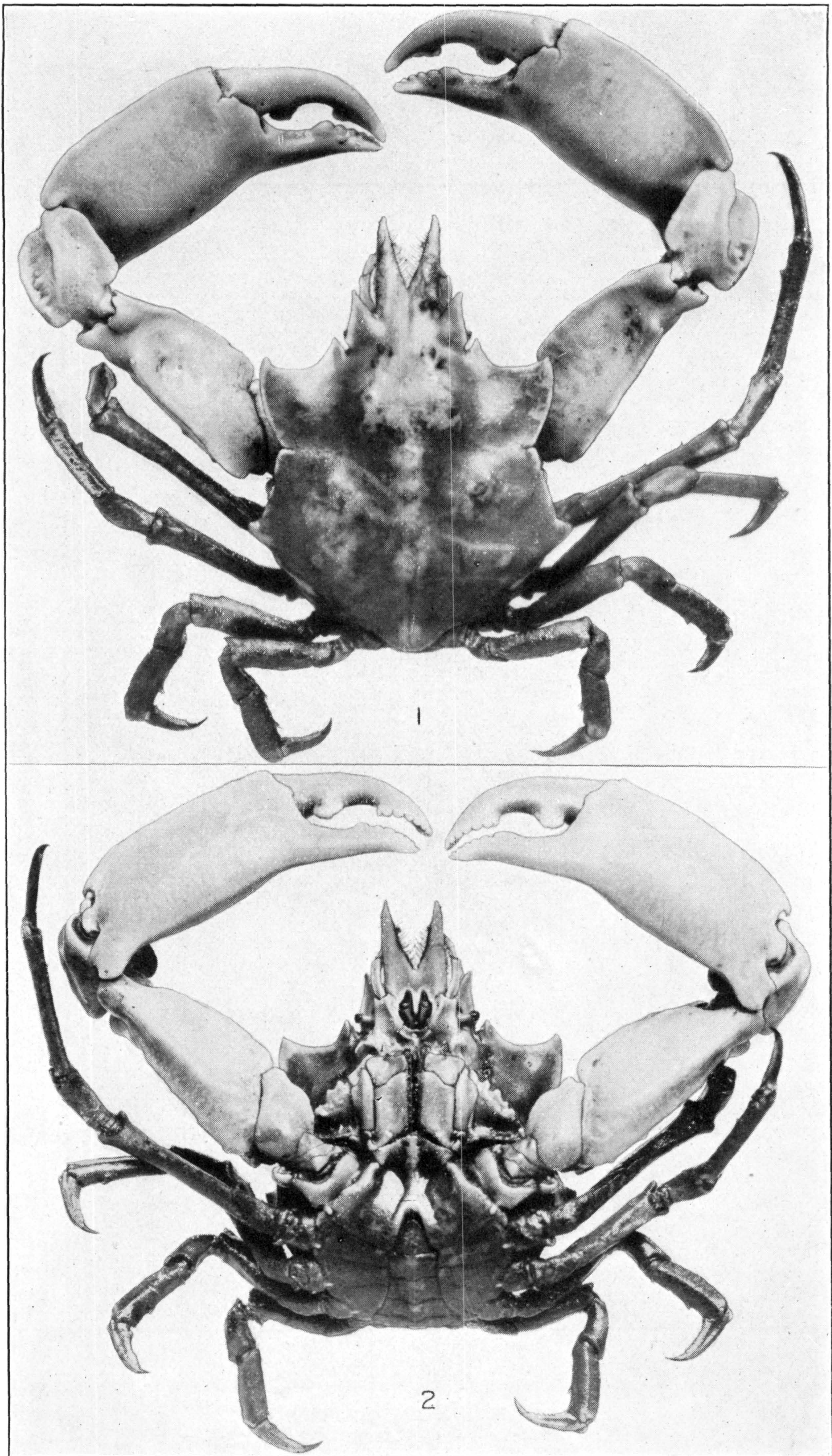
PUGETTIA PRODUCTA. (PAGE 167)

FOR EXPLANATION OF PLATE SEE PAGE 570



PUGETTIA PRODUCTA. (PAGE 167)

FOR EXPLANATION OF PLATE SEE PAGE 571



PUGETTIA GRACILIS. (PAGE 172)

FOR EXPLANATION OF PLATE SEE PAGE 571