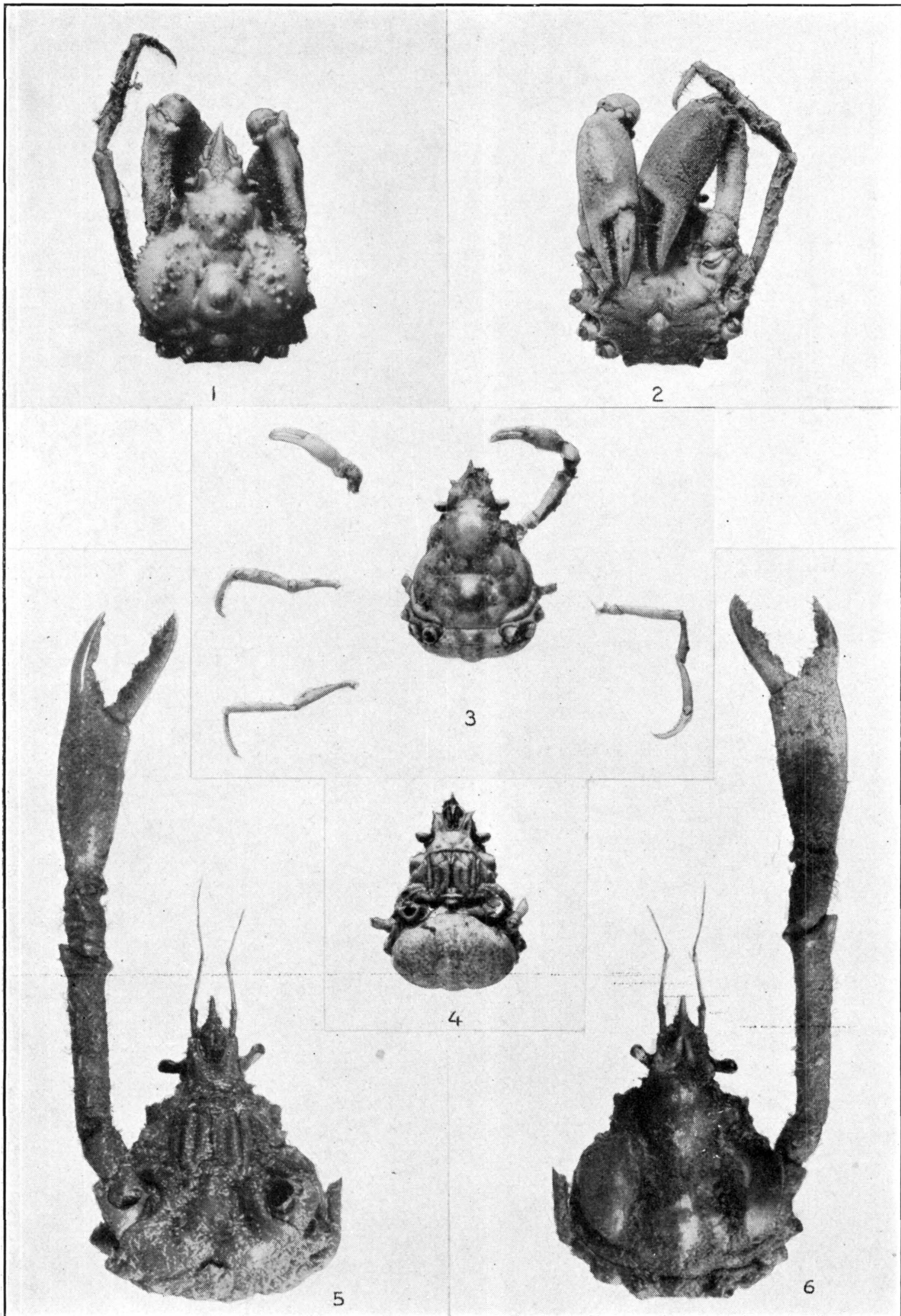


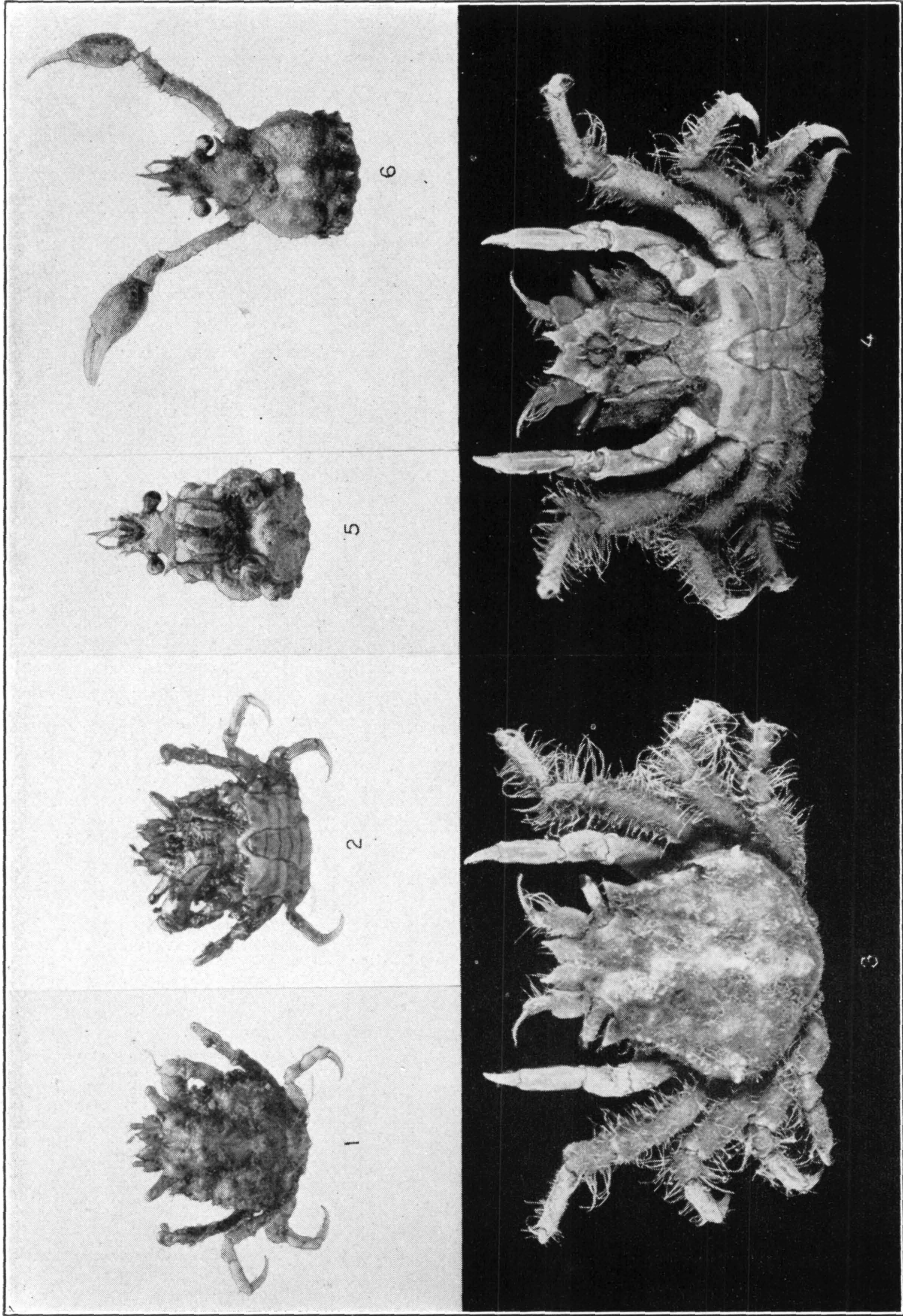
PODOCHELA LATIMANUS. (PAGE 56)

FOR EXPLANATION OF PLATE SEE PAGE 567



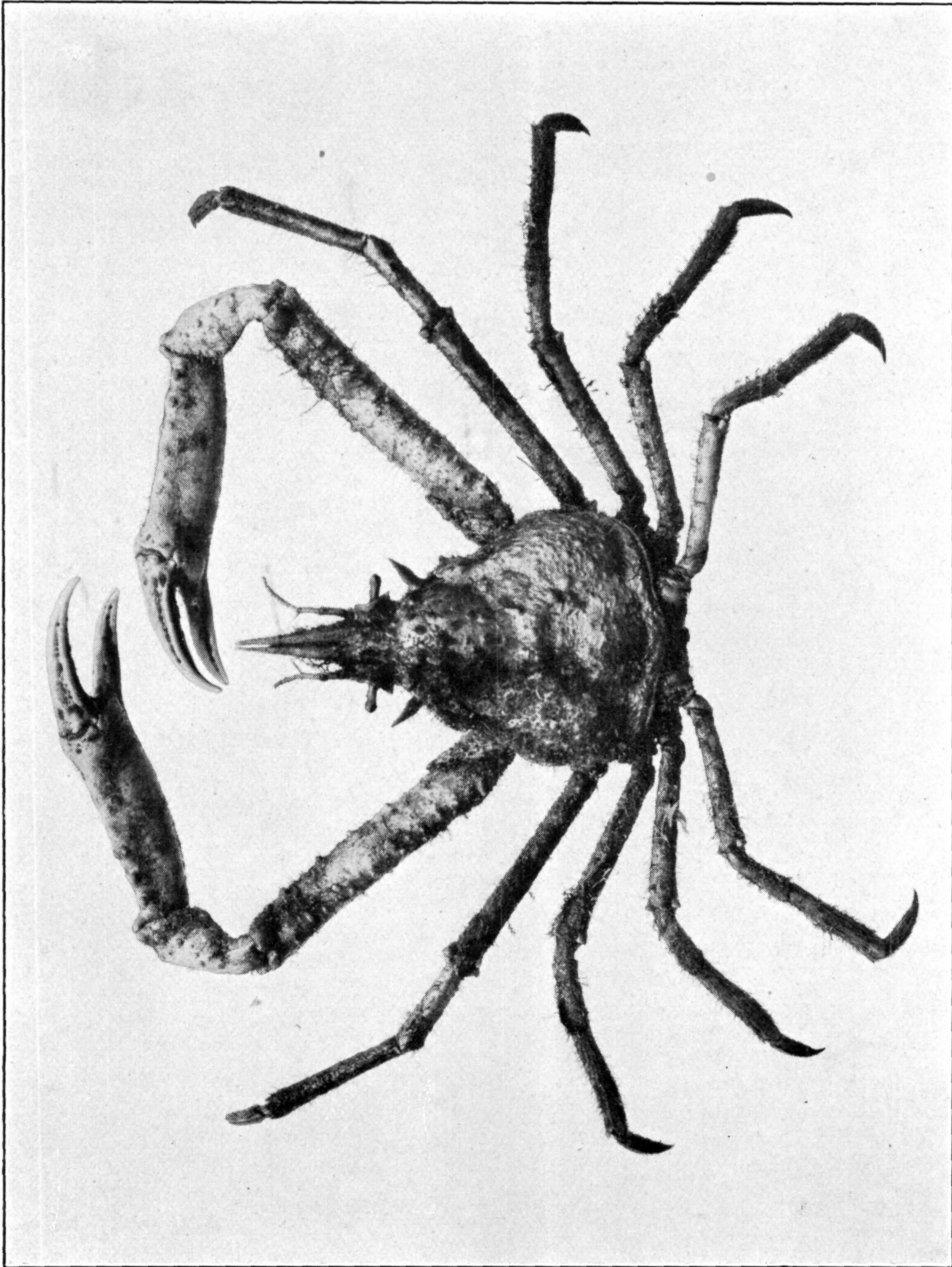
1, 2. *INACHOIDES MICRORHYNCHUS*. (PAGE 60.) 3-6. *I. LAEVIS*. (PAGE 61)

FOR EXPLANATION OF PLATE SEE PAGE 567



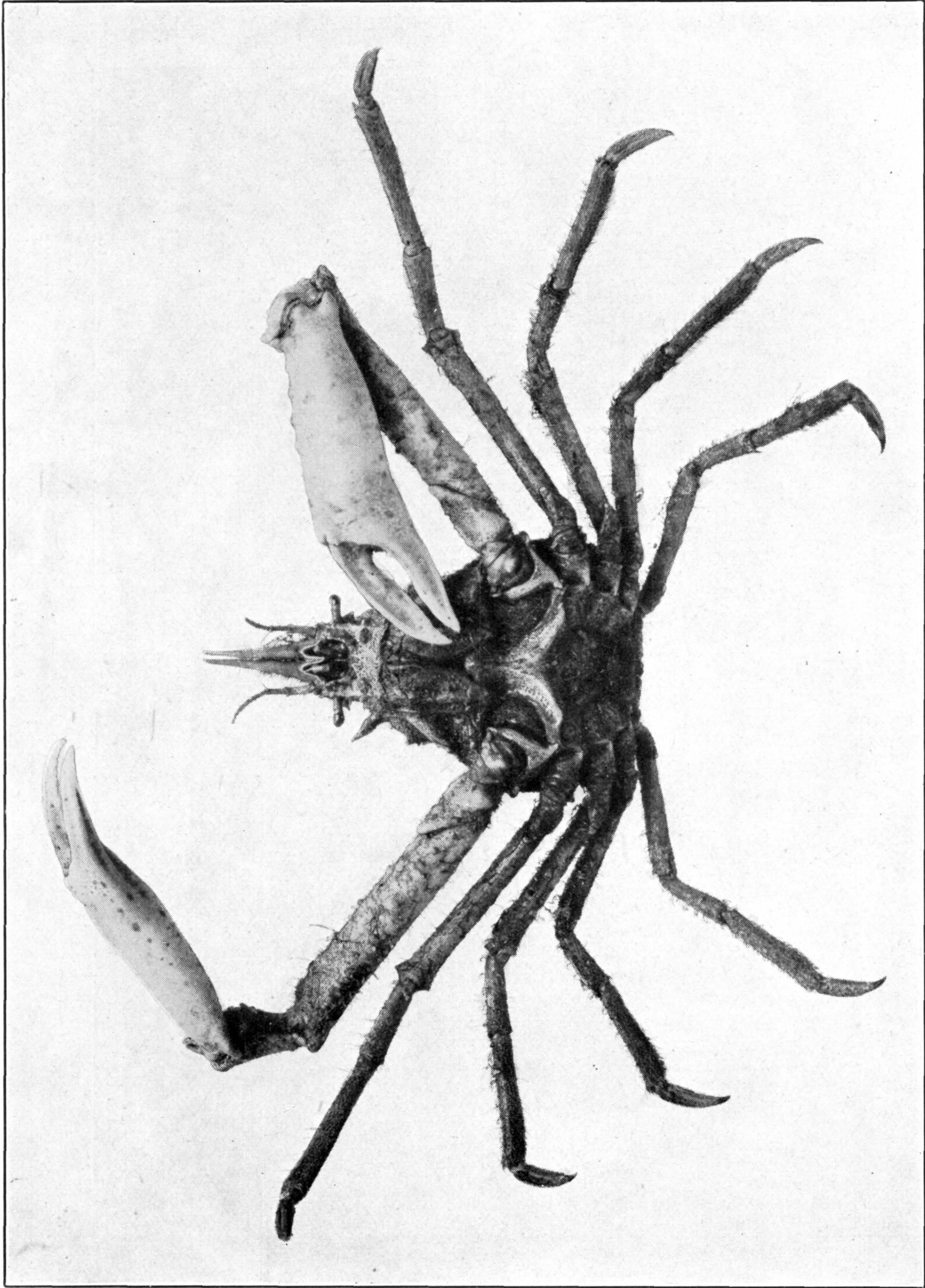
1, 2. EUCINETOPS BLAKIANA. (PAGE 88.) 3, 4. E. PANAMENSIS. (PAGE 87.) 5, 6. ANASIMUS FUGAX. (PAGE 64)

FOR EXPLANATION OF PLATE SEE PAGE 567



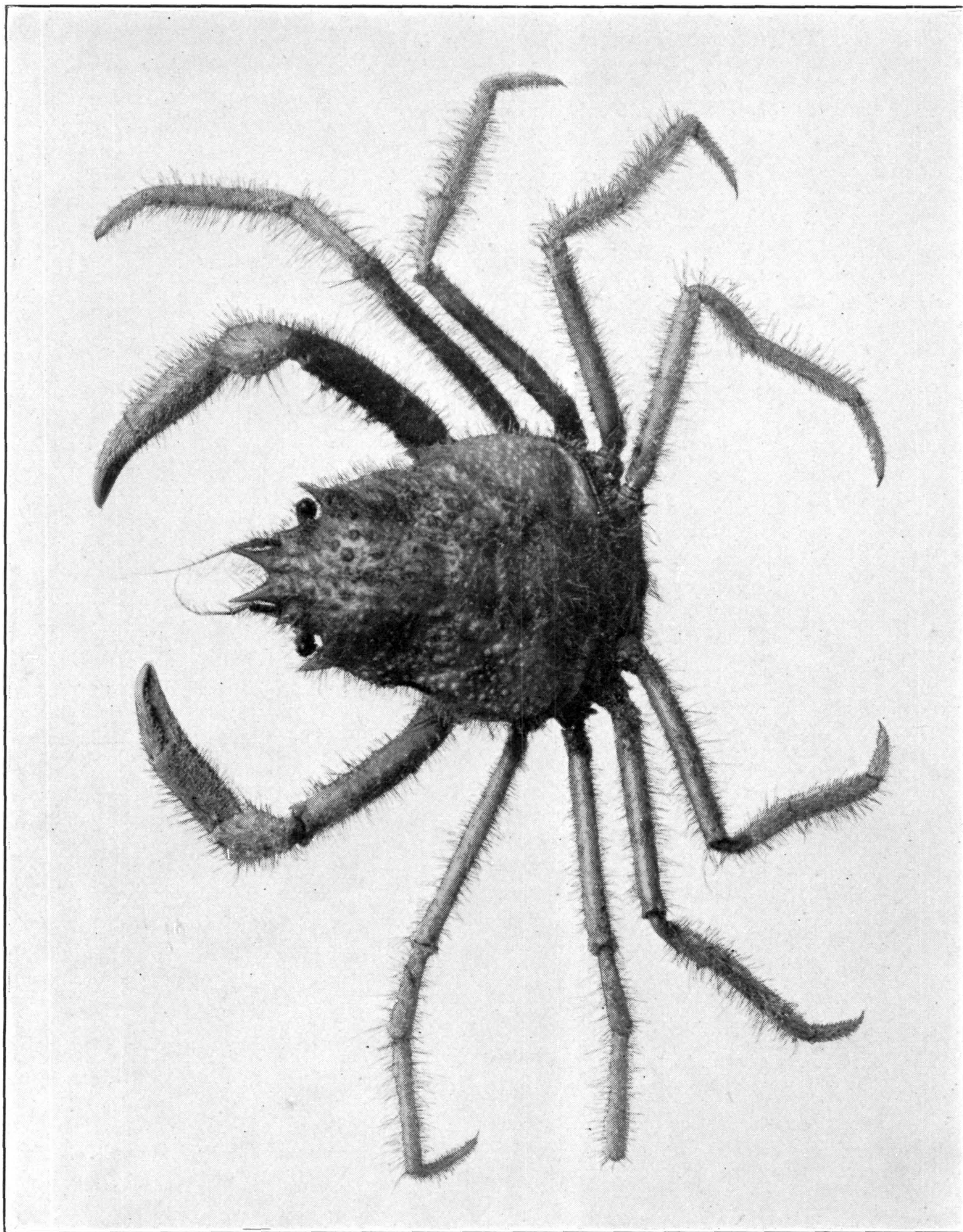
OREGONIA GRACILIS. (PAGE 71)

FOR EXPLANATION OF PLATE SEE PAGE 567



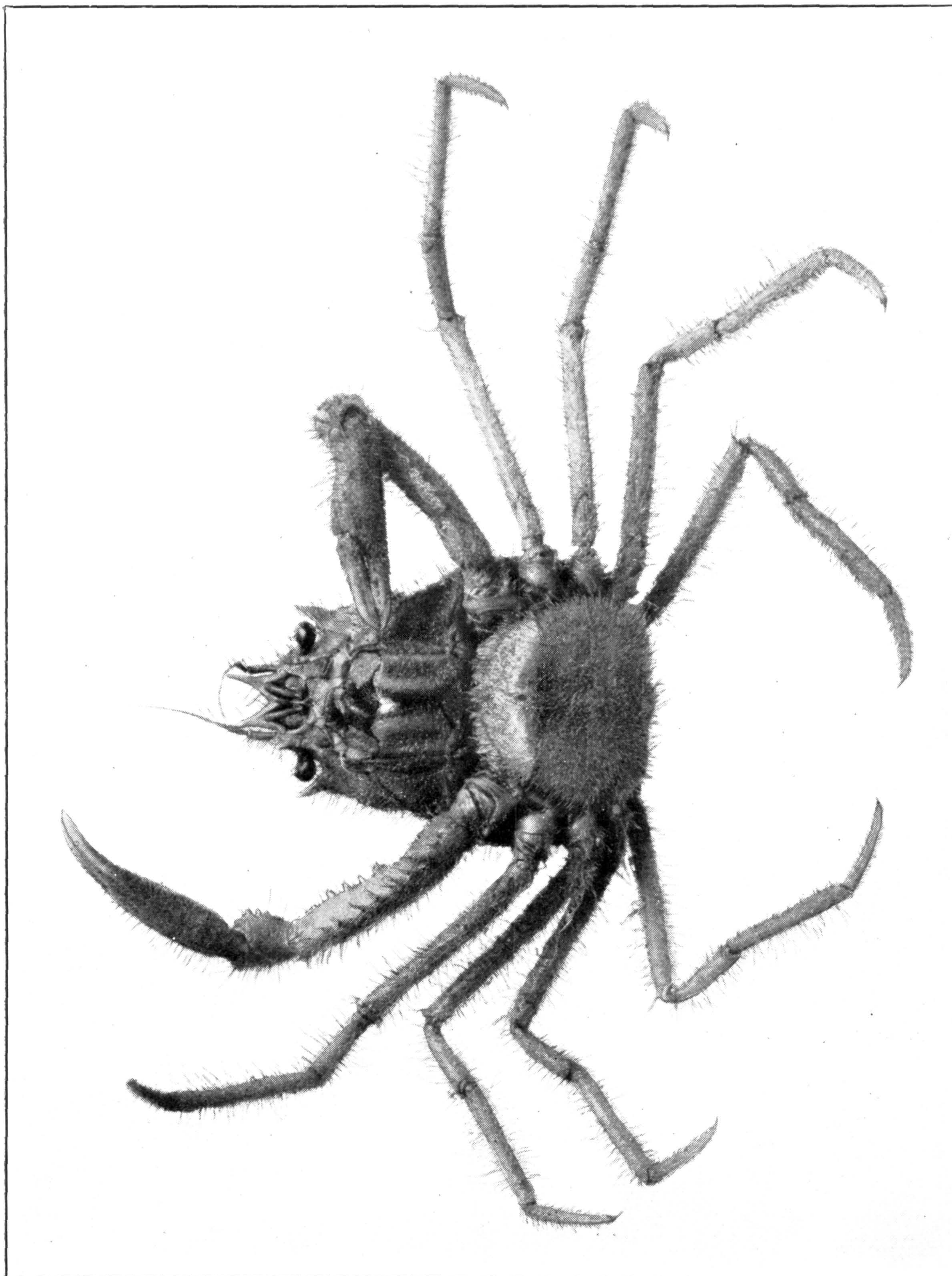
OREGONIA GRACILIS. (PAGE 71)

FOR EXPLANATION OF PLATE SEE PAGE 567



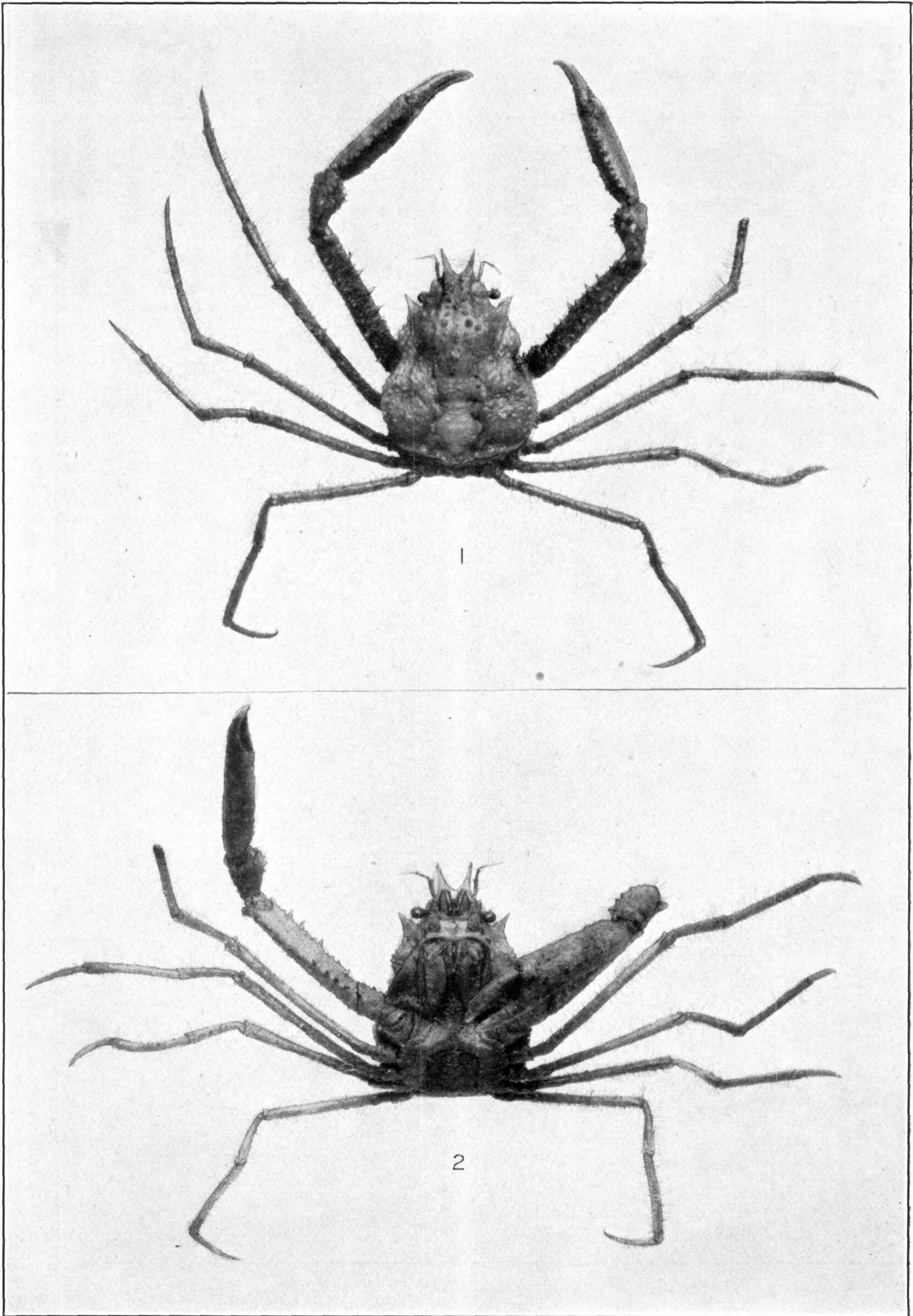
OREGONIA BIFURCA. (PAGE 79)

FOR EXPLANATION OF PLATE SEE PAGE 567



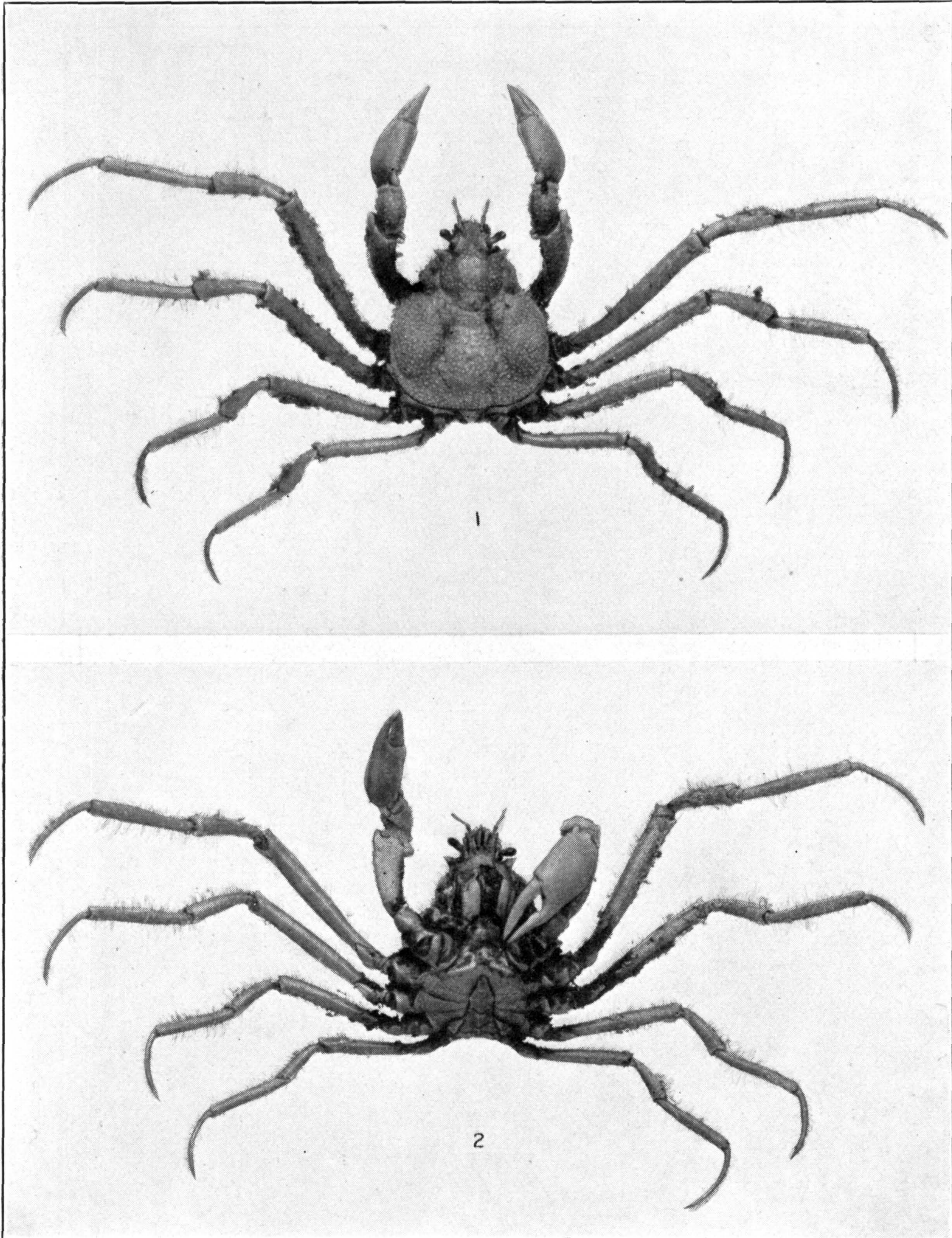
OREGONIA BIFURCA. (PAGE 79)

FOR EXPLANATION OF PLATE SEE PAGE 567



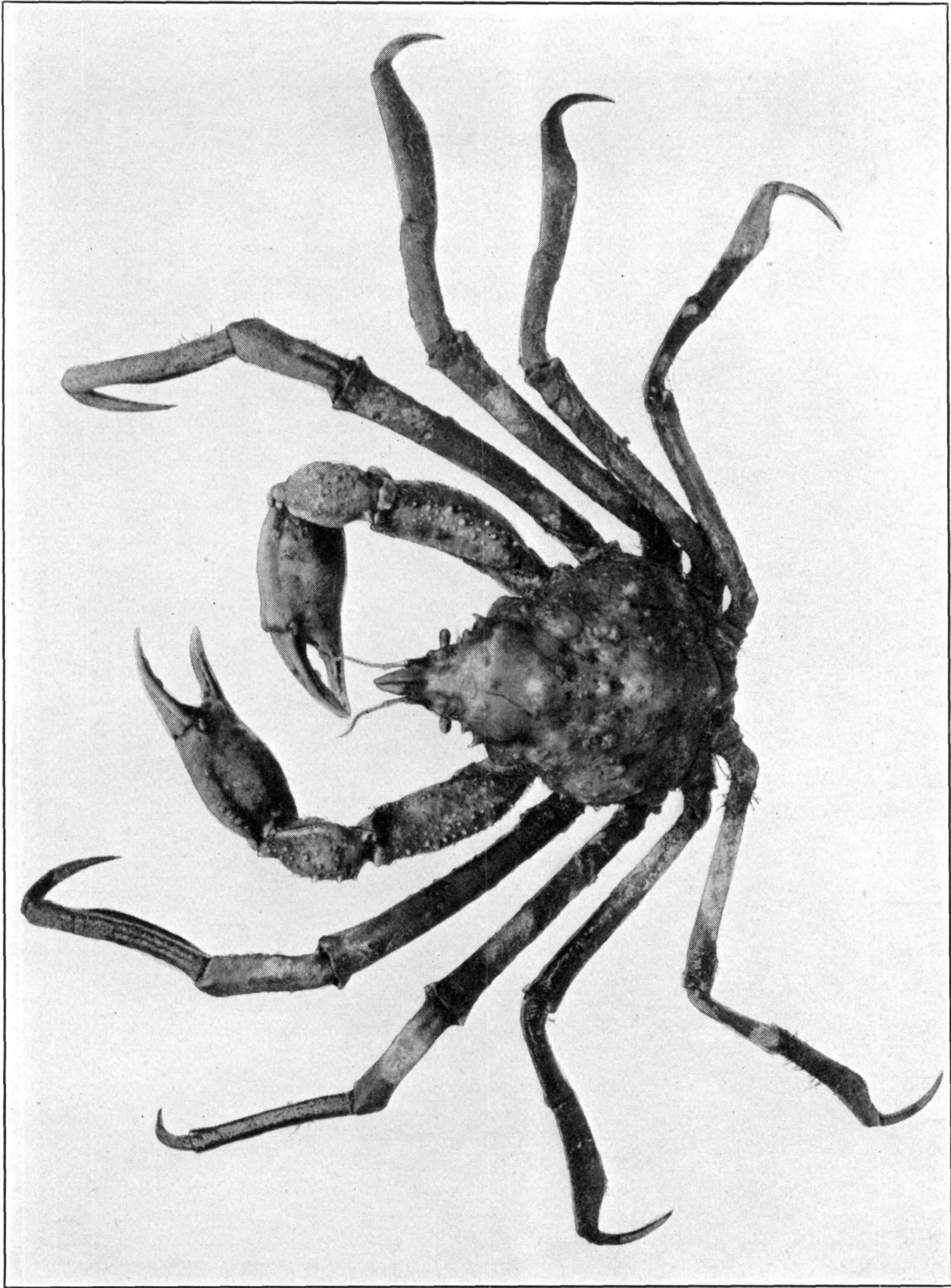
OREGONIA BIFURCA. (PAGE 79)

FOR EXPLANATION OF PLATE SEE PAGE 567



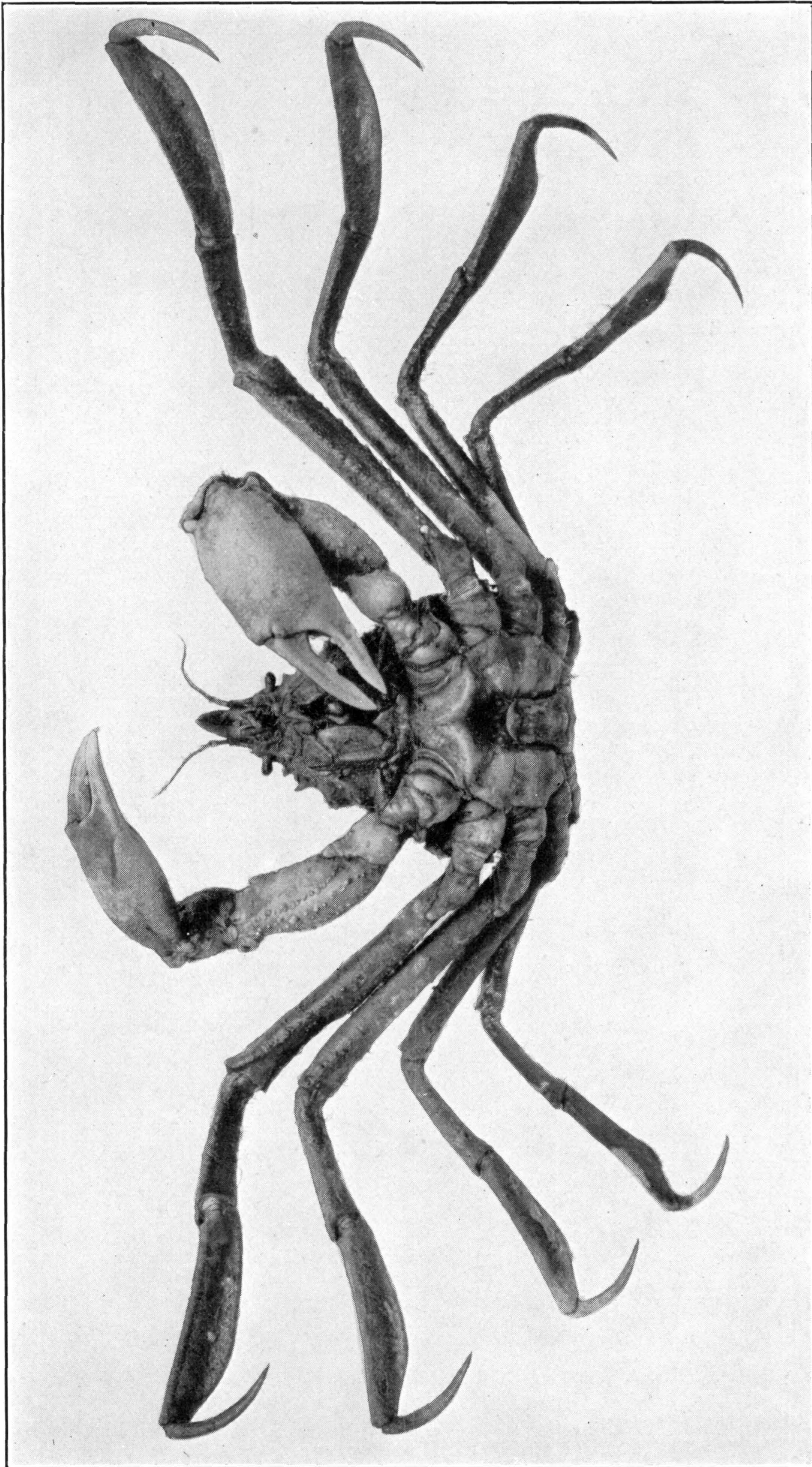
COLLODES ROBUSTUS. (PAGE 114)

FOR EXPLANATION OF PLATE SEE PAGE 567



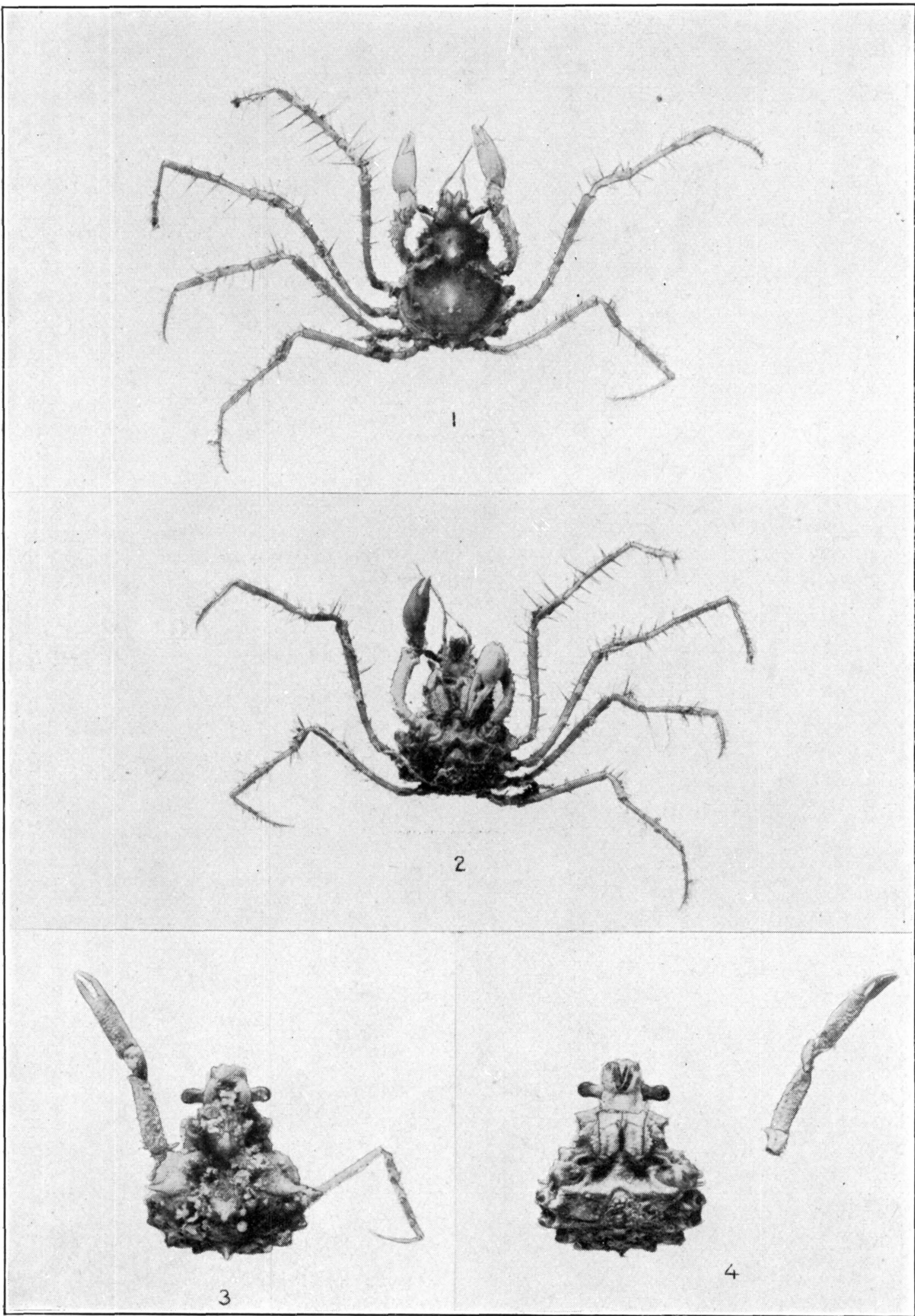
EURYPODIUS LATREILLI. (PAGE 80)

FOR EXPLANATION OF PLATE SEE PAGE 567



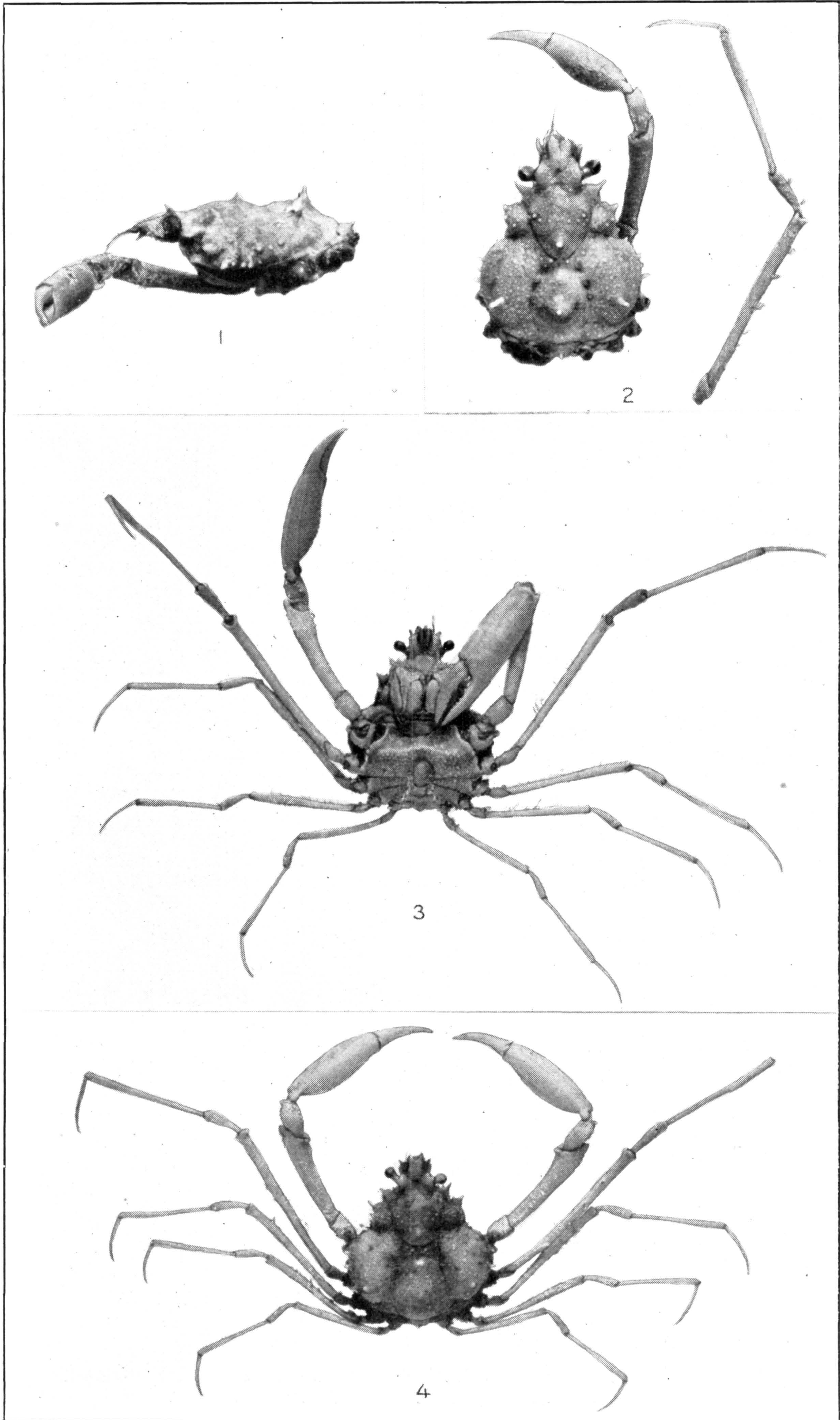
EURYPODIUS LATREILLII. (PAGE 80)

FOR EXPLANATION OF PLATE SEE PAGE 568



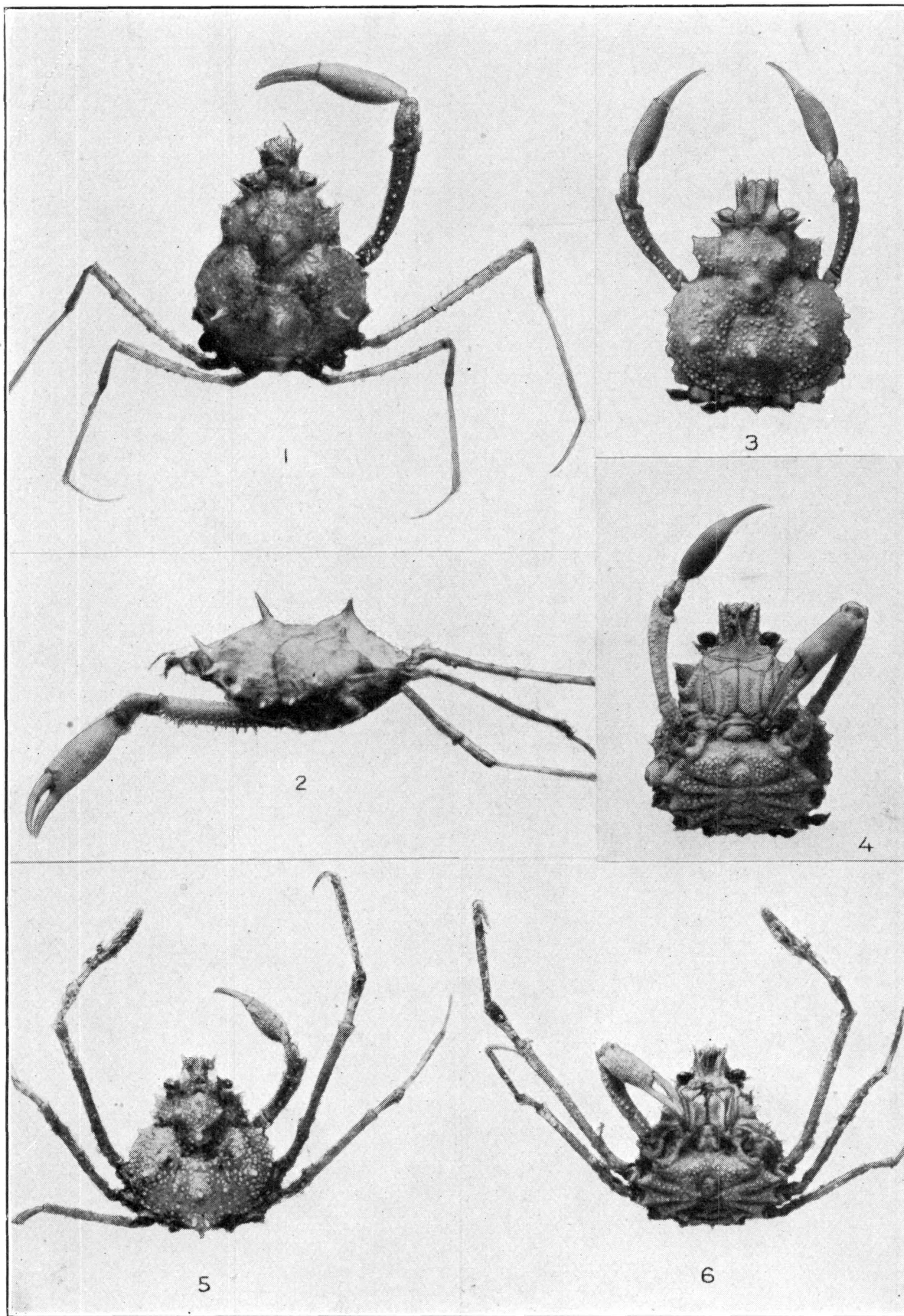
1, 2. ARACHNOPSIS FILIPES. (PAGE 89.) 3, 4. AEPINUS SEPTEMSPINOSUS.
(PAGE 92)

FOR EXPLANATION OF PLATE SEE PAGE 568



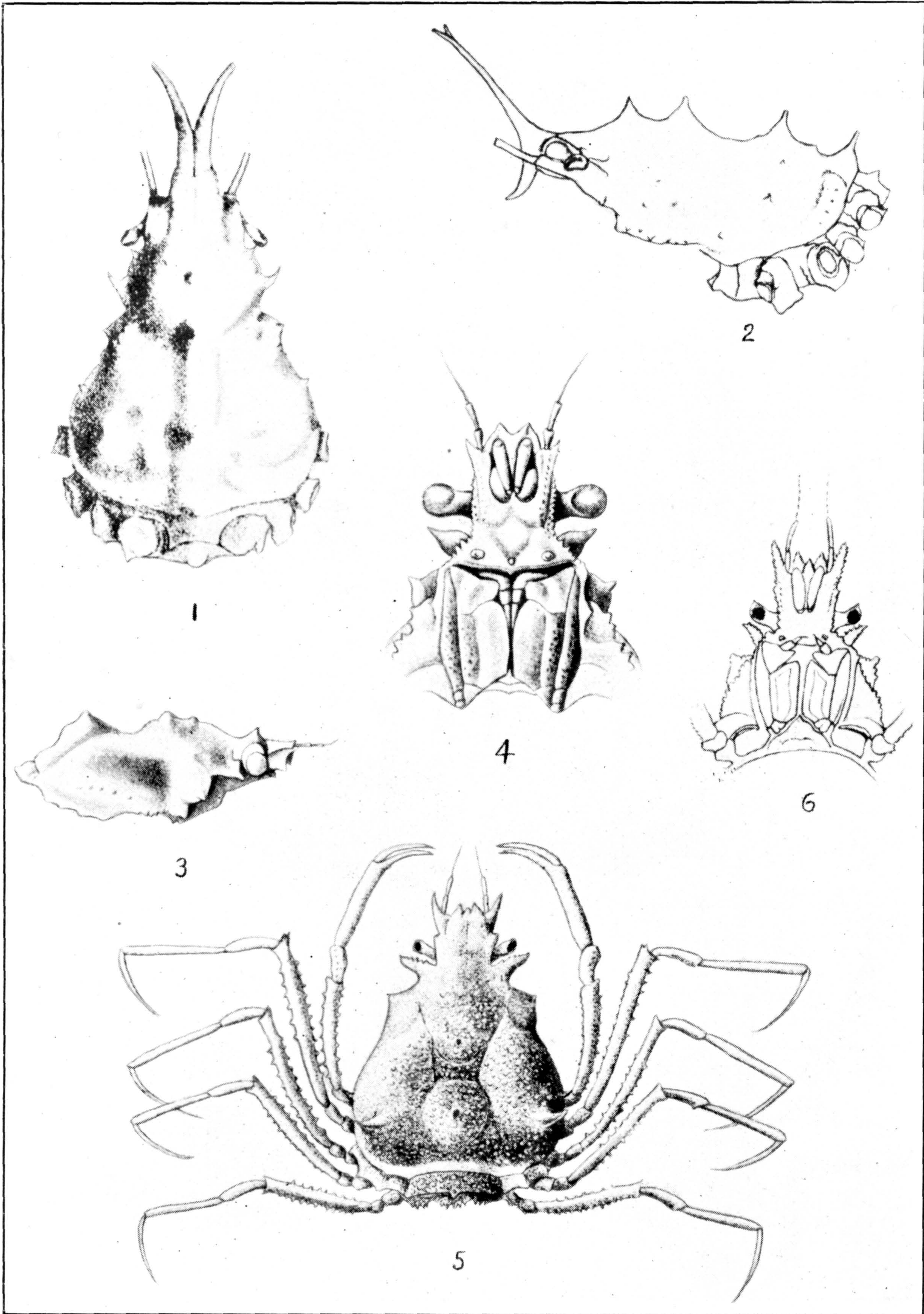
1, 2. *EUPROGNATHA RASTELLIFERA*. (PAGE 96.) 3, 4. *E. RASTELLIFERA MARTHAE*. (PAGE 96)

FOR EXPLANATION OF PLATE SEE PAGE 563



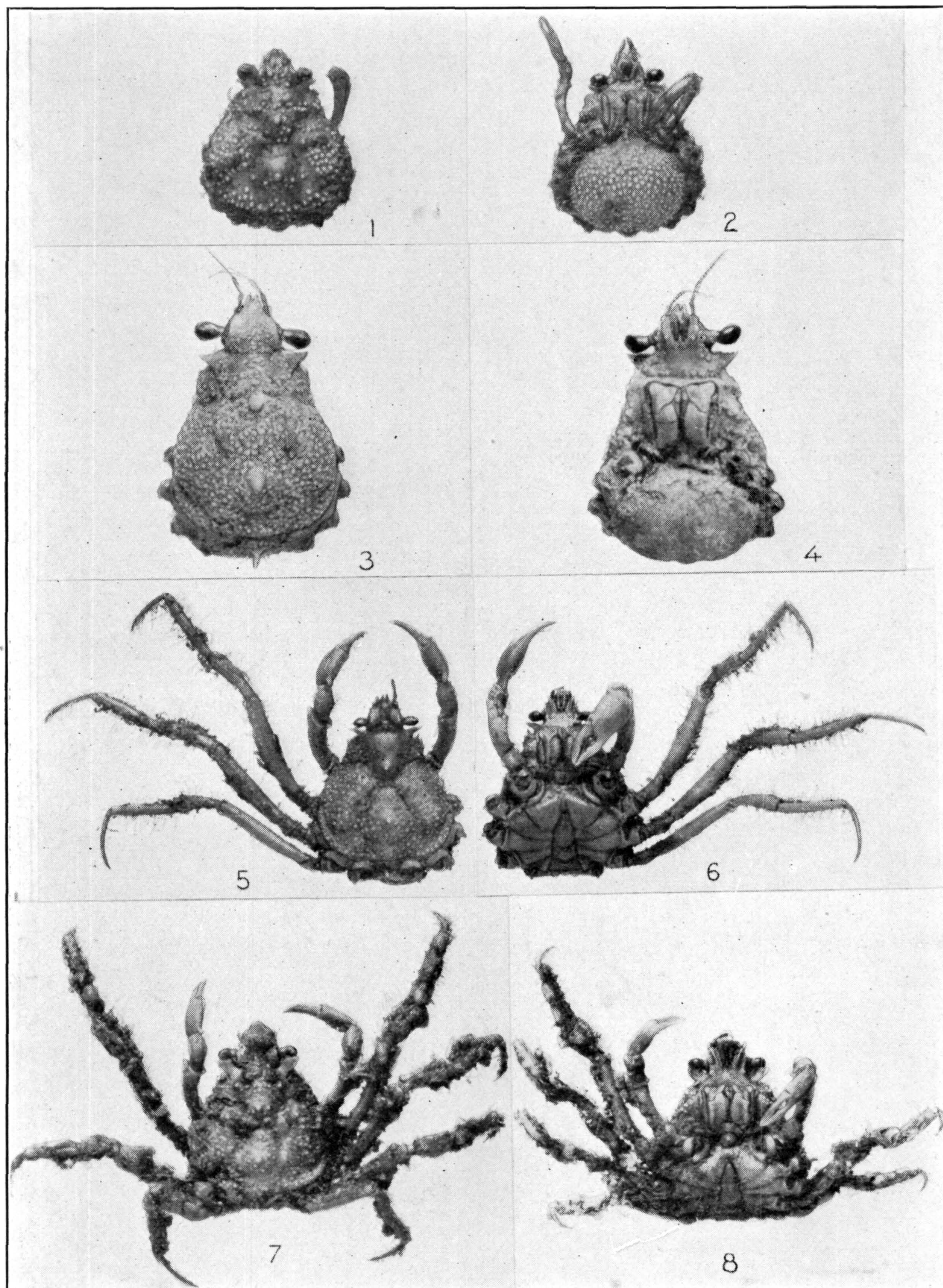
1, 2. *EUPROGNATHA RASTELLIFERA ACUTA*. (PAGE 96.) 3, 4. *E. GRACILIPES*.
(PAGE 101.) 5, 6. *E. BIFIDA*. (PAGE 103)

FOR EXPLANATION OF PLATE SEE PAGE 563



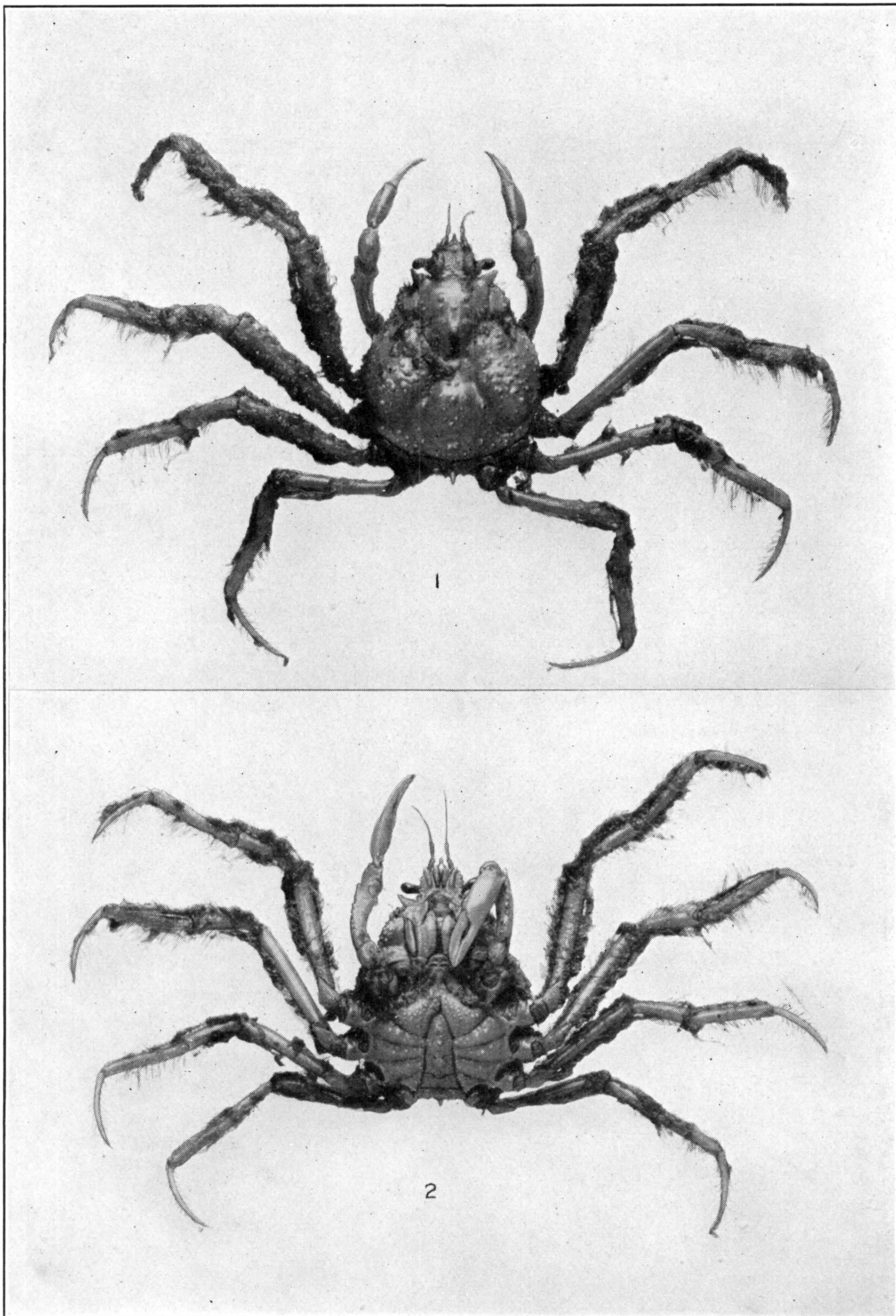
1, 2. EURYPODIUS LONGIROSTRIS. (PAGE 83.) 3, 4. EUPROGNATHA RASTELLIFERA. (PAGE 96.) 5, 6. E. GRANULATA. (PAGE 104)

FOR EXPLANATION OF PLATE SEE PAGE 568



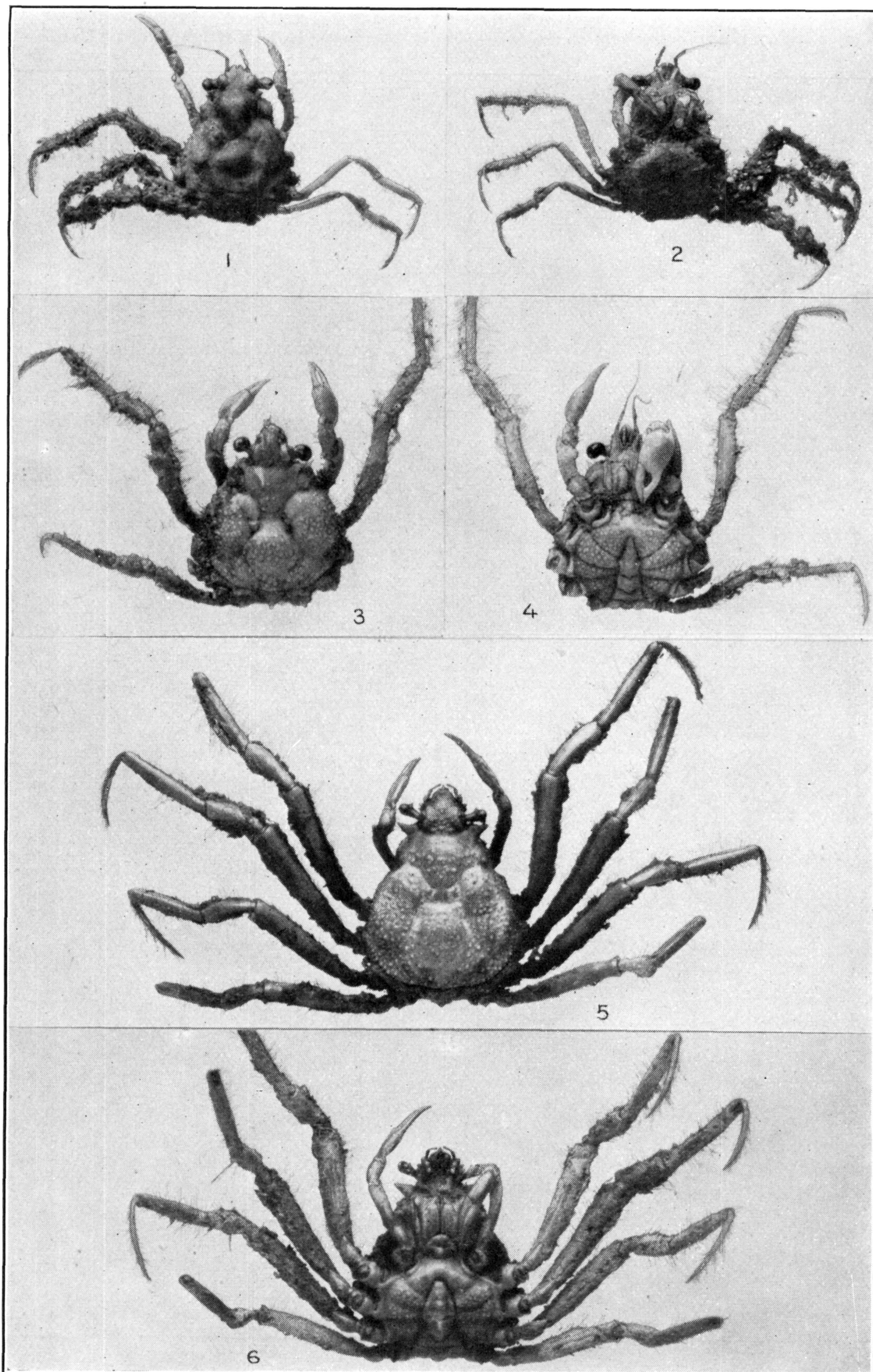
1, 2. COLLODES GRANOSUS. (PAGE 106.) 3, 4. C. OBESUS. (PAGE 109.)
5, 6. C. TRISPINOSUS. (PAGE 107.) 7, 8. C. ROSTRATUS. (PAGE 110)

FOR EXPLANATION OF PLATE SEE PAGE 568



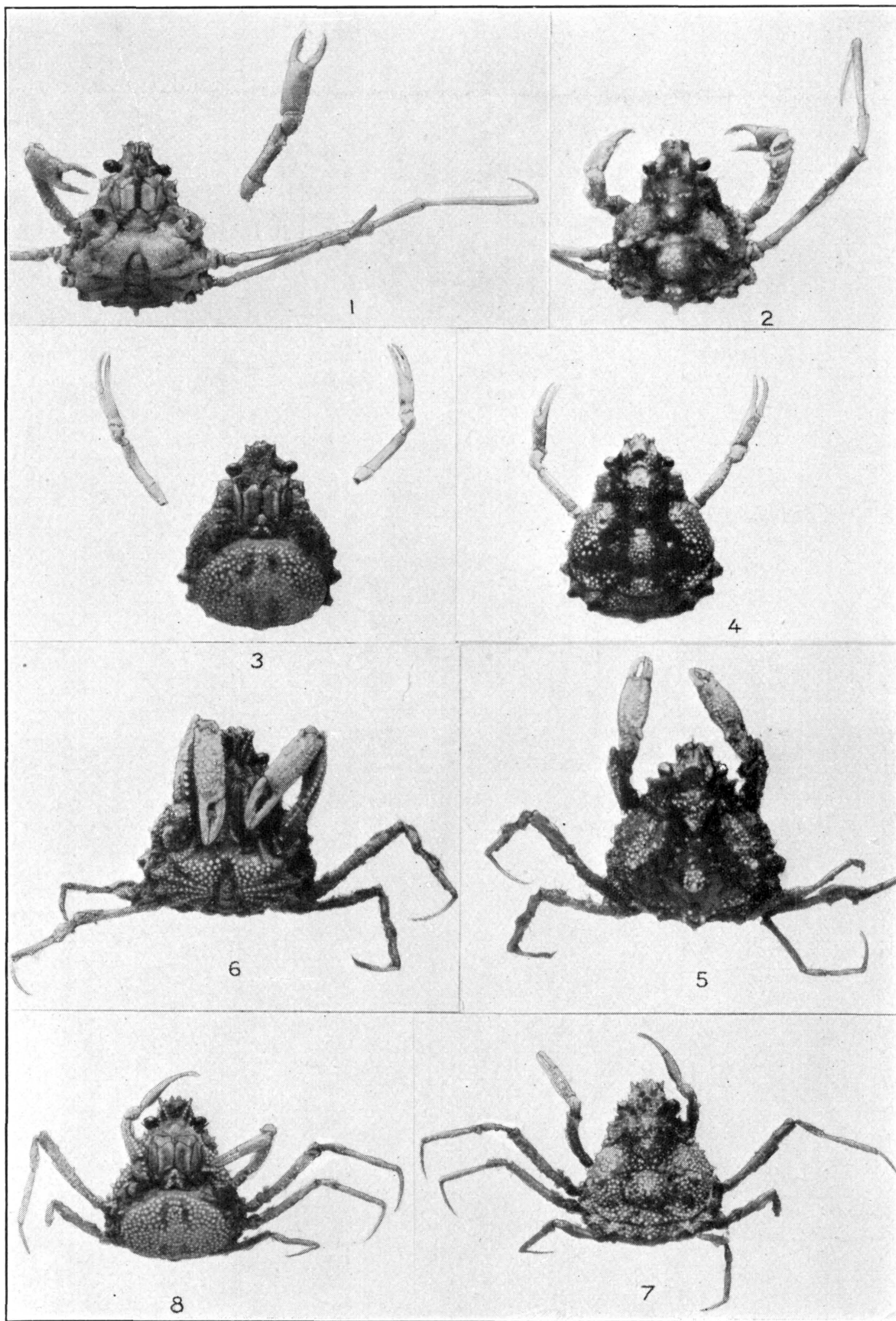
COLLODES TENUIROSTRIS. (PAGE 113)

FOR EXPLANATION OF PLATE SEE PAGE 568



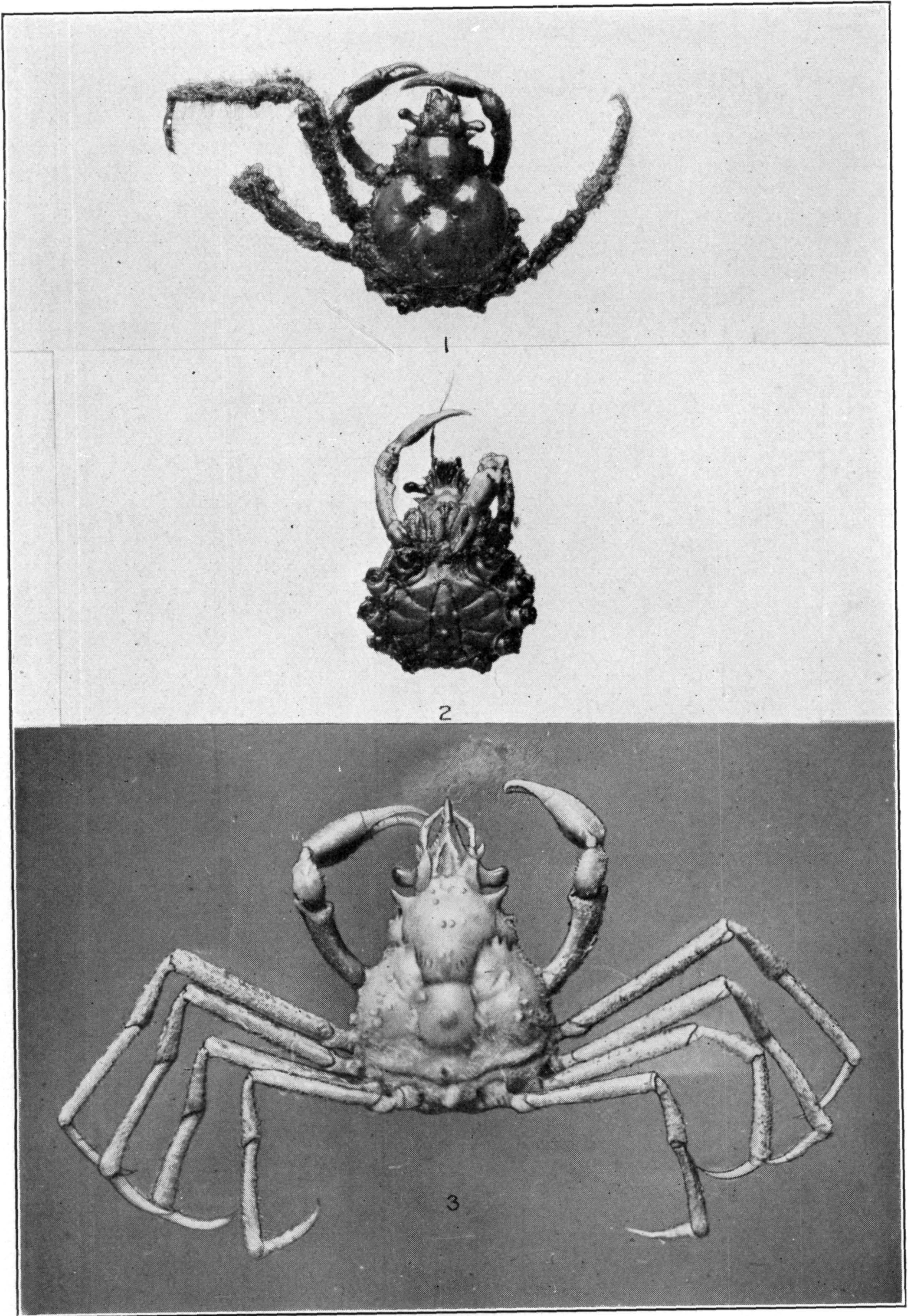
1, 2. COLLODES LEVIS. (PAGE 120.) 3, 4. C. INERMIS. (PAGE 119.)
5, 6. C. LEPTOCHELES. (PAGE 117)

FOR EXPLANATION OF PLATE SEE PAGE 569



1-4. *BATRACHONOTUS FRAGOSUS*. (PAGE 123.) 5-8. *B. NICHOLSI*.
(PAGE 127)

FOR EXPLANATION OF PLATE SEE PAGE 569



1, 2. COLLODES TUMIDUS. (PAGE 121.) 3. PYROMAIA TUBERCULATA.
(PAGE 133)

FOR EXPLANATION OF PLATE SEE PAGE 563