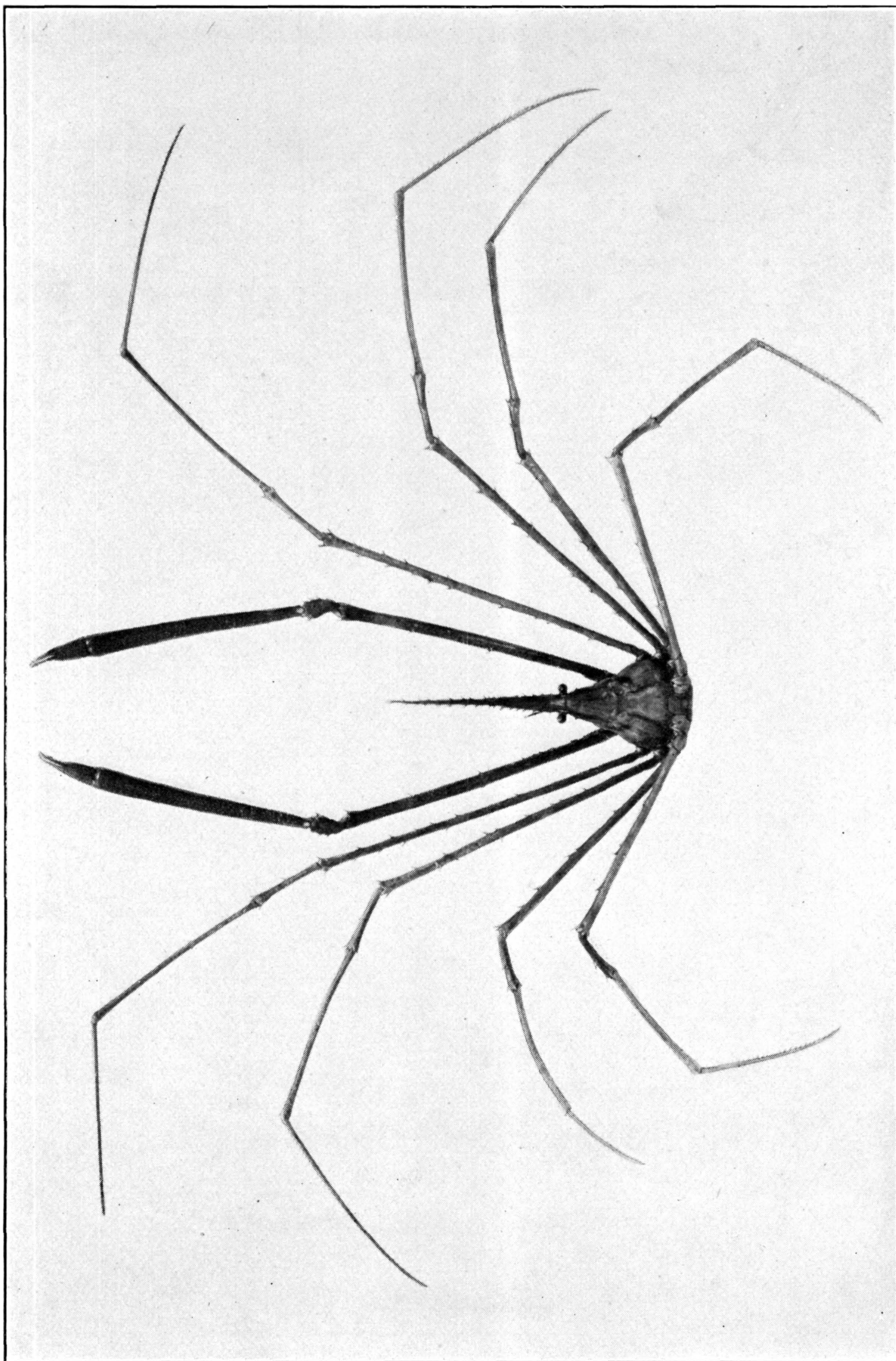


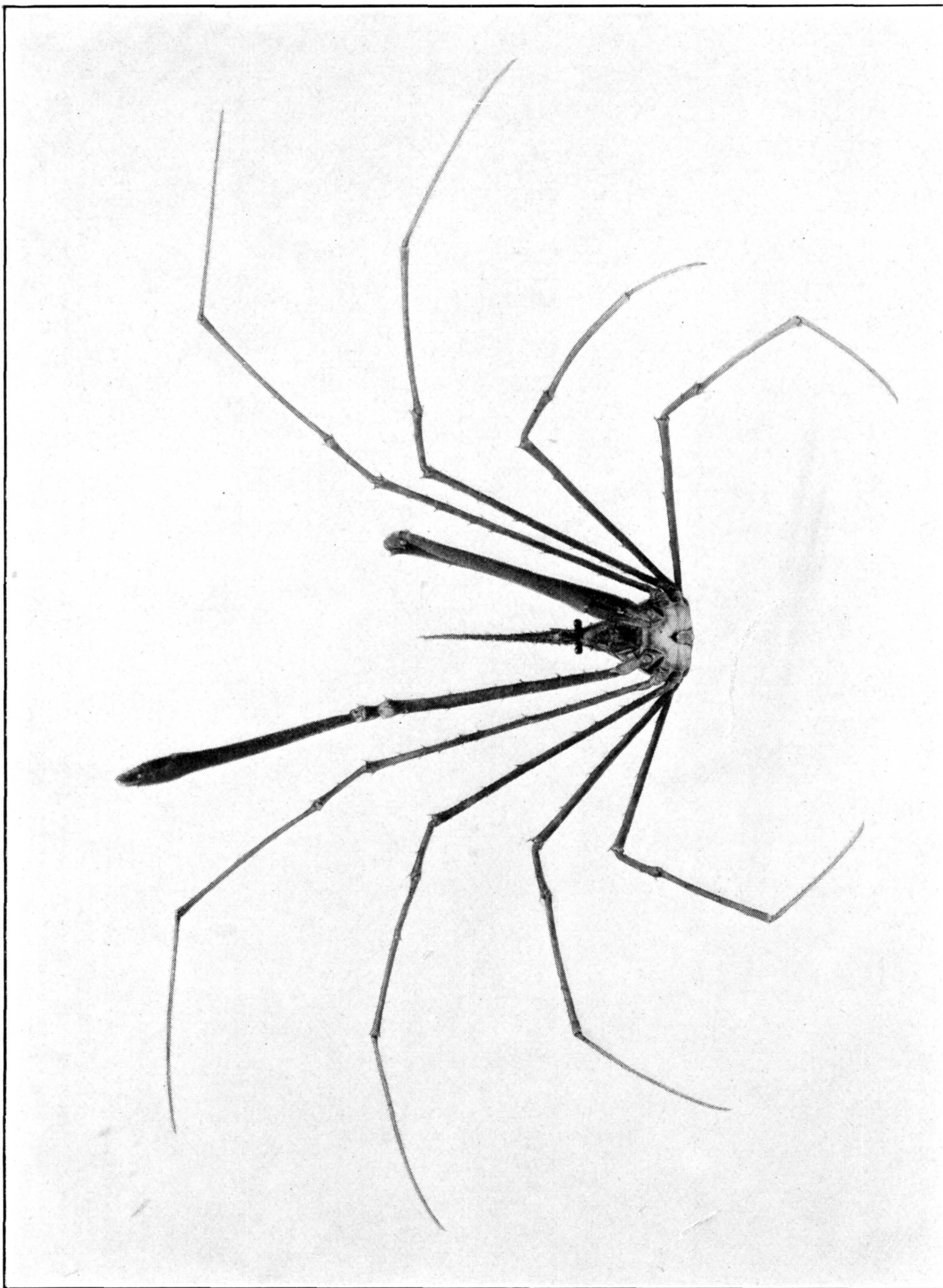
DASYGYIUS DEPRESSUS. (PAGE 138)

FOR EXPLANATION OF PLATE SEE PAGE 565



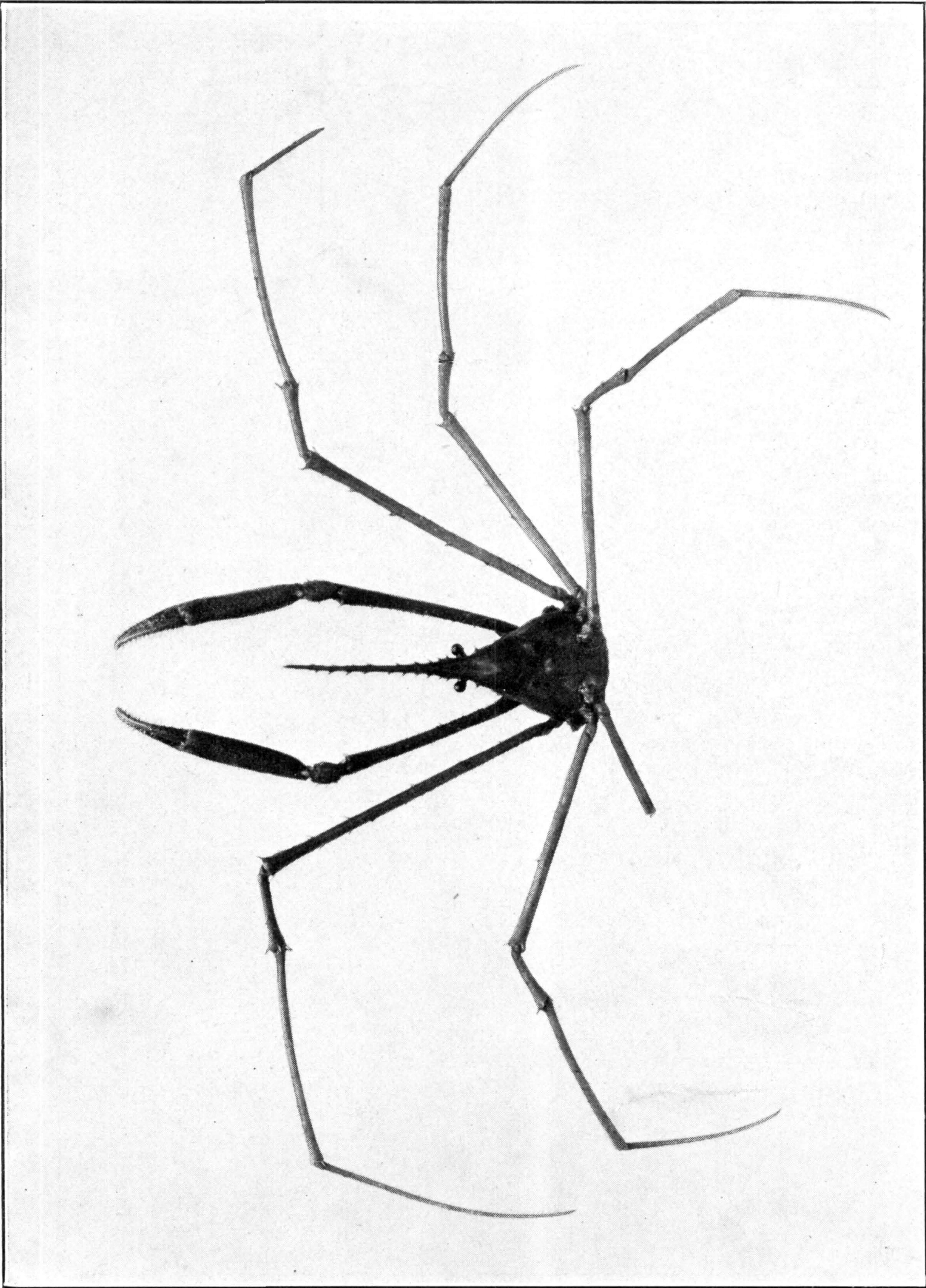
STENORYNCHUS SETICORNIS. (PAGE 13)

FOR EXPLANATION OF PLATE SEE PAGE 565



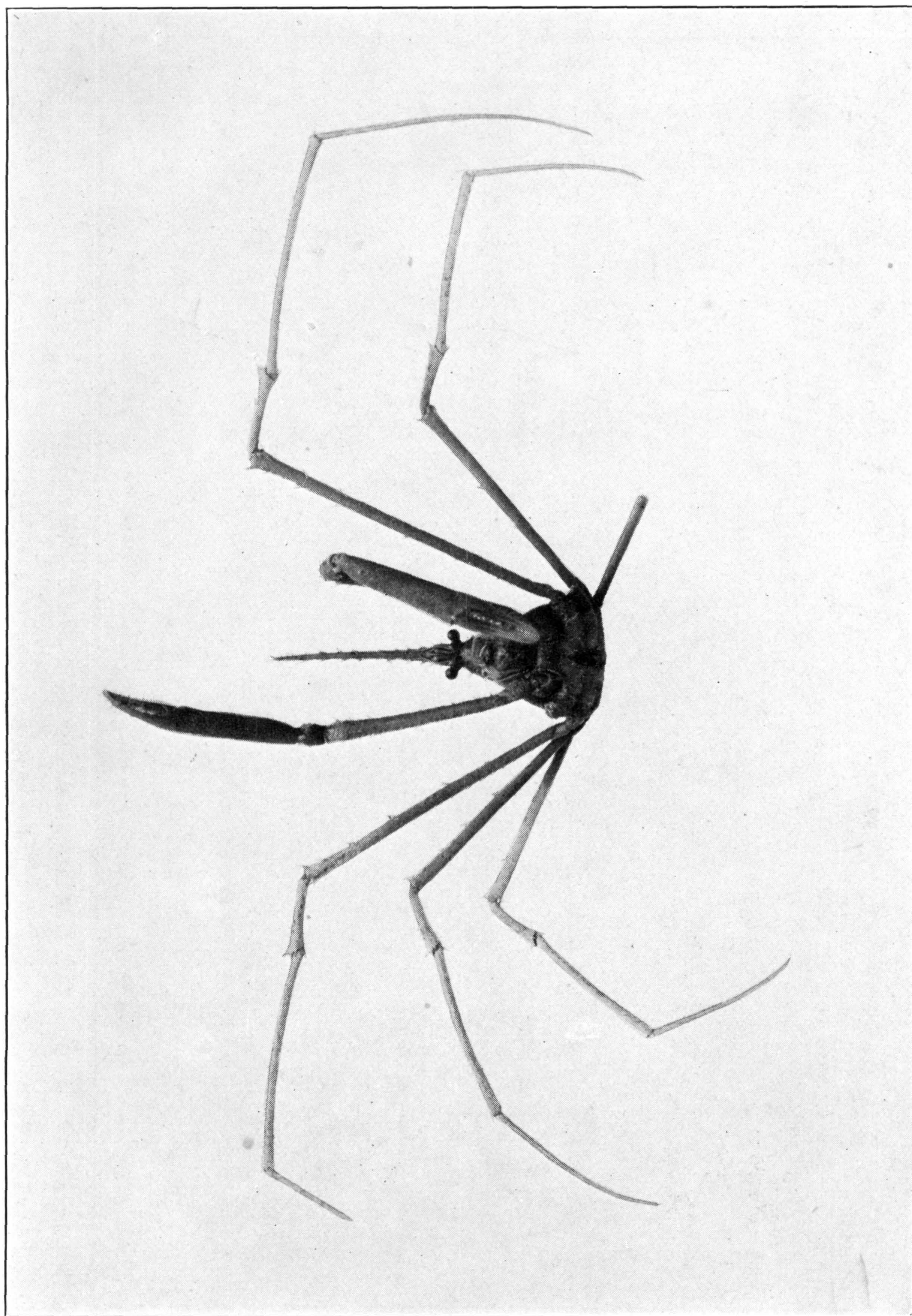
STENORYNCHUS SETICORNIS. (PAGE 13)

FOR EXPLANATION OF PLATE SEE PAGE 565



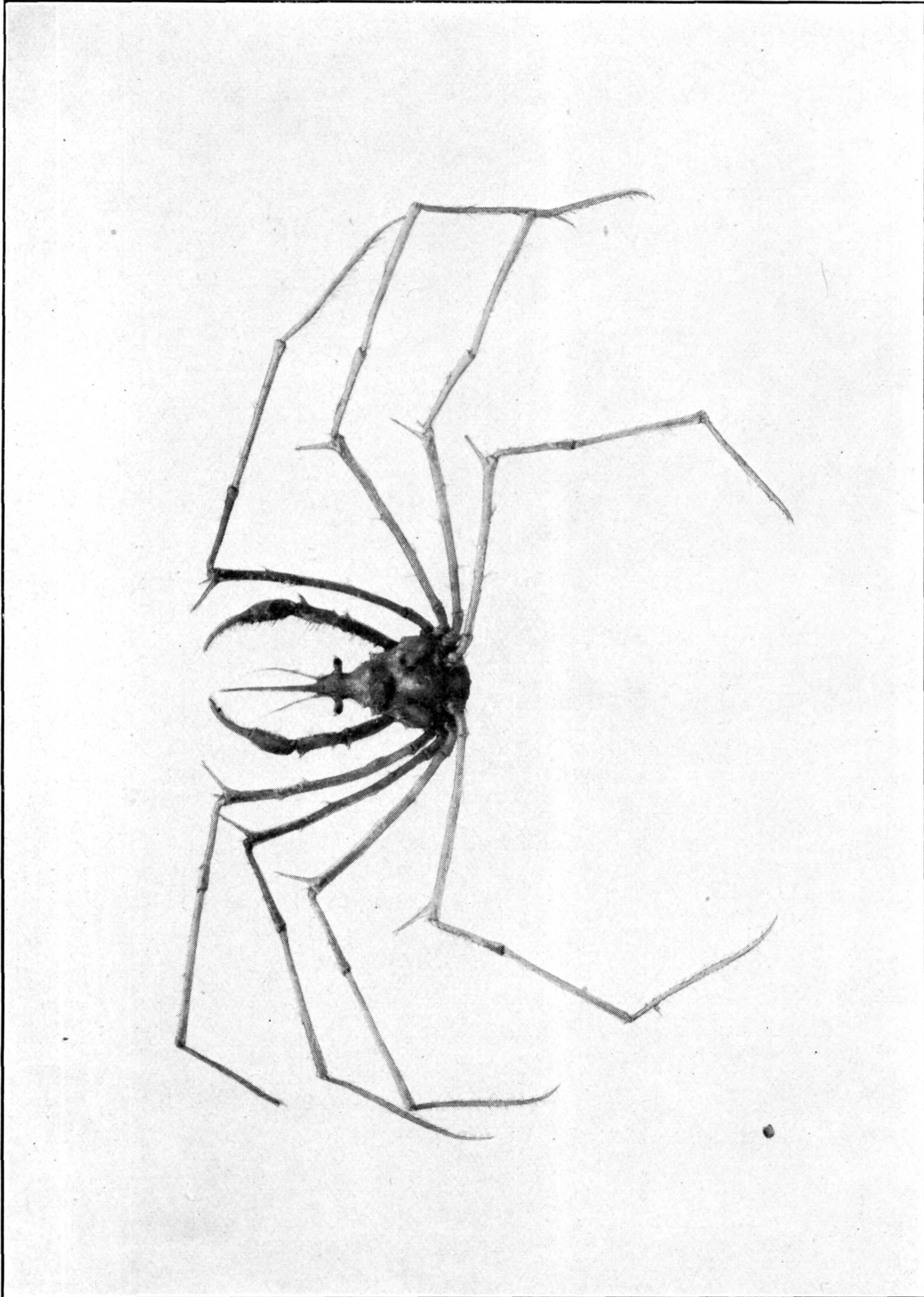
STENORYNCHUS DEBILIS. (PAGE 18)

FOR EXPLANATION OF PLATE SEE PAGE 565



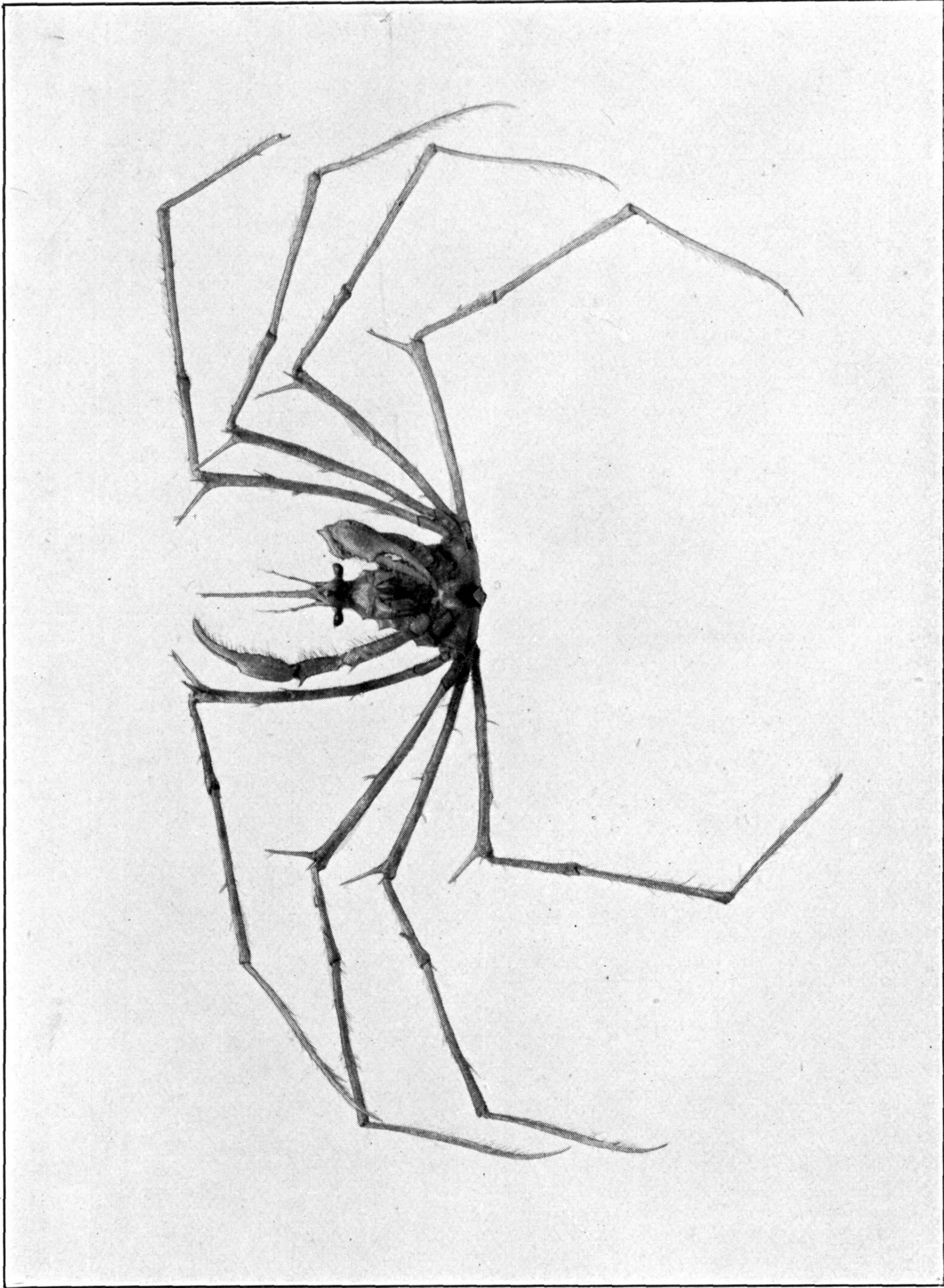
STENORYNCHUS DEBILIS. (PAGE 18)

FOR EXPLANATION OF PLATE SEE PAGE 565



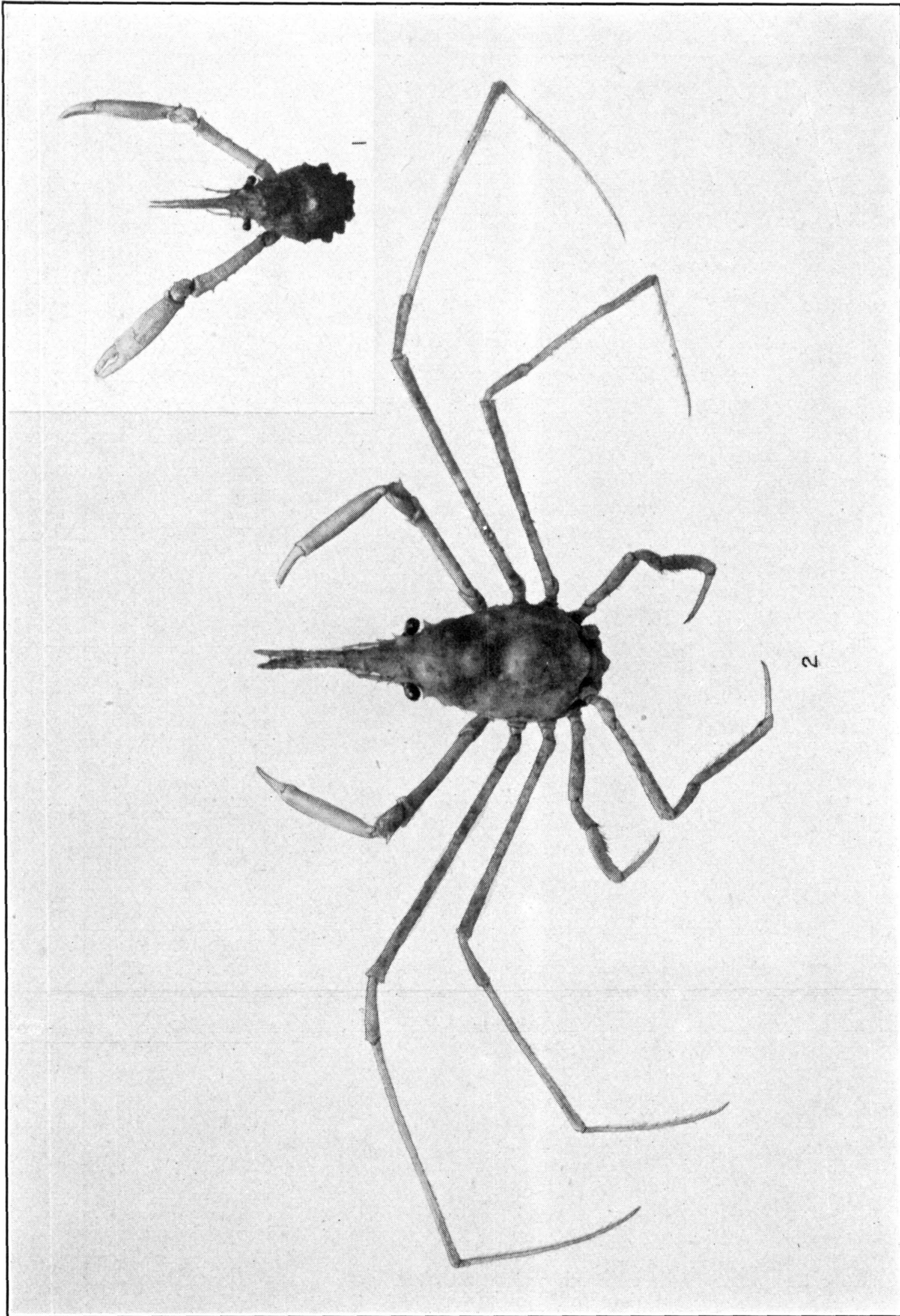
METOPORHAPHIS CALCARATA. (PAGE 21)

FOR EXPLANATION OF PLATE SEE PAGE 565



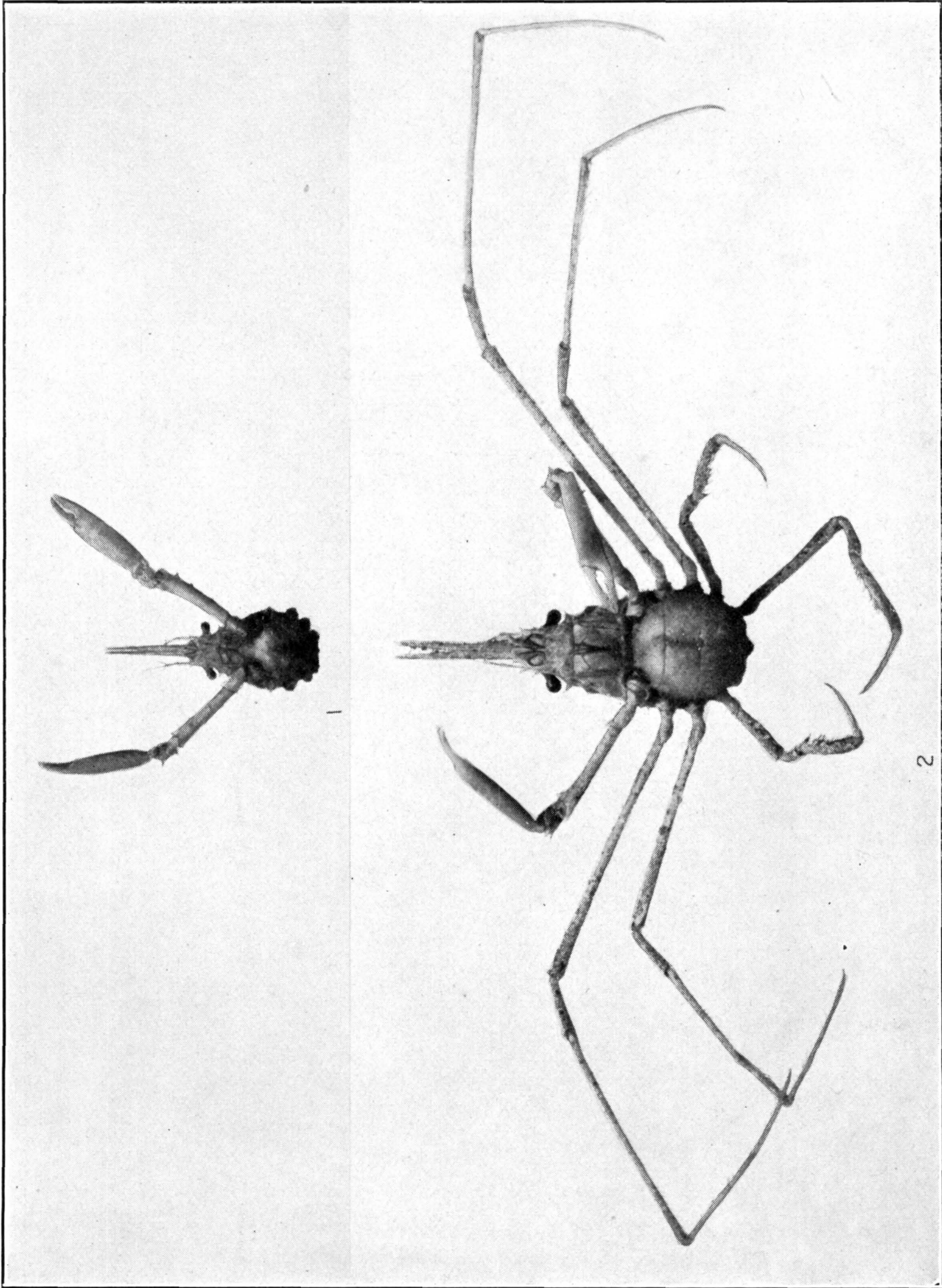
METOPORHAPHIS CALCARATA. (PAGE 21)

FOR EXPLANATION OF PLATE SEE PAGE 565



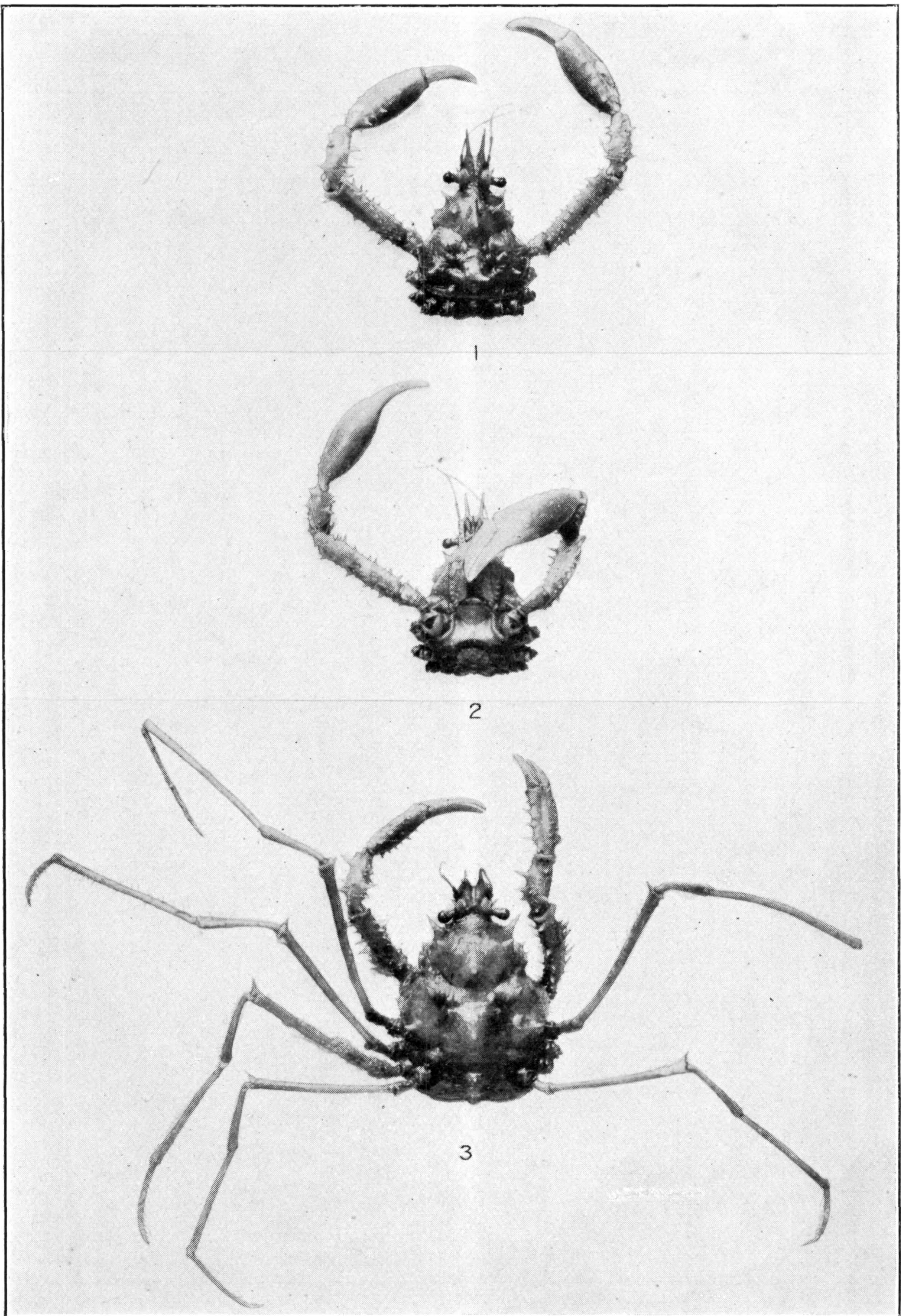
1. ANOMALOTHIR FRONTALIS. (PAGE 25.) 2. A. FURCILLATUS. (PAGE 24)

FOR EXPLANATION OF PLATE SEE PAGE 565



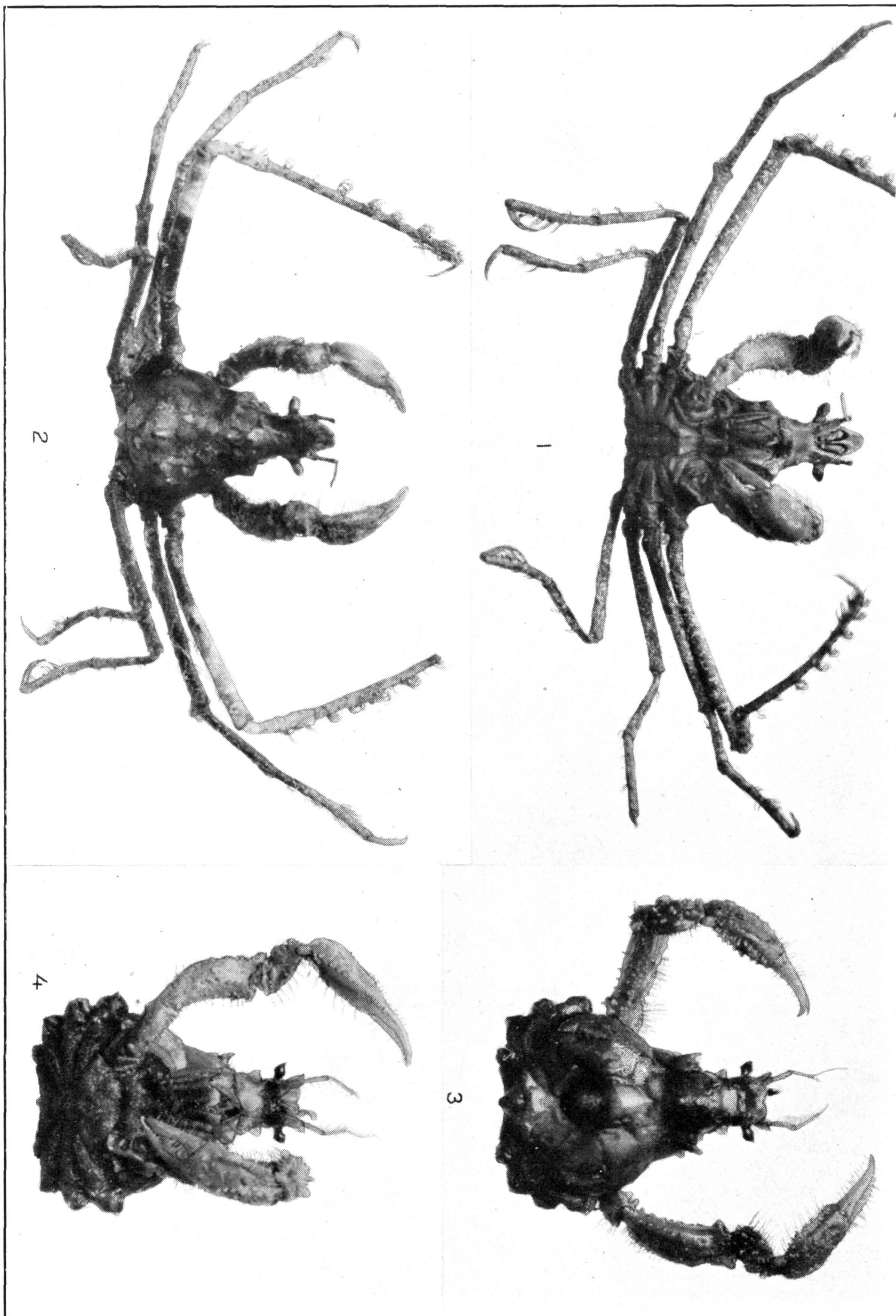
1. ANOMALOTHIR FRONTALIS. (PAGE 25.) 2. A. FURCILLATUS. (PAGE 24)

FOR EXPLANATION OF PLATE SEE PAGE 565



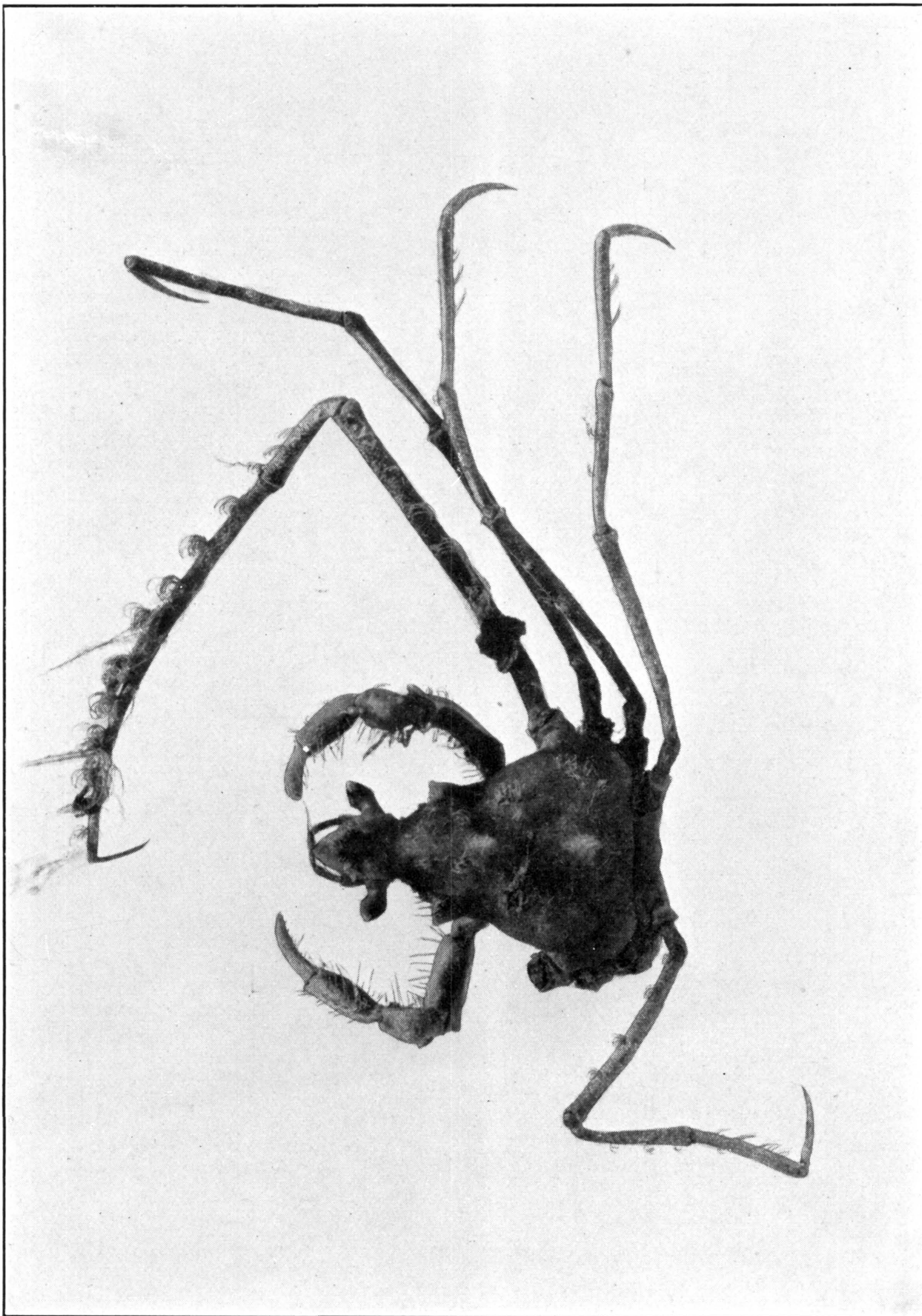
ACHAEOPSIS THOMSONI. (PAGE 29)

FOR EXPLANATION OF PLATE SEE PAGE 565



1, 2. *PODOCHELA* RIISEI. (PAGE 33.) 3, 4. *P. LOBIFRONS*. (PAGE 57)

FOR EXPLANATION OF PLATE SEE PAGE 566



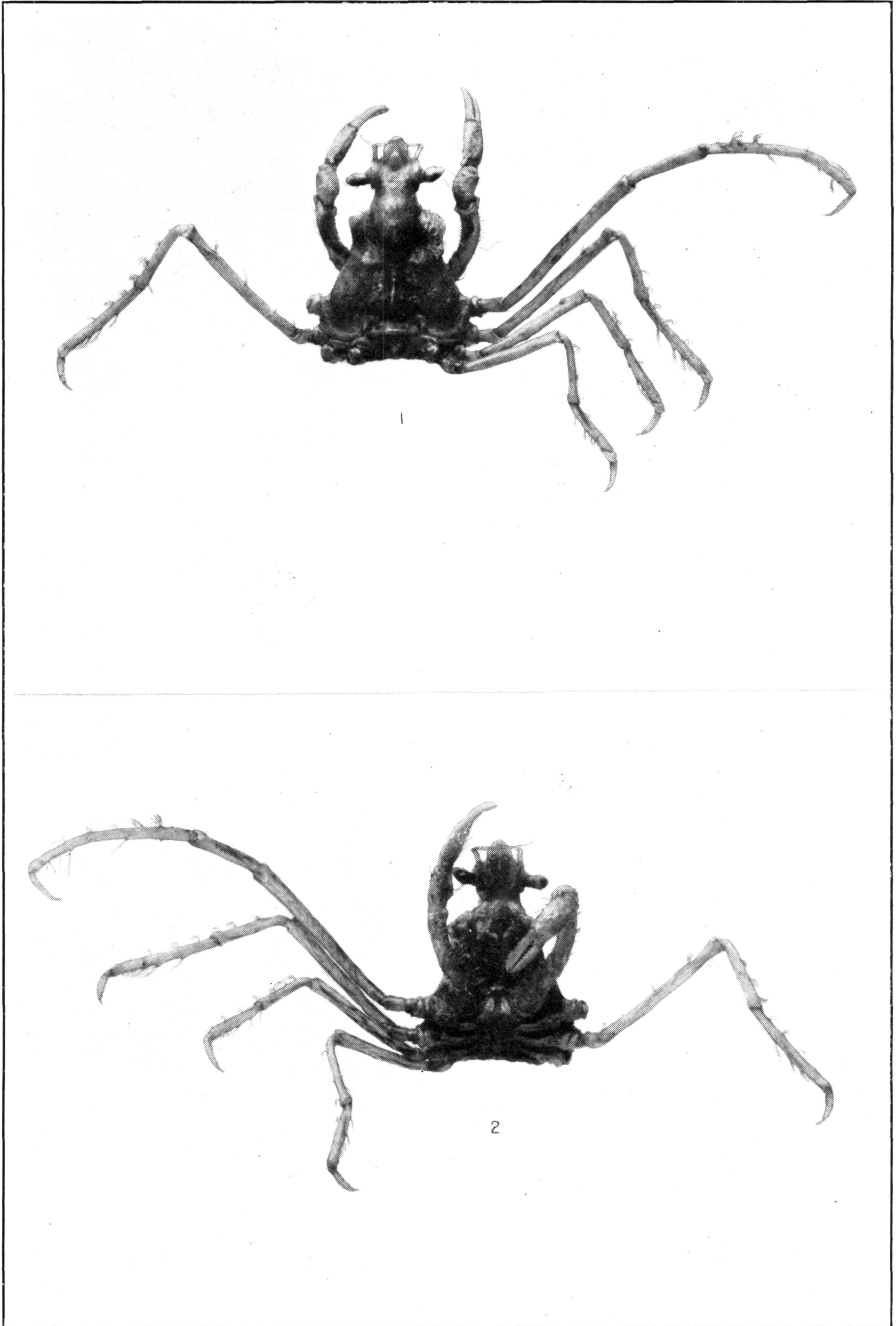
PODOCHEILA SIDNEYI. (PAGE 39)

FOR EXPLANATION OF PLATE SEE PAGE 566



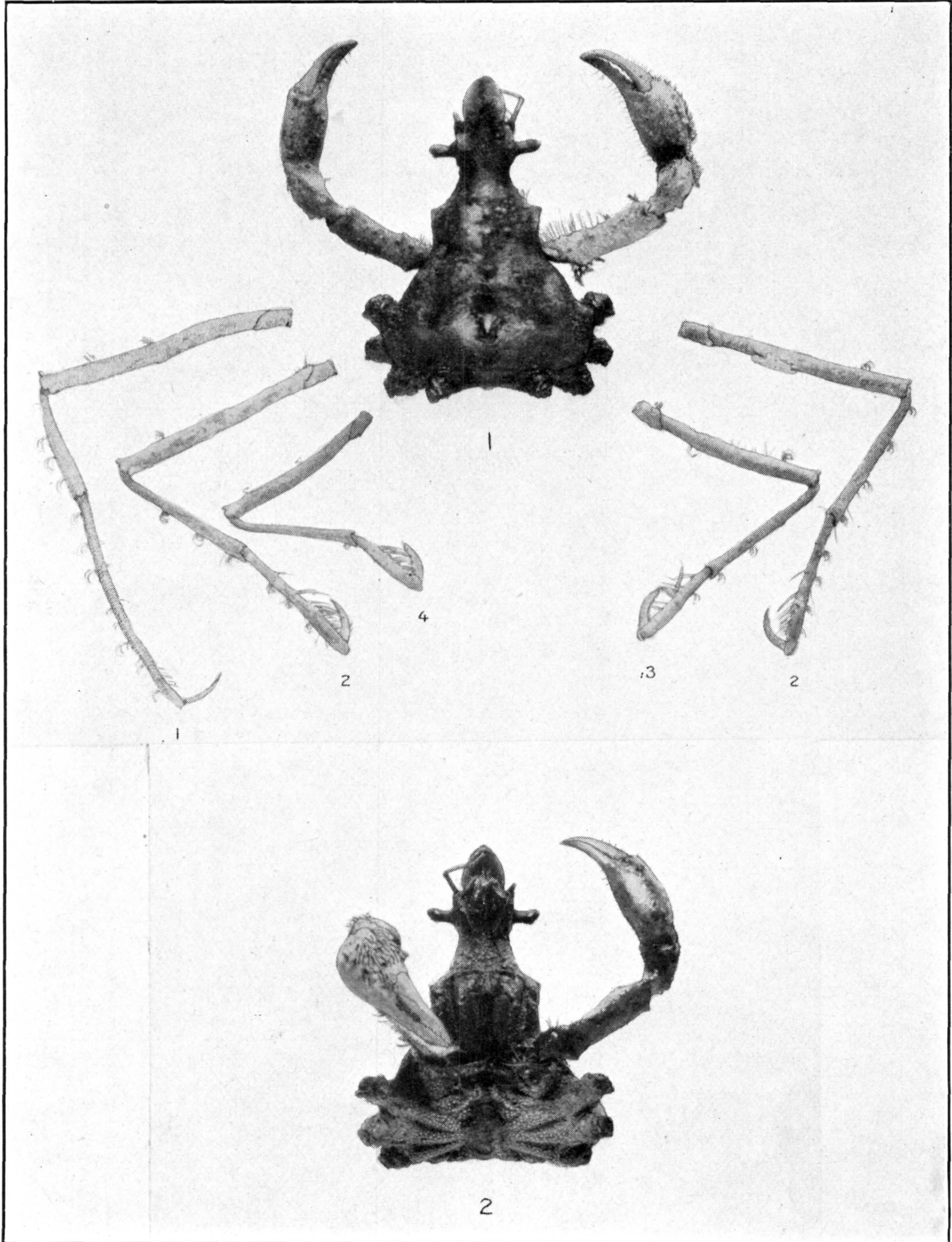
PODOCHELA SIDNEYI. (PAGE 38)

FOR EXPLANATION OF PLATE SEE PAGE 566



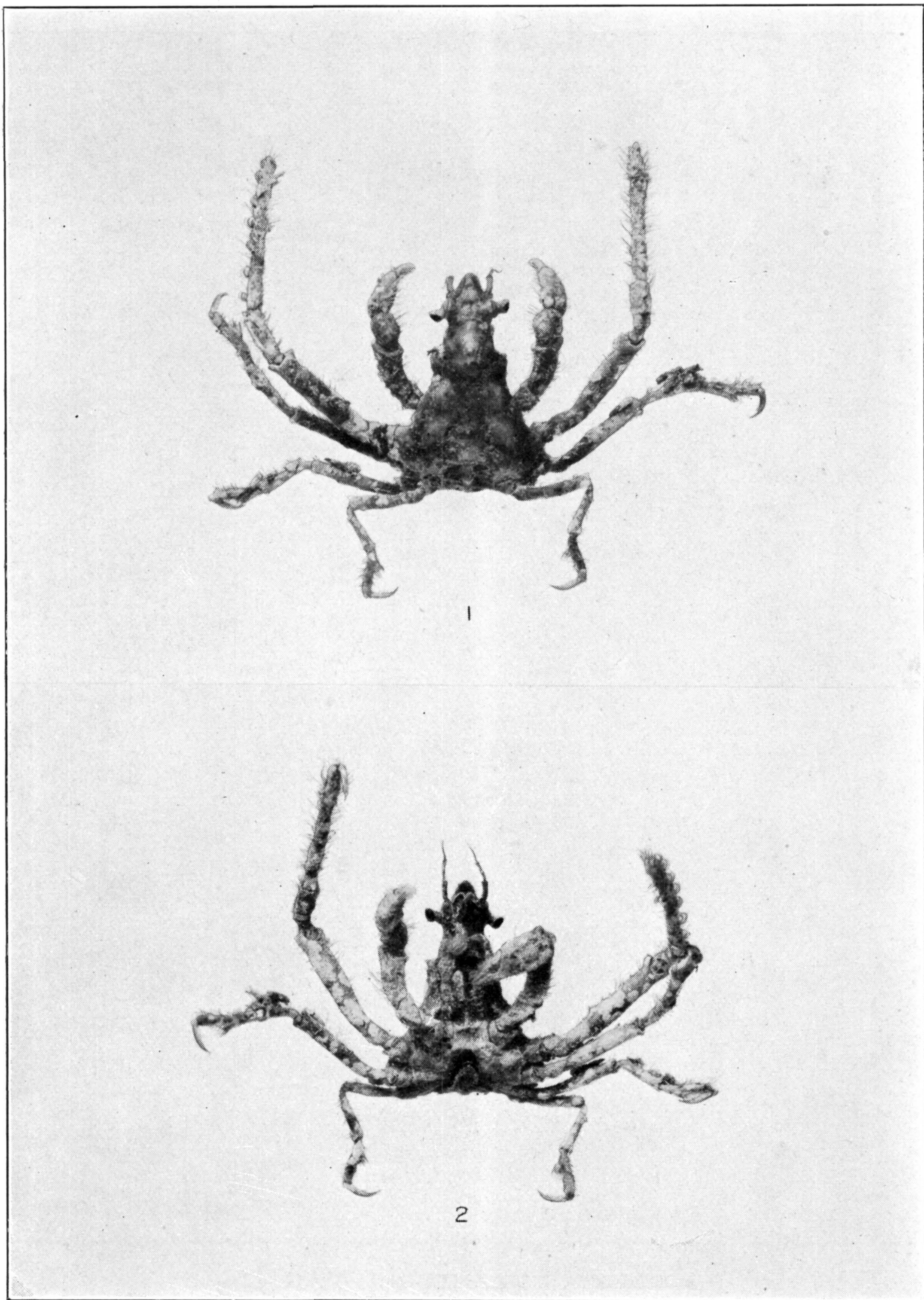
PODOCHELA VESTITA. (PAGE 42)

FOR EXPLANATION OF PLATE SEE PAGE 566



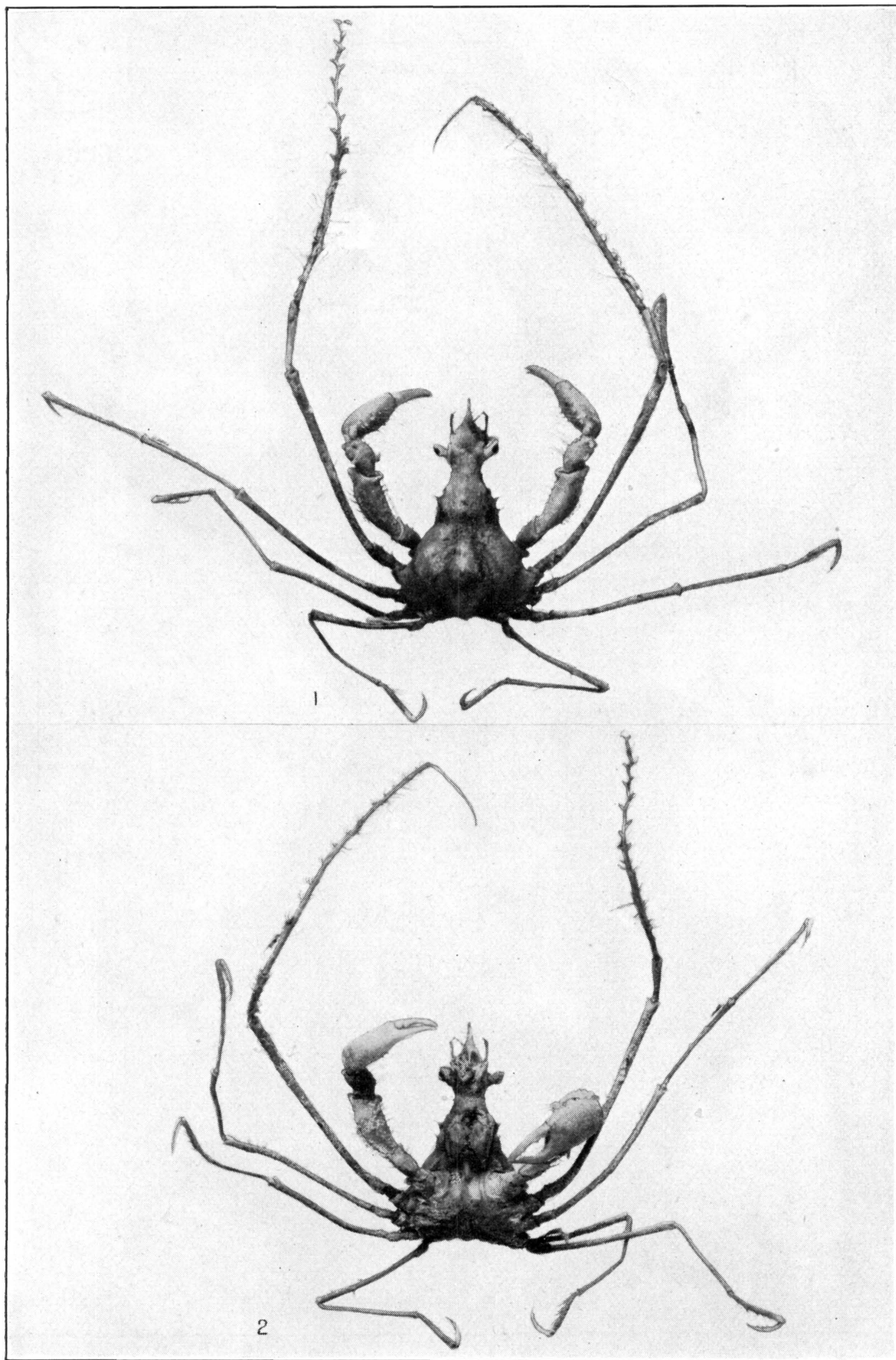
PODOCHELA MARGARITARIA. (PAGE 43)

FOR EXPLANATION OF PLATE SEE PAGE 566



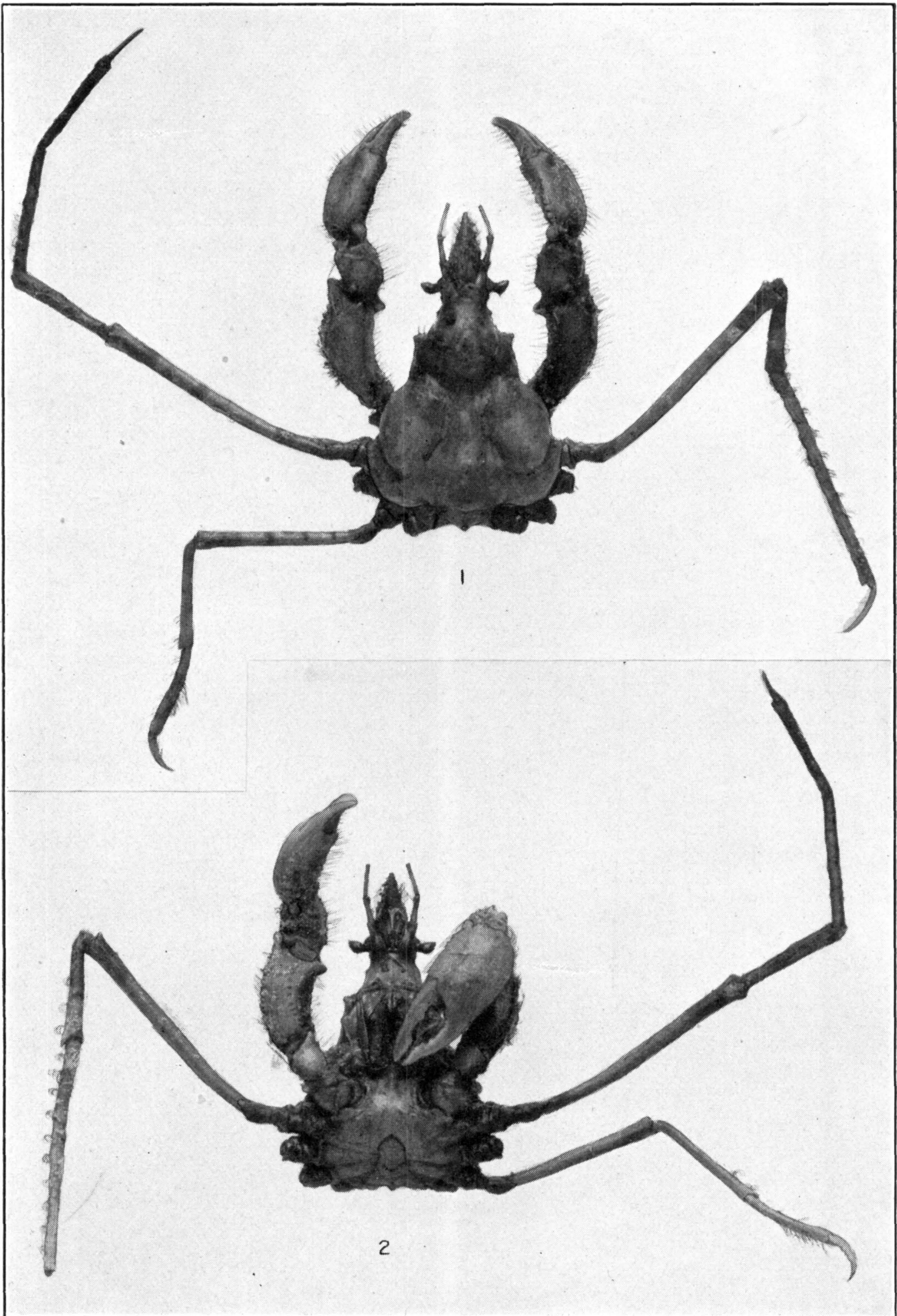
PODOCHELA MACRODERA. (PAGE 44)

FOR EXPLANATION OF PLATE SEE PAGE 566



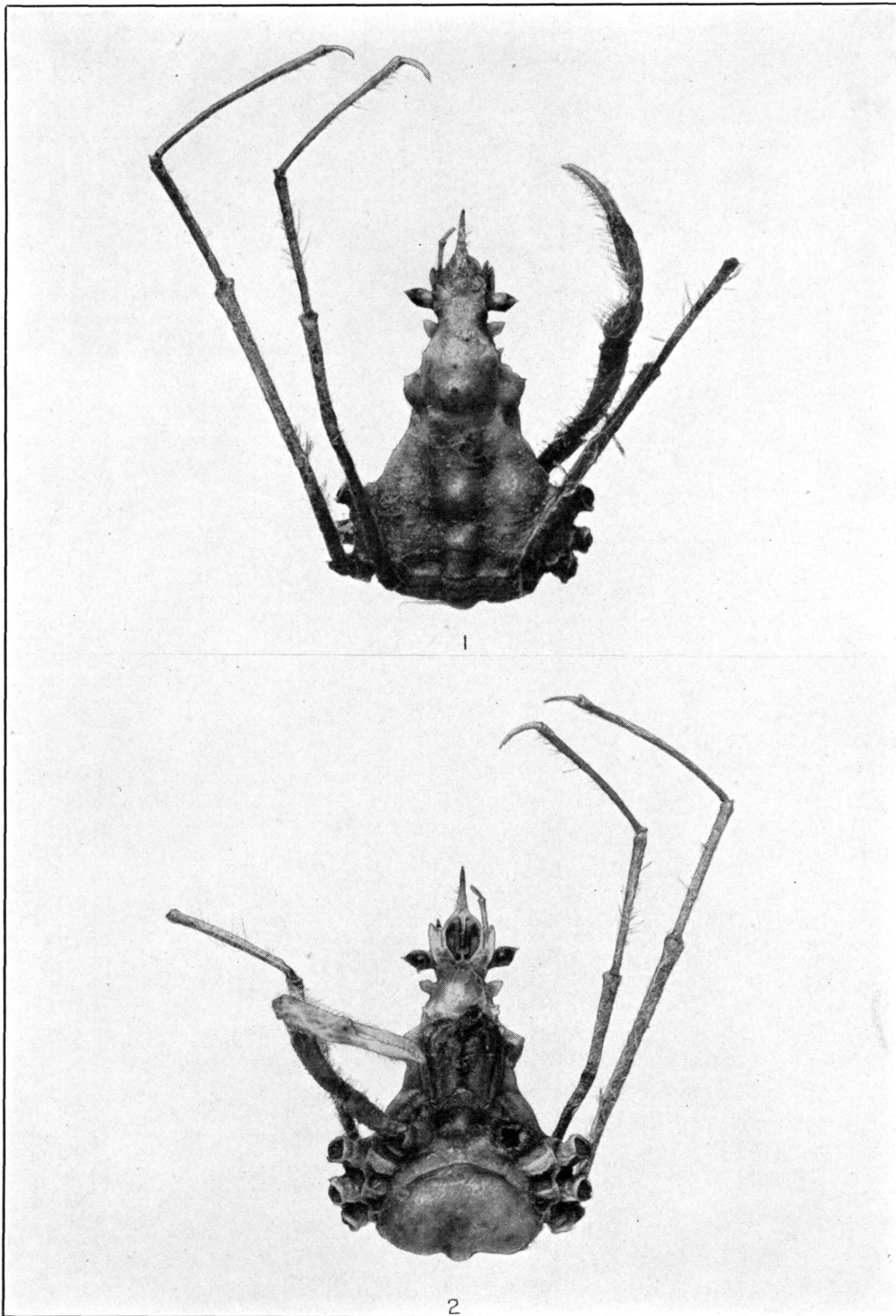
PODOCHELA GRACILIPES. (PAGE 47)

FOR EXPLANATION OF PLATE SEE PAGE 566



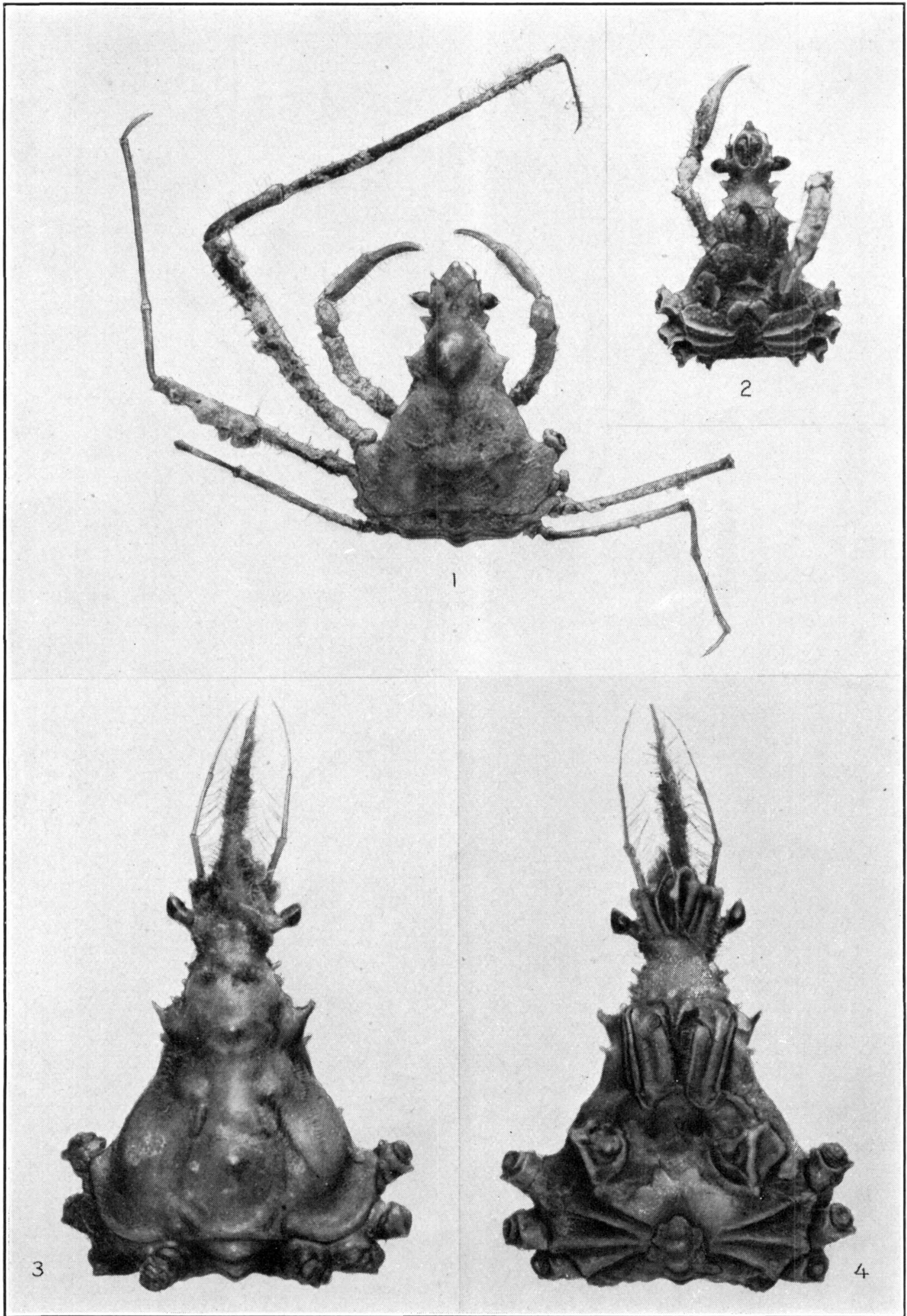
PODOCHEILA HEMPHILLII. (PAGE 49)

FOR EXPLANATION OF PLATE SEE PAGE 566



PODOCHEILA CURVIROSTRIS. (PAGE 50)

FOR EXPLANATION OF PLATE SEE PAGE 566



1, 2. PODOCHELA LAMELLIGERA. (PAGE 52.) 3, 4. P. BARBARENSIS. (PAGE 54)

FOR EXPLANATION OF PLATE SEE PAGE 566