

- m., m., li., mx. 1, maxp.* Mandibles, lower lip (in part), first maxilla, and maxillipeds.
gn. 2., prps. 1, 2, 3, 4, 5. Second gnathopod and the five peræopods, but only terminal part of the third peræopod drawn, and that on a higher scale of magnification, agreeing with the mouth-organs and the higher enlargement of the distal parts of the second gnathopod and the second peræopod.

PLATE 7.

A. *Calathura sladeni*, n. sp.

- n.s.* Line indicating actual length of the specimen figured below in dorsal and lateral view.
a.s., a.i. First and second antennæ.
li., m., mx. 1., maxp. Lower lip, mandible, first maxilla, and maxillipeds, these parts magnified on a higher scale than the other details.
gn. 1., gn. 2., prps. 1, 5. First and second gnathopods, first and fifth peræopods.
plp. 2, urp., T. Second pleopod, uropod and telson.

B. *Apanthura ænocheir*, n. sp.

- n.s.* Line indicating actual length of the specimen figured below in dorsal and lateral view.
C., a.s. Head, with first antenna on the right in position.
a.i. Second antenna.
m., m., mx. 1. The mandibles and first maxilla, magnified on a higher scale than the other details except the distal portion of the first gnathopod.
gn. 1., gn. 2., prp. 5. First and second gnathopods and fifth peræopod.
Pl., urp., urp. Dorsal view of pleon with the uropods.

PLATE 8.

A. *Eurydice humilis*, n. sp.

- n.s.* Line indicating length of male specimen figured below in three-quarter view.
C., a.s., a.i. The head, with first and second antennæ much more enlarged.
Pl. Part of pleon, enlarged to the same scale as the preceding and other detail figures, with the exceptions subsequently mentioned.
l.s. Upper lip.
m., m. The mandibles.
gn. 1., gn. 2., prps. 1, 2, 3, 4, 5. The two gnathopods and five peræopods in order.
plp. 2. The second pleopod, with higher magnification of the male appendix, to the same scale as the mouth-organs.
urp. One of the uropods.

B. *Pontogelos aselgokeros*, n. g. and sp.

- n.s.* Line indicating real length of specimen in lateral view on left of plate.
C.D., C.V. Dorsal view of head more enlarged with basal parts of first and second antennæ; and ventral view of head with frontal lamina and first peræon segment.
Pl.D., urp. Dorsal view of pleon (in part) with the uropods.
a.s., a.i. First and second antennæ.
m., m. The mandibles. The third joint of palp missing in one and its apex broken in the other.
li., mx. 1., mx. 2., maxp. Lower lip, first and second maxillæ and maxillipeds, all the mouth-organs magnified on a uniform scale.
gn. 1., gn. 2., prps. 1, 2, 3, 4, 5. First and second gnathopods and first to fifth peræopods.
plps. 1, 2, 3. First to third pleopods, the masculine appendix of the second pair more enlarged, on the same scale as the mouth-organs, which is much higher than that of the other details.

PLATE 9.

A. *Argathona reidi*, n. sp.

n.s. Dorsal view of specimen, natural size.

C., *Per. s. 1.*, *a.i.* Dorsal view of head and first peræon segment magnified, with first and second antennæ of left side *in situ*. Profile view of detached head on the right.

T., *urp.* Telsonic segment and uropod of left side to the same scale as the preceding figure and as the detail figures of antennæ, limbs, and pleopod.

a.s., *a.i.* First and second antennæ.

ep. Epistome, with frontal lamina. This and the mouth-organs are magnified to a higher scale than the preceding figures.

m., *m.*, *mx. 1.*, *mx. 2.*, *maxp.* The mandibles, first and second maxillæ, and maxillipeds.

gn. 1., *prp. 5.*, *plp. 2.* First gnathopod, fifth peræopod, and second pleopod. The spines besetting the distal margin of the peræopod's fifth joint are separately shown on a higher scale than any of the other figures.

B. *Æga ommatophylax*, Stebbing.

n.s. Line indicating natural size of the juvenile specimen figured above in dorsal aspect.

prp. 4., *prp. 5.* Fourth and fifth peræopods.

C. *Paracilicæa hanseni*, n. sp.

n.s. Lines indicating natural size of specimen figured in dorsal aspect.

l.s. Epistome and upper lip.

a.s. First antenna.

plp. 2., *m.a.* Second pleopod, with much higher magnification of the separated masculine appendix.

T., *urp.* Telsonic segment in dorsal view, with the uropods *in situ*. All the details are drawn to the same scale, except the separated appendix.

D. *Cymodoce zanzibarensis*, n. sp.

n.s. Lines indicating natural size of specimen figured in dorsal aspect.

plp. 2., *m.a.* Second pleopod, with much higher magnification of the separated masculine appendix.

T., *urp.* Telsonic segment with right uropod *in situ*. The details, except the separated appendix, are drawn to the same scale.

PLATE 10.

A. *Ergyne savignyi*, n. sp.

n.s. Lines indicating natural size of female specimen figured in dorsal, lateral, and ventral positions, marked respectively *D*, *L*, and *V*.

l.C., *maxp.* Maxillipeds in conjunction with hind lamina of the head.

Pl.V. Ventral view of pleon, showing on the left only the inner branch of the last three pleopods and the uropod, this and the preceding figure more highly magnified than the figures of the complete specimen.

n.s. ♂. Line indicating actual length of male specimen in dorsal view below.

♂. *V.* Ventral view of male more highly magnified, limbs of peræon omitted, except first gnathopod.

a.s. ♂, *a.i.* ♂, *gn. 1.* ♂. First and second antennæ and first gnathopod of male more enlarged, on the same scale as the tip of the head's lateral lappet and the front lobe of the maxilliped of the female.

B. *Dactylokepon catoptri*, n. sp.

- n.s.* ♀. Line indicating length of female specimen figured below.
Pl.V. Ventral view of pleon much more highly magnified.
l.C. Part of hind lamina of the head.
maxp. A maxilliped.
prp. 5. Fifth peræopod.

C. *Kepon halimi*, n. sp.

- n.s.* ♀. Line indicating length of female specimen figured below in dorsal view.
Pl.V. Ventral view of pleon, more enlarged, with higher magnification of some inner branches of the pleopods, those on left of the figure being closely curled.
l.C., maxp., gn. 1. A figure showing together *in situ* the hind lamina of the head, the maxillipeds, and one of the first gnathopods with part of its marsupial plate. Also *gn. 1* more enlarged.
prp. 5. Fifth peræopod of female, this and the preceding figure on the same scale as the ventral view of the pleon.
♂. The male magnified to the same scale as dorsal view of female, and above much more enlarged ventral view of male, without limbs of the peræon, except one first gnathopod.
C.D. ♂., C.V. ♂. Dorsal and ventral views of head of male, more enlarged.
gn. 1. ♂. First gnathopod of male more enlarged.

PLATE 11.

A. *Gigantione rathbunæ*, n. sp.

- n.s.* ♀. Lines indicating natural size of female in dorsal view, not including in the width the marsupial plates.
n.s. ♂. Line showing real length of male specimen figured below on the same scale as figure of female. A much more enlarged figure of the male on the left.
a.s., a.i. First and second antennæ of the female.
os., m.m. Mouth, showing the mandibles, not covered by the first antennæ or maxillipeds.
prp. One of the hinder peræopods of the female, with lateral lobe of segment.
Pl.V. Ventral view of pleon of female, with its five pairs of pleopods, and the uropods; part of first pleon segment not shown.
C.V. ♂. Ventral view of head of male, showing between the eyes the maxillipeds, flanked by the rudimentary second maxillæ, and, above, the mandibles projecting between the first antennæ, which are placed between the second antennæ.
gn. 1. ♂, prp. 5. ♂. First gnathopod and fifth peræopod of male.
plps 2, 3, 4, 5. ♂. Second to fifth pleopods of male.

The ventral view of the female pleon is less highly magnified than the other details, which are on the same scale for male and female.

B. *Trapezicepon amicorum* (Giard and Bonnier).

- n.s.* ♀. Lines indicating natural size of female figured below.
Pl.V. Ventral view of pleon, more enlarged.
Pl.D. Dorsal view of pleon (part).
urp. Uropod.
n.s. ♂. Line showing length of male specimen figured below.
a.i. ♂., gn. 1. ♂. Greatly enlarged figure of male in ventral view, second gnathopod and five peræopods omitted from right hand of the figure, the first and second antennæ and first gnathopod separately more enlarged.
x. x. Supposed females of unknown species, drawn to the same scale as the figures above them.

cr. Cryptoniscian form, of which the ventral view is shown in much higher magnification, the last four pairs of peræopods being omitted except one member of the last pair, and all five pairs of pleopods except one member of the first pair.

prp. 5., *plp.* 1. The fifth peræopod and first pleopod of the last-mentioned figure shown separately more enlarged.

cr'. Smaller cryptoniscian form, magnified on the same scale as the upper one, the separate figure of the uropod being enlarged to the same scale as the uropod in the figure below.

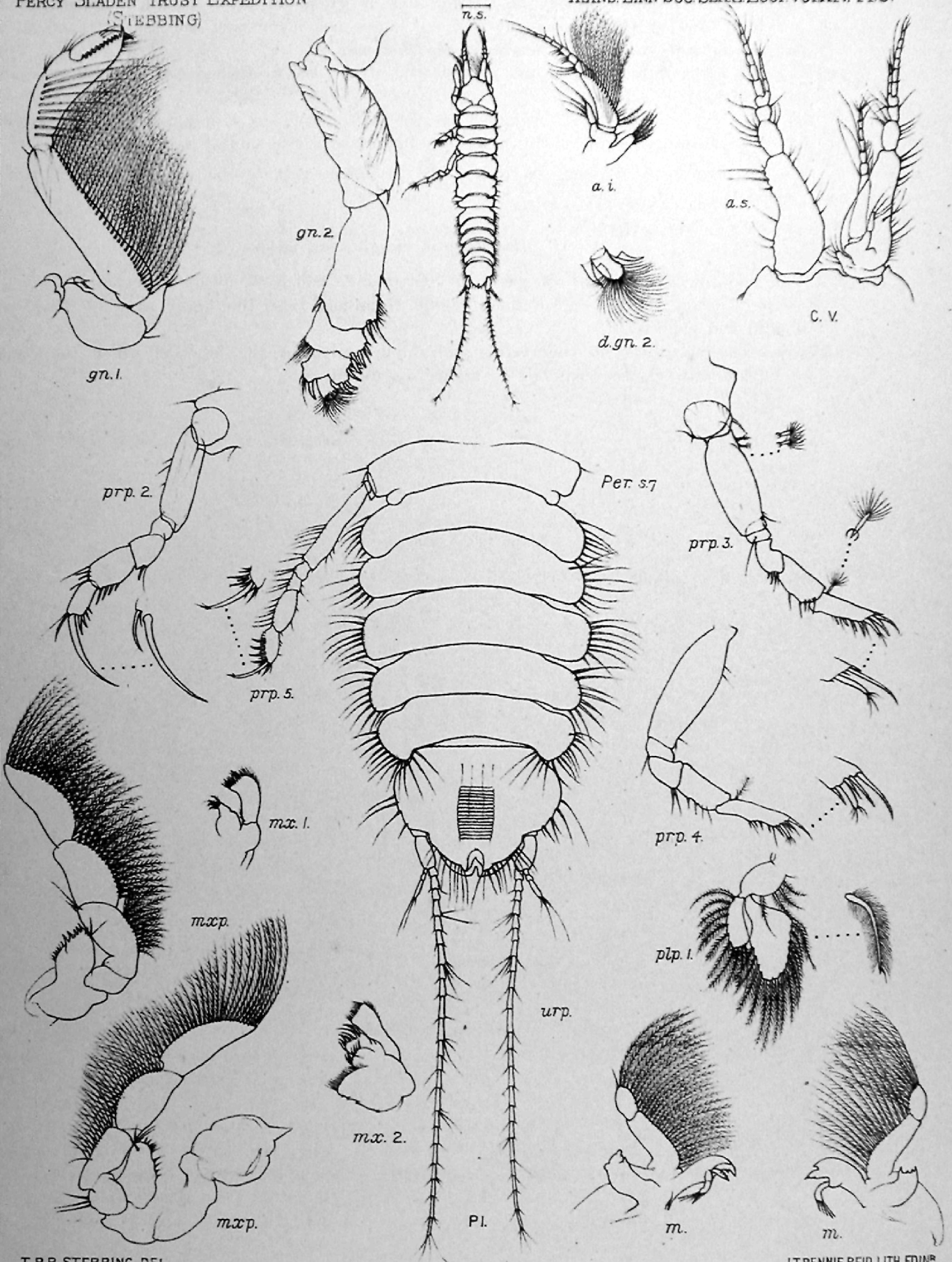
The six figures of complete specimens in the upper part of the plate are all of uniform enlargement.

C. *Dactylokepon richardsonæ*, n. sp.

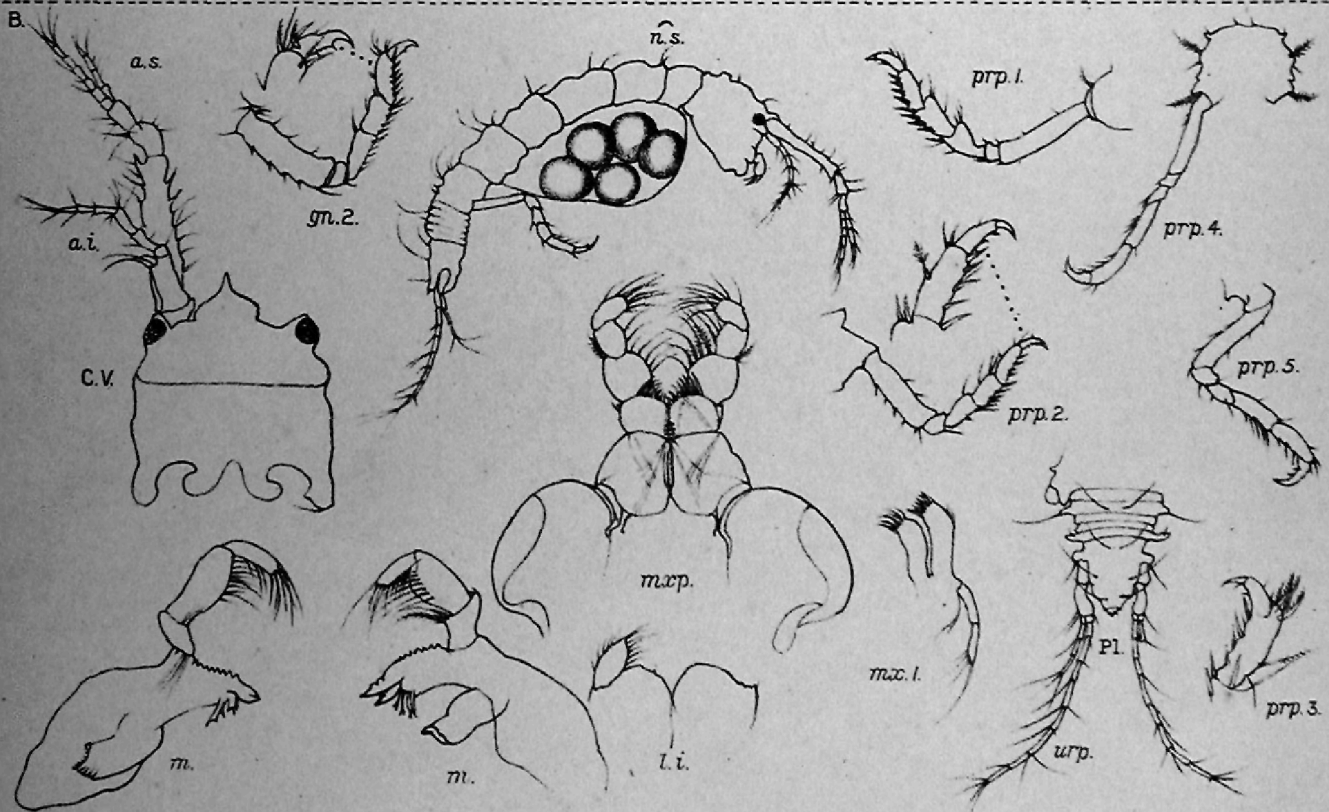
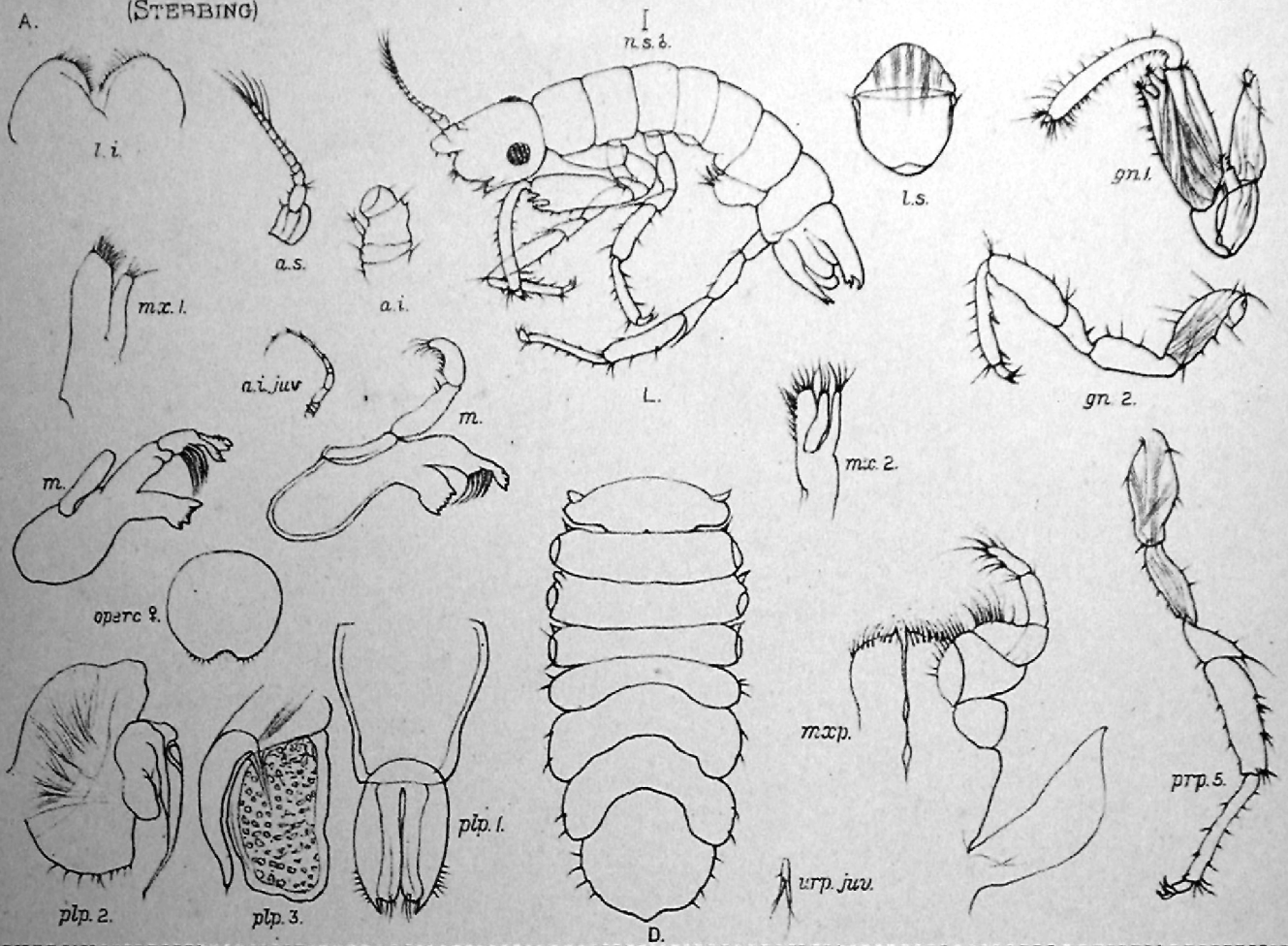
n.s. Line showing actual length of specimen figured, from which the pleon is detached.

Pl.V., wrp. Ventral view of pleon more highly magnified than the figure showing dorsal view of head and peræon.

l.C., maxp. The maxilliped in conjunction with hind lamina of the head, of which the digitate lateral lobes are shown separately in higher magnification.



KALLIAPSEUDES MAKROTHRIX n.g. et. sp.

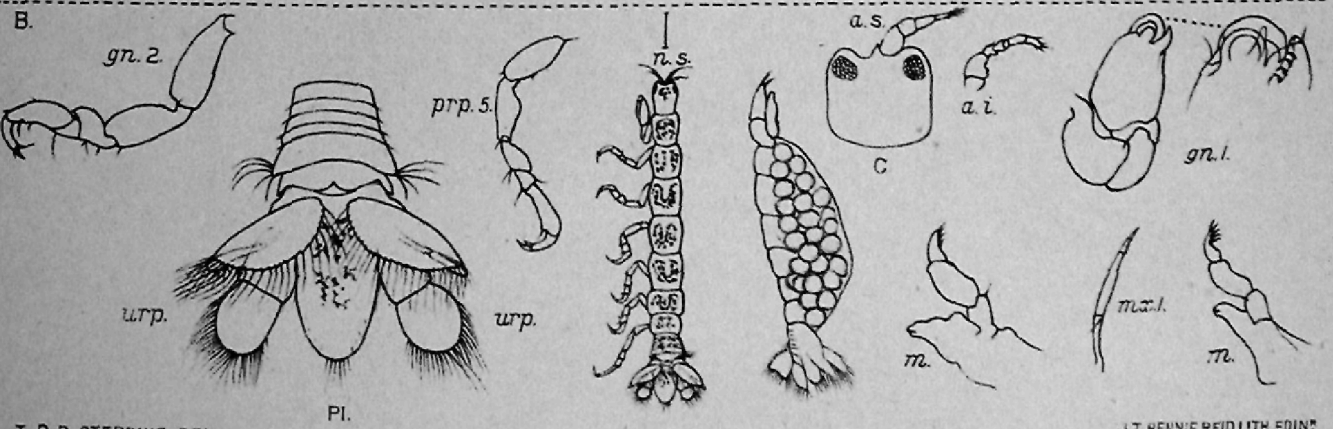
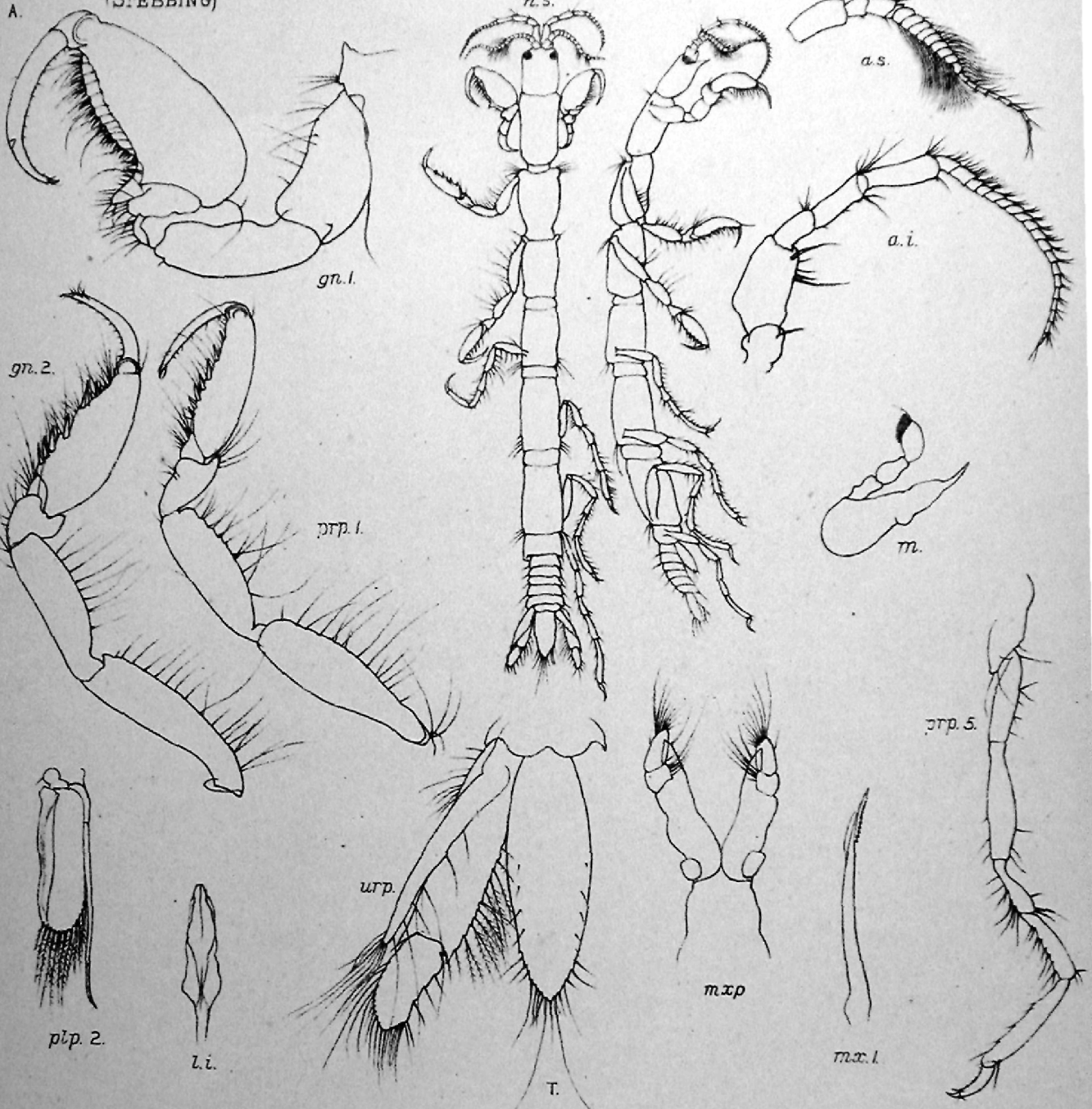


T. R. R. STEBBING DEL.

J. T. RENNIE REID LITH. EDIN^g

A. JANIRA CROSSLANDI. Stebbing

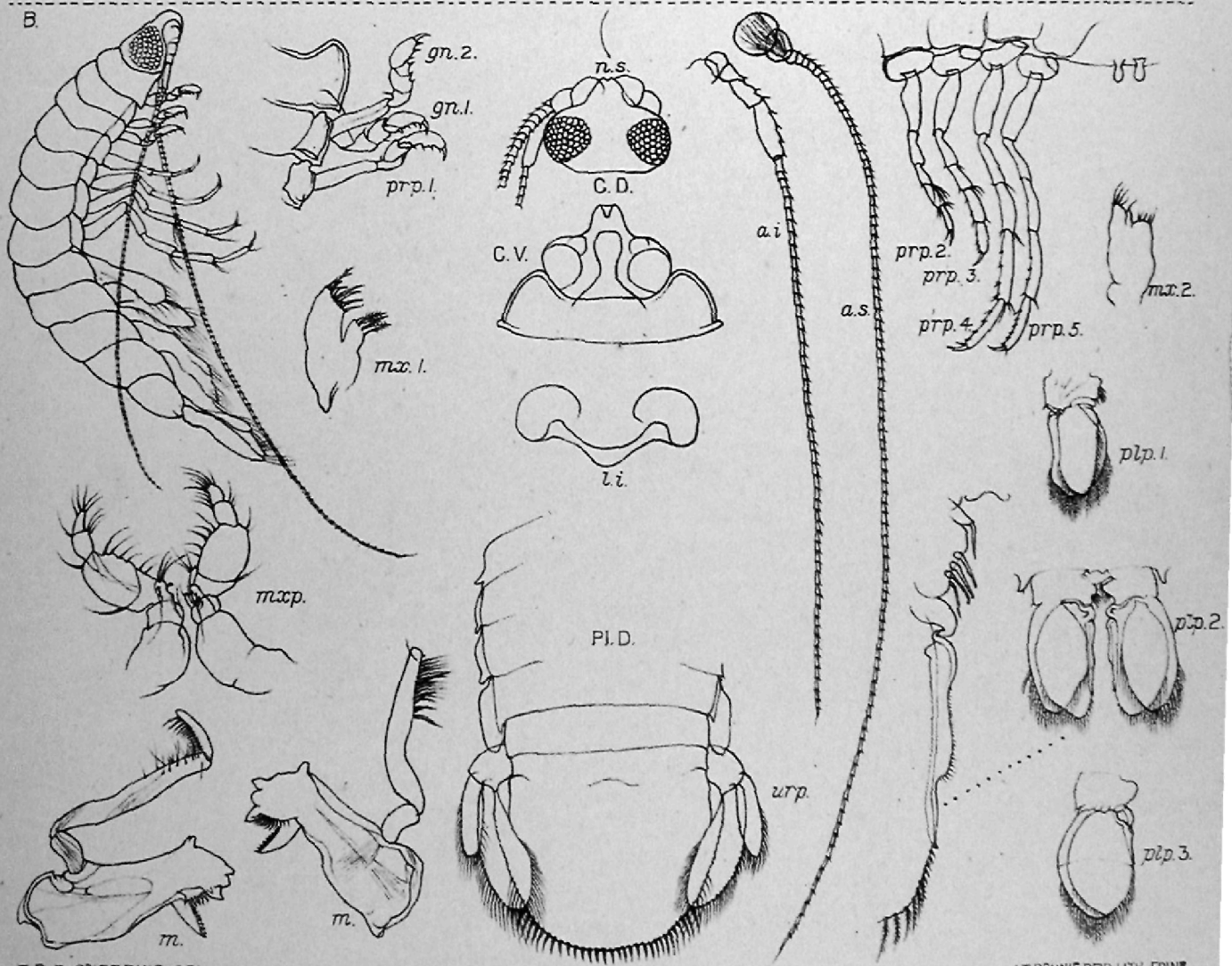
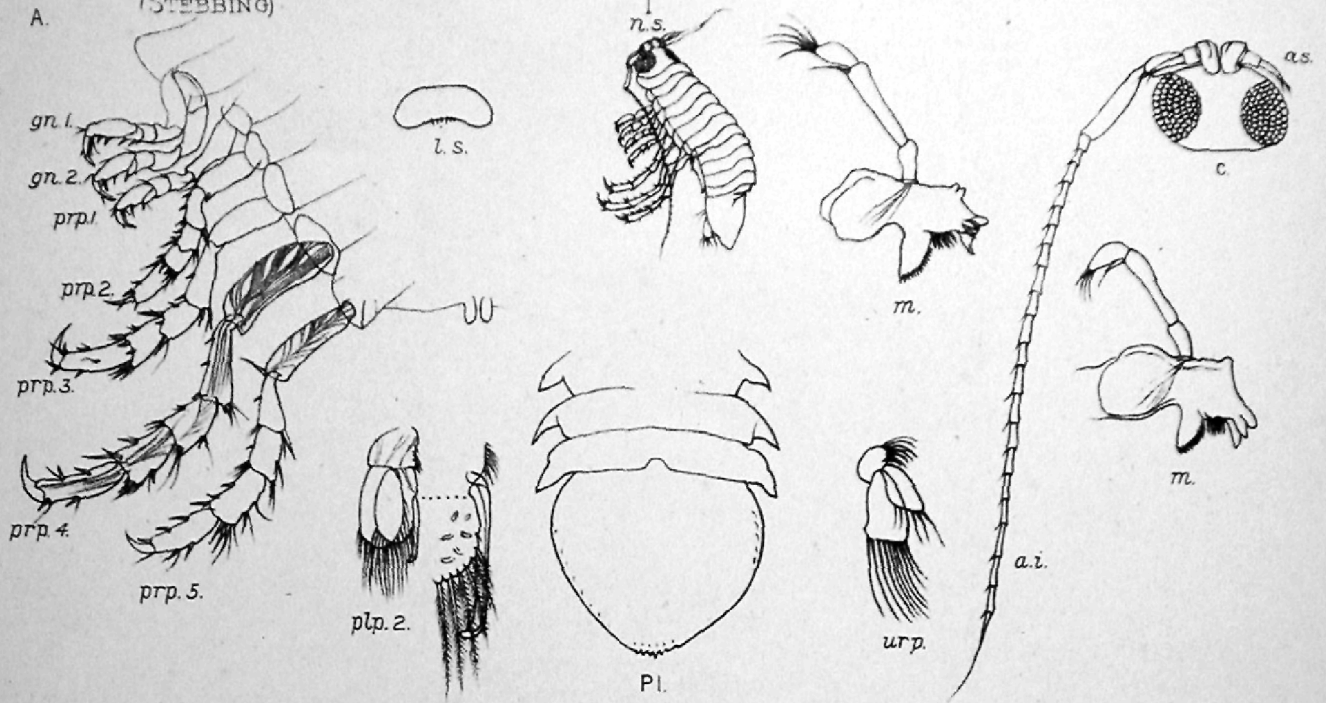
B. PARAPSEUDES HIRSUTUS n.s.



T. R. R. STEBBING DEL.

J. T. RENNIE REID, LITH. EDIN.

A. CALATHURA SLADENI, n. sp. B. APANTHURA XENOCHEIR, n. sp.



T. R. STEBBING DEL.

J. T. PENNIE REED LITH. EDIN.

A. EURYDICE HUMILIS n. sp.

B. PONTOGELOS ASELGOKEROS. n. sp.