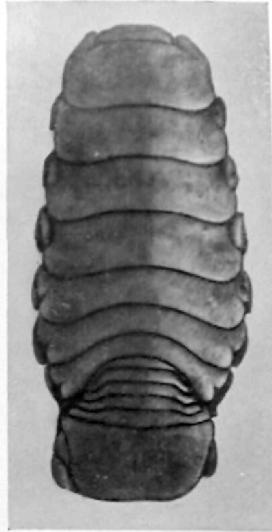




I



II



V



VI



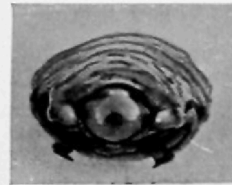
III



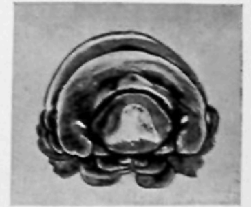
IV



VII



VIII



IX



X



XI



XII



XIII



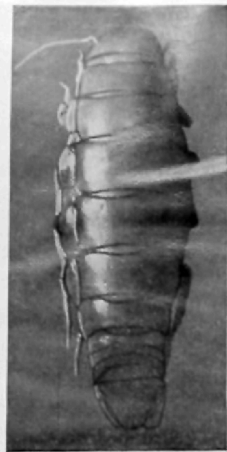
XIV

TAFEL XI.

- Fig. XV. *Livoneca intermedia* nov. spec., ♀.
Fig. XVI. id. von der linken Seite.
Fig. XVII. *Corallana glabra* nov. spec.
Fig. XVIII. id. von der linken Seite.
Fig. XIX. *Orcilana hanseni* nov. spec., ♂.
Fig. XX. id. von der linken Seite.
Fig. XXI. *Aega weberi* nov. spec., ♂.
Fig. XXII. id. von der rechten Seite.
Fig. XXIII. id. mit Geweih.
Fig. XXIV. id. von der linken Seite.



XV



XVII



XVIII



XIX



XX



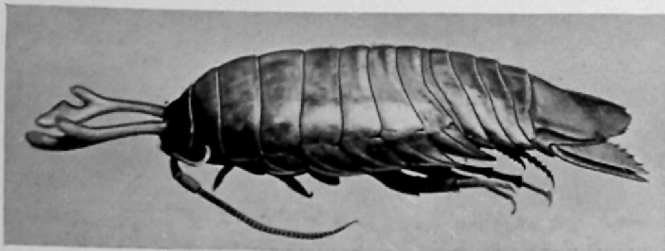
XXI



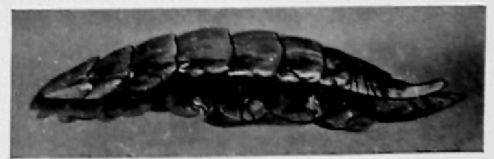
XXII



XXIII



XXIV



XVI

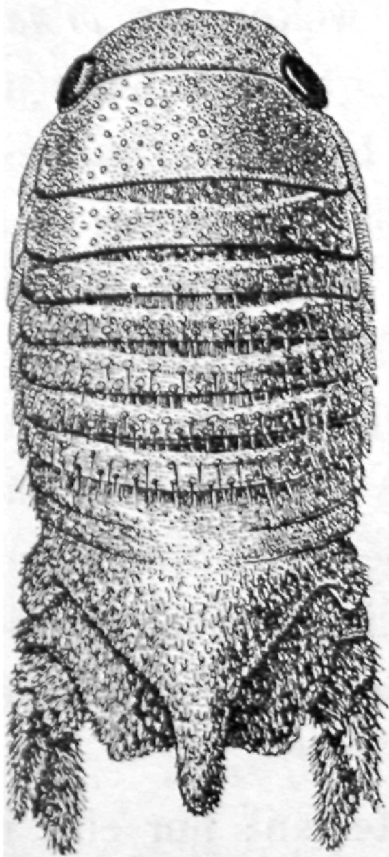


Fig. 92.
Ciliocia latreillei Leach,
♂, 5 ×.

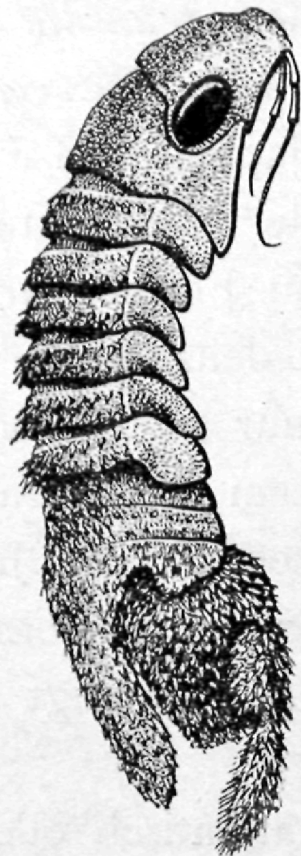


Fig. 93. *Ciliocia latreillei*
Leach, von der rechten Seite,
♂, 5 ×.

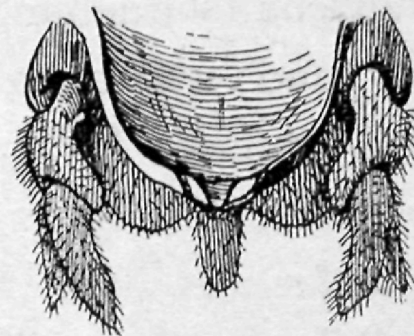


Fig. 94. *Ciliocia latreillei* Leach, Pleotelson von der ventralen Seite



Fig. 95.
Ciliocia latreillei Leach, ♀, 4 ×.



Fig. 96. *Ciliocia latreillei*
♀ von der rechten Seite

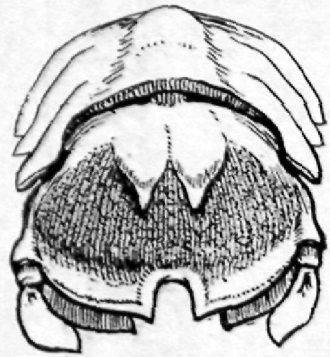


Fig. 105.

Cilicaopsis whiteleggei (Stebbing),
Metasoma des ♀, $\pm 14 \times$.



Fig. 106.

Cilicaopsis whiteleggei (Stebbing),
Epistom des ♂, $\pm 18 \times$.

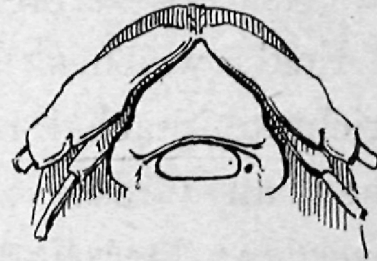


Fig. 107.

Cilicaopsis whiteleggei (Stebbing),
Epistom des ♀, $\pm 18 \times$.



Fig. 108.

Cilicaopsis whiteleggei (Stebbing),
Maxilliped des ♀, $65 \times$.

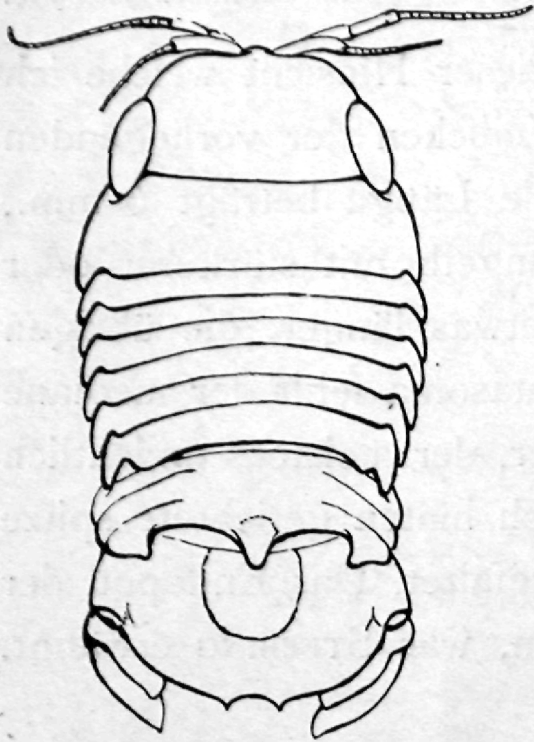


Fig. 109.
Cilicaeopsis laevis nov. spec.,
♂, 5 ×.

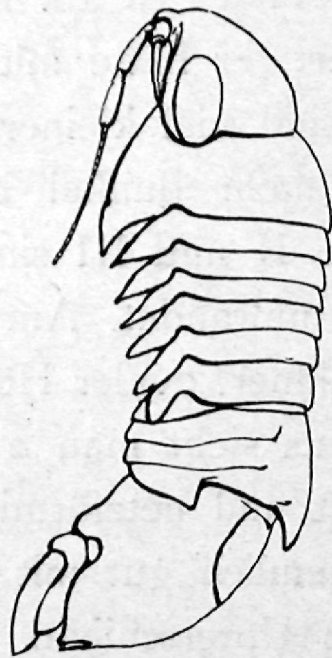


Fig. 110.
Cilicaeopsis laevis nov. spec.,
♂ von der linken Seite, 5 ×.

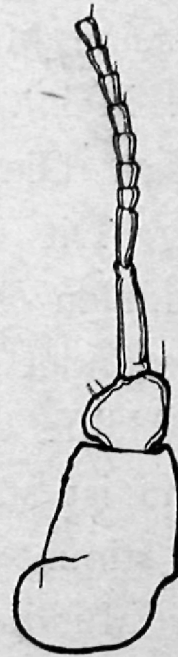


Fig. 111.
Cilicaeopsis laevis nov. spec.,
♂, Antennula, 16 ×.

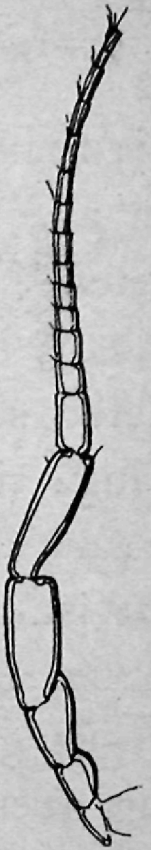


Fig. 112.
Cilicaeopsis laevis nov.
♂, Antenna, 16 ×.

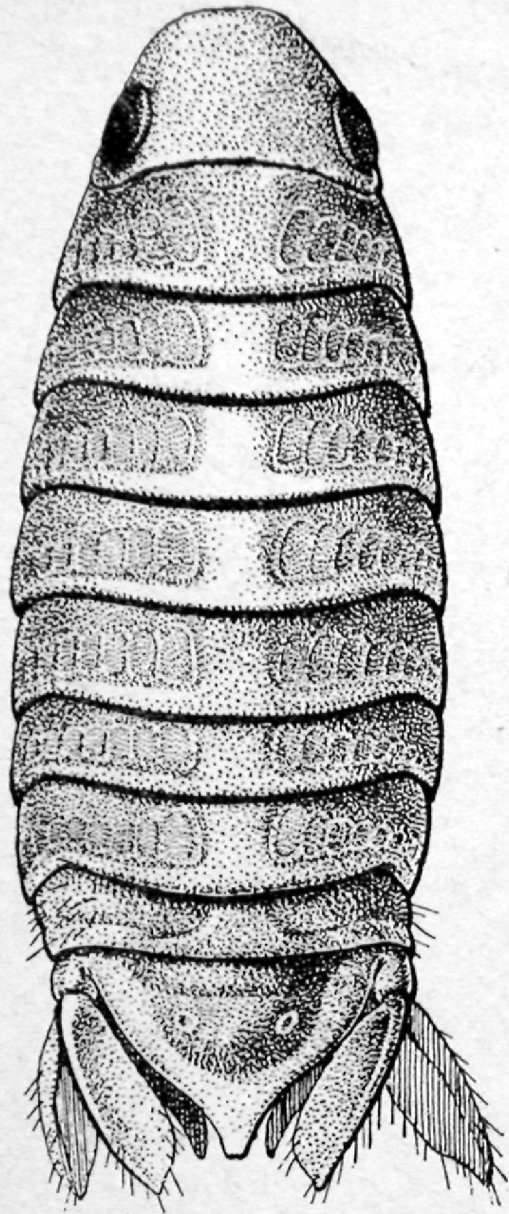


Fig. 117. *Circeis picta* nov. spec.,
♂, ± 10 ×.

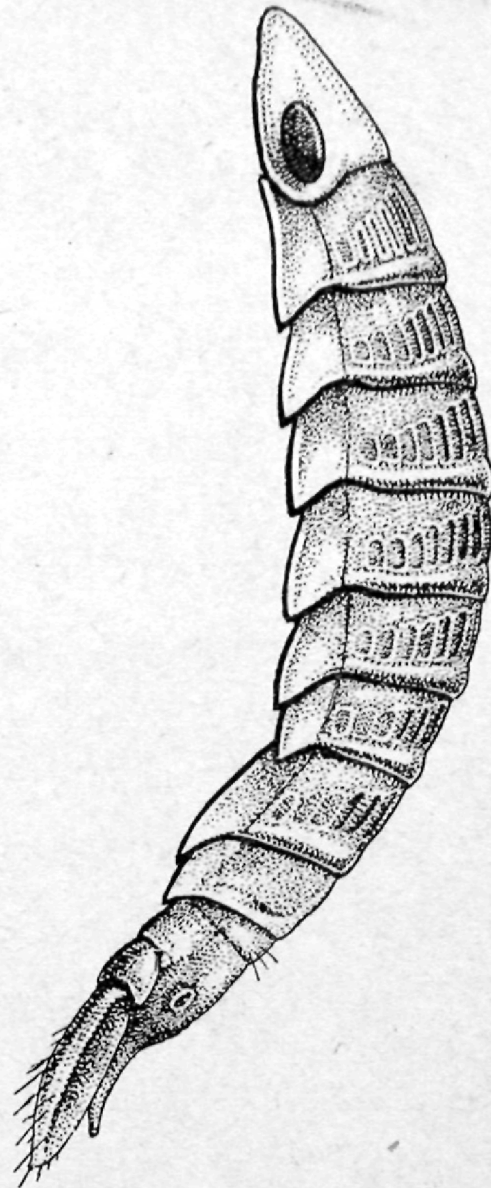


Fig. 118. *Circeis picta* nov. spec.,
♂ von der linken Seite, ± 10 ×.