



x1

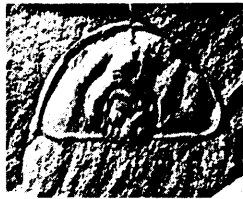


x1

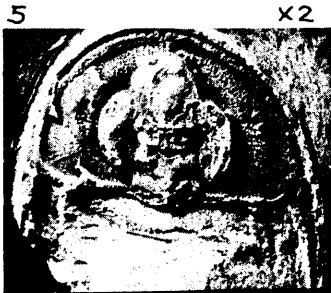


3

Olenellus



4

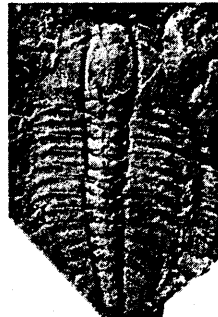


x2



6

Ogygopsis



7



8

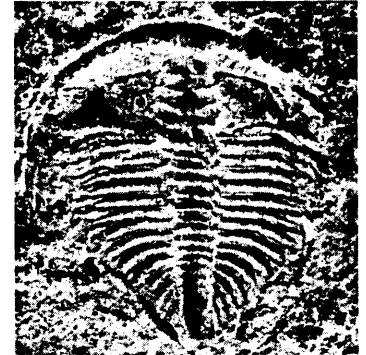
Edelsteinaspis



9



10



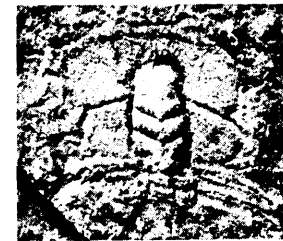
11



12



13



14



15

"Protolenid"

All x2

Bonnia-Olenellus Zone — *Ogygopsis* 1 faunule

PLATE 7

Bonnia-Olenellus Zone -- Ogygopsis 2 faunule

Saline Valley Formation

Ogygopsis

Figs. 1, 5 -- U.C.L.A. locality 6810 (Waucoba Mtn. quadrangle, Inyo Mtns., California); 2, 3, 4 -- U.C.L.A. locality 6851 (Paymaster Cyn., Esmeralda Co., Nevada).

Bonnia

Fig. 6 -- U.C.L.A. locality 6877 (Esmeralda Co., Nevada).

Olenellus

Fig. 9 -- U.C.L.A. locality 6851 (Paymaster Cyn., Esmeralda Co., Nevada).

Syspacephalus

Figs. 7, 8 -- U.C.L.A. locality 6851 (Paymaster Cyn., Esmeralda Co., Nevada).

Olenoides

Fig. 10 -- U.C.L.A. locality 6877 (Esmeralda Co., Nevada).

Zacanthopsis

Figs. 11 -- U.C.L.A. locality 6851 (Paymaster Cyn., Esmeralda Co., Nevada);
12 -- U.C.L.A. locality 6142 (Gold Point, Esmeralda Co., Nevada).

Goldfieldia

Fig. 13 -- U.C.L.A. locality 6142 (Gold Point, Esmeralda Co., Nevada).

Onchocephalus

Figs. 14 -- U.C.L.A. locality 6851 (Paymaster Cyn., Esmeralda Co., Nevada);
15, 16 -- U.C.L.A. locality 6854 (Magruder Mtn. quadrangle, Esmeralda Co., Nevada).