

the northside of U.S. Highway 6, in thin-bedded, platy, gray limestone, 300 feet north and 400 feet west of the southeast corner of Sec. 24, T. 11 N., R. 58 E., Currant Mountain quadrangle (U.S.G.S., 1957 ed.), Currant Creek, Nye County, Nevada (Figs. 3 and 4).



Figure 3. Currant Creek Gap, Nevada. Westward view. Lighter colored exposure at the base, on the right side of photograph is where *Sonoraspis californica* was found.

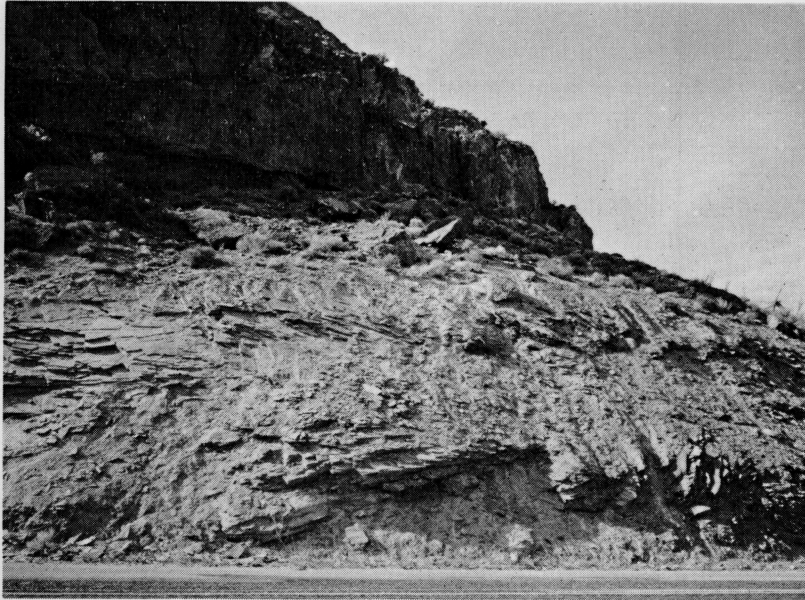


Figure 4. Close-up of the limestone outcrop.

ACKNOWLEDGMENTS

The writers wish to acknowledge the support given by the Dept. of Geology, University of California, Los Angeles for the field work and to Mrs. Opal L. Kurtz for the drafting.

LITERATURE CITED

- CLARK, CLIFTON W.
1921. Lower and Middle Cambrian formations of the Mohave Desert. *Univ. Calif. Pub. Geol. Sci. Bull.*, 13:1-7.
- HAZZARD, JOHN C., AND MASON, JOHN F.
1936. Middle Cambrian formations of the Providence and Marble Mountains, California. *Geol. Soc. America Bull.*, 47:229-240, 1 fig.
- LOCHMAN, CHRISTINA
1952. Trilobites, pp. 60-161 pls. 15-31, in Cooper, G. A., *et al.*, Cambrian stratigraphy and paleontology near Caborca, northwestern Sonora, Mexico. *Smithson. Misc. Coll.*, 119:(1):184, 31 pls.
- McKEE, EDWIN D.
1945. Stratigraphy and ecology of the Grand Canyon Cambrian, pp. 1-168, pls. 1-15, in McKee, E. D. and Resser, C. E. Cambrian history of the Grand Canyon region. *Carnegie Inst. Washington Pub.* 563, 232 pp., 27 pls.
1947. Paleozoic seaways in western Arizona. *Amer. Assoc. Petroleum Geol. Bull.*, 31:282-292.
- MOORE, RAYMOND C., *et al.*
1959. *Treatise on invertebrate paleontology*, Part O, Arthropoda. Geol. Soc. Amer., 560 pp., 415 figs.
- PALMER, ALLISON R.
1954. An appraisal of the Great Basin Middle Cambrian trilobites described before 1900. *Geol. Surv. Prof. Paper* 264-D, pp. 55-85, pls. 13-17.
- POULSEN, CHR.
1927. The Cambrian, Ozarkian and Canadian faunas of northwest Greenland. *Meddelelser om Gronland*, 70:233-348, pls. 14-21.
- RASETTI, FRANCO
1951. Middle Cambrian stratigraphy and faunas of the Canadian Rocky Mountains, *Smithson. Misc. Coll.*, 116:(5):1-277, 34 pls.
- SCHUCHERT, CHARLES
1910. Paleogeography of North America. *Geol. Soc. Amer. Bull.*, 20:427-606, pls. 46-101.
- STOYANOW, ALEXANDER
1936. Correlation of Arizona Paleozoic formations. *Geol. Soc. Amer. Bull.*, 47:459-540, 1 pl., 5 figs.
1942. Paleozoic paleogeography of Arizona. *Geol. Soc. Amer. Bull.*, 53:1255-1282, 5 pls., 3 figs.
1948. Some problems of Mississippian stratigraphy in southwestern United States. *Jour. Geology*, 56:313-326.

1952. The original collection of Cambrian trilobites from Sonora, pp. 49-59, pl. 14, in Cooper, G. A., *et al.*, Cambrian stratigraphy and paleontology near Caborca, northwestern Mexico. *Smithson. Misc. Coll.*, 119:(1):7-184, 31 pls.
1958. *Sonoraspis* and *Albertella* in the Inyo Mountains, California. *Geol. Soc. Amer. Bull.* 69:347-352, 1 pl.
- STOYANOW, ALEXANDER, AND SUSUKI, TAKEO
1955. Discovery of *Sonoraspis* in southern California. *Geol. Soc. Amer. Bull.*, 66:467-470, 2 pls.
- WALCOTT, CHARLES D.
1924. Cambrian geology and paleontology. Cambrian and lower Ozarkian trilobites. *Smithson Misc. Coll.*, 75(2):53-60, pls. 9-14.