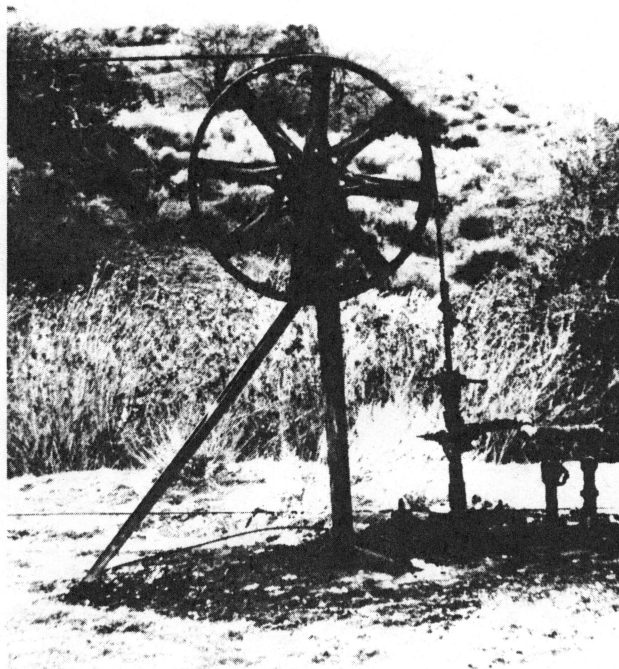


_____, 1917, Stratigraphic and faunal relations of the Martinez to the Chico and Tejon of southern California: California Academy of Sciences, Proceedings, 4th ser., v. 7, p. 41-124.

Weaver, C. E., and others, 1944, Correlation of the marine Cenozoic formations of western North America: Geological Society of America, Bulletin, v. 55, p. 569-598.



A turn-of-the century oil-well pump, used until recently in the Marr Ranch part of the Simi Oil Field. Photograph by R. L. Squires.