

Richard L. Squires and David R. White  
Department of Geological Sciences  
California State University  
Northridge, California 91330

## INTRODUCTION

The intent of this paper is to bring attention to common megafossils found in the Pliocene lower Saugus. Published illustrations of the megafauna are essentially lacking. Previous studies of the lower Saugus in the northern Simi Valley area have not dealt specifically with the megafossils. This preliminary paper is not intended to be a detailed taxonomic study. Rather it is a means of presenting illustrations of the most abundant megafossils found in the lower Saugus. White (this volume) gives sedimentological and stratigraphic data as well as an environmental analysis of this unit. The repository for the figured specimens is at the University of California, Los Angeles, Department of Earth and Space Sciences (UCLA). We wish to thank Takeo Susuki for his helpful comments on the megafauna identifications.

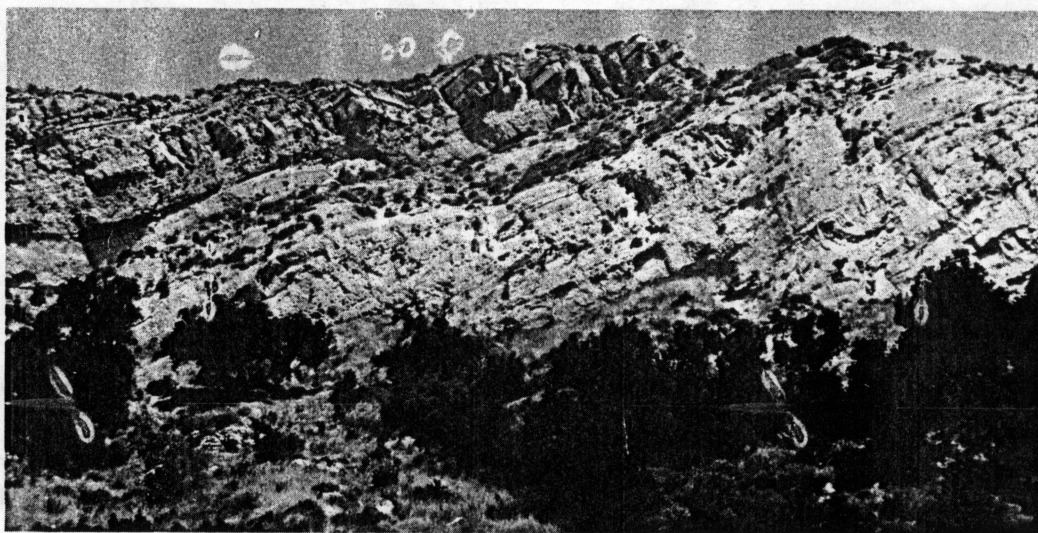
## LOCALITIES

CSUN 725. At 1550 ft elevation, exposed in an active quarry cut, 2610 ft north and 2650 ft east of the SW corner of section 24, T. 3 N., R. 18 W., Santa Susana 7.5-minute Quadrangle, California, 1951, photorevised 1969. = LACMIP locality 29227

CSUN 739. At 1925 ft elevation, exposed on ridge, 3425 east and 600 ft south of the NW corner of section 29, T. 3 N., R. 17 W., Santa Susana 7.5-minute Quadrangle, California, 1951, photorevised 1969. VP

CSUN 756. At 2000 ft elevation, exposed south of ridge crest, 180 ft north and 2600 ft east of the SW corner of section 30, T. 3 N., R. 17 W., Oat Mountain 7.5-minute quadrangle, California, 1952, photorevised 1969. = LACMIP loc. 16172

CSUN 757. At 1750 ft elevation, along the east side of the stream bank, 100 ft north and 2300 ft east of the SW corner of section 30, T. 3 N., R. 17 W., Oat Mountain 7.5-minute quadrangle, California, 1952, photorevised 1969. = LACMIP locality 16171



Lower Saugus outcrop in Las Llajas Canyon. Photograph by D. R. White.

Plate 1. Common megafossils of the lower Saugus, northern Simi Valley area.

1. Chlamys (Chlamys) opuntia (Dall, 1848), exterior of right valve, hypotype UCLA 59403, CSUN loc. 757, height 55 mm, length 66 mm.
2. Pecten (Pecten) bellus (Conrad, 1856), exterior of right valve, hypotype UCLA 59404, CSUN loc. 725, height 55 mm, length 66 mm.
3. Pecten (Patinopecten) healevi sanclementensis Susuki and Stadum, 1978, exterior of left valve, hypotype UCLA 59405, CSUN loc. 725, height 156 mm, length 160 mm.
4. Ostera vespertina Conrad, 1854, exterior of left (lower) valve, hypotype UCLA 59406, CSUN loc. 757, height 86 mm, length 67 mm.
5. Pododesmus (Monia) macrochisma (Deshayes, 1839), exterior of left (upper) valve, hypotype UCLA 59407, CSUN loc. 725, height 36 mm, 38 mm.
6. Lucina (Lucinoma) annulata Reeve, 1850, exterior of left valve, hypotype UCLA 59408, CSUN loc. 757, height 52 mm, length 51 mm.
7. Cyclocardia occidentalis (Conrad, 1855), exterior of left valve, hypotype UCLA 59409, CSUN loc. 725, height 18 mm, length 17 mm.
8. Saxidomus nuttalli Conrad, 1837, exterior of left valve, hypotype UCLA 59410, CSUN loc. 725, height 71 mm, length 98 mm.
9. Turritella cooperi Carpenter, 1864, apertural view, hypotype UCLA 59411, CSUN loc. 725, height 33 mm.
10. Crepidula princeps Conrad, 1856, abapertural view, hypotype UCLA 59412, CSUN loc. 725, longitude 90 mm.
11. Terebratalia hemphilli Dall, 1902, brachial valve, hypotype UCLA 59413, CSUN loc. 757, length 58 mm, width 60 mm.
12. Terebratalia transversa caurina Gould, 1850, brachial valve, hypotype UCLA 59414, CSUN loc. 756, length 15 mm, width 21 mm.
13. Dendraster ashleyi (Arnold, 1907), aboral view, hypotype UCLA 59415, CSUN loc. 756, length 59 mm.
14. Carcharodon sp., inner side view, hypotype UCLA 59416, CSUN loc. 739, length (including root) 60 mm.

Plate I

