

Subprionocyclus cf. *S. neptuni* (GEINITZ, 1849)
Late Turonian
Ladd Formation, Baker Canyon Member
UCLA loc. 2325

LATE CRETACEOUS MEGAFOSSIL LOCALITY MAP, NORTHERN SANTA ANA MOUNTAINS, CALIFORNIA

Louella R. Saul
 Department of Earth and Space Sciences
 University of California, Los Angeles
 Los Angeles, California 90024

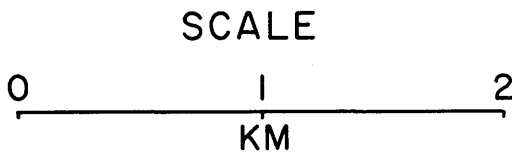
David J. Bottjer
 Department of Geological Sciences
 University of Southern California
 Los Angeles, California 90007

Localities of megafossil samples listed in Saul (this volume) and Sundberg (1980; this volume). Maps compiled from U.S. Geological Survey Black Star Canyon, El Toro, and Santiago Peak quadrangles, as shown in index below. Contour interval for El Toro and Black Star Canyon quadrangles is 20 feet, and for

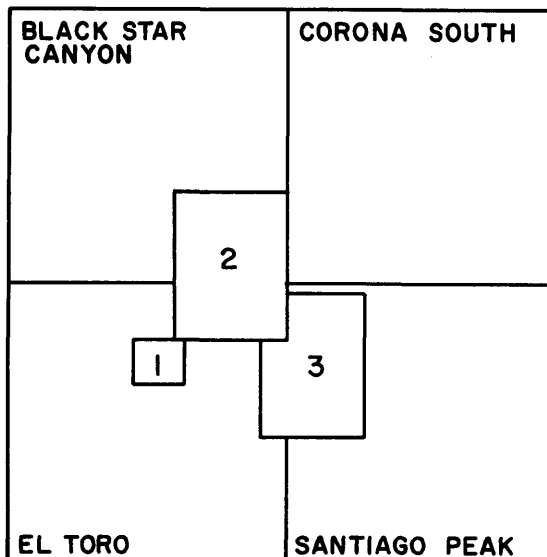
Santiago Peak quadrangle is 40 feet.

REFERENCES CITED

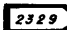
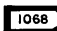


Sundberg, F. A., 1980, Late Cretaceous paleoecology of the Holz Shale, Orange County, California: Jour. Paleontology, v. 54, p. 840-857.



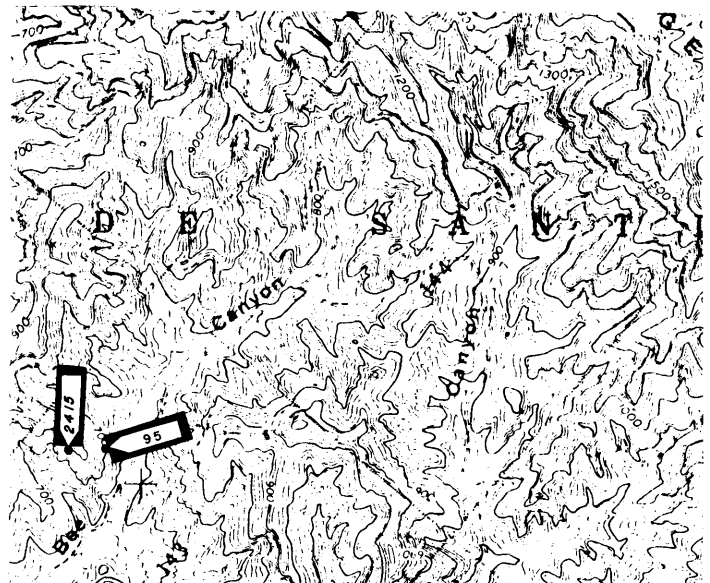
MAP INDEX



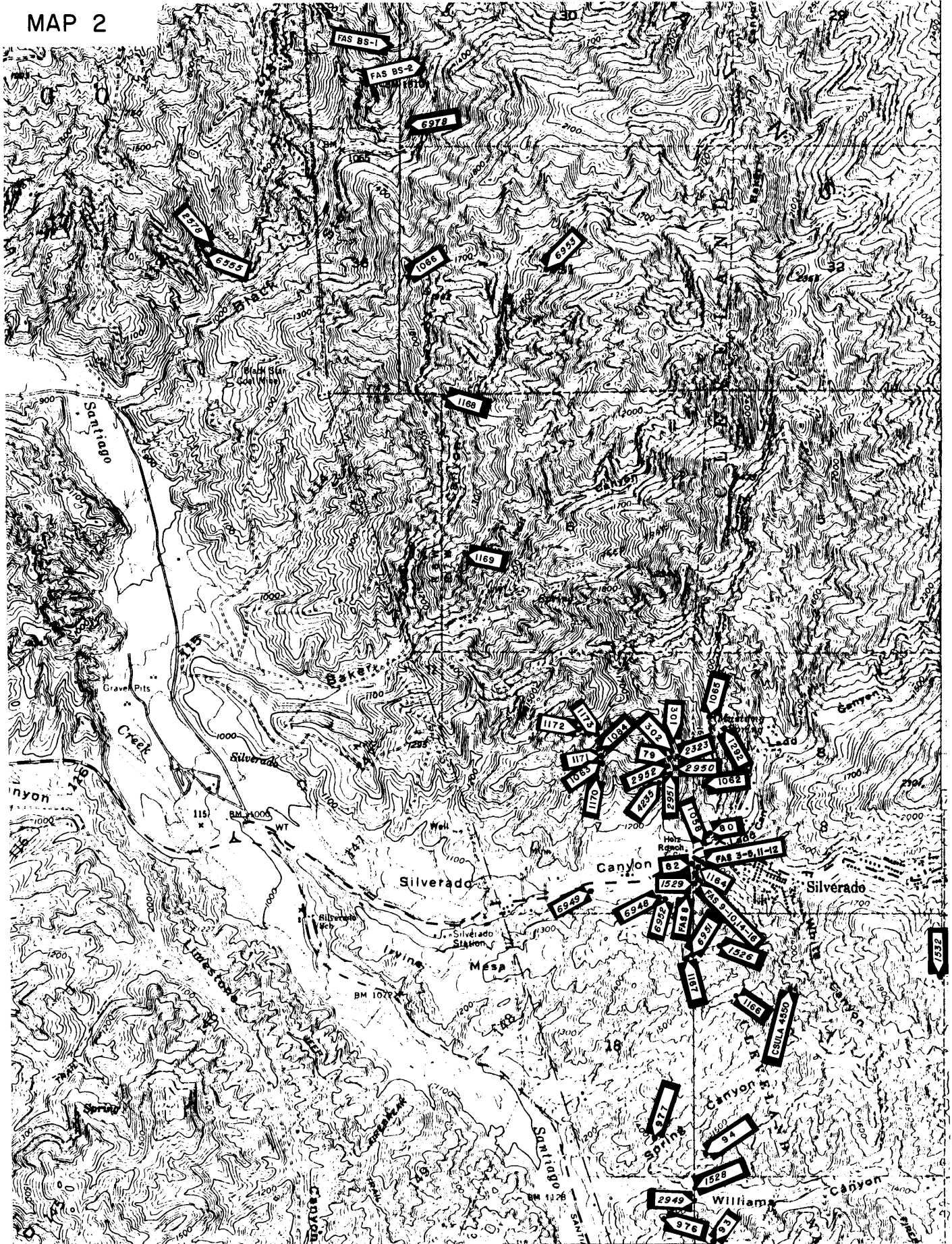
LOCALITY LEGEND

-  • Univ. California, Los Angeles
-  • California Inst. Technology
-  • Sundberg
-  • California State Univ., Los Angeles

MAP I



MAP 2



MAP 3

