

PLATE 9



1



2



3



4



5



6



7



8



9



10



11



12



13



14



15

PLATE 10

All figures are natural size except as otherwise stated.

FIGURE

- 1-2. *Turricula (Pleurofusua) akhtari* Iqbal, X2, figure 1, apertural view, figure 2, abapertural view of the same specimen, section 'A', Sinjdi, holotype.
- 3-4. *Volutocorbis harnaiensis* Cox, figure 3, apertural view, fig. 4, abapertural view of the same specimen, section 'C', Shahrig, specimen.
- 5-6. *Vicarya liaqati* Iqbal, figure 5, apertural view, figure 6, abapertural view of the same, section 'C', Shahrig, holotype.
- 7-8. *Cerithium sharighense* Iqbal, fig. 7, apertural view, fig 8, abapertural view of the same, section 'C', Shahrig, holotype.
- 9-10. *Potamides durramus* Iqbal, figure 9, apertural view, fig. 10, abapertural view of the same specimen, section 'C', Shahrig, holotype.
- 11-12. *Cerithium kalatense* Iqbal, figure 11, apertural view, fig. 12, abapertural view of the same, section 'C', Shahrig, holotype.
- 13-14 *Ostrea pseudopunica* Eames, figure 13, exterior left valve, fig. 14, exterior right valve of the same & 17. exterior left valve of another specimen, section 'A', Sinjdi.
- 15-16. *Cirsotrema jinnahi* Iqbal, fig. 15, apertural view, fig. 16, abapertural view of the same, section 'C', Shahrig, holotype.
18. *Corbula (Bicorbula) lunica* Iqbal, exterior left valve, section 'C', Shahrig, holotype.
- 19-20. *Corbicula tangica* Iqbal, fig. 19, exterior left valve, fig. 20, dorsal view L/R valves, section 'C', Shahrig, holotype.

PLATE 10



1



2



3



4



5



6



7



8



9



10



11



12



13



14



15



16



17



18



19



20

PLATE 11

All figures are natural size except as otherwise stated.

FIGURE

- 1-4. *Amaurellina noettingi* Cox, fig. 1, abapertural view, section 'A'; Sinjdi, figs. 2 & 4, abapertural views of two different specimens, fig. 3, apertural view of another specimen, section 'C', Shahrig, specimens. A609 A611
- 5-6. *Bezantonia heroni* Iqbal, fig. 5, apertural view, fig. 6, abapertural view of the same, section 'C', Shahrig, holotype.
- 7-10. *Pirena (Pseudobellardia) delphinus* (Oppenheim), fig. 7, apertural view, fig. 8, abapertural view of the same specimen, fig. 9, apertural view, fig. 10, abapertural view of another specimen, section 'C', Shahrig, specimens.
- 11-12. *Pyrazus khani* Iqbal, fig. 11, apertural view, fig. 12, abapertural view of the same, section 'C', Shahrig, holotype.



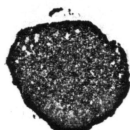
PLATE II



1



2



3



4



5



6



7



8



9



10



11



12

PLATE 12

All figures are natural size except as otherwise stated.

FIGURE

- 1-2. *Pirena (Pseudobellardia) delphinus* (Openheim), fig. 1, apertural view, fig. 2, abapertural view of the same specimen, section 'C', Shahrig, specimens.
- 3-4. *Batillaria ? brohica* Iqbal, fig. 3, apertural view, fig. 4, abapertural view of the same specimen, section 'A', Sinjdi, holotype.
- 5-10. *Ampullella nuttalli* Cox, fig. 5, apertural view, fig. 6, abapertural view of the same specimen; fig. 7, apertural view, fig. 8, abapertural view of another specimen; fig. 9, apertural view, fig. 10, abapertural view of another specimen; section 'C', Shahrig, specimens.
- 11-12. *Terebralla pathani* Iqbal, fig. 11, apertural view, fig. 12, abapertural view of the same, section 'C', Shahrig, holotype.