

# Eocene deep-sea communities in localized limestones formed by subduction-related methane seeps, southwestern Washington

James L. Goedert

15207 84th Avenue Court NW, Gig Harbor, Washington 98335  
and Section of Vertebrate Paleontology, Natural History Museum of Los Angeles County  
Los Angeles, California 90007

Richard L. Squires

Department of Geological Sciences, California State University  
Northridge, California 91330

## ABSTRACT

Densely populated communities of soft-bottom-dwelling taxa similar to those found today along subduction zones off the coasts of Japan and Oregon have been discovered in very localized deep-water limestones of late middle to late Eocene age along the southwestern margin of Washington. Subduction was prevalent in this area during this time, and compressive forces squeezed subsurface methane-rich waters onto the ocean floor, where opportunistic bivalves (especially *Modiolus*, *Calyplogena*, and *Thyasira*), vestimentiferan? tube worms, serpulid tube worms, siliceous sponges, very small limpets, trochid and turbinid archaeogastropods, and other macrobenthos colonized. These assemblages are the earliest recorded biologic communities formed in response to methane seeps in subduction zones.

## INTRODUCTION

The western margin of Washington has been the site of active subduction since early Eocene time (Armentrout, 1987). Rocks of late middle to late Eocene age in southwestern Washington represent deposits in a fore-arc basin and are mostly deep-marine tuffaceous siltstone or muddy siltstone virtually barren of macrofossils (Rau, 1986; Wells, 1989). The presence of three localized limestone deposits enclosed within these siltstones and containing high numbers of articulated specimens of soft-bottom-dwelling bivalves is, therefore, very unusual. Previous workers (Glover, 1936; Hodge, 1938; Danner, 1966) briefly described the geology and chemical makeup of the limestones, but they did not do any detailed paleontological investigations.

We have discovered that each limestone has its own distinct community of organisms. Modiolid bivalves are always present with either vesicomid bivalves or thyasirid bivalves. Worm tubes, siliceous sponges, very small limpets, and trochid and turbinid archaeogastropods may also be present. Hickman (1984) recognized six Cenozoic deep-water mollusk communities of the marginal northeastern Pacific, but these three limestone communities are different in terms of taxonomic composition, much greater abundance of specimens, and association with limestone.

Here we describe the taxonomic composition of the limestones and discuss their environment of deposition in conjunction with recent discoveries of modern biologic communities along subduction zones in the Pacific Ocean.

The limestones are referred to as the Humptulips, Bear River, and Menlo deposits (Fig. 1). The abbreviation LACMIP (used for catalogue and locality numbers) stands for the Natural History Museum of Los Angeles County, Invertebrate Paleontology section.

## LITHOLOGY, FOSSIL CONTENT, AND AGE OF THE LIMESTONES Shared Characteristics

All three limestone deposits are now covered with slope wash and dense vegetation. Each limestone is enclosed within deep-water siltstone, and contacts with these surrounding strata are covered.

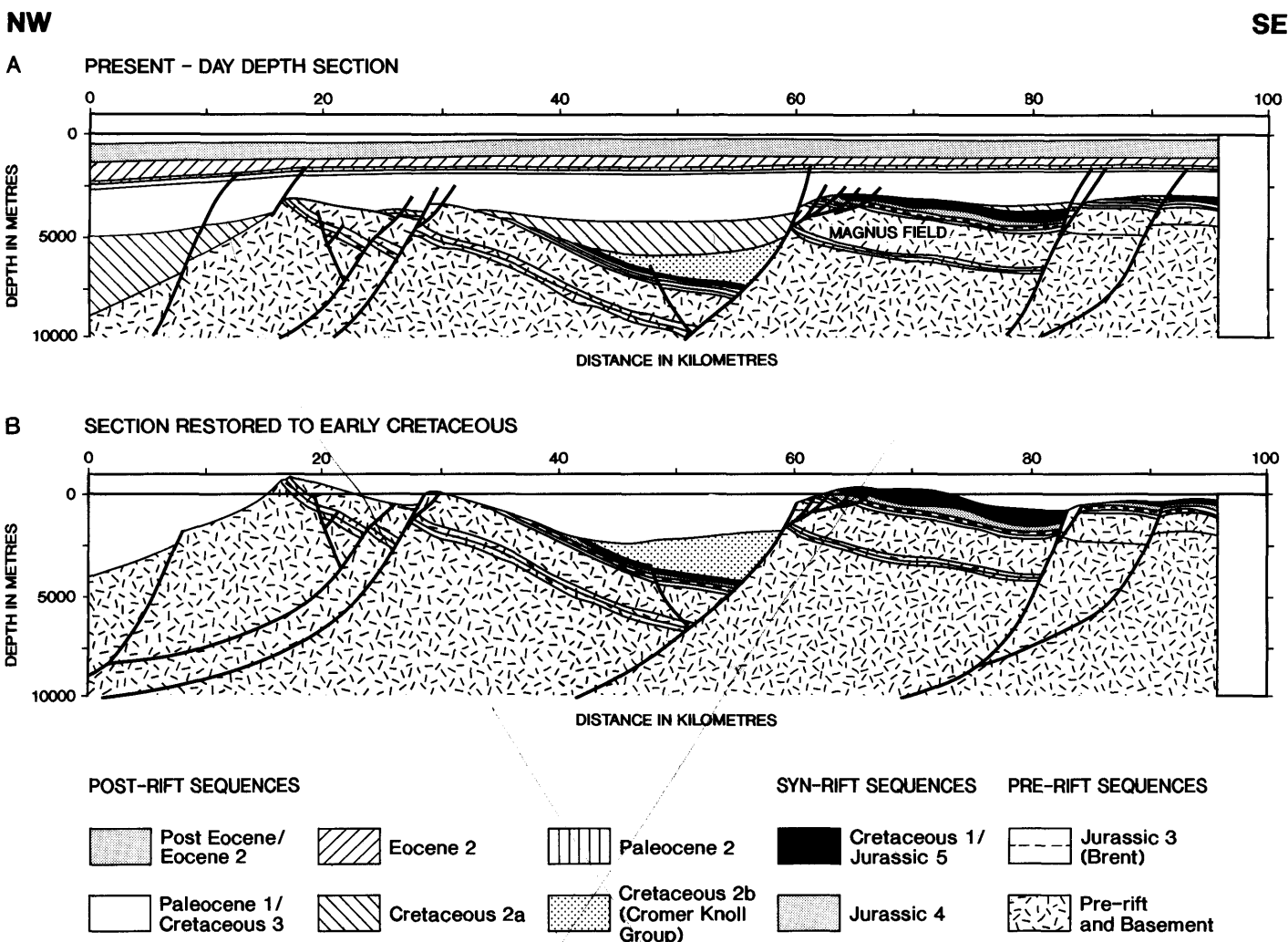
The limestone consists of lime mud surrounding unabraded macrofossils. A checklist of macrofossils and their abundance in each deposit is given in Table 1. New species are being described and named by us in a separate paper. All of the bivalves in each deposit are articulated and randomly oriented in all planes. The limestones emit a strong petroliferous odor when broken, and their chemical compositions (Danner, 1966) are very similar.

## Humptulips Deposit

The Humptulips deposit is enclosed within siltstone of the Humptulips Formation, which has been assigned to the foraminiferal Narizian Stage of late middle to late Eocene age (Rau, 1986). The deposit is cut by an abandoned meander on the East Fork of the Humptulips River in the northwest part of sec. 4, T. 20 N., R. 9 W., Quinault Lake 15-minute quadrangle, Grays Harbor County. The locality is equivalent to locality LACMIP 12385. Danner (1966) reported the deposit to be 15 m thick, 30 m long, and 15 m wide.

Bulk collecting of about 20 kg revealed a growth series of the bivalve *Thyasira* (Fig. 2a) with individuals up to 6 cm in height. Specimens are usually in clusters of about five or six. There are two types of very small, high-profiled limpets. A patelliform type (Figs. 2b, 2c) has an imperforate apex, and a fissurellid? type (Figs. 2d, 2e) seems to have a perforated apex. Specimens of the turbinid archaeogastropod *Homalopoma?* sp. A (Fig. 2f) show a growth series. Specimens of a naticid gastropod (Fig. 2g) are minute. The scaphopod specimen, *Dentalium* sp. (Fig. 2h), is broken but unabraded.

Serpulid worm tubes are present in the limestone as either solitary specimens (Fig. 2i) or as colonies of white-shelled calcareous circular tubes (Fig. 2j) up to 1.5 mm in diameter.



**Figure 3. A: Present-day depth section across Shetland Trough. Magnus oilfield is indicated at crest of rotated fault block. B: Section as above, restored to Early Cretaceous time when sediments now forming Cromer Knoll Group were being deposited. Note subaerial exposure of Magnus Sandstone Member.**

Bjorlykke, K., Aagaard, P., Dypvik, H., Hasting, D., and Harper, A.S., 1986, Diagenesis and reservoir properties of Jurassic sandstones from the Haltenbanken area, offshore mid-Norway, in Spencer, A.M., et al., eds., *Habitat of hydrocarbons on the Norwegian continental shelf*: London, Graham and Trotman, p. 278-286.

De'ath, N.G., and Schuyleman, S.F., 1981, The geology of the Magnus oilfield, in Illing, L.V., and Hobson, G.D., eds., *Petroleum geology of the continental shelf of north-west Europe*: London, Heyden and Son, p. 342-351.

Edmunds, W.M., Bath, A.H., and Miles, D.L., 1982, Hydrochemical evolution of the East Midlands Triassic sandstone aquifer, England: *Geochimica et Cosmochimica Acta*, v. 46, p. 2069-2081.

Fitzpatrick, E.A., 1982, Soils: Their formation, classification and distribution: London, Longman, 384 p.

McKenzie, D.P., 1978, Some remarks on the development of sedimentary basins: *Earth and Planetary Science Letters*, v. 40, p. 25-32.

Parry, C.C., Whitely, P.K.J., and Simpson, R.D.H., 1981, Integration of palynological and sedimentological methods in facies analysis of the Brent Formation, in Illing, L.V., and Hobson, G.D.,

eds., *Petroleum geology of the continental shelf of north-west Europe*: London, Heyden and Son, p. 205-215.

Parsons, B., and Sclater, J.G., 1977, An analysis of the variation of ocean floor bathymetry and heat flow with age: *Journal of Geophysical Research*, v. 82, p. 803-827.

Rainey, S.C.R., 1987, Sedimentology, diagenesis and geochemistry of the Magnus Sandstone Member, northern North Sea [Ph.D. thesis]: Edinburgh, Scotland, University of Edinburgh, 403 p.

Royden, L., and Keen, C.E., 1980, Rifting process and thermal evolution of the continental margin of eastern Canada determined from subsidence curves: *Earth and Planetary Science Letters*, v. 51, p. 346-361.

Sawyer, S.D., Hsui, A.T., and Toksoz, M.N., 1987, Extensional subsidence and thermal evolution of the Los Angeles Basin: A two-dimensional model: *Tectonophysics*, v. 133, p. 15-32.

Serra, O., Baldwin, J., and Quirien, J., 1980, Theory, interpretation and practical applications of natural gamma ray spectroscopy, in *Society of Professional Well Log Analysts Annual Symposium*: Houston, Society of Professional Well Log Analysts, Paper Q, p. 1-30.

Shanmugam, G., and Higgins, J.B., 1988, Porosity enhancement from chert dissolution beneath Neocomian unconformity: Ivishak Formation, North Slope, Alaska: *American Association of Petroleum Geologists Bulletin*, v. 72, p. 523-535.

Steckler, M.S., and Watts, A.B., 1981, Subsidence history and tectonic evolution of Atlantic-type continental margins, in Scrutton, R.A., ed., *Dynamics of passive margins*: American Geophysical Union Geodynamics Series, v. 6, p. 184-196.

Summerhayes, C.P., 1986, Sea level curves based on seismic stratigraphy: Their chronostratigraphic significance: *Palaeogeography, Palaeoclimatology, Palaeoecology*, v. 57, p. 27-42.

Tardy, Y., 1971, Characterization of the principal weathering types by the geochemistry of waters from some European and African crystalline massifs: *Chemical Geology*, v. 7, p. 253-271.

Watts, A.B., Karner, G.D., and Steckler, M.S., 1982, Lithospheric flexure and the evolution of sedimentary basins: *Royal Society of London Philosophical Transactions, ser. A*, v. 305, p. 249-281.

Manuscript received March 29, 1990  
 Revised manuscript received June 28, 1990  
 Manuscript accepted July 18, 1990

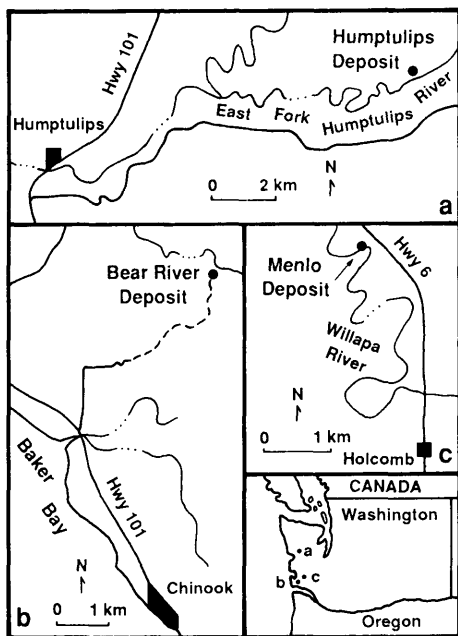


Figure 1. Location maps for three localized limestone deposits of Eocene age containing chemosynthetic communities related to subduction-related methane seeps, western Washington. a: Humptulips deposit. b: Bear River deposit. c: Menlo deposit.

Another type of tube (Figs. 2k, 2l), also in clusters, is circular, up to 5 mm in diameter, and 6 cm long and has an outer surface coincident with a black organic deposit. These tubes are most likely vestimentiferan worm tubes, and the black deposits are where the chitinous tube walls used to be. Some of the specimens are vertically oriented (Fig. 2l).

#### Bear River Deposit

The Bear River deposit is enclosed within deep-water siltstones mapped as being the siltstone of Cliff Point (Wells, 1989). The deposit is in an abandoned quarry on the south side of Bear River in SE $\frac{1}{4}$ SE $\frac{1}{4}$  sec. 20, T. 10 N., R. 10 W., Chinook 7.5-minute quadrangle, Pacific County. The locality is equivalent to locality LACMIP 5802. In 1954, during the last active quarrying of the limestone, it was reported to be 15 m thick, 68 m in length, and 38 m wide (Danner, 1966).

Rock samples and fossils used in this study were collected in bulk (about 50 kg) from boulders on the quarry floor. The mytilid bivalve *Modiolus* forms dense concentrations (Figs. 2m, 2n) of juvenile to adult specimens. The vesicomid bivalve *Calypptogena* (Figs. 2o, 2p) is less abundant and forms less dense concentrations of late juvenile to adult specimens as much as 10 cm long. Specimens of the small trochid archaeogastropod *Margarites* (*Pupilla*-

*ria*) (Fig. 2q) show a growth series. The specimen of *Homalopoma?* sp. B (Fig. 2r) is broken but unabraded. Although only three specimens of the solemyid bivalve *Acharax* were found, they are uncommonly large. The largest specimen (Fig. 2s) is 13 cm long, including a 1-cm-long imprint of the fragile horny periostracum that extends beyond the anterior margin of the shell. Specimens of a pitarid bivalve show a growth series; some individuals are as much as 9 cm long (Fig. 2t). Specimens of the siliceous sponge *Aphrocallistes* (Fig. 2u) are, as noted by Rigby and Jenkins (1983), three-dimensional branching tubular forms.

Analyses of calcareous nannofossils and benthic foraminifera done during this study indicate a late Eocene age for a *Modiolus*-bearing thin siltstone bed enclosed by limestone and uncovered in a hand-dug trench in about the middle of the limestone quarry. The siltstone contained the calcareous nannofossil *Isthmolithus recurvus*, which has an extremely short range and allows the zonal assignment to the late Eocene CP15b Zone of Okada and Bukry (1980). The siltstone also contained the benthic foraminifer *Uvigerina cocoaensis*, which is diagnostic of the late Eocene part of the Refugian Stage (Rau, 1981). The age assignment for the Bear River limestone deposit indicates temporal correlation to the lower part of the widespread Lincoln Creek Formation of southwestern Washington, the age of which has been discussed by Prothero and Armentrout (1985). See Armentrout et al. (1983) for a chart showing the regional stratigraphic correlation of the Lincoln Creek Formation.

#### Menlo Deposit

The Menlo deposit is enclosed within siltstone of the Lincoln Creek Formation (Wagner, 1967). W. W. Rau (1990, personal commun.), on the basis of benthic foraminifera, has assigned this siltstone to the foraminiferal upper Refugian Stage (late Eocene). The deposit is on the north bank of the Willapa River adjacent to the Chehalis-Raymond highway, in SW $\frac{1}{4}$ NW $\frac{1}{4}$  sec. 24, T. 13 N., R. 8 W., Raymond 7.5-minute quadrangle, Pacific County. The locality is equivalent to locality LACMIP 12326.

Danner (1966) reported the deposit to be 2 m thick, 7.5 m long, and 3 m wide. Farther along the river are 20 or more small, thin, lenticular beds of limestone separated by shale.

In the Menlo deposit, *Modiolus* forms less dense concentrations than those found in the Bear River deposit. About 2 kg of rock samples were collected for this study.

#### ENVIRONMENT

The presence of articulated, juvenile to adult bivalves, as well as the unabraded condition of

the bivalves, fragile worm tubes, siliceous sponges, and gastropods in the three limestone deposits indicate that the macrofossils have not undergone any kind of transport and are in situ communities. Although each community has a somewhat different taxonomic composition, they are all dominated by bivalves. They are very similar to modern-day assemblages associated with cool-fluid seepage at depths of about 2000 m in the subduction zone off the coast of Oregon (Suess et al., 1985; Kulm et al., 1986) and between 3800 and 6000 m at several locations along the landward slopes of the subduction-zone complex off the Pacific coast of Japan (Ohta and Laubier, 1987; Hashimoto et al., 1989). Surveys by submersible in these waters found localized colonies that typically consist of very dense aggregations of chitinous vestimentiferan and calcareous serpulid tube worms associated with *Calypptogena* and *Solemya* (a bivalve closely allied to *Acharax*). These soft-bottom colonies, which can be up to 30 m wide and 200 m long, are centered around cool-fluid seeps on the ocean floor where interstitial waters laden with methane and light hydrocarbons are discharged from underlying sediments. These subsurface sediments are being squeezed by tectonic forces associated with active subduction. The bivalves consume the methane and are sustained by symbiotic methane-oxidizing and/or sulfur-oxidizing chemoautotrophic bacteria that live in the gills of the bivalves. Like the Humptulips, Bear River, and Menlo communities, tax-

TABLE 1. CHECK LIST AND ABUNDANCE OF MACROFOSSILS IN SUBDUCTION-RELATED LIMESTONES IN SOUTHWESTERN WASHINGTON

| Species  | Hump-tulips | Bear Creek | Menlo |
|--|-------------|------------|-------|
| <i>Acharax</i> c.f. <i>A. dalli</i>                  | 1           | 3          | -     |
| <i>Modiolus</i> ( <i>M.</i> ) n. sp.                 | 32          | IN         | 15    |
| <i>Calypptogena</i> n. sp.                           | 3           | 60         | 2     |
| <i>Thyasira</i> ( <i>Conchocele</i> ) <i>folgeri</i> | 55          | -          | 1     |
| pitarid  | 9           | 3          | -     |
| Gastropods   |             |            |       |
| fissurellid? limpet                                  | 12          | -          | -     |
| patelliform limpet                                   | 14          | 1          | -     |
| <i>Margarites</i> ( <i>Pupillaria</i> ) n. sp.       | -           | 15         | -     |
| <i>Homalopoma?</i> sp. A                             | 25          | -          | -     |
| <i>Homalopoma?</i> sp. B                             | -           | 1          | -     |
| naticid  | 30          | 5          | 1     |
| buccinid?  | -           | 1          | -     |
| Scaphopod  |             |            |       |
| <i>Dentalium</i> sp.                                 | 1           | -          | -     |
| Sponge   |             |            |       |
| <i>Aphrocallistes polyretos</i>                      | ?           | 40         | -     |
| Worm tubes   |             |            |       |
| vestimentiferan?                                     | IN          | 3          | -     |
| serpulid   | IN          | -          | -     |
| Other  |             |            |       |
| decapod parts  | 5           | -          | -     |
| wood fragment  | -           | 1          | -     |
| fish bone  | -           | 1          | -     |

IN = Innumerable.