

Figures 5, 6. (5) Ventral view *Muracypraea* n. sp. A, Fossil Canyon, Imperial County, California, LACMIP 16811. (6) Ventral view of *M. mus*, Terry S. Arnold Collection.

*Muracypraea* has been confirmed in the upper Miocene and extended to the lower Pliocene of the Imperial Group of southern California. This documented occurrence extends the geographic range northward by over 750 kilometers and the North American west coast stratigraphic range upward by 5-7 Ma to the lower Pliocene. The specimens examined represent one or more undescribed species distinct from the described Pacific coast species.

#### ACKNOWLEDGMENTS

During the course of my research Alison Kay provided access to Dominican Republic material in her possession and valuable advice. Emily and Harold Vokes of Tulane University provided access to the extensive collection of Panamá and Dominican Republic material in their possession and provided the original observation that the Panamá and Dominican Republic *henekeni* have "always appeared to be different." Lindsey Groves of the Los Angeles County Museum of Natural History arranged for the loan of specimens and took the photograph in Figure 2, George Kennedy of San Diego State University arranged for the loan of specimens and made extremely valuable comments on a

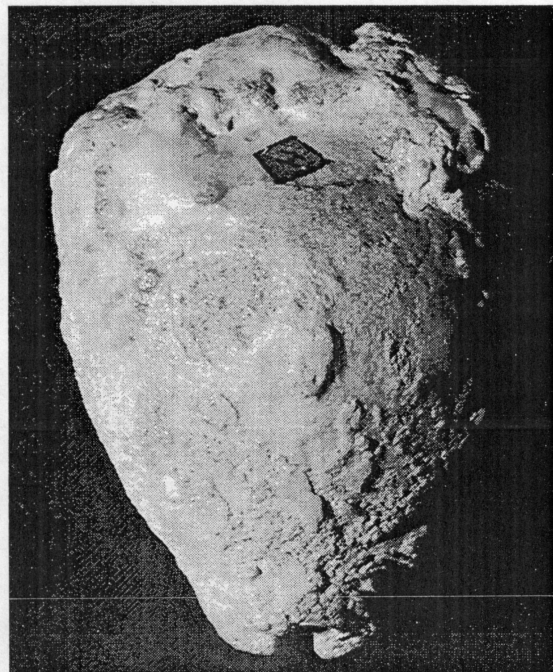


Figure (7) *Muracypraea amandusi* holotype, CAS 6618401.

draft of the manuscript. of Natural History. Dr. Thomas Deméré of the San Diego Museum of Natural