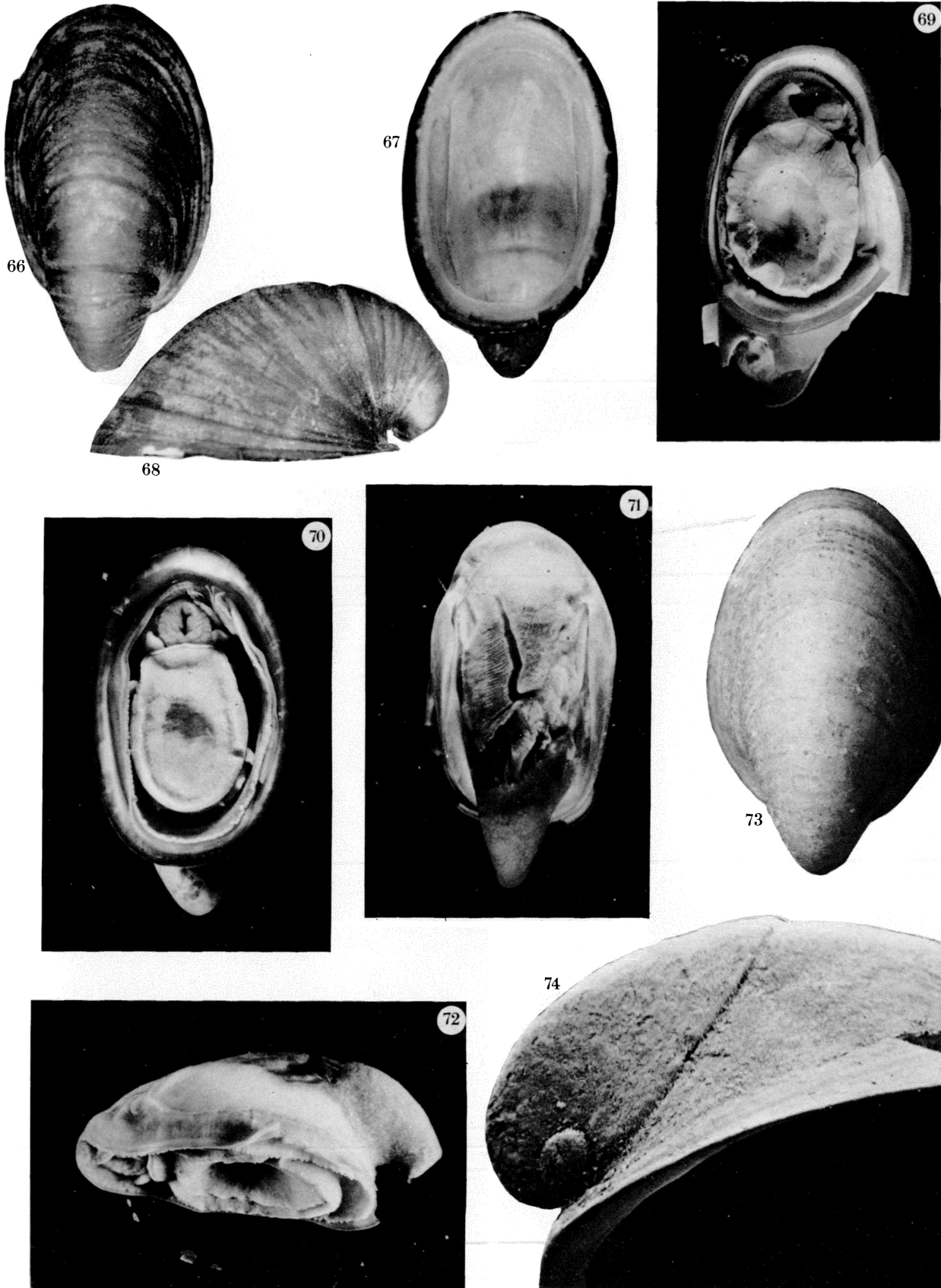


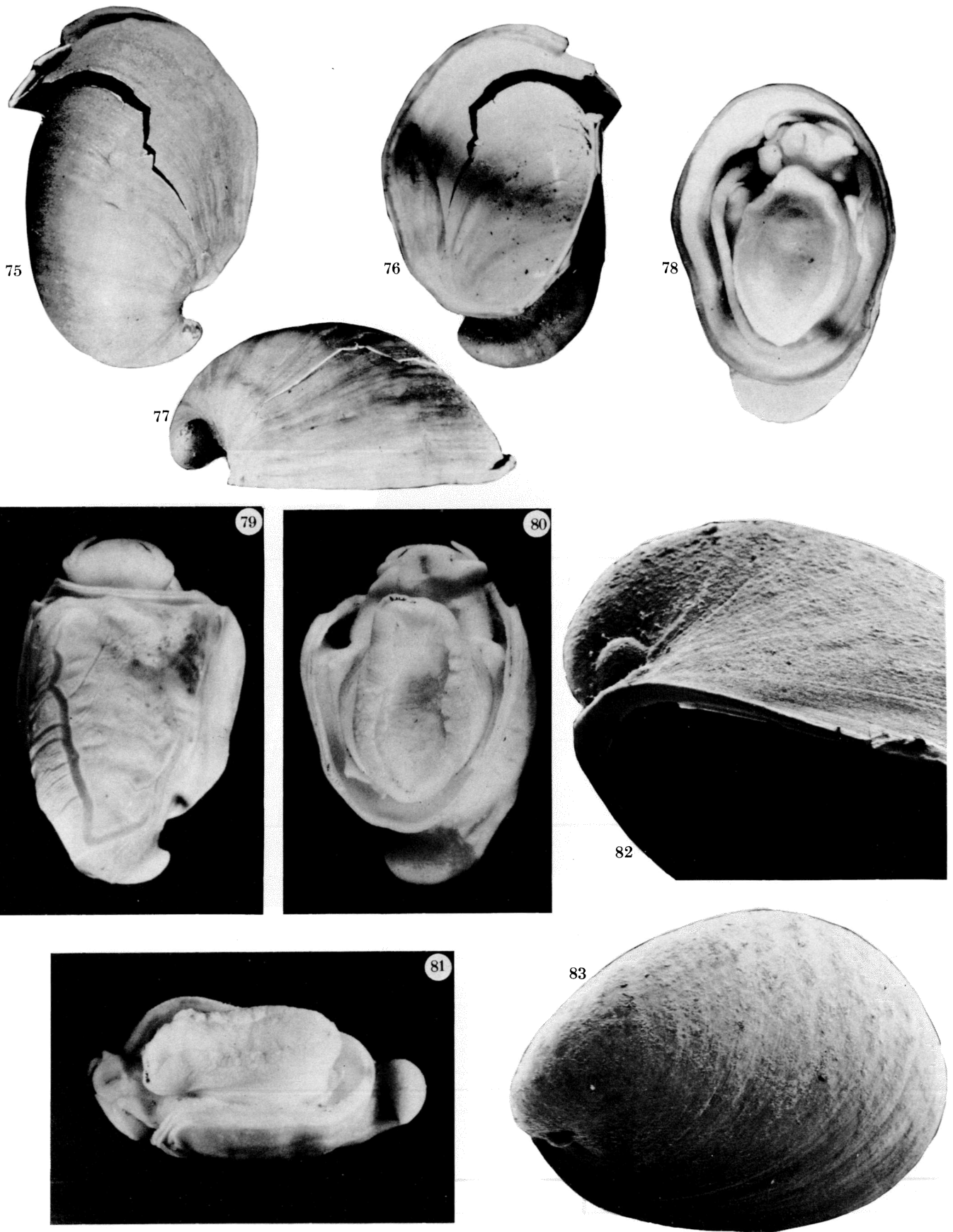
FIGURES 57-65. For description see opposite.



FIGURES 66-74. For description see opposite.

## DESCRIPTION OF PLATE 10

FIGURES 66-74. *Lepetodrilus guaymasensis*, new species. Figures 66-68: exterior, interior and left lateral views of holotype shell (female). Guaymas Basin, *Alvin* dive 1170 (magn.  $\times 4.5$ ). Figure 69: ventral view of male body in partly crushed shell. Same dive number, shell now fragmented, dimensions not taken. Figures 70: ventral view of holotype body in shell (magn.  $\times 5.3$ ). Figures 71 and 72: dorsal and left lateral views of holotype body (magn.  $\times 5.3$ ). Figure 73: exterior view of female shell. Same dive number (magn.  $\times 5.8$ ). Figure 74: protoconch of juvenile shell. Same locality, *Alvin* dive 1177 (magn.  $\times 100$ ).



FIGURES 75-83. For description see opposite.

## DESCRIPTION OF PLATE 11

FIGURES 75-83. *Lepetodrilus fucensis*, new species. Figures 75-77: exterior, interior and right lateral views of holotype shell (male). Juan de Fuca Ridge, *Alvin* dive 1419 (magn.  $\times 2.9$ ). Figure 78: ventral view of male body attached to shell. Same dive number (magn.  $\times 8.3$ ). Figures 79-81: dorsal, ventral and right lateral views of holotype body (magn.  $\times 5.9$ ). Figure 82: protoconch of juvenile shell. Same locality, *Alvin* dive 1410 (magn.  $\times 100$ ). Figure 83: oblique lateral view of immature shell. Same locality, *Alvin* dive 1410 (magn.  $\times 50$ ).