

FIGURES 25-33. For description see opposite.

DESCRIPTION OF PLATE 4

FIGURES 19 AND 20. Radula of *Lepetodrilus fucensis*, new species. Explorer Ridge, *Pisces IV* dive 1494 (magns $\times 2000$ and $\times 500$ respectively).

FIGURES 21-24. Radula of *Gorgolettis marginatus*, new species. East Pacific Rise at 21° N, *Alvin* dive 1221 (magns $\times 500$, $\times 2000$, $\times 2000$ and $\times 1000$ respectively).

DESCRIPTION OF PLATE 5

FIGURES 25-33. *Lepetodrilus pustulosus*, new species. Figures 25-27: exterior, interior and left lateral views of holotype shell (female). Galapagos Rift, *Alvin* dive 880 (magn. $\times 6.5$). Figure 28: exterior view of female shell. East Pacific Rise at 21° N, *Alvin* dive 1214 (magn. $\times 7.3$). Figures 29 and 30: ventral and dorsal views of male body. Galapagos Rift, *Alvin* dive 733 (magn. $\times 7.4$). Figure 31: ventral view of female body. East Pacific Rise at 21° N, *Alvin* dive 1214 (magn. $\times 8.4$). Figure 32: oblique lateral view of juvenile shell. Galapagos Rift, *Alvin* dive 890 (magn. $\times 95$). Figure 33: interior view of apex of juvenile shell. East Pacific Rise at 21° N, *Alvin* dive 1214 (magn. $\times 100$).

DESCRIPTION OF PLATE 6

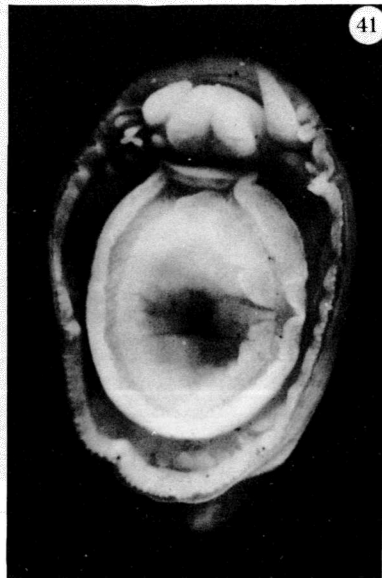
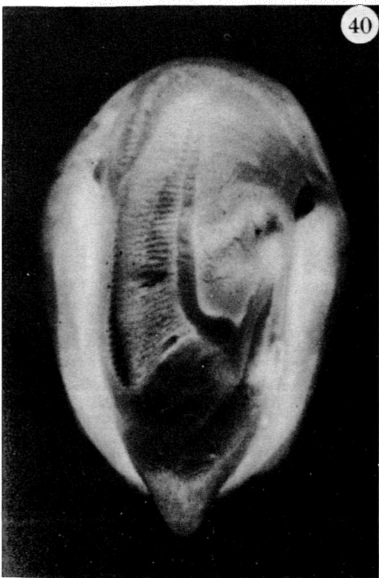
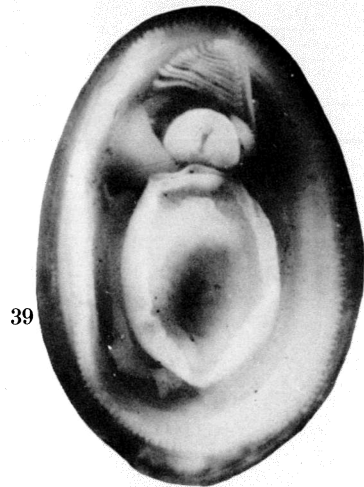
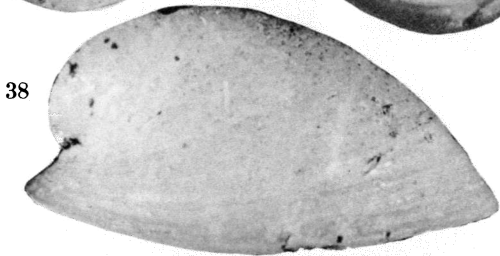
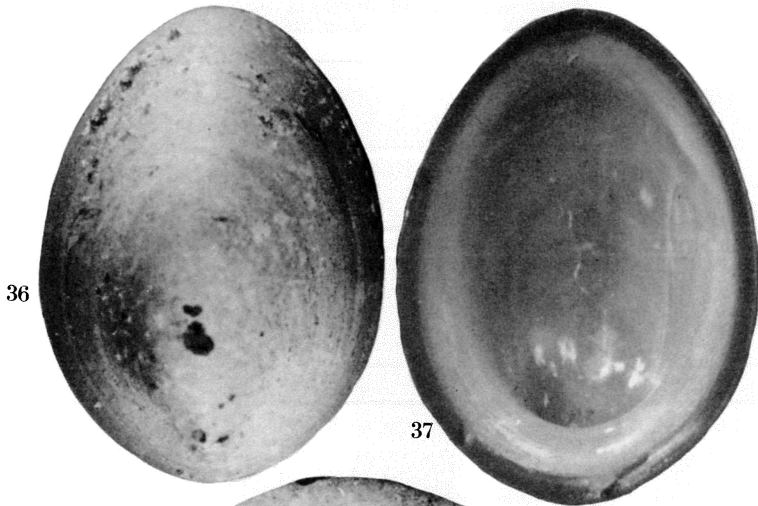
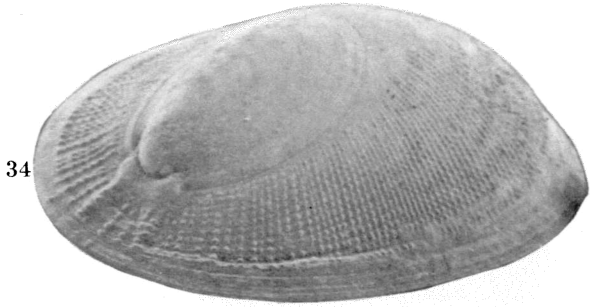
FIGURES 34 AND 35. *Lepetodrilus pustulosus*, new species. Figure 34: oblique view of right side of immature shell. Galapagos Rift, *Alvin* dive 884 (magn. $\times 20$). Figure 35: oblique posterior view of protoconch. Same specimen as figure 34 (magn. $\times 100$).

FIGURES 36–42. *Lepetodrilus elevatus elevatus* new species. Figures 36–38: exterior, interior and right lateral views of holotype shell (female). East Pacific Rise at 21° N, *Alvin* dive 1214 (magn. $\times 9.5$). Figure 39: ventral view of male body in shell. Same dive number (magn. $\times 11.1$). Figures 40–42: dorsal, ventral and right lateral view of holotype body (magn. $\times 13.2$).

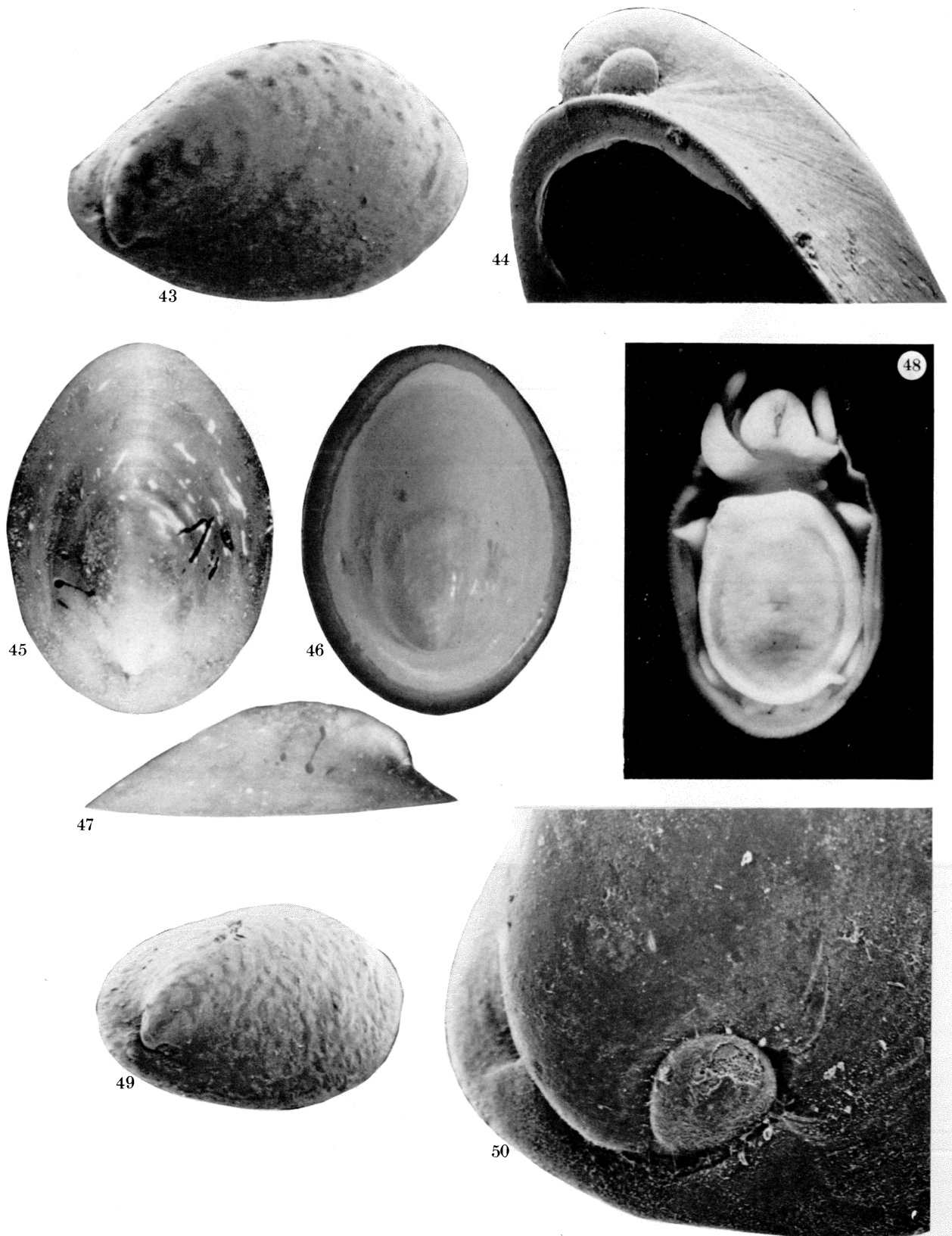
DESCRIPTION OF PLATE 7

FIGURES 43 AND 44. *Lepetodrilus elevatus elevatus* new species. Figure 43: oblique lateral view of right side of immature specimen. East Pacific Rise at 21° N, *Alvin* dive 1214 (magn. $\times 40$). Figure 44: oblique view of protoconch of juvenile specimen. Same dive number. (Magn. $\times 100$.)

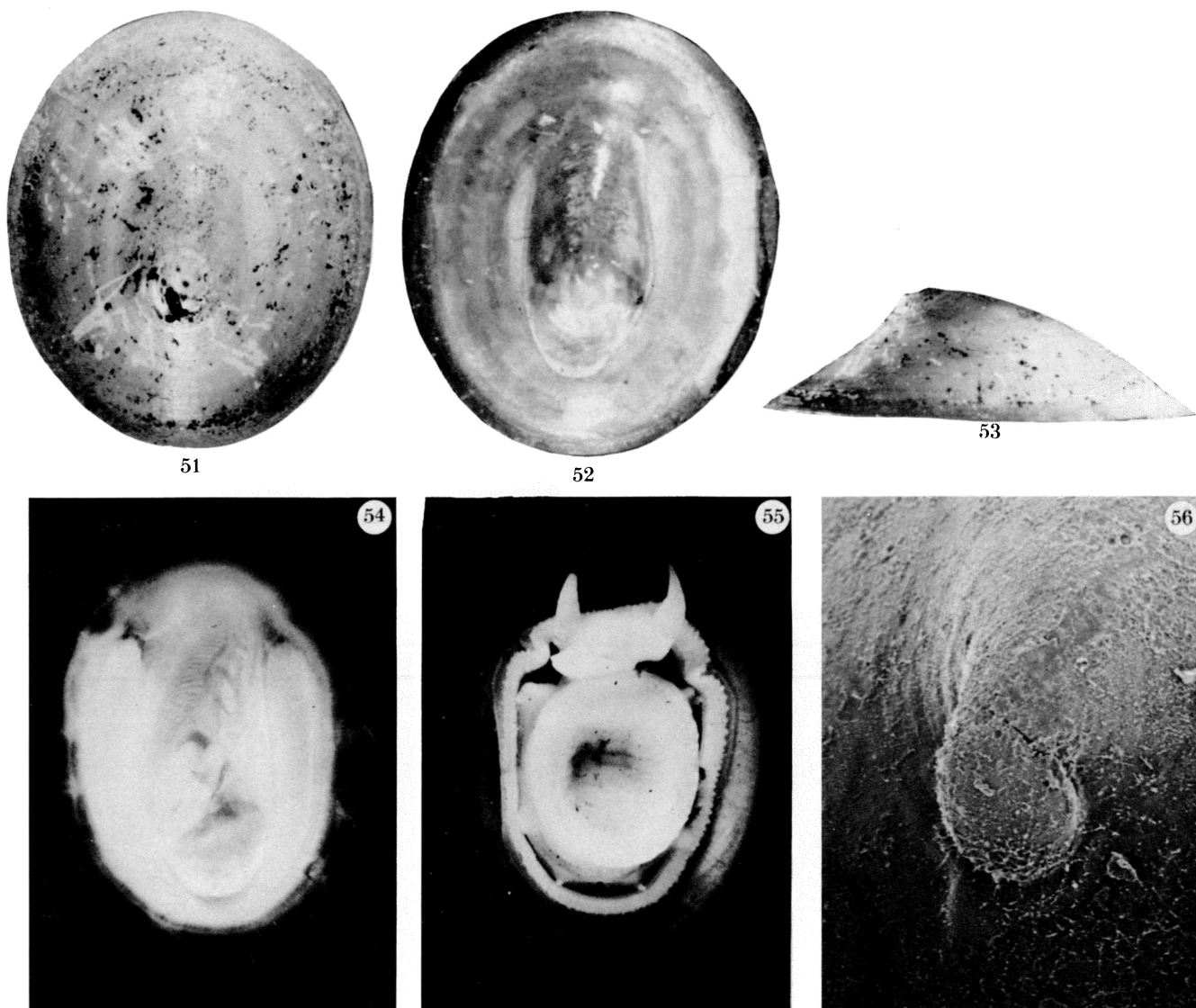
FIGURES 45–50. *Lepetodrilus elevatus galriftensis*, new subspecies. Figures 45–47: exterior, interior and left lateral views of holotype shell (male). Galapagos Rift, *Alvin* dive 990 (magn. $\times 10.3$). Figure 48: same specimen, ventral view of body (magn. $\times 14.4$). Figure 49: oblique lateral view of immature shell. Same dive number (magn. $\times 20$). Figure 50: protoconch of immature shell. Same dive number (magn. $\times 220$).



FIGURES 34-42. For description see opposite.



FIGURES 43-50. For description see facing plate 6.



FIGURES 51-56. *Lepetodrilus ovalis*, new species. Figures 51-53: exterior, interior and right lateral views of holotype (male). East Pacific Rise at 21° N, *Alvin* dive 1214 (magn. $\times 11.2$). Figure 54: dorsal view of holotype body (magn. $\times 13.5$). Figure 55: ventral view of male body in shell. Same dive number (magn. $\times 10.2$). Figure 56: protoconch of immature specimen. Same dive number (magn. $\times 200$).

DESCRIPTION OF PLATE 9

FIGURES 57–65. *Lepetodrilus cristatus*, new species. Figures 57–59: exterior, interior and left lateral views of holotype (sex unknown). East Pacific Rise at 21° N, *Alvin* dive 1211 (magn. × 8.0). Figure 60: exterior view of female shell. Same dive number (magn. × 9.4). Figures 61–63: ventral, dorsal and left lateral view of female body (before sectioning). Galapagos Rift, *Alvin* dive 989 (magn. × 15.2). Figure 64: immature shell, East Pacific Rise at 21° N, *Alvin* dive 1211 (magn. × 30). Figure 65: protoconch of specimen in figure 64 (magn. × 100).