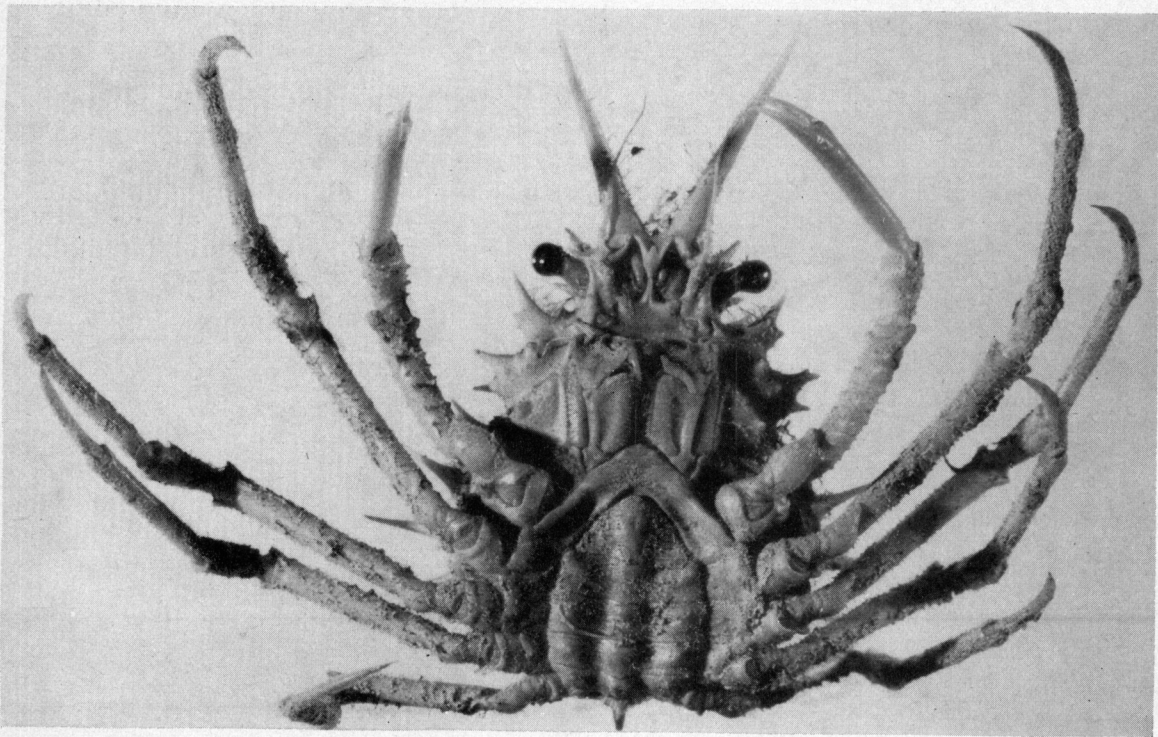
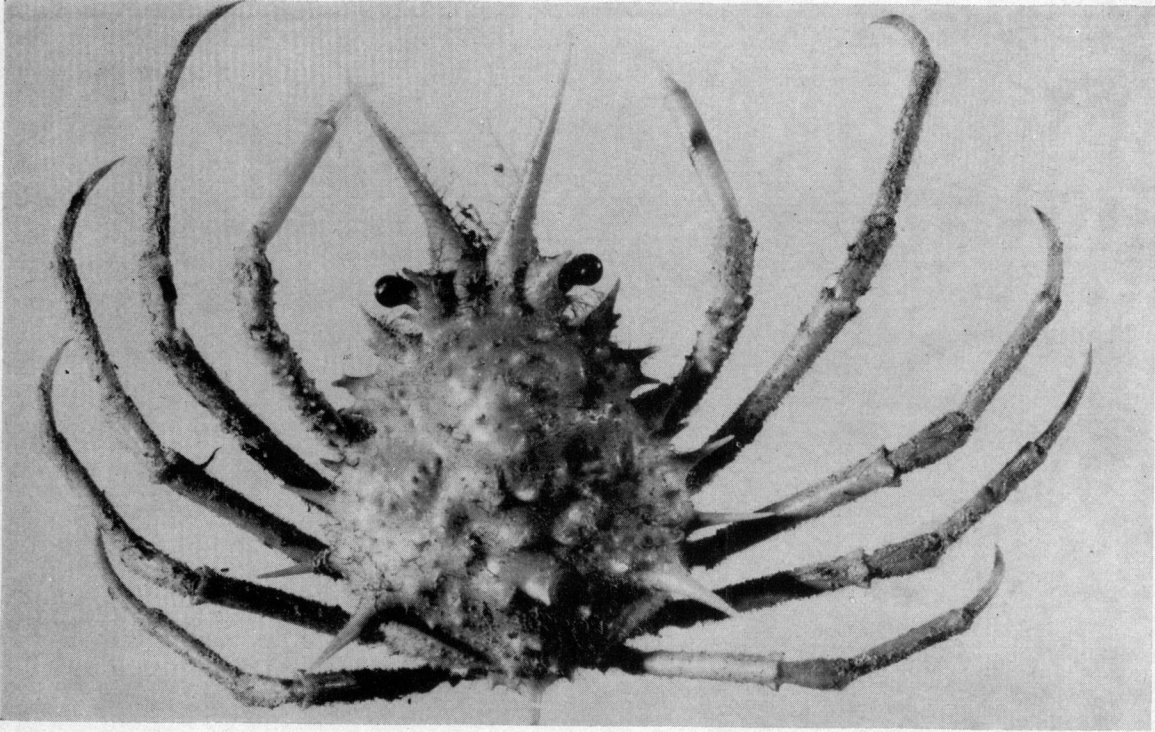


PLATE 2



INDEX

- Abernethy, F., 5, 6, 30, 32
Acanthophrys, 2
Acanthophrys filholi, 2, 3 (figs. 1, 4, 5 and 6), 6
Acanthophrys purpurea, 35
Acanthophrys spatulifer, 2
Aegeon, 50
Aegeon cataphractus, 50
 Agulhas Bank, 9
 Alcock, 49
 Alert, M.V., 14, 29, 42
 Algae, 4
 Anderson, A. R., 49
Argis, 45
Aristaeomorpha foliacea, 35
Atelecyclinae Sub-Family, 5
 Auckland Islands, 6
Austropandalus, 28, 29
Austropandalus grayi, 29
- Balss, H., 48
 Banks Peninsula, 6
 Barnard, K. H., 2, 29, 35, 36, 41, 50
 Batham, E., 44
 Bate, C. S., 13, 28, 29, 34
 Bay of Islands, 10
 Bay of Plenty, 14, 30, 35, 49, 50
 Bennett, W., 1, 2, 4, 5
 Berkeley, A. A., 24
Bresilioida, Superfamily, 16, 19
Bresiliidae, Family, 16, 19
 British Museum (Natural History), 13, 15, 29, 34, 51
- Campylonotidae*, Family, 20, 24, 50
Campylonotus, 13, 20, 23, 26, 27, 51
Campylonotus capensis, 20, 27, 28
Campylonotus rathbunae, 13, 15, 20, 21, 22, 23, 24, 25, 27, 28, 35, 49, 50
Campylonotus semistriatus, 20, 26, 27, 28
Campylonotus seneuili, 20, 22
Campylonotus vagans, 20, 22, 28
Cancer, 6
Cancer boreas, 35
Cancer novaezelandiae, 6
 Canterbury Museum, 1, 3, 13
 Canterbury University College, 9
 Canterbury University Zoology Department, 14
 Cape Campbell, 30, 32, 35
 Cape Farewell, 29
 Cape Kidnappers, 30
 Cape Palliser, 30
 Cape Point, 9
 Cape Young, 5
Carcinoplax, 7
Carcinoplax victoriensis, 1, 4, 6, 7
Caridea, 16
 Castle Point, 30
 Challenger Expedition, 29, 34
 Challenger, H.M.S., 1, 13, 14, 15, 20, 29
 Challenger Station, 28, 30, 34
 Chatham Islands 1954 Expedition, 3, 5, 6, 9, 15, 16, 20, 23, 29, 32, 35, 41, 46, 50
 Chatham Rise, 1, 3, 4, 9, 13, 14, 15, 20, 33, 35, 49, 50, 51
 Chilton, C., 1, 2, 4, 6, 7
Chlorinoides, 2
Chloroticus, 50
Chlorotocella, 29
 Clinton, 5
 Continental Shelf, 1
 Cook Strait, 4, 6, 13, 14, 20, 35, 49, 50, 51
Crangon, 45
Crangon acclivis, 38
Crangon munita, 38
Crangon spinosus, 41
Crangonids, 13, 50
Crangonoida, Superfamily, 35
Crangonidae, Family, 35, 45, 50, 51
Cumacea, 9
- Danish Deep Sea Expedition, 14
Decapoda, 13, 15, 16, 50
 Dell, R. K., 14
 de Man, 29, 38, 44, 50
Diastylidae, Family, 10
Diastylis, 10
Diastylis acuminata, sp.n., 9, 10, 11 (figs. 1-6)
Diastylis insularum, 9, 10
Diastylis koreana, 10
Diastylis krameri, 10
Diastylis neozealanica, 10
Disciadidae, Family, 16, 19
 Discovery Expedition Collections, 14, 15, 41
 Discovery II, R.R.S., 14
 Dohrn, P. F. R., 24
 Dominion Museum, 1, 2, 3, 5, 6, 14, 15, 49
 Dominion Museum Collection, 29, 30, 41
 Dundee University Museum, 27
- Ebalia cheesemani*, 4, 6
Ebalia laevis, 4
Ebalia tuberculosa, 4
Ebalia tumefacta, 4
Elamena producta, 6
 Endeavour Expedition, 49
 Endeavour, F.I.S., 20, 49, 50
Eugonatonotidae, Family, 13, 16, 19, 50
Eugonatonotus, 16, 19
Euryrolambrus australis, 5, 6
- Filhol, H., 2
 Fleming, C. A., 14
 Forty Fours, 4, 15
- Galathea*, H.D.M.S., 14
 Glory Bay (Pitt Island), 4
 Gordon, I., 15
 Grapsoid Crabs, 6
 Great Australian Bight, 20, 49, 50
- Hale, H. M., 2, 7
Halicarcinus cooki, 4, 6
Halicarcinus innominatus, 4

- Halicarcinus mormoratus*, 4
Halicarcinus planatus, 4
Halicarcinus planatus var. *tridentatus*, 4
 Hanson Bay, 2, 4, 5
 Hauraki Gulf, 30
 Hawkes Bay, 10
Hemilamprops, 9
Hemilamprops pellucida, 9
Heterocarpus, 50
Heterozius rotundifrons, 6
 Hippolytidae, Family, 24, 50
 Hippolytids, 50
Holophryxus, 35
 Holthuis, L. B., 16, 19, 20, 24, 28, 29
 Hume, S. C., 30, 41
Hyalinoecia tubicola, 20
Hymenopenaeus sibogae, 35
 Hymenosomidae, Family, 4

 Indian Ocean, 45
 Indonesian Waters, 45
 Isopod, 20, 35

Jacquiniotia, 6
 Japanese Waters, 45

 Kaingaroa, 4, 5, 6, 9, 15
 Kaipara Bar, 30, 33, 35, 49
 Kemp, S., 45
 Knox, G. A., 9, 14, 15
 Kotuku Expedition, 33

 Lampropidae, Family, 9
 Larval migration, 6
 Lebour, M. V., 45
Leontocaris, 50
Leptomithrax, 1, 7
Leptomithrax australis, 6
Leptomithrax longipes, 2, 3 (fig. 2), 6
Leptomithrax richardsoni, n.sp., 2, 3 (fig. 3), 6
 Ling, 5
Lipkius, nov. gen., 16, 19, 50
Lipkius holthuisi, nov. gen., n.sp., 13, 15, 16, 17 (figs. 1-16), 19, 49, 50
 Little Mangere Island, 5
Lysmata nilita, 24
Lysmata seticaudata, 24
 Lyttelton Harbour, 10

 Maimai, S.T., 30
 Marine Department, 30
 Marion Island, 20, 28
 Mayor Island, 30
 Mediterranean, 29
 Menzies Bay, 10
Merhippolyte, 50
 Mernoo Bank, 1, 4, 5, 6, 14
 Miers, E. J., 2, 5, 7
 Murray, J., 29
Musculus antarcticus, 30

Natantia, Sub Order, 14, 16, 49, 50
 National Institute of Oceanography (England), 15
Naxia huipni, 6
Nectocarcinus antarcticus, 5, 6

Nematocarcinus hiatus, 13
Nematocarcinus serratus, 13
Nemocardium pulchellum, 5
 New Zealand Geological Survey, 30
 New Zealand Oceanographic Committee, 14
 New Zealand Shelf, 50
 New Zealand Waters, 45, 49, 50
 Nora Niven, S.T., 1
 North Atlantic, 29
 North Auckland Peninsula, 14, 50
 North Pacific, 29
Notopandalus, nov. gen., 13, 28, 29, 51
Notopandalus magnoculus, 15, 29, 31 (text-fig. 5), 33, 34, 35, 49, 51

Ommatocarcinus, 6
Ommatocarcinus macgillivrayi, 5, 6
 Ortmann, A. E., 38
 Otago Canyons, 14, 49, 50
Ovalipes bipustulatus, 5, 6
 Owenga, 4, 5

 Pacific Coast, 50
Palaemon affinis, 34
Palaemonoida, Superfamily, 19, 20
 Palliser Bay, 41
 Pandalidae, 24, 28, 50, 51
Pandalina, 28, 29, 50
Pandalina brevisrostris, 29
Pandaloida, Superfamily, 28
Pandalopsis, 24, 28, 29
Pandalopsis dispar, 24
Pandalus, 13, 24, 28, 34
Pandalus borealis, 24, 26, 27
Pandalus danae, 24
Pandalus hypsinotus, 24
Pandalus modestus, 29
Pandalus platyceros, 24
 Paracrangon, 50
Paramithrax, 2
Paramithrax latreillei, 4, 6
Paramithrax peronii, 6
 Parasitism, 27, 35
Pasiphaea, 14
Pasiphaea sivado, 14
 Patagonian Region, 20, 27
Peripandalus, 28, 29
 Pernambuco, Brazil, 20, 28
 Petre Bay, 2, 4, 5
Philoceras, 41
Pilumnus spinosus, 5, 6
Pilumnus vespertilio, 5
Pinnotheres sp., 5, 6
 Pitt Island, 3, 4, 5, 9, 15
 Pitt Strait, 6
Plagusia capense, 6
Plesionika, 49, 50
Pontocaris, 50
Pontocaris lacazei, 50
Pontophilus, 41
Pontophilus acutirostratus n.sp., 41, 43 (text-fig. 9), 44, 45, 49, 50, 51
Pontophilus australis, 44
Pontophilus challengerii, 13
Pontophilus gracilis, 13

- Pontophilus pilosoides*, 44, 45, 51
Pontophilus pilosus, 45
Port Hutt, 45
Portobello Marine Biological Collection, 49
Portobello Marine Biological Stations, 14, 15, 20, 42, 49
Prionocrangon, 45, 48, 49, 50
Prionocrangon dofleini, 45, 48
Prionocrangon ommatosteres, 45, 48
Prionocrangon pectinata, 45, 48
- Rasmussen, B., 26, 27
Rathbun, M. J., 7, 38, 41
Reed, J. J., 14
Rhynchocinetes, 16, 19
Rhynchocinetidae, Family, 13, 16, 19, 50
Richardson, L. R., 4, 5, 7
Rijksmuseum van Natuurlijke Historie, 20
- Sagani Bay, 50
Sandra, M.T., 30, 35
Sars, G. O., 36
Schmitt, W. L., 20, 22, 26, 28
Sclerocrangon, 35, 45, 50
Sclerocrangon acclivis, 38
Sclerocrangon bellmarleyi, 35, 36, 38
Sclerocrangon jacqueti, 38, 49, 50, 51
Sclerocrangon knoxi, 13, 14, 15, 35, 37 (fig. 1), 38, 39, 40, 49, 51
Sclerocrangon munita, 41
Sclerocrangon ochotensis, 38
Sclerocrangon procax, 38
Sclerocrangon richardsoni, 13, 14, 15, 39, 40 (text-fig. 8), 41, 51
Sclerocrangon salebrosa, 36
Sergestes arcticus, 14, 15, 35
Sergestes potens, 14
Serolis bromleyana, 20
Sex reversal, 24
Sisters, The, 2, 25
- Sollaud, M. E., 28
South Africa, 50
South African Coast, 9
South African Waters, 51
South Island, N.Z., 14
Spitschakoff, T., 24
Stebbing, T. R. R., 9, 10
Stephenson, K., 35, 45
Stewart Island, 2
Subantarctic Islands, 6, 44
- Te Awapatiki, 2
Te Whanga lagoon, 4
Thalassocaris, 50
Thomas Currell, M.T., 30
Thomson, G. M., 10, 27
Three Kings, 2
Travers, W. T. L., 2
Trichopeltarion n.sp., 5, 6, 7
- Victoria University, 13
Victoria University Cook Strait Collections, 15, 16, 20, 30, 39, 41
Victoria University Kotuku Dredging Expedition, 30
Victoria University Northern Prawn Investigation, 30
- Waitangi, 4, 5
Waitangi Beach, 4
Wellington Harbour, 4
West Indies, 45
Wharekauri, 5
- Yaldwyn, J. C., 13, 14, 15, 34
Yokoya, Y., 48, 50
Young, M. W., 1, 2, 4, 5, 6, 7
- Zimmer, C., 9, 10
Zoological Records, 35, 48

**NEW ZEALAND OCEANOGRAPHIC INSTITUTE
MEMOIRS**

Memoir No.

1. 1955: Bibliography of New Zealand Oceanography 1949–1953 by N.Z. Oceanographic Committee (published as *N.Z.D.S.I.R. Geophys. Mem.*, 4).
2. 1957: General account of the Chatham Islands 1954 Expedition by G. A. Knox (published as *N.Z.D.S.I.R. Bull.* 122).
3. 1959: Contributions to Marine Microbiology. Compiled by T. M. Skerman.
4. 1960: Biological Results of the Chatham Islands 1954 Expedition, Part I—Decapoda Brachyura by R. K. Dell, Cumacea by N. S. Jones, Decapoda Natantia by J. C. Yaldwyn.
5. 1960: Biological Results of the Chatham Islands 1954 Expedition, Part II—Archibenthal and Littoral Echinoderms by H. Barraclough Fell.
6. 1960: Biological Results of the Chatham Islands 1954 Expedition, Part III—Polychaeta Errantia by G. A. Knox.
7. 1960: Biological Results of the Chatham Islands 1954 Expedition, Part IV—Mollusca by R. K. Dell; Sipunculoidea by S. J. Edmonds.
8. 1960: Hydrology of New Zealand Coastal Waters 1955, by D. M. Garner.

