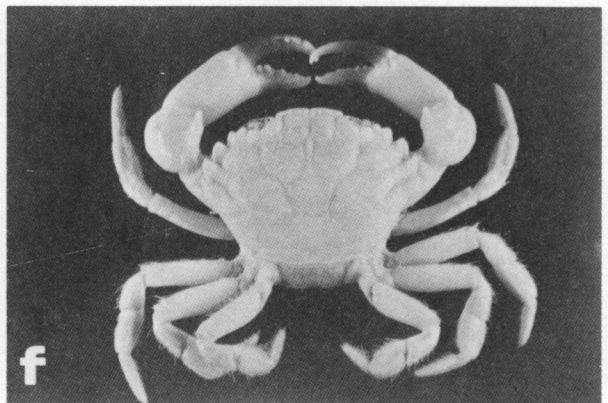
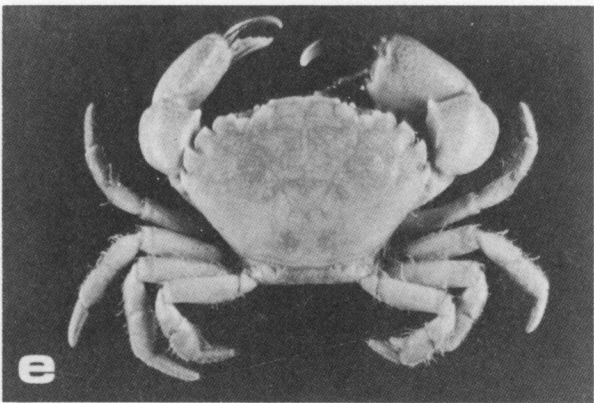
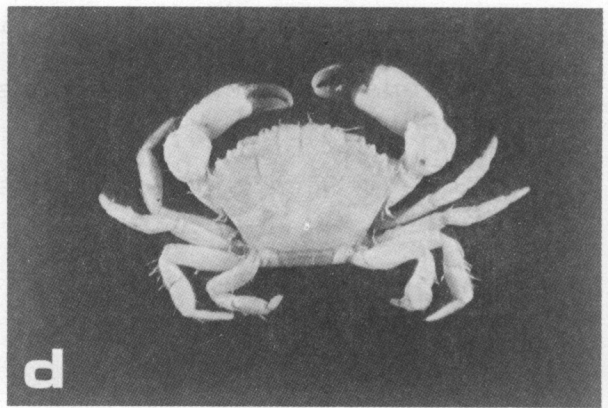
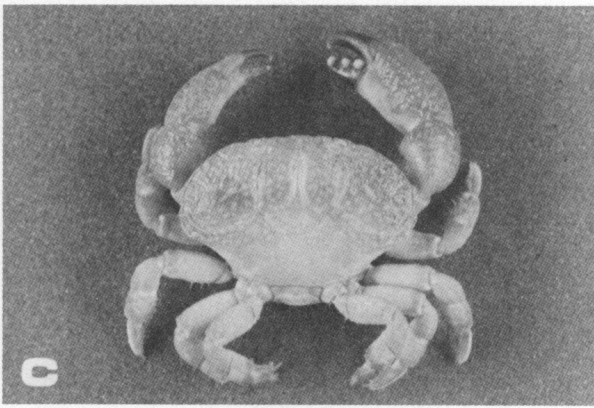
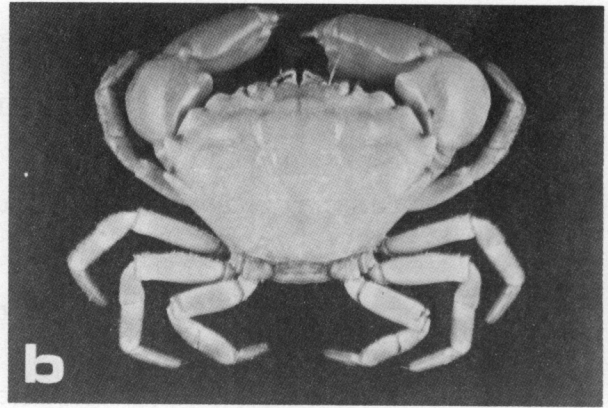
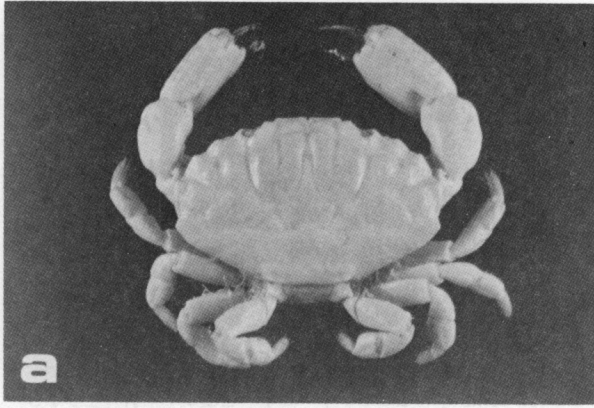


LAMINA 11

- a.- *Danielum ixbauchac* Vázquez-Bader y Gracia, 1995 ♀, 13.8 x 14.9 mm, SMIOM-ICMyL-04069.
- b.- *Domecia acanthophora* acanthophora (Desbonne y Schramm, 1867) ♂, 6.3 x 9.8 mm, SMIOM-03390.
- c.- *Eriphia gonagra* (Fabricius, 1781) ♂, 20.9 x 30.5 mm, SMIOM-FCUNAM-01320.
- d.- *Etisus maculatus* (Stimpson, 1860) ♂, 11.3 x 15.4 mm, SMIOM-FCUNAM-01422.
- e.- *Eurypanopeus abbreviatus* (Stimpson, 1860) ♂, 15.3 x 23.4 mm, SMIOM-01829.
- f.- *Glyptoxanthus erosus* (Stimpson, 1859) ♀, 35.3 x 50.3 mm, SMIOM-00439.



LAMINA 12

- a.- *Leptodius parvulus* (Fabricius, 1793) ♂, 12.5 x 20.1 mm, SMIOM-01155.
- b.- *Menippe nodifrons* Stimpson, 1859 ♀, 38.1 x 56.5 mm, SMIOM-FCUNAM-03723.
- c.- *Ozius reticulatus* (Desbonne y Schramm, 1867) ♂, 11.7 x 19.0 mm, SMIOM-04009.
- d.- *Panopeus harttii* Smith, 1869 ♂, 7.1 x 10.2 mm, SMIOM-01367.
- e.- *Panopeus lacustris* Desbonne, 1867 ♂, 21.0 x 30.8 mm, SMIOM-FCUNAM-01347.
- f.- *Panopeus occidentalis* Saussure, 1857 ♂, 17.4 x 23.6, SMIOM-01387.