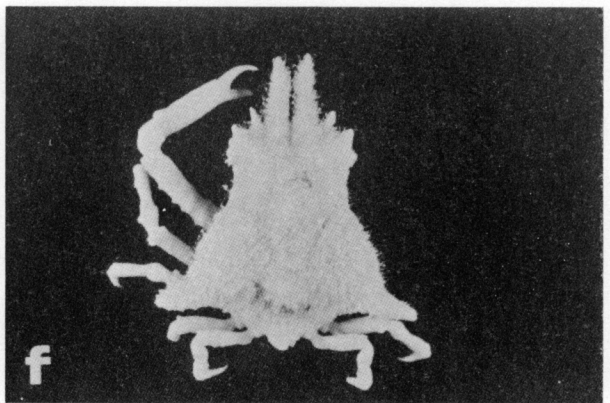
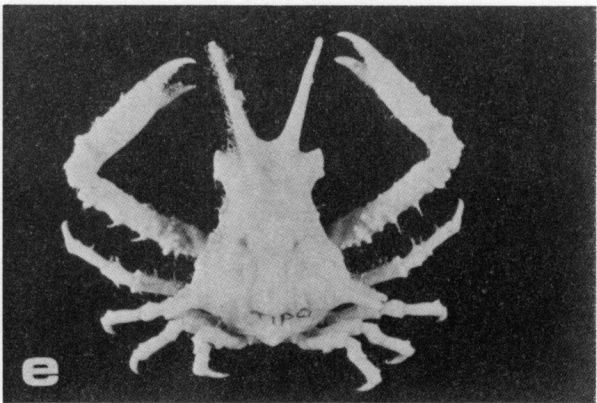
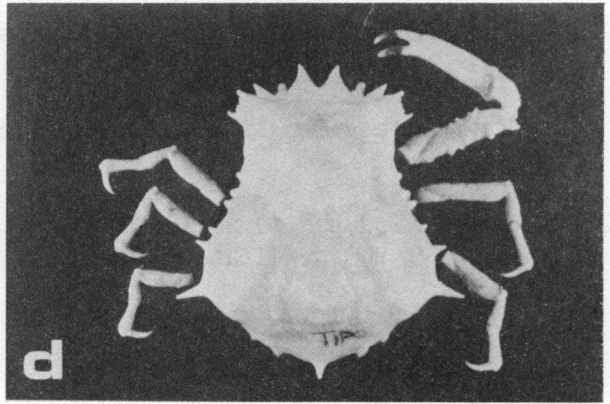
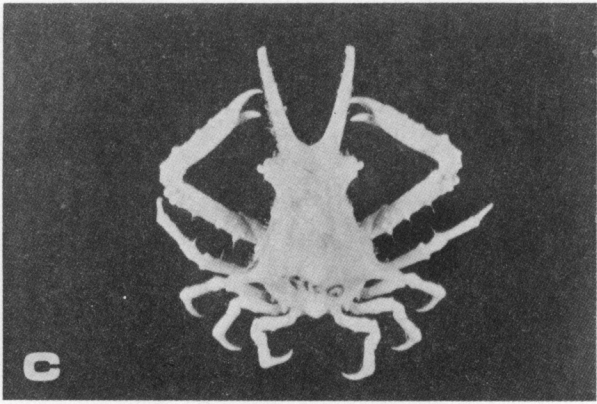
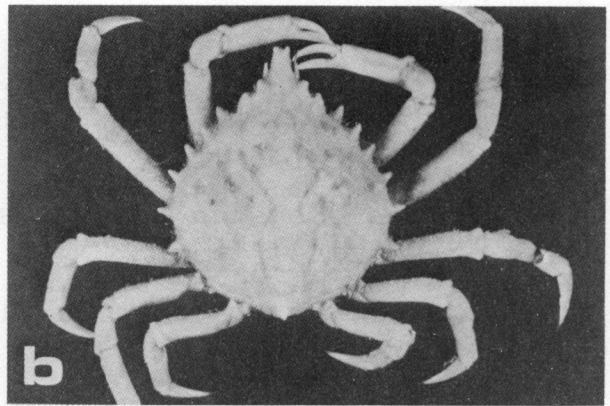
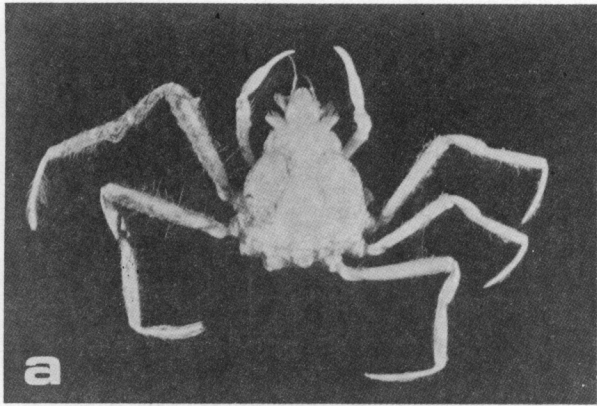


LAMINA 3

- a.- *Iliacantha liodactylus* Rathbun, 1898 ♂, 27.4 x 21.2 mm, SMIOM-ICMyLUNAM-03506.
- b.- *Myropsis quinquespinosa* Stimpson, 1871 ♂, 27.7 x 32.0 mm, SMIOM-ICMyLUNAM-03330.
- c.- *Persephona crinita* Rathbun, 1931 ♂, 26.5 x 24.1 mm, SMIOM-ICMyL-03325.
- d.- *Acanthonyx petiverii* H. Milne Edwards, 1834 ♂, 17.6 x 11.6 mm, SMIOM-00432.
- e.- *Anasimus latus* Rathbun, 1894 ♂, 25.2 x 30.5 mm, SMIOM-00305.
- f.- *Collodes leptocheles* Rathbun, 1894 ♂, 15.3 x 11.1 mm, SMIOM-00306.



LAMINA 4

- a.- *Collodes robustus* Smith, 1881 ♂, 18.3 x 13.7 mm, SMIOM-ICMyLUNAM-03344.
- b.- *Libinia emarginata* Leach, 1815 ♂, 55.0 x 51.4 mm, SMIOM-ICMyLUNAM-03364.
- c.- *Macrocoeloma camptocerum* (Stimpson, 1871) ♂, 28.9 x 18.0 mm, SMIOM-FCUNAM-03413.
- d.- *Macrocoeloma concavum* Miers, 1886 ♀, 42.7 x 37.9 mm, SMIOM-00160.
- e.- *Macrocoeloma diplacanthum* (Stimpson, 1860) ♂, 36.3 x 24.9 mm, SMIOM-01216.
- f.- *Macrocoeloma trispinosum trispinosum* (Latreille, 1825) ♂, 32.9 x 27.9 mm, SMIOM-01395.