

Abe, Koji 1981

CRUSTACEA LIBRARY
SMITHSONIAN INSTITUTION
RETURN TO W-119

Researches on Crustacea, No. 11
Carcinological Society of Japan
Odawara Carcinological Museum
Azabu-Juban 3-11, Minatoku, Tokyo
(Issued—Dec. 25, 1981)

日本初記録の *Cancer magister* DANA

ホクヨウイチョウガニ (新称)

挿図 1

阿 部 晃 治

(道立中央水産試験場)

FIRST RECORD OF THE DUNGENESS CRAB, *CANCER* *MAGISTER* DANA FROM NORTHERN JAPAN

With 1 Text-figure

By

Koji ABE

(Hokkaido Central Fisheries Experimental Station, Yoichi-machi, Hokkaido)

Abstract: One male specimen of the Cancroid Crab was obtained by a smelt-beam trawl from a depth of 15 m, off Kushiro, the Pacific coast of Hokkaido, on November 16, 1979. It was identified by Dr. T. SAKAI of the Carcinological Society of Japan as *Cancer magister* DANA. This crab is one of the important provision resources in U.S.A. (Known as the dungeness crab or common edible crab), ranging along the Pacific coast of North America, from Unalaska, Alaskan Peninsula, south-ward to Montebay Bay, California. It has recently been imported from America to Japan as an edible crab, sold at the markets of Tokyo and Yokohama by the false name of "American swimming crab".

Cancer magister is morphologically characterized by having the carapace widest at the last or tenth antero-lateral tooth, and the antero-lateral teeth are low and their tips directed forwards. The postero-lateral borders are unbroken and entire. Fingers of chelipeds are not pigmented with black color.

This crab was obtained for the first time in Japan as well as in the north-western Pacific areas. The author is not certain whether this crab was migrated from north-western coast of America of Alaska, by influence of the cold northern current, or its young or larval crab had been transported by means of the ballast water tank of a ship. On the other hand, the author's interest has been aroused by the fact that the five American and Alaskan flounder—*Embassichthys bathybius* had been recorded for the first time in the Pacific coast of Hokkaido by AMAOKA et al. in 1978 (loc. cit.).

日本で未記録のイチョウガニ属の1種が、北海道の太平洋岸から1個体採集された。この標本は日本甲殻学会会長酒井恒博士によって、*Cancer magister* と同定された。アラスカ、太平洋岸ウナラスカ島から南へカリフォルニア半島のマグダレナ湾にかけて分布する大型種であ

る (SCHMITT, 1921)。従って、本標本は西部太平洋および日本からの初記録となる。ここにホクヨウイチョウガニの和名を付して報告する。

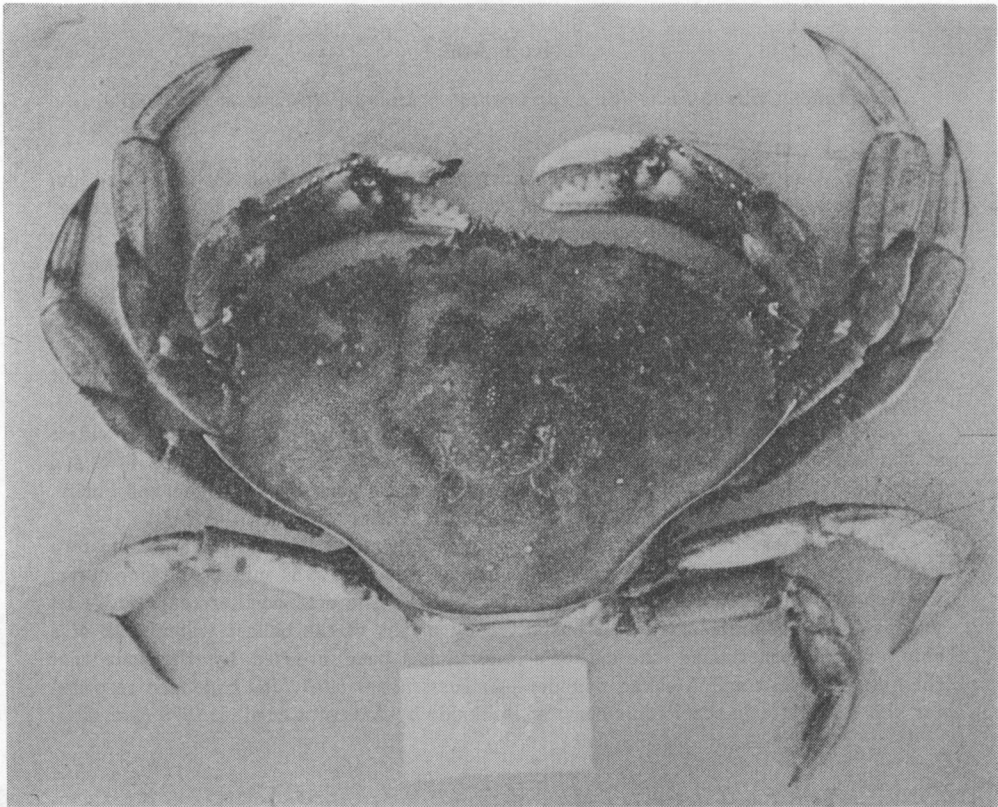
本文に入るに先立って、本標本の同定ならびに本文のご校閲を賜った日本甲殻類学会長酒井恒博士に深湛なる謝意を表します。また文献についてご高配を載いた西海区水産研究所竹下貢二博士、標本を提供された沢田幸雄氏に深く感謝の意を表します。

Cancer magister DANA ホクヨウイチョウガニ

(Fig. 1)

Cancer magister DANA, 1852: 73 (模式標本産地、サンフランシスコ湾)

材料 標本は1979年11月16日に釧路港前の水深 15 m の地点で、シシャモ桁曳網により採集された。採集後の標本は生きたままの状態で行立釧路水産試験場に持ち込まれ、現在は道立中央水産試験場に保存されている。採集時の標本は左鉗脚の指節の前端 1/2 位が脱落し、その傷口には黒色のかさぶたが形成されていた。また、左第4歩脚は座〜基節の既設自切面より脱落していたが、これは自切面の状態からみて、採集時から水産試験場に持ち込まれる間に脱落し



Text-Fig. 1. *Cancer magister* DANA

ホクヨウイチョウガニ