

Fig. 25 – *Glyphea tricarinata* n.sp., n. cat. MSNM i9970, photo and reconstruction ($\times 3.1$)

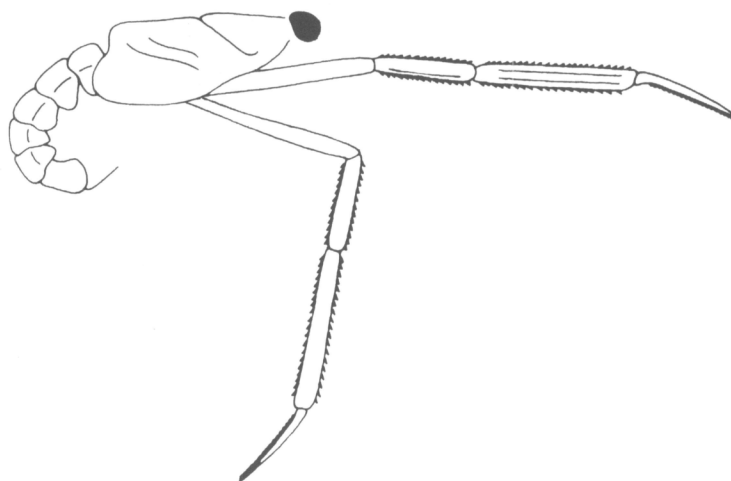


Fig. 26 – *Mecochirus germari* n.sp., holotype, n. cat. MSNM il3521, photo and reconstruction ($\times 1.8$)

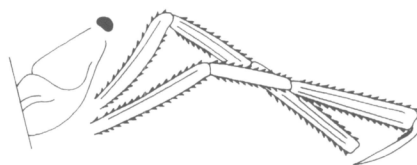
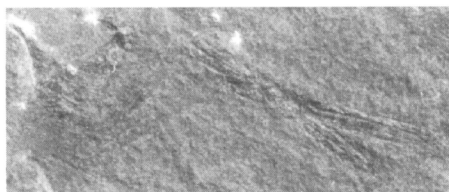


Fig. 27 – *Mecochirus germari* n.sp., n. cat. MSNM il0124, photo and reconstruction ($\times 1.7$)

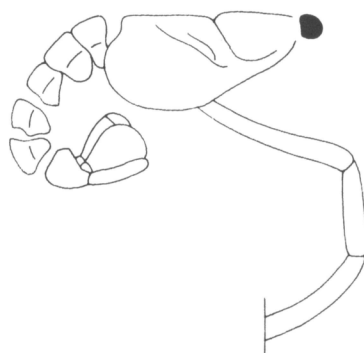


Fig. 28 – *Mecochirus germari* n.sp., n. cat. MSNM il0121, photo and reconstruction ($\times 1.9$)

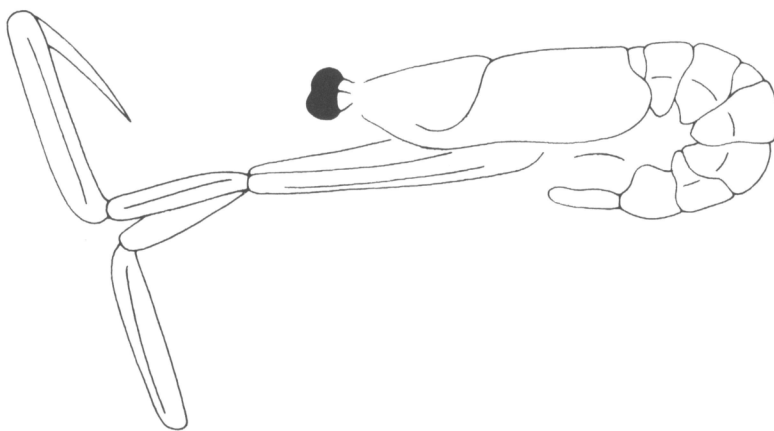
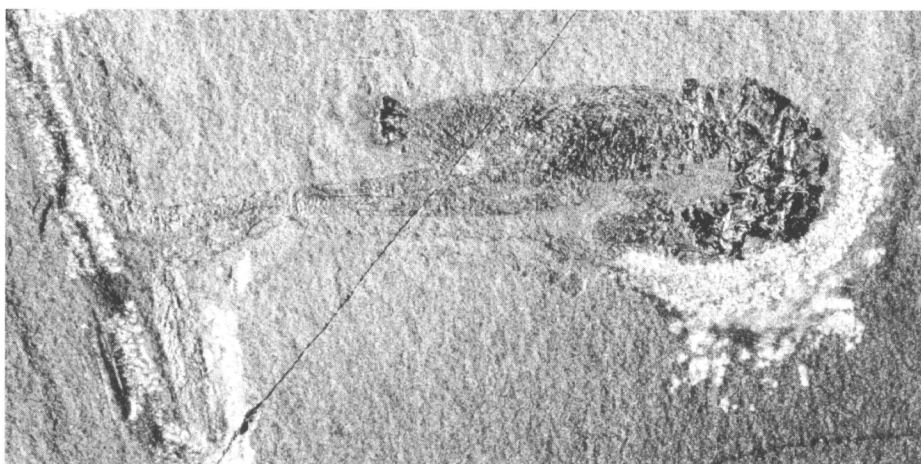


Fig. 29 – *Mecochirus germari* n.sp., n. cat. MSNM il0920, photo and reconstruction ($\times 2.5$)

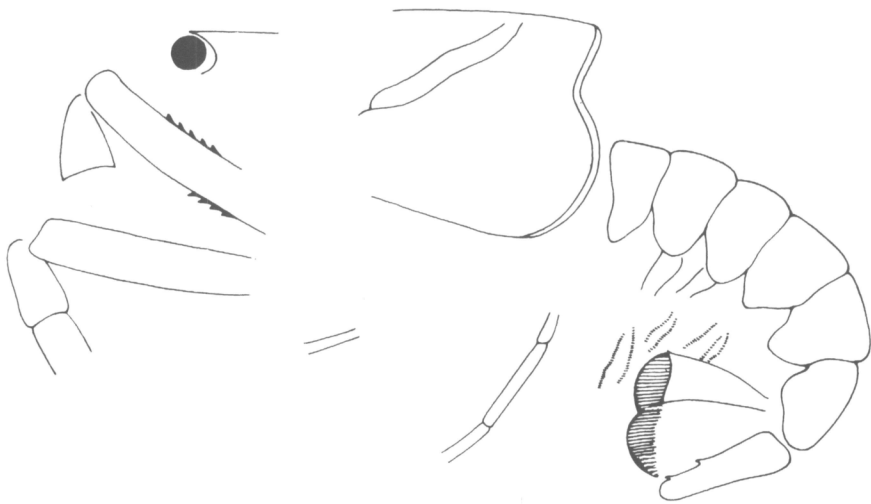
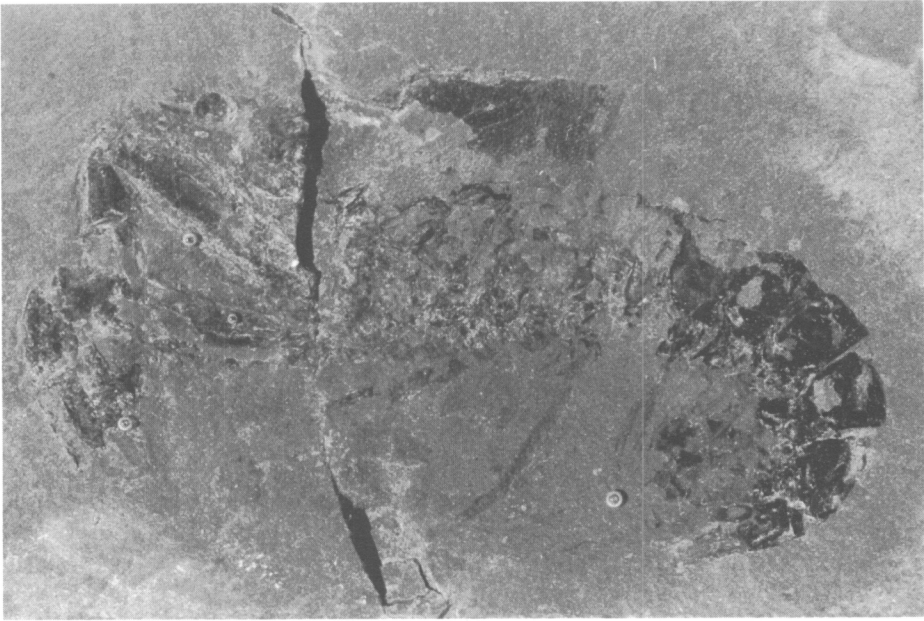


Fig. 30 – *Pseudoglyphea ancylochelis* (Woodward, 1863), n. cat. MSNM il0293, photo and reconstruction ($\times 2.5$)

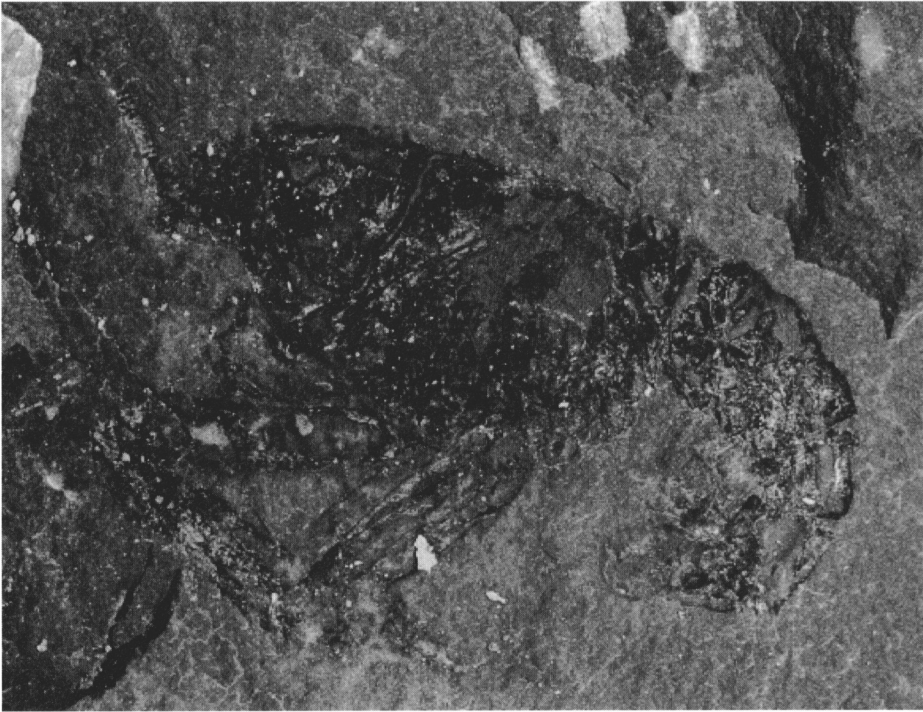


Fig. 31 – *Pseudoglyphea ancylochelis* (Woodward, 1863), n. cat. MSNM il0254, photo and reconstruction ($\times 2.2$)

