

Fig. 17 – *Eryma meyeri* n.sp., n. cat. MSNM i9893, photo and reconstruction ($\times 4.8$)

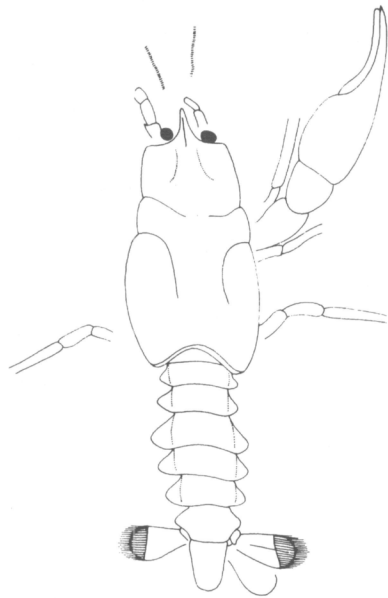


Fig. 18 – *Phlyctisoma sinemuriana* n.sp., holotype, n. cat. MSNM il3517, photo and reconstruction ($\times 2.6$)



Fig. 19 – *Phlyctisoma sinemuriana* n.sp., n. cat. MSNM i9887, photo and reconstruction ($\times 2.8$)

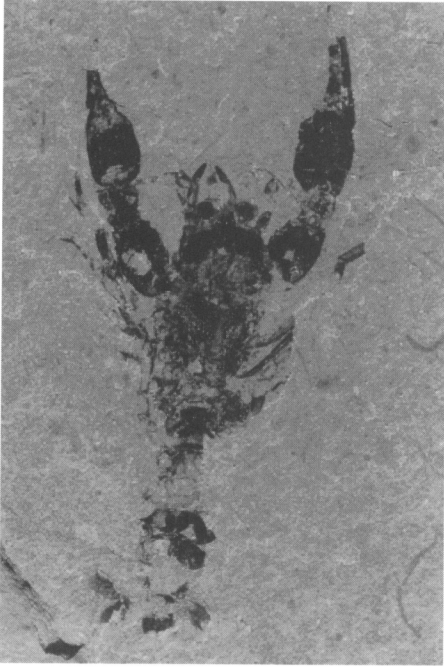


Fig. 20 – *Phlyctisoma sinemuriana* n.sp., n. cat. MSNM il0450, photo and reconstruction ($\times 2.7$)

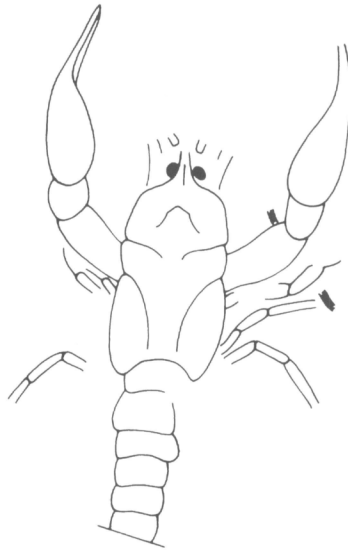


Fig. 21 – *Phlyctisoma sinemuriana* n.sp., n. cat. MSNM i7608, photo and reconstruction ($\times 2.7$)

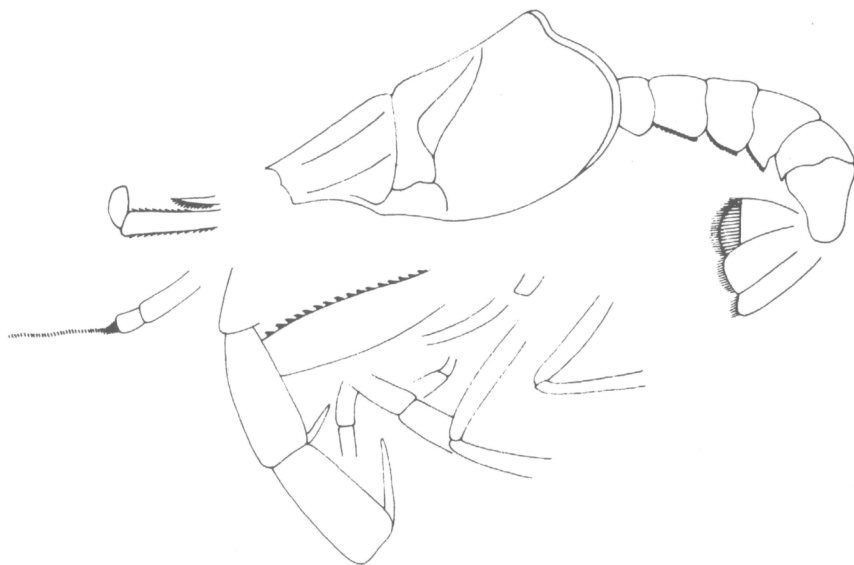
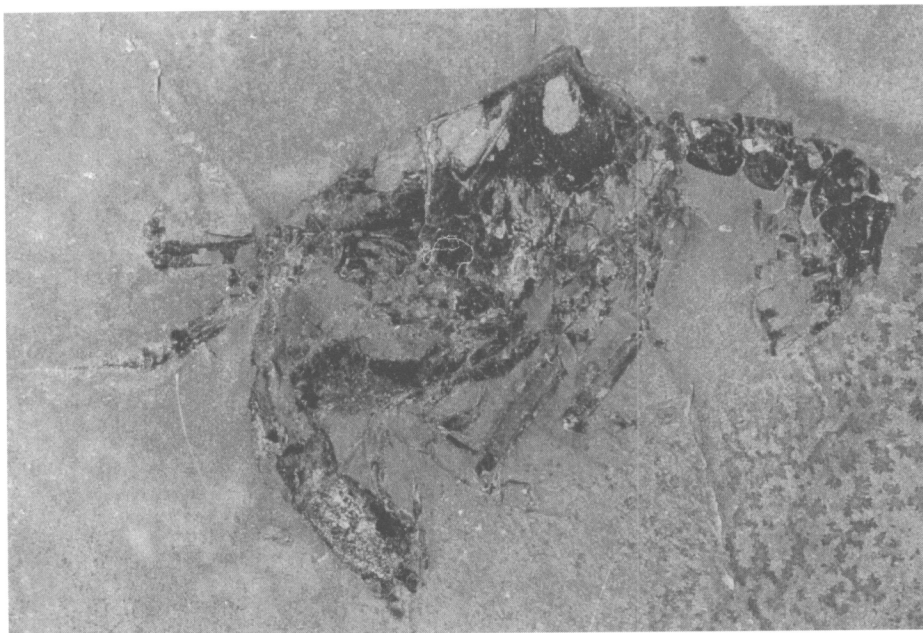


Fig. 22 – *Glyphea tricarinata* n.sp., holotype, n. cat. MSNM i7609, photo and reconstruction ($\times 1.7$)

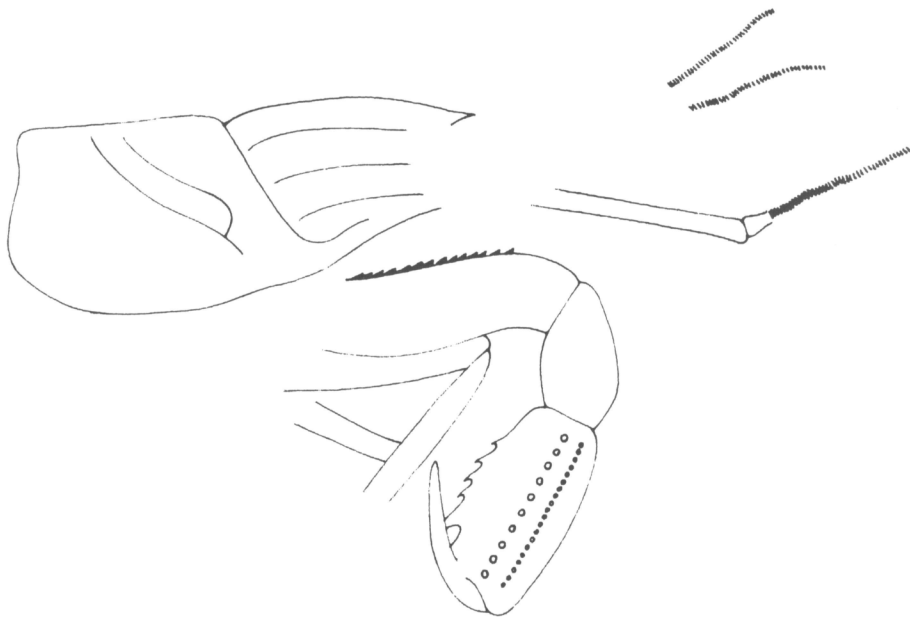
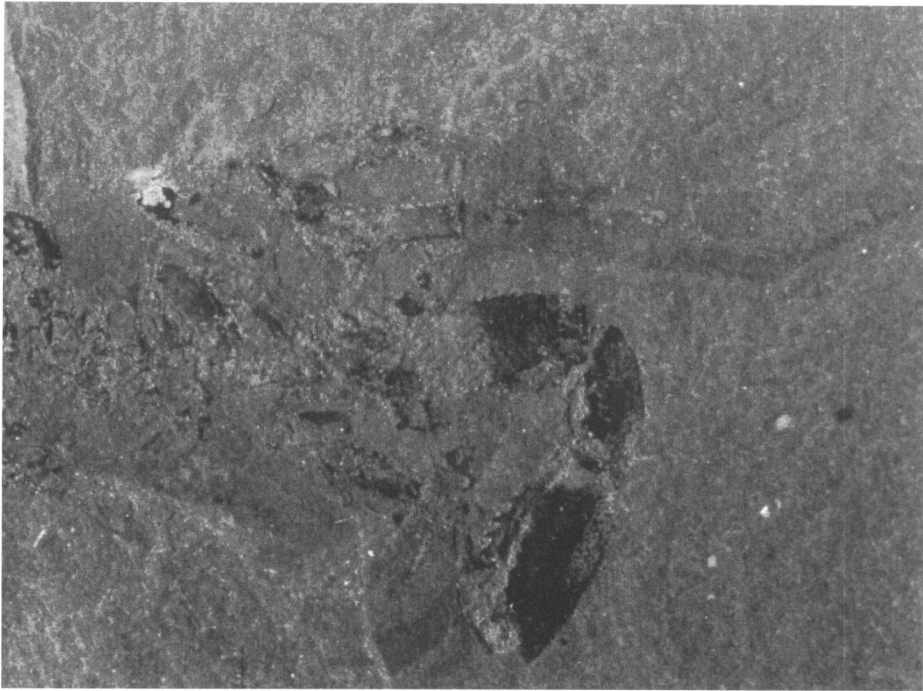


Fig. 23 – *Glyphea tricarinata* n.sp., n. cat. MSNM i0451, photo and reconstruction ($\times 5.6$)

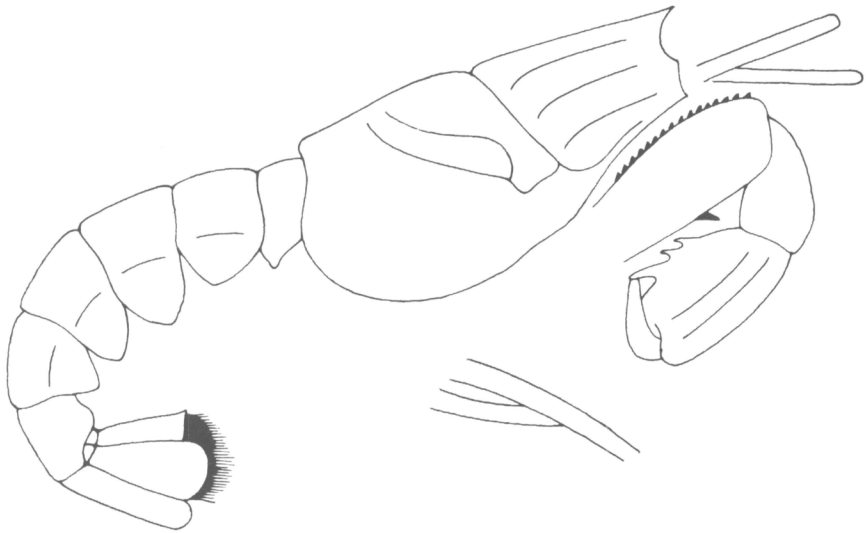
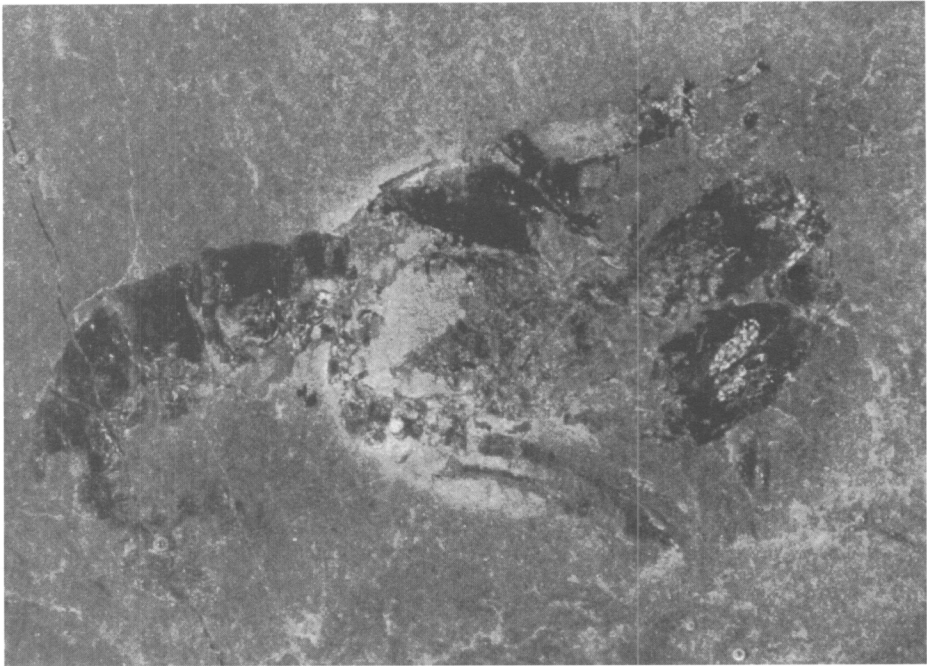


Fig. 24 – *Glyphea tricarinata* n.sp., n. cat. MSNM i9967, photo and reconstruction ($\times 5.3$)