

Carapace broader than long, surface quite smooth, gastric and cardiac regions well defined, post-frontal lobes pronounced. Front about as wide as orbit, margin slightly convex. Lateral border of carapace strongly convex, bearing a weak ridge anteriorly, marked by oblique lines posteriorly; one small tooth behind external orbital angle.

Chelipeds in male unequal, subequal in female, surface smooth; large cheliped (male), upper margin of arm haired, a sharp tooth at inner angle of wrist; palm short and high, a wide gap between fingers when closed, a few low teeth on cutting edges. Walking legs long, rather slender, unarmed, some joints fringed with bristles.

Rathbun (7) identified the Hawaiian specimens collected by Mann as *Thelphusa rotunda* of Quoy and Gaimard (6), suggesting the name *Cardisoma rotundum* and placing in synonymy under it Dana's name

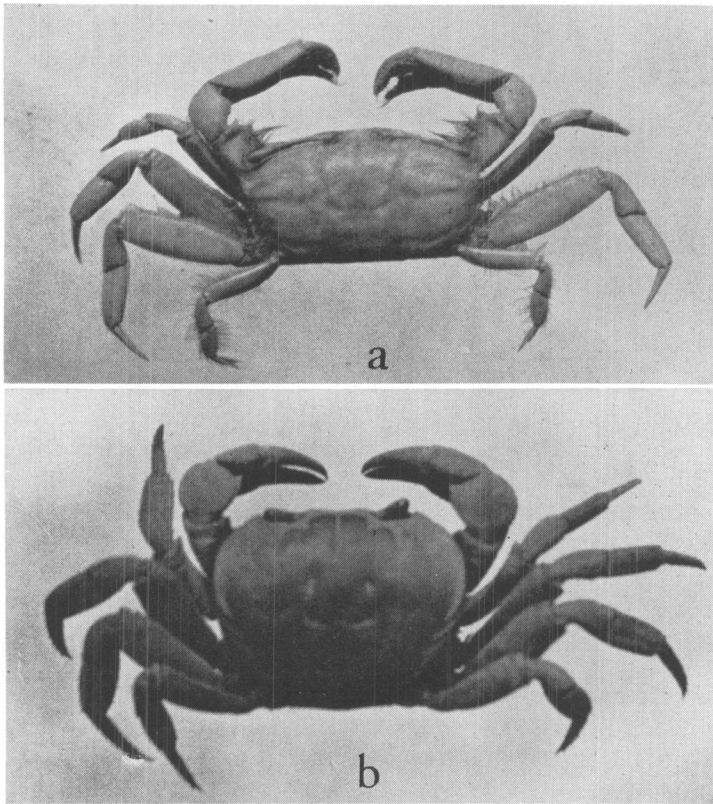


FIGURE 10.—a, *Macrophthalmus convexus*, specimen from Fiji; b, *Cardisoma hirtipes*, female specimen from Jaluit Island.

C. hirtipes, with which the Hawaiian form apparently agrees. However, since Rathbun's publication authors have generally preferred that the name suggested by Dana designate this particular land crab.

Apart from the specimens collected by Mann on Oahu nearly 100 years ago, there is no record to justify the inclusion of any member of the genus *Cardisoma* among the Hawaiian fauna at the present time.

The two species of *Cardisoma* which have a wide and parallel dispersal in the Indo-Pacific region are *C. hirtipes* and *C. carnifex* (Herbst), much alike in size and general appearance, both ranging into the central Pacific area but not now found in Hawaii.

The two species, *C. hirtipes* and *C. carnifex*, may usually be distinguished as follows: (1) The prominent post-frontal lobes of the carapace of *C. hirtipes* are only slightly developed in *C. carnifex*. (2) The ridge of the anterolateral border of the carapace in *C. hirtipes* stops short of the level of the cervical groove (posterior boundary of gastric area), whereas in *C. carnifex* it extends posteriorly beyond this level. (3) Well-developed diagonal striae mark the posterolateral border of the carapace in *C. hirtipes*; whereas in *C. carnifex* the striae are poorly developed or absent. (4) In *C. hirtipes* the infra-orbital border of the orbit meets the lateral border in an acute angle instead of a right angle as in *C. carnifex*.

Bishop Museum has specimens of *C. hirtipes* from the Line Islands, Fiji, Jaluit Island, and Guam; and it has specimens of *C. carnifex* from the Line Islands, Penrhyn Island, Raiatea, and Australia. One male specimen of *Cardisoma carnifex* from Fanning Island is 95 mm. in breadth of carapace, the hand (palm and fingers) of the large cheliped is 120 mm. long and the palm is 50 mm. high.

BIBLIOGRAPHY

1. CANO, GAVINO, Crostacei Brachiuri ed Anomuri raccolti nel viaggio della Vettor Pisani intorno al globo, Soc. Nat. Napoli, Boll. I, 3: 79-105, 169-268, 1889.
2. CRANE, JOCELYN, On the growth and ecology of the brachyuran crabs of the genus *Ocypode*, *Zoologica* 26: 297-310, pls. 1, 2, figs. 1-7, 1941.
3. EDWARDS, A. MILNE, Recherches sur la faune Carcinologique de la Nouvelle-Calédonie, *Nouv. Arch. Mus. d'Histoire naturelle* 9: 156-332, pls. 4-18, 1873.
4. KINGSLEY, J. S., Carcinological notes 2—Revision of the Gelasimi, *Acad. Nat. Sci. Philadelphia, Proc.* 1880: 135-155.
5. OWEN, RICHARD, IN *Zoology of Beechey's Voyage*, 77-92, pls. 24-28, 1839.
6. QUOY, J. R. C. AND J. P. GAIMARD, IN *Freycinet's Voyage autour du Monde*, *Zoology*, 1825.
7. RATHBUN, MARY J., The Brachyura and Macrura of the Hawaiian Islands, *U. S. Fish Comm., Bull.* 23 (3) : 829-930, pls. 1-24, text figs. 1-79, 1903 (1906).
8. RATHBUN, MARY J., A new genus and some new species of crabs of the family Goneplacidae, *U. S. Nat. Mus., Proc.* 48: 137-154, 1915.
9. SAKAI, TUNE, Studies on the crabs of Japan IV, Brachygnatha, Brachyrhyncha, 365-741, pls. 1-111, text figs. 1-129, 1939.
10. SCHMITT, WALDO L., The marine decapod Crustacea of California, *Univ. of California Pub. Zoology* 23: 1-359, pls. 1-50, text figs. 1-165, 1921.
11. TESCH, J. J., The Decapoda Brachyura of the Siboga Expedition, II, Goneplacidae and Pinnotheridae, *Siboga Exped., Monogr.* 39c¹: 1-147, pls. 7-18, 1918.

