



Fig. 20. *Paguristes digitalis* Stimpson, 1858: ♂, SL = 13.15 mm, Fukiura, Yamagata-ken, YPM-SS 1749. A, right second pereopod, lateral; B, same, dactyl, propodus and carpus, mesial; C, right third pereopod, lateral. Setae partially cut off. Scales equal 5 mm.

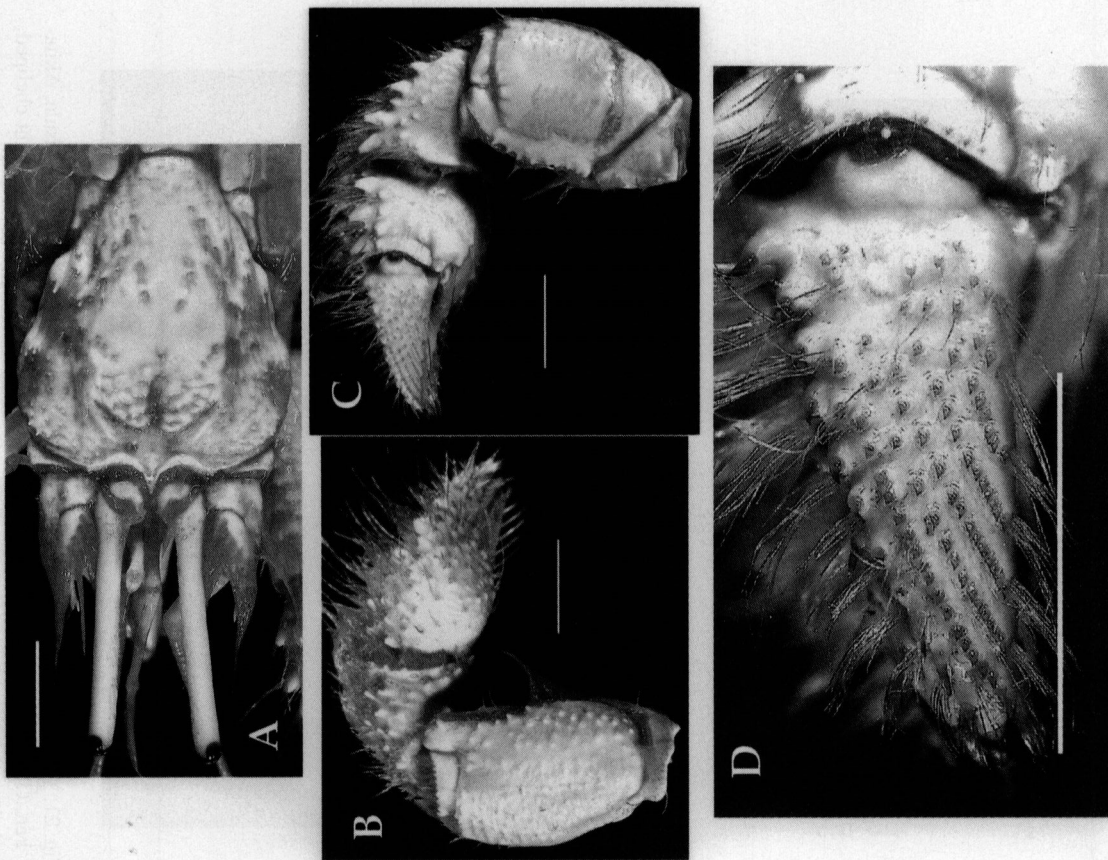


Fig. 19. *Paguristes digitalis* Stimpson, 1858: ♂, SL = 13.15 mm, Fukiura, Yamagata-ken, YPM-SS 1749. A, shield and cephalic appendages, dorsal; B, right cheliped, lower; C, same, upper; D, same, dactyl, upper. Scales equal 5 mm.

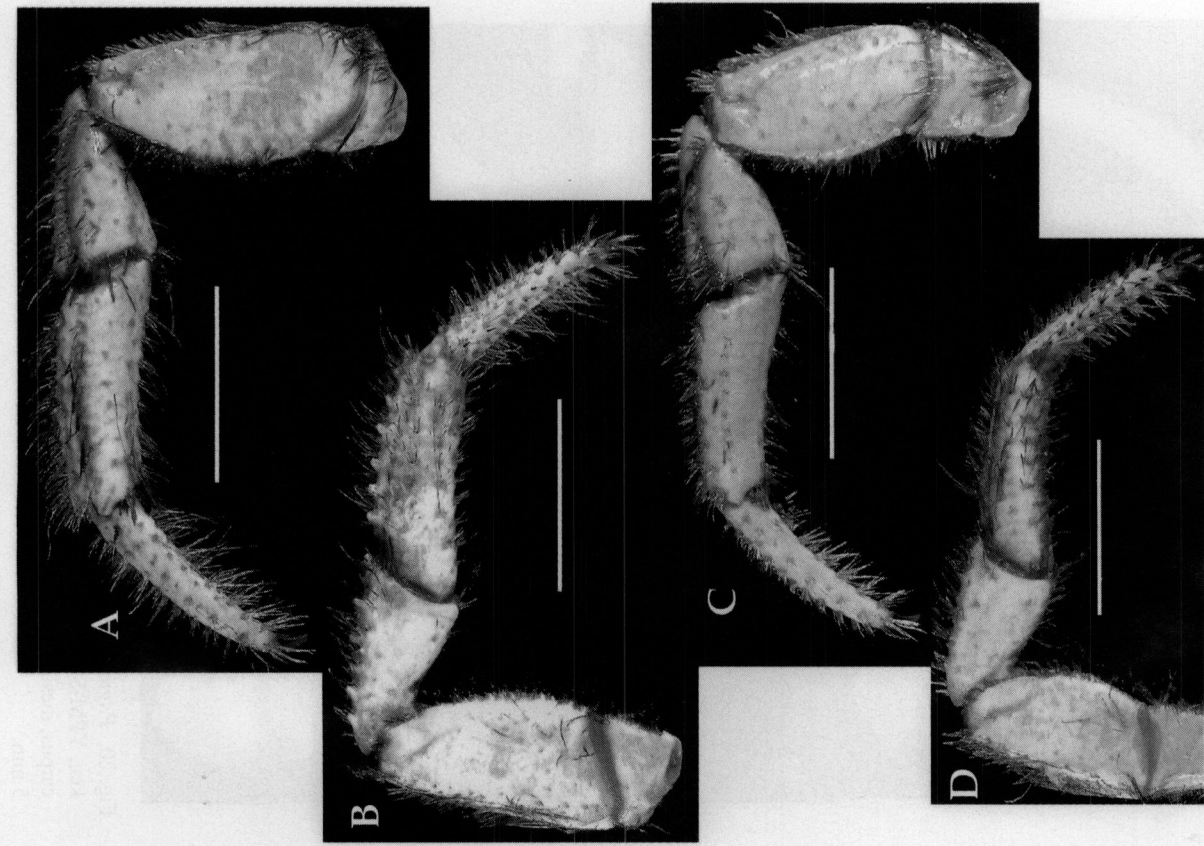


Fig. 22. *Paguristes japonicus* Miyake, 1961: ♂, SL = 9.20 mm, Oga Peninsula, Akita-ken, OMNH Ar 2133. A, left second pereopod, lateral; B, same, mesial; C, left third pereopod, lateral; D, same, mesial. Setae partially cut off. Scales equal 5 mm.

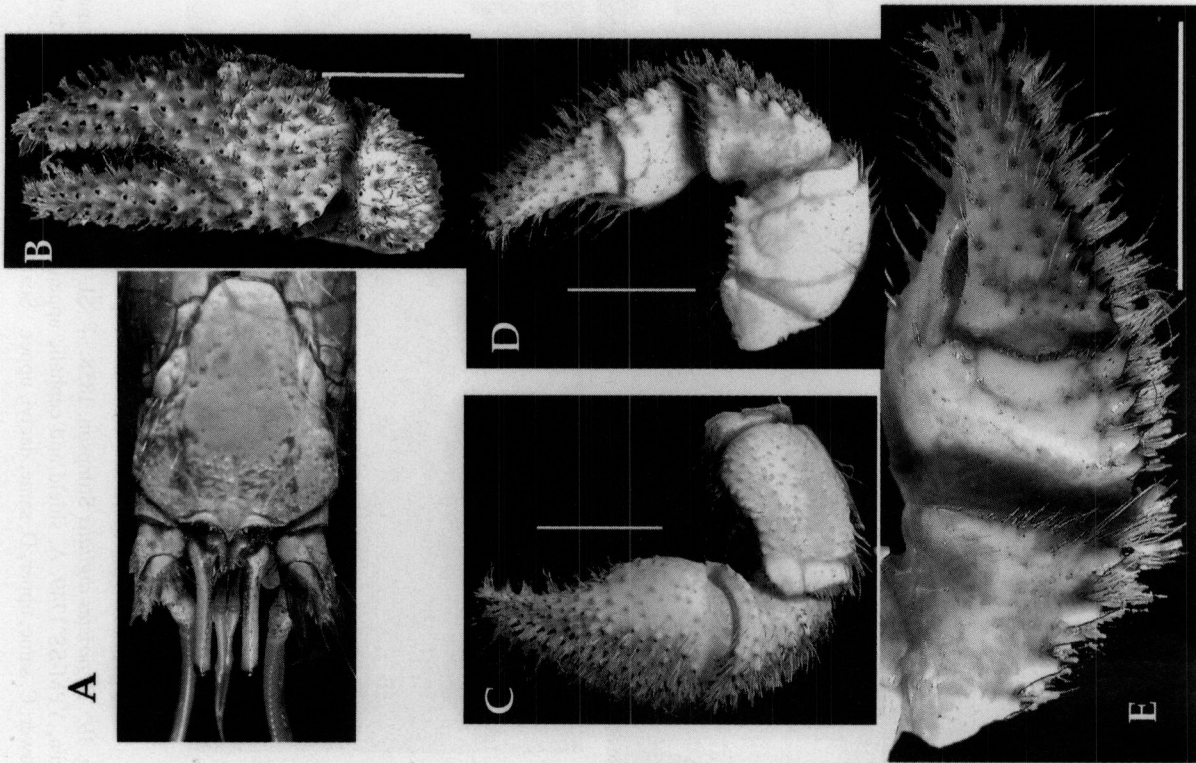


Fig. 21. *Paguristes japonicus* Miyake, 1961: ♂, SL = 9.20 mm, Oga Peninsula, Akita-ken, OMNH Ar 2133. A, shield and cephalic appendages, dorsal; B, right cheliped, chela and carpus, outer; C, same, lower; D, same, upper; E, same, chela and carpus, upper. Scales equal 5 mm.

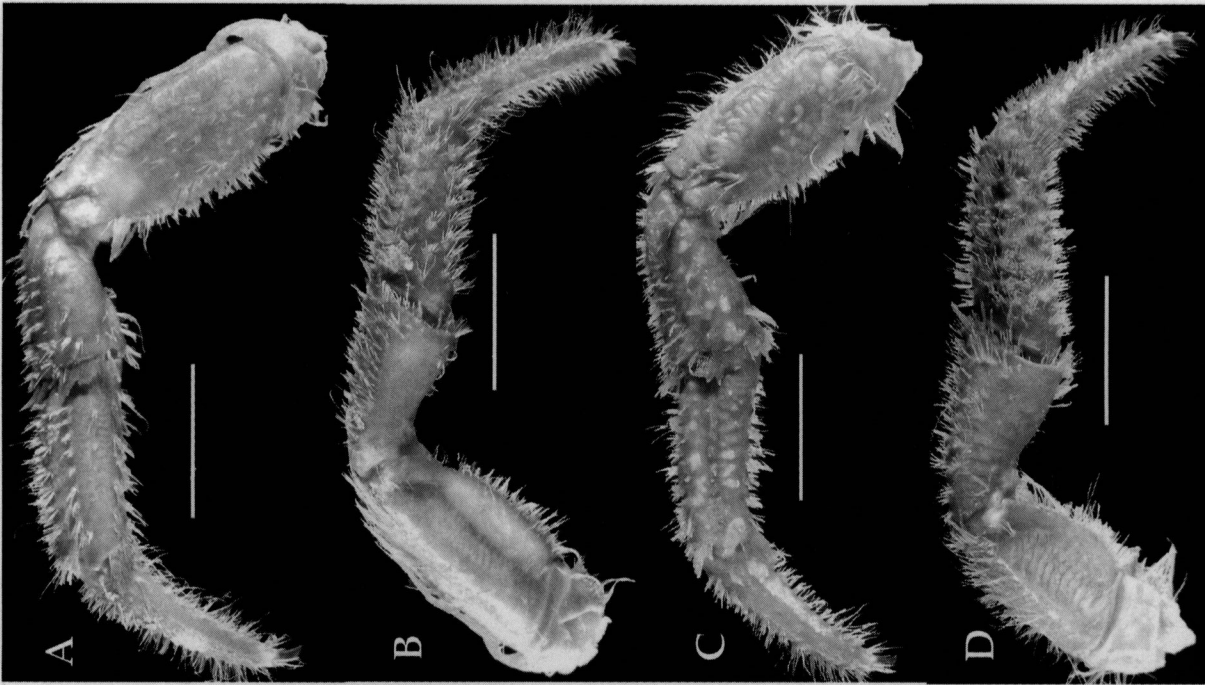


Fig. 24. *Paguristes ortmanni* Miyake, 1978: ♂, SL = 12.30 mm, Tango Peninsula, Kyoto-fu, CBM-ZC 8449. A, left second pereopod, lateral; B, same, mesial; C, left third pereopod, lateral; D, same, mesial. Setae partially cut off. Scales equal 5mm.

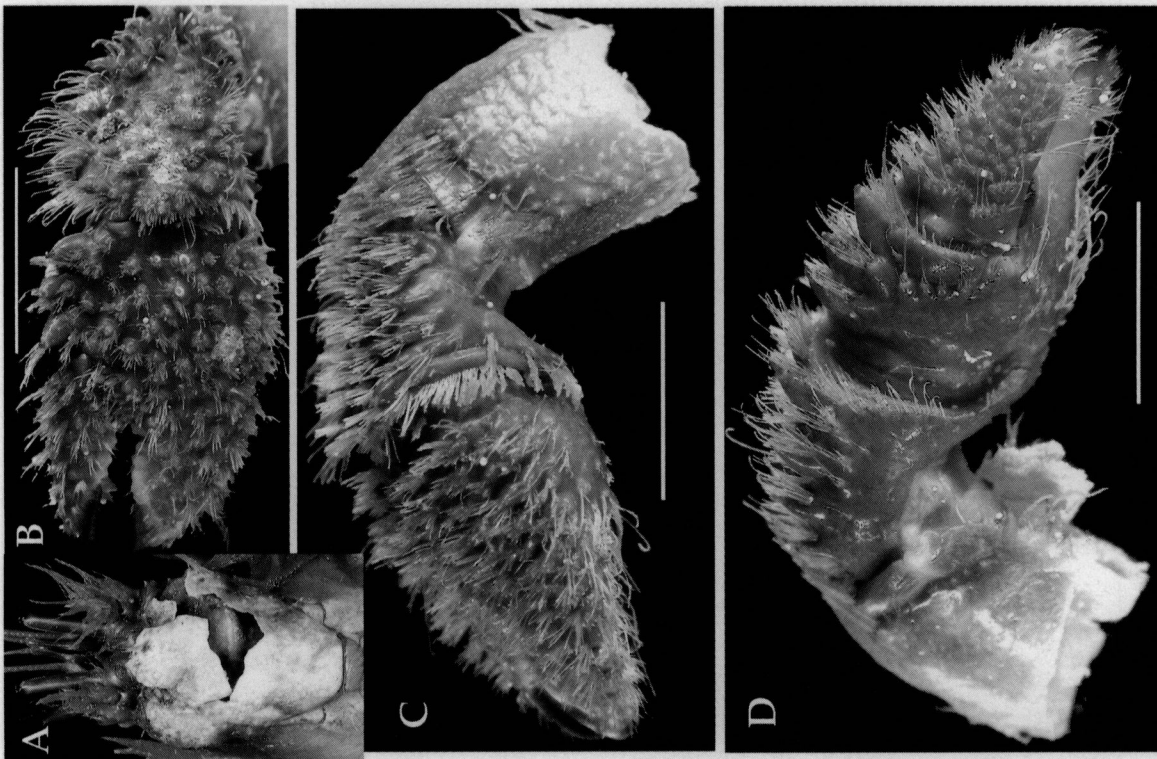


Fig. 23. *Paguristes ortmanni* Miyake, 1978: ♂, SL = 12.30 mm, Tango Peninsula, Kyoto-fu, CBM-ZC 8449. A, shield and cephalic appendages, dorsal (partially broken); B, left cheliped, outer; C, same, lower; D, same, upper. Setae partially cut off in B-D. Scales equal 5 mm.

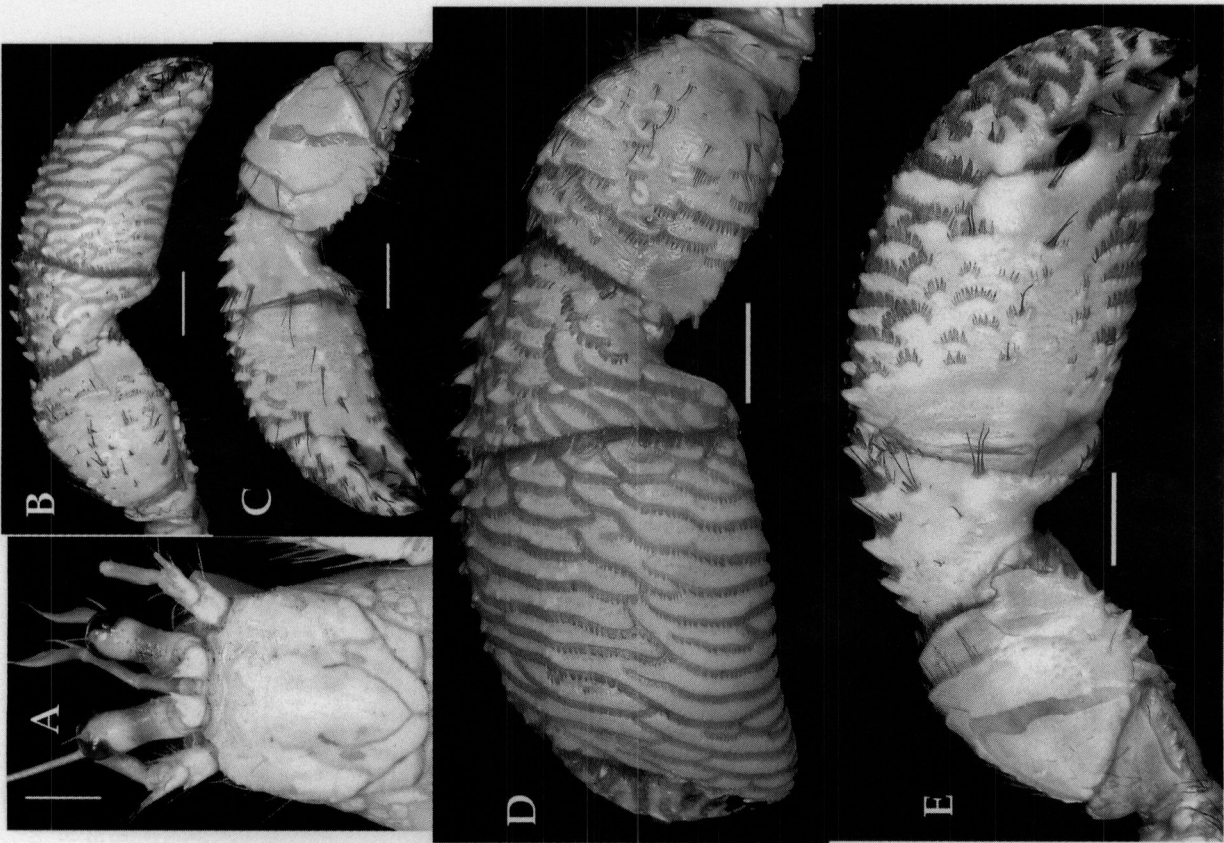


Fig. 25. *Dardanus arrosor* (Herbst, 1796): ov. ♀, SL = 14.55 mm, Sado Island, Niigata-ken, SMIBL-NU 22487. A, shield and cephalic appendages, dorsal; B, right cheliped, outer; C, same, inner; D, left cheliped, outer; E, same, inner. Scales equal 5 mm.

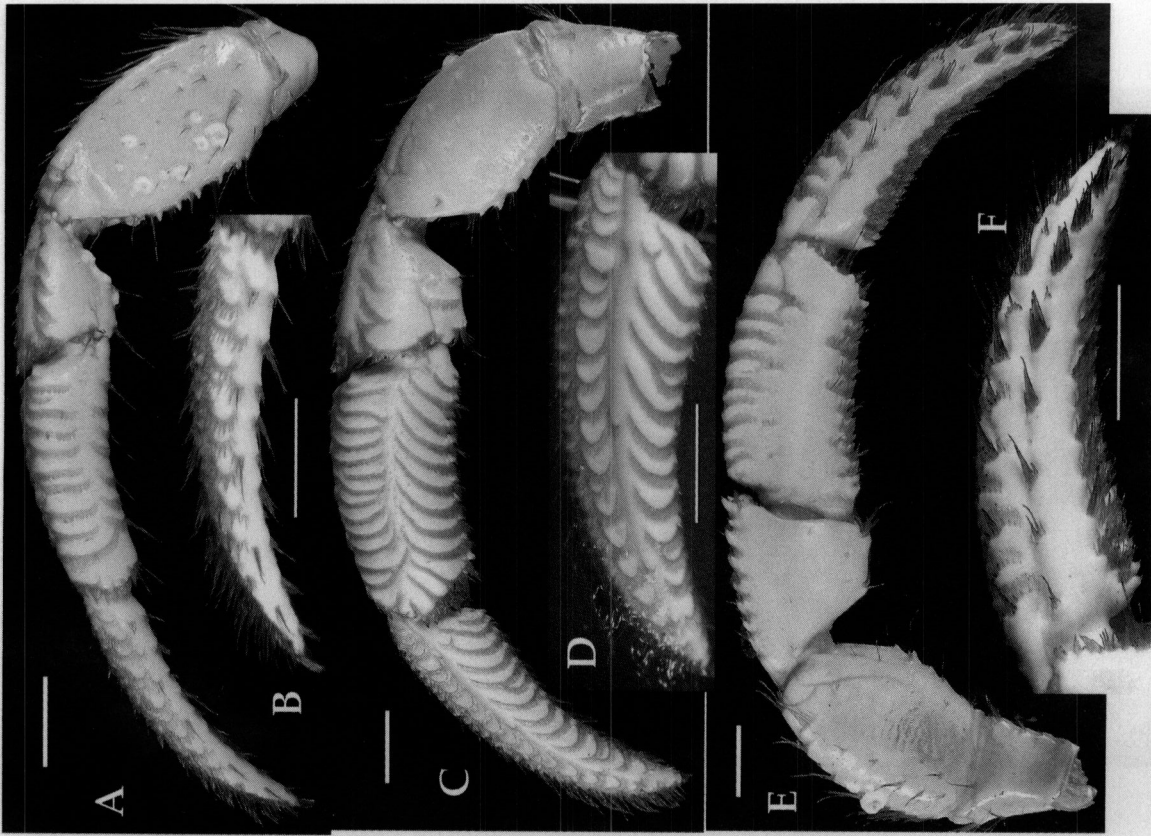


Fig. 26. *Dardanus arrosor* (Herbst, 1796): ov. ♀, SL = 14.55 mm, Sado Island, Niigata-ken, SMIBL-NU 22487. A, left second pereopod, lateral; B, same, dactyl, lateral; C, left third pereopod, lateral; D, same, dactyl, lateral; E, left third pereopod, mesial; F, same, dactyl, mesial. Scales equal 5 mm.

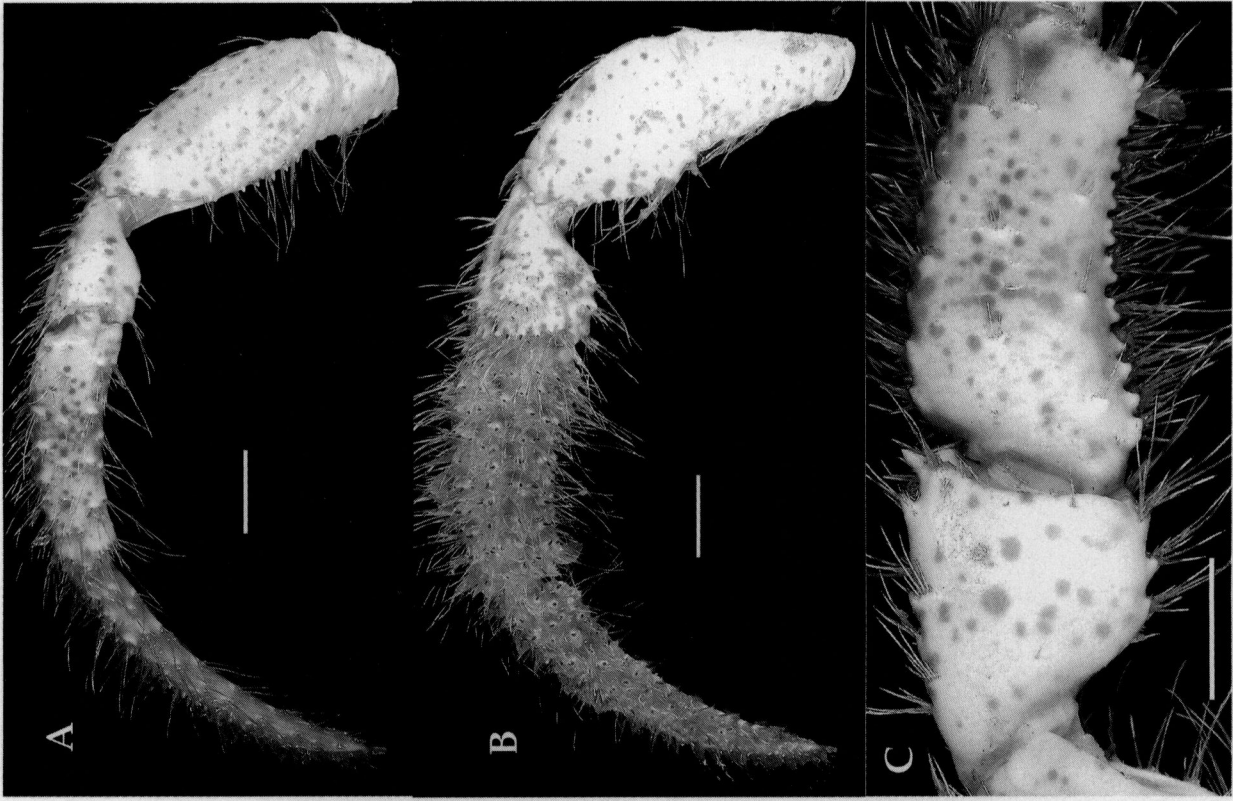


Fig. 28. *Dardanus aspersus* (Berthold, 1845): ♂, SL = 18 mm, Toyama-shi, Toyama-ken, TOYA Z97-13. A, left second pereopod, lateral; B, left third pereopod, lateral; C, same, propodus and carpus, mesial. Scales equal 5 mm.

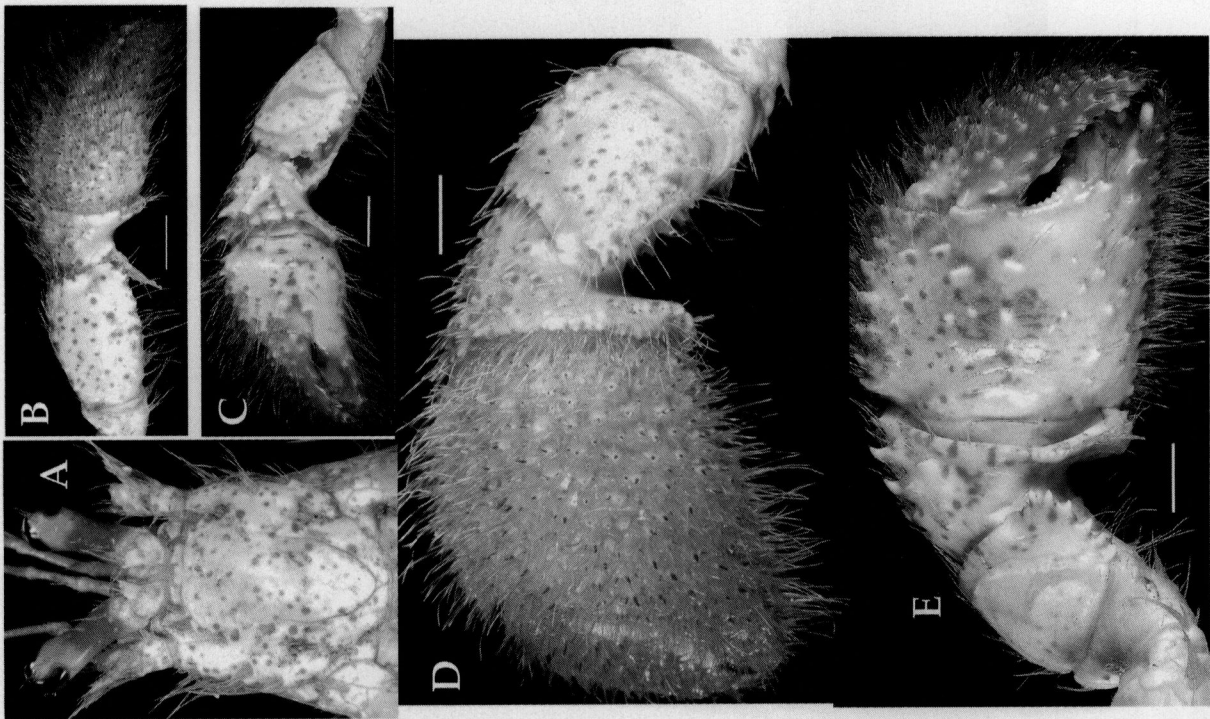


Fig. 27. *Dardanus aspersus* (Berthold, 1845): ♂, SL = 18 mm, Toyama-shi, Toyama-ken, TOYA Z97-13. A, shield and cephalic appendages, dorsal; B, right cheliped, outer; C, same, inner; D, left cheliped, outer; E, same, inner. Scales equal 5 mm.

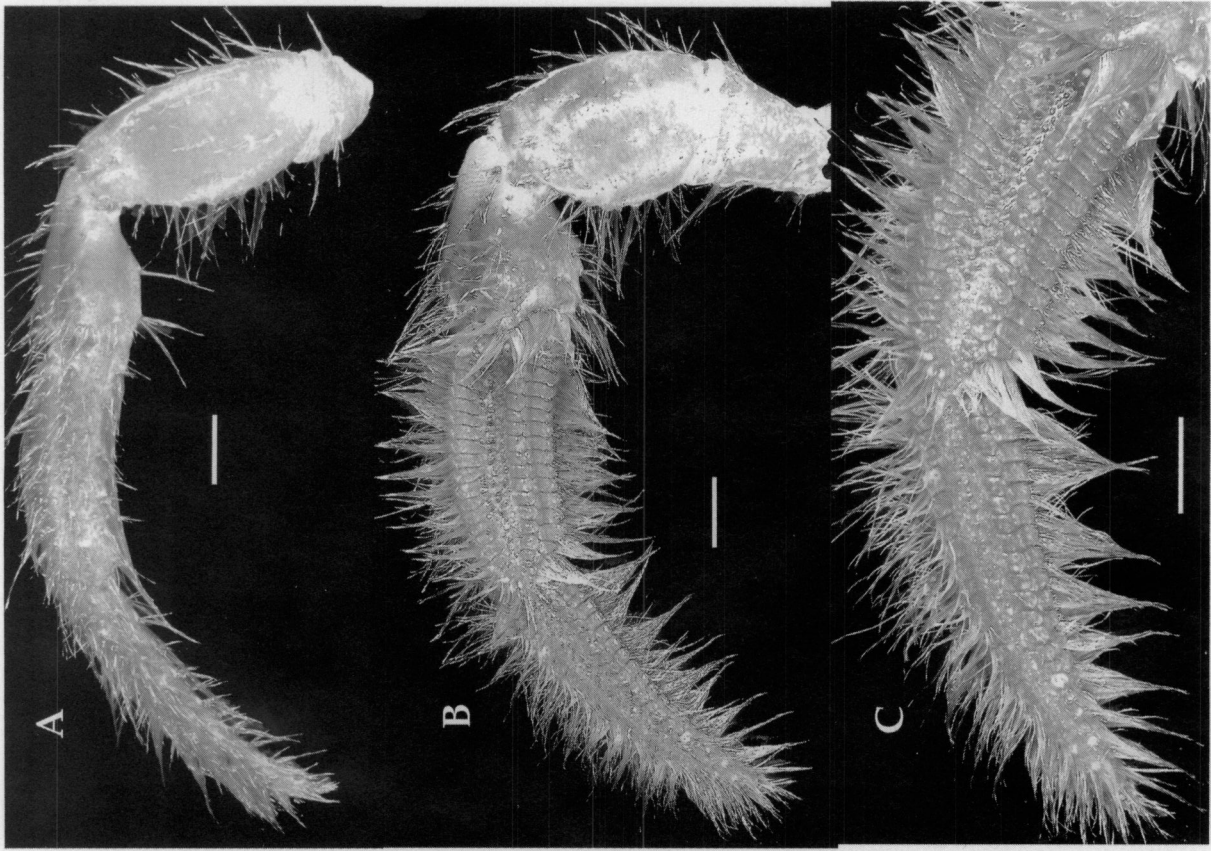


Fig. 30. *Dardanus crassimanus* (H. Milne Edwards, 1836): ♂, SL = 22.75 mm, Kammurijima Island, Kyoto-fu, CBM-ZC 8458. A, left third pereopod, lateral; B, left third pereopod, lateral; C, same, dactyl and propodus, lateral. Scales equal 5 mm.

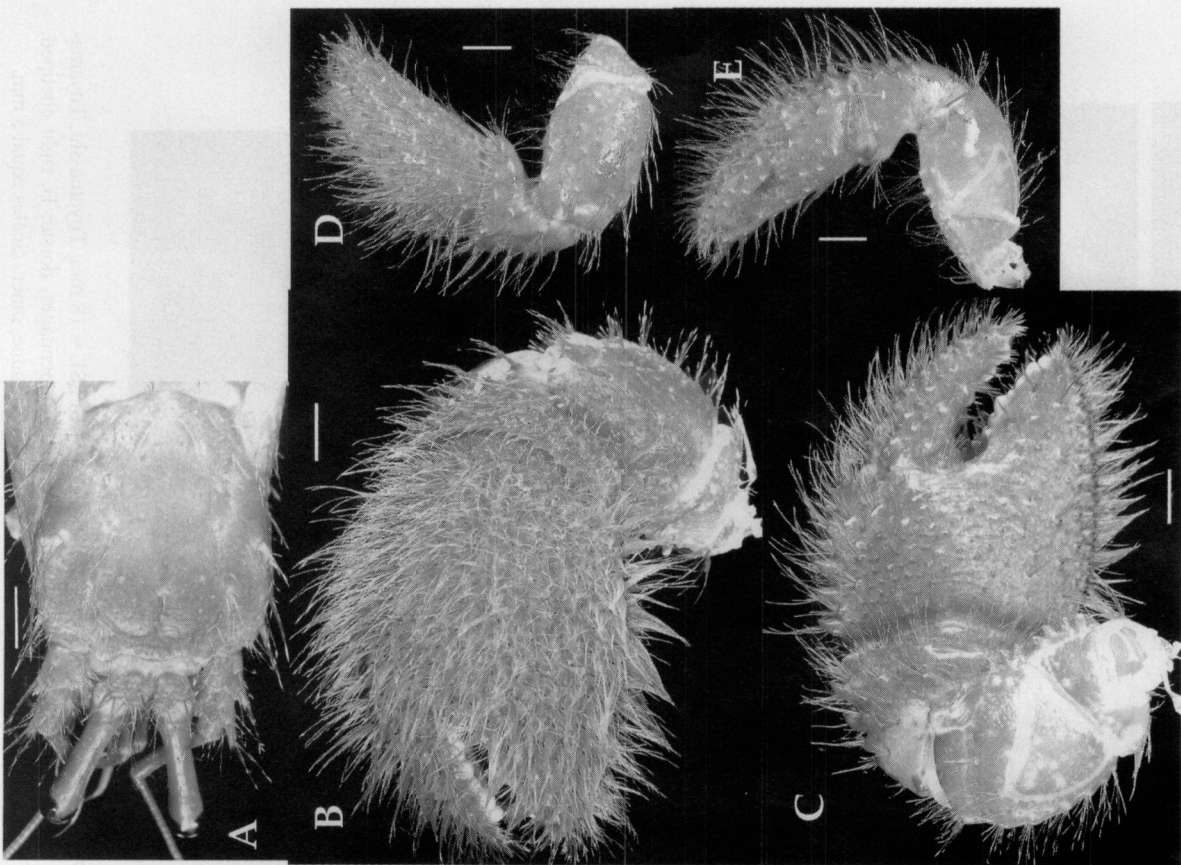


Fig. 29. *Dardanus crassimanus* (H. Milne Edwards, 1836): ♂, SL = 22.75 mm, Kammurijima Island, Kyoto-fu, CBM-ZC 8458. A, shield and cephalic appendages, dorsal; B, left cheliped, outer; C, same, inner; D, right cheliped, outer; E, same, inner (chela, slightly upper). Scales equal 5 mm.

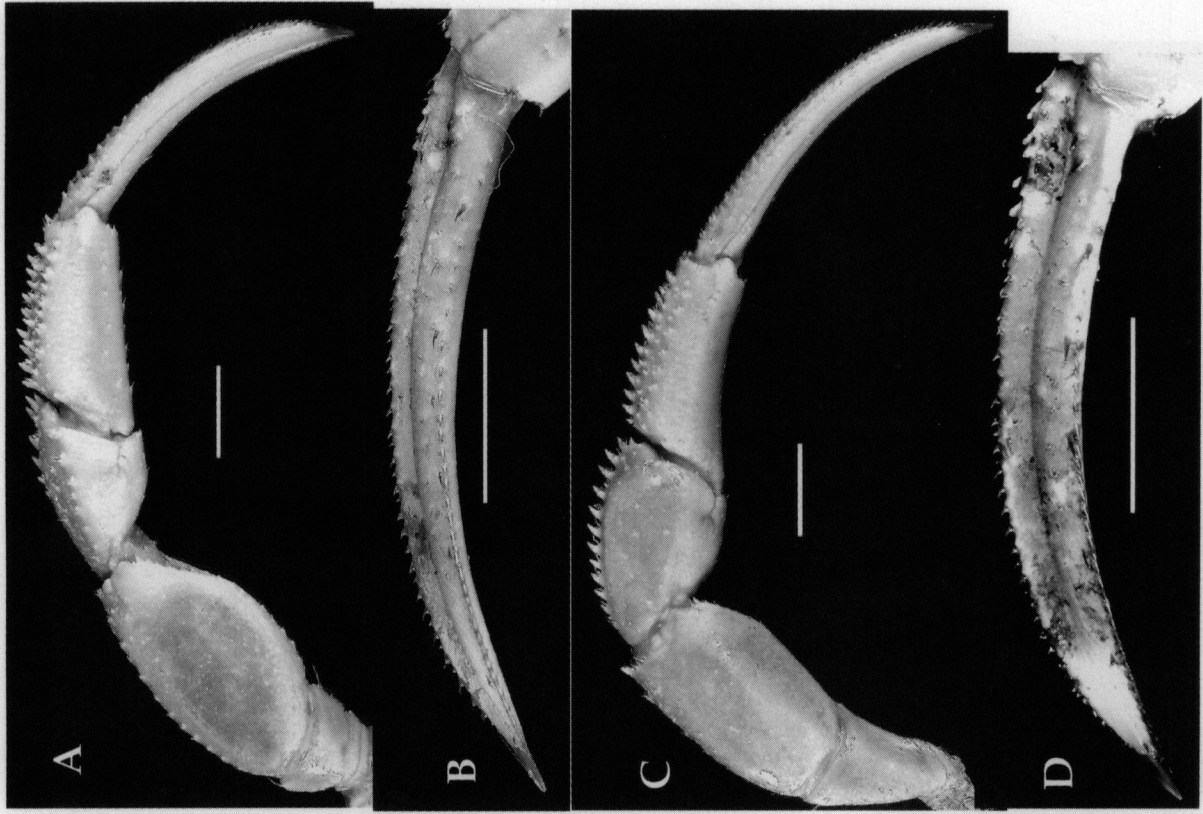


Fig. 32. *Pagurus ochotensis* Brandt, 1851: ♀, SL = 12.80 mm, Mogami-tai, Yamagata-ken, YPM-SS 1724. A, right second pereopod, lateral; B, same, dactyl, mesial; C, right third pereopod, lateral; D, same, dactyl, mesial. Scales equal 5 mm.

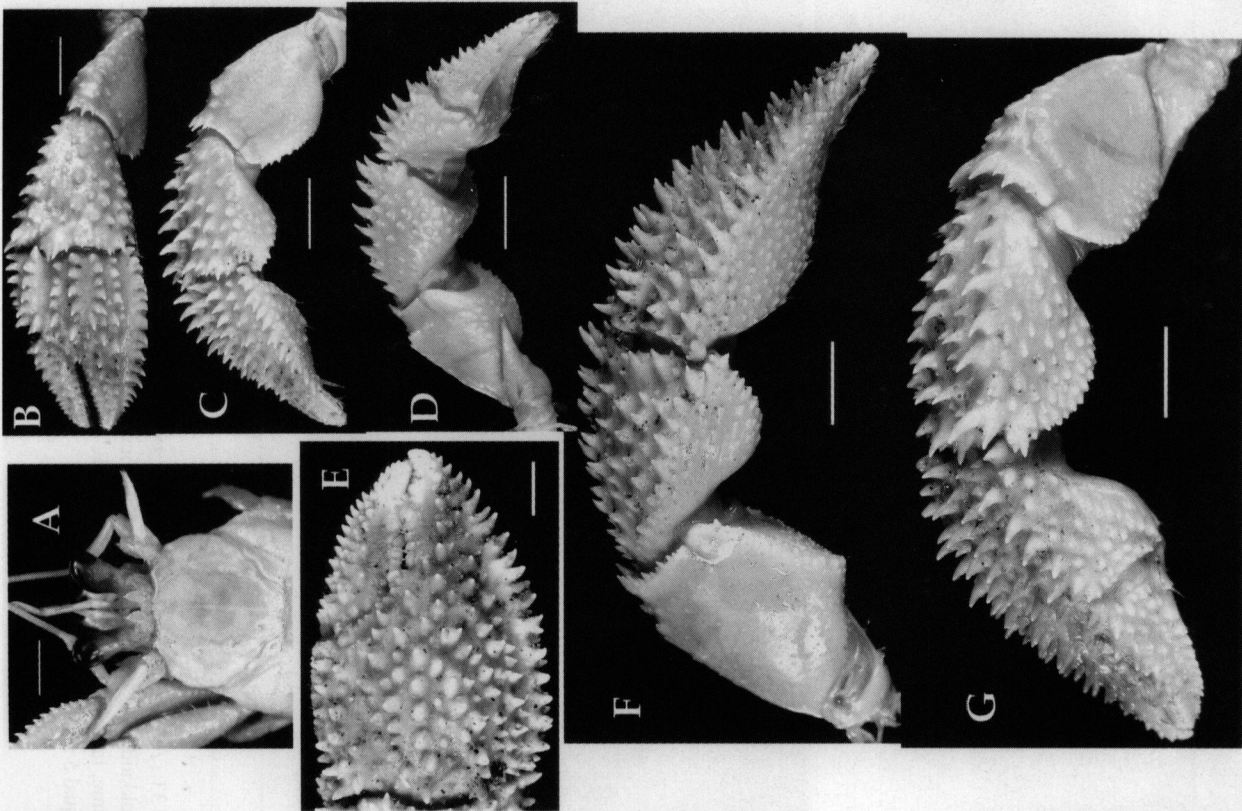


Fig. 31. *Pagurus ochotensis* Brandt, 1851: ♀, SL = 12.80 mm, Mogami-tai, Yamagata-ken, YPM-SS 1724. A, shield and cephalic appendages, dorsal; B, left cheliped, dorsal; C, same, lateral; D, same, mesial; E, right cheliped, chela, dorsal; F, same, lateral; G, same, mesial. Scales equal 5 mm.

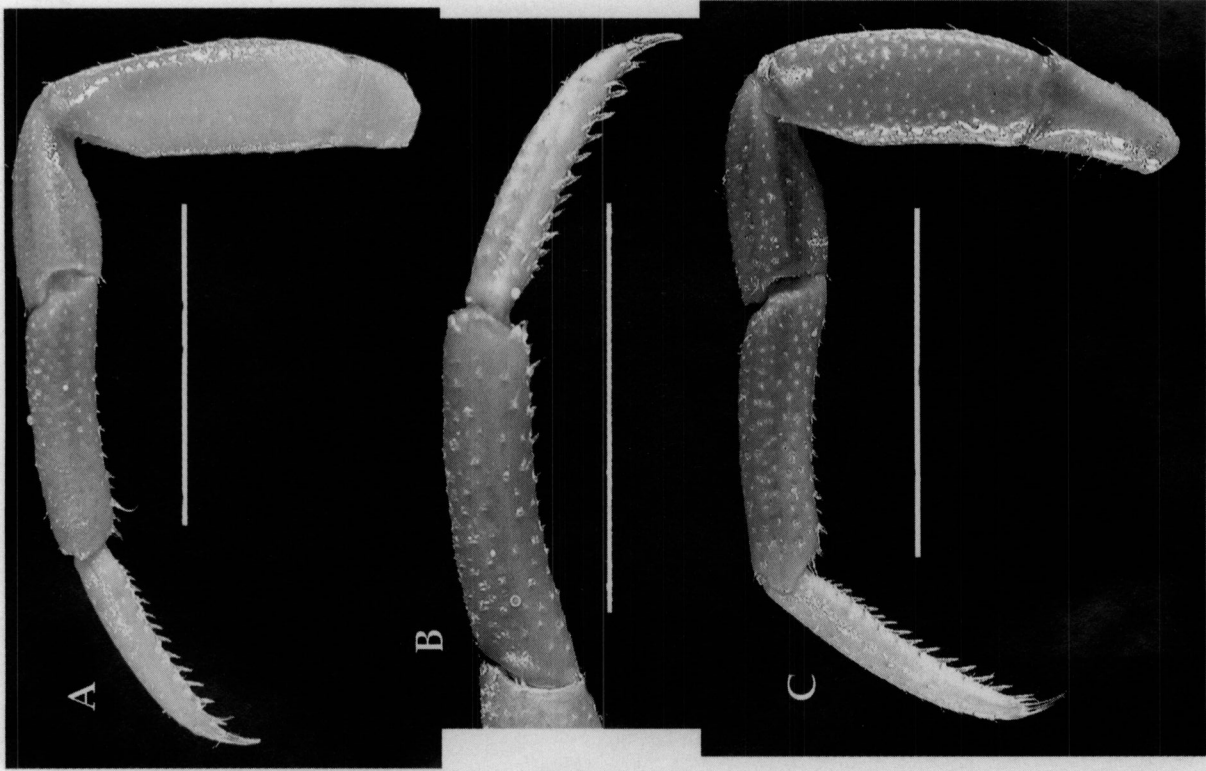


Fig. 34. *Pagurus middendorffii* Brandt, 1851: ♂, SL = 4.20 mm, Shakotan Peninsula, Hokkaido. A, left second pereopod, lateral; B, same, dactyl and propodus, mesial; C, right third pereopod, lateral. Scales equal 5 mm.

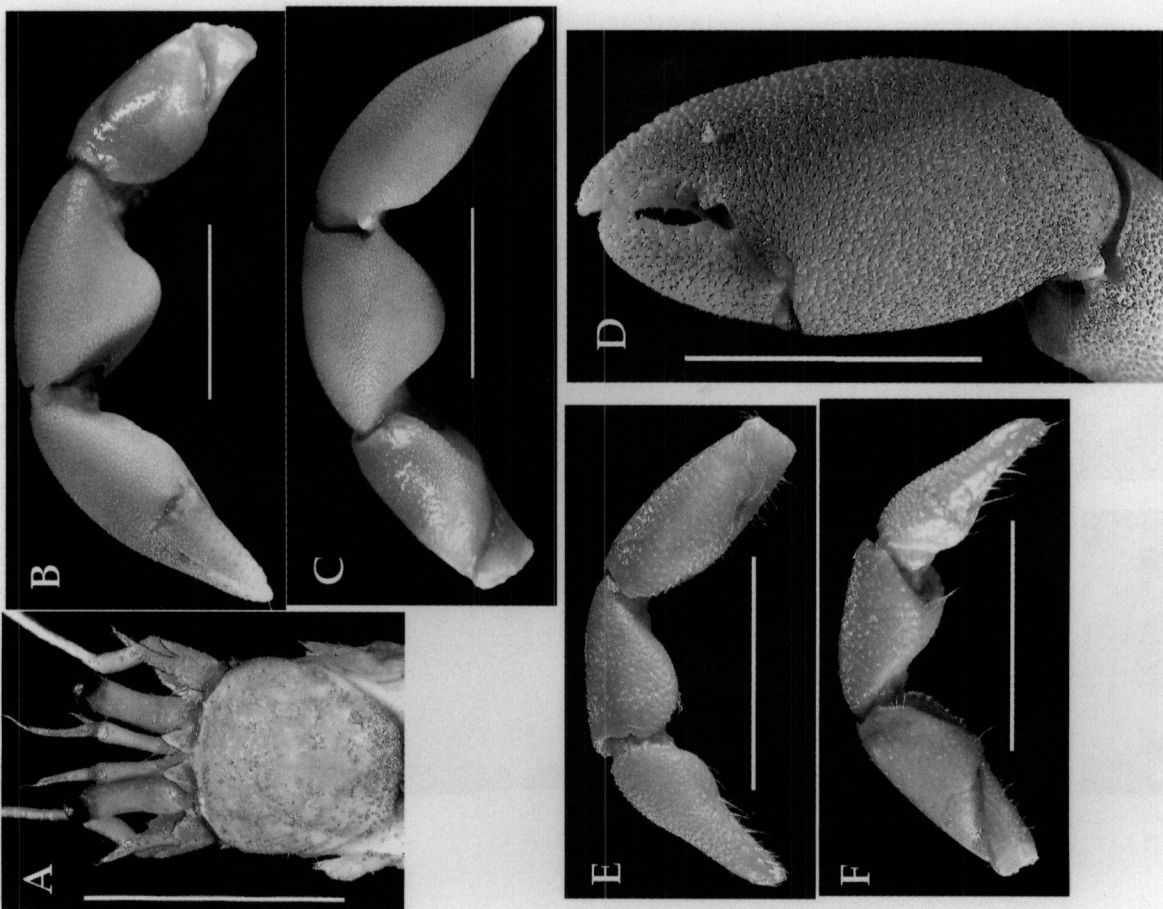


Fig. 33. *Pagurus middendorffii* Brandt, 1851: ♂, SL = 4.20 mm, Shakotan Peninsula, Hokkaido. A, shield and cephalic appendages, dorsal; B, right cheliped, mesial; C, same, lateral; D, same, chela, dorsal; E, left cheliped, lateral; F, same, mesial. Scales equal 5 mm.



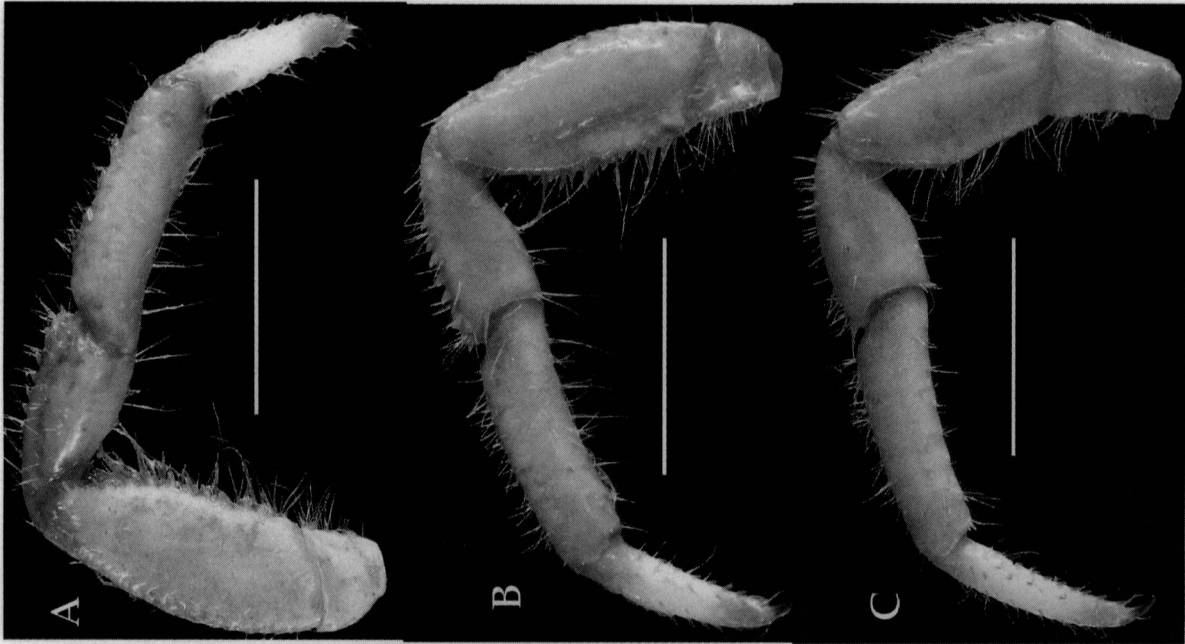


Fig. 36. *Pagurus filholi* De Man, 1887: ♂, SL = 6.90 mm, Takaoka-shi, Toyama-ken, TOYA Z87-17-b. A, right second pereopod, lateral; B, same, mesial; C, right third pereopod, mesial. Scales equal 5 mm.

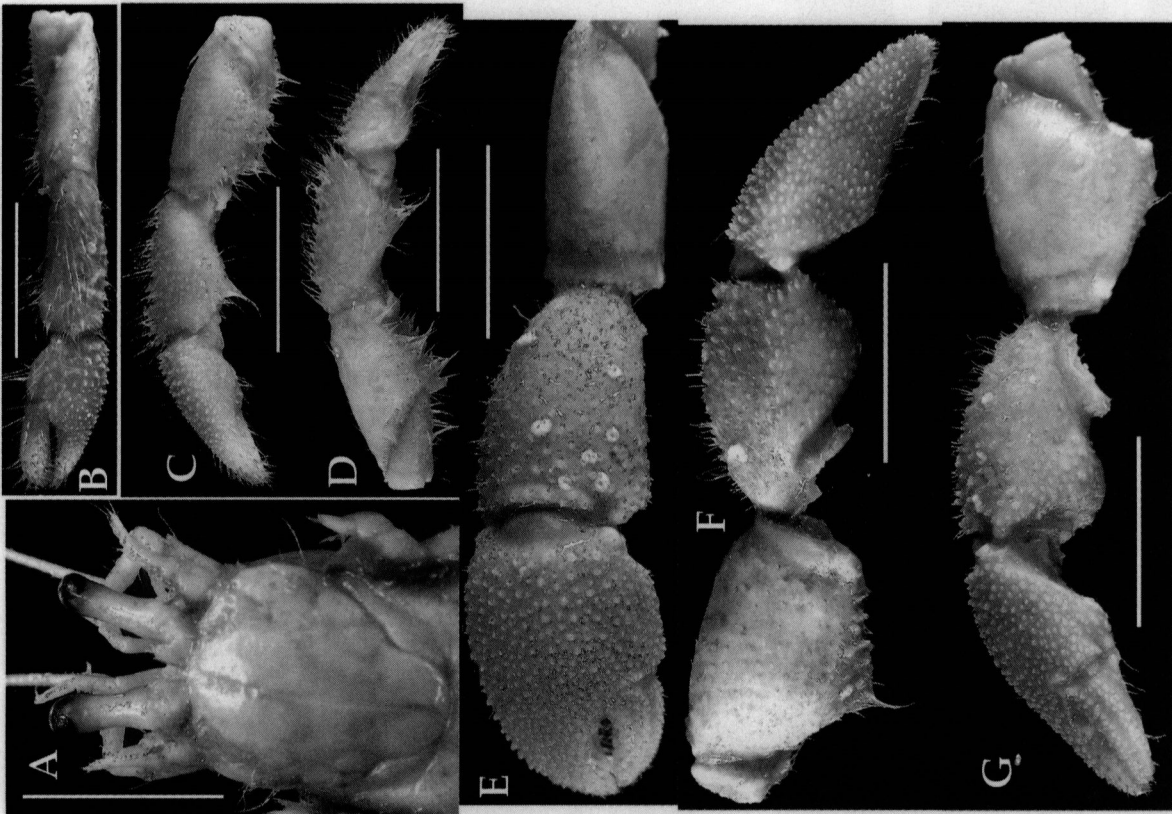


Fig. 35. *Pagurus filholi* De Man, 1887: ♂, SL = 6.90 mm, Takaoka-shi, Toyama-ken, TOYA Z87-17-b. A, shield and cephalic appendages, dorsal; B, left cheliped, dorsal; C, same, lateral; D, same, mesial; E, right cheliped, dorsal; F, same, lateral; G, same, mesial. Scales equal 5 mm.



Fig. 37. *Pagurus minutus* Hess, 1865: ♂, SL = 5.70 mm, Amanohashidate, Kyoto-fu, CBM-ZC 8464. A, shield and cephalic appendages, dorsal; B, left cheliped, dorsal; C, same, mesial; D, right cheliped, dorsal; E, same, lateral; F, same, mesial. Scales equal 5 mm.



Fig. 38. *Pagurus minutus* Hess, 1865: ♂, SL = 5.70 mm, Amanohashidate, Kyoto-fu, CBM-ZC 8464. A, right second pereopod, lateral; B, same, dactyl, propodus and carpus, mesial; C, right third pereopod, lateral; D, same, dactyl, mesial; E, same, carpus, mesial. Scales equal 5 mm.

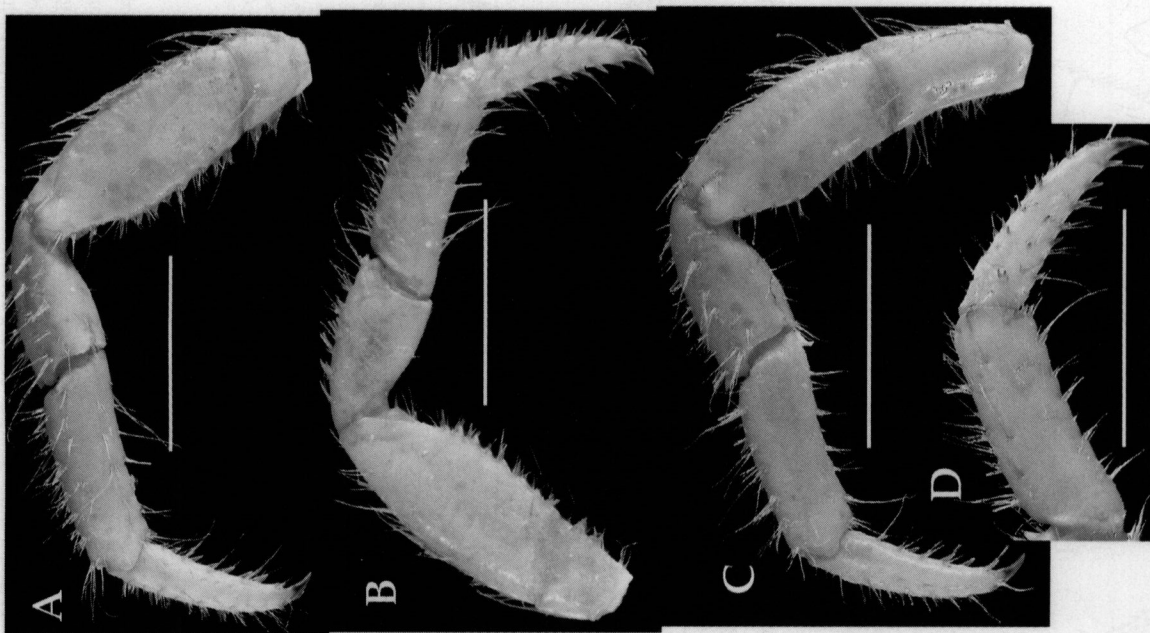


Fig. 40. *Pagurus lamuginosus* De Haan, 1849: ♂, SL = 7.55 mm, Himi-shi, Toyama-ken, TOYA Z78-59-a. A, left second pereopod, lateral; B, same, mesial; C, left third pereopod, lateral; D, same, dactyl and propodus, mesial. Scales equal 5 mm.

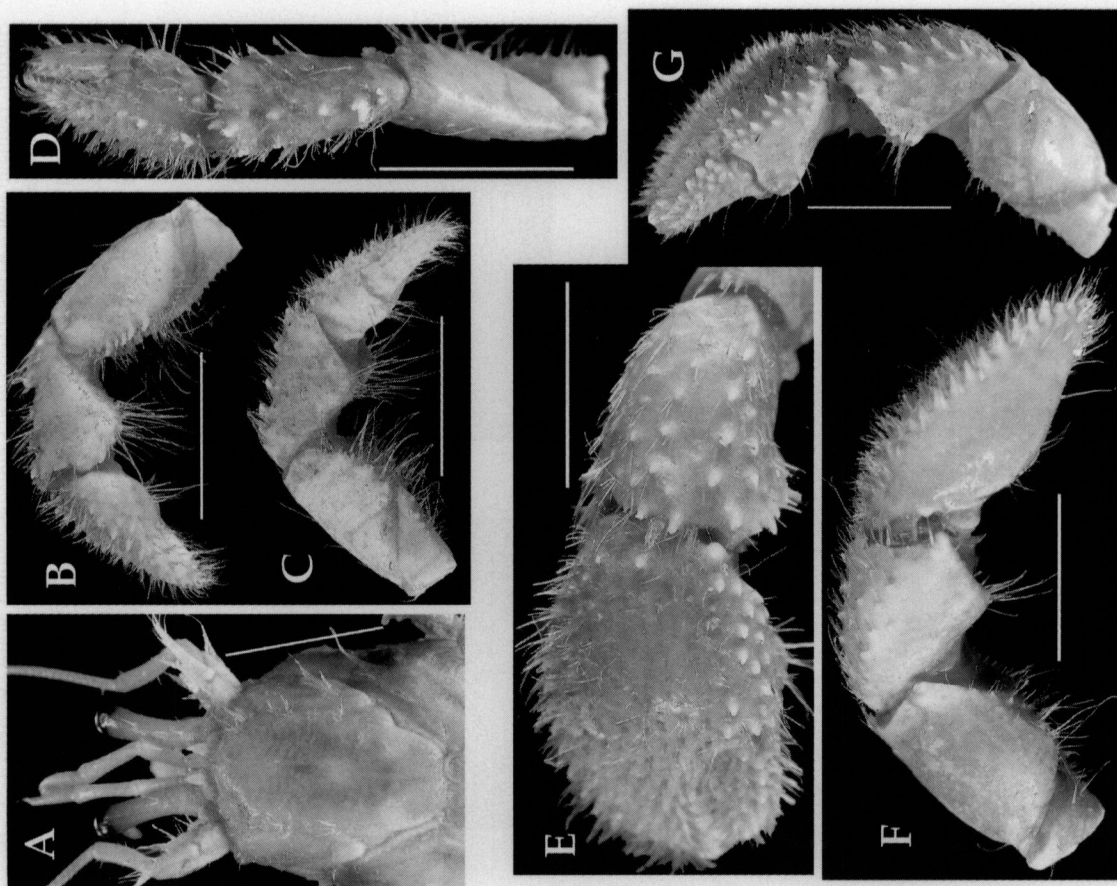


Fig. 39. *Pagurus lamuginosus* De Haan, 1849: ♂, SL = 7.55 mm, Himi-shi, Toyama-ken, TOYA Z78-59-a. A, shield and cephalic appendages, dorsal; B, left cheliped, lateral; C, same, mesial; D, right cheliped, dorsal; E, right cheliped, dorsal; F, same, lateral; G, same, mesial. Scales equal 5 mm.