

1

2

3

PLATE XLIV

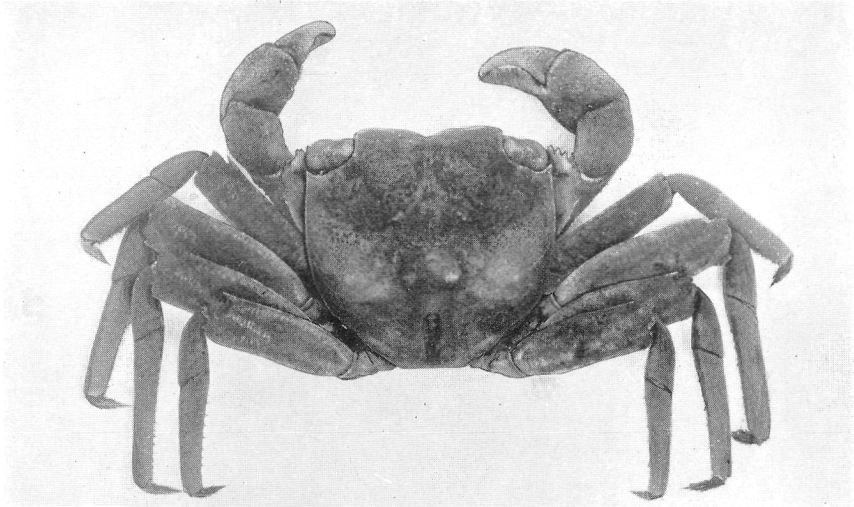
*Sesarma (Holometopus) elegans*, A. M. N. H. No. 3274

Fig. 1. Male, 21 mm. wide, dorsal view.

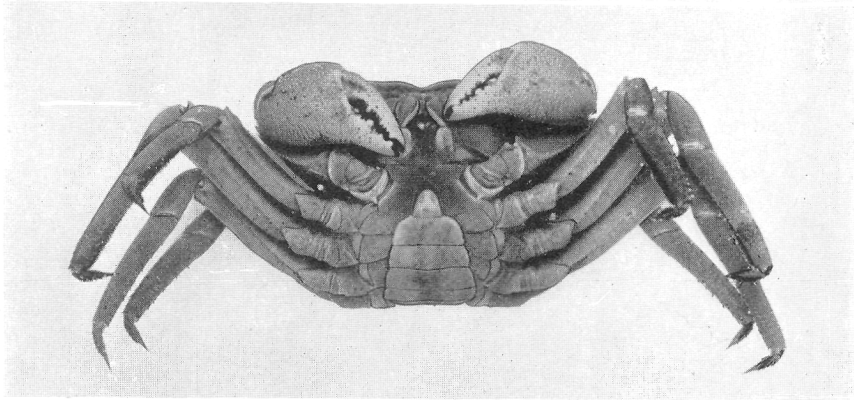
Fig. 2. A smaller male, ventral view.

Fig. 3. Female, ventral view.

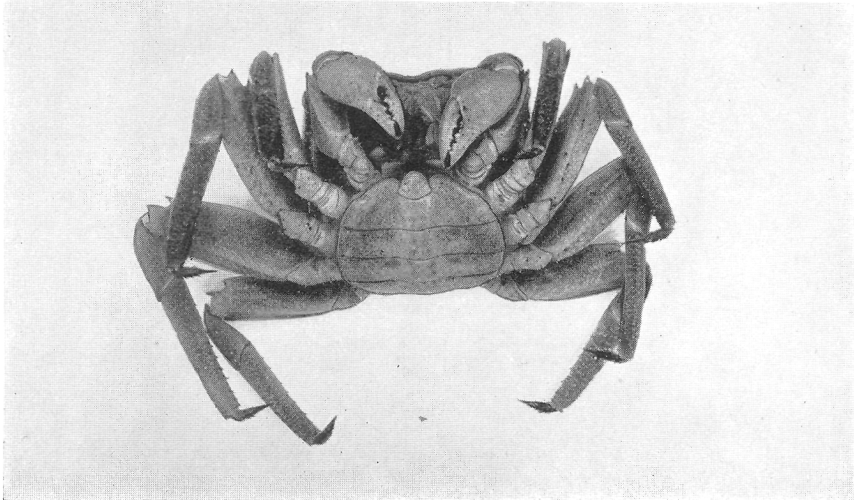
All figures to same scale.



1



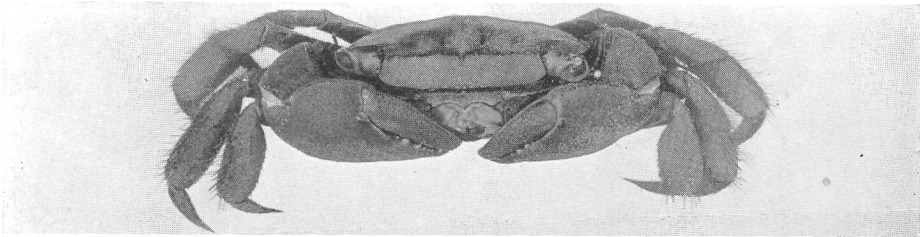
2



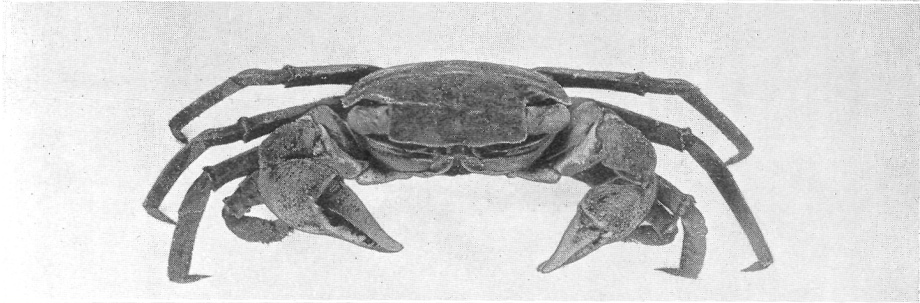
3

PLATE XLV

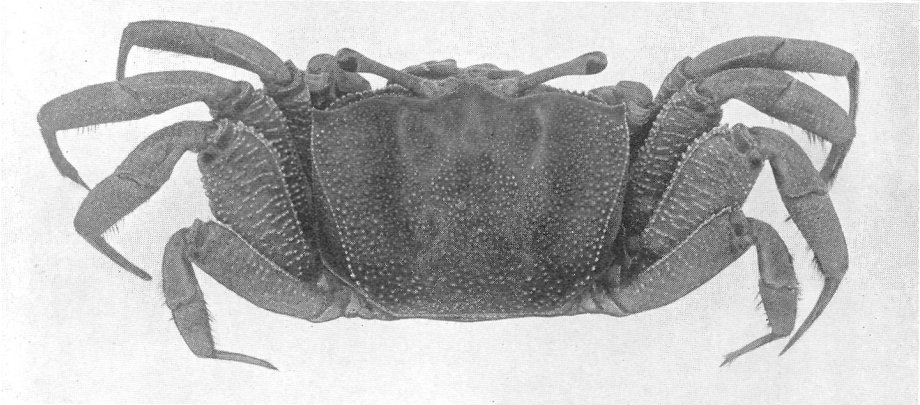
- Fig. 1. *Sesarma (Holometopus) angolense*, male, A. M. N. H. No. 3278, front view.
- Fig. 2. *Sesarma (Holometopus) elegans*, male, A. M. N. H. No. 3274, front view.
- Fig. 3. *Uca tangeri*, female, 29 mm. wide, A. M. N. H. No. 3275, dorsal view.
- Fig. 4. Same species and No., a smaller female, ventral view.



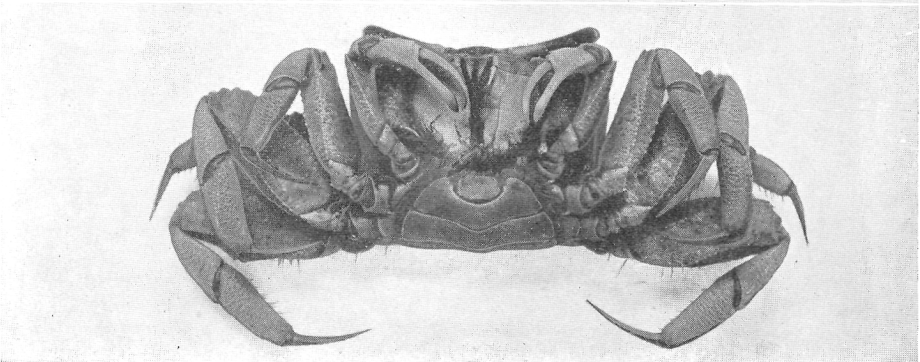
1



2



3



4

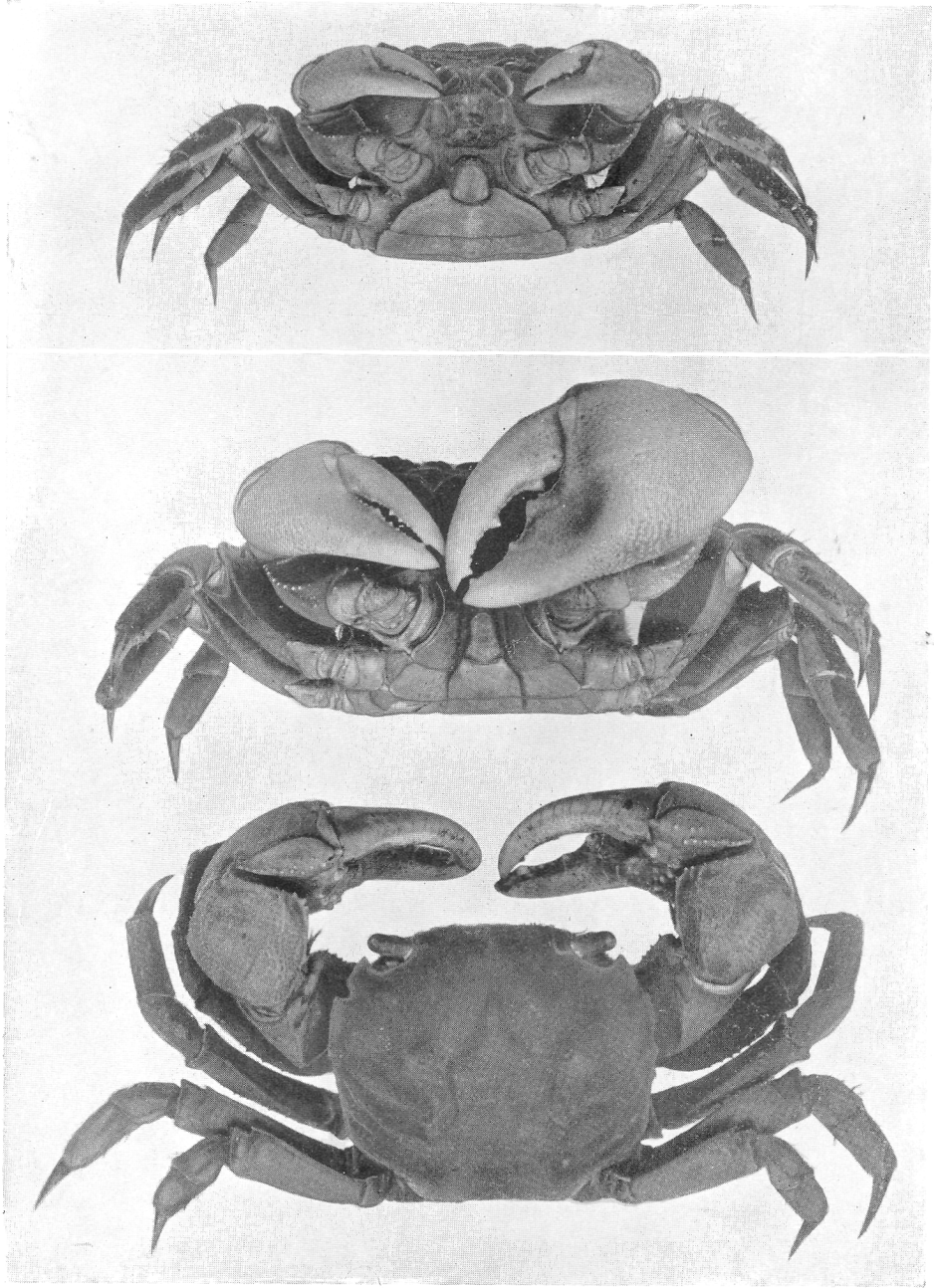
PLATE XLVI

*Sarmatium curvatum*, A. M. N. H. No. 3284

Fig. 1. Female, ventral view.

Fig. 2. Male, ventral view.

Fig. 3. Male, 36 mm. wide, dorsal view.



1

2

3

PLATE XLVII

Fig. 1. *Sarmatium curvatum*, male, 36 mm. wide, A. M. N. H. No. 3284, front view.

Figs. 2-4. *Cyclograpsus occidentalis*, A. M. N. H. No. 3276.

Fig. 2. Female, ventral view.

Fig. 3. Male, ventral view.

Fig. 4. Another male, 13.2 mm. wide, dorsal view.

Figs. 5-9. *Sesarma (Holometopus) büttikoferi*, A. M. N. H. No. 3277.

Fig. 5. Male, dorsal view.

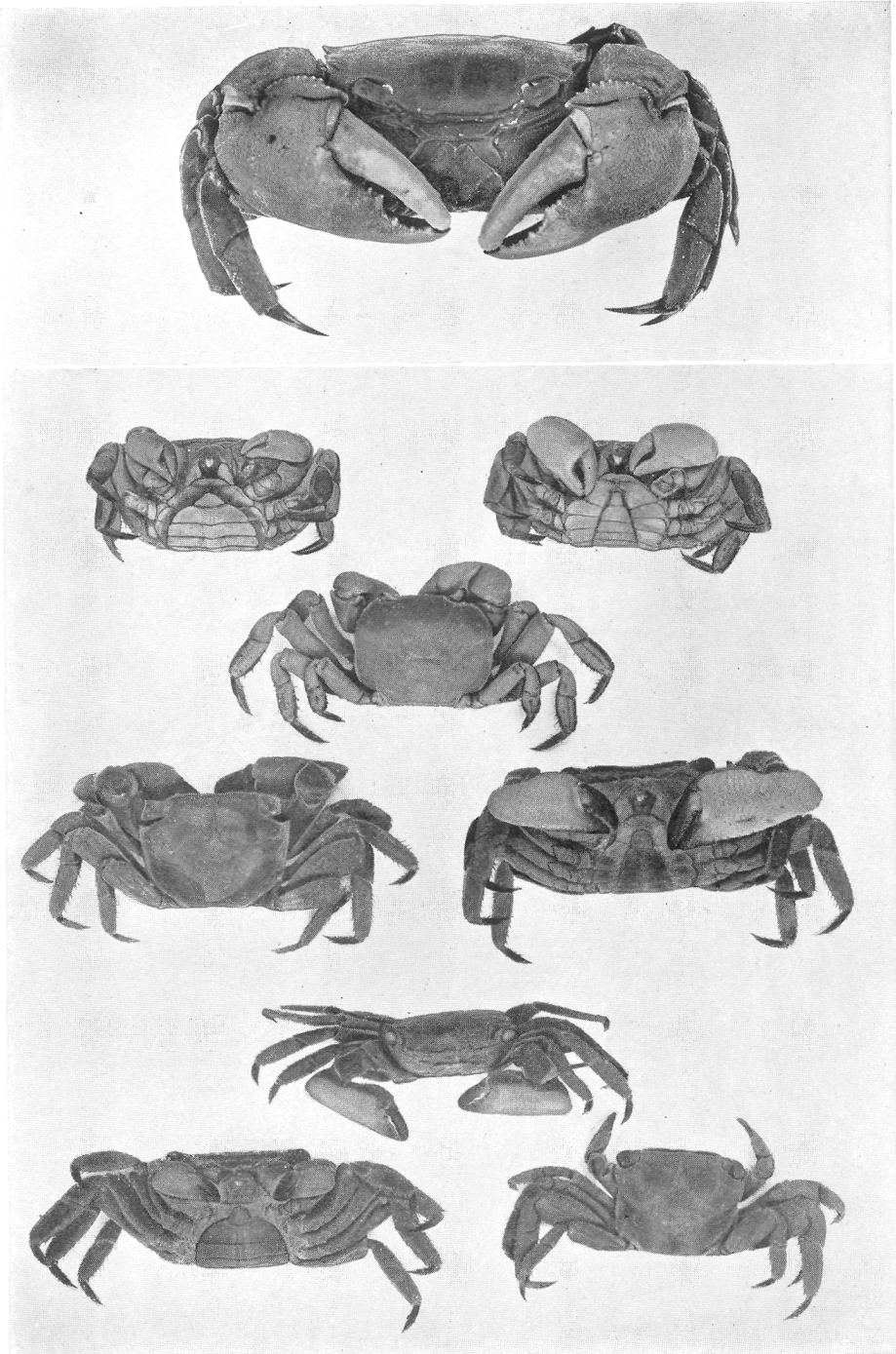
Fig. 6. Another male, ventral view.

Fig. 7. Still another male, front view.

Fig. 8. Female, ventral view.

Fig. 9. Female, dorsal view.





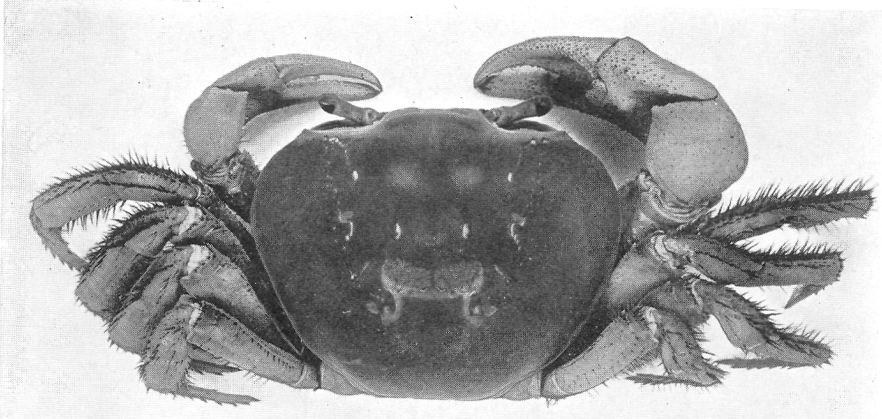
3

6

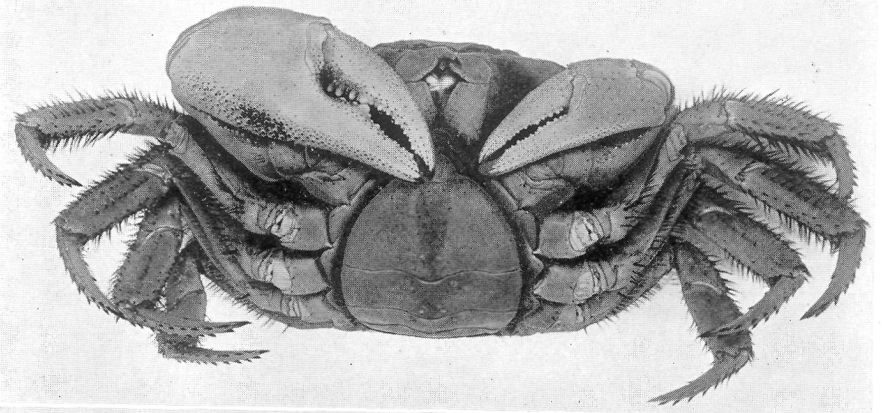
9

PLATE XLVIII

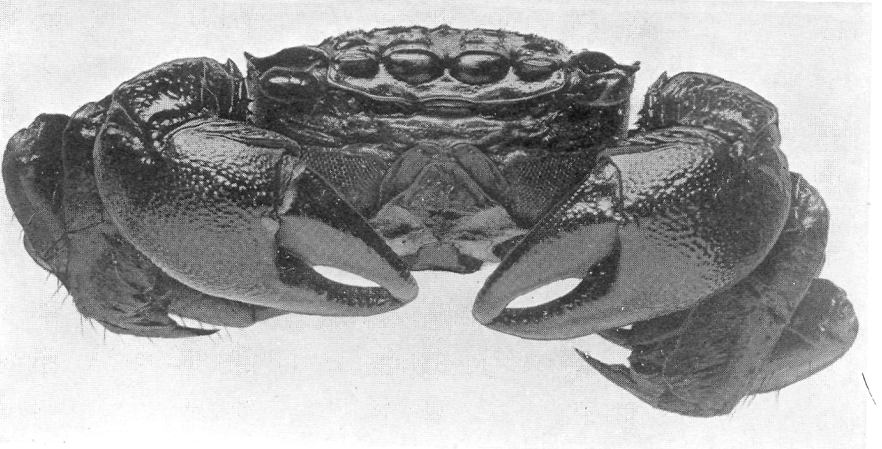
- Fig. 1. *Cardisoma armatum*, female, 95.6 mm. wide, A. M. N. H. No. 3273, dorsal view.
- Fig. 2. Same specimen, ventral view.
- Fig. 3. *Sesarma (Chiromantes) alberti*, male holotype, 34.3 mm. wide, front view.



1



2



3

PLATE XLIX

*Cardisoma armatum*; male, 117 mm. wide, A. M. N. H. No. 3273, dorsal view.

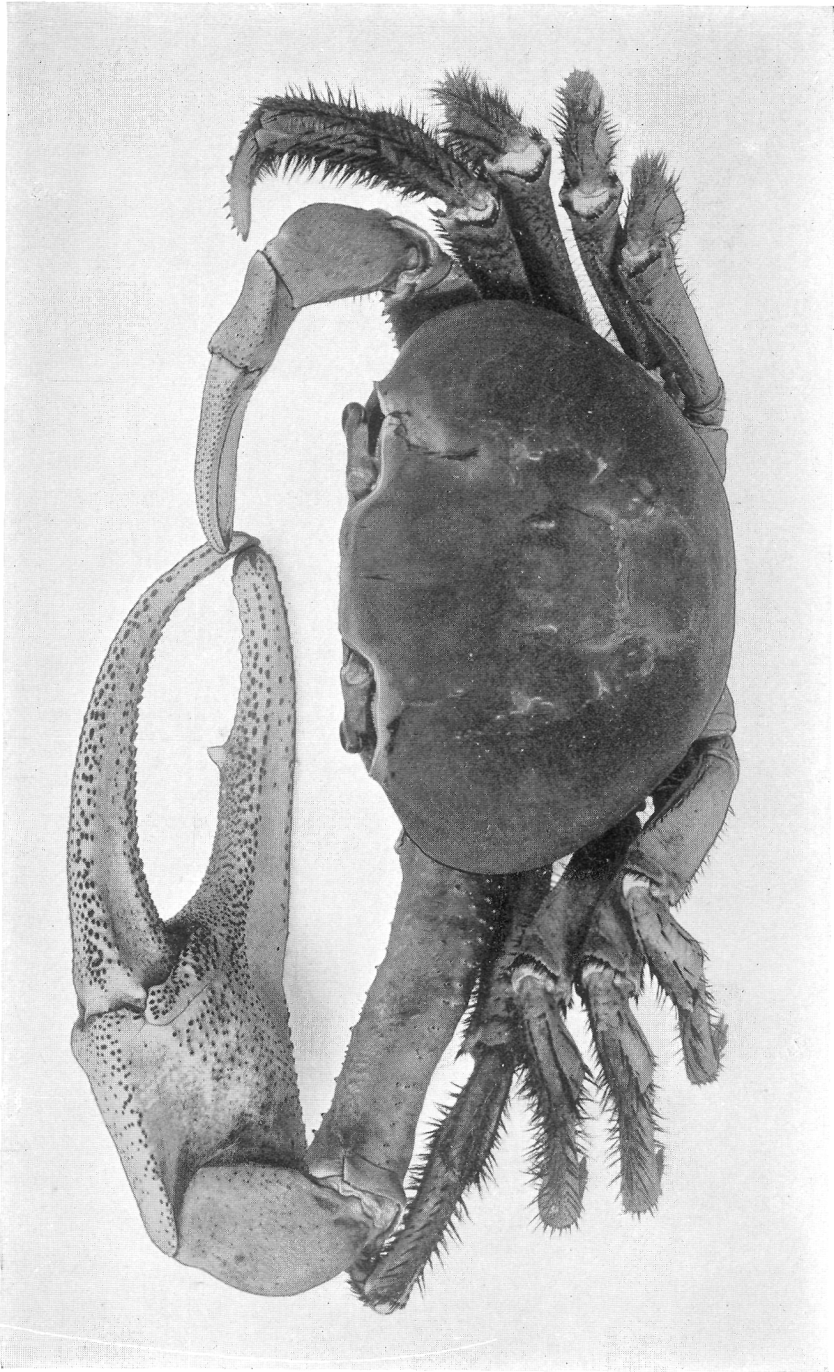


PLATE L

*Cardisoma armatum*, same specimen as Pl. XLIX, ventral view.

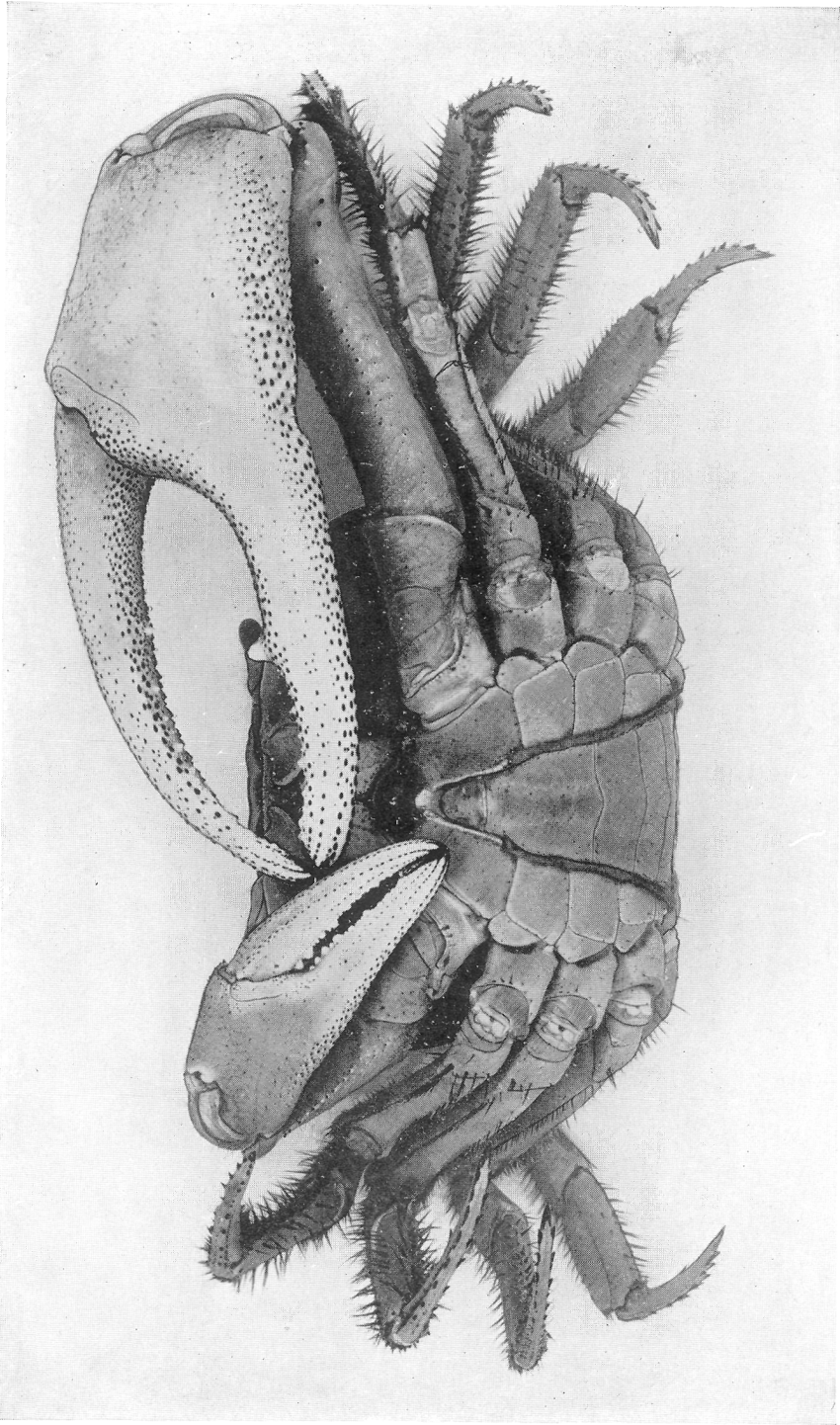


PLATE LI

*Cardisoma armatum*

- Fig. 1. Same specimen as Pl. XLIX, front view.  
Fig. 2. Male, 88 mm. wide, A. M. N. H. No. 3273, dorsal view.  
Fig. 3. Same as Fig. 2, ventral view.