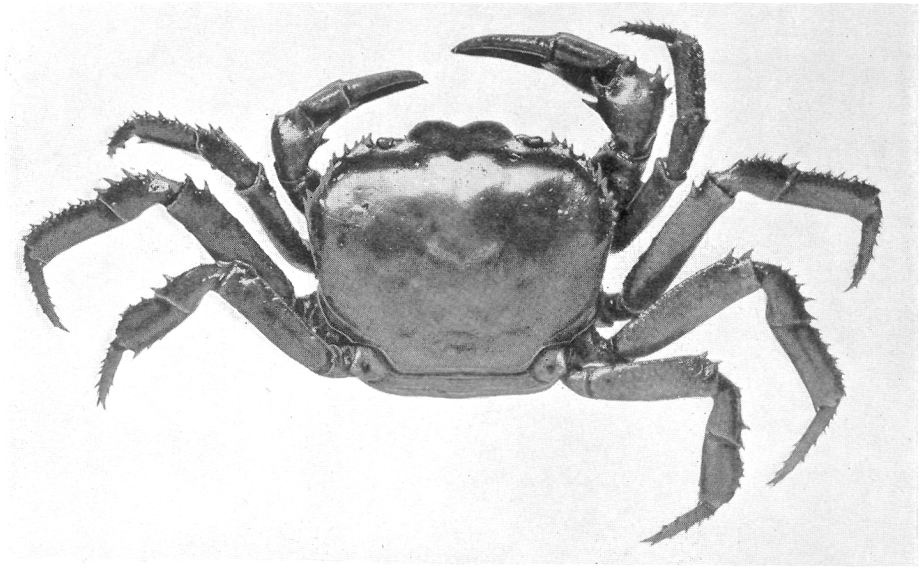
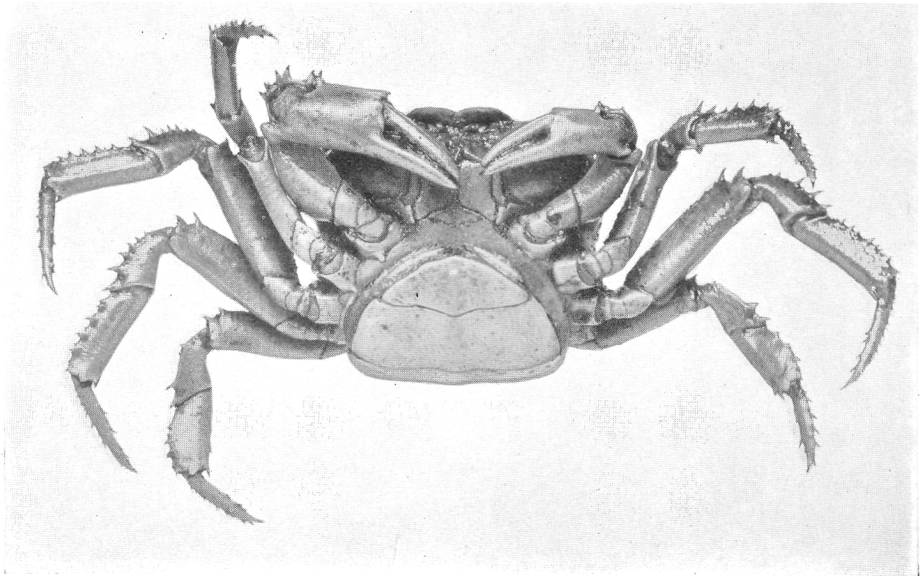


1



2



3

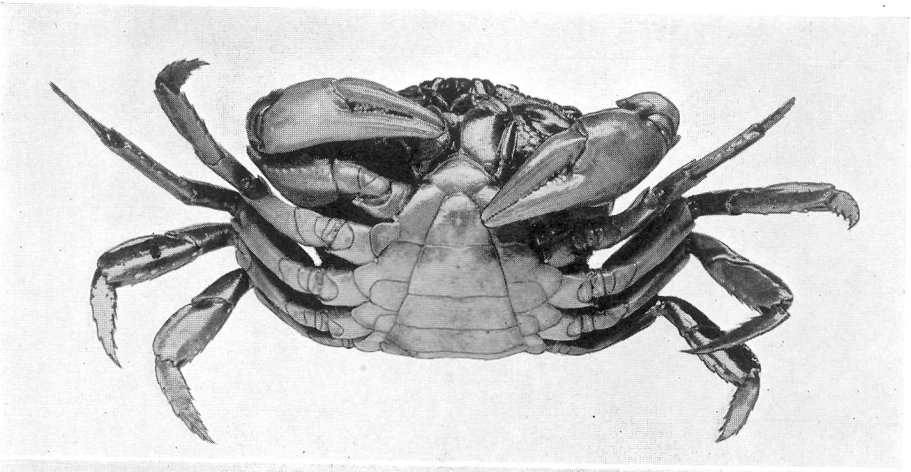
PLATE XXXIV

*Deckenia mitis*, male, 36 mm. wide, U. S. N. M. No. 32298

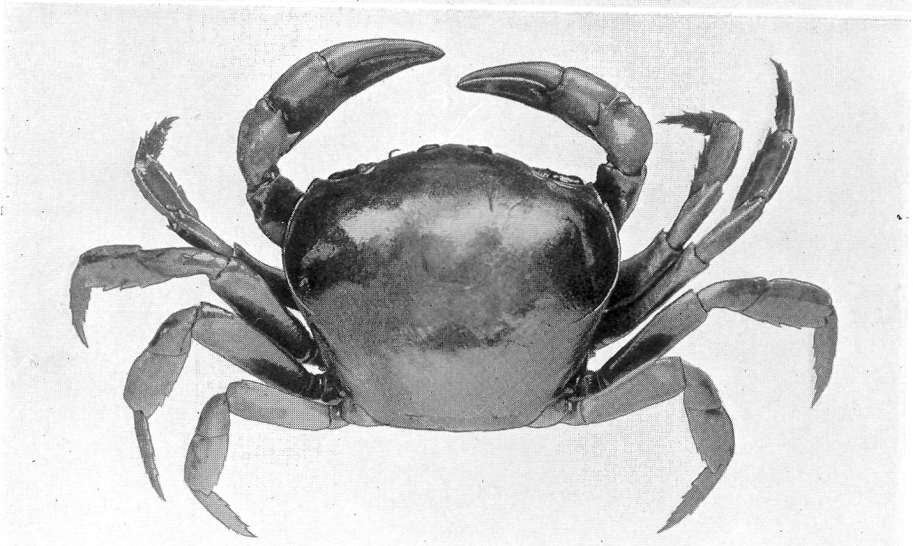
Fig. 1. Ventral view.

Fig. 2. Dorsal view.

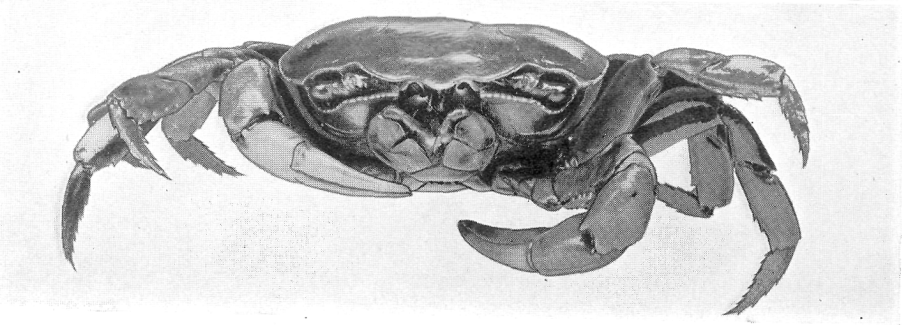
Fig. 3. Front view.



1



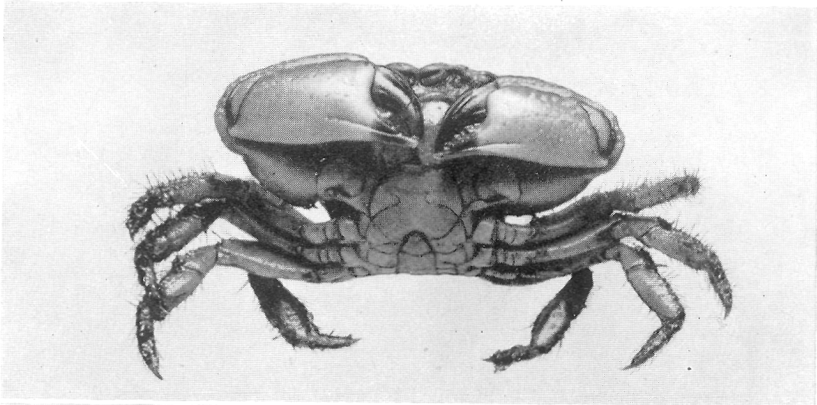
2



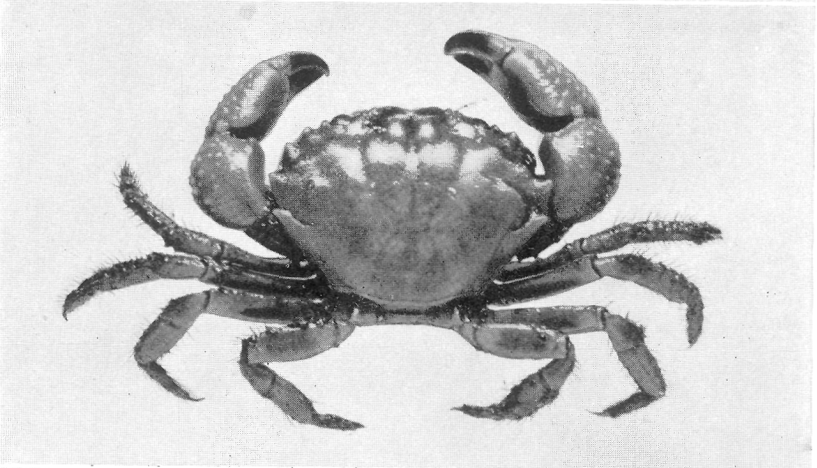
3

PLATE XXXV

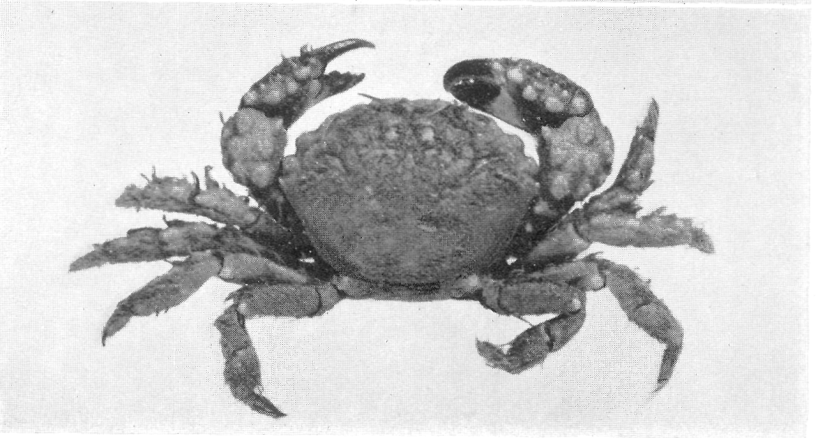
- Fig. 1. *Menippe nanus*, male, 10.7 mm. wide, Padron Point, ventral view.
- Fig. 2. Same, dorsal view.
- Fig. 3. *Pilumnus verrucosipes*, female, 9.6 mm. wide, St. Paul de Loanda, dorsal view.



1



2



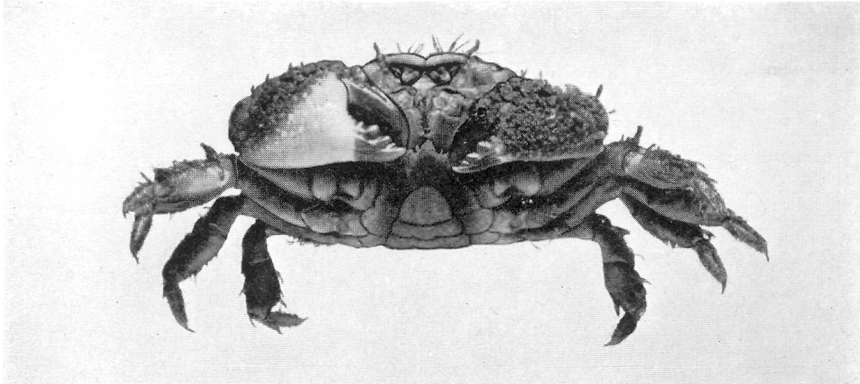
3

PLATE XXXVI

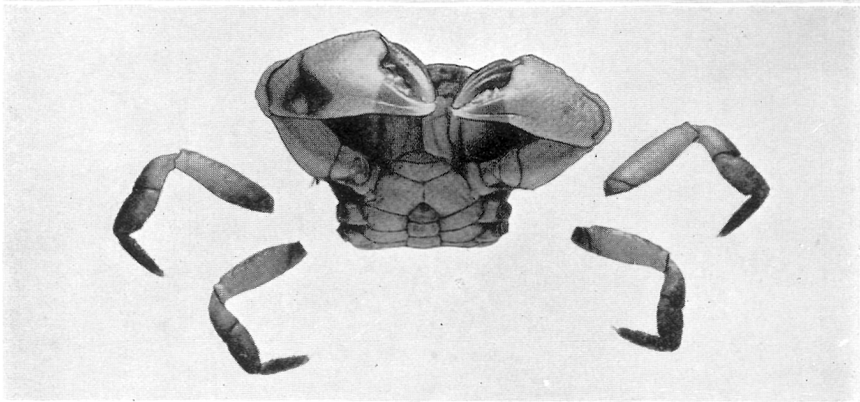
Fig. 1. *Pilumnus verrucosipes*, female, 9.6 mm. wide, St. Paul de Loanda, ventral view.

Fig. 2. *Eurypanopeus blanchardi* (?), male, 9.3 mm. wide, San Antonio, ventral view of body, chelipeds and four loose legs.

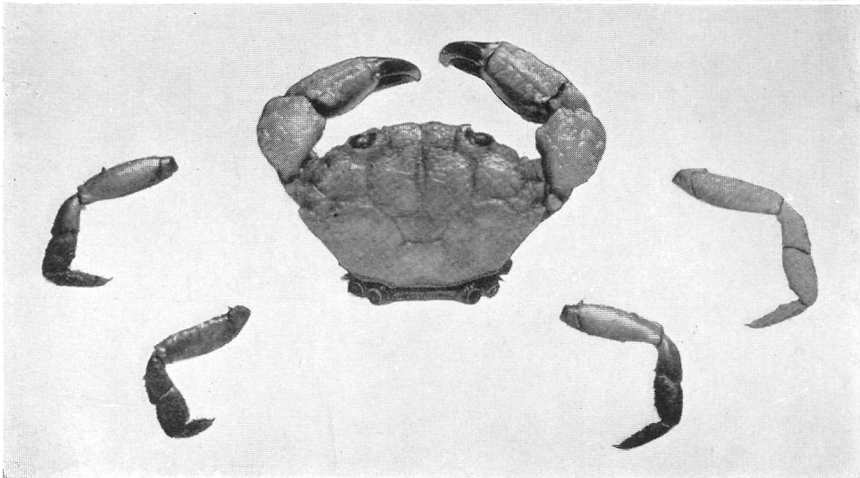
Fig. 3. Same, dorsal view.



1



2



3

PLATE XXXVII

*Panopeus africanus*, A. M. N. H. No. 3281

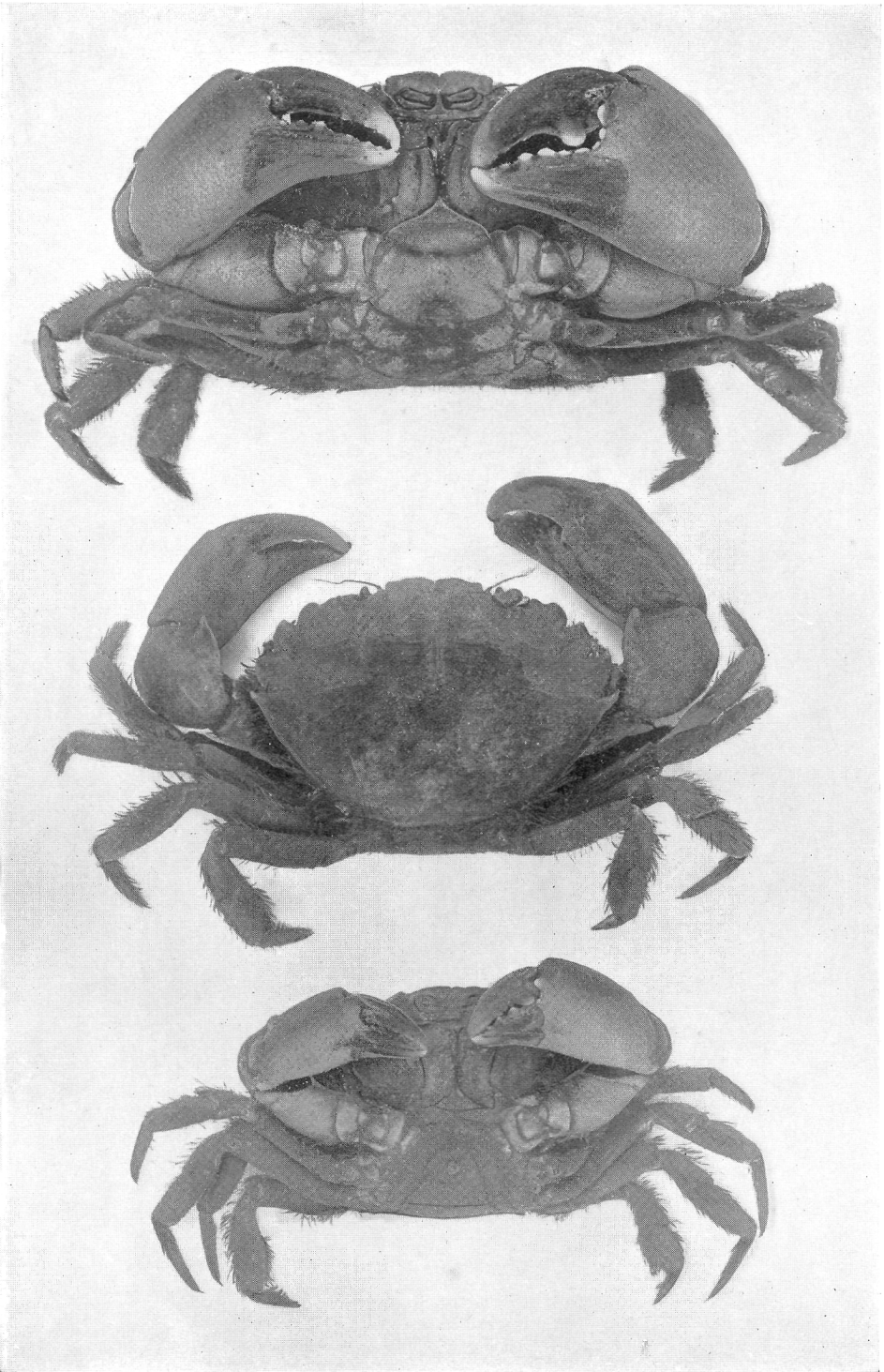
Fig. 1. Male, 38.5 mm. wide, ventral view.

Fig. 2. A smaller male, dorsal view.

Fig. 3. Female, ventral view.

All figures to same scale.





1

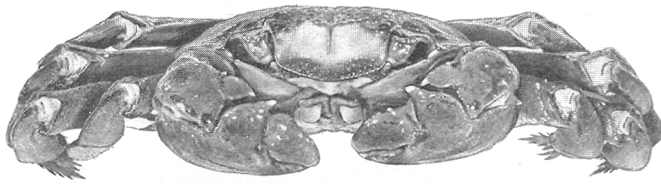
2

3

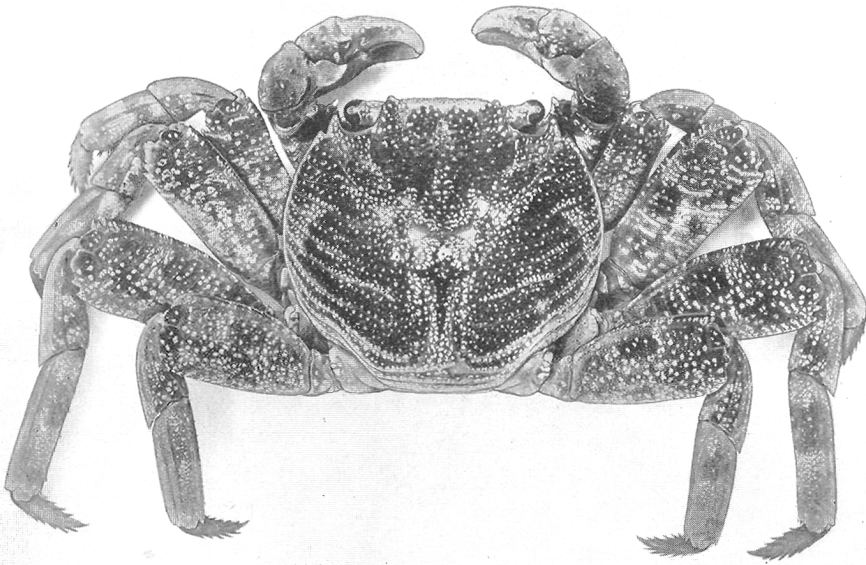
PLATE XXXVIII

*Grapsus grapsus*, A. M. N. H. No. 3070

- Fig. 1. Male, 64 mm. wide, front view.
- Fig. 2. Same specimen, dorsal view.
- Fig. 3. A smaller male, ventral view.



1



2



3

PLATE XXXIX

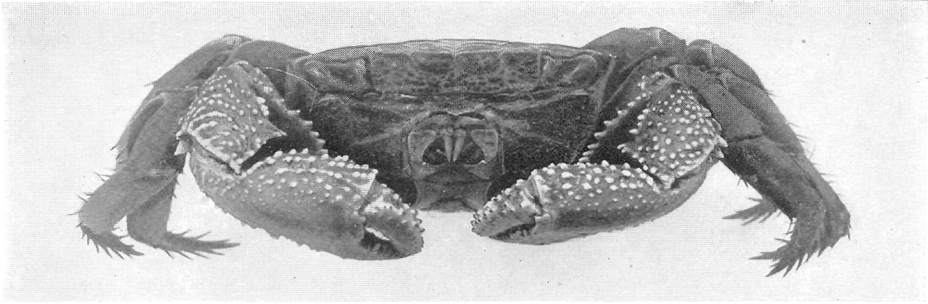
*Goniopsis cruentata*, A. M. N. H. No. 3084

Fig. 1. Male, 54 mm. wide, front view.

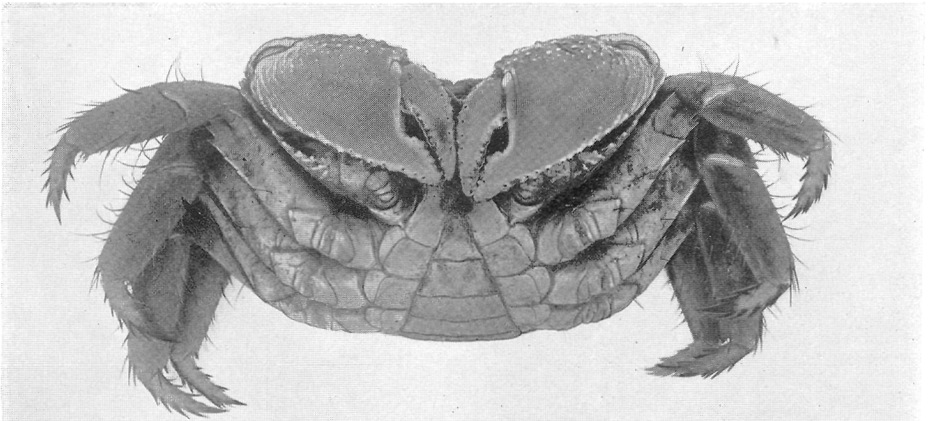
Fig. 2. Another male, ventral view.

Fig. 3. Same specimen as Fig. 1, dorsal view.

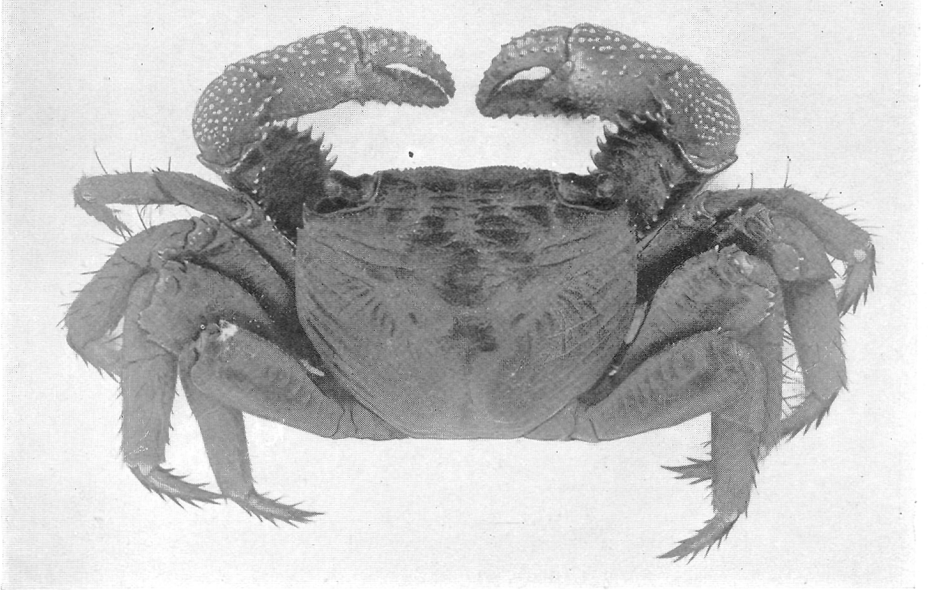
All figures to same scale.



1



2



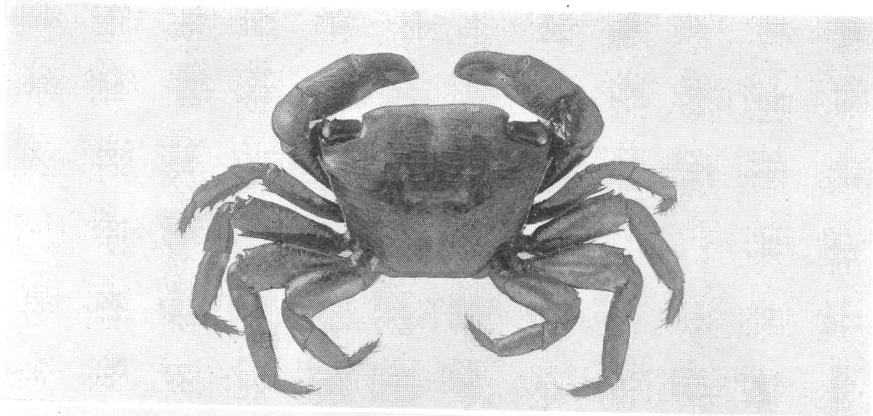
3

PLATE XL

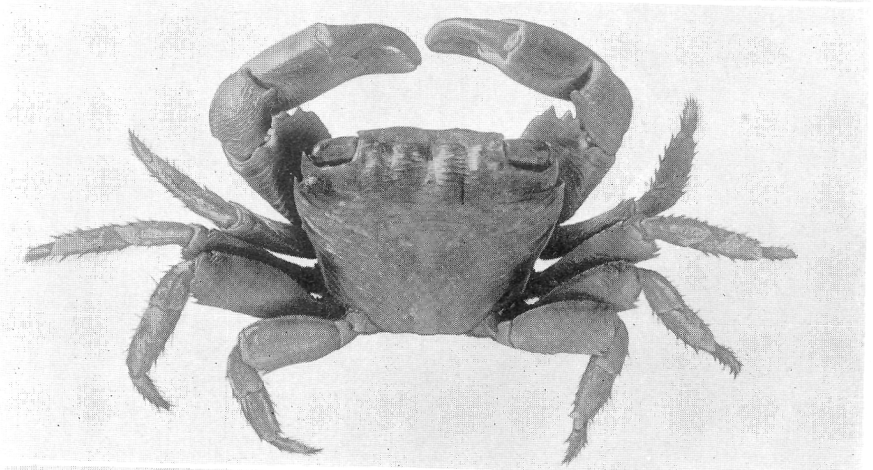
Fig. 1. *Pachygrapsus gracilis*, male, 16.6 mm. wide, U. S. N. M. No. 49254, dorsal view.

Fig. 2. *Pachygrapsus transversus*, male, 19.7 mm. wide, U. S. N. M. No. 40825, dorsal view.

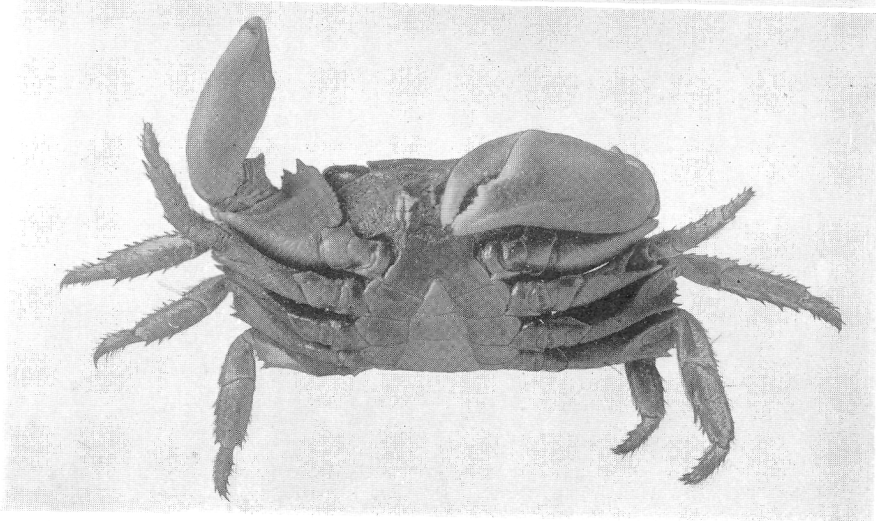
Fig. 3. Same specimen, ventral view.



1



2



3

PLATE XLI

*Sesarma (Chiromantes) africanum*, A. M. N. H. No. 3279

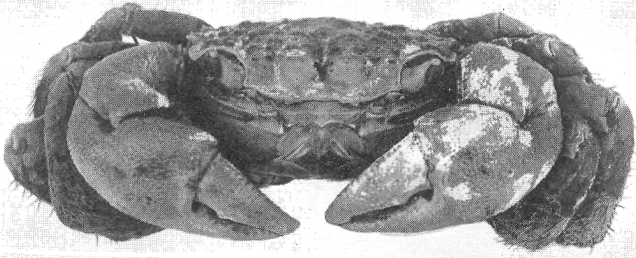
Fig. 1. Male, 43 mm. wide, front view.

Fig. 2. Female, ventral view.

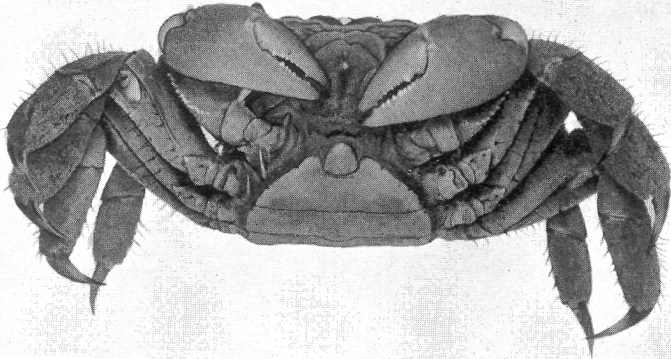
Fig. 3. Male, 41 mm. wide, dorsal view.

Fig. 4. Another male, ventral view.

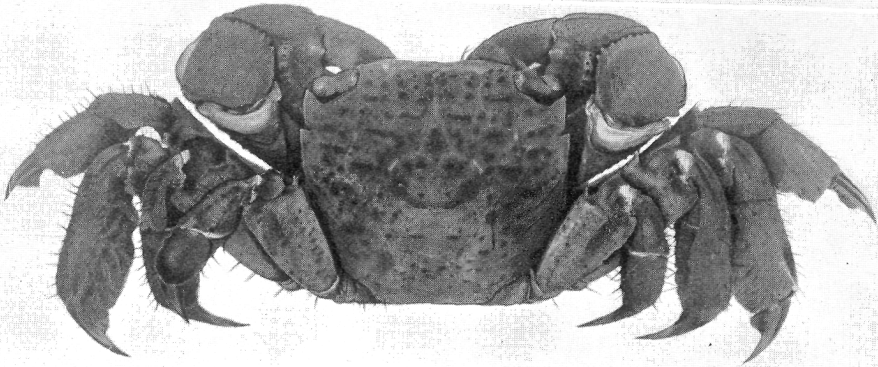




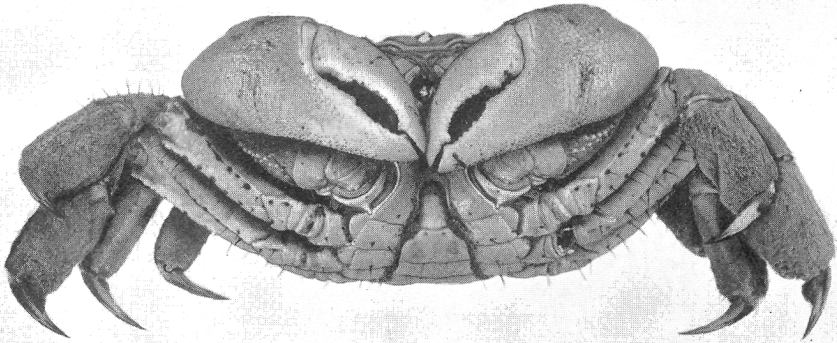
1



2



3



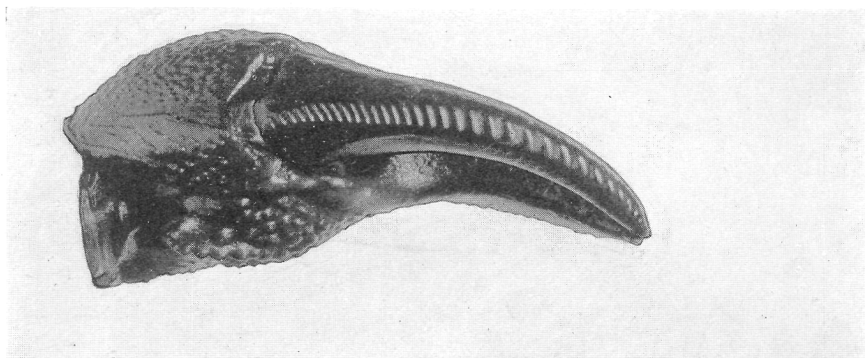
4

PLATE XLII

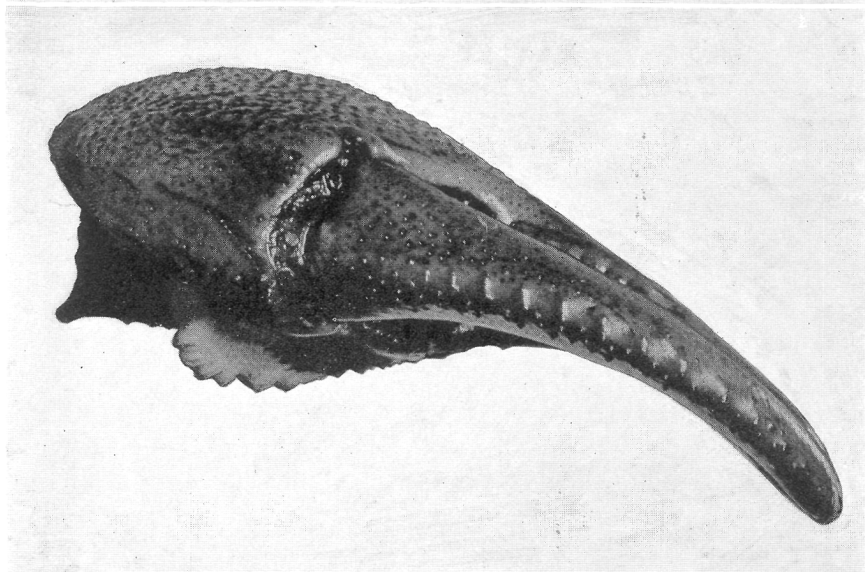
Fig. 1. *Sesarma (Chiromantes) alberti*, male holotype, dorsal view of left chela, finger 19.7 mm. long.

Fig. 2. *Sesarma (Chiromantes) africanum*, male, Banana, dorsal view of left chela, finger 28.3 mm. long.

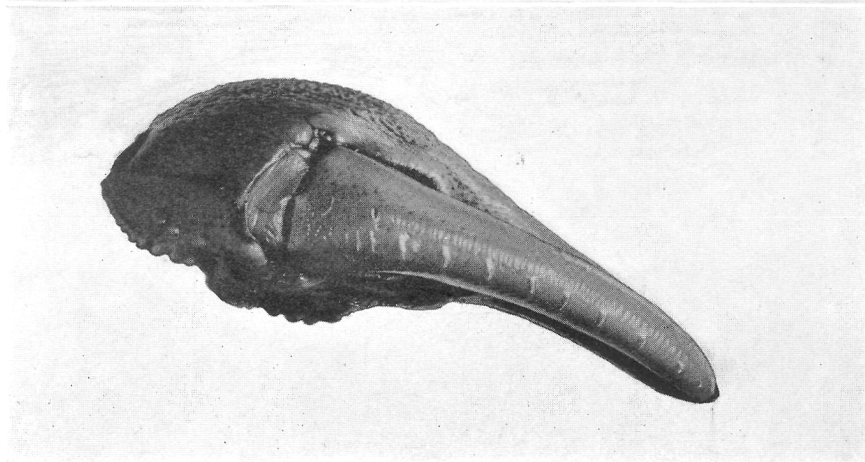
Fig. 3. *Sarmatium curvatum*, male, San Antonio, dorsal view of left chela, finger 22.1 mm. long.



1



2



3

PLATE XLIII

*Sesarma (Holometopus) angolense*, A. M. N. H. No. 3278

Fig. 1. Male, 46 mm. wide, dorsal view.

Fig. 2. A smaller male, ventral view.

Fig. 3. Female, ventral view.

All figures to same scale.