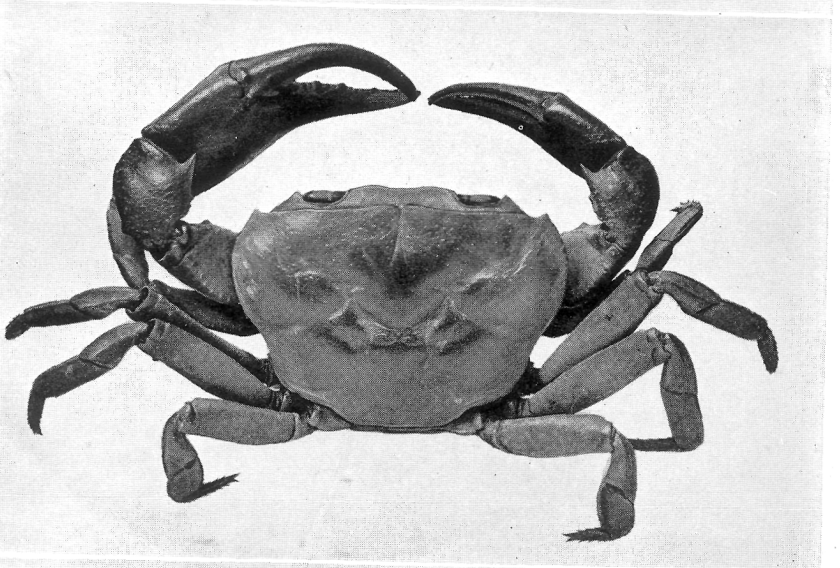
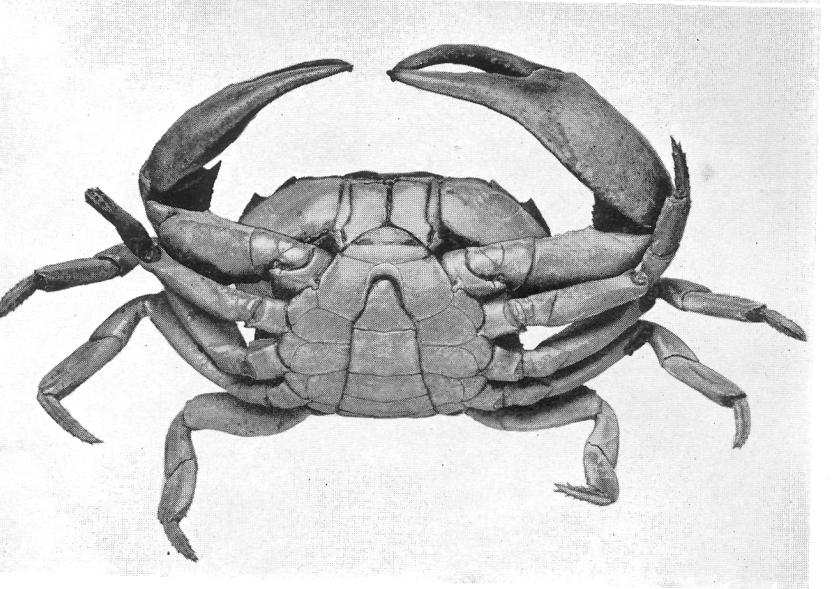


1



2



3

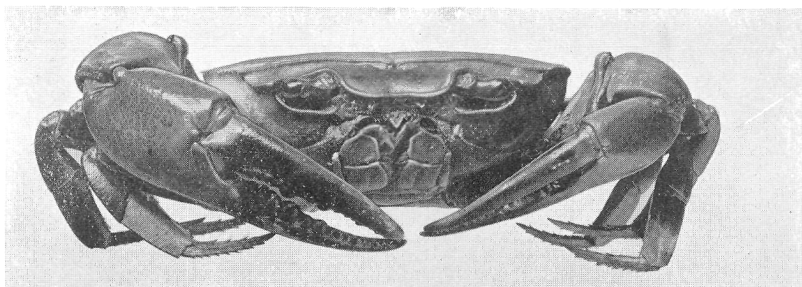
PLATE XXV

Potamon (Potamonautes) lirrangensis, male, 62 mm. wide, Stanleyville

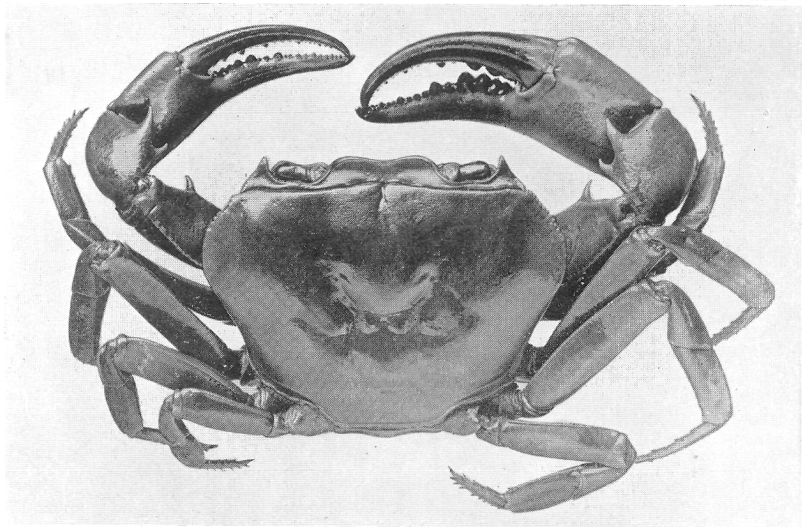
Fig. 1. Front view.

Fig. 2. Dorsal view.

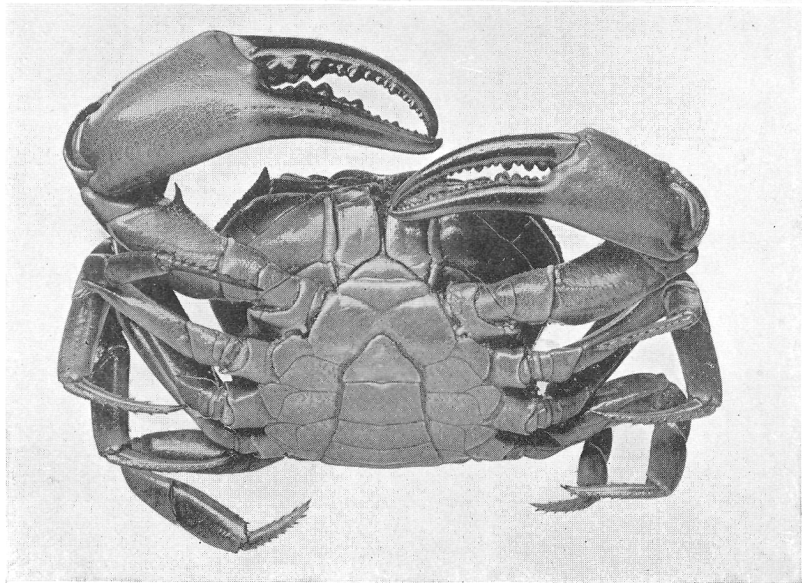
Fig. 3. Ventral view.



1



2



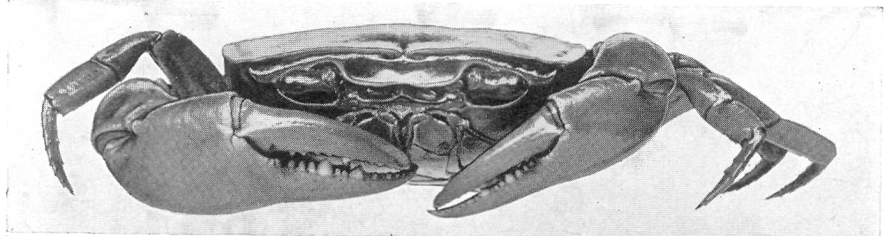
3

PLATE XXVI

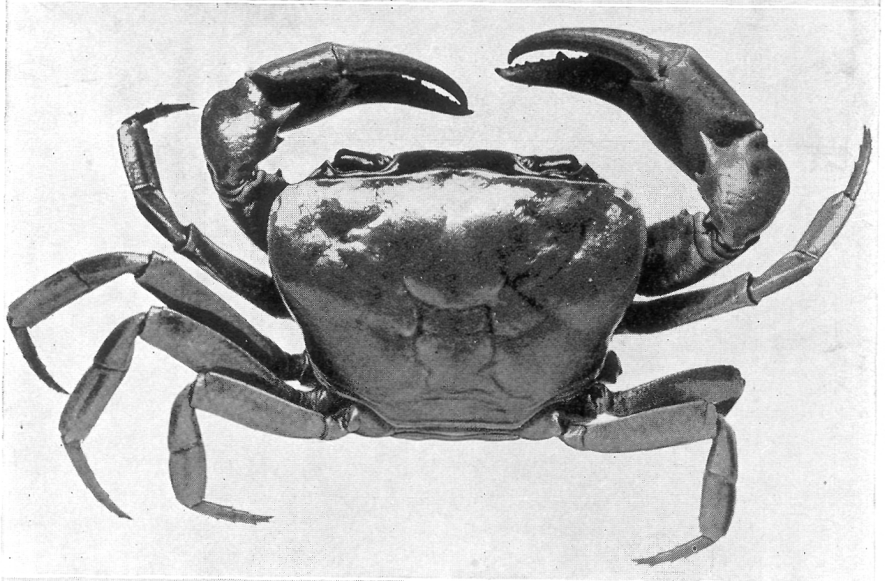
Fig. 1. *Potamon (Potamonautes) stanleyensis*, male holotype, 34.7 mm. wide, front view.

Fig. 2. Same, dorsal view.

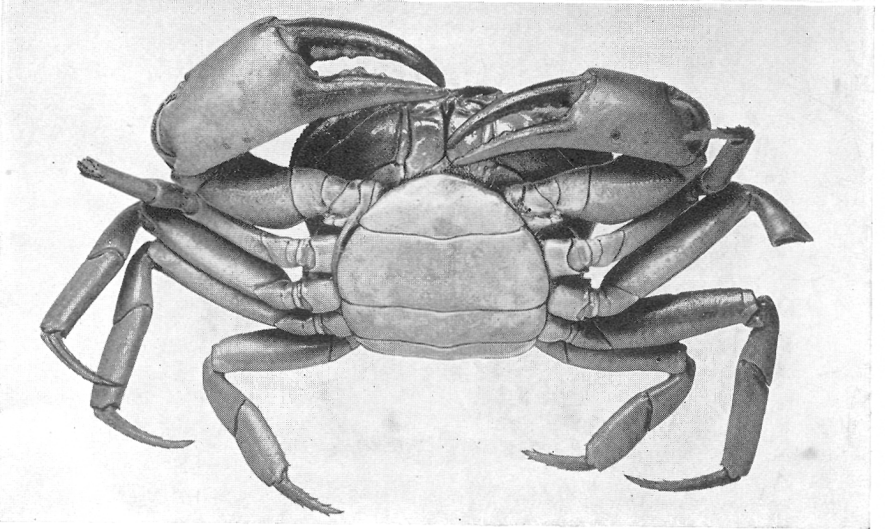
Fig. 3. *Potamon (Potamonautes) lirrangensis*, female, 61 mm. wide, Stanleyville, ventral view.



1



2

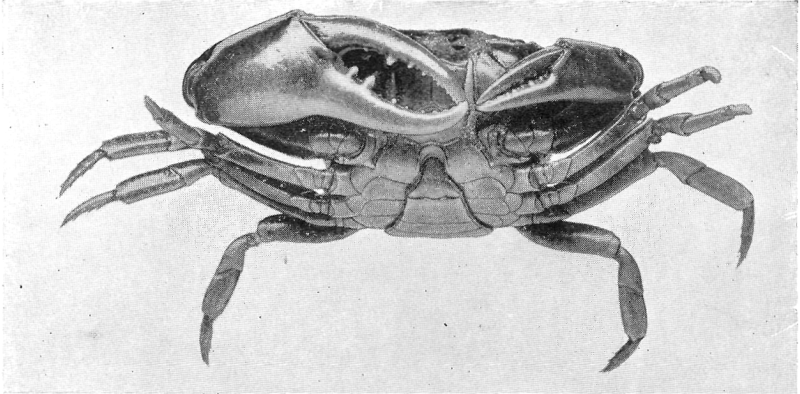


3

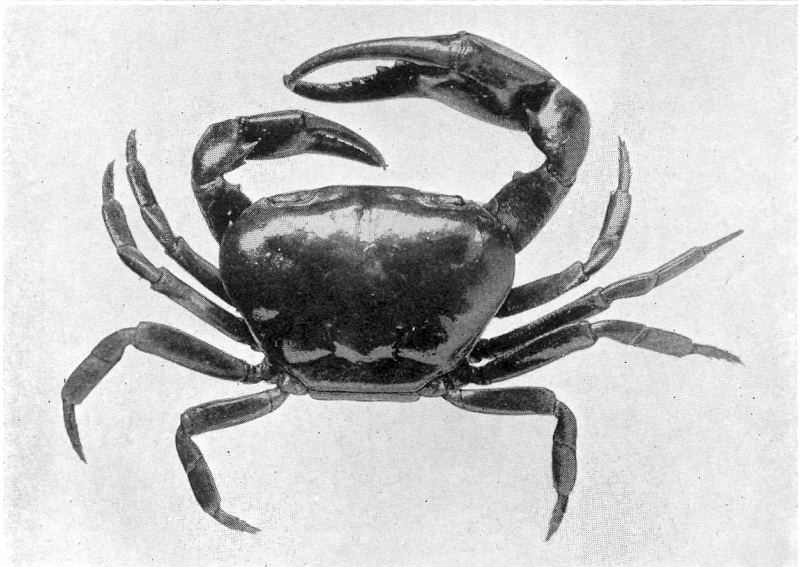
PLATE XXVII

Potamon (Potamon) ballayi, Stanleyville

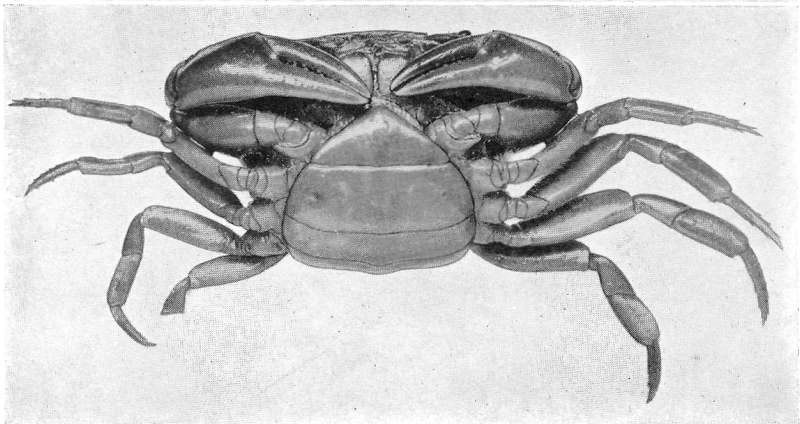
- Fig. 1. Male, 27.4 mm. wide, ventral view.
Fig. 2. Same, dorsal view.
Fig. 3. Female, 29.8 mm. wide, ventral view.



1



2



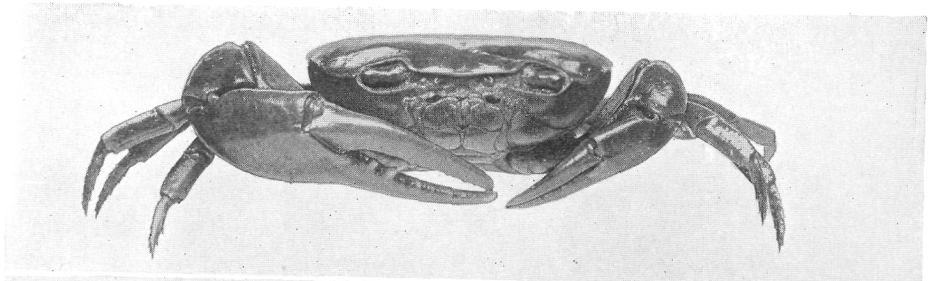
3

PLATE XXVIII

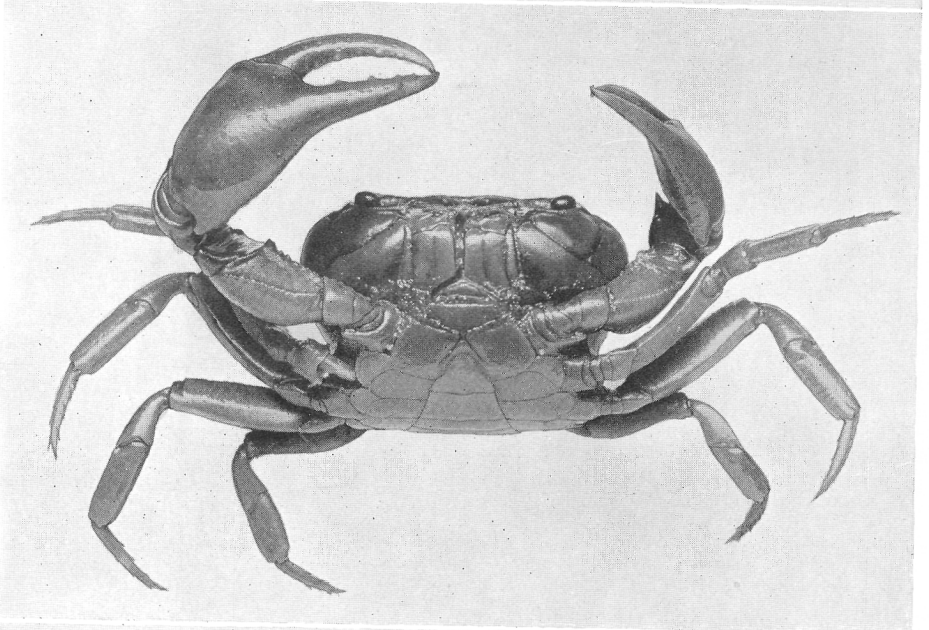
Fig. 1. *Potamon (Potamon) ballayi*, male, 27.4 mm. wide, Stanleyville, front view.

Fig. 2. *Potamon (Geothelphusa) perparvus*, male holotype, 19.6 mm. wide, ventral view.

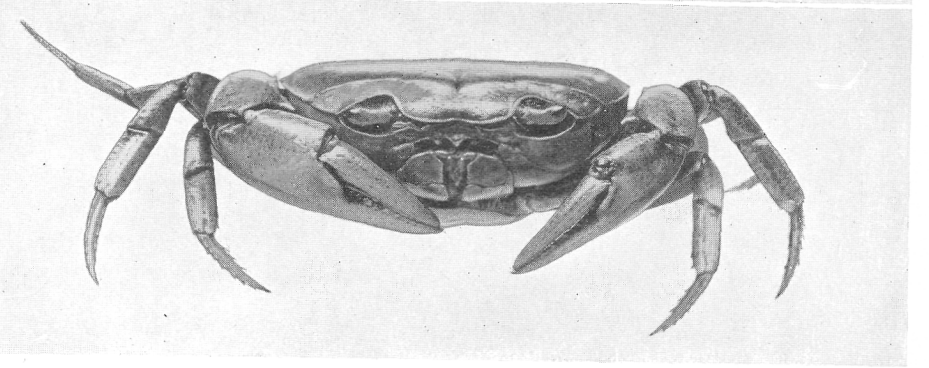
Fig. 3. *Potamon (Geothelphusa) congoënsis*, female, 31.7 mm. wide, Poko, front view.



1



2

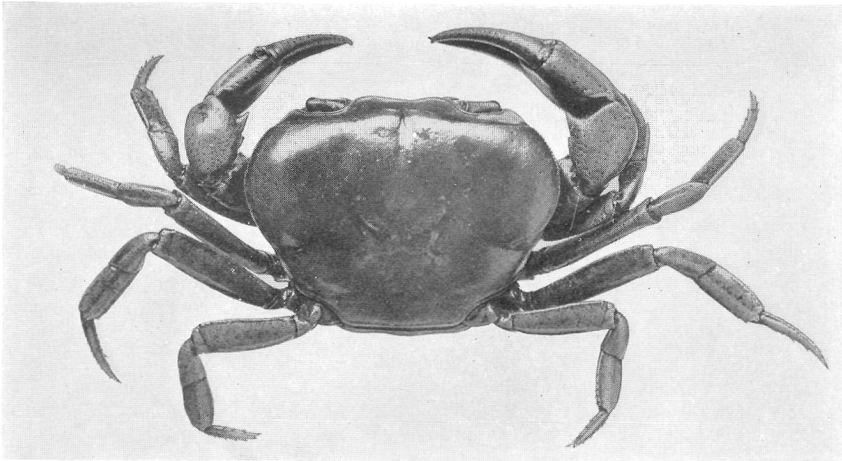


3

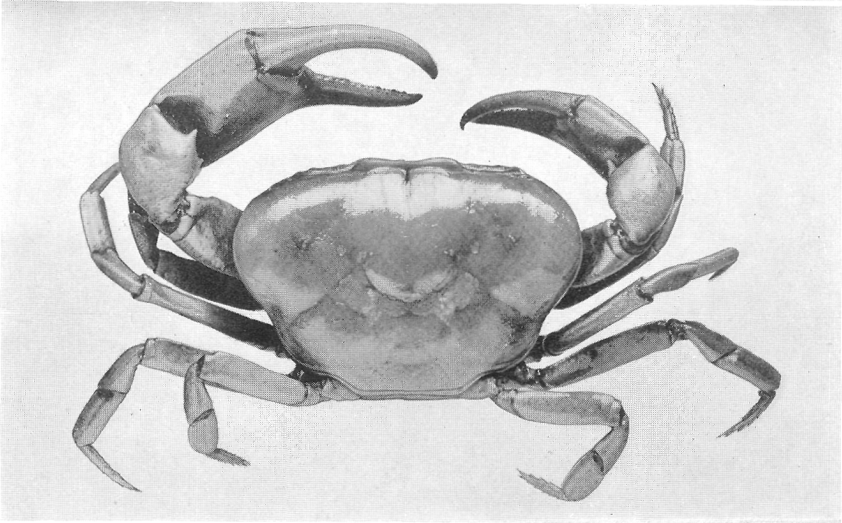
PLATE XXIX

Potamon (Geothelphusa) congoënsis

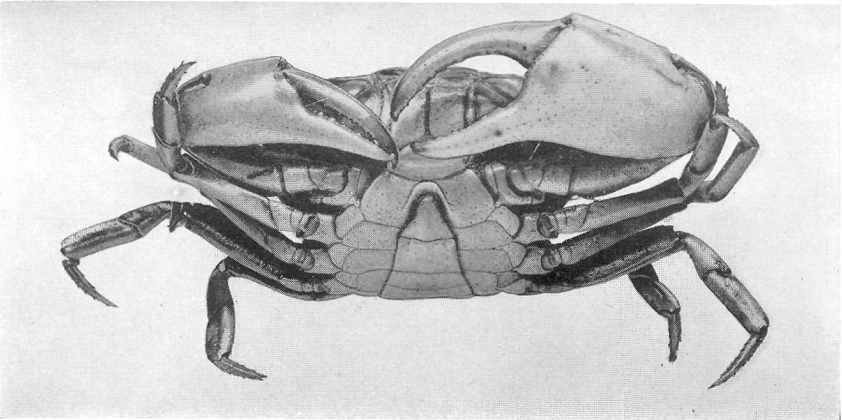
- Fig. 1. Female, 31.7 mm. wide, Poko, dorsal view.
Fig. 2. Male holotype, 44 mm. wide, dorsal view.
Fig. 3. Same, ventral view.



1



2

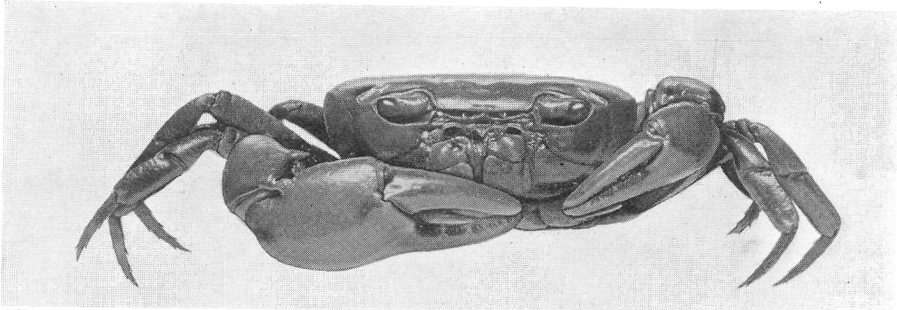


3

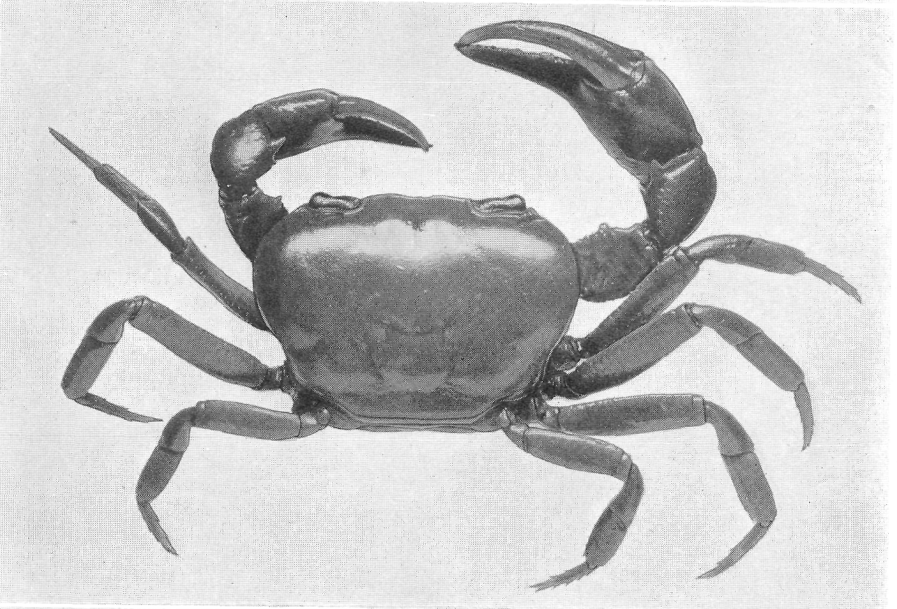
PLATE XXX

Potamon (Geothelphusa) perparvus

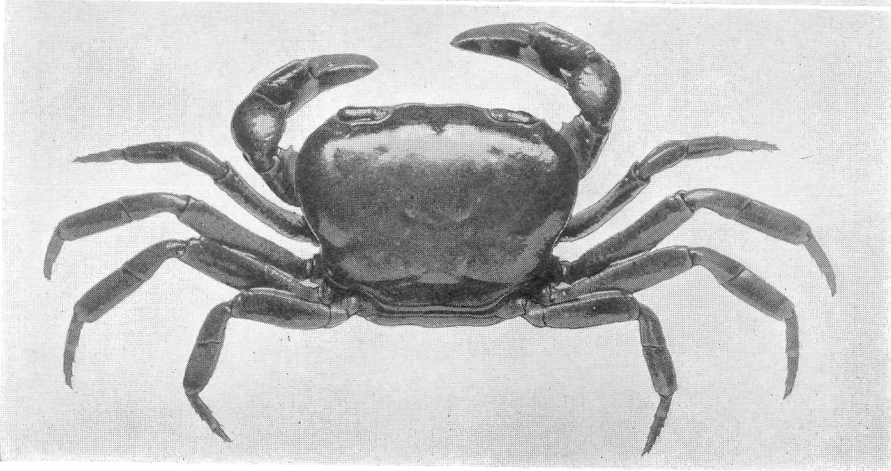
- Fig. 1. Male holotype, 19.6 mm. wide, front view.
- Fig. 2. Same, dorsal view.
- Fig. 3. Female, 17.2 mm. wide, Stanleyville, dorsal view.



1



2

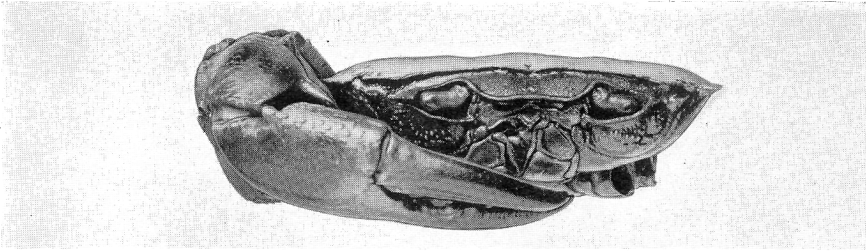


3

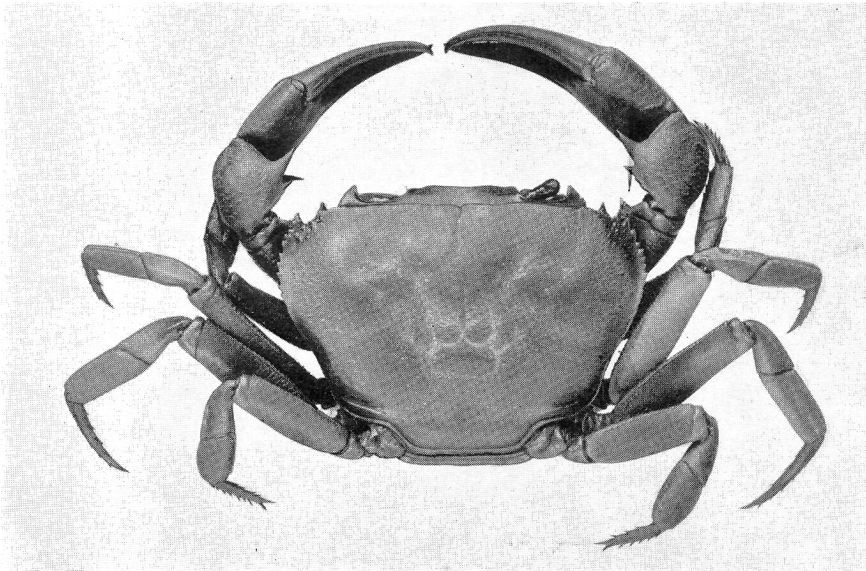
PLATE XXXI

Potamon (Acanthohelphusa) faradjensis

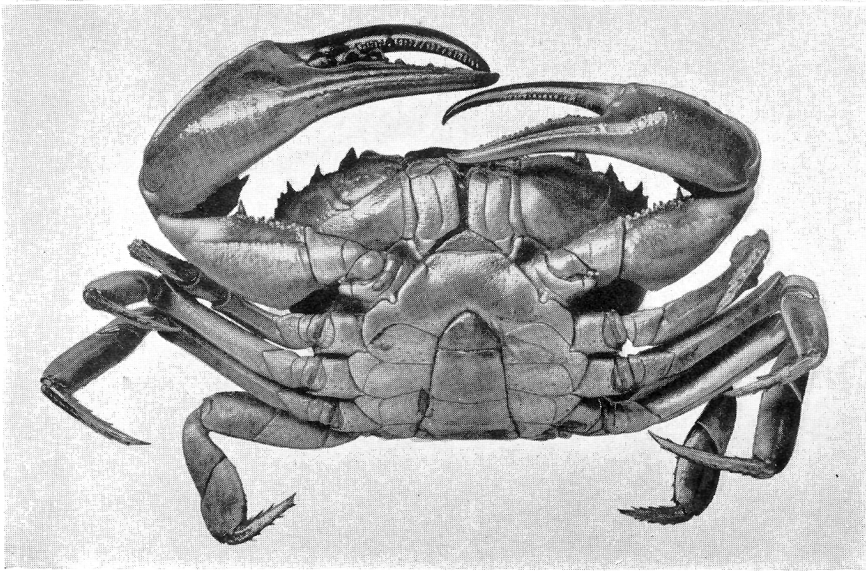
- Fig. 1. Male holotype, 74 mm. wide, front view.
- Fig. 2. Female, 68.5 mm. wide, Faradje, dorsal view.
- Fig. 3. Male holotype, ventral view.



1



2



3

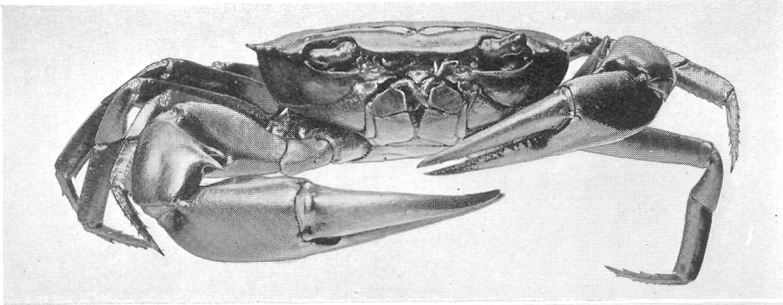
PLATE XXXII

Potamon (Acanthothelphusa) langi, male holotype, 49 mm. wide

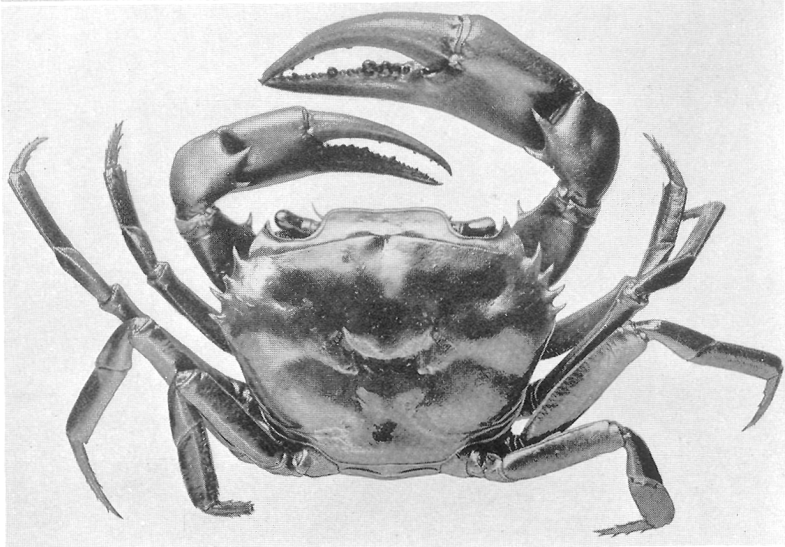
Fig. 1. Front view.

Fig. 2. Dorsal view.

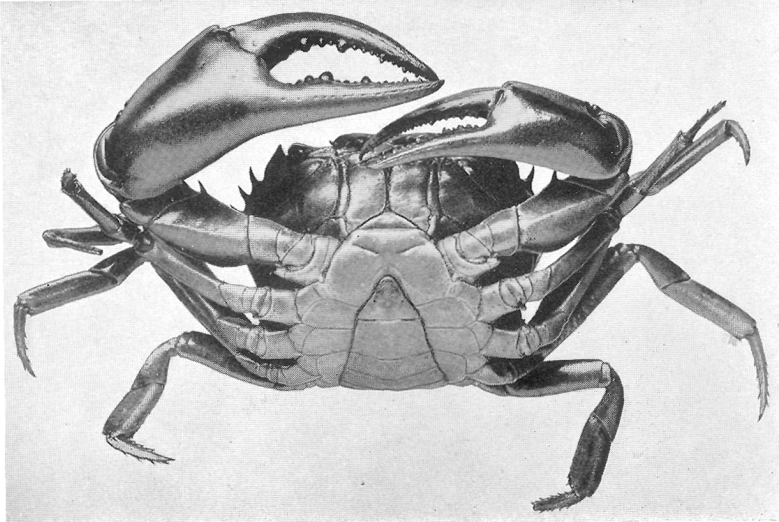
Fig. 3. Ventral view.



1



2



3

PLATE XXXIII

Erimetopus brazzae, female, 82 mm. wide, Leopoldville

Fig. 1. Front view.

Fig. 2. Dorsal view.

Fig. 3. Ventral view.