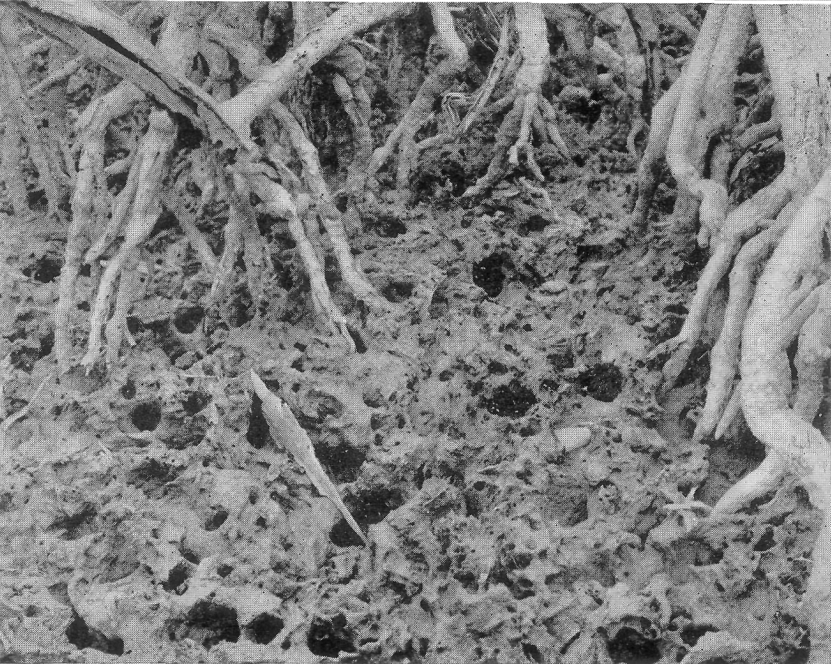


1



2

PLATE XVII

Fig. 1. View showing habitat of *Cardisoma armatum*, with crab near mouth of burrow, Banana. Much reduced.

Fig. 2. Detail of Fig. 1 on a larger scale.



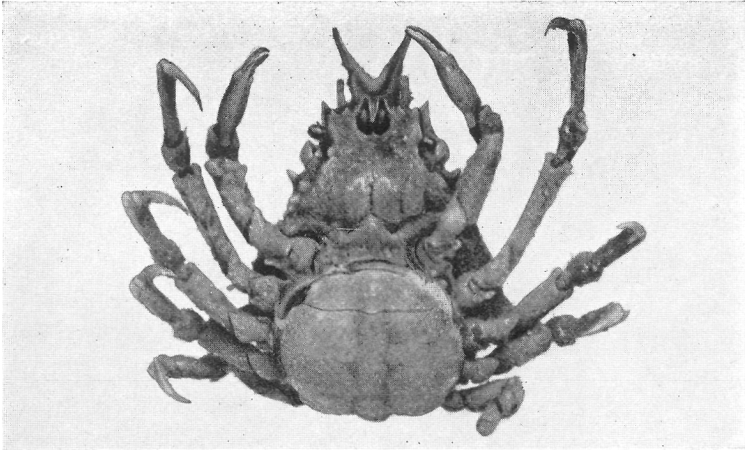
1



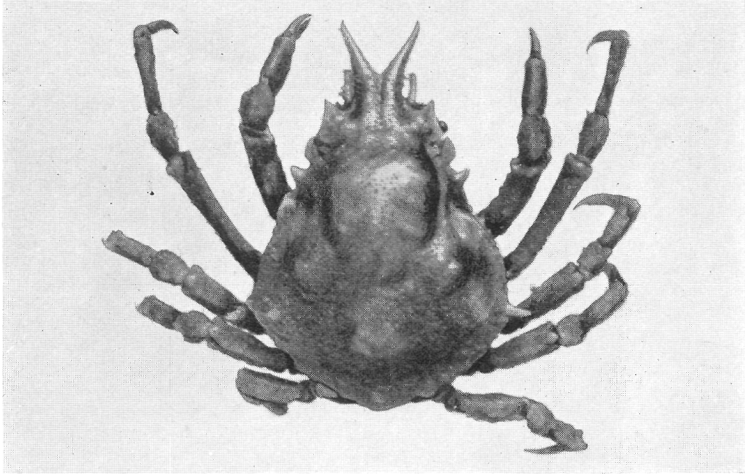
2

PLATE XVIII

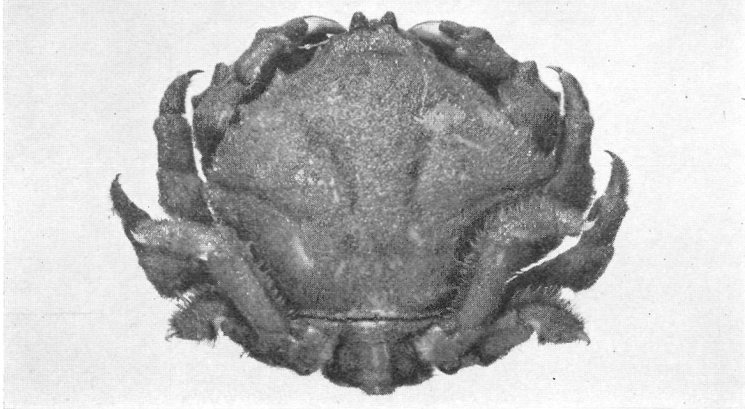
- Fig. 1. *Pisa carinimana*, female, 14.8 mm. long, St. Paul de Loanda, ventral view.  
Fig. 2. Same, dorsal view.  
Fig. 3. *Dromia atlantica*, female, 30 mm. wide, St. Paul de Loanda, dorsal view.



1



2

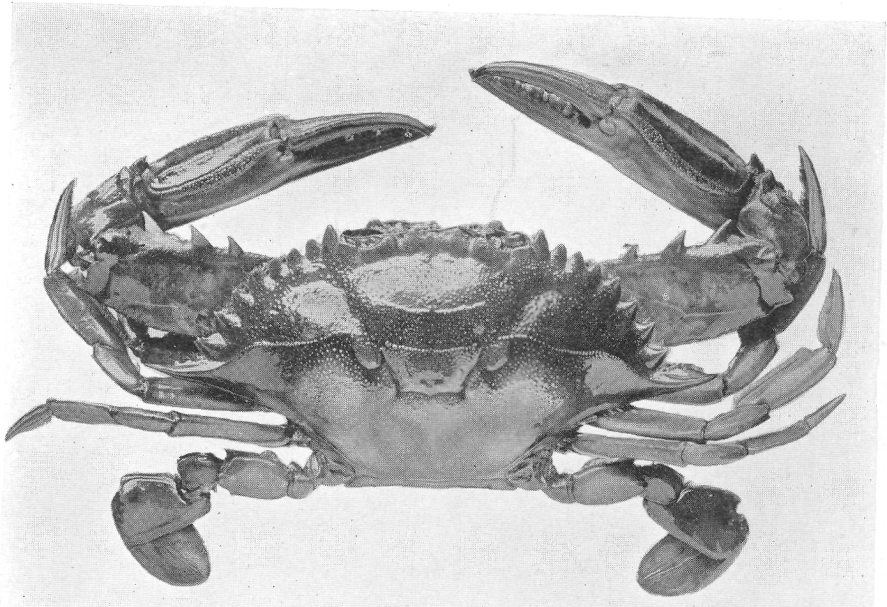


3

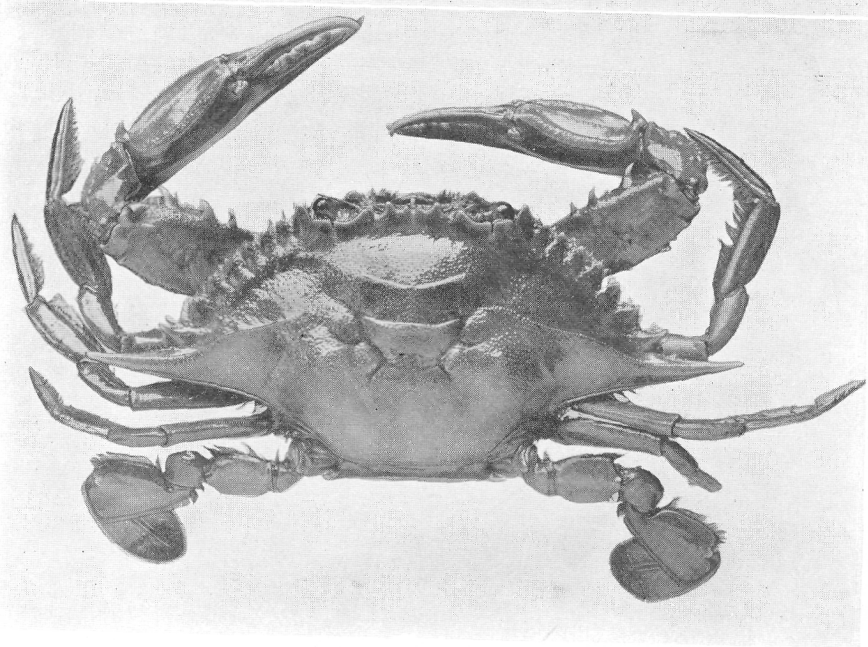
PLATE XIX

Fig. 1. *Callinectes marginatus*, male, 101 mm. wide, Banana, dorsal view.

Fig. 2. *Callinectes gladiator*, male, 78.7 mm. wide, San Antonio, dorsal view.



1



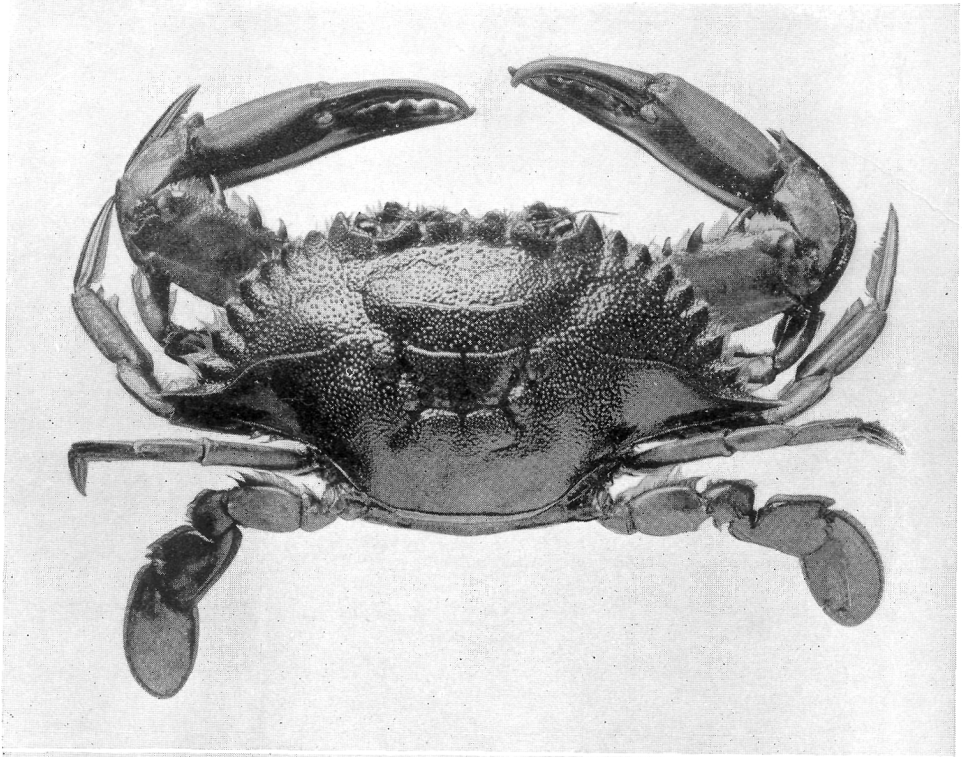
2

PLATE XX

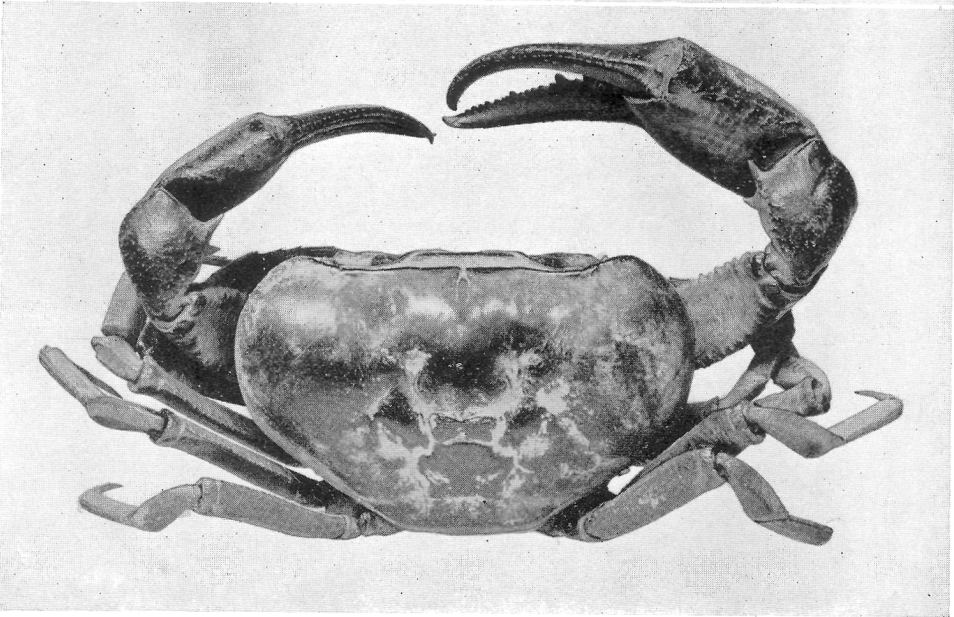
Fig. 1. *Callinectes marginatus*, female, 85 mm. wide, Banana, dorsal view.

Fig. 2. *Potamon (Potamonautes) floweri*, male, 59.8 mm. wide, Nepoko River, dorsal view.





1

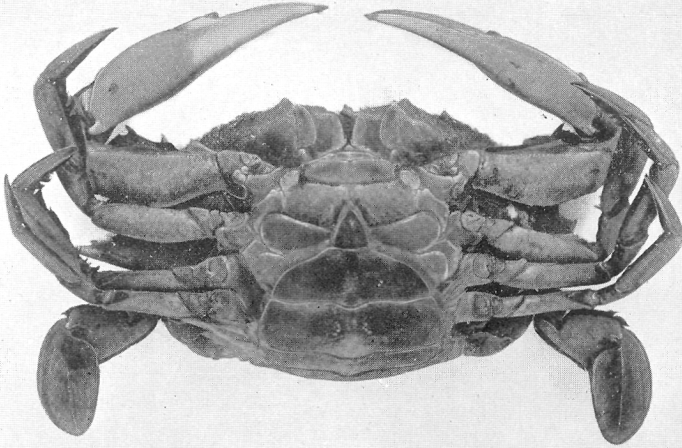


2

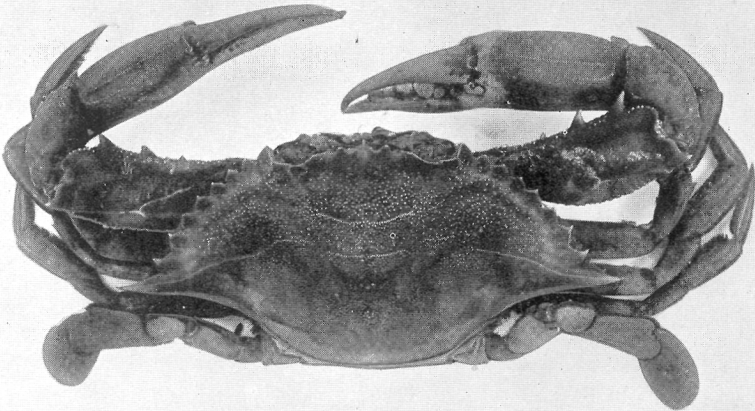
PLATE XXI

*Callinectes latimanus*

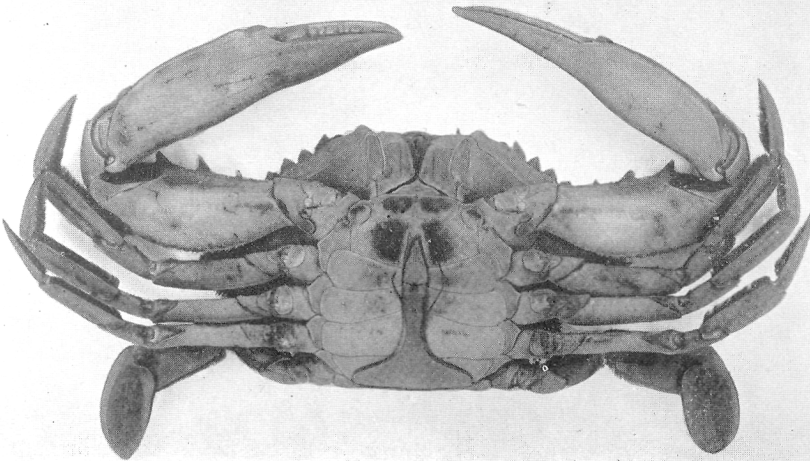
- Fig. 1. Female, 130 mm. wide, A. M. N. H. No. 3112, ventral view.
- Fig. 2. Male, 142 mm. wide, A. M. N. H. No. 3272, dorsal view, carapace fore-shortened.
- Fig. 3. Same specimen, ventral view.



1



2



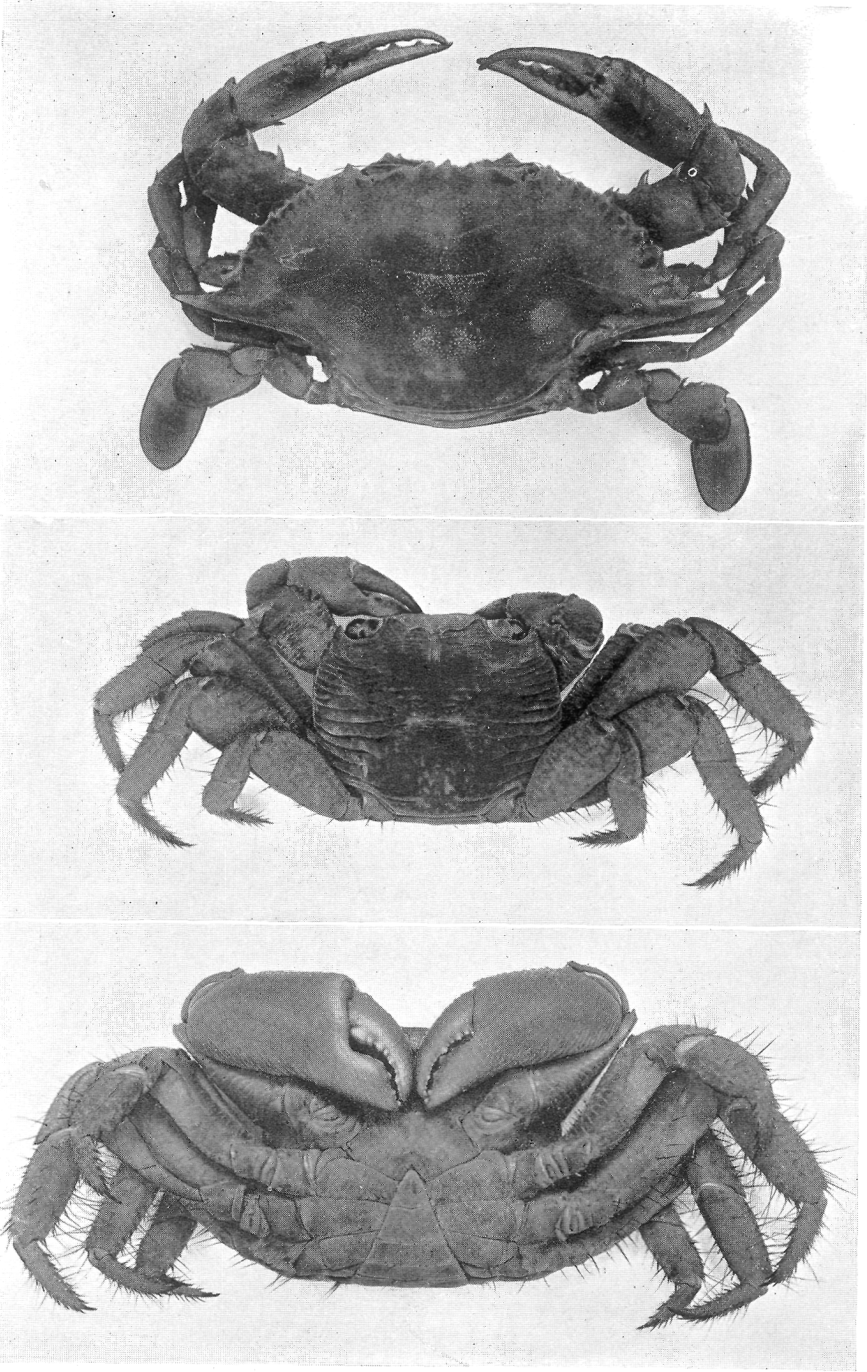
3

PLATE XXII

Fig. 1. *Callinectes latimanus*, female, 130 mm. wide, A. M. N. H. No. 3112, dorsal view.

Fig. 2. *Geograpsus lividus*, male, 35 mm. wide, A. M. N. H. No. 3069, dorsal view.

Fig. 3. Same species, very large male, A. M. N. H. No. 3069, ventral view.



1

2

3

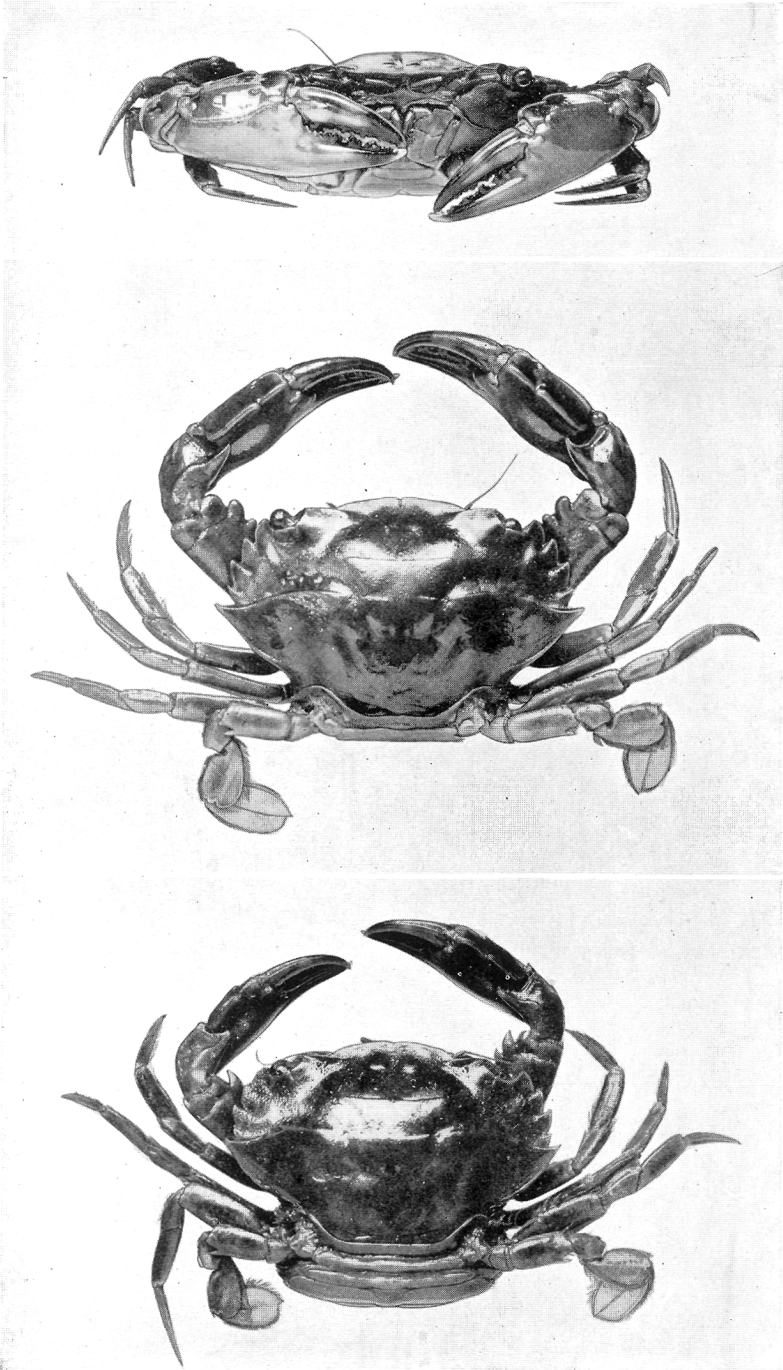
PLATE XXIII

*Thalamita africana*, St. Paul de Loanda

Fig. 1. Male, 41 mm. wide, front view.

Fig. 2. Same, dorsal view.

Fig. 3. Female, 29.4 mm. wide, dorsal view.



1

2

3

PLATE XXIV

*Potamon (Potamonautes) dybowskii*, male, 58.6 mm. wide, Nepoko River

Fig. 1. Front view.

Fig. 2. Dorsal view.

Fig. 3. Ventral view.