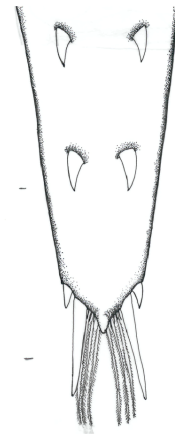


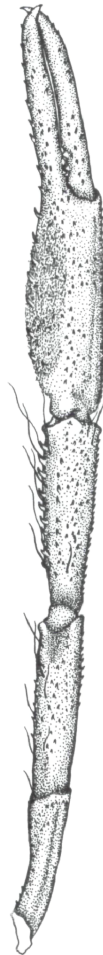
59



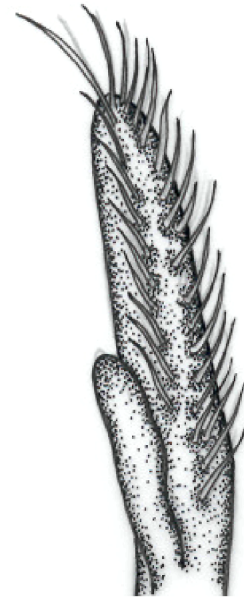
60



61

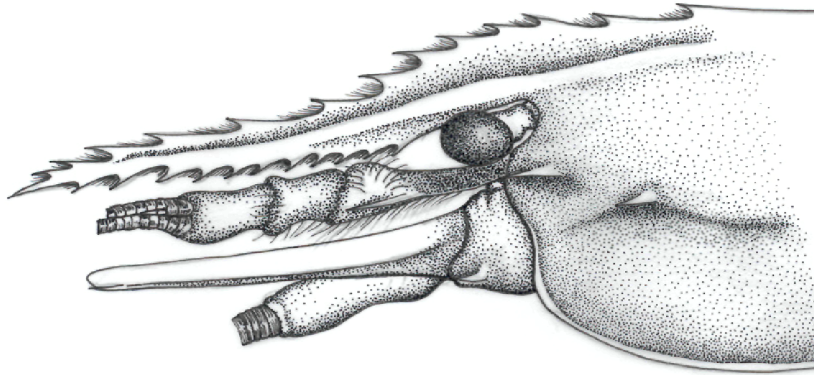


62



63

Figs 59-63. *Macrobrachium olfersii*: 59, Região anterior do cefalotórax, v.l., (INPA 1073); 60, telso, v.d., (INPA 1073); 61, segundo par de pereiópodos ♂, v.v., (INPA 1073); 62, segundo par de pereiópodos ♀, v.v., (INPA 1103); 63, apêndice masculino (INPA 1078).



64

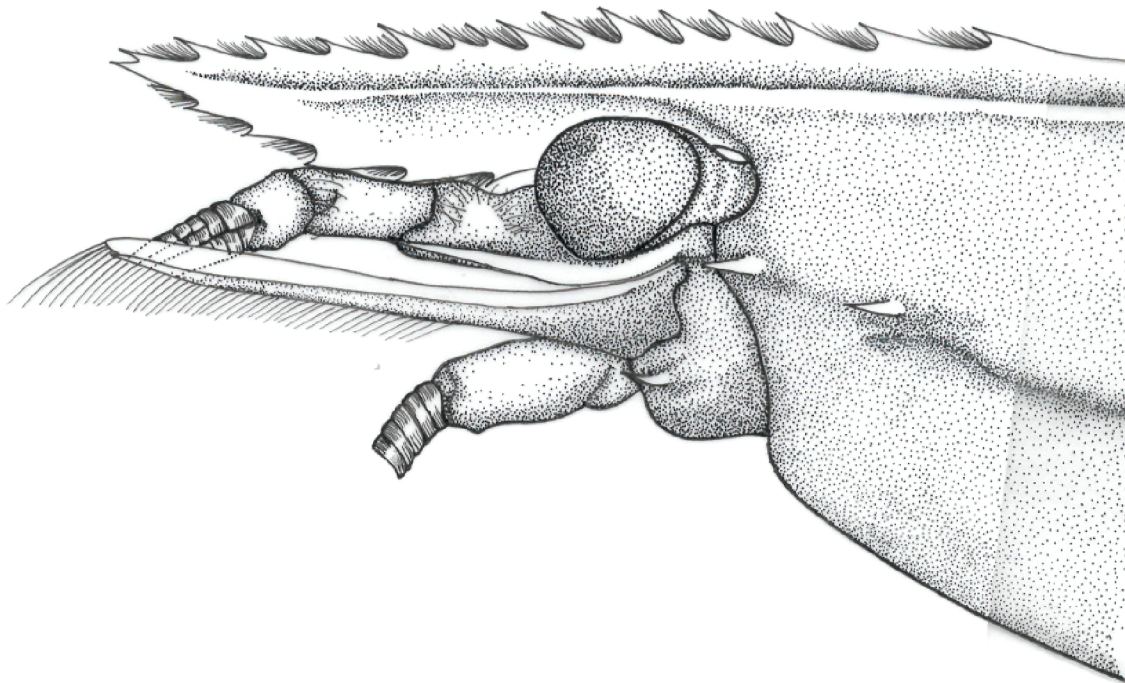


65



66

Figs 64-66. *Macrobrachium rosenbergii*: 64, Região anterior do cefalotórax, v.l., (MPEG 244); 65, própodo e dáctilo do segundo par de pereiópodos ♂, v.v., (MPEG 244); 66, apêndice masculino (MPEG 244).



67

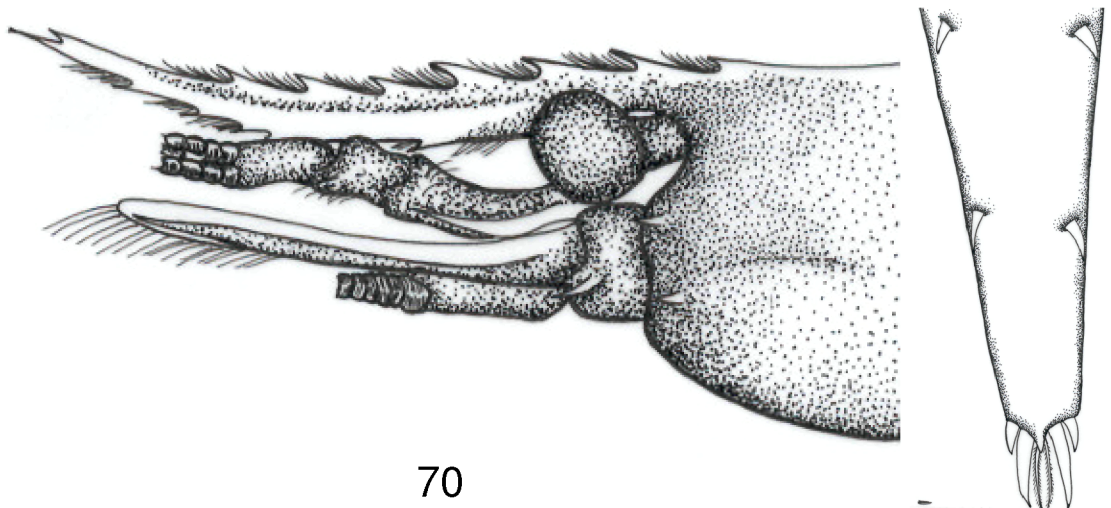


68



69

Figs 67-69 *Macrobrachium surinamicum*: 67, Região anterior do cefalotórax, v.l., (MPEG 520); 68, telso, v.d., (MPEG 520); 69, apêndice masculino (INPA 183).



70

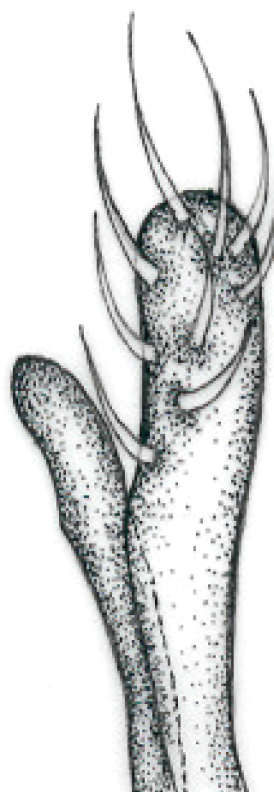
71



72

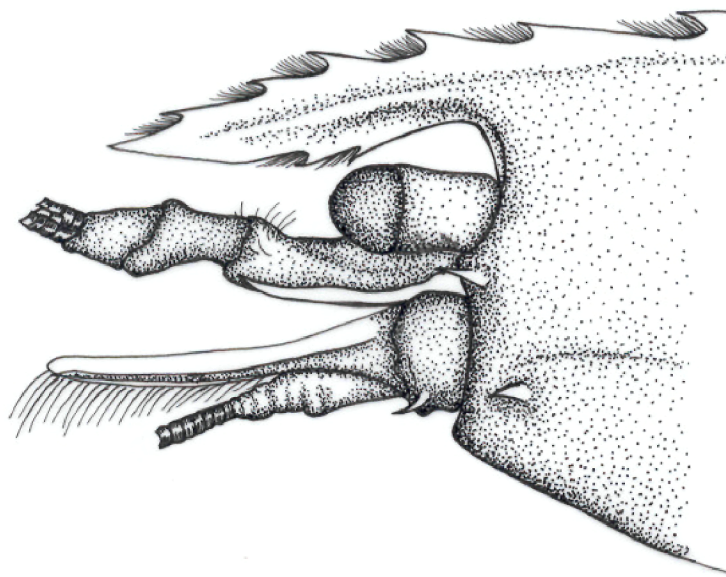


73



74

Figs 70-74. *Palaemonetes carteri*: 70, Região anterior do cefalotórax, v.l., (MPEG 604); 71, telso, v.d., (MPEG 604); 72, segundo par de pereiópodos ♂, v.v., (INPA 1126); 73, segundo par de pereiópodos ♀, v.v., (INPA 1113); 74, apêndice masculino (INPA 1126).



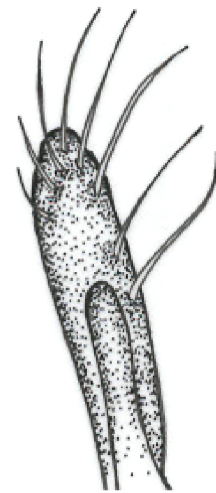
75



76

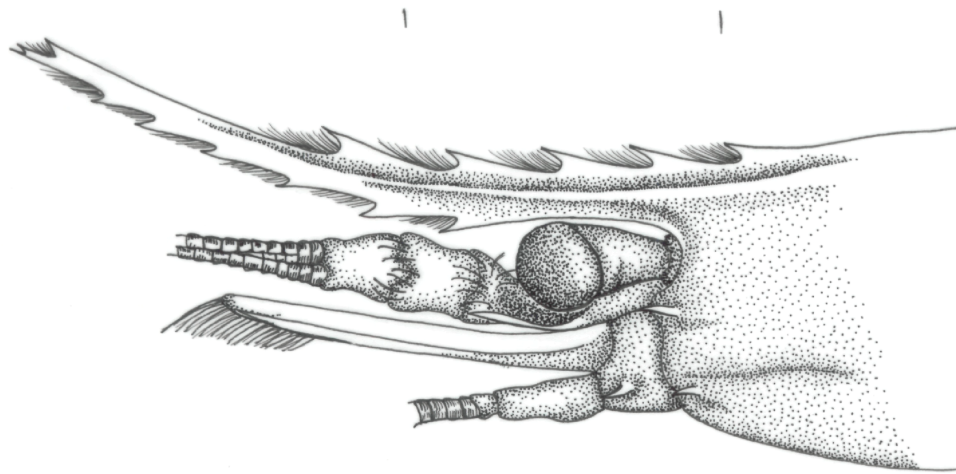


77



78

Figs 75-78. *Palaemonetes mercedae*: 75, Região anterior do cefalotórax, v.l., (INPA 1119); 76, telso, v.d., (INPA 1119); 77, segundo par de pereiópodos, ♂, v.v., (INPA 1119); 78, apêndice masculino (INPA 1119).



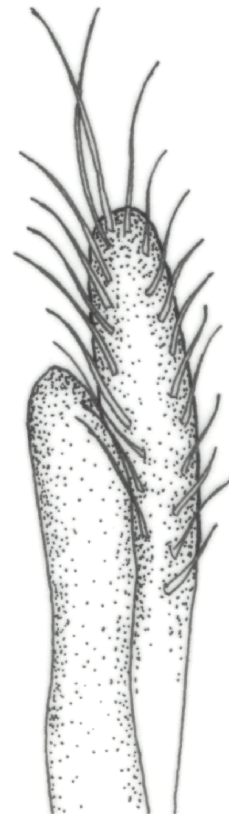
79



80

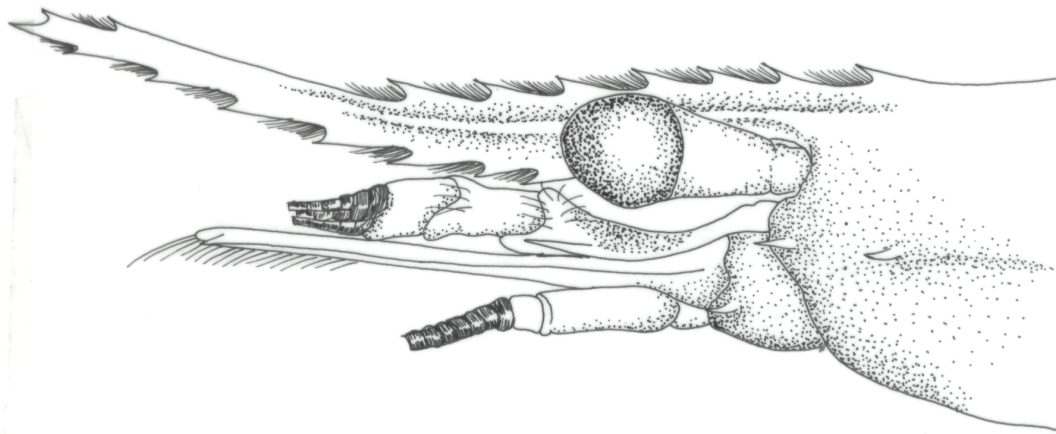


81

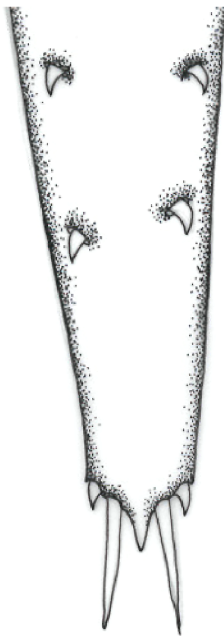


82

Figs 79-82. *Palaemon pandaliformis*: 79, Região anterior do cefalotórax, v.l., (MPEG 282); 80, segundo par de pereiópodos ♂, v.v., (MPEG 282); 81, segundo par de pereiópodos ♀, v.v., (MPEG 282); 82, apêndice masculino (MPEG 282).



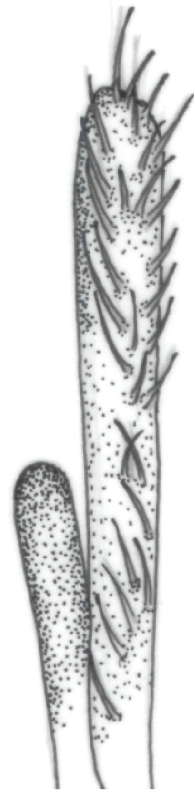
83



84

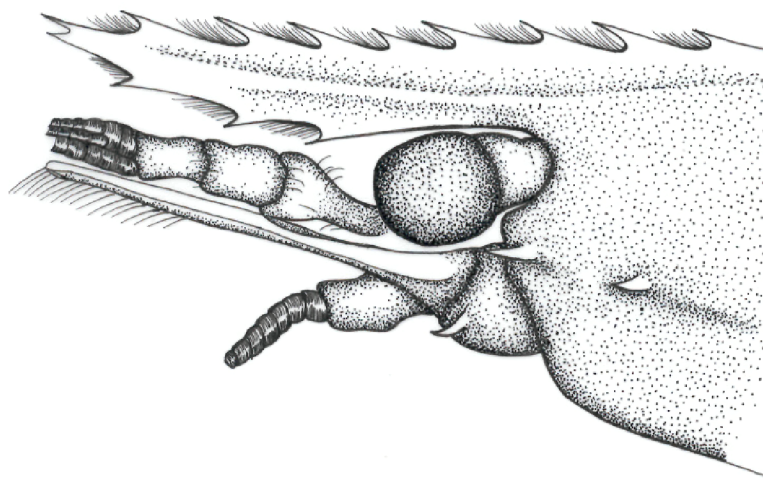


85



86

Figs 83-86. *Pseudopalaemon amazonensis*: 83, Região anterior do cefalotórax, v.l., (MPEG 451); 84, telso, v.d., (MPEG 451); 85, segundo par de pereiópodos ♂, v.v., (MPEG 451); 86, apêndice masculino (MPEG 451).



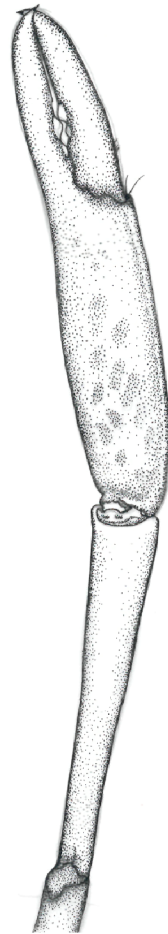
87



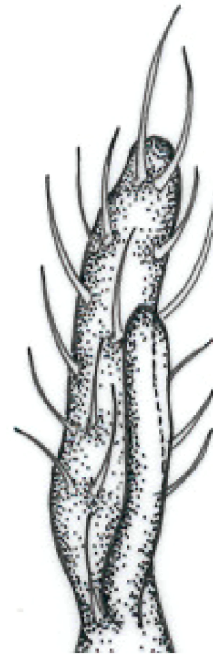
88



89



90



91

Figs 87-91. *Pseudopalaemon chryseus*: 87, Região anterior do cefalotórax, v.l., (MPEG 749); 88, telso, v.d., (MPEG 749); 89, segundo par de pereiópodos ♂, v.v., (INPA 1106); 90, segundo par de pereiópodos ♀, v.v., (INPA 1129); 91, apêndice masculino (INPA 1106).



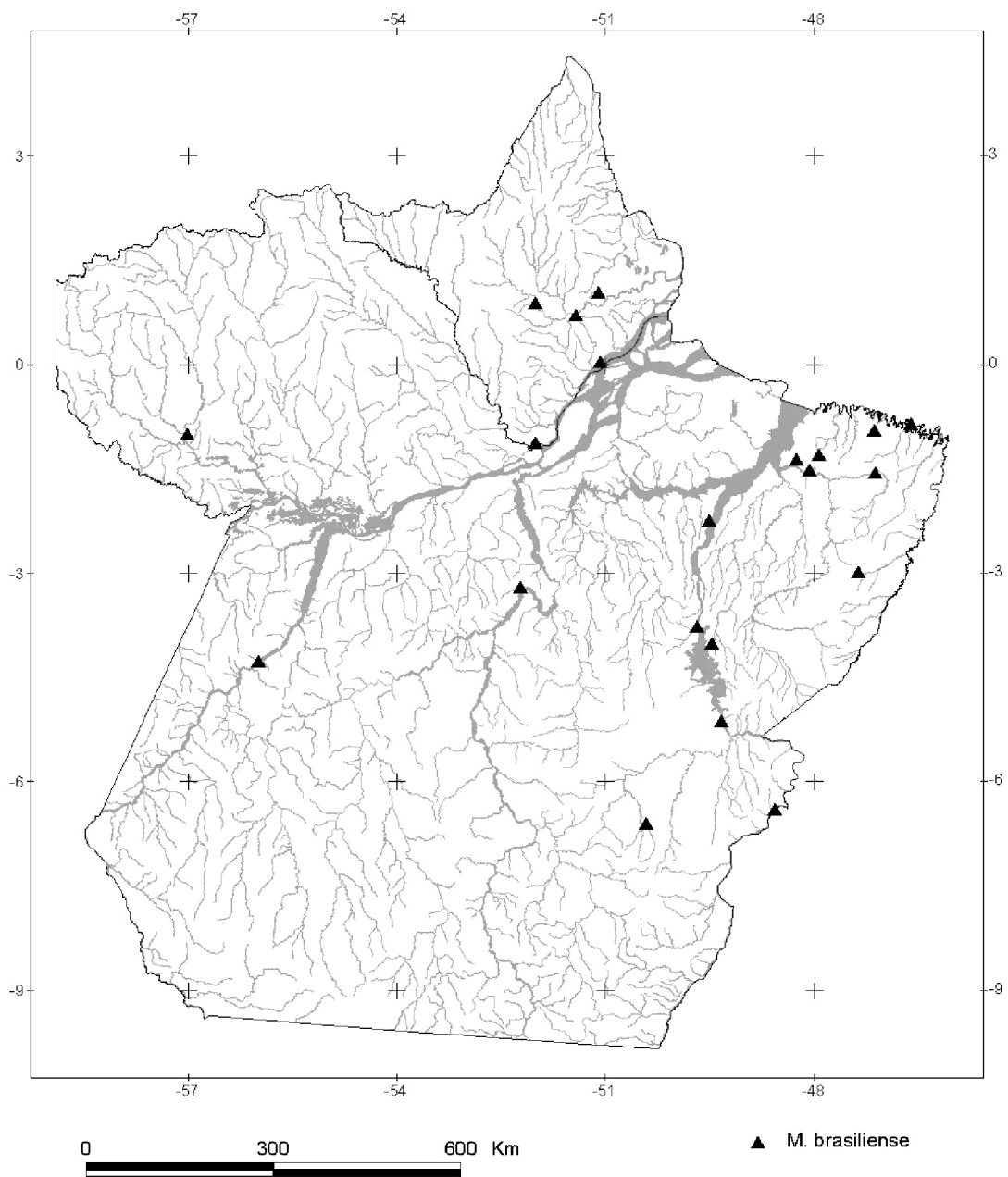


Fig. 92. Distribuição geográfica de *Macrobrachium brasiliense* (Heller) nos estados do Amapá e Pará, Brasil.

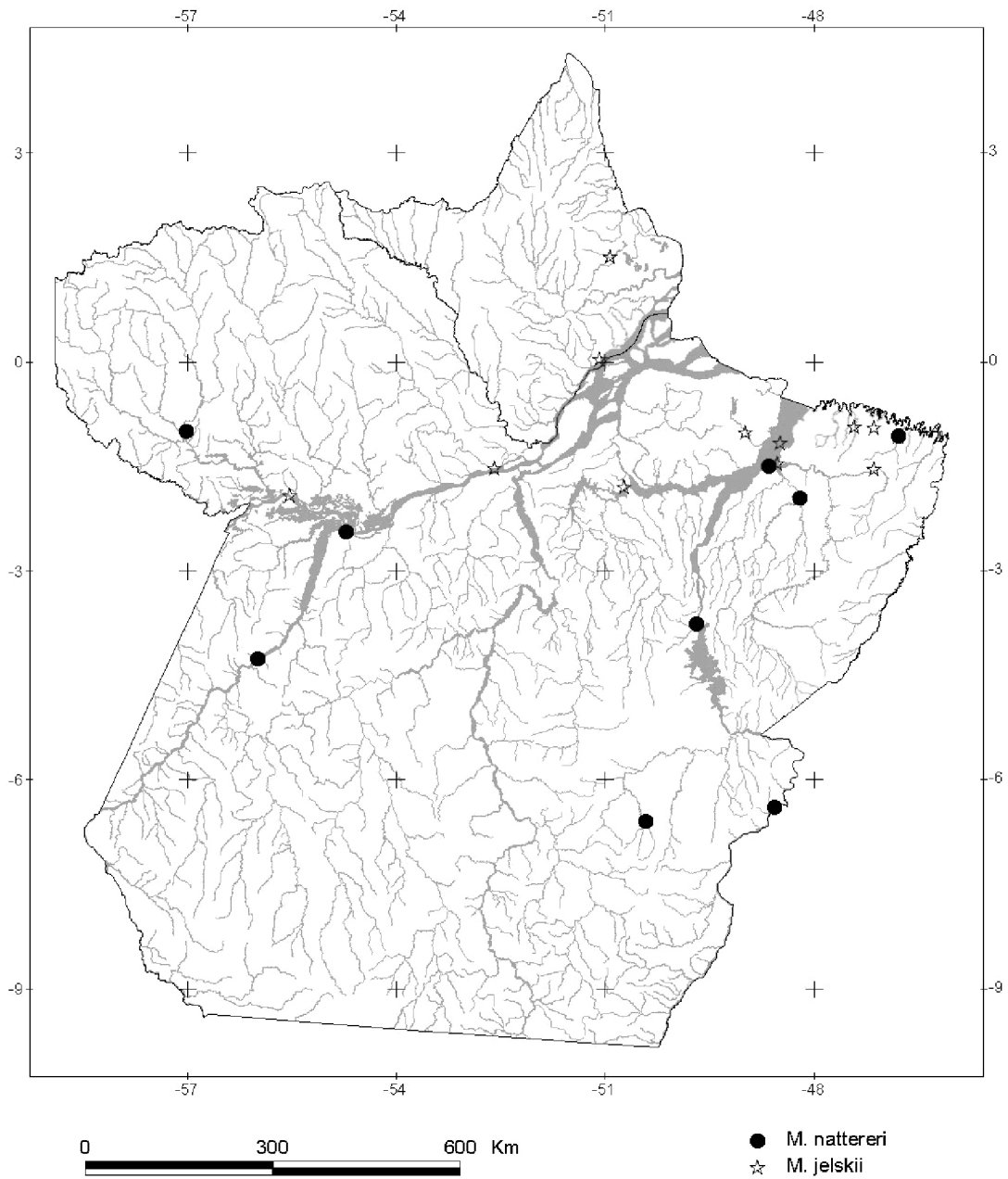


Fig. 92. Distribuição geográfica de *Macrobrachium nattereri* (Heller) e *M. jelskii* (Miers) nos estados do Amapá e Pará, Brasil.

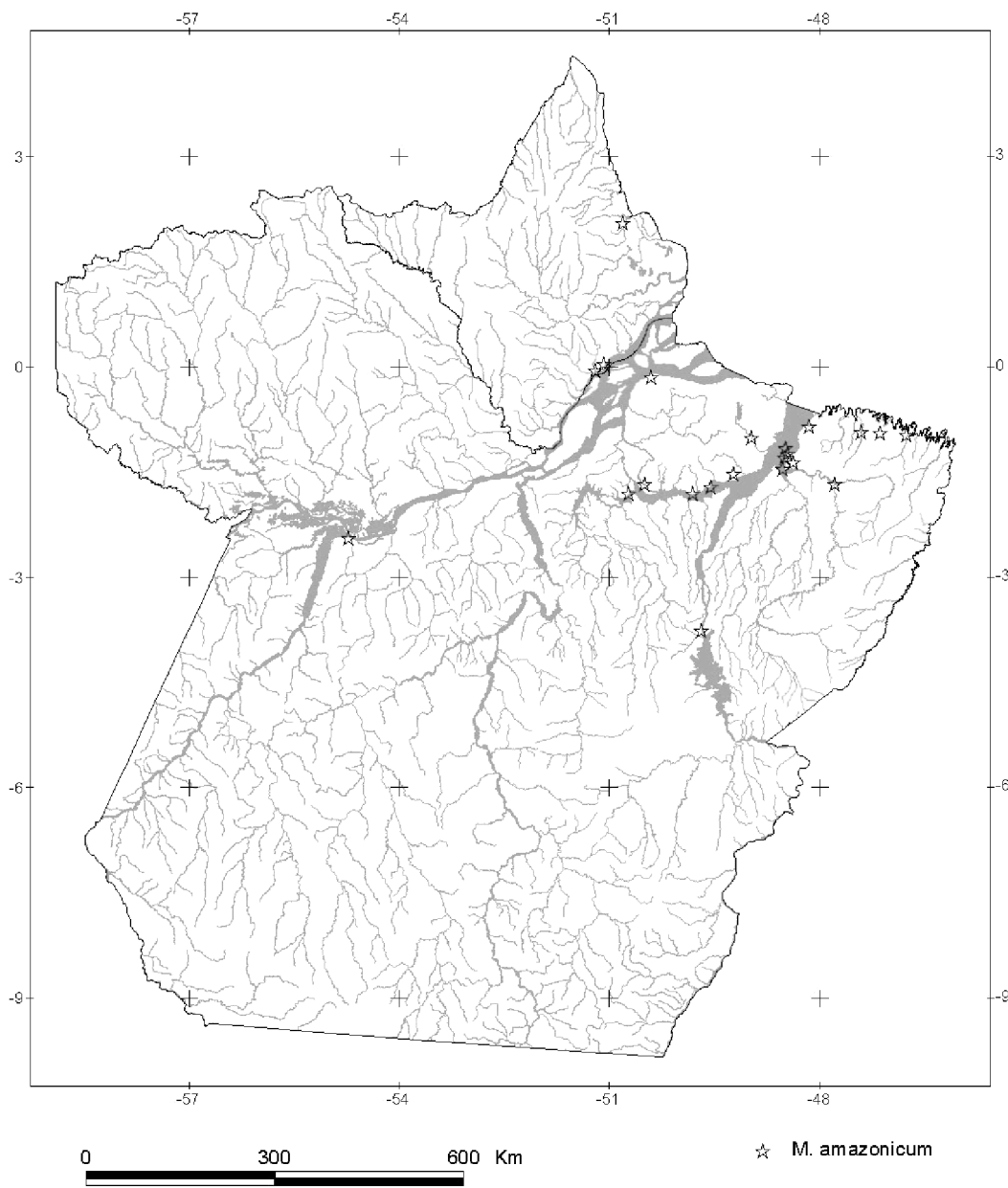


Fig. 94. Distribuição geográfica de *Macrobrachium amazonicum* (Heller) nos estados do Amapá e Pará, Brasil.

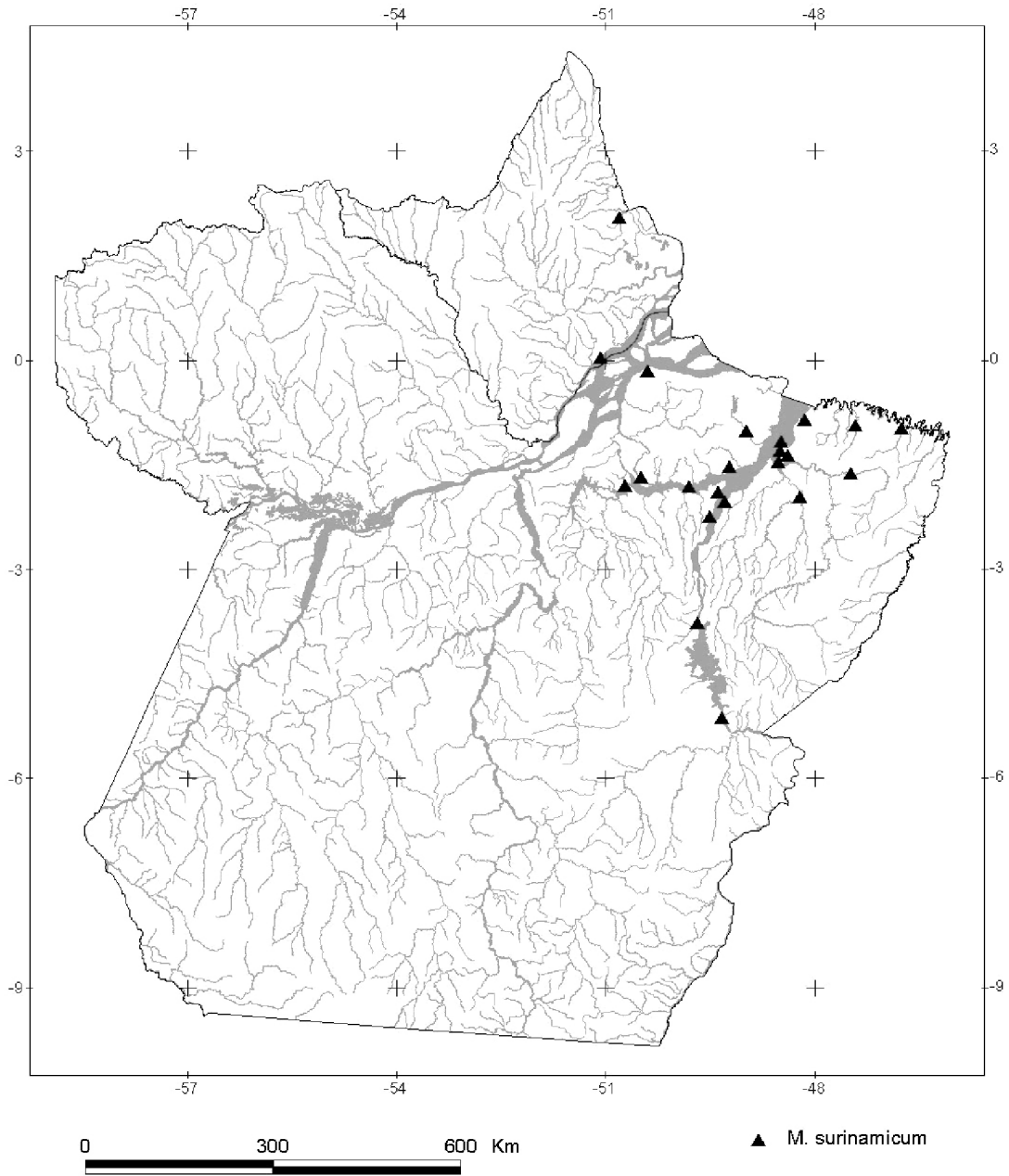


Fig. 95. Distribuição geográfica de *Macrobrachium surinamicum* Holthuis nos estados do Amapá e Pará, Brasil.

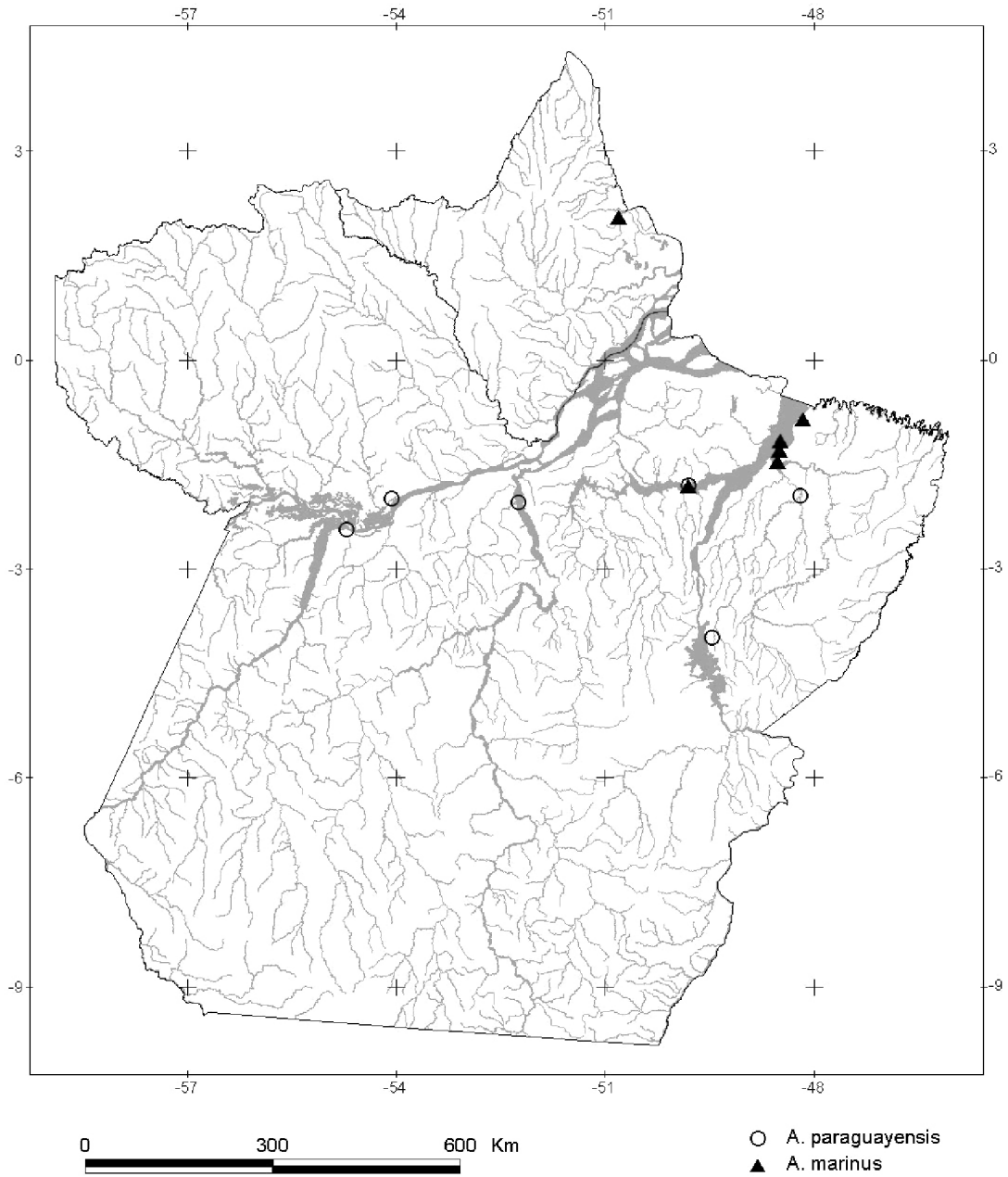


Fig. 96. Distribuição geográfica de *Acetes marinus* Omori e *A. paraguayensis* Hansen nos estados do Amapá e Pará, Brasil.

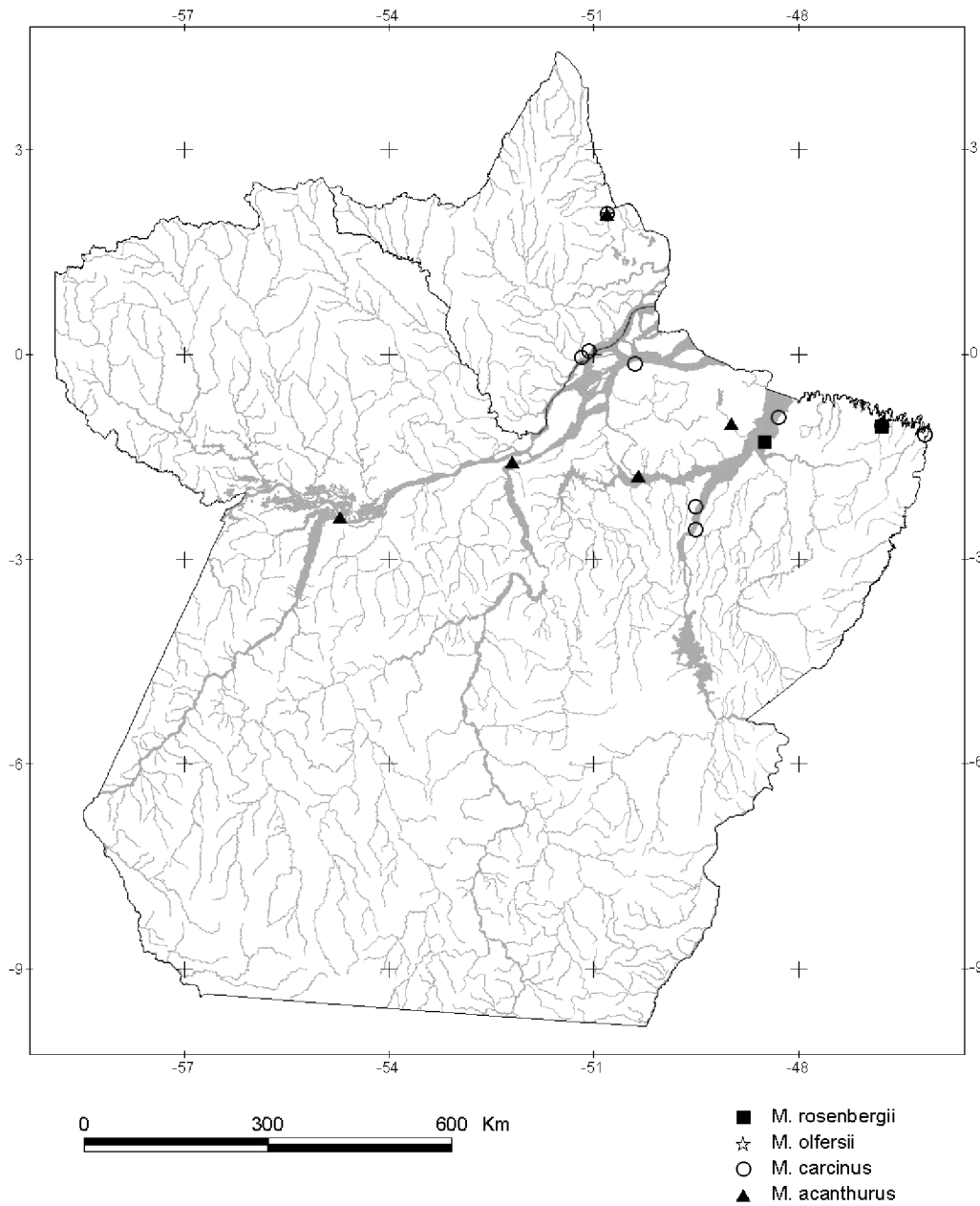


Fig. 97. Distribuição geográfica de *Macrobrachium acanthurus* (Wiegmann), *M. carcinus* (Linnaeus), *M. olfersii* (Wiegmann) e *M. rosenbergii* (De Mann) nos estados do Amapá e Pará, Brasil.

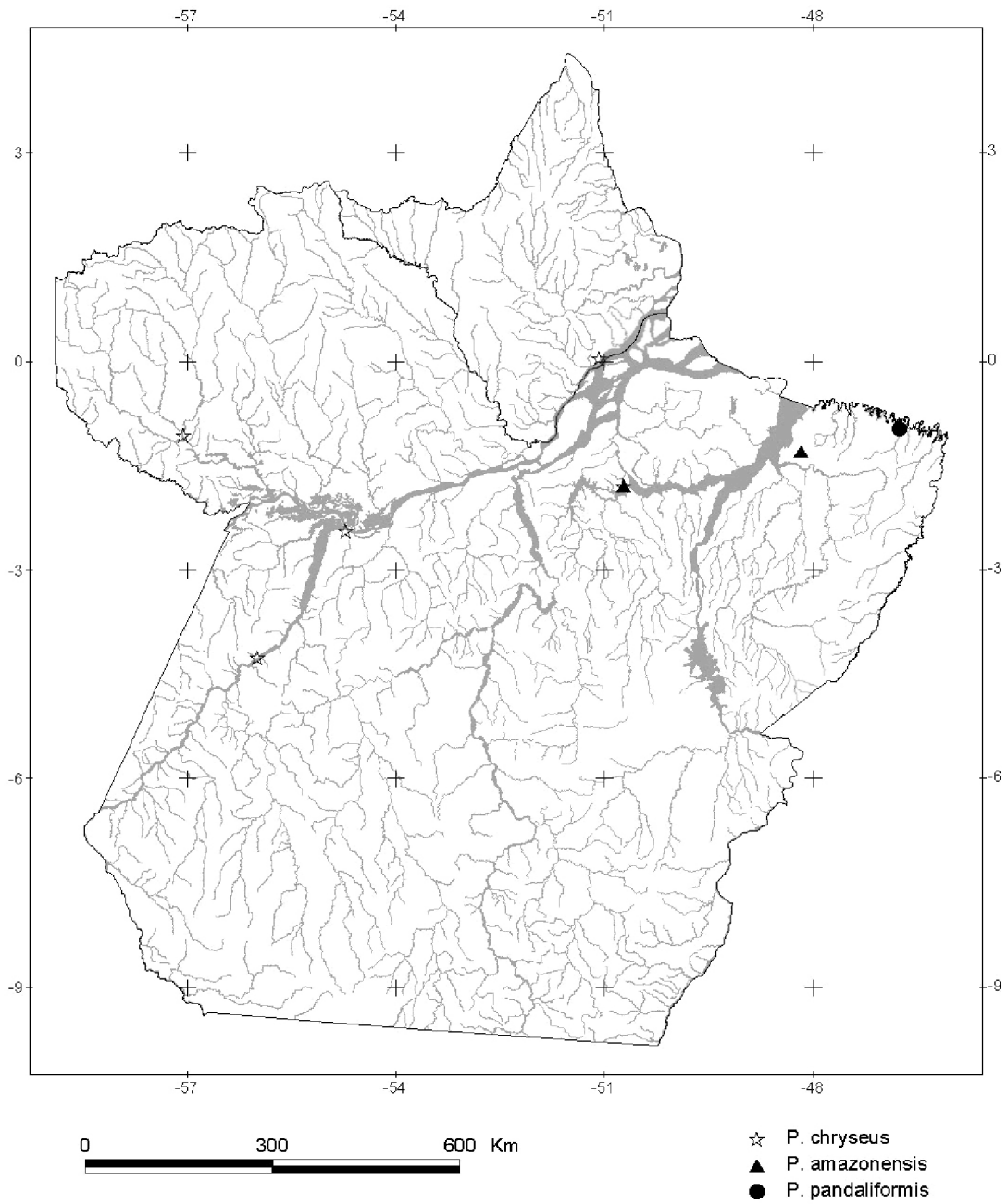


Fig. 98. Distribuição geográfica de *Palaemon pandaliformis* (Stimpson), *Pseudopalaemon amazonensis* Ramos-Porto e *P. chryseus* Kensley & Walker nos estados do Amapá e Pará, Brasil.

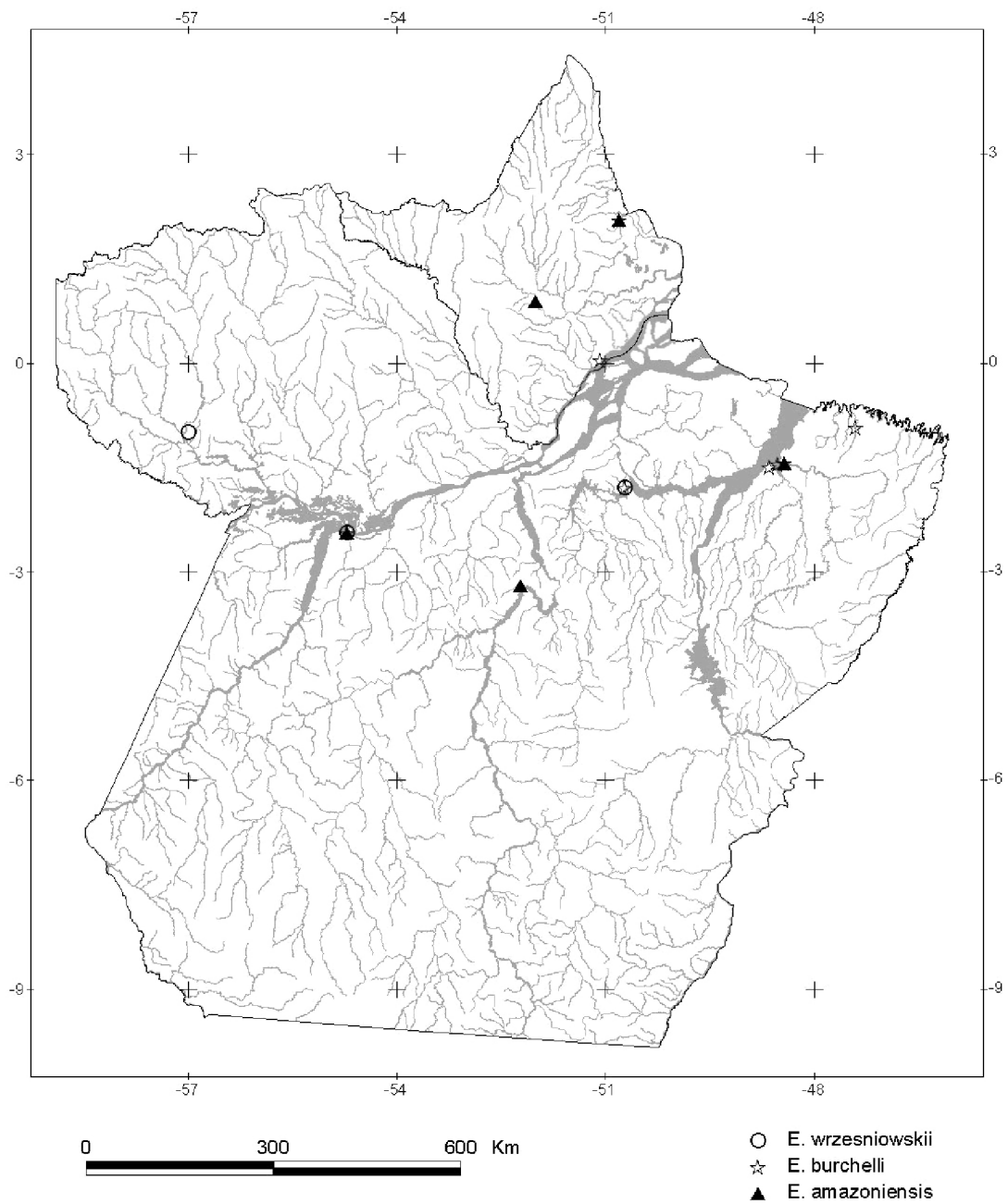


Fig. 99. Distribuição geográfica de *Euryrhynchus amazoniensis* Tiefenbacher, *E. burchelli* Calman e *E. wrzesniowskii* Miers nos estados do Amapá e Pará, Brasil.