

---

PLANCHE 3.

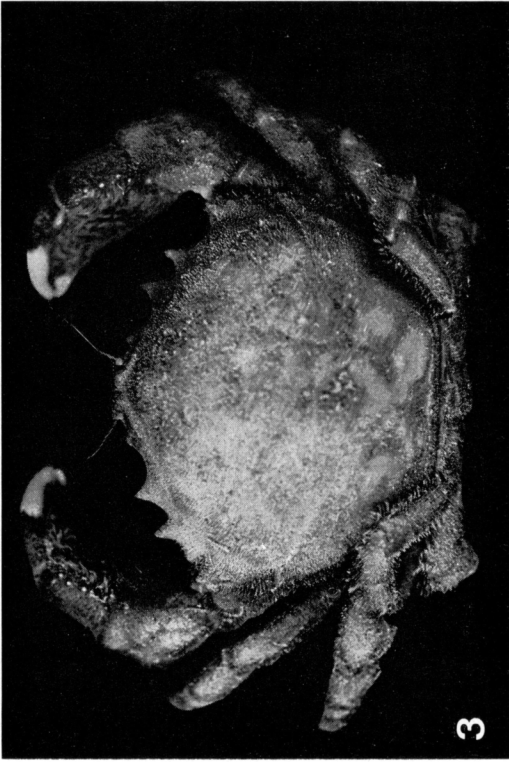
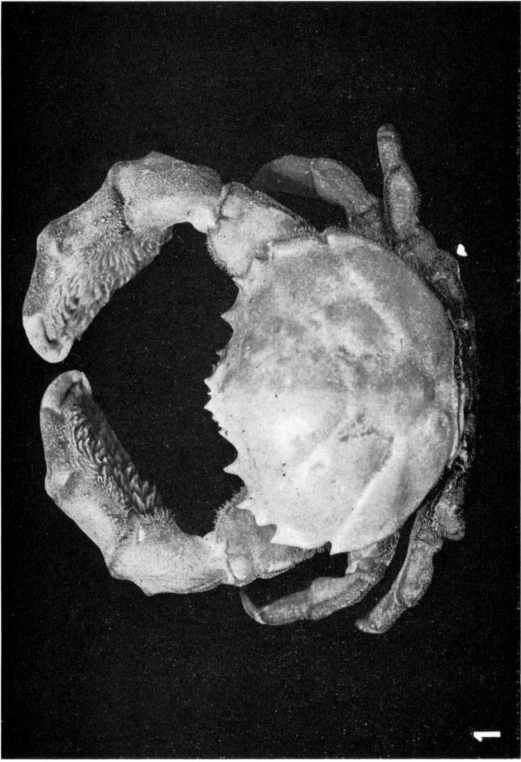
FIG. 1. — *Dromia personata* (L.), ile Banjol, Rovijn : ♂ 71 × 93 mm.

FIG. 2. — *Dromia marmorea* sp. nov., paratype, Pointe-Noire : ♂ 72,5 × 99 mm.

FIG. 3. — *Dromia erythropus* (George Edwards), Barbades (Zoöl. Mus. Amsterdam) : ♂ 70 × 88 mm.

FIG. 4. — *Dromia bollorei* sp. nov., paratype, Mauritanie : ♂ 71,5 × 85 mm.

---



---

PLANCHE 4.

FIG. 1. — *Dromia monodi* Forest et Guinot, Bel air, près de Dakar : ♀ 41,8 × 45,8 mm.

FIG. 2. — Id., holotype, Dakar, « Vers-l'Horizon », st. 11 : ♂ 25,0 × 27,5 mm.

FIG. 3. — Id., au large de Lagoba : ♀ 18,8 × 19,9 mm.

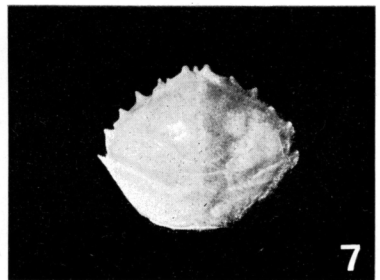
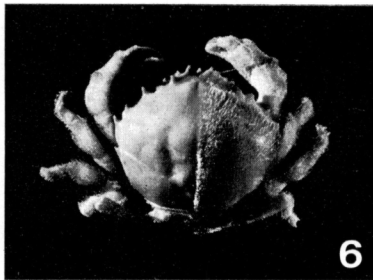
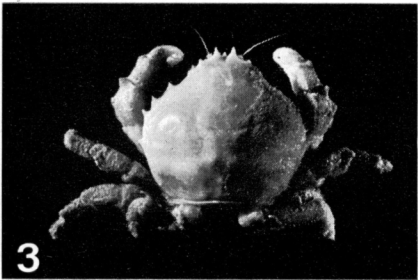
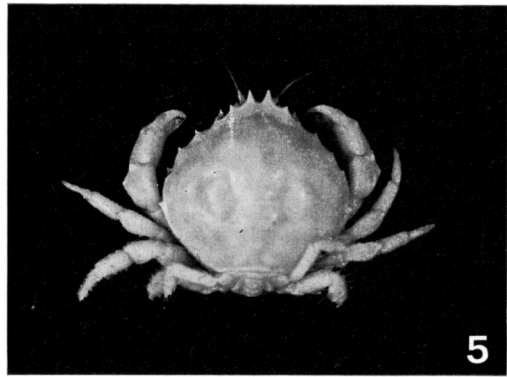
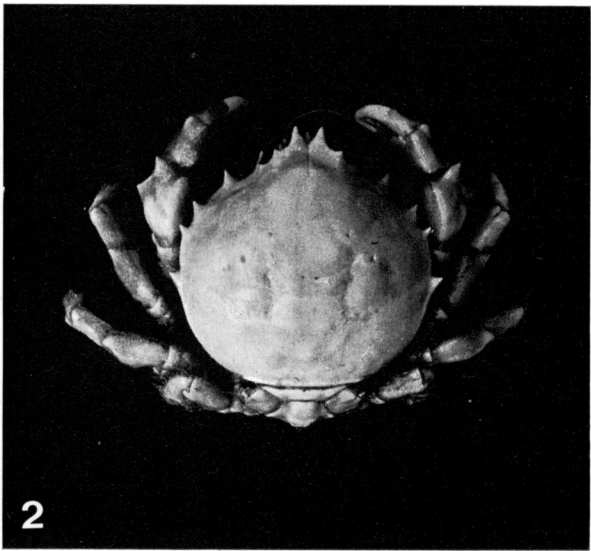
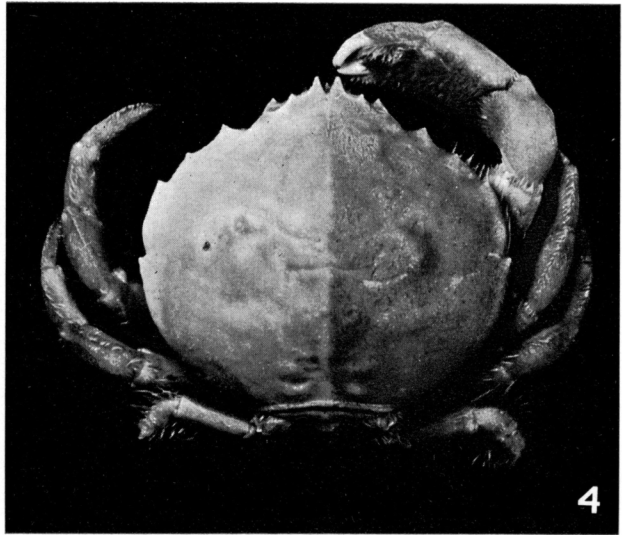
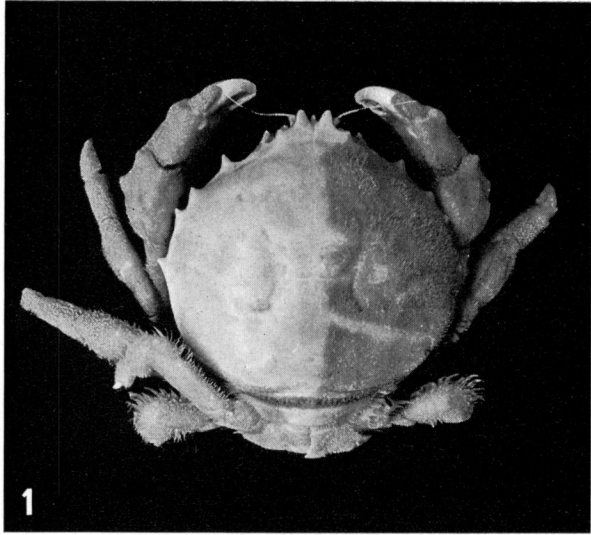
FIG. 4. — *Sternodromia spirostris* (Miers), Guinée portugaise, « Calypso » 1956, st. 6 : ♂ 43,0 × 50,0 mm.

FIG. 5. — Id., Sénégal, « Calypso » 1956, st. 6 : ♂ 17,0 × 17,8 mm.

FIG. 6. — *Dromia personata* (L.), golfe de Gabès, « Thalassa », st. V. 453 : ♂ 18,8 × 20,6 mm.

FIG. 7. — *Dromia marmorea* sp. nov., Gorée, Sénégal : carapace d'une ♀ 21,2 × 25,5 mm.

---



---

PLANCHE 5. — Aspect de la région sternale chez les femelles.

FIG. 1. — *Dromia personata* (L.), ile d'Yeu : ♀ 47 × 58 mm.

FIG. 2. — Id., St. Vaast : ♀ 31 × 36 mm.

FIG. 3. — *Dromia marmorea* sp. nov., paratype, Bel Air, près de Dakar : ♀ 57 × 73 mm.

FIG. 4. — Id., Dakar : ♀ 32,5 × 39,2 mm.

FIG. 5. — *Dromia erythropus* (George Edwards), West Indies (B.M.) : ♀ 51 × 62 mm.

FIG. 6. — *Dromia nodosa* A. Milne Edwards et Bouvier, côte atlantique du Maroc : ♀ 33,2 × 38,7 mm.

---