

Fig. 2. *Haemocinus elatus* (A. Milne-Edwards, 1873). Colour in life, female (25.8 by 17.5 mm) (ZRC).

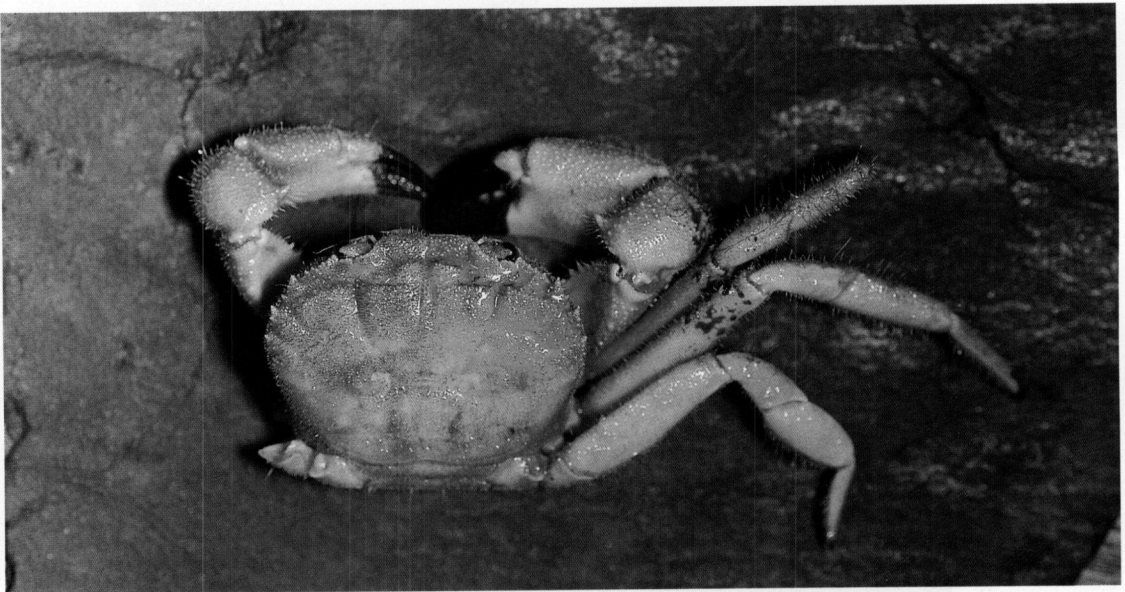


Fig. 3. *Haemocinus elatus* (A. Milne-Edwards, 1873). Male (21.7 by 16.2 mm) (RMNH 32048).

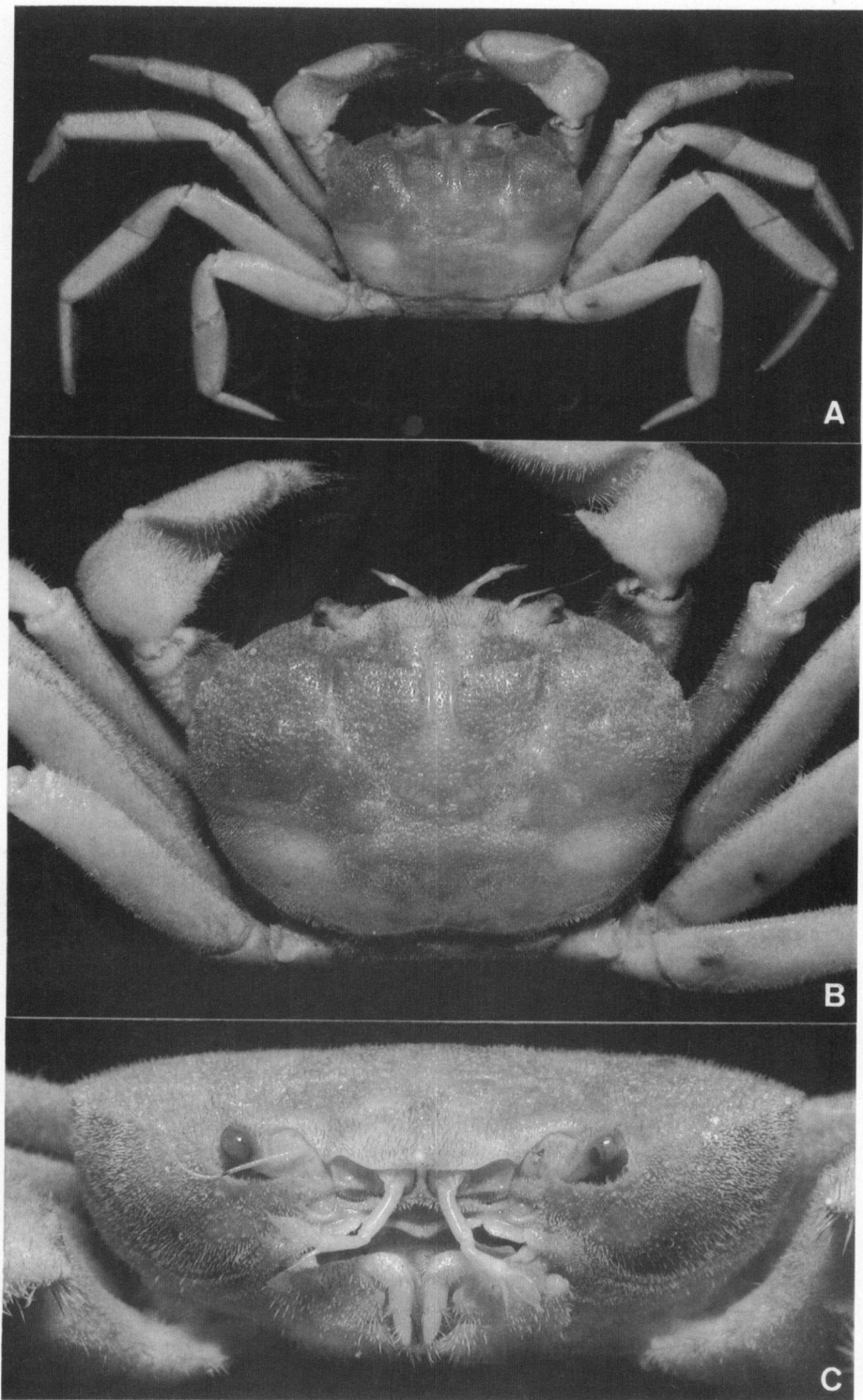


Fig. 4. *Haemocinus elatus* (A. Milne-Edwards, 1873). Female (25.8 by 17.5 mm) (ZRC). A, overall view; B, carapace; C, frontal view.

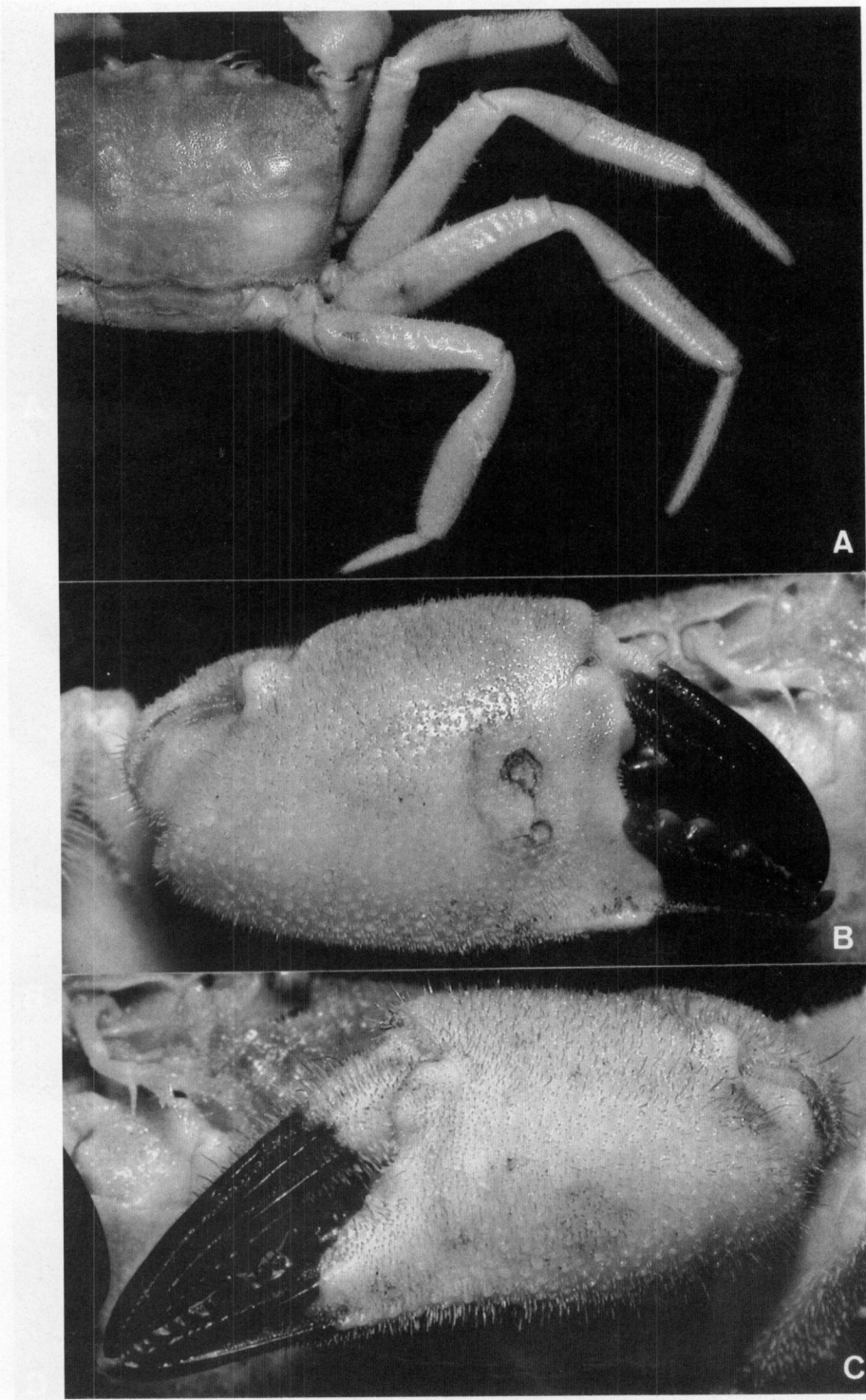


Fig. 5. *Haemocinus elatus* (A. Milne-Edwards, 1873). Female (25.8 by 17.5 mm) (ZRC). A, right ambulatory legs; B, right chela; C, left chela.

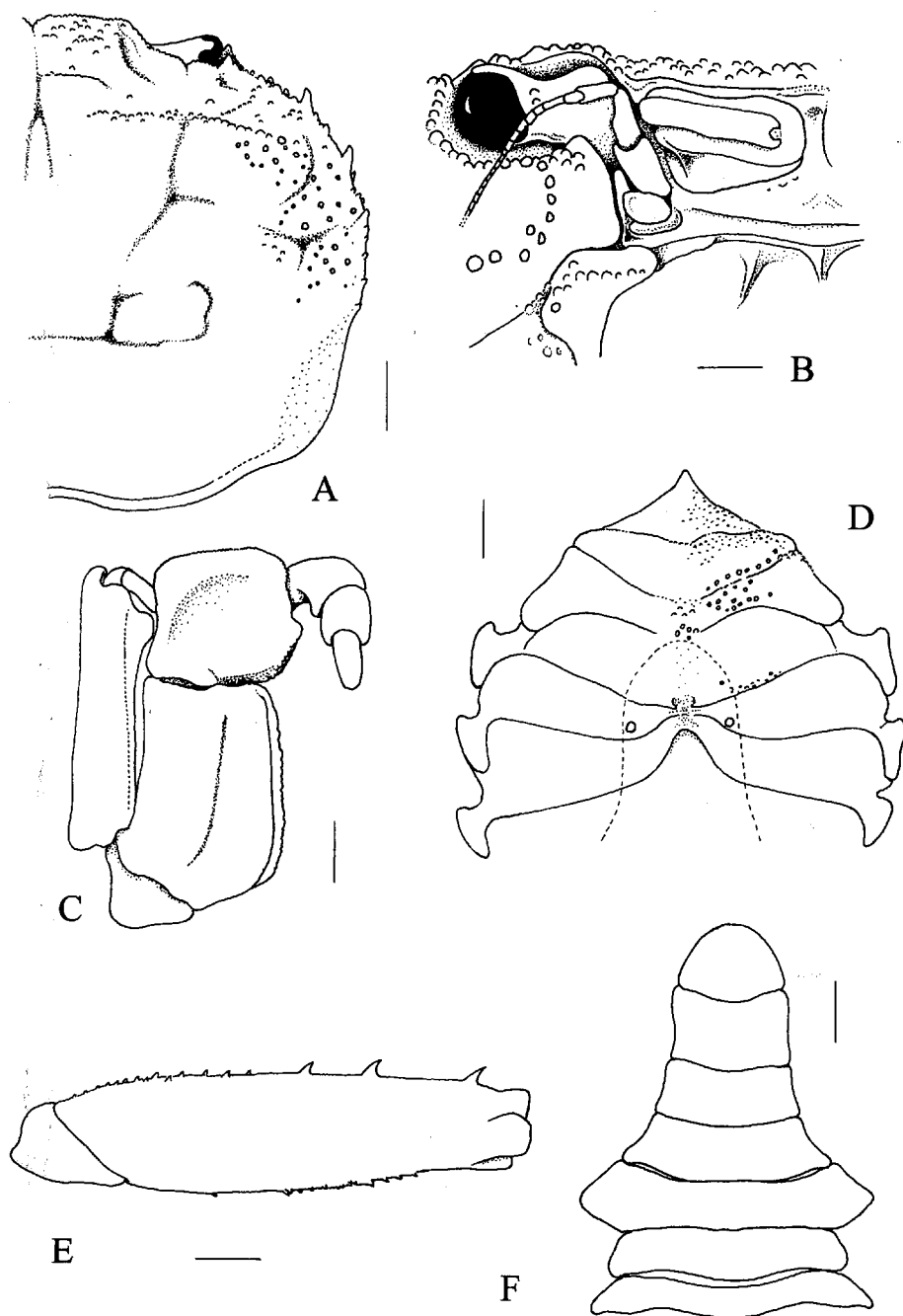


Fig. 6. *Haemocinus elatus* (A. Milne-Edwards, 1873). Male (21.7 by 16.2 mm) (RMNH 32048). A, right side of carapace (denuded); B, right side of front (denuded); C, right third maxilliped; D, anterior thoracic sternum (right side not denuded, covered with very short pubescence); E, left merus of second ambulatory leg; F, abdomen. Scales: A, D-F = 2.0 mm, B, C = 1.0 mm.

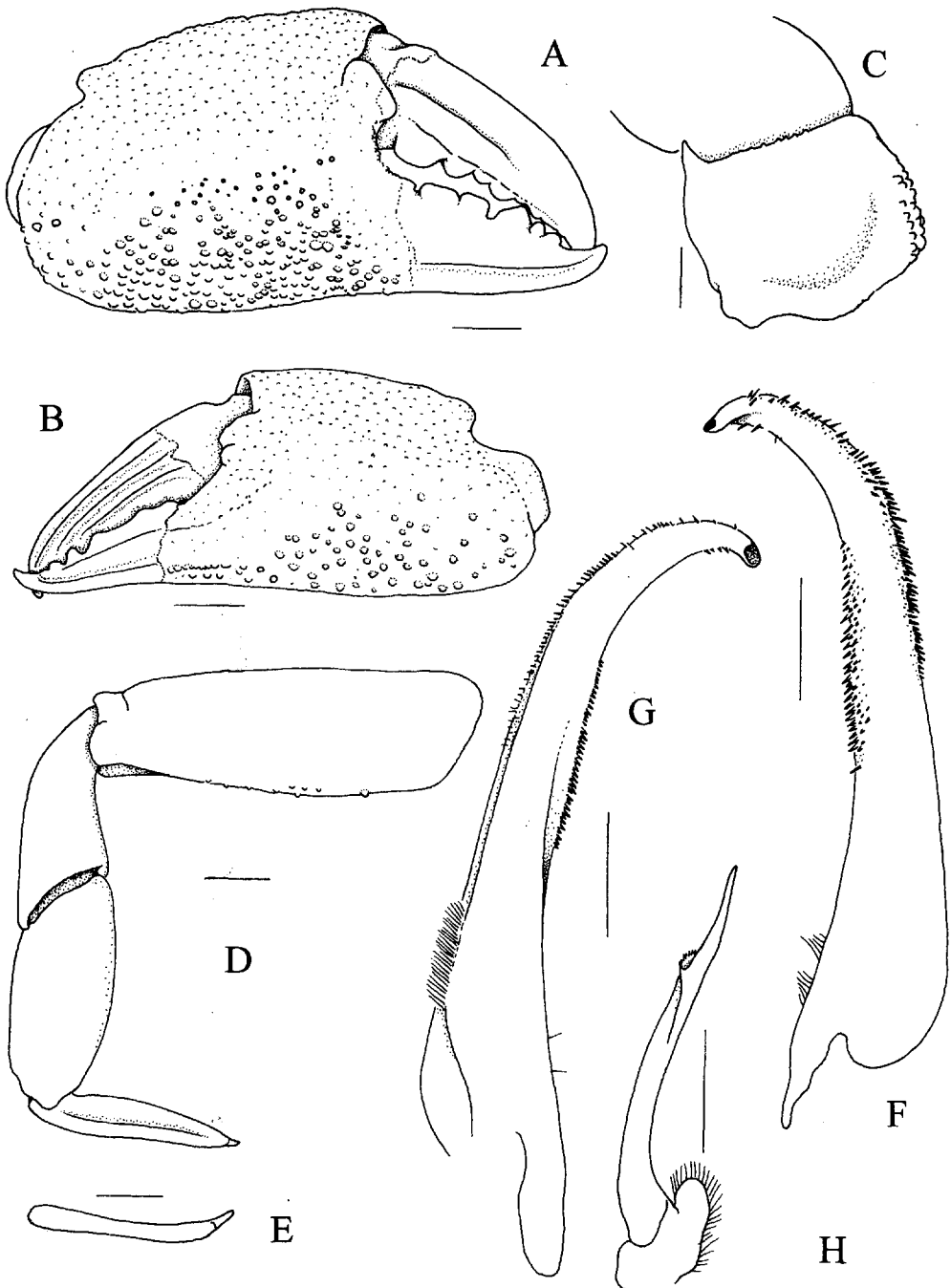


Fig. 7. *Haemocinus elatus* (A. Milne-Edwards, 1873). Male (21.7 by 16.2 mm) (RMNH 32048). A, right chela (denuded); B, left chela (denuded); C, right carpus of cheliped; D, left fourth ambulatory leg (denuded); E, dactylus of left fourth ambulatory leg (marginal view); F, dorsal view of left G1; G, ventral view of left G1; H, left G2. Scales: A-E = 2.0 mm, F-H = 1.0 mm.

印度太平洋區的毛刺蟹科 XVII—高身毛刺蟹的正名 (甲殼綱，十足目，短尾類)

黃禎麟

新加坡國立大學

摘要

產於太平洋，總是被稱為高身毛刺蟹(*Pilumnus elatus*)的分類地位一直成謎，本文釐清了此問題。本種既不屬於毛刺蟹屬(*Pilumnus*)，也不是毛刺蟹科(*Pilumnidae*)的成員，事實上更接近扁平毛刺蟹屬(*Planopilumnus*)，而隸屬於扁平毛刺蟹亞科(*Planopilumninae*)，假團扇蟹科(*Pseudoziidae*)。本文將其另命名為新屬，稱為血紅蟹屬(*Haemocinus*)。文中提供詳細特徵描述及圖。

關鍵詞：分類學，假團扇蟹科，*Pseudoziidae*，毛刺蟹科，*Pilumnidae*，菲律賓，新屬。

