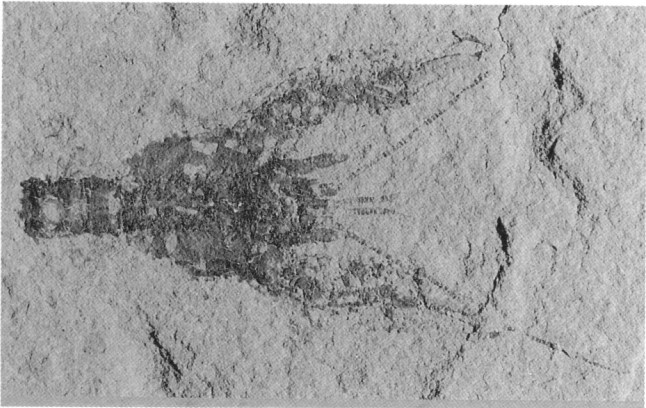
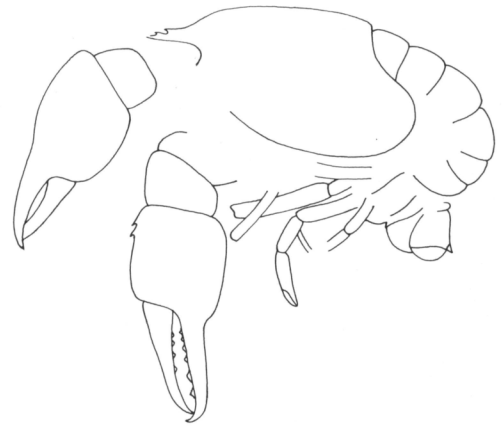
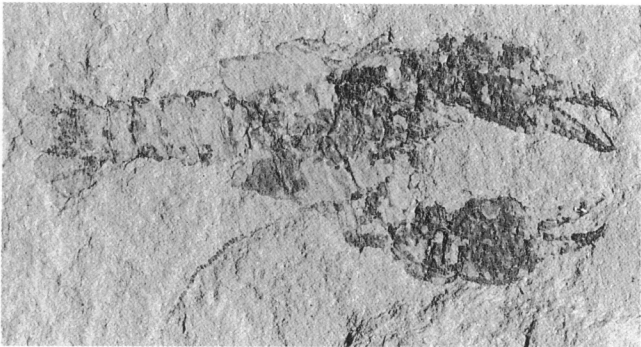
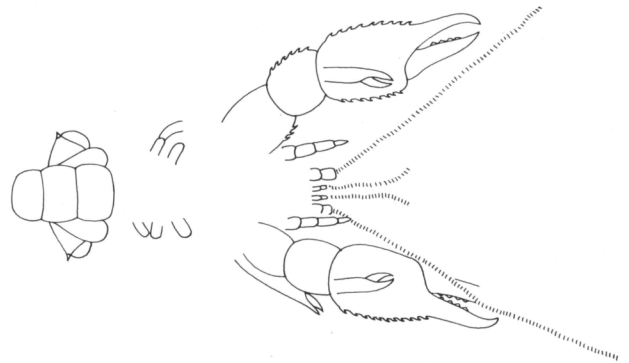




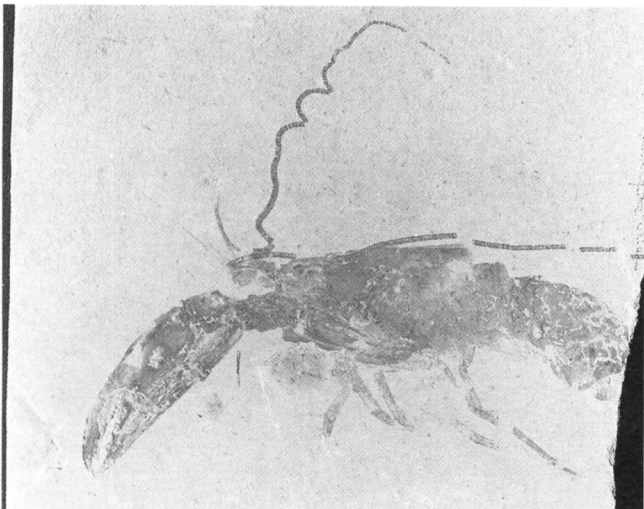
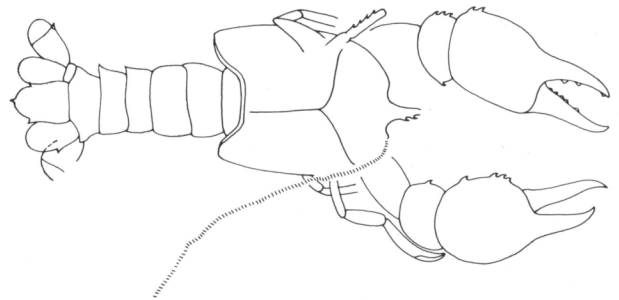
1



2



3



4

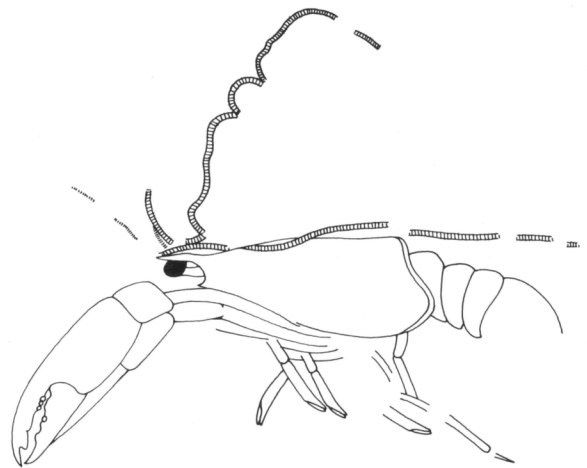
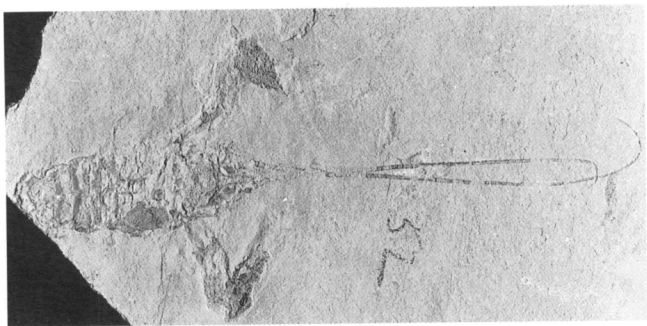
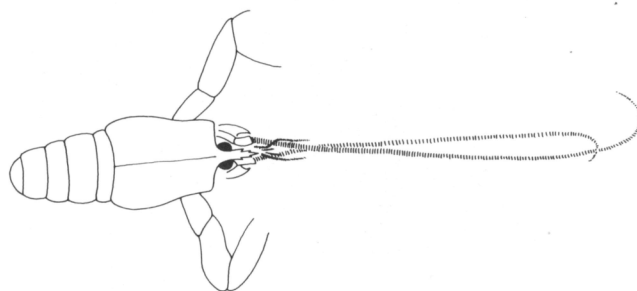


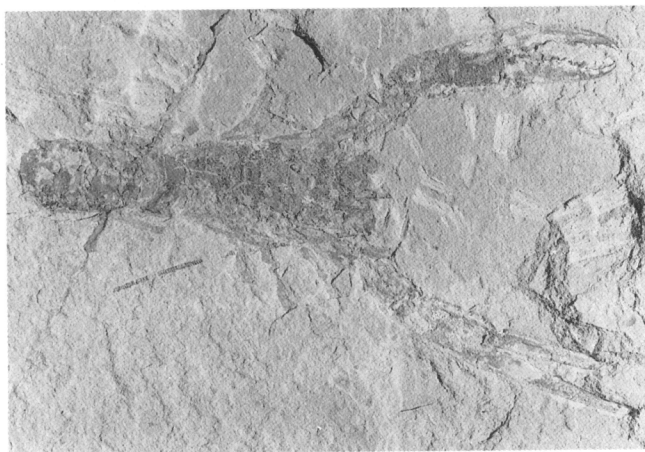
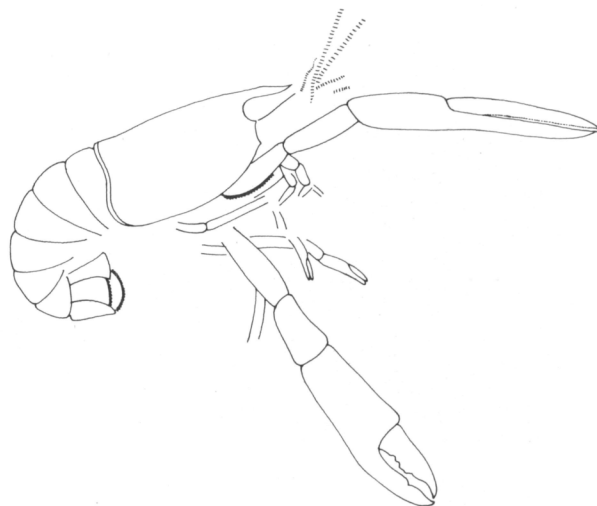
Plate X - 1) *Eryma cretacea* Roger, 1946, n.cat. MSNM i12269, photo and reconstruction (x 3.1); 2) *Eryma cretacea* Roger, 1946, n.cat. MSNM i12314, photo and reconstruction (x 2.2); 3) *Eryma cretacea* Roger, 1946, n.cat. MSNM i12317, photo and reconstruction (x 1.2); 4) *Homarus hakeleensis* (Fraas, 1878), n.cat. MSNM i7601, photo and reconstruction (x 0.9).



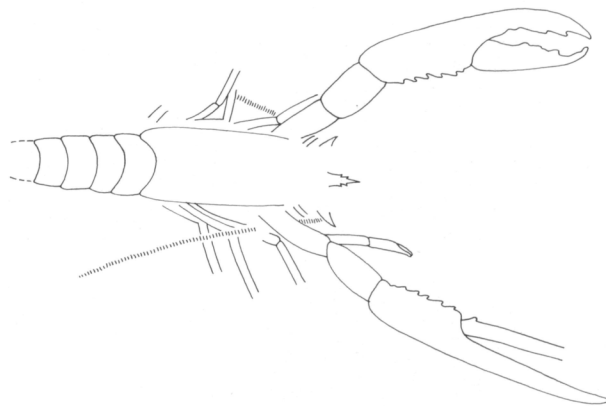
1



2



3



4

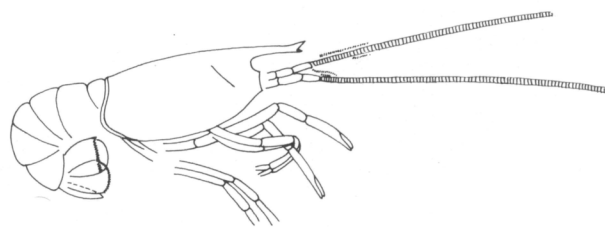
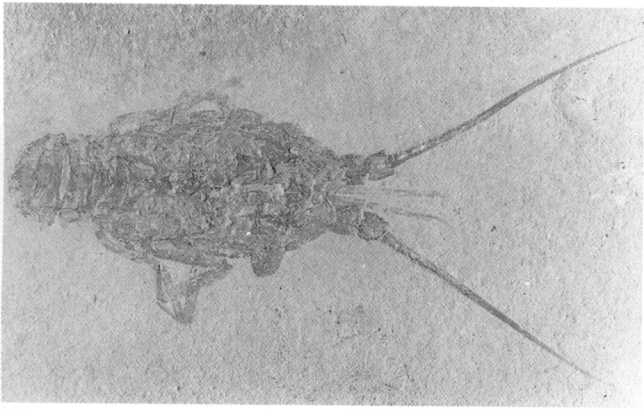
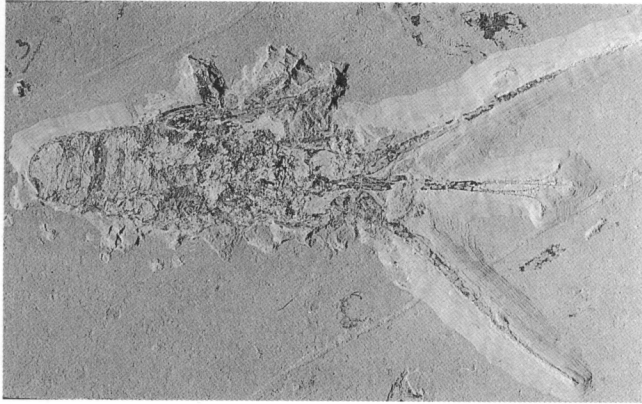
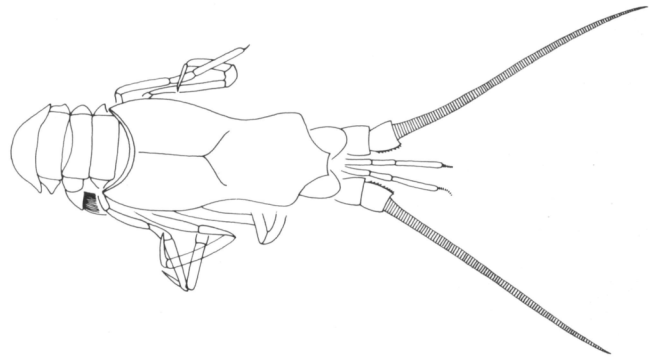


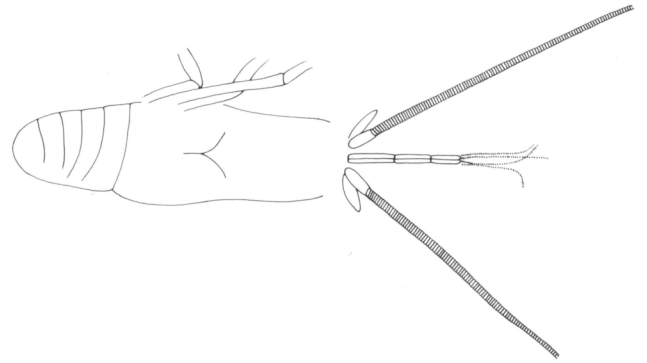
Plate XI - 1) *Homarus hakeiensis* (Fraas, 1878), n.cat. MSNM i6047, photo and reconstruction (x 0.5); 2) *Homarus hakeiensis* (Fraas, 1878), n.cat. MSNM i11835, photo and reconstruction (x 1); 3) *Homarus hakeiensis* (Fraas, 1878), n.cat. MSNM i11836, photo and reconstruction (x 0.8); 4) *Homarus hakeiensis* (Fraas, 1878), n.cat. MSNM i12598, photo and reconstruction (x 0.8).



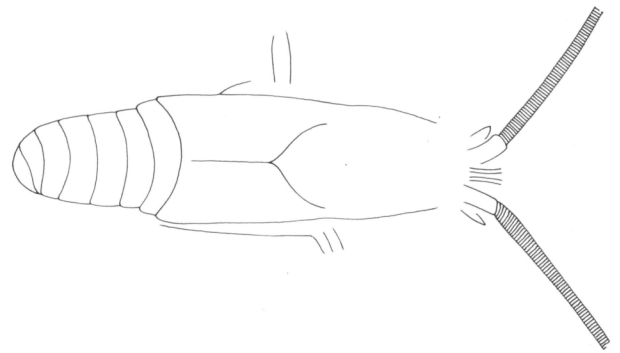
1



2



3



4

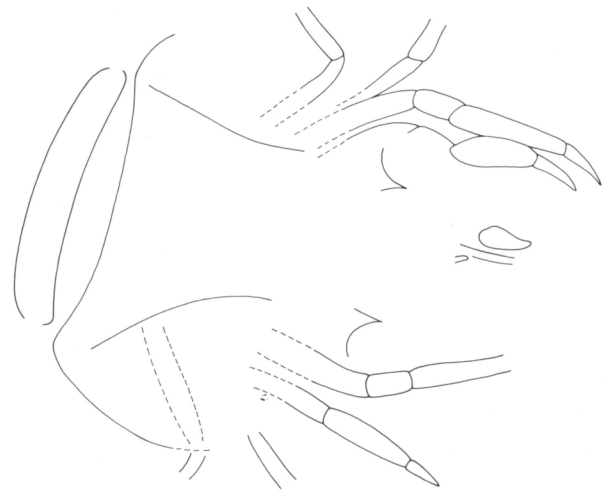


Plate XII - 1) *Linuparus* sp., n.cat. MSNM i6063, photo and reconstruction (x 1.4); 2) *Linuparus* sp., n.cat. MSNM i10406, photo and reconstruction (x 0.2); 3) *Linuparus* sp., n.cat. MSNM i6064, photo and reconstruction (x 0.6); 4) *Palinurus* sp., n.cat. MSNM i12245, photo and reconstruction (x 2).