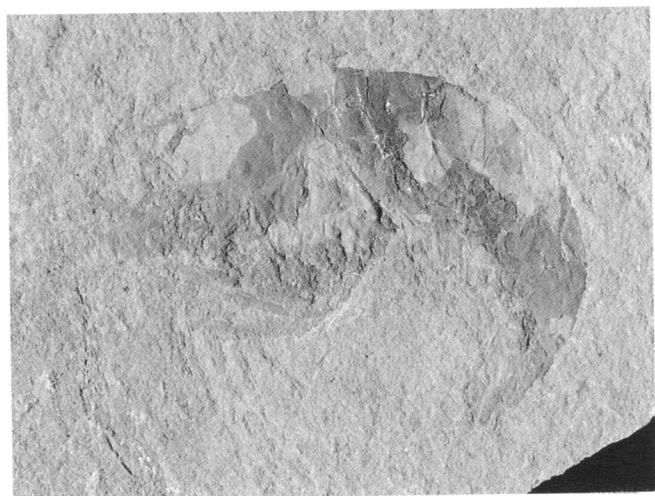
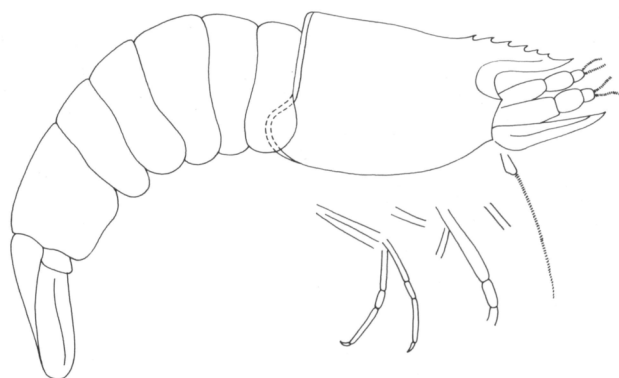
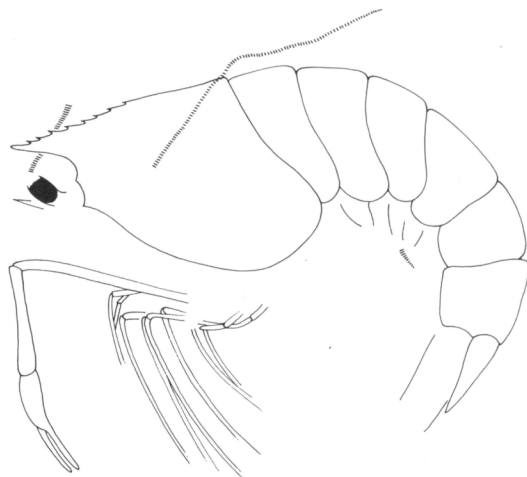




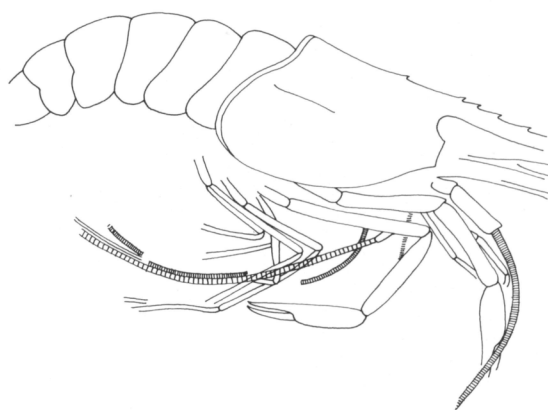
1



2



3



4

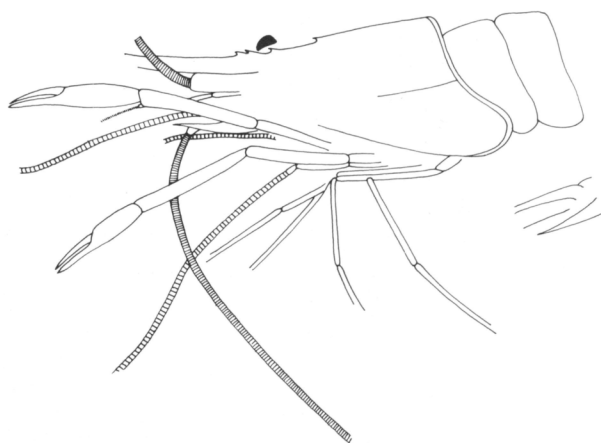


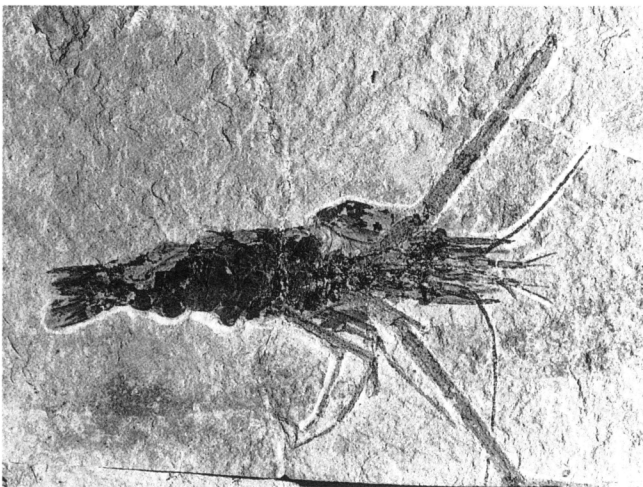
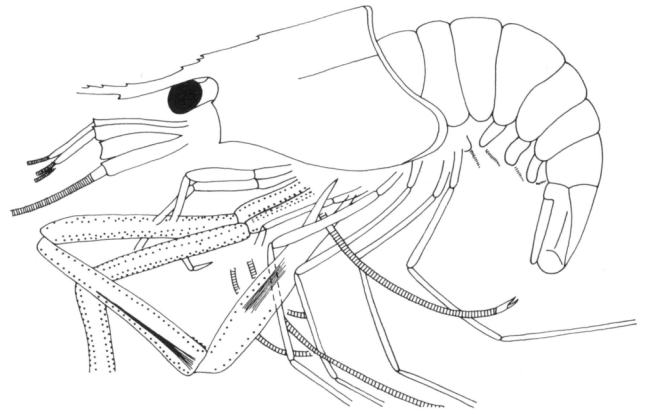
Plate V - 1) *Microchela rostrata* n.gen. n.sp., n.cat. MSNM il2350, photo and reconstruction (x 2.5); 2) *Indeterminate penaeid*, n.cat. MSNM il2523, photo and reconstruction (x 3.1); 3) *Carpopenaeus callirostris* Glaessner, 1945, n.cat. MSNM il2501, photo and reconstruction (x 1); 4) *Carpopenaeus callirostris* Glaessner, 1945, n.cat. MSNM i6021, photo and reconstruction (x 1).



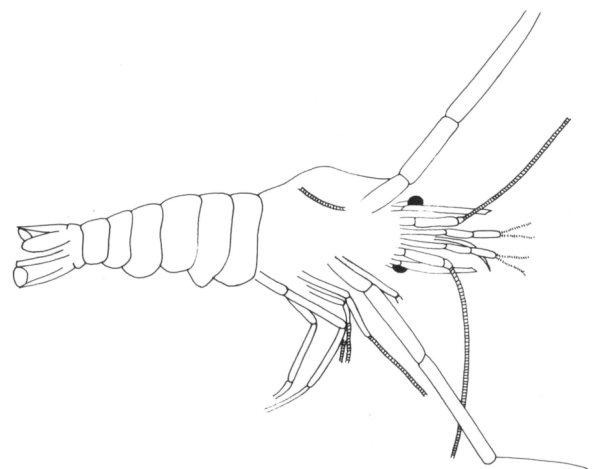
1



2



3



4

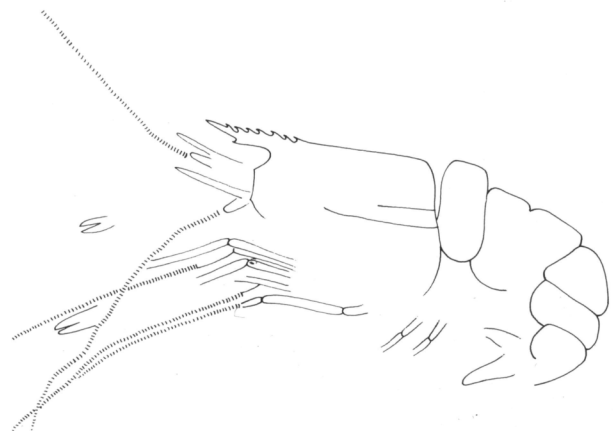


Plate VI - 1) *Carpopenaeus callirostris* Glaessner, 1945, n.cat. MSNM i6031, photo and reconstruction (x 1.2); 2) *Carpopenaeus callirostris* Glaessner, 1945, n.cat. MSNM i12322, photo and reconstruction (x 1.1); 3) *Carpopenaeus callirostris* Glaessner, 1945, n.cat. MSNM i13524, photo and reconstruction (x 1.8); 4) *Carpopenaeus septemspinatus* (Dames, 1886), holotype, MB.A. 215 (K66), photo and reconstruction (x 1.2).