

EXPLANATION OF PLATE.

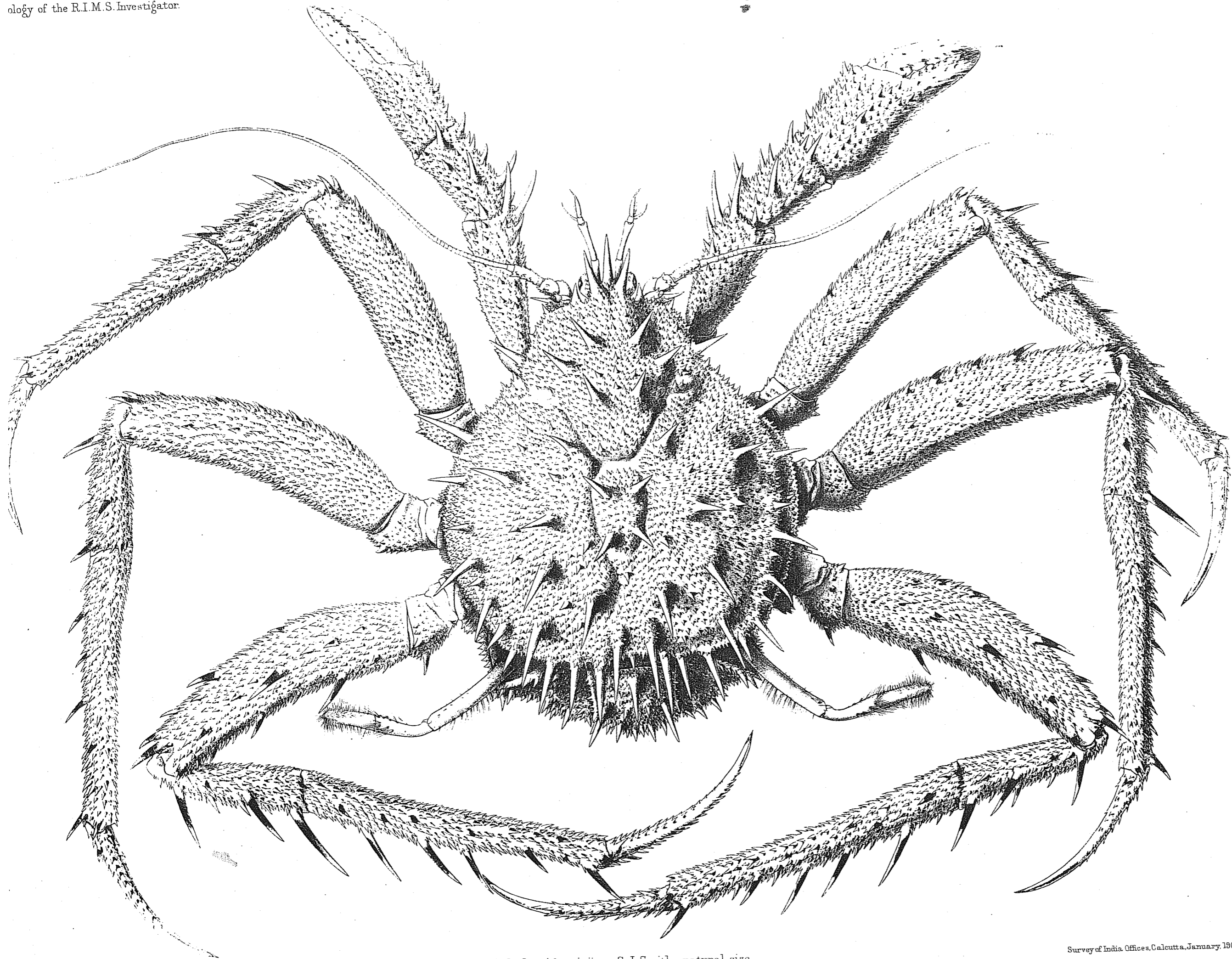
---

CRUSTACEA.

---

PLATE LXVIII.

*Lithodes agassizii*, S. I. Smith, Bull. Mus. Comp. Zool., X,  
1882, p. 8.



*Lithodes Agassizii*, ♀. S. I. Smith. natural size.

Survey of India, Offices, Calcutta, January, 1906.

EXPLANATION OF PLATE.

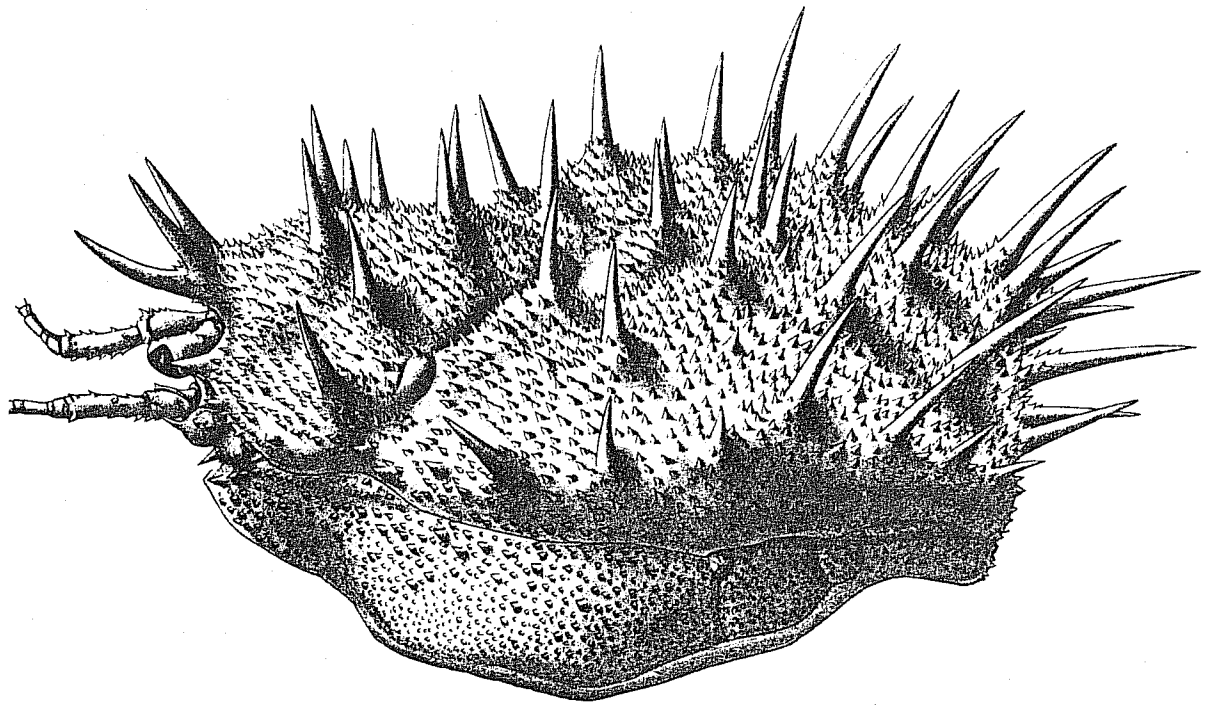
—+—  
CRUSTACEA.  
—+—

PLATE LXIX.

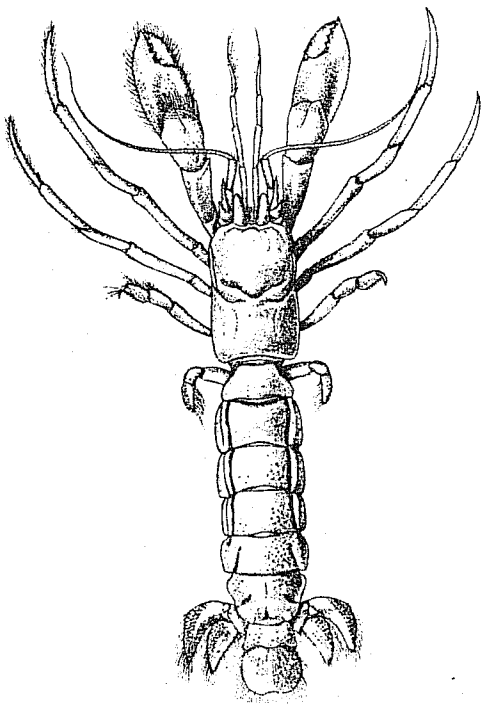
*Fig. 1.*—*Lithodes agassizii*, S. I. Smith, Bull. Mus. Comp. Zool., X, 1882, p. 8.

*Figs. 2, 2a.*—*Chiroplataea macgilchristi*, Alcock, Catalogue of Indian Decapod Crustacea, Pt. II, Anomura, Fasc. I, Pagurides, 1905, p. 18.

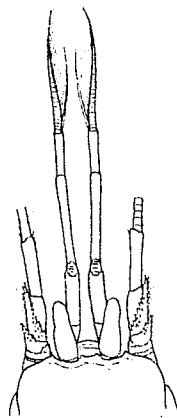
*Figs. 3, 3a.*—*Cancellus investigatoris*, Alcock, *Op. cit.*, p. 77.



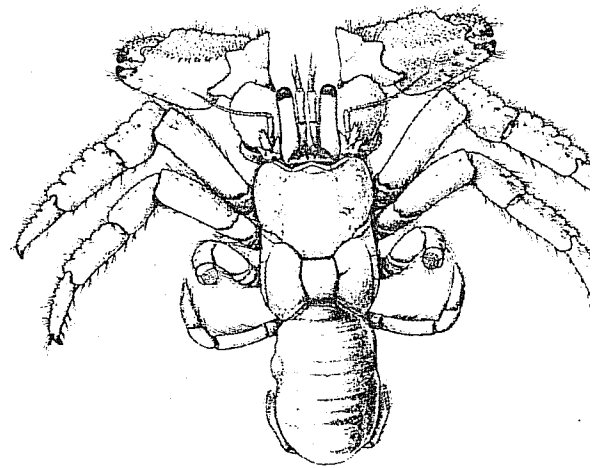
1.



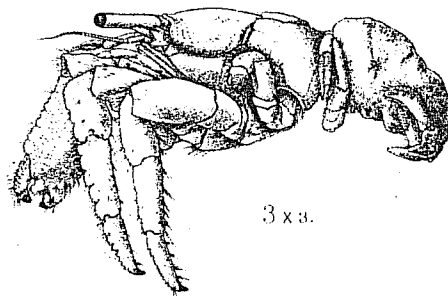
2 x 15.



2a x 3.



3a x 3.



3 x 3.

1. *Lithodes agassizii*, natural size. 2, 2a. *Chiroplataea macgilchristi*, ♀. 3, 3a. *Cancellus investigatoris*, ♂.

EXPLANATION OF PLATE.

---

CRUSTACEA.

---

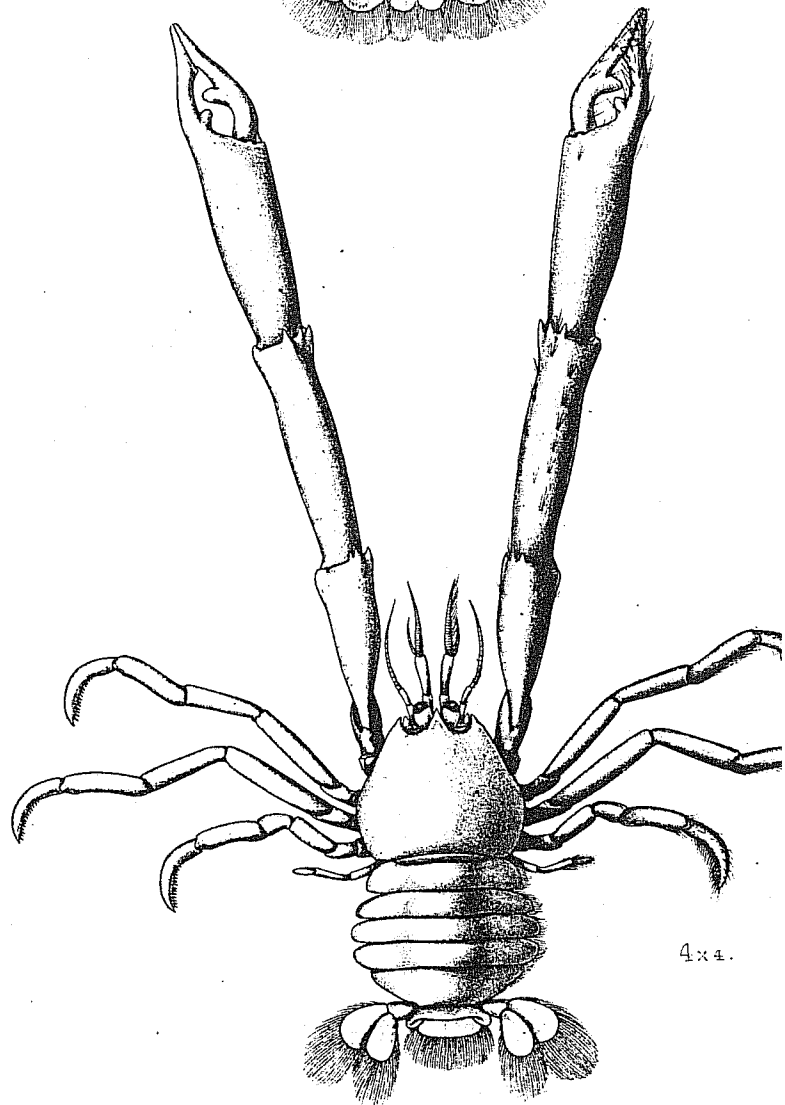
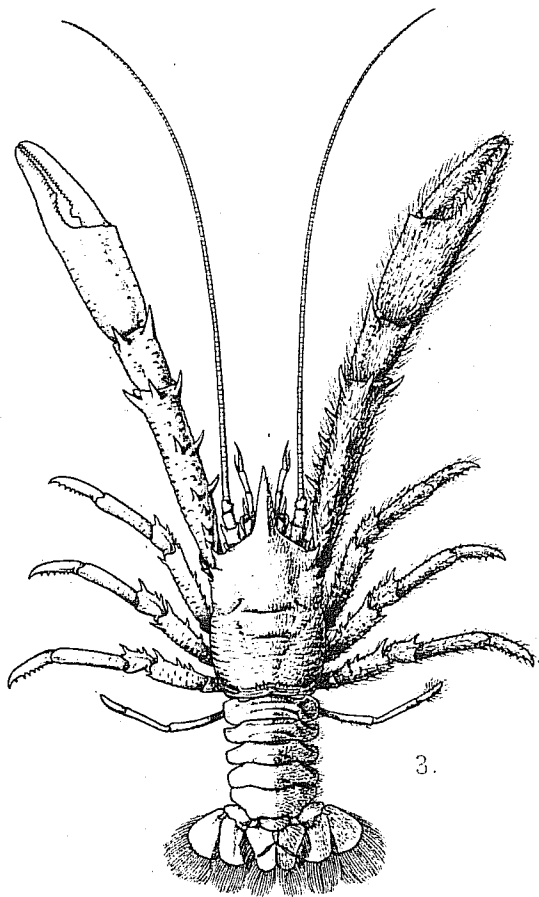
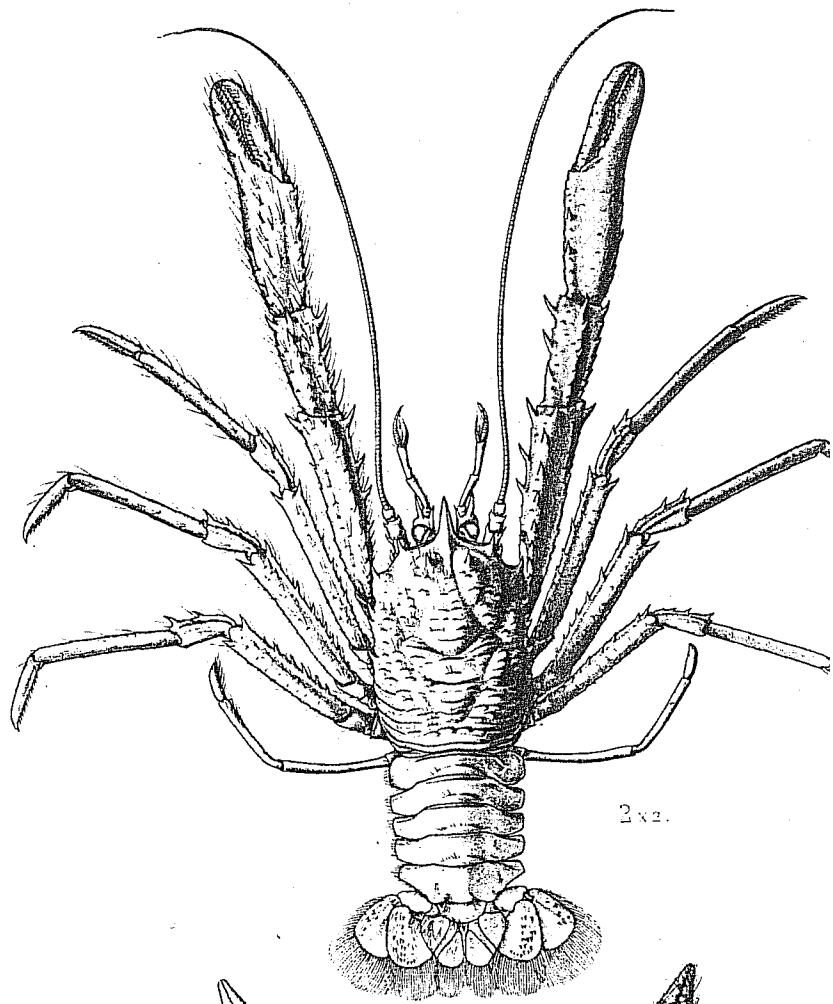
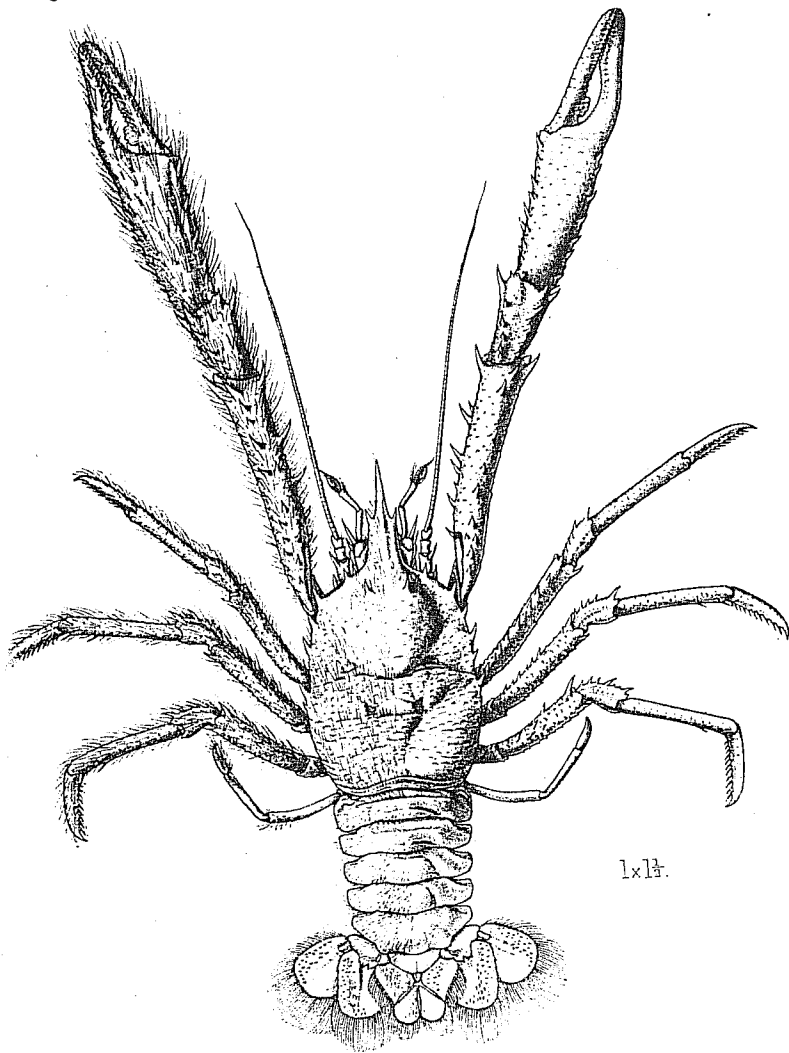
PLATE LXX.

1.—*Munidopsis trifida*, Henderson, Annals and Magazine History, Series 5, Vol. XVI, 1885, p. 415; and Challenger 888, p. 156, pl. xvi. fig 2.

2.—*Munidopsis spinipes*, MacGilchrist, Ann. and Mag. Ser. 7, Vol. XV, March, 1905, p. 247.

3.—*Munidopsis dasyopus*, Alcock, Ann. Mag. Nat. Hist., p. 329; and Cat. Indian Deep Sea Crust. Macrura and 1901, p. 252.

4.—*Uroptychus glyphodactylus*, MacGilchrist, Ann. Mag. March, 1905, p. 249.



1. *Munidopsis (Galathodes) trifida*.  
3. *Munidopsis dasypus*, ♂.

2. *Munidopsis spinipes*, ♀.  
4. *Uroptychus glyphodaetylus*, ♂.

EXPLANATION OF PLATE.

---

CRUSTACEA.

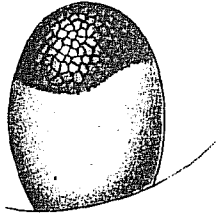
---

PLATE LXXI.

*Figs. 1, 1a, 1b, 1c, 1d.*—*Uroptychus glyphodactylus*,  
MacGilchrist, Ann. Mag. Nat. Hist., March, 1905, p. 249.

*Figs. 2, 2a.*—*Heterocarpus longirostris*, MacGilchrist, *Op. cit.*,  
p. 237.

*Fig. 3.*—*Iconaxiopsis laccadivensis*, Alcock and Anderson,  
J. A. S. B., Vol. LXIII, pt 2, 1894, p. 162; and Alcock, Cat. Indian  
Deep Sea Crust. Macrura and Anomala, 1901, p. 195.



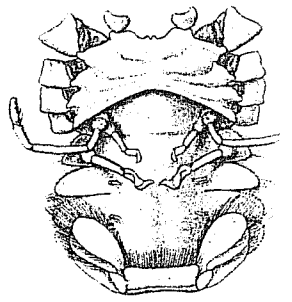
1a x 30.



1b x 72.



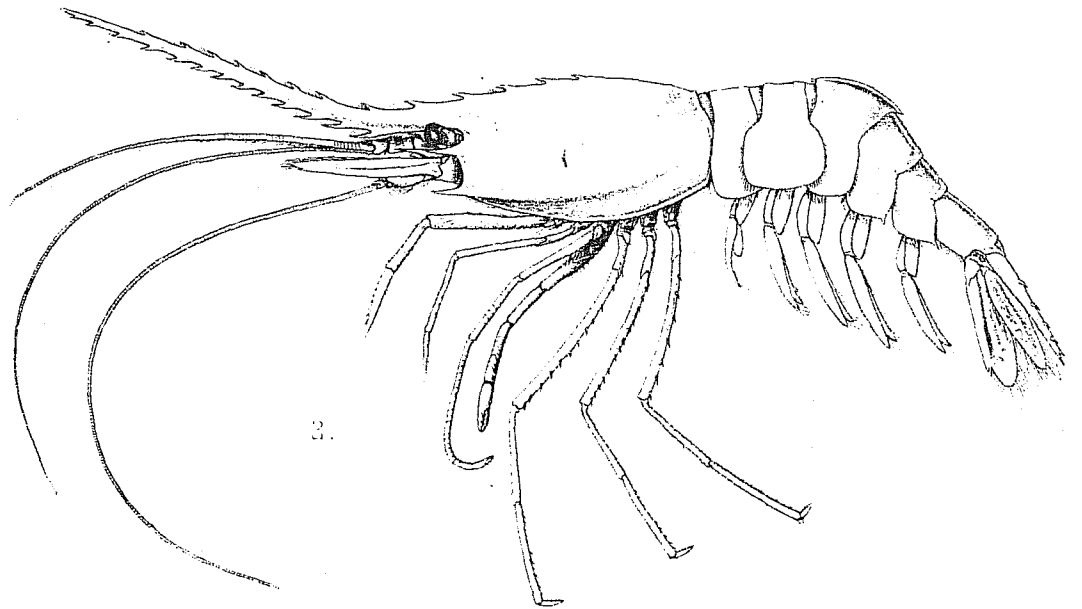
1x a.



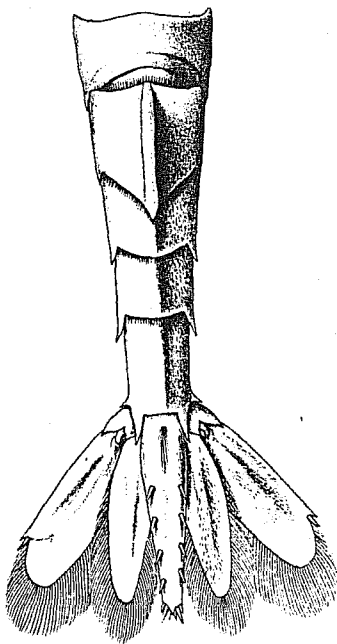
1c x 6.



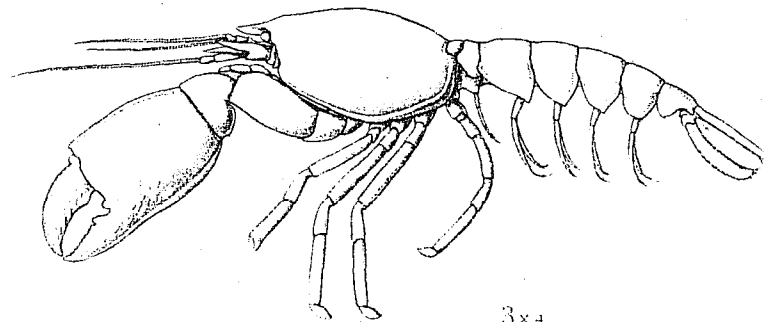
1d x 3.



2.



2a x 14.



3 x 4.

1, 1a, 1b. *Uroptychus glyphodactylus*. ♀  
2, 2a. *Heterocarpus longirostris*. ♂.

1c, 1d. *Uroptychus glyphodactylus*. ♂.  
3. *Iconaxiopsis laccadivensis*.



EXPLANATION OF PLATE.

---

CRUSTACEA.

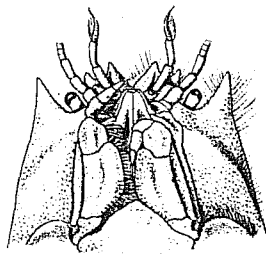
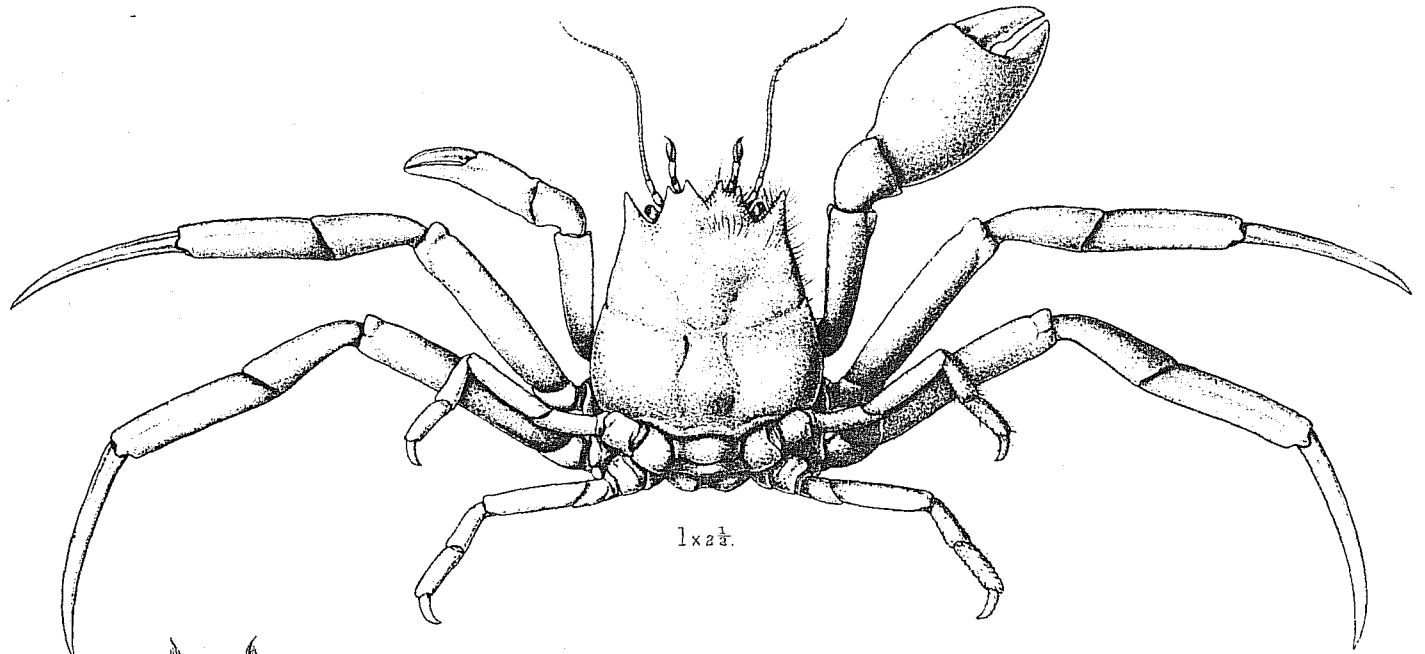
---

PLATE LXXII.

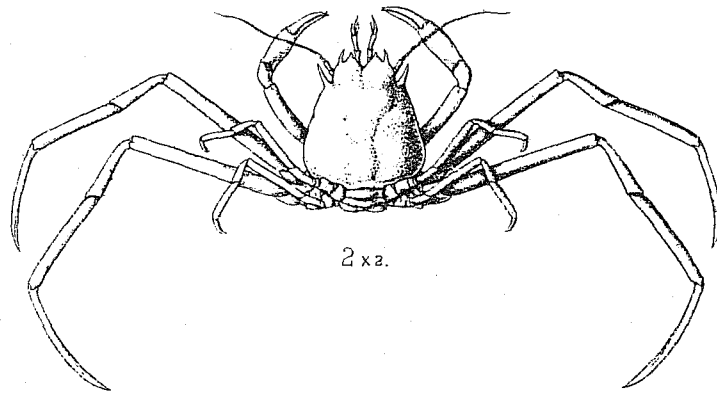
*Figs. 1, 1a.*—*Ethusa hirsuta*, McArdle, Ann. Mag. Nat. Hist., Ser. 7, Vol. VI, Nov., 1900, p. 474.

*Figs. 2, 2a.*—*Ethusa desciscens*, Alcock, Carc. Faun. Ind., Oxyst p. 286, and Investigator Deep Sea Brachyura, 1899, p. 35.

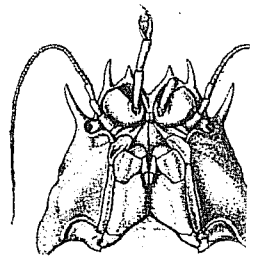
*Figs. 3, 3a.*—*Ethusa investigatoris*, Alcock, *Op. cit.*, p. 285, and Investigator Deep Sea Brachyura, 1899, p. 34.



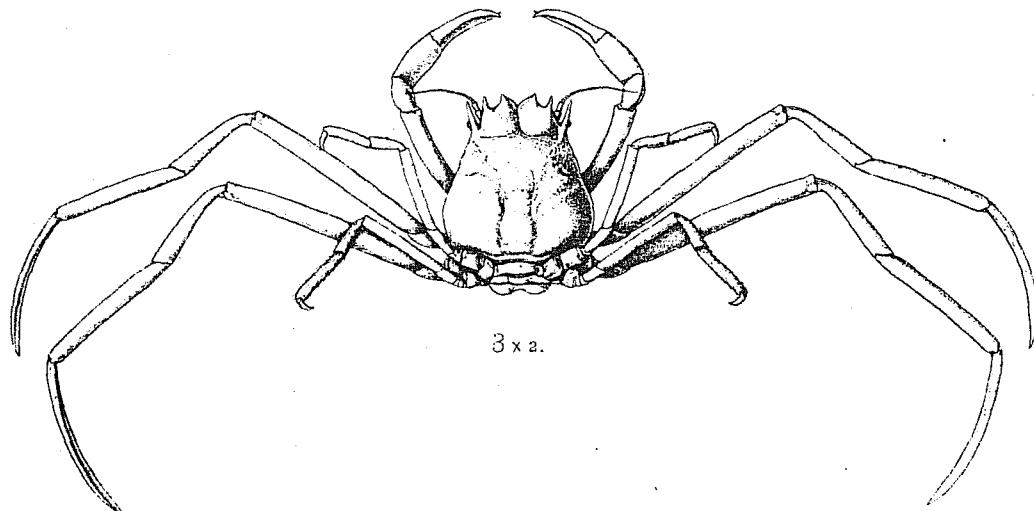
1a x3.



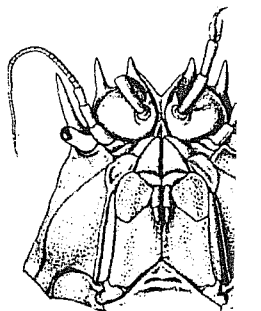
2x2.



2a x4.



3x2.



3a x4.

1. 1a. *Ethusa hirsuta*. ♂

2. 2a *Ethusa desciscens*. ♂

3. 3a. *Ethusa investigatoris*.

EXPLANATION OF PLATE.

---

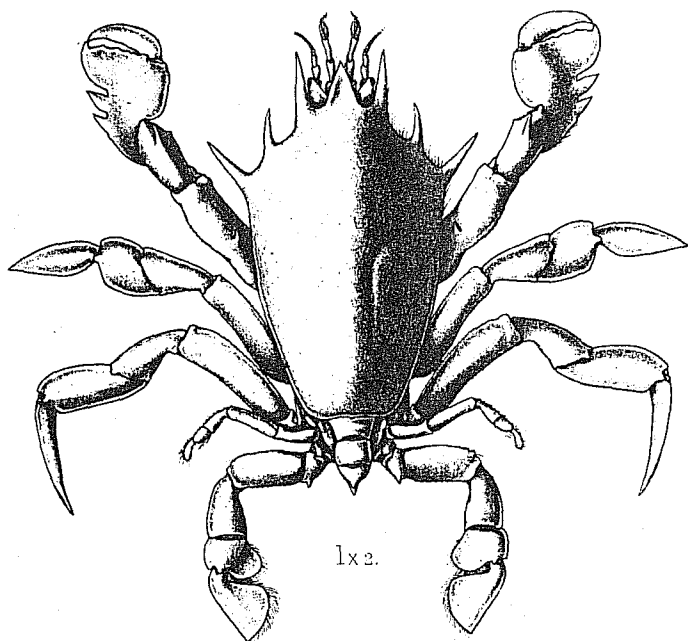
CRUSTACEA.

---

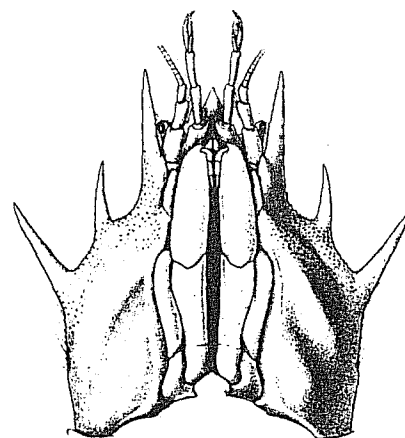
PLATE LXXIII.

*Figs. 1, 1a.*—*Lyreidus channeri*, Wood-Mason, J. A. S. B., Vol. LVI, 1887, pt. 2, p. 206; and Alcock, Investigator Deep Sea Brachyura, 1899, p. 38.

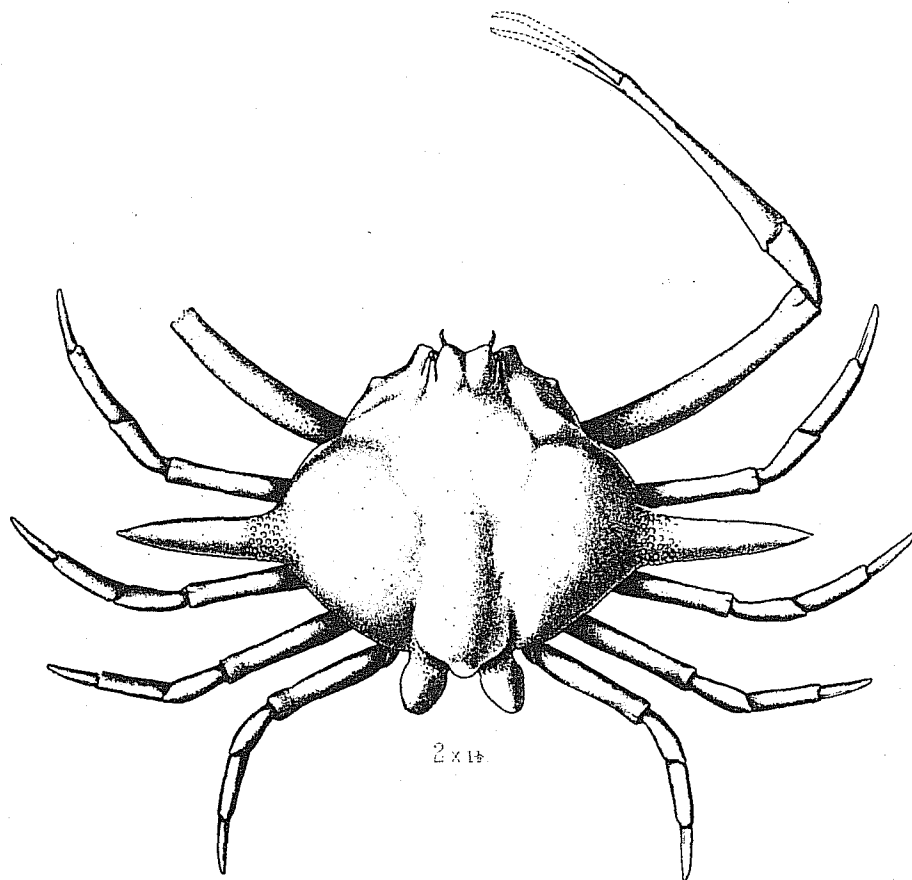
*Figs. 2, 2a, 2b.*—*Ixoides cornutus*, MacGilchrist, Ann. Mag. Nat. Hist., March, 1905, p. 255.



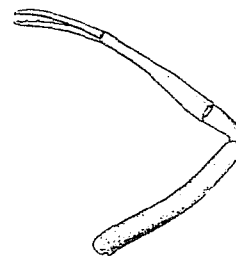
1x2.



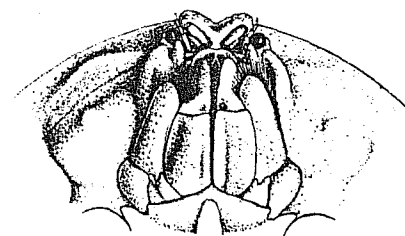
1a x3.



2x1+



2b.



2a x2.

1, 1a. *Lyreidus channeri*, ♂. 2, 2a, 2b. *Ixoides cornutus*, ♂.

EXPLANATION OF PLATE.

---

CRUSTACEA.

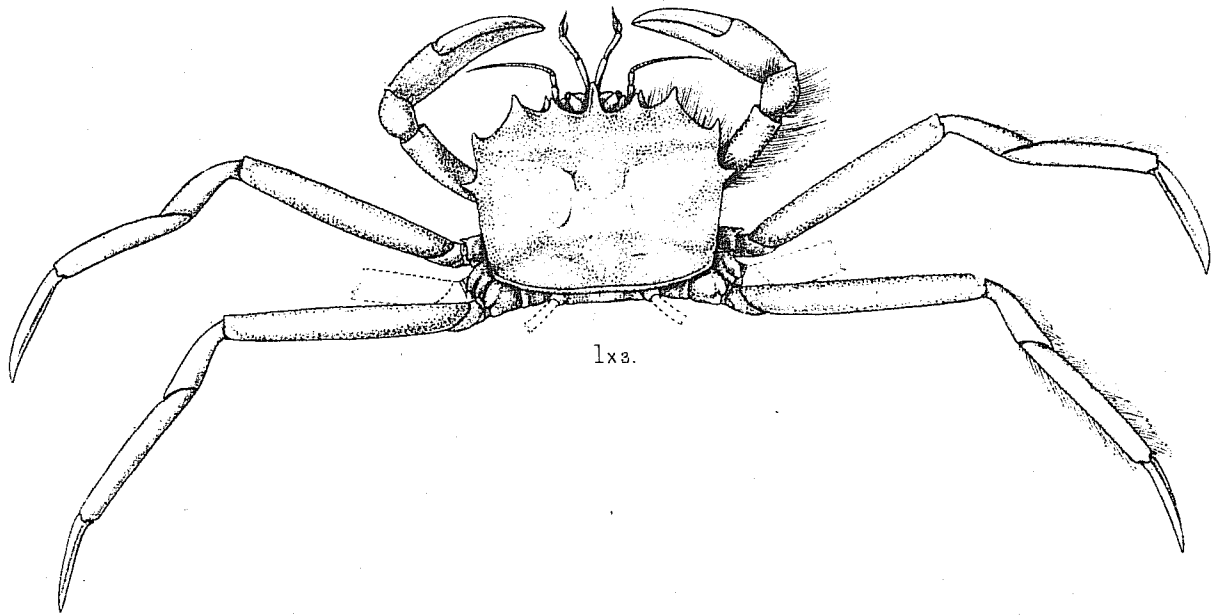
---

PLATE LXXIV.

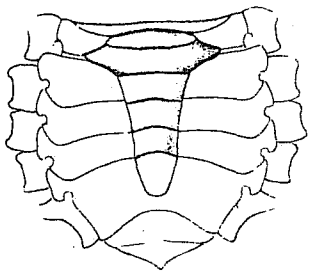
*Fig. 1.*—*Ptenoplax dentata*, MacGilchrist, Ann. Mag. Nat. Hist., March, 1905, p. 266.

*Figs. 2, 2a.*—*Ceratoplax granulosa*, MacGilchrist, *Op. cit.*, p. 263.

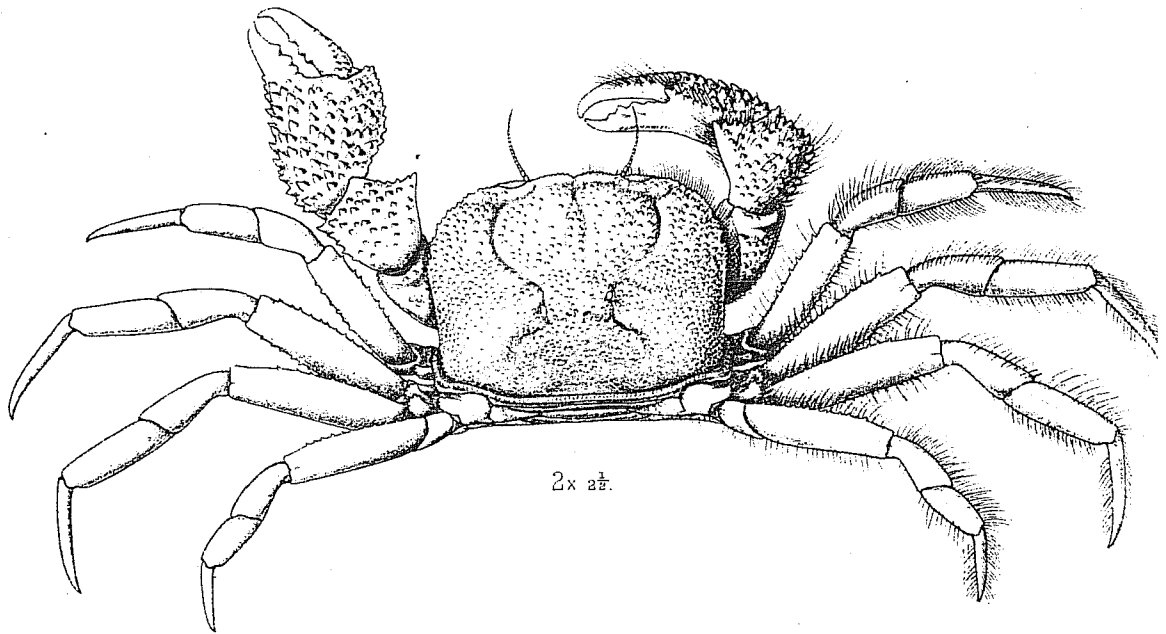
*Figs. 3, 3a.*—*Camalopsis rubida*, Alcock and Anderson, Ann. Mag. Nat. Hist., Jan., 1889, p. 13; and Alcock, Investigator Deep Sea Brachyura, 1899, p. 76, pl. iv. fig. 3.



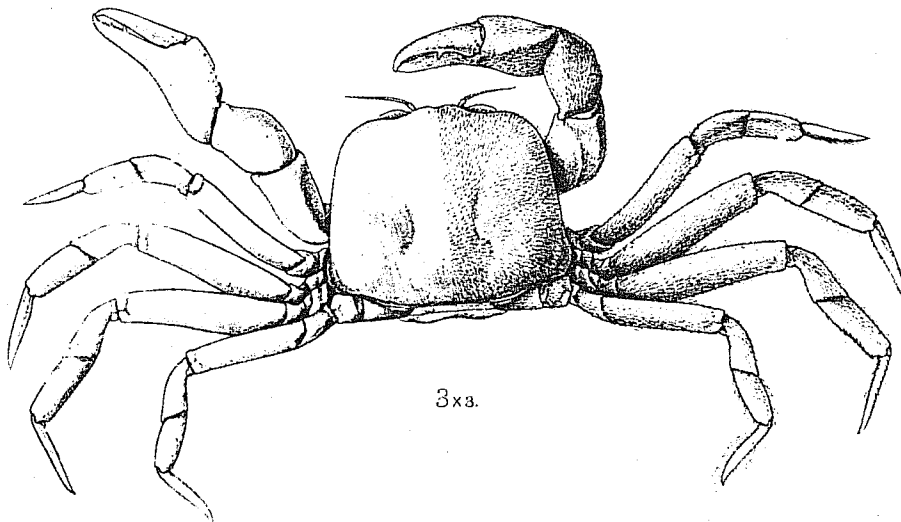
1x3.



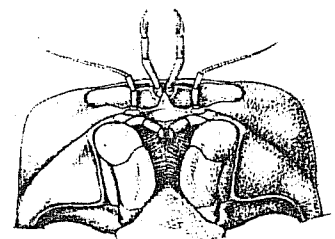
2a x3.



2x 2 1/2.



3x3.



3a x4.

1. *Ptenoplax dentata*. ♂

2. 2a. *Ceratoplax granulosa*. ♂

3. 3a. *Camatopsis rubida*. ♂

EXPLANATION OF PLATE.

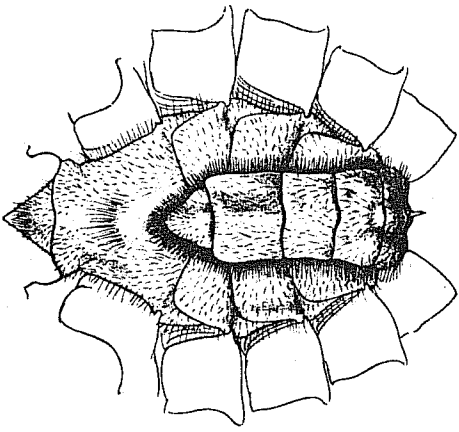
---

CRUSTACEA.

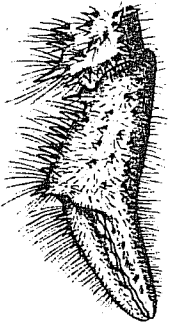
---

PLATE LXXV.

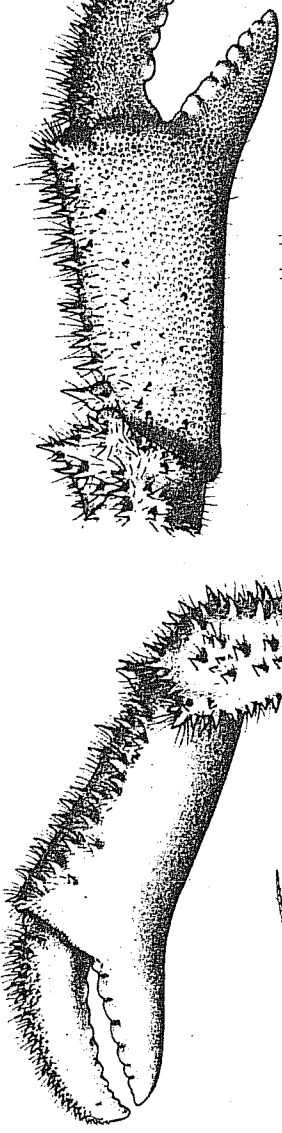
*Figs. 1, 1a, 1b, 1c.*—*Trichopeltarium ovale*, Anderson, J. A. S. B., Vol. LXV, pt. 2, 1896, p. 103; and Ill. Zool. Investigator, Crust., pl. xxv. fig. 4 (female); and Alcock, Investigator Deep Sea Brachyura, 1899, p. 57.



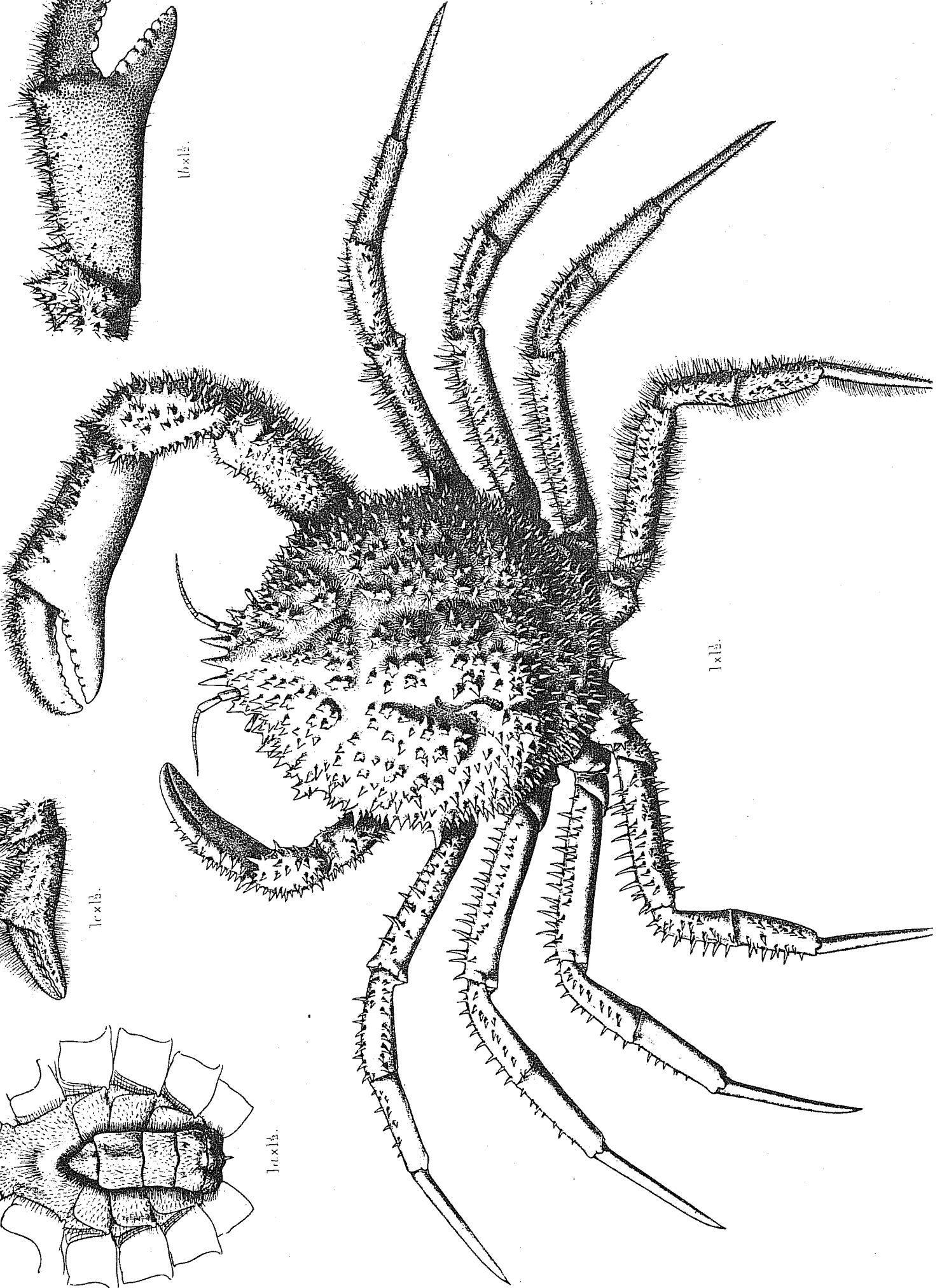
1x13.



1x13.



11x13.



1x13.



EXPLANATION OF PLATE.

CRUSTACEA.

PLATE LXXVI.

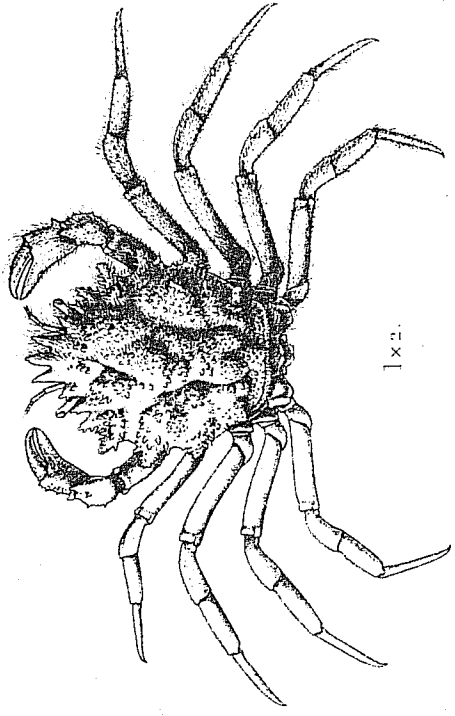
*Figs. 1, 2, 2a.*—*Trachycarcinus glaucus*, Alcock and Anderson, Ann. Mag. Nat. Hist., Jan., 1899, p. 8; and Alcock, Investigator Deep Sea Brachyura, 1899, p. 59, pl. ii. fig. 2. *Trachycarcinus*

*Fig. 3.*—*Actumnus margaroes*, MacGilchrist, Ann. Mag. Nat. Hist., March, 1905, p. 260.

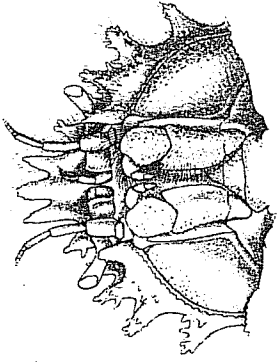
*Figs. 4, 4a.*—*Benthochascon hemingi*, Alcock and Anderson, *Op. cit.*, p. 10; and Alcock, Investigator Deep Sea Brachyura, 1899, p. 69, pl. iii. fig. 2.

ology of the R.I.M.S. Investigator.

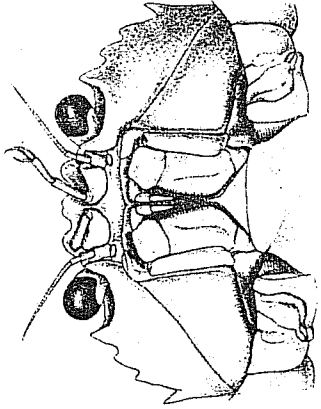
1000 2-13, 5-13



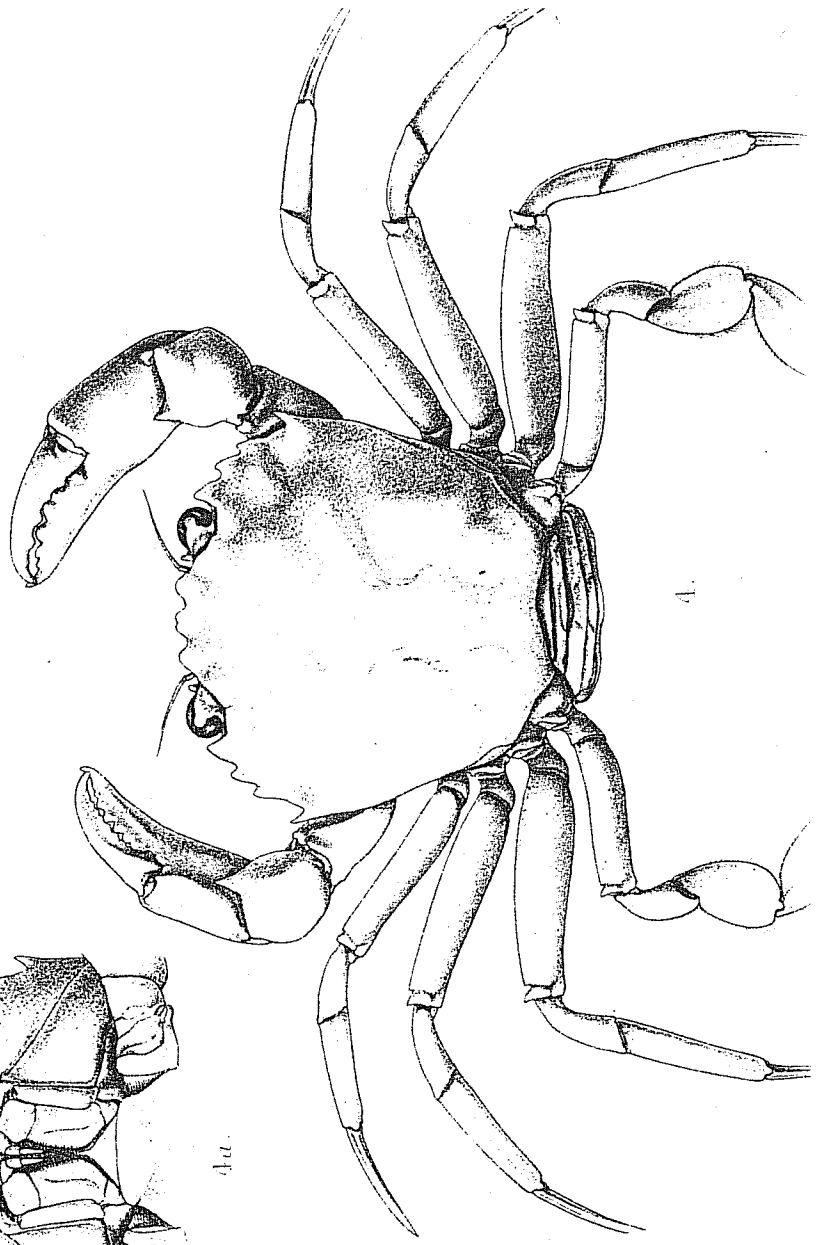
1x2.



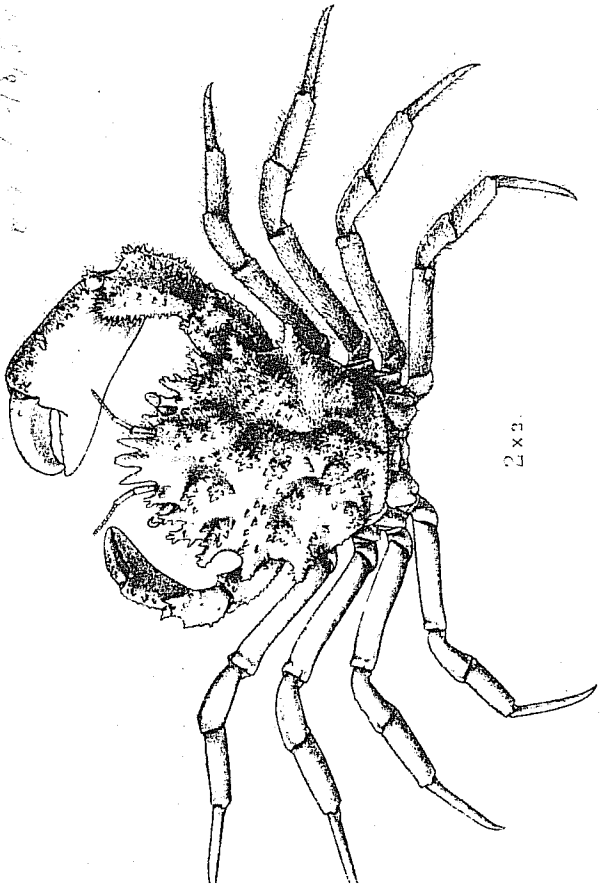
2x.



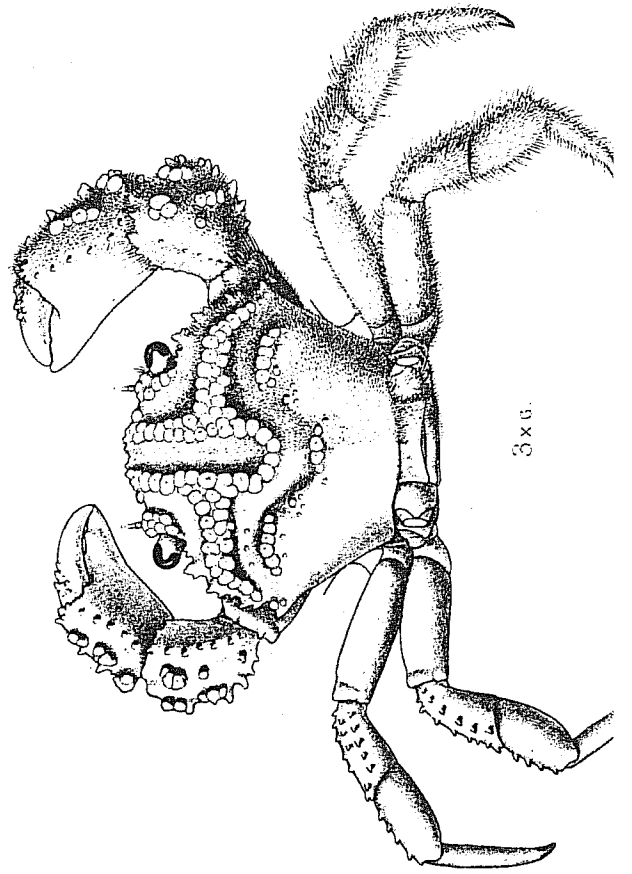
4x.



4.



2x2.



3x6.