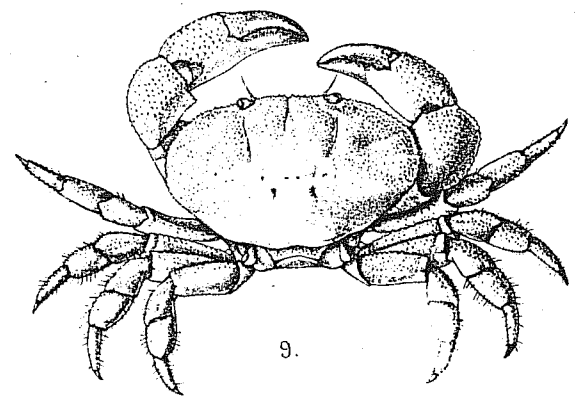
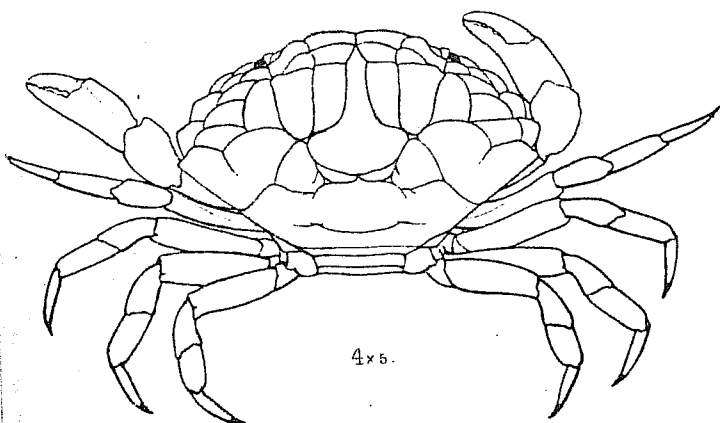
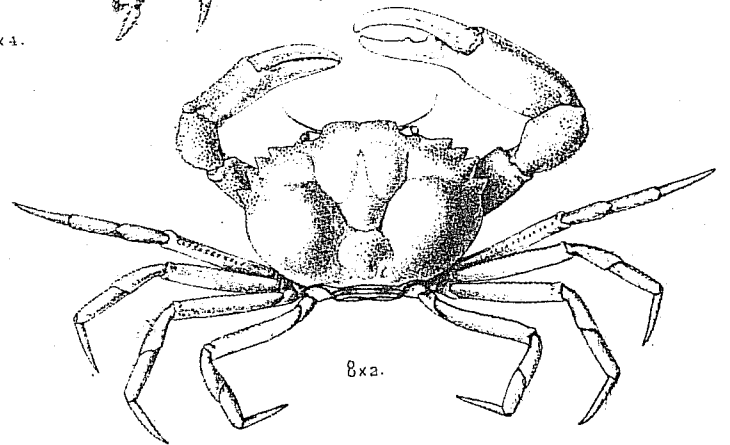
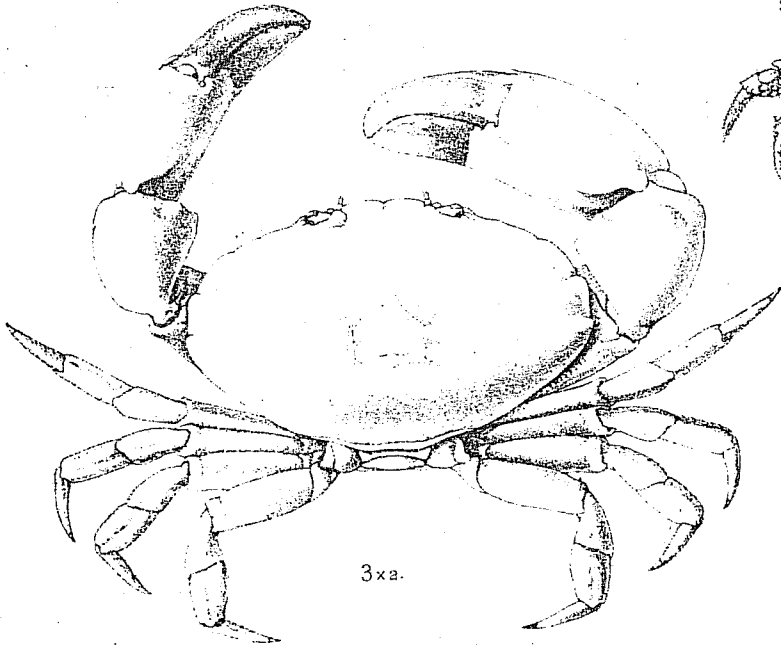
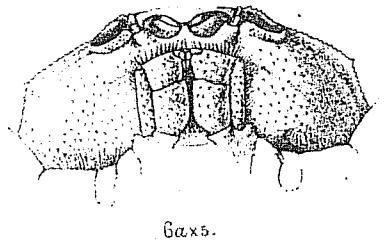
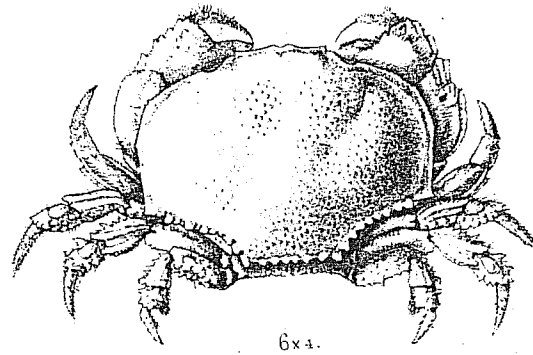
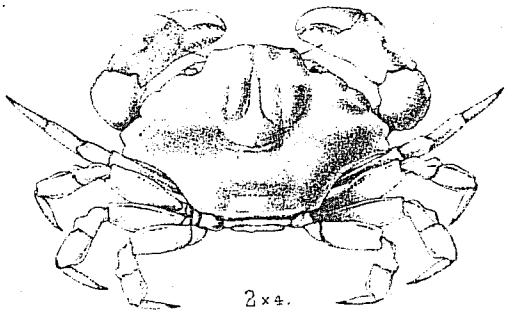
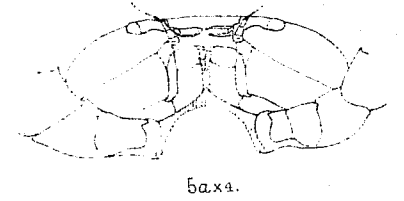
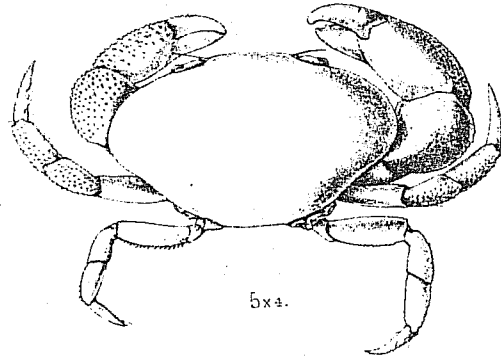
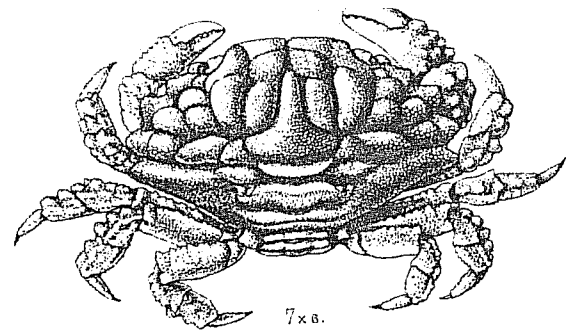
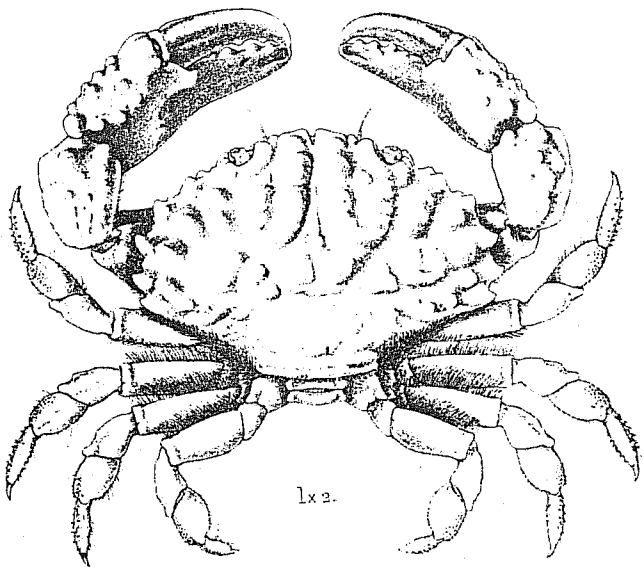


EXPLANATION OF PLATE.

CRUSTACEA.

PLATE XXXVI.

- 1.—*Leptodius euglyptus*, Alcock, Journal, Asiatic Society
Vol. LXVII, pt. 2, 1898, p. 121.
- 2.—*Carpilodes lophopus*, Alcock, *tom. cit.*, p. 84.
- 3.—*Lioxantho tumidus*, Alcock, *tom. cit.*, p. 91.
- 4.—*Carpilodes pediger*, Alcock, *tom. cit.*, p. 83.
- 5.—*Liomera sodalis*, Alcock, *tom. cit.*, p. 88.
- 6.—*Lophactæa corallina*, Alcock, *tom. cit.*, p. 102.
- 7.—*Carpilodes cariosus*, Alcock, *tom. cit.*, p. 86.
- 8.—*Orphnoxanthus microps*, Alcock, *tom. cit.*, p. 128.
- 9.—*Lioxantho asperatus*, Alcock, *tom. cit.*, p. 92.



1. *Leptodius euglyptus*. A.A. ♂. 2. *Carpilodes lophopus*. A.A. ♀. 3. *Lioxantho tumidus*. A.A. ♂. 4. *Carpilodes pediger*. ♀. A.A. 5. *Liomera sodalis*. A.A. ♀.
6. *Lophactæa corallina*. A.A. ♀. 7. *Carpilodes cariosus*. A.A. ♀. 8. *Orphnoxanthus microps*. A.A. ♂. 9. *Lioxantho. asperatus*. Alc. ♂.

EXPLANATION OF PLATE.

CRUSTACEA.

PLATE XXXVII.

Figs. 1, 1a.—*Hoploxanthus Hextii*, Alcock, Journal, Asiatic Society of Bengal, Vol. LXVII, pt. 2, 1898, p. 126.

Fig. 2.—*Actæa nodulosa*, var. *bullifera*, Alcock, *tom. cit.*, p. 149.

Fig. 3.—*Actæa echinus*, Alcock, *tom. cit.*, p. 149.

Fig. 4.—*Actæa flosculata*, Alcock, *tom. cit.*, p. 151.

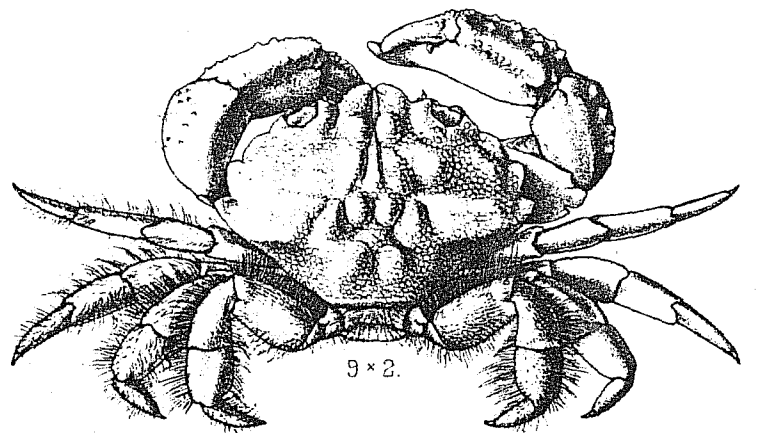
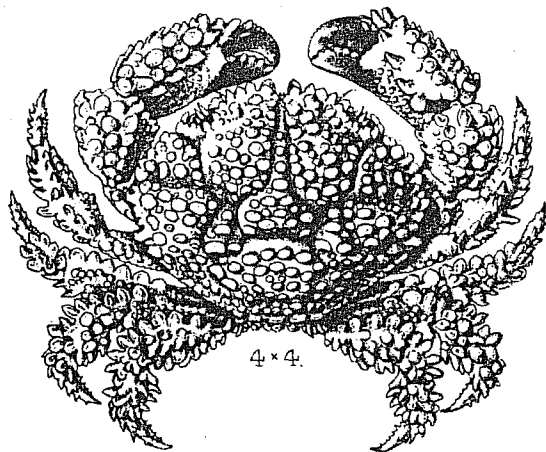
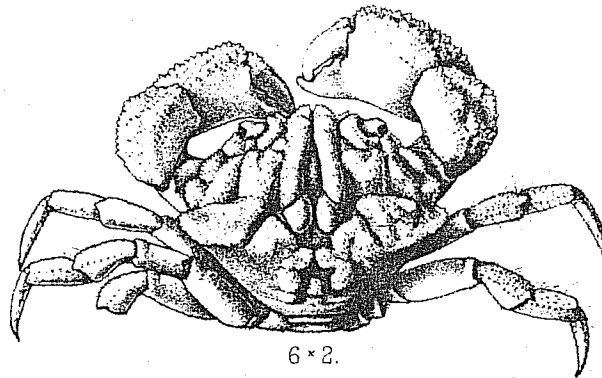
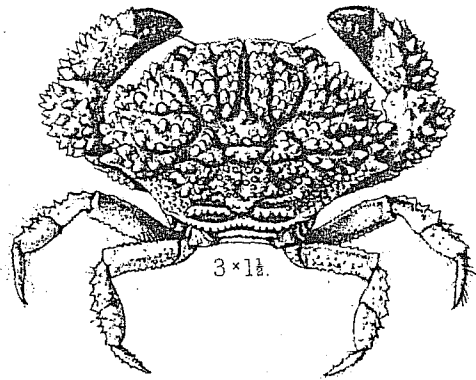
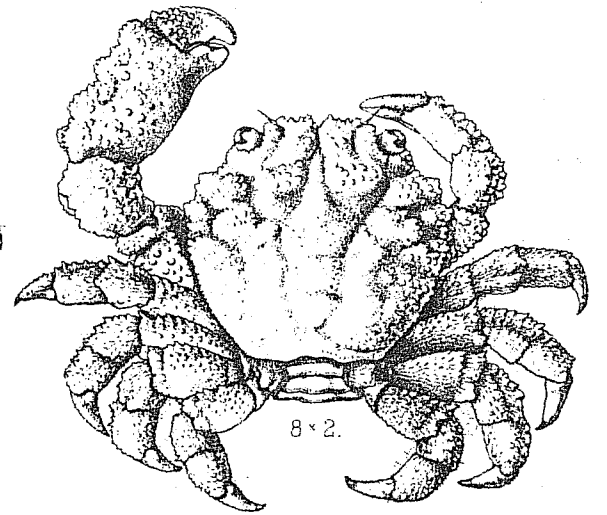
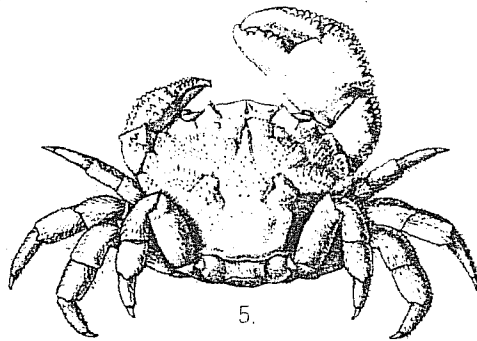
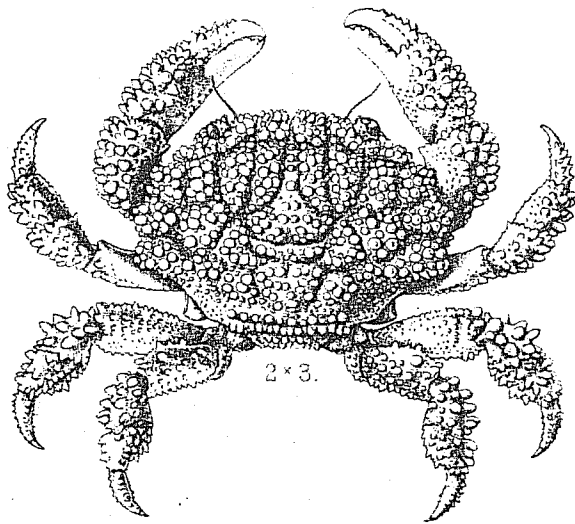
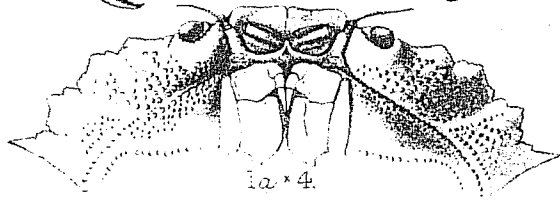
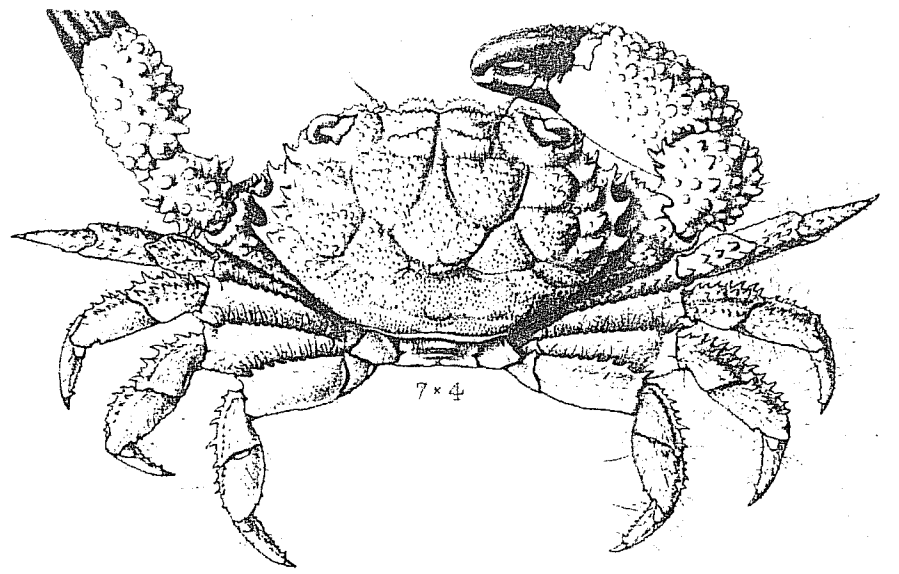
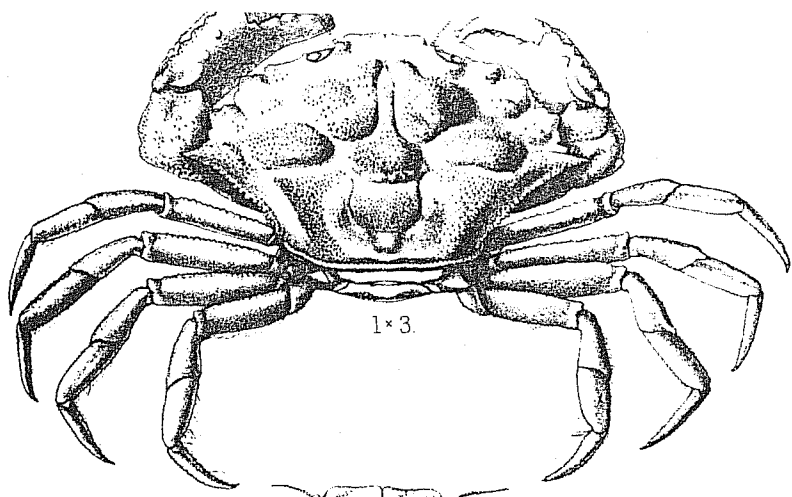
Fig. 5.—*Actumnus fissifrons*, Alcock, *tom. cit.*, p. 204.

Fig. 6.—*Actumnus arbutum*, Alcock, *tom. cit.*, p. 205.

Fig. 7.—*Chlorodopsis Wood-Masoni*, Alcock, *tom. cit.*, p. 170.

Fig. 8.—*Cymo quadrilobatus*, Miers, Zoology of H. M. S. "Alert," p. 533: Alcock, *tom. cit.*, p. 175.

Fig. 9.—*Actumnus tessellatus*, Alcock, *tom. cit.*, p. 205.



1. *Hoploxanthus hextii*, ♀. A.A. 2. *Actaea nodulosa* var. *bullifera*, ♂. A.A. 3. *Actaea echinus*, ♂. A.A.
4. *Actaea flosculata*, A.A. ♂. 5. *Actumnus fissifrons*, A.A. ♀. 6. *Actumnus arbutum*, Alc. ♂.
7. *Chlorodopsis wood-masoni*, A.A. 8. *Cymo quadrilobatus*, ♀. Miers. 9. *Actumnus tessellatus*, A.A. ♂.

EXPLANATION OF PLATE.

CRUSTACEA.

PLATE XXXVIII.

Fig. 1.—*Quadrella boopsis*, Alcock, Journal, Asiatic Society of I., Vol. LXVII, pt. 2, 1898, p. 227.

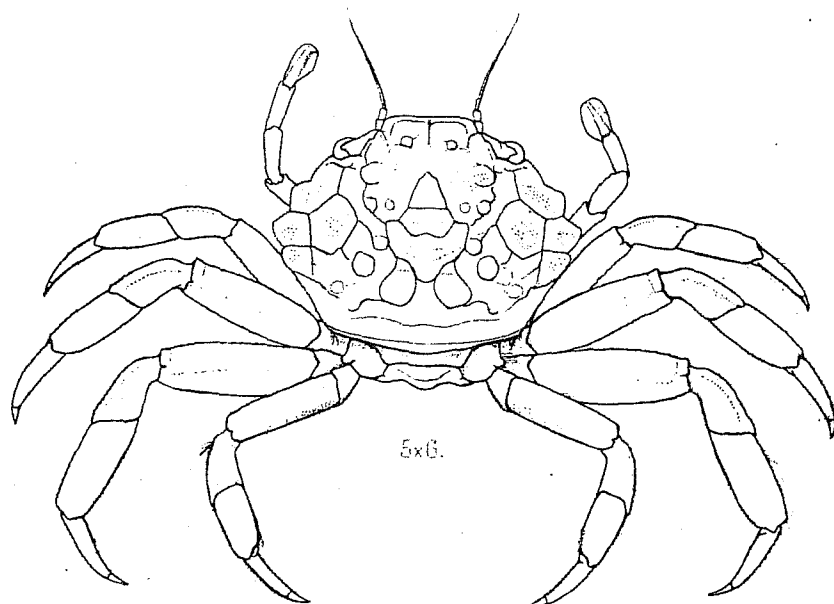
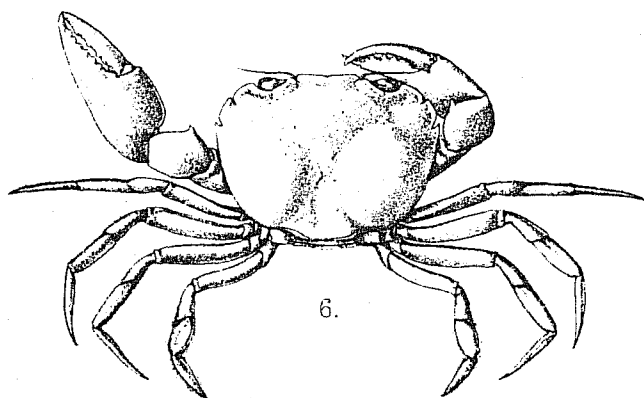
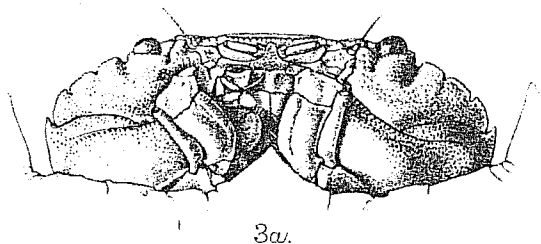
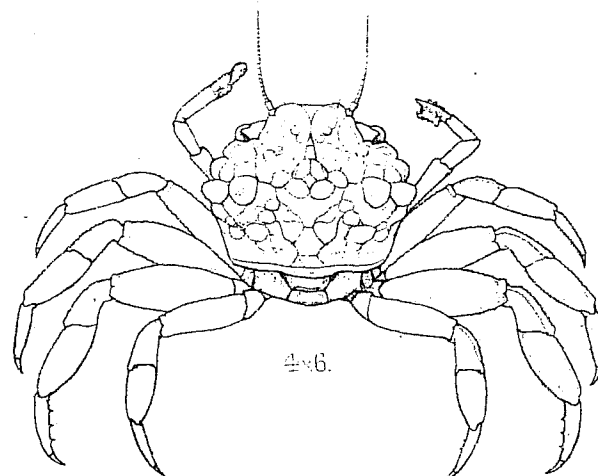
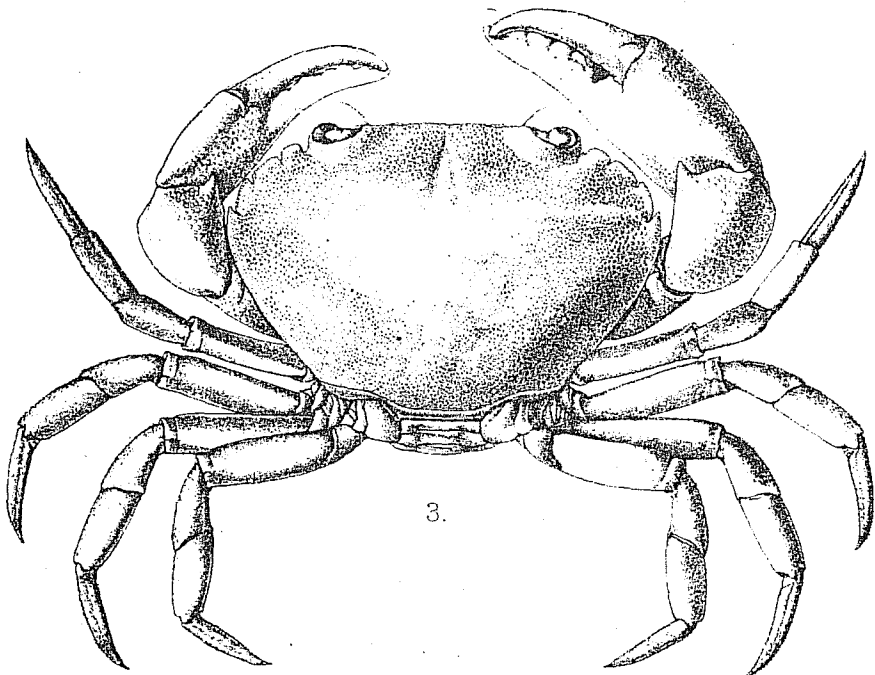
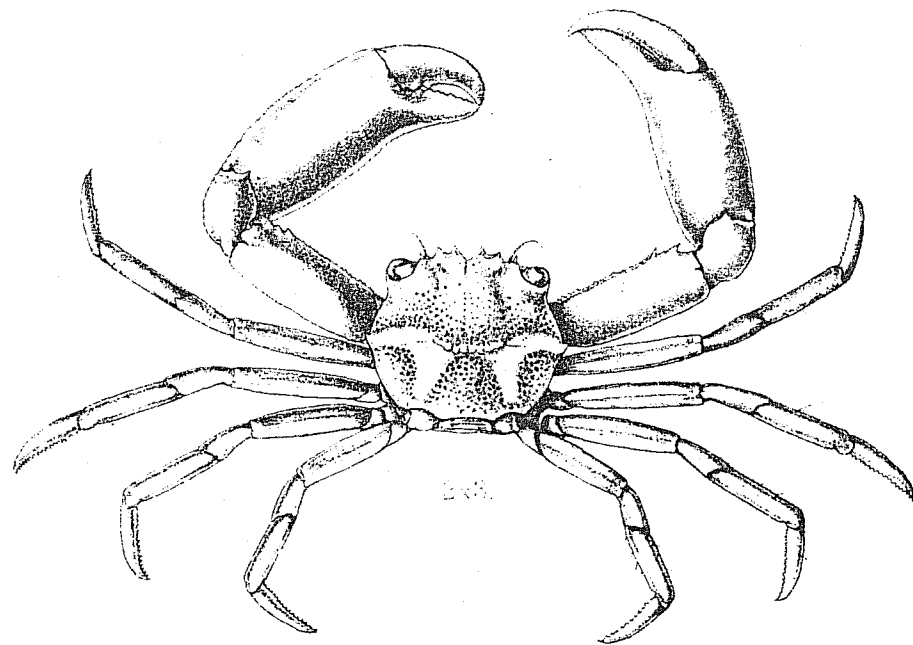
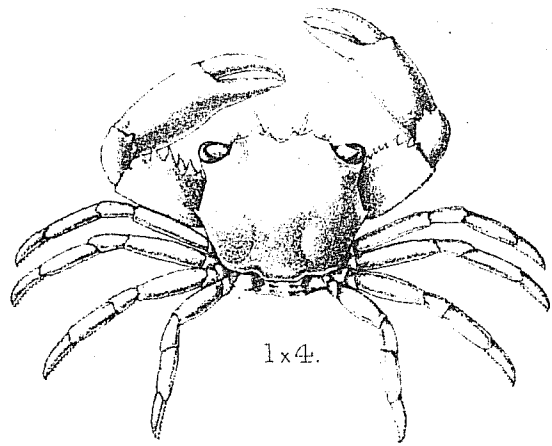
Fig. 2.—*Quadrella coronata*, var. *maculosa*, Alcock, *tom. cit.*, 5.

Fig. 3.—*Baptozius vinosus*, Milne Edwards, Histoire Naturelle rustacés, I., p. 422: Alcock, *tom. cit.*, p. 189.

Fig. 4.—*Melia cæstifer*, Alcock, *tom. cit.*, p. 231.

Fig. 5.—*Melia pugil*, Alcock, *tom. cit.*, p. 231.

Fig. 6.—*Nectopanope rhodobaphes*, Wood-Mason, Annals and Magazine of Natural History, March 1891, p. 261: Alcock, *tom. cit.*, 13.



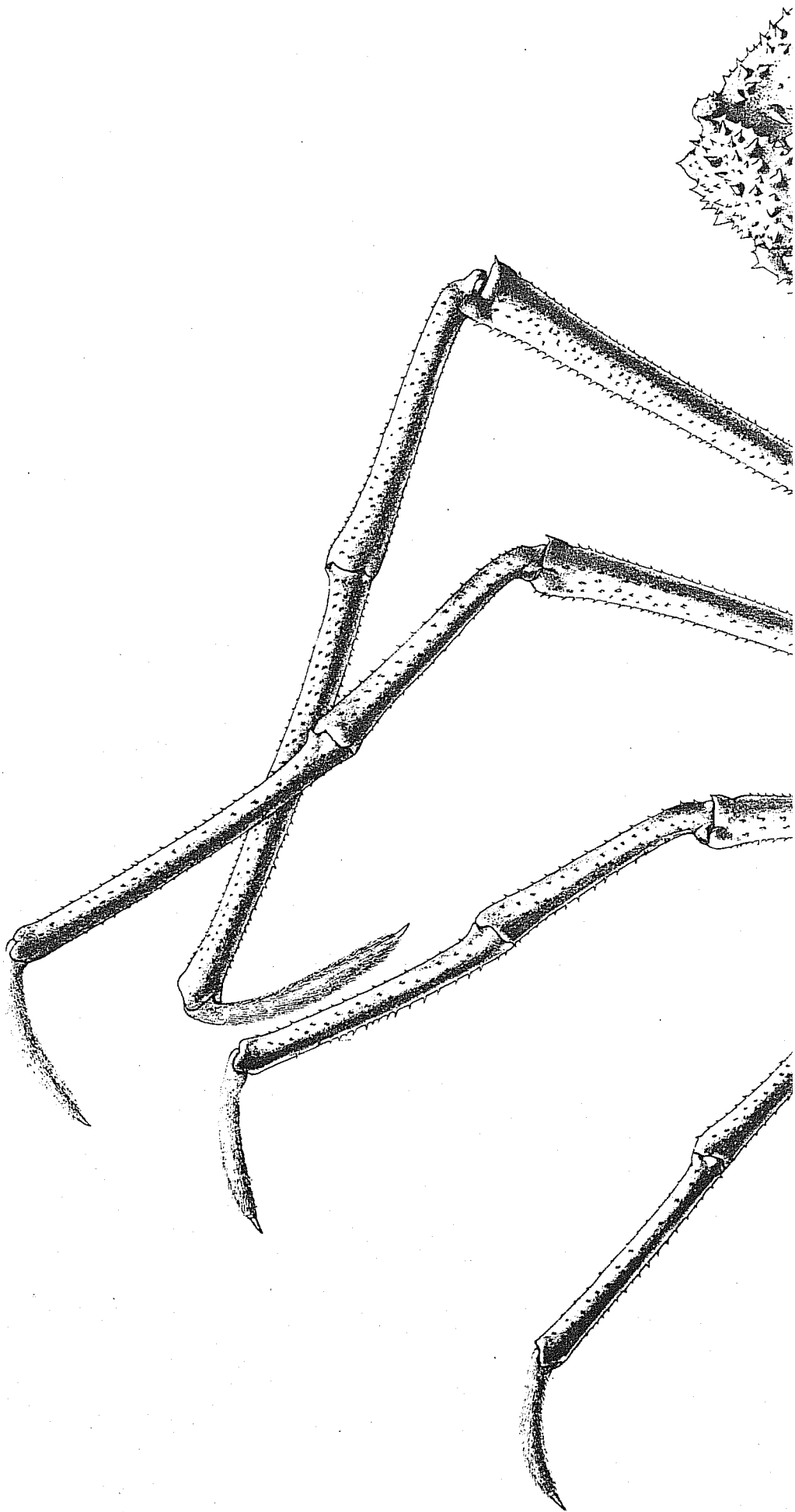
1. *Quadrella boopsis*, ♀ A.A. 2. *Quadrella coronata* var. *maculosa*, ♂ A.A. 3. *Baptozius vinosus*, Edw. ♀
4. *Melia caestifer*, A.A. ♂ 5. *Melia pugil*, A.A. ♀ 6. *Nectopanope rhodobaphes*, W.M. ♀

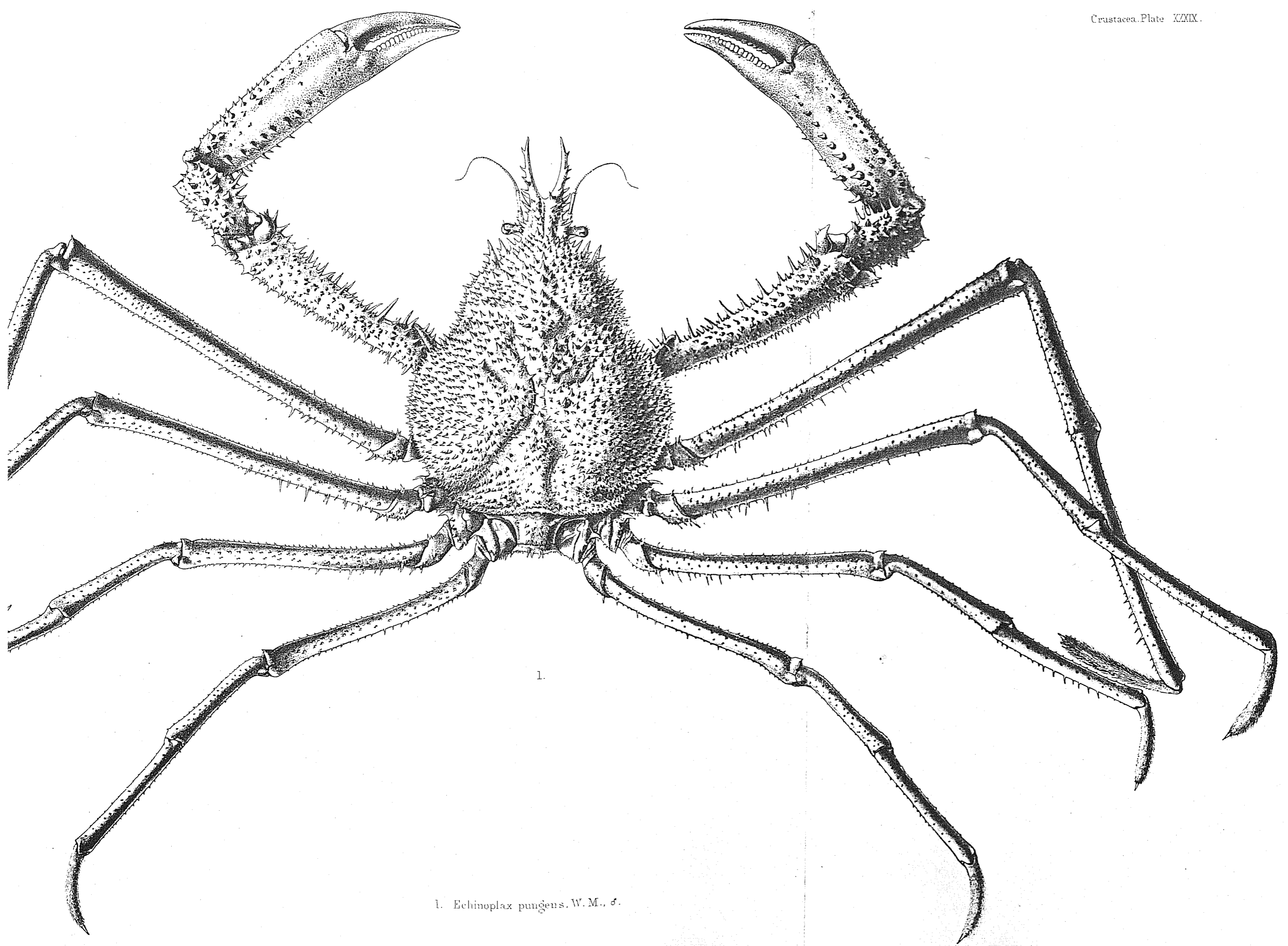
EXPLANATION OF PLATE.

—+—
CRUSTACEA.
—+—

PLATE XXXIX.

Echinoplax pungens, Wood-Mason. Male, natural size. Wood-Mason, Annals and Magazine of Natural History, March 1891, p. 259. Alcock, Journal, Asiatic Society of Bengal, Vol. LXIV, pt. 2, 1895, p. 179: Illustrations of the Zoology of the Investigator, Crustacea, plate xvii, fig. 1 (adult female): and "Investigator" Deep Sea Brachyura, p. 43.





1.

1. *Echinoplax pungens*. W. M., ♂.

EXPLANATION OF PLATE.

CRUSTACEA.

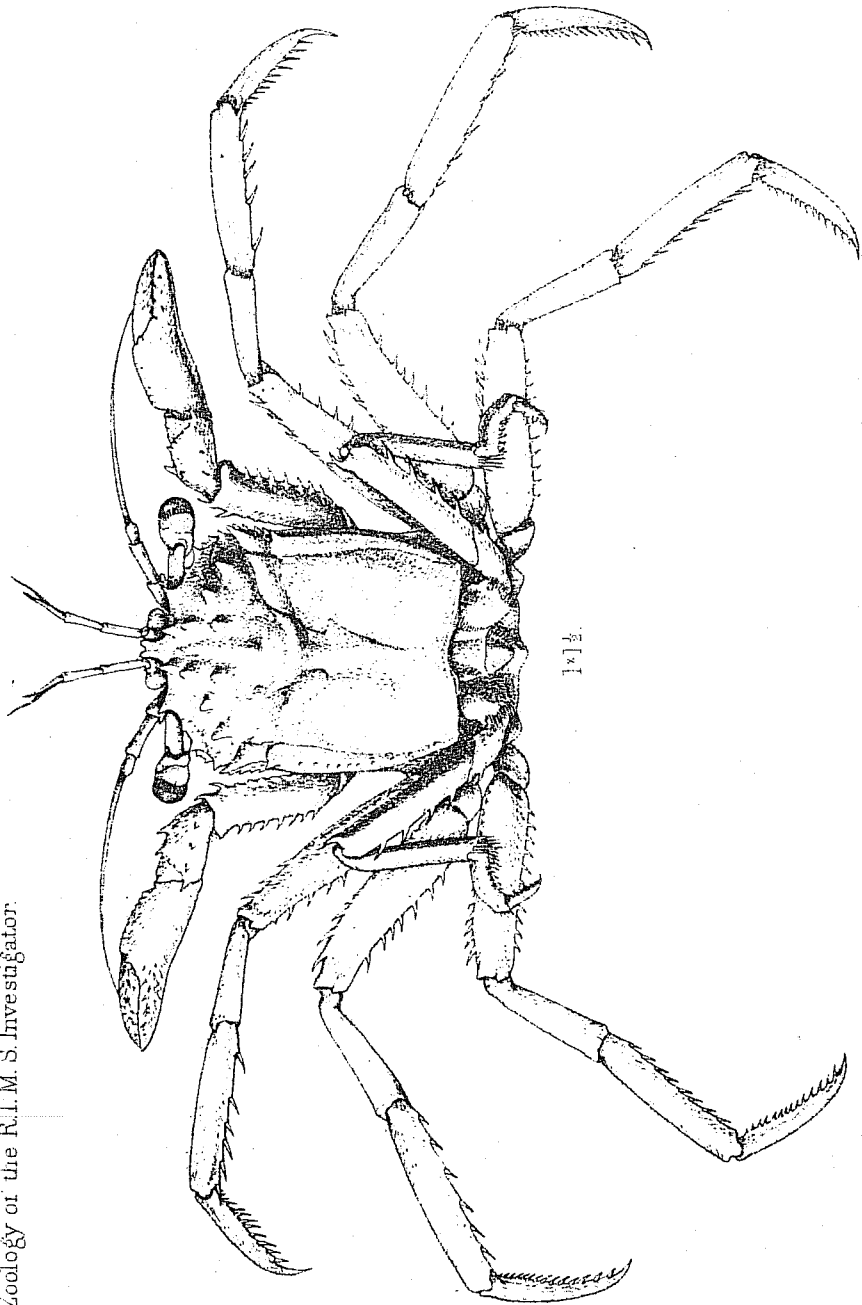
PLATE XL.

1.—*Homola andamanica*, Alcock, An Account of the
r Deep Sea Brachyura, p. 7.

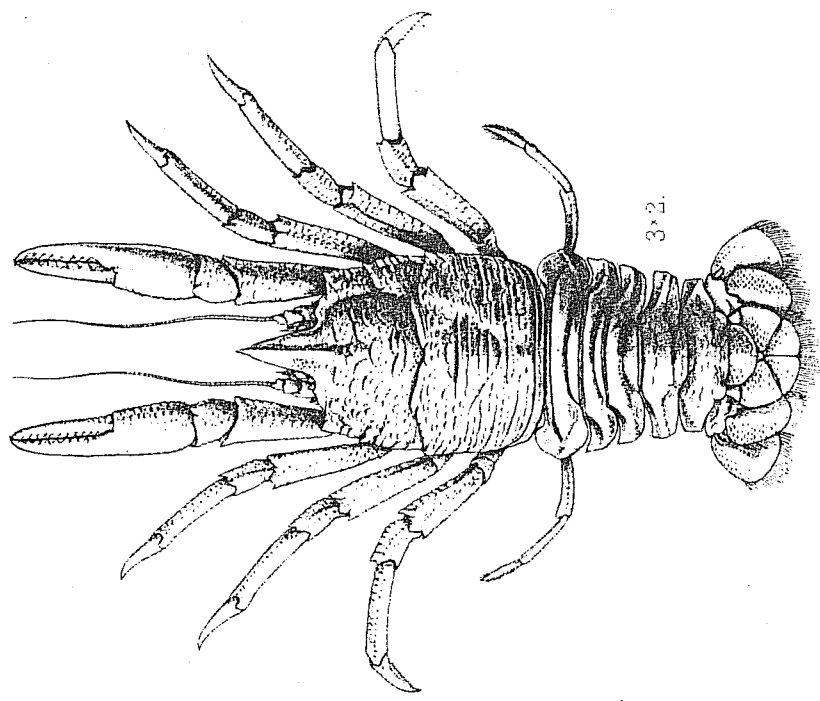
2.—*Mursia aspera*, Alcock, *op. cit.*, p. 24.

3.—*Munidopsis Moresbyi*, Alcock and Anderson, Annals
ne of Natural History, January, 1899, p. 22.

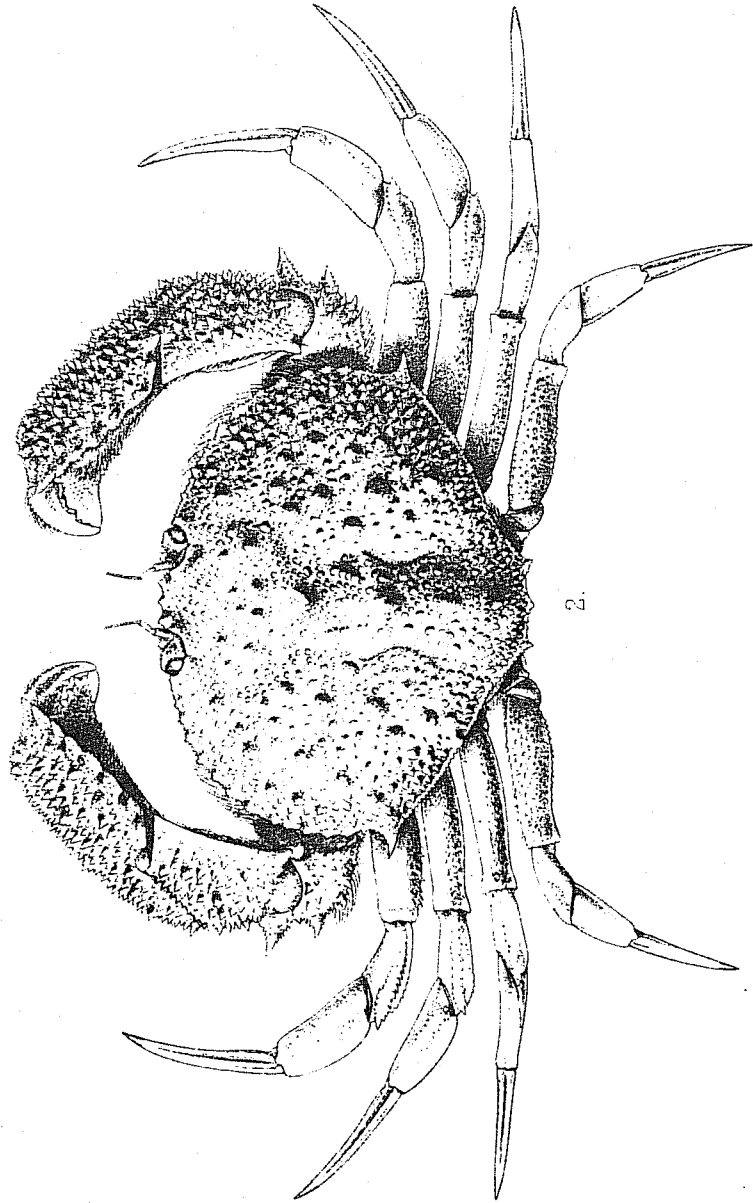
4.—*Munidopsis rosacea*, A. Milne Edwards: Alcock and
om. cit., p. 19.



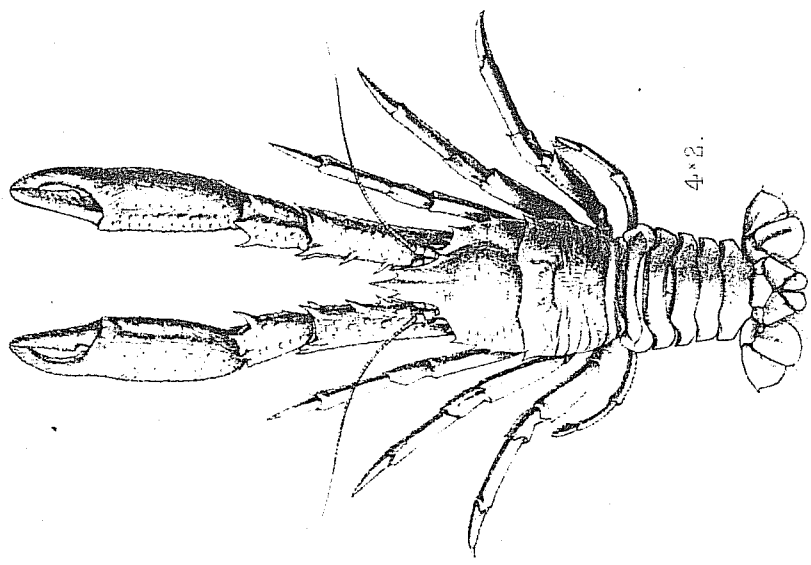
1. 14.



3. 2.



2.



4. 2.

1. *Homola andamanica*. 2. *Mursia aspera*. 3. *Munidopsis more sbyi*. 4. *Munidopsis rosacea*.

EXPLANATION OF PLATE.

CRUSTACEA.

PLATE XLI.

Figs. 1, 1a, 1b.—*Parapeneus investigatoris*, Anderson, Annals Magazine of Natural History, April 1899, p. 279.

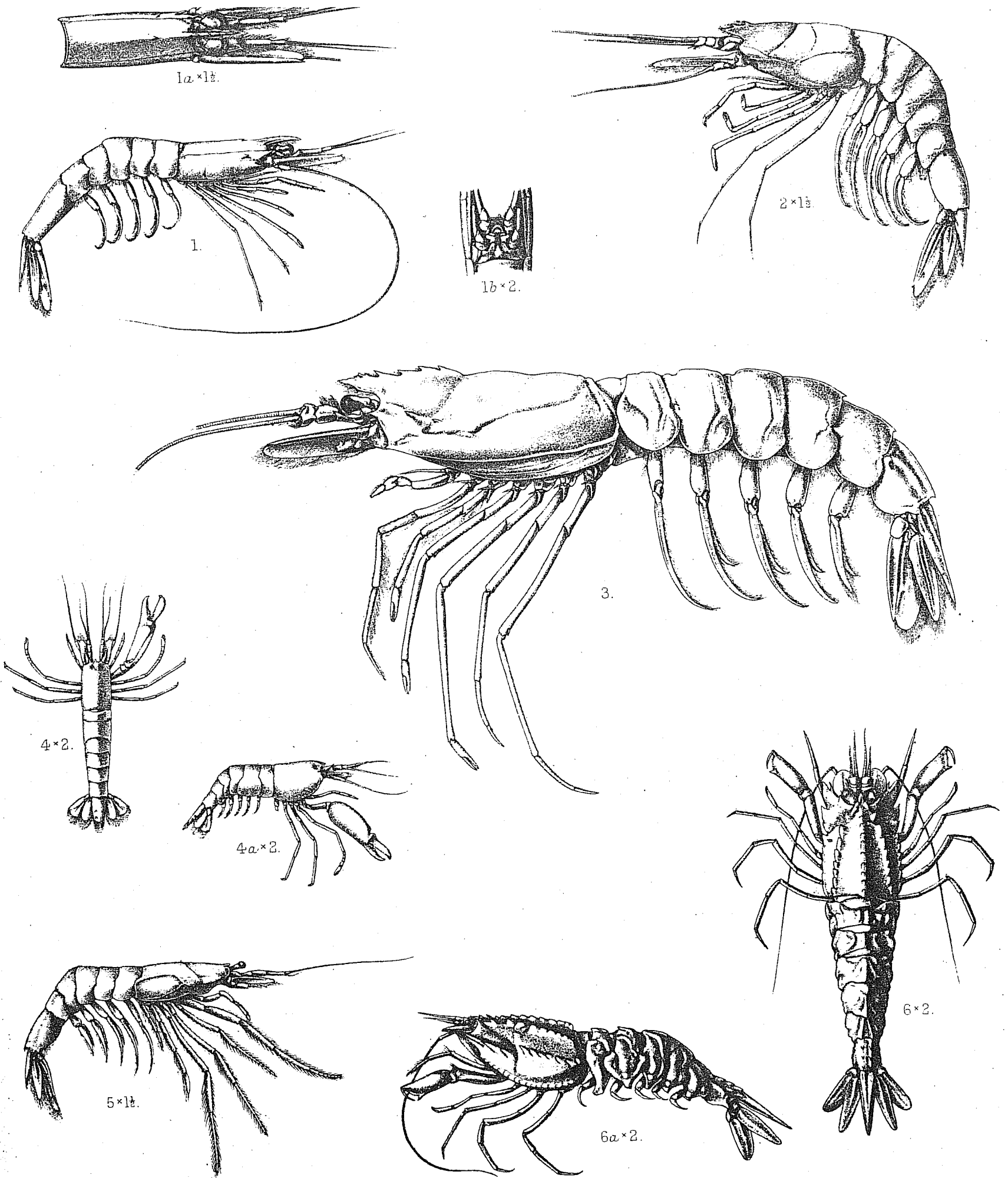
Fig. 2.—*Benthesicymus investigatoris*, Anderson, *tom. cit.*, p. 282.

Fig. 3.—*Haliporus taprobanensis*, Anderson, *tom. cit.*, p. 280.

Figs. 4, 4a.—*Alpheus Shearmeri*, Anderson, *tom. cit.*, p. 283.

Fig. 5.—*Sergestes rubroguttatus*, Wood-Mason, Annals and Magazine of Natural History, November, 1891, p. 354.

Figs. 6, 6a.—*Pontocaris media*, Alcock, Annals and Magazine of Natural History, April, 1899, p. 282.



1. *Parapeneus investigatoris*. 2. *Benthescymus investigatoris*. 3. *Haliporus taprobanensis*.
 4. *Alpheus shearmeri*. 5. *Sergestes rubroguttatus*. 6. *Pantocaris media*.

Photo-etching, Survey of India Offices, Calcutta, July, 1899.

EXPLANATION OF PLATE.

CRUSTACEA.

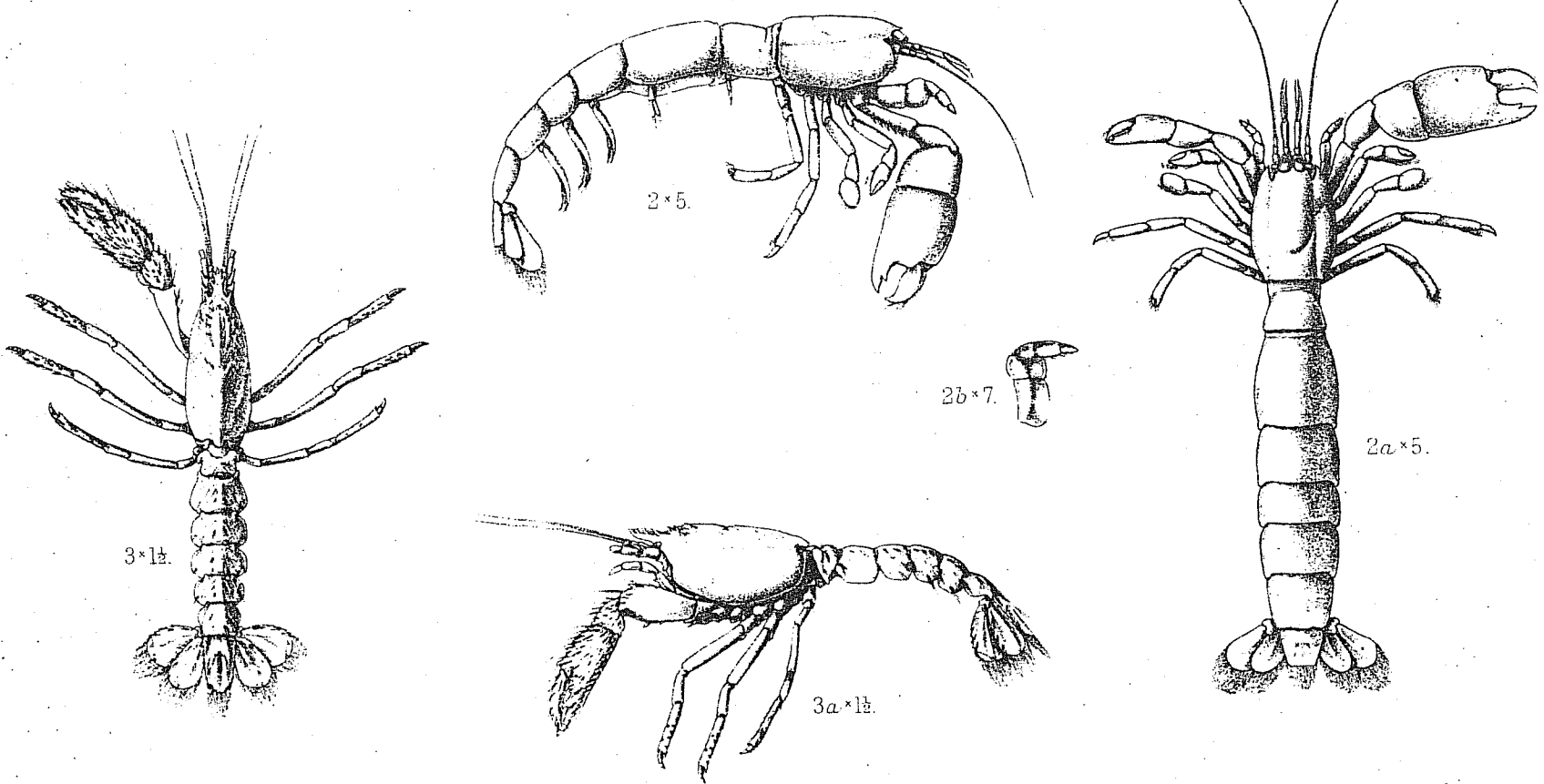
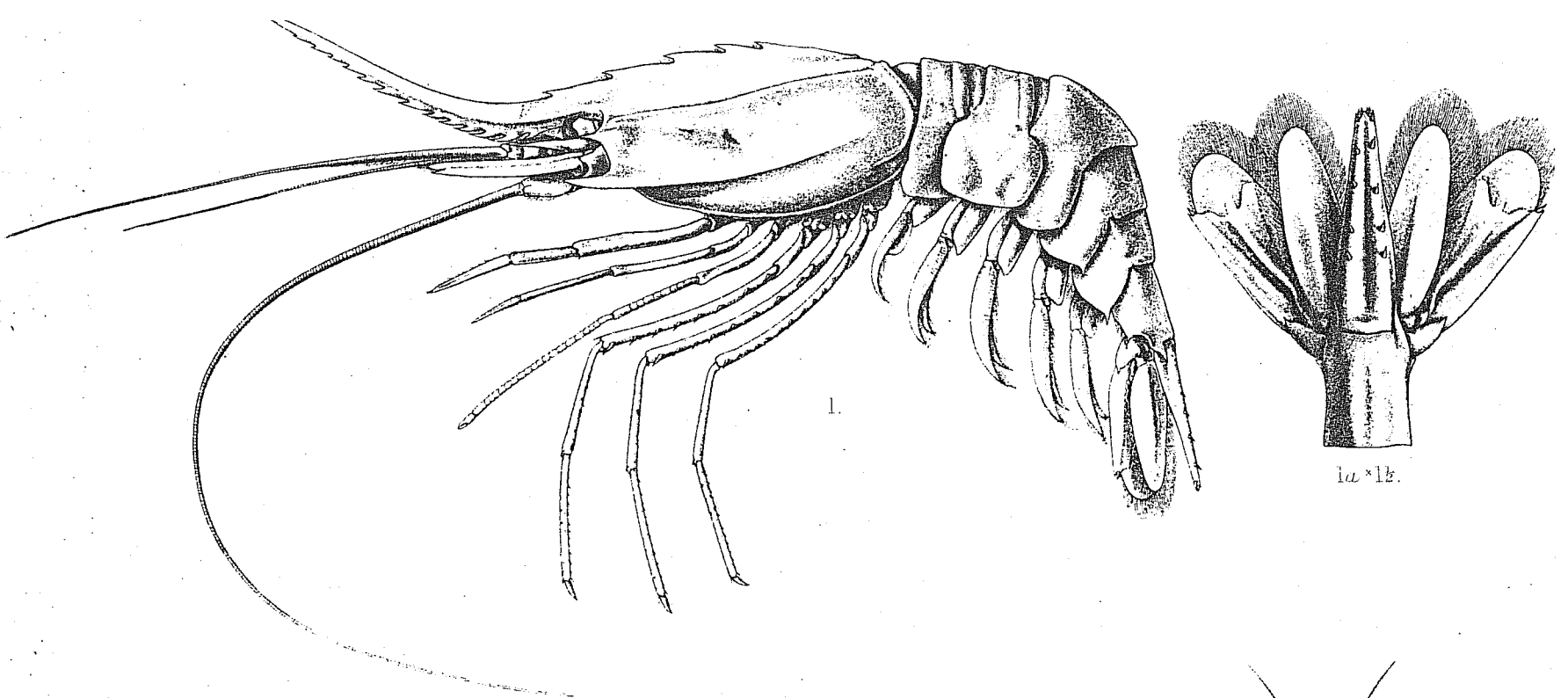
PLATE XLII.

.—*Heterocarpus laevigatus*, Spence Bate, Challenger
tacea, p. 636, pl. cxii., fig. 3: Anderson, Annals and
atural History, April 1899, p. 285.

a, *2b*.—*Callianassa lignicola*, Anderson, Annals
Natural History, April 1899, p. 288.

v.—*Calastacus felix*, Anderson, *tom. cit.*, p. 287.

.—*Richardina spongicola*, Alcock and Anderson,
azine of Natural History, April, 1899, p. 291.



1. *Heterocarpus laevigatus*. 2. *Callianassa lignicola*. 3. *Calastacus felix*. 4. *Richardina spongicola*.

EXPLANATION OF PLATE.

CRUSTACEA.

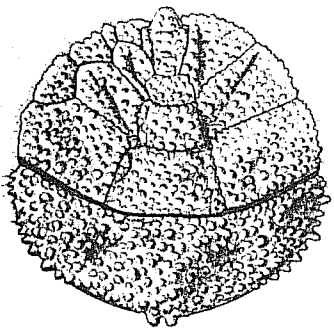
PLATE XLIII.

Figs. 1, 1a.—*Paralomis investigatoris*, Alcock and Anderson,
Is and Magazine of Natural History, January, 1899, p. 17.

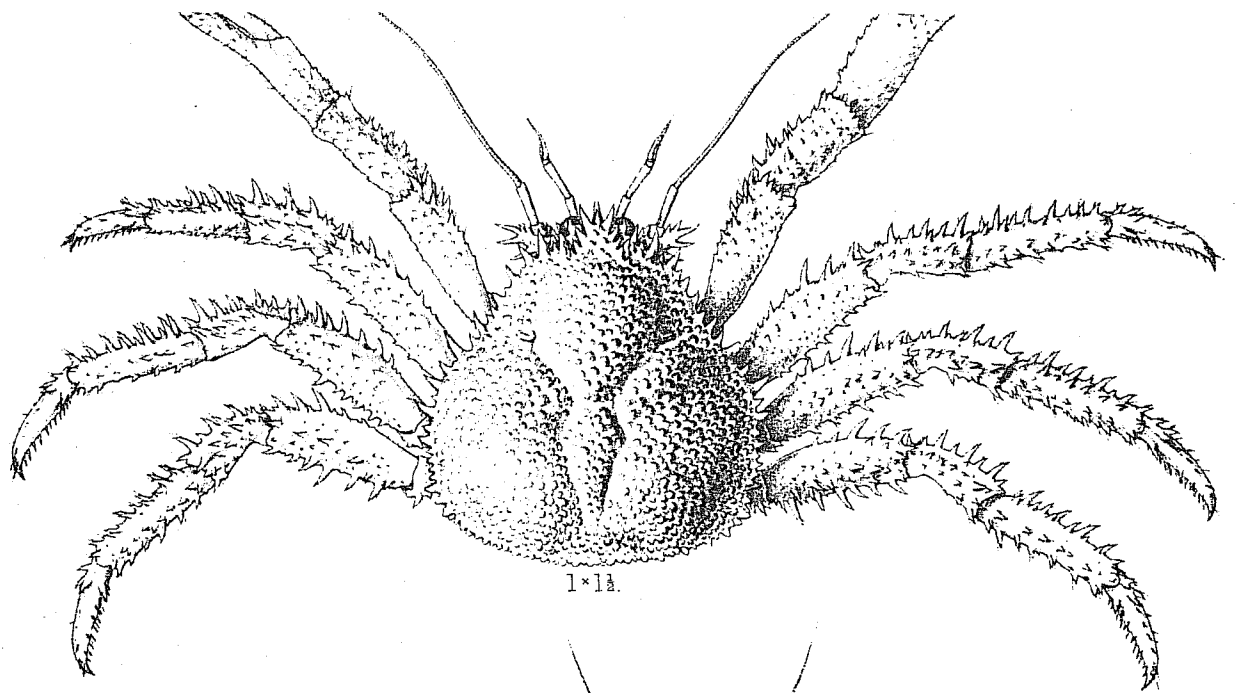
Figs. 2, 2a.—*Paralomis indica*, Alcock and Anderson, *tom. cit.*,

Fig. 3.—*Munida comorina*, Alcock and Anderson, *tom. cit.*,

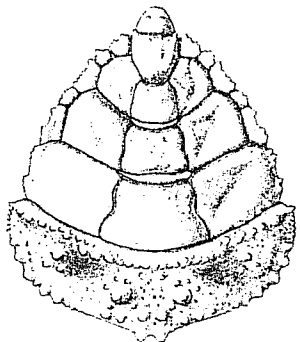
Figs. 4, 4a, 4b.—*Fylocheles Miersi*, Alcock and Anderson,
it., p. 14.



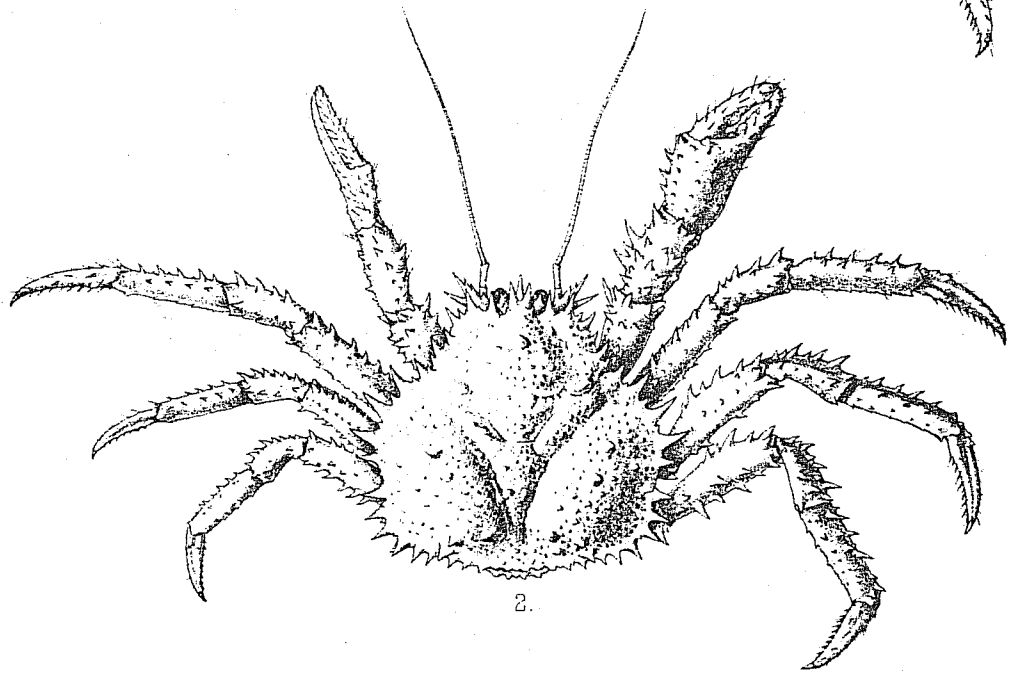
1a × 2.



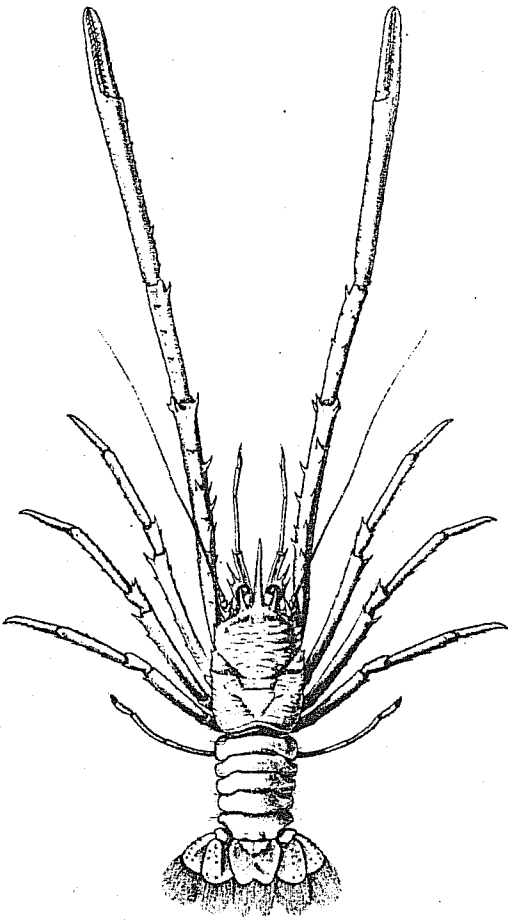
1 × 1/2.



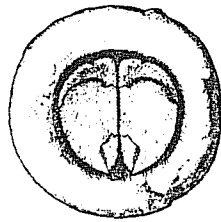
2a × 1/2.



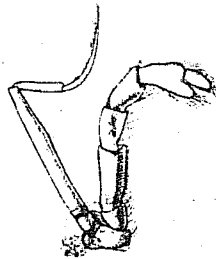
2.



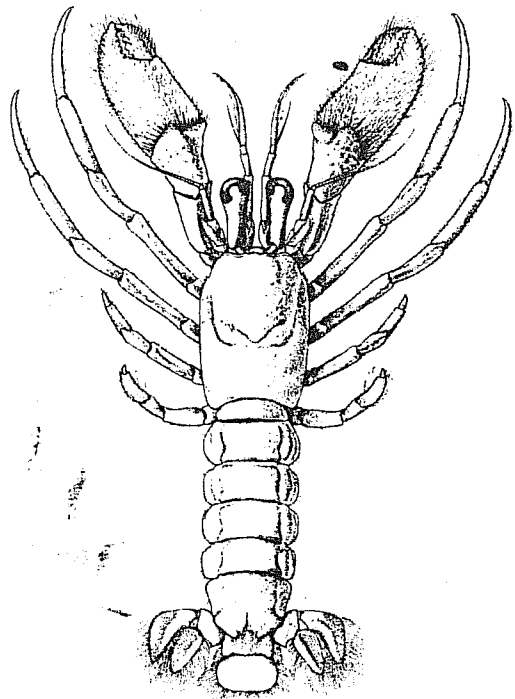
3 × 3.



4a × 2.



4b × 4.



4 × 2.

1. *Paralomis investigatoris*. 2. *Paralomis indica*. 3. *Munida comorina*. 4. *Pylocheles miersi*.

EXPLANATION OF PLATE.

—+—
CRUSTACEA.
—+—

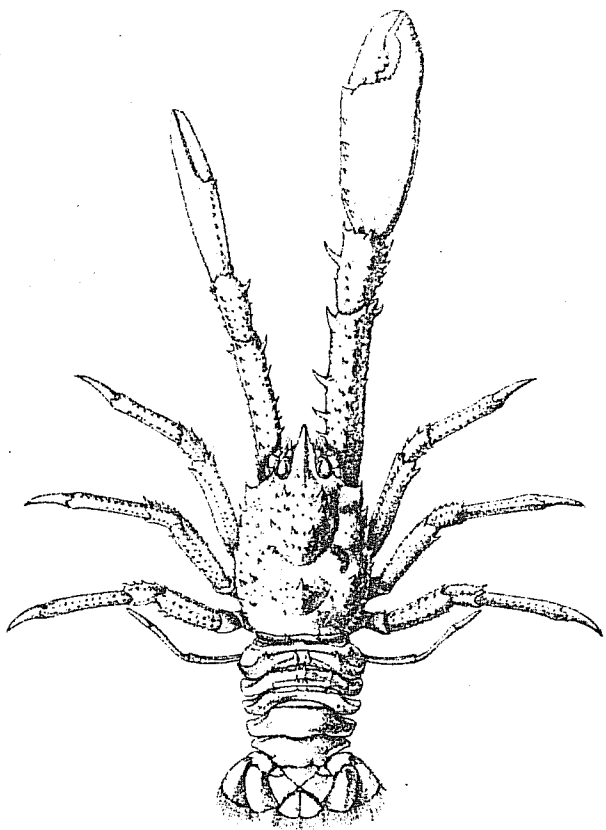
PLATE XLIV.

Figs. 1, 1a, 1b.—*Munidopsis iridis*, Alcock and Anderson,
s and Magazine of Natural History, January 1899, p. 20.

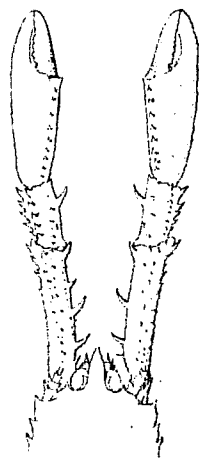
Fig. 2.—*Munidopsis Goodridgii*, Alcock and Anderson, *tom.*
. 21.

Fig. 3.—*Uroptychus cavirostris*, Alcock and Anderson, *tom.*
. 26.

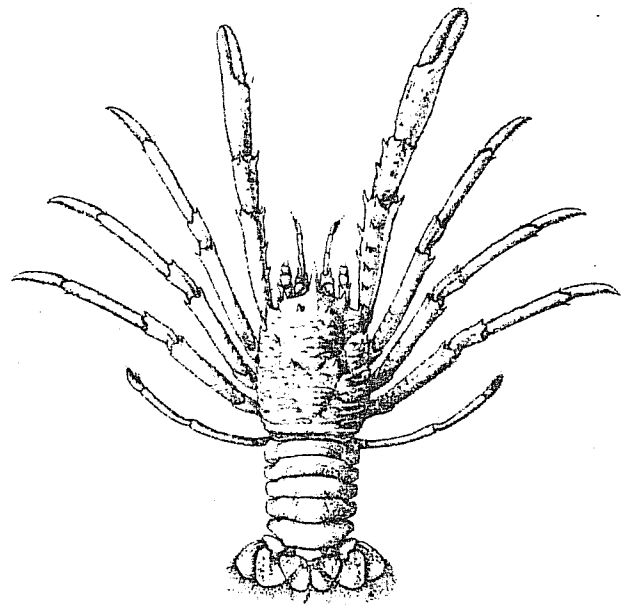
Fig. 4.—*Uroptychus fusimanus*, Alcock and Anderson, *tom.*
. 26.



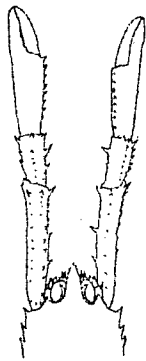
1x2.



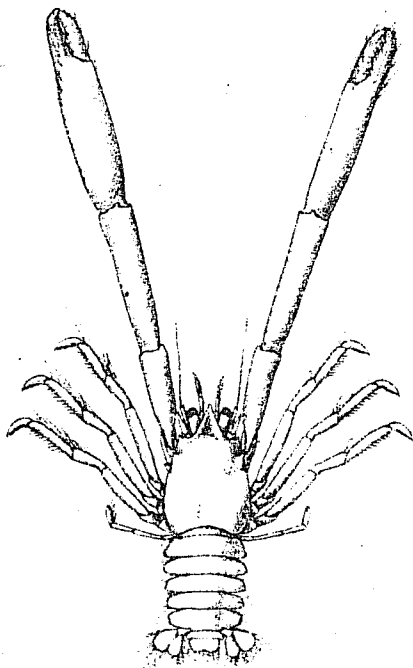
1x2.



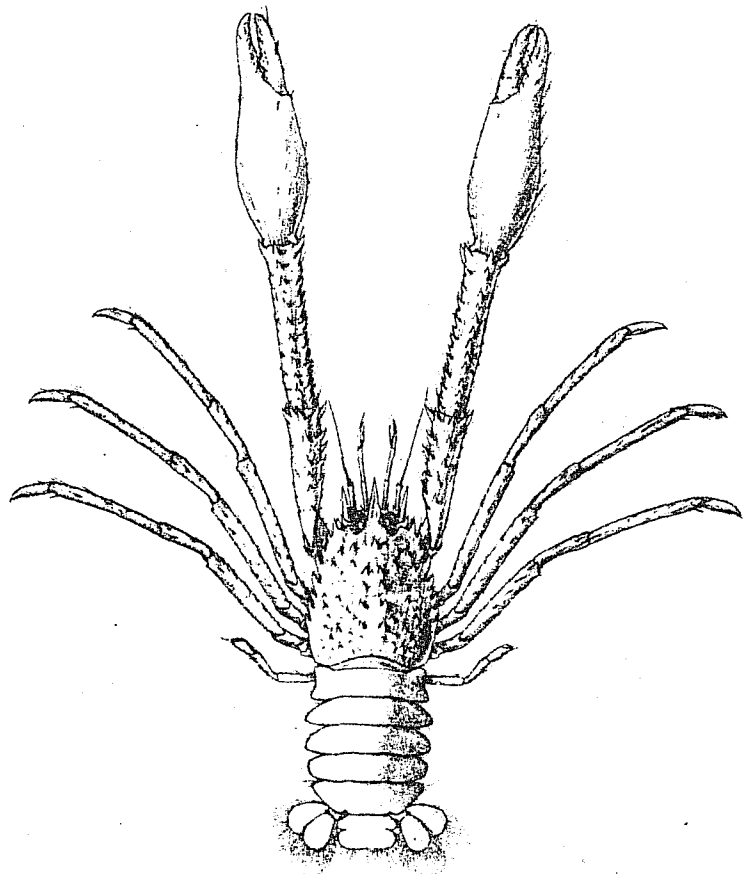
2x2.



1bx2.



3x2.



4x1 1/2.

1. *Munidopsis iridis*. 2. *Munidopsis goodridgii*. 3. *Uroptychus cavirostris*. 4. *Uroptychus fusimanus*.

EXPLANATION OF PLATE.

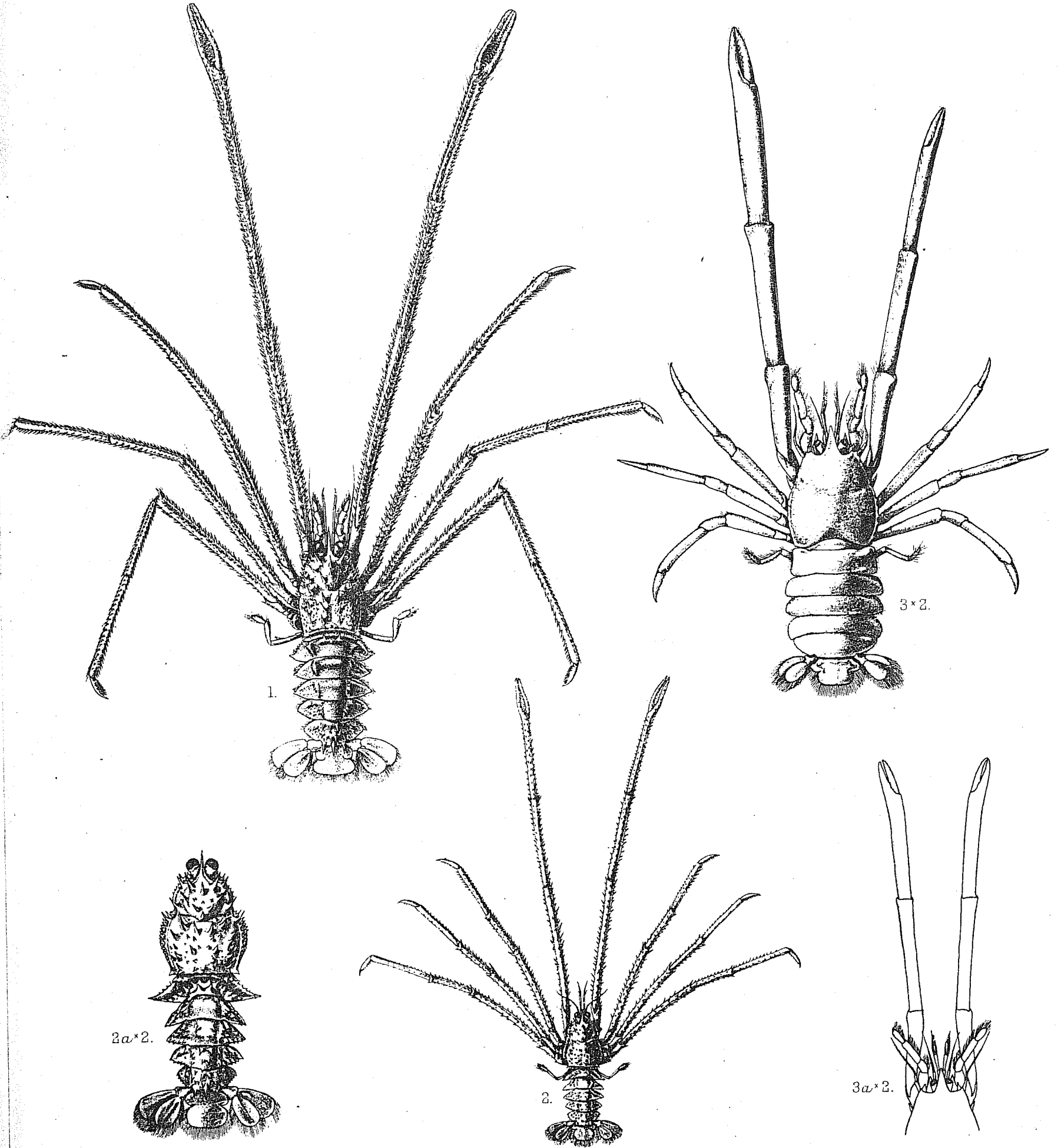
CRUSTACEA.

PLATE XLV.

Ptychogaster investigatoris, Alcock and Anderson,
Magazine of Natural History, January 1899, p. 24.

β.—*Ptychogaster Hendersoni*, Alcock and Anderson,

α.—*Uroptychus bacillimanus*, Alcock and Anderson,



1. *Ptychogaster investigatoris*. 2, 2a. *Ptychogaster hendersoni*. 3, 3a. *Uroptychus bacillimanus*.