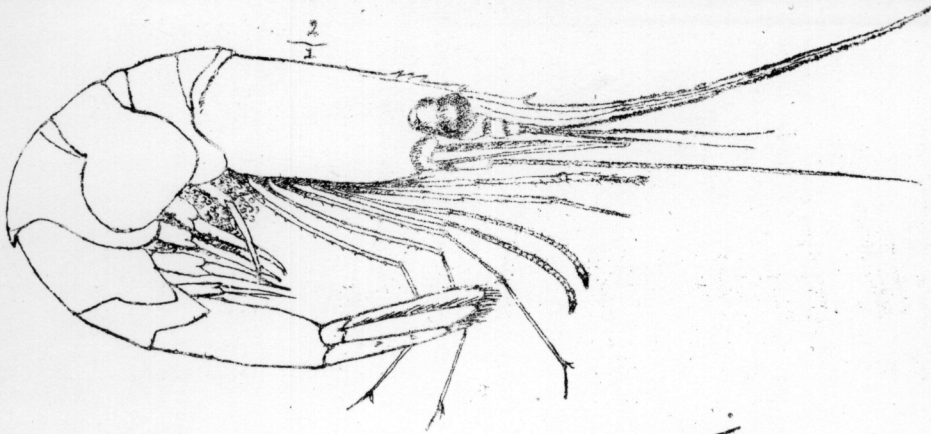


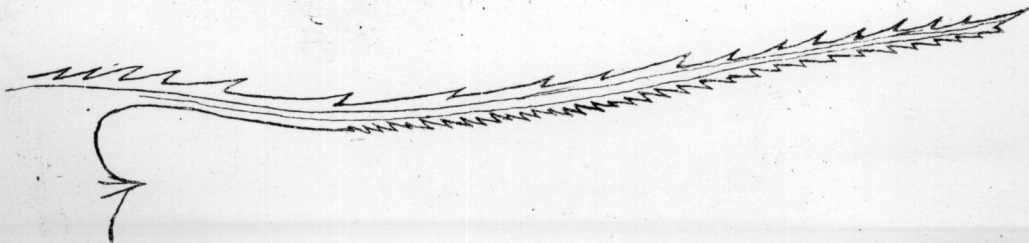
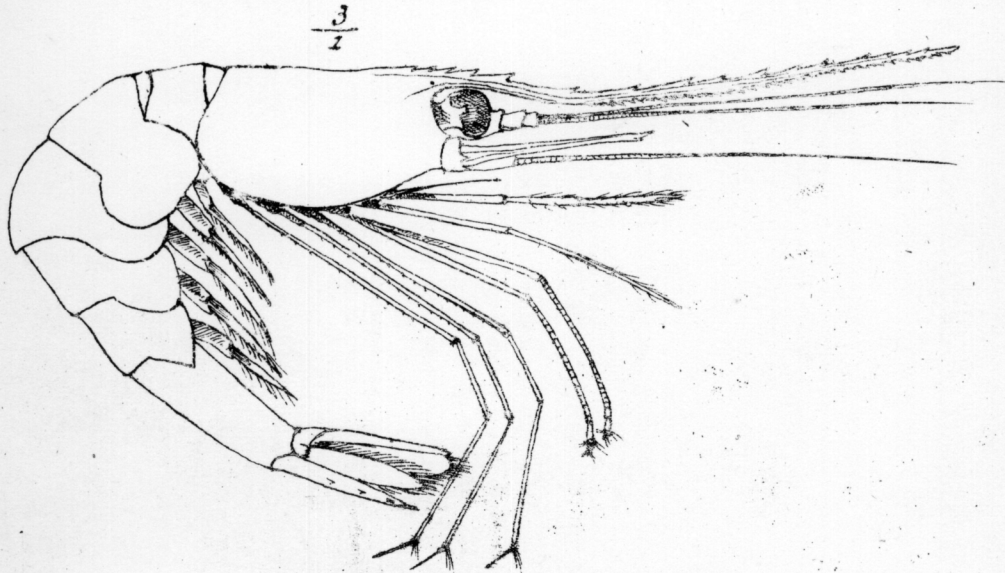
Expédition du Blatte 237 brasses.

*Pandalus ensis* (A.M.E.) = *Acanthephyra ensis*

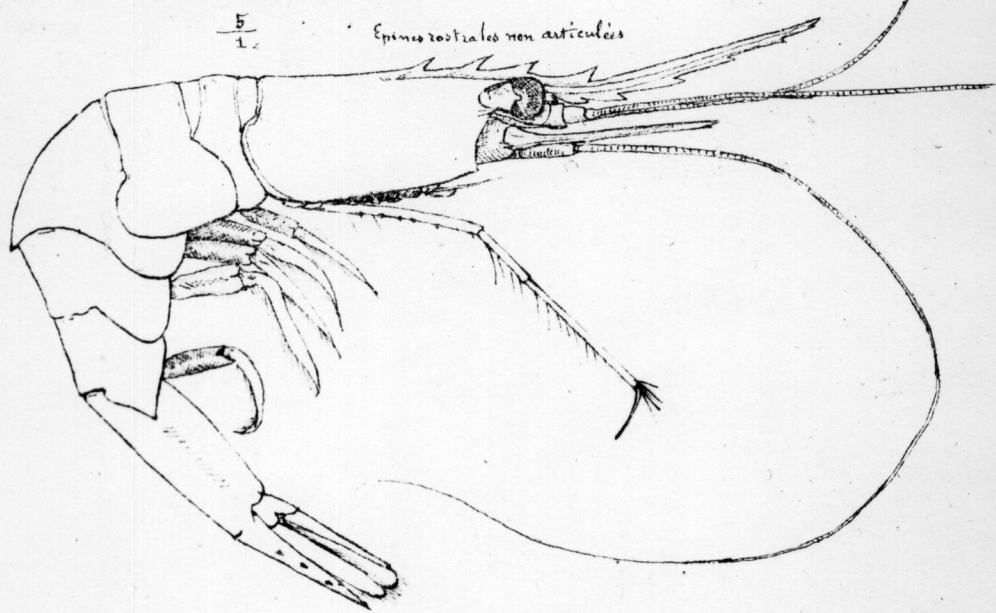


Expédition du Blatte Profondeur 200 brasses.

*Pandalus miles* A.M.E. Martinique.



Exped. du Travailleur.  
 10 Aout. 1882. Dragage 54. Prof. 400 m.  
*Pandalus quadridentatus*. (A.M.E.)



Drag. n° 39.  
 Prof. 530.  
*Pandalus stylopus* (A.M.E.) - Exped. du Travailleur 30 Juillet 1882.

