

Recueil des Planches de l'Expedition du "Travailleur." 1883

Fifty copies of these plates were issued by Prof. A. Milne Edwards in 1883. See extract from Prof. Milne-Edwards' letters in Ann. Mag. VI, 1890, p. 473. Liste des Planches formant cette livraison.

[† in National Museum; * in British Museum of Natural History.]

- | | |
|---------------------------------------|--|
| †1. Ergasticus Clouei (A.M.E.) | Travailleur |
| *1. Heterocrypta Marionis (A.M.E.) | " |
| †2. Scyramathia Carpenteri (Norm.) | " |
| †3. Lispognathus Thomsoni (Norm.) | " |
| †4. Geryon longipes (A.M.E.) | " |
| †5. Ebalia nux (Norm.) | " |
| †6. Homolopsis rostratus (A.M.E.) | Travailleur No. 40. July 31, 1900 mètres |
| *6. Homolodromia paradoxa (A.M.E.) | Blake, 151. 356 br. Nevis |
| *7. Dicranodromia Mahieuxii (A.M.E.) | Travailleur |
| *8. Cymonomus granulatus (A.M.E.) | " |
| *9. Xylopagurus rectus (A.M.E.) | Blake, Dominique. 220 br. |
| *10. Pylocheles agassizii (A.M.E.) | Blake, Barbados. 200 f. |
| *11. Munida tenuimana (Sars) | Travailleur |
| *12. Diptychus vittatus (A.M.E.) | " No. 42, Aug. 16, 900 mètres. |
| *13. Elasmonotus Vaillantii (A.M.E.) | Trav. No. 2, June 14/81. 1068 mètres. |
| *14. Galathodes acutus (A.M.E.) | Travailleur |
| *15. Galathodes rosaceus (A.M.E.) | " No. 42, 899 m. Aug. 16/81. |
| * Galathodes Marionis (A.M.E.) | " Medit. 450 m. |
| *16. Phoberus coecus (A.M.E.) | Blake, Grenada, 416 f. |
| *17. Chlorotocus gracillipes (A.M.E.) | Travailleur No. 28, July 27/81.
332-370 mètres. |
| †18. Pandalus ensis (A.M.E.) | Blake, 237 fm. |
| †18. Pandalus Miles (A.M.E.) | " 200 f. Martinique. |
| *19. Pandalus quadridentatus (A.M.E.) | Trav. No. 56. Aug. 10/82. 400 m. |

- *19. *Pandalus stylopus* (A.M.E.) Trav. No. 39, 530 m. July 30/82.
- †20. *Pandalus longipes* A.M.E. Blake, Barbados, 200 f.
- *21. " *Parfaitii* " Trav. 19, July 19/82. 1350 m.
- *21. " *martius* " " Atlantic O. 400-1200 m.
- †22. " *leptocerus* Smith Newport
- †22. " *propinquus* Sars "
- *23. " *sagittarius* A.M.E. Trav. LIV, Aug. 18/82. 400 m.
- *24. " *serratus* A.M.E. Ile Upolu. Mus Godeffroy.
- †24. " *tenuipes* Smith Newport, 142 b.
- *25. " *longicarpus* A.M.E. Trav. No. 26, 1882. 370 m.
- †25. " *geniculatus* " " " 19 July 19/82. 1350 m.
- †26. *Pentomus parvulus* A.M.E. (*Pantomus*, on Plate) Blake, 36.
28° 13' N. 89° 10' O 34 b.
- †26. *Pandalus brevirostris* A.M.E. Trav. No. 2. June 14/81. 1068 m.
- †27. *Heterocarpus ensifer* " Blake. St. Kitt. 208 b.
- †27. " *oryx* " " 955 b.
- *28. " *laevis* " " Martinique. 169 b.
- †28. " *alexandrii* " " No. 2. Havane 805 b.
- *29. *Tozeuma cornutum* " Barbades 40 f.
- *29. " *serratum* A.M.E. " 50 f.
- †30. *Oplophorus gracilirostris* A.M.E. Blake, St. Kitt. 118 f.
- †30. " *spinicauda* " Trav. July 30/82. No. 38. 636 m.
- *31. *Notostomus elegans* A.M.E. Blake 955 b.
- *32. " *corallinus* A.M.E. Trav. 20. July 19/82. 2080 m.
- †32. " *gibbosus* A.M.E. Blake Grenada 626 b.
- *33. *Acanthephyra armata* A.M.E. Antilles

- †33. *Acanthephyra debilis* A.M.E. (On plate, var. *Europoea* = *Miersia gracilis* Sm.)
- †33. *Acanthephyra purpurea* A.M.E. Atlantic 2000 metres.
- †*34. *Gonatonotus crassus* var. *longirostris* A.M.E. Blake, 29 b. Sand Key.
- †34. " " A.M.E. Blake Grenada 262 b.
- *35. *Stylodactylus rectirostris* A.M.E. Blake Ste Lucie 116 b.
- †35a. " *serratus* A.M.E. " Dominique 500
- †36. *Nematocarcinus cursor* A.M.E. Antilles 500
- †37. *Pontophilus Jacquetii* A.M.E. Travailleur.
- †38. *Glyphocrangon aculeatum* A.M.E. Blake Martinique 472 b.
- †39. " *spinicauda* A.M.E. St. Kitts. 250
- †39. " *nobile* A.M.E. Dominique 1131.
- *40. *Richardina spinicincta* A.M.E. Travailleur
- †41. *Benthesicymus Bartleti* Smith? " No. 40 July 31/82. 1900 m.
- †42. *Gnathophausia Zoea* W. S. Travailleur
43. " " " " "

Recueil de Figures
de
Crustacés

nouveaux ou peu connus

par

M. A. Milne-Edwards

1^{re} Livraison
(Comprenant 44 planches.)

Avril 1883.

+

Liste des Planches formant cette livraison

- | | | |
|---|-----------------|---|
| X | Pl. <u>1</u> | <i>Ergasticus Clouii</i> (a. N. E.) |
| | | <i>Heterocrypta Marionis</i> (a. N. E.) |
| X | ✓ Pl. <u>2</u> | <i>Seyramathia Carpenteri</i> (Norm.) |
| X | ✓ Pl. <u>3</u> | <i>Sispognathus Thomsoni</i> (Norm.) |
| X | ✓ Pl. <u>4</u> | <i>Geryon longipes</i> (a. N. E.) |
| X | ✓ Pl. <u>5</u> | <i>Ebalia nux</i> (Norm.) |
| | ✓ Pl. <u>6</u> | <i>Homolopsis rostratus</i> (a. N. E.) |
| | ✓ | <i>Homolodromia paradoxa</i> (a. N. E.) |
| X | ✓ Pl. <u>7</u> | <i>Dicranodromia Mabieuxii</i> (a. N. E.) |
| X | ✓ Pl. <u>8</u> | <i>Cymonemus granulatus</i> (a. N. E.) |
| X | ✓ Pl. <u>9</u> | <i>Xylopagurus rectus</i> (a. N. E.) |
| X | ✓ Pl. <u>10</u> | <i>Ptylocheilus Agassizii</i> (a. N. E.) |
| X | ✓ Pl. <u>11</u> | <i>Munida tenuimana</i> (Sard.) |
| X | ✓ Pl. <u>12</u> | <i>Diptychus vittatus</i> (a. N. E.) |
| X | ✓ Pl. <u>13</u> | <i>Elasmonotus Vaillantii</i> (a. N. E.) |
| X | ✓ Pl. <u>14</u> | <i>Galatbodes acutus</i> (a. N. E.) |
| | ✓ Pl. <u>15</u> | <i>Galatbodes rosaceus</i> (a. N. E.) |
| X | ✓ | <i>Galatbodes Marionis</i> (a. N. E.) |
| X | ✓ Pl. <u>16</u> | <i>Phoberus caecus</i> (a. N. E.) |
| X | ✓ Pl. <u>17</u> | <i>Chlorotocus gracilipes</i> (a. N. E.) |
| X | ✓ Pl. <u>18</u> | <i>Pandalus ensis</i> (a. N. E.) |
| X | ✓ | <i>Pandalus Miles</i> (a. N. E.) |
| X | ✓ Pl. <u>19</u> | <i>Pandalus quadridentatus</i> (a. N. E.) |
| X | ✓ | <i>Pandalus stylopus</i> (a. N. E.) |
| X | ✓ Pl. <u>20</u> | <i>Pandalus longipes</i> (a. N. E.) |
| X | ✓ Pl. <u>21</u> | <i>Pandalus Parfaitii</i> (a. N. E.) |
| X | ✓ | <i>Pandalus martini</i> (a. N. E.) |
| X | ✓ Pl. <u>22</u> | <i>Pandalus leptocerus</i> (Smith.) |
| X | ✓ | <i>Pandalus propinquus</i> (Sard.) |
| X | ✓ Pl. <u>23</u> | <i>Pandalus sagittarius</i> (a. N. E.) |

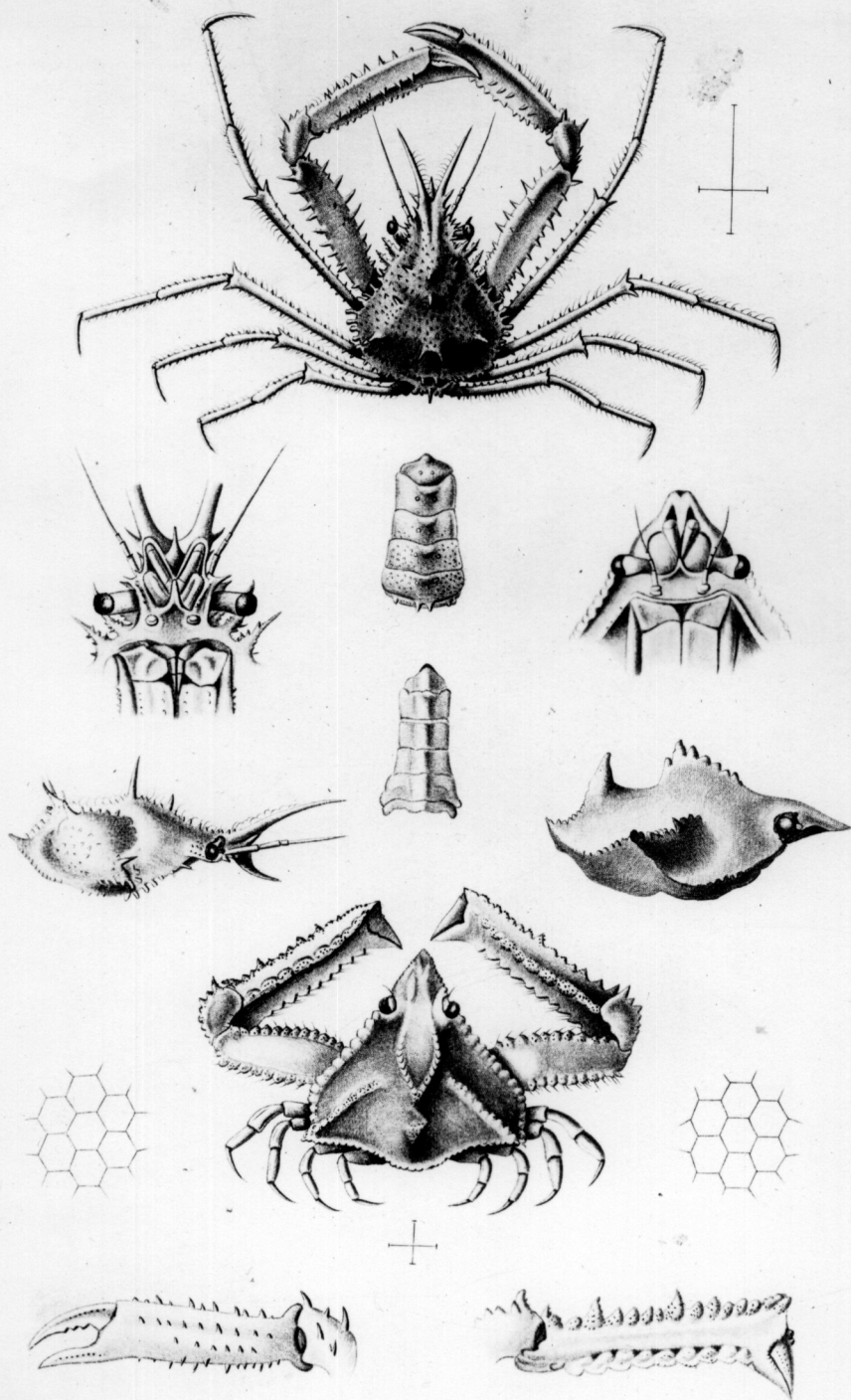
- Sp. 24 *Pandalus serratus* (a. N.E.) ✓ X
- Pandalus tenuipes* (Smith.) ✓ X
- Sp. 25 *Pandalus longicarpus* (a. N.E. Em.) ✓ — °
- Pandalus geniculatus* (a. N.E.) ✓ X
- Sp. 26 *Pentopus parvulus* (a. N.E.) ✓ X
- Pandalus brevirostis* (a. N.E.) ✓ X
- Sp. 27 *Heterocarpus ensifer* (a. N.E.) ✓ X
- Heterocarpus cryx* (a. N.E.) ✓ X
- Sp. 28 *Heterocarpus laevis* (a. N.E.) ✓ X
- Heterocarpus alexandri* (a. N.E.) ✓ X
- Sp. 29 *Cozuma cornutum* (a. N.E.) ✓ X
- Cozuma serratum* (a. N.E.) ✓ X
- Sp. 30 *Ophioborus gracilirostris* (a. N.E.) ✓ X
- Ophioborus spinicanda* (a. N.E.) ✓ X
- Sp. 31 *Kotostomus elegans* (a. N.E.) — ✓
- Sp. 32 *Kotostomus corallinus* (a. N.E.) ✓ X
- Kotostomus gibbosus* (a. N.E.) ✓ X
- Sp. 33 *Acanthostyria armata* (a. N.E.) & *A. purpurea* (a. N.E.) ✓ X
- Acanthostyria debilis* (a. N.E.) ✓ X
- Sp. 34 *Gonatonotus crassus* var. *longirostris* (a. N.E.) ✓ X
- Gonatonotus crassus* (a. N.E.) ✓ X
- 2 — Sp. 35 *Stylodactylus rectirostris* (a. N.E.) — Sp. ~~X~~ *Stylodactylus serratus* (a. N.E.) ✓ X
- Sp. 36 *Hemateocarcinus cursor* (a. N.E.) ✓ X
- 1 — Sp. 37 *Pontophilus Jacquetii* (a. N.E.) ✓ X
- Sp. 38 *Glyphocrangon aculeatum* (a. N.E.) ✓ X
- Sp. 39 *Glyphocrangon spinicanda* (a. N.E.) ✓ X
- Glyphocrangon nobile* (a. N.E.) — —
- Sp. 40 *Richardina spinicincta* (a. N.E.) ✓ X
- Sp. 41 *Benthesicymmus Burtleti* (Smith.) ✓ X
- Sp. 42 *Gnathophausia Zoa* (N.E.) ✓ X
- Sp. 43 *Gnathophausia Zoa* (N.E.) ✓ X

3

2

Sp

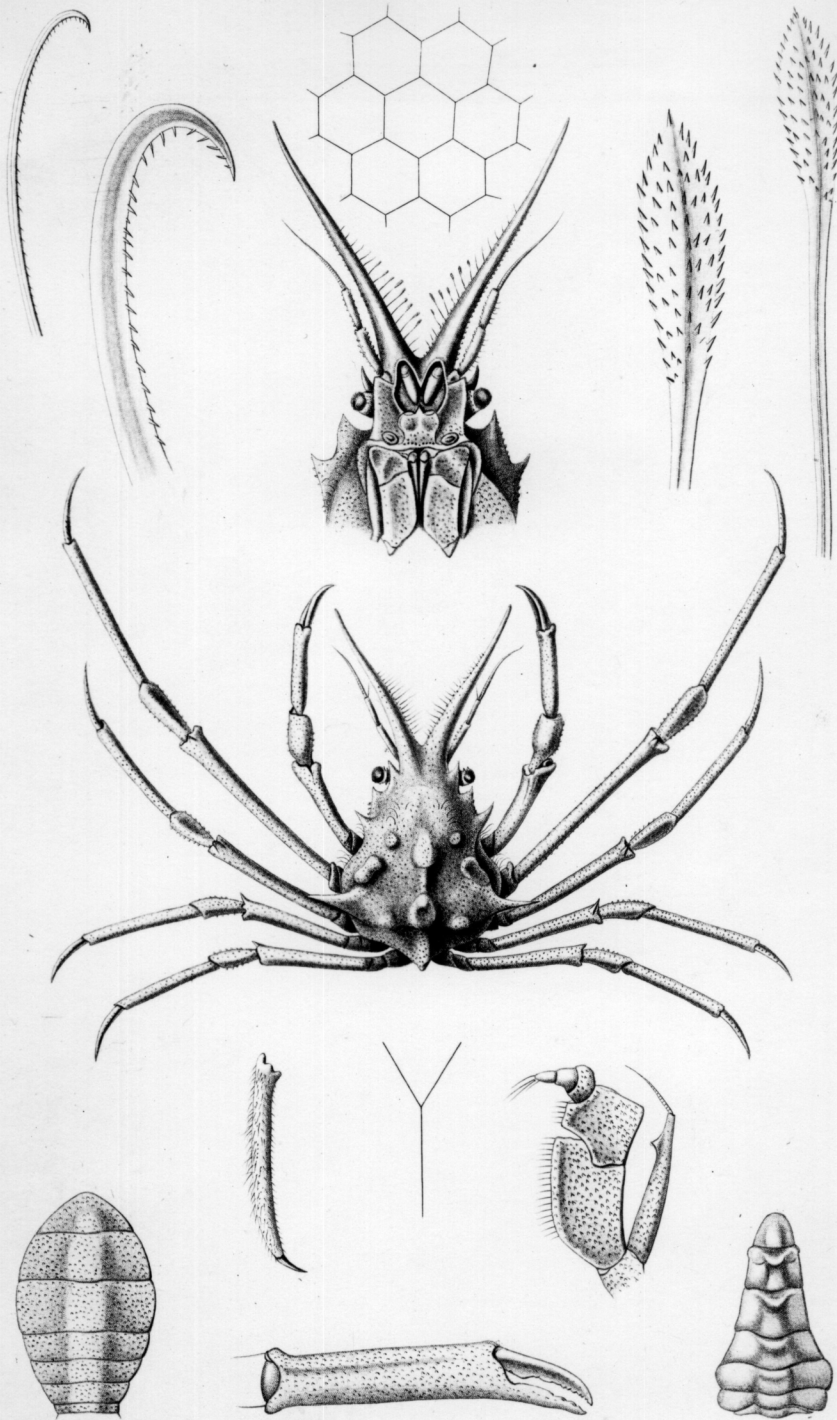
1



Ergasticus Clouei (A.M.E.)

Heterocrypta Marionis (A.M.E.)

EXPÉDITION DU TRAVAILLEUR



Scyramathia Carpenteri (Norm.)

EXPÉDITION DU TRAVAILLEUR