

FIGURE 11.—*Callinectes toxotes* Ordway: a, chelae in frontal view; b, carapace; c, abdomen and sternal area, male; d, abdomen and sternal area, female, USNM 18507, Acapulco, Guerrero, Mexico; a \times 1.1; b \times 0.8; c, d \times 1.

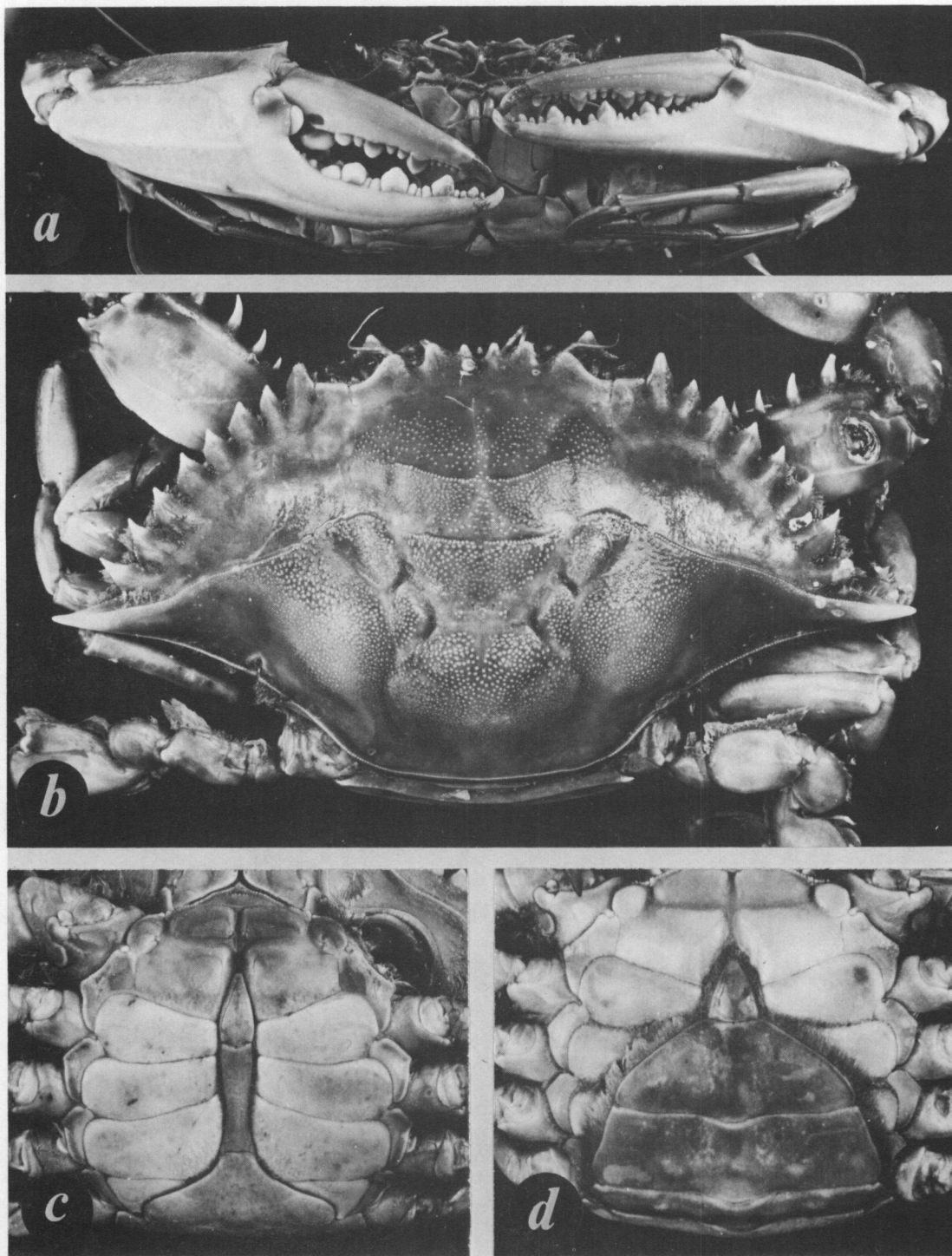


FIGURE 12.—*Callinectes bocourti* A. Milne Edwards: a, chelae in frontal view, male, USNM 72354, Fairplain stream above bridge, St. Croix, V.I.; b, carapace; d, abdomen and sternal area, female, USNM 18235, Sabanilla, Colombia; c, abdomen and sternal area, male, USNM 18233, São Luis, Estado Maranhão, Brazil; a, c $\times 1$; b $\times 1.2$; d $\times 1.4$.