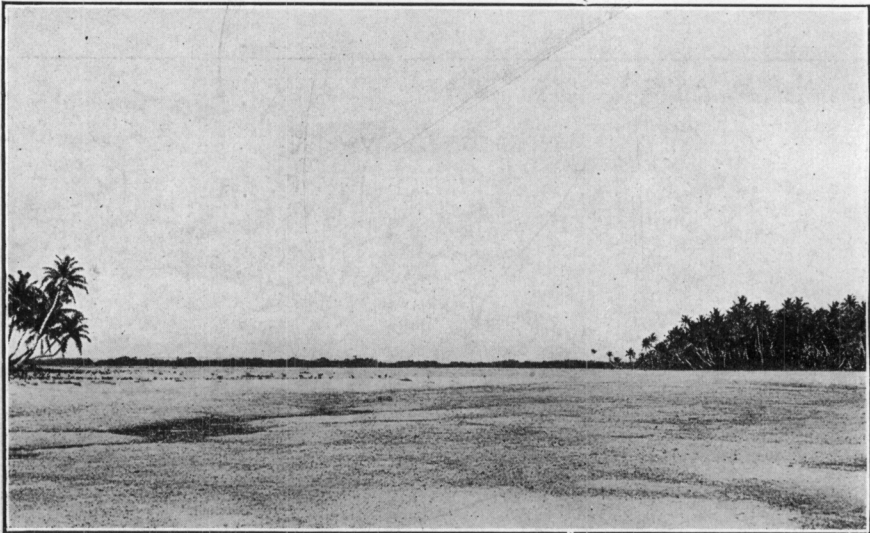
*A**B*

SHORE LINES, FANNING ISLAND.

View *A* is typical of the outer shore line on the southwest side of the island. Shingle-like stones, once living coral heads, are piled high on the beach and offer concealment for numerous forms of marine invertebrates. The line of breakers in the background indicates the outer rim of the rocky shelf which surrounds this part of the island. (Photograph by Charles H. Edmondson.) In view *B* the camera is directed toward the ocean near the south end of the island, across one of the numerous sandy tide flats, on which the burrowing "fiddler crab," *Uca annulipes*, is abundant. (Photograph by Clarence A. Brown).