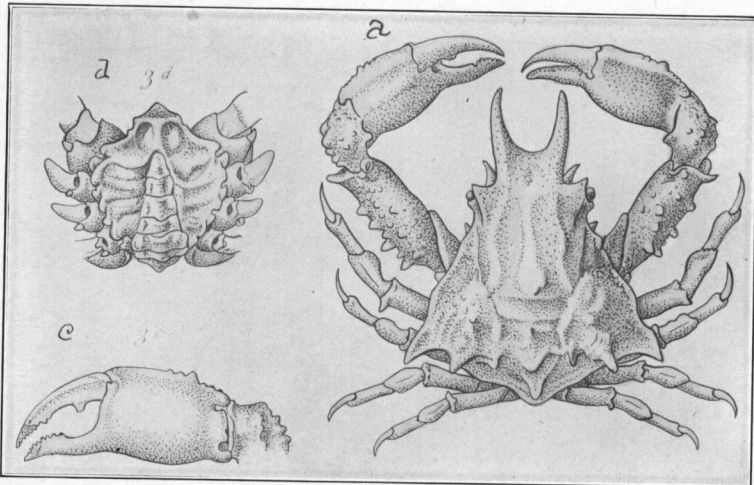
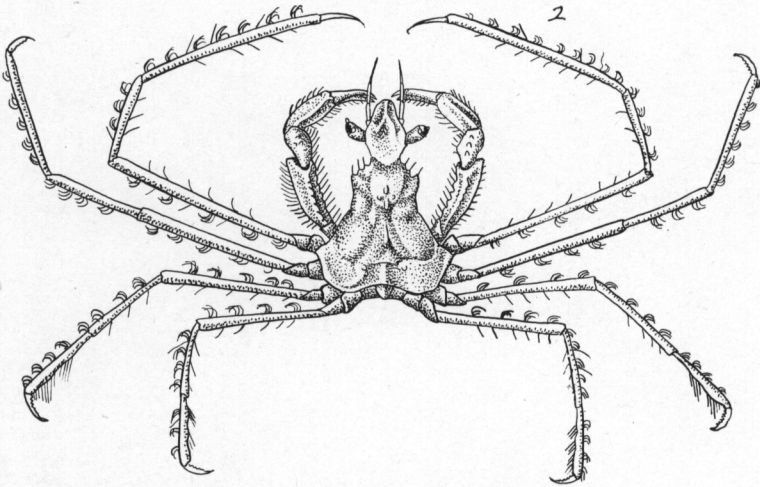
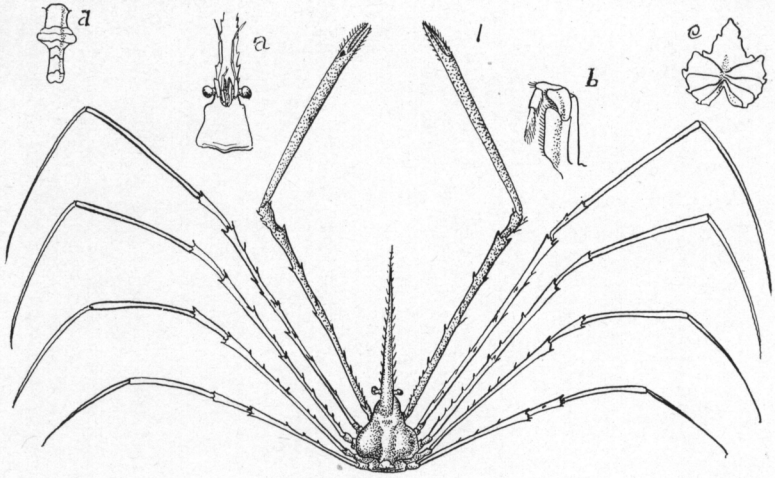
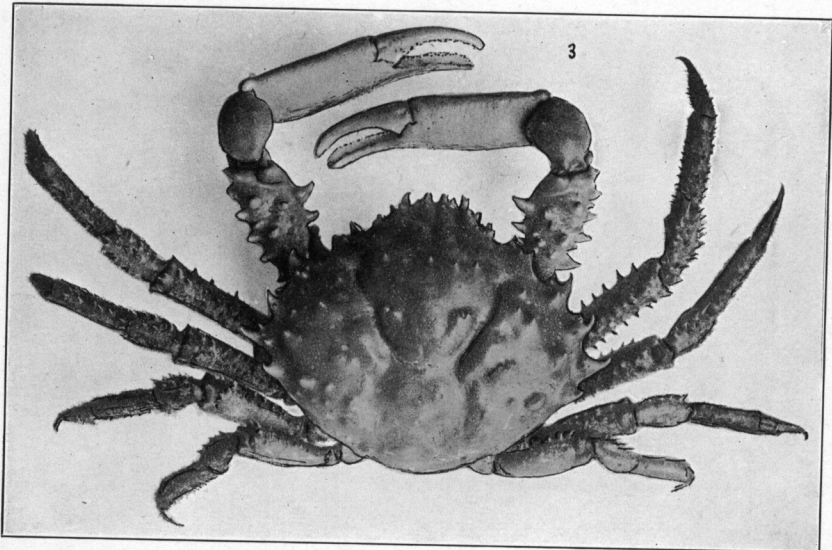
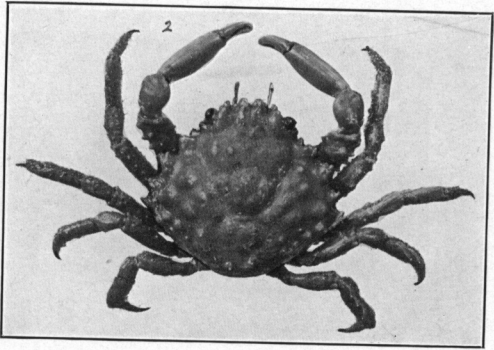
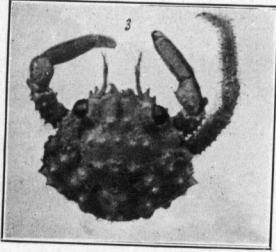


1. Gulf-weed Crab, *Portunus Sayi*; 2. *Achelous Smithii* ♀;
3. *Callinectes marginatus, larvatus*.



1. *Stenorhynchus sagittarius*; 2. *Podochela Riisei*; 3. *Macrocoeloma subparallelum*. After A. M.-Edw.

1



1. *Mithrax depressus*? ; 2. *M. depressus*? ; 3. *M. hispidus* ♀ ; 4. *M. hispidus* ♀ .